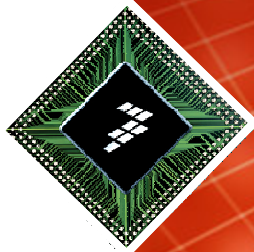




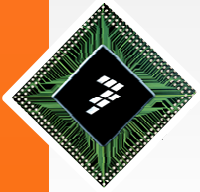
To Import The Software And Build All

TWR-56F8400
CodeWarrior 10 Projects

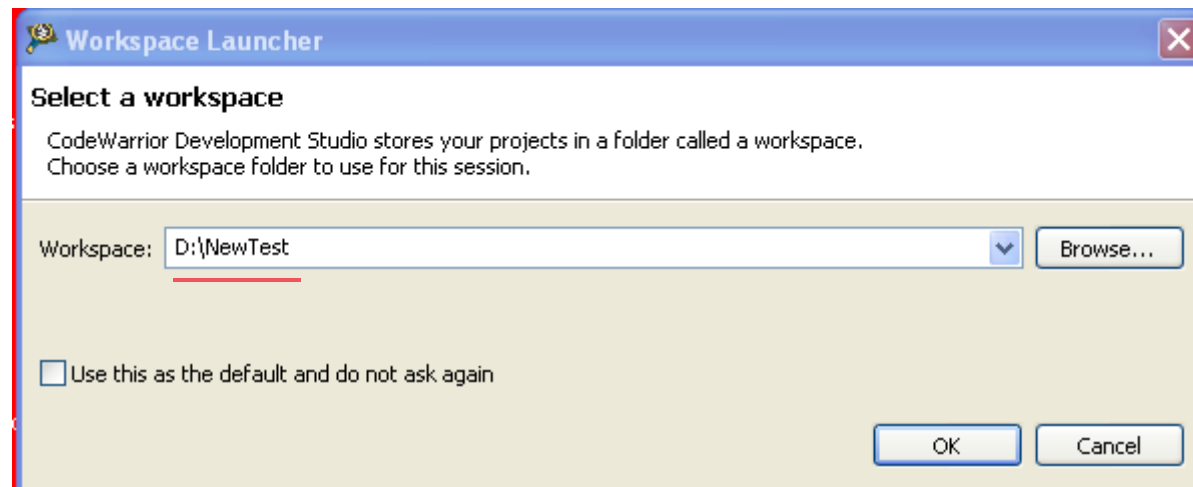


Freescale, the Freescale logo, Altivec, C-5, CodeTEST, CodeWarrior, ColdFire, ColdFire+, C-Ware, the Energy Efficient Solutions logo, Kinetis, mobileGT, PowerQUICC, Processor Expert, QorIQ, Qorivva, StarCore, Symphony and VortiQa are trademarks of Freescale Semiconductor, Inc., Reg. U.S. Pat. & Tm. Off. Airfast, BeeKit, BeeStack, CoreNet, Flexis, MagniV, MXC, Platform in a Package, QorIQ Qonverge, QUICC Engine, Ready Play, SafeAssure, the SafeAssure logo, SMARTMOS, TurboLink, Vybrid and Xtrinsic are trademarks of Freescale Semiconductor, Inc. All other product or service names are the property of their respective owners. © 2012 Freescale Semiconductor, Inc.

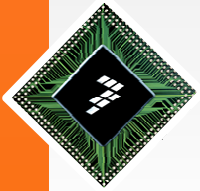




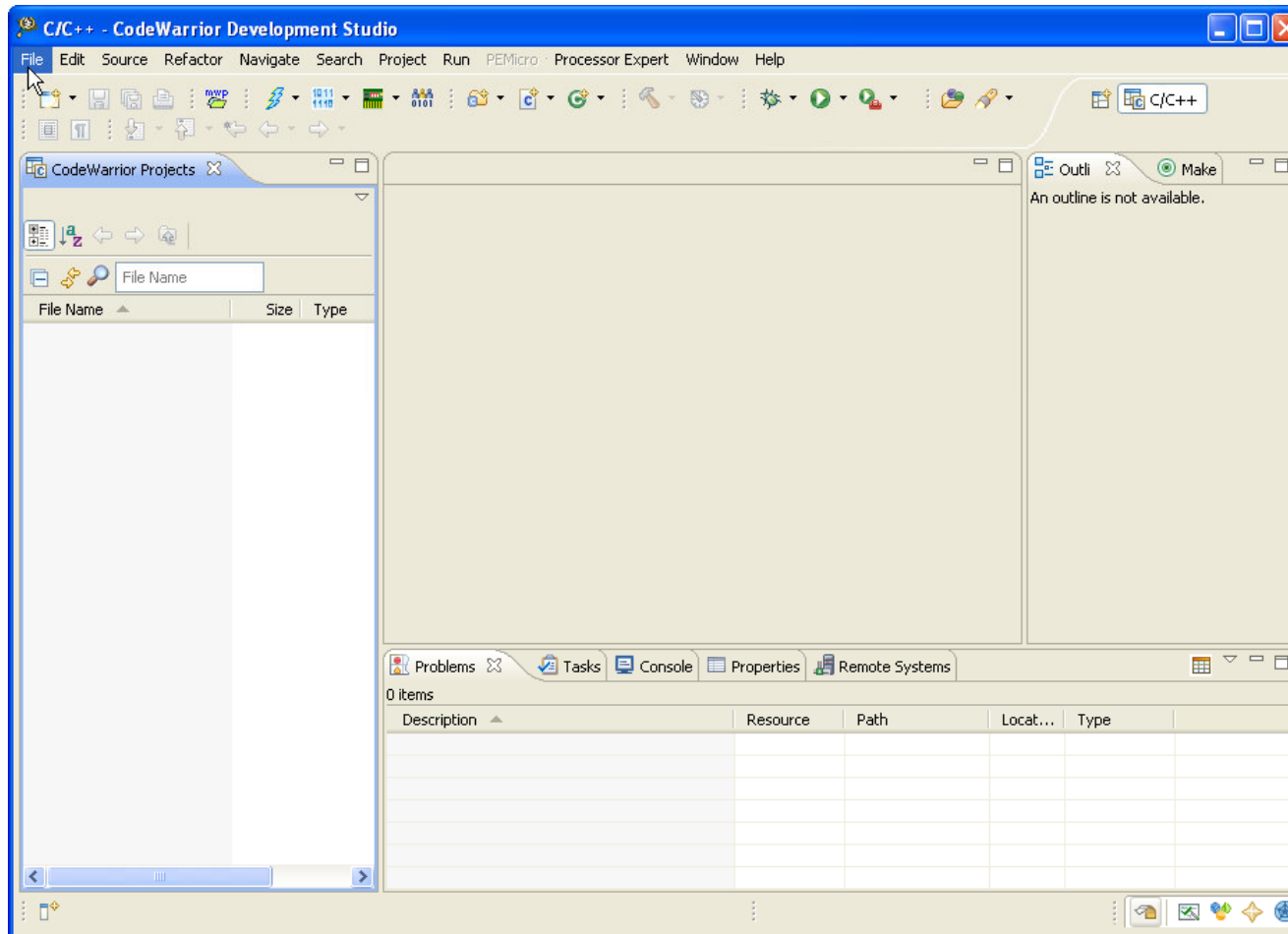
Launch CW

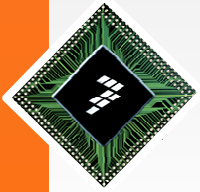


Create a new workarea
called **NewTest**
(or other short name)

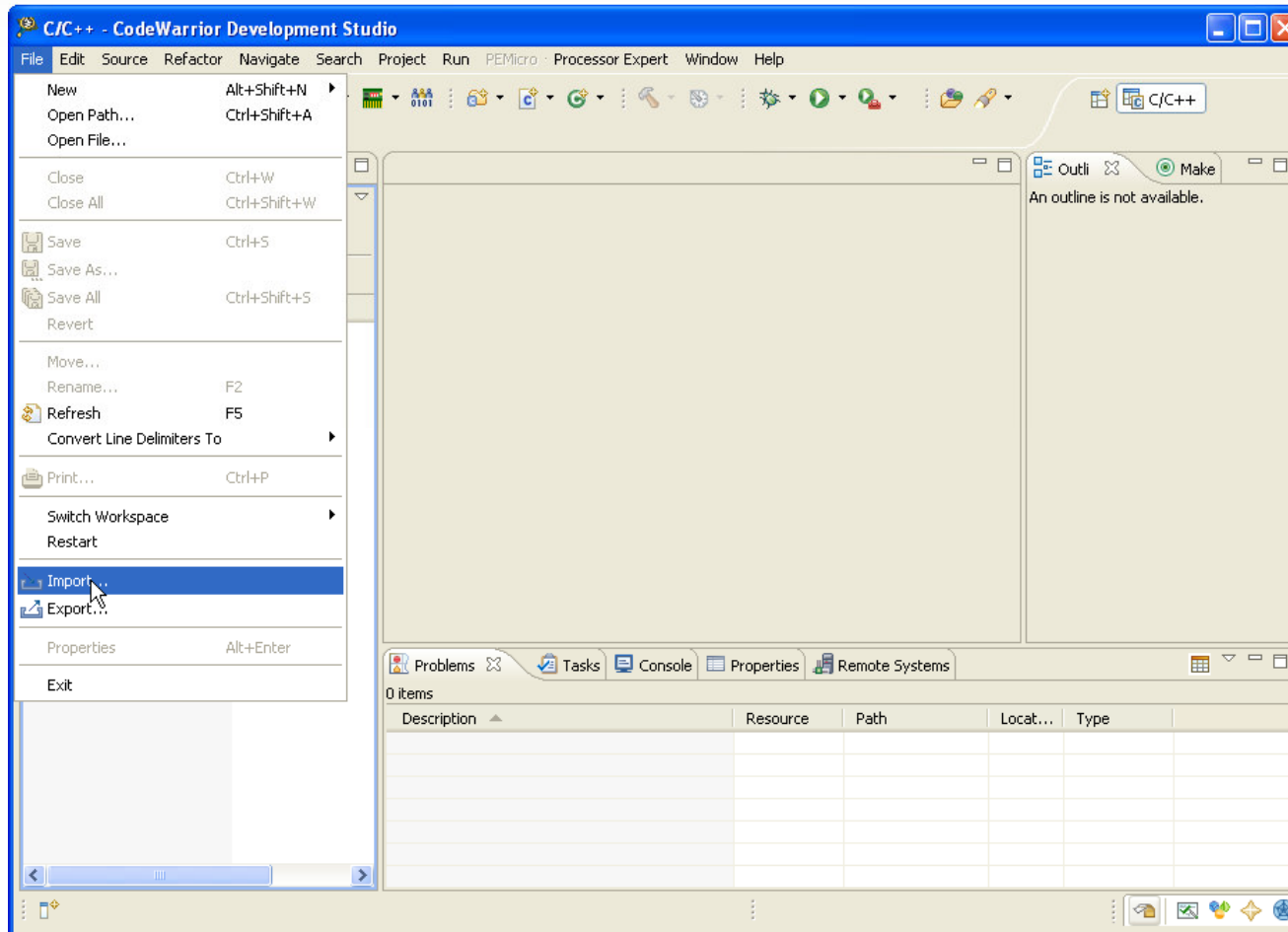


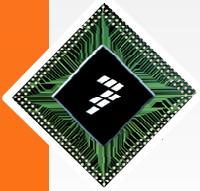
In the “File” menu..



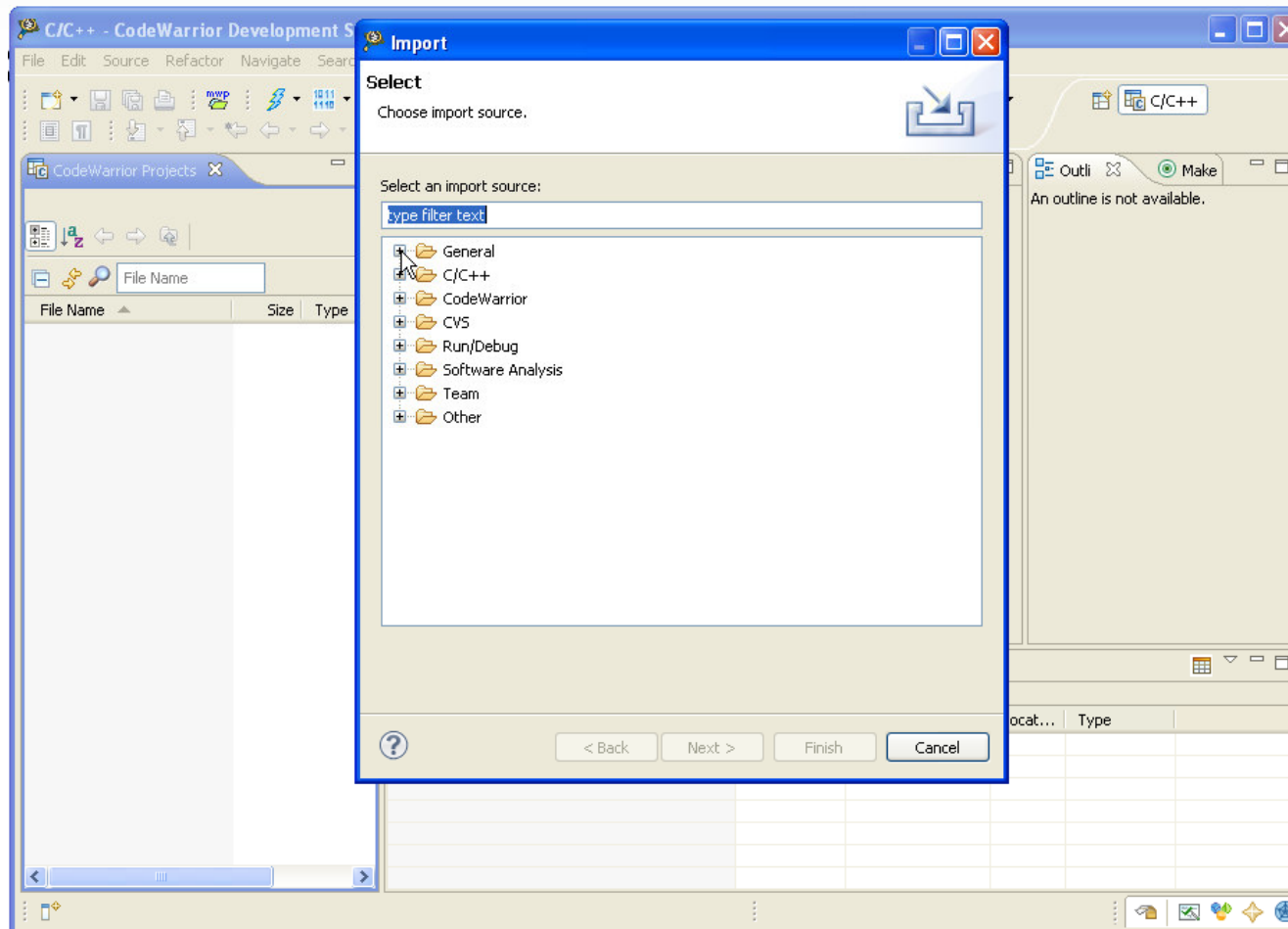


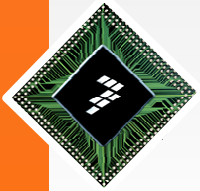
Import



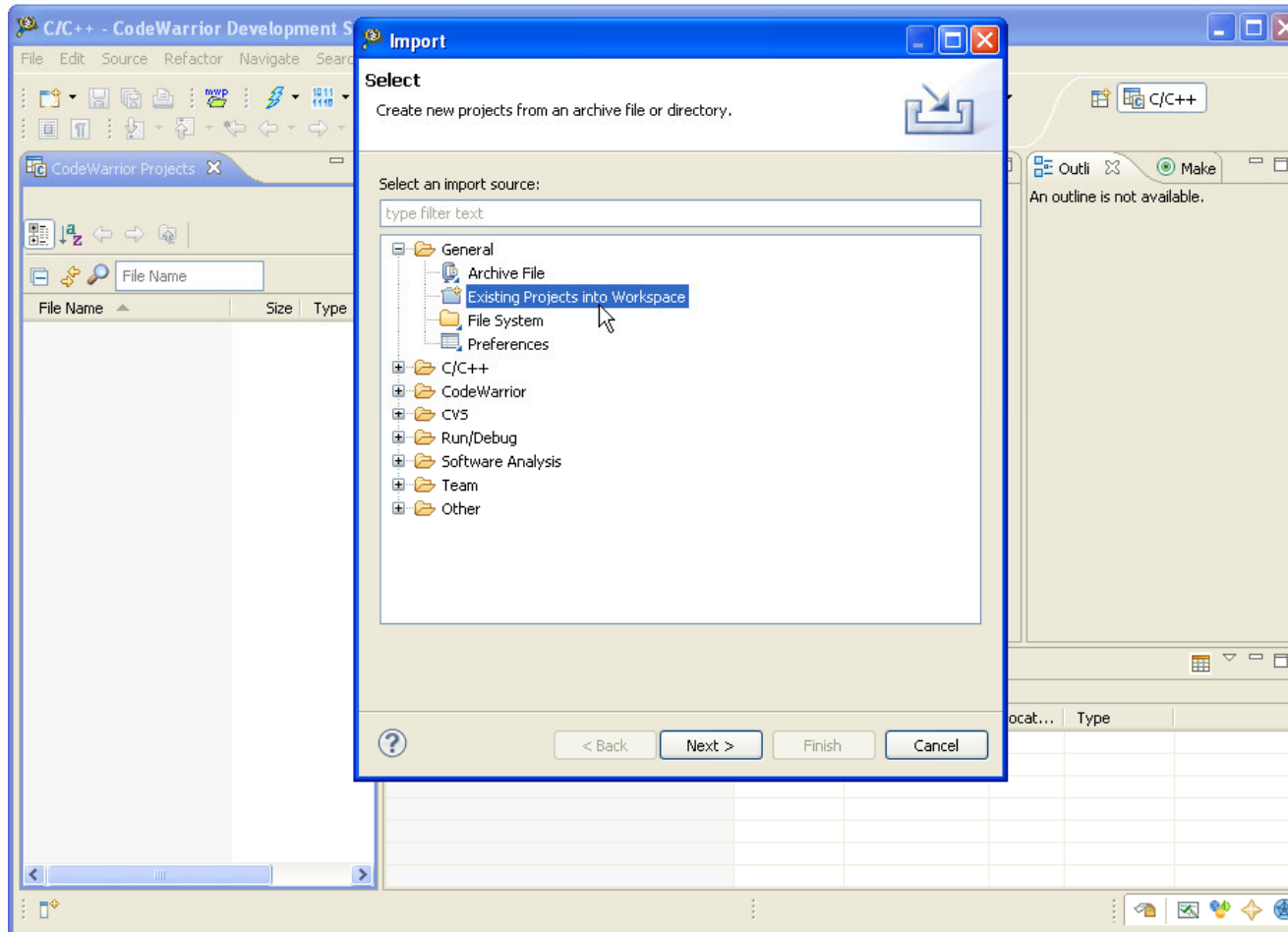


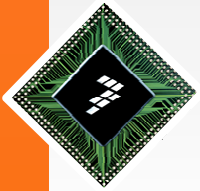
Expand “General”



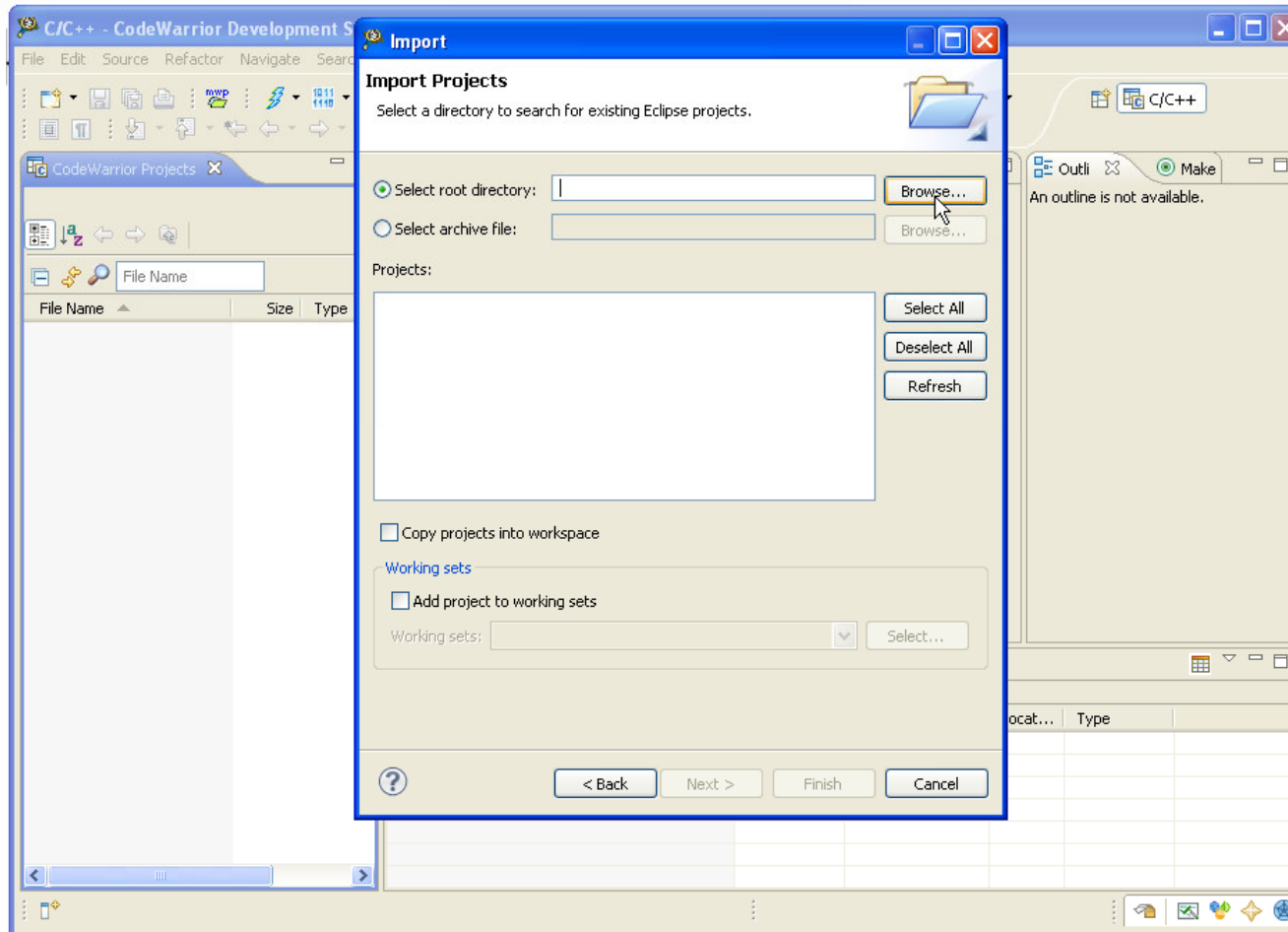


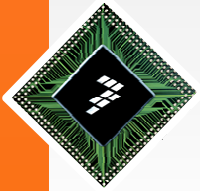
“Existing Projects into Workspace”



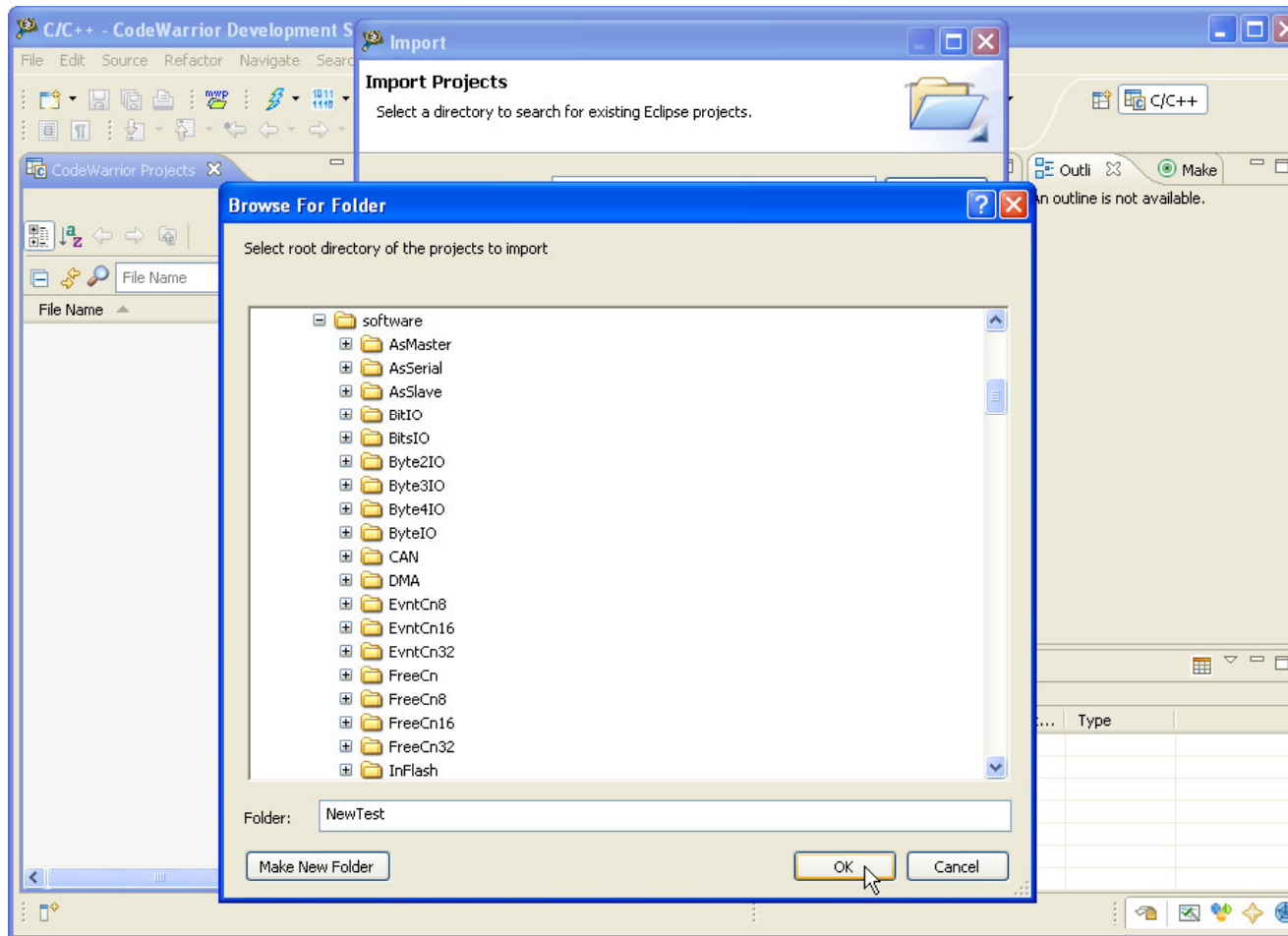


“Browse...” to “Select root directory:”



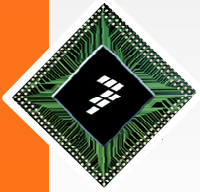


Expand the “software” directory

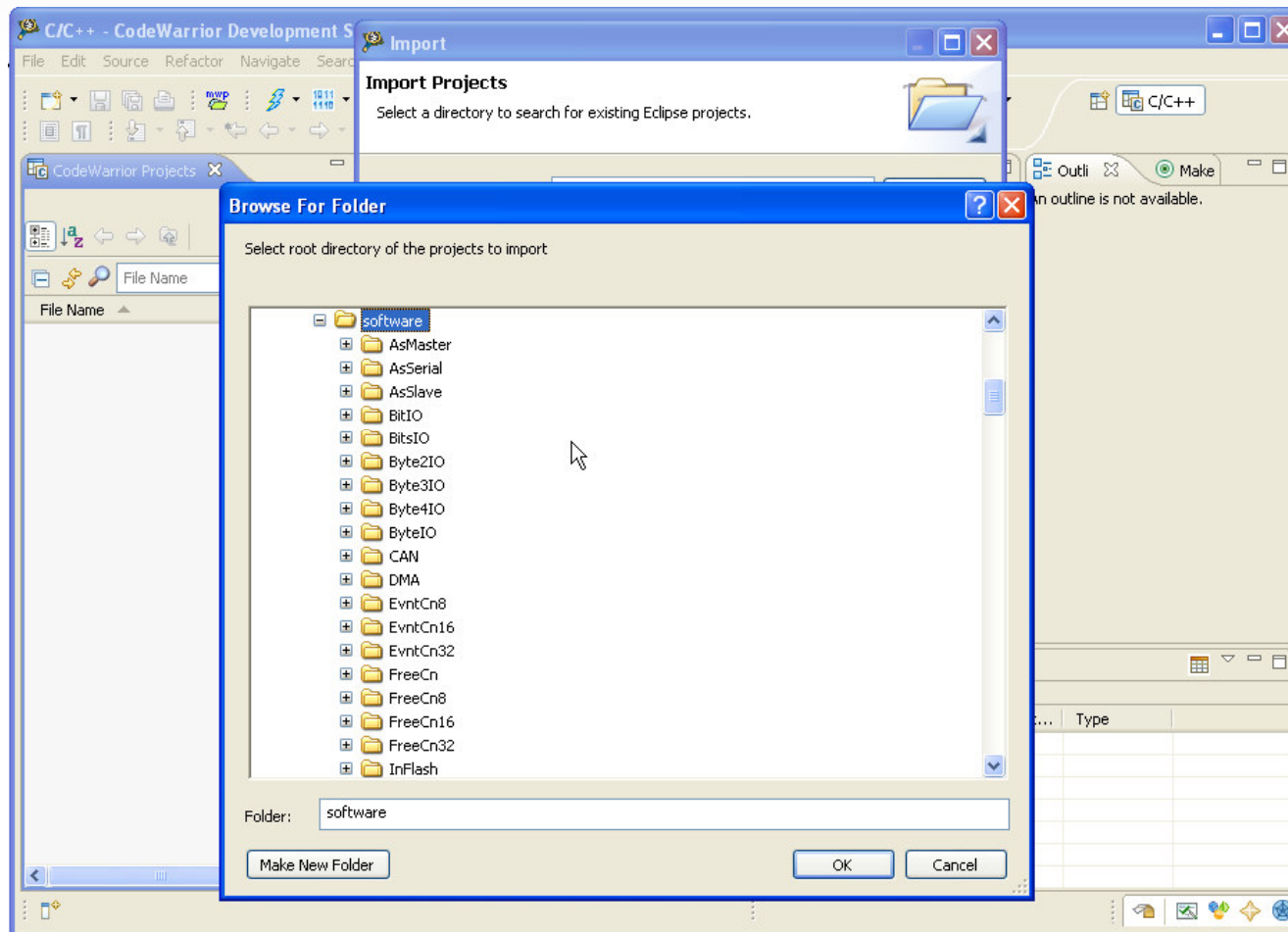


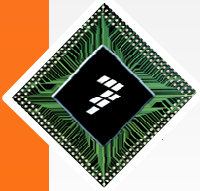
Full path is D:\software\

Freescale, the Freescale logo, AlliVec, C-5, CodeTEST, CodeWarrior, ColdFire, ColdFire+, C-Ware, the Energy Efficient Solutions logo, Kinetis, mobileGT, PowerQUICC, Processor Expert, QorIQ, Qorivva, StarCore, Symphony and VortiQa are trademarks of Freescale Semiconductor, Inc., Reg. U.S. Pat. & Tm. Off. Airfast, BeeKit, BeeStack, CoreNet, Flexis, MagniV, MXC, Platform in a Package, QorIQ Converge, QUICC Engine, SafeAssure, the SafeAssure logo, SMARTMOS, TurboLink, Vybrid and Xttrinsic are trademarks of Freescale Semiconductor, Inc. All other product or service names are the property of their respective owners. © 2012 Freescale Semiconductor, Inc.

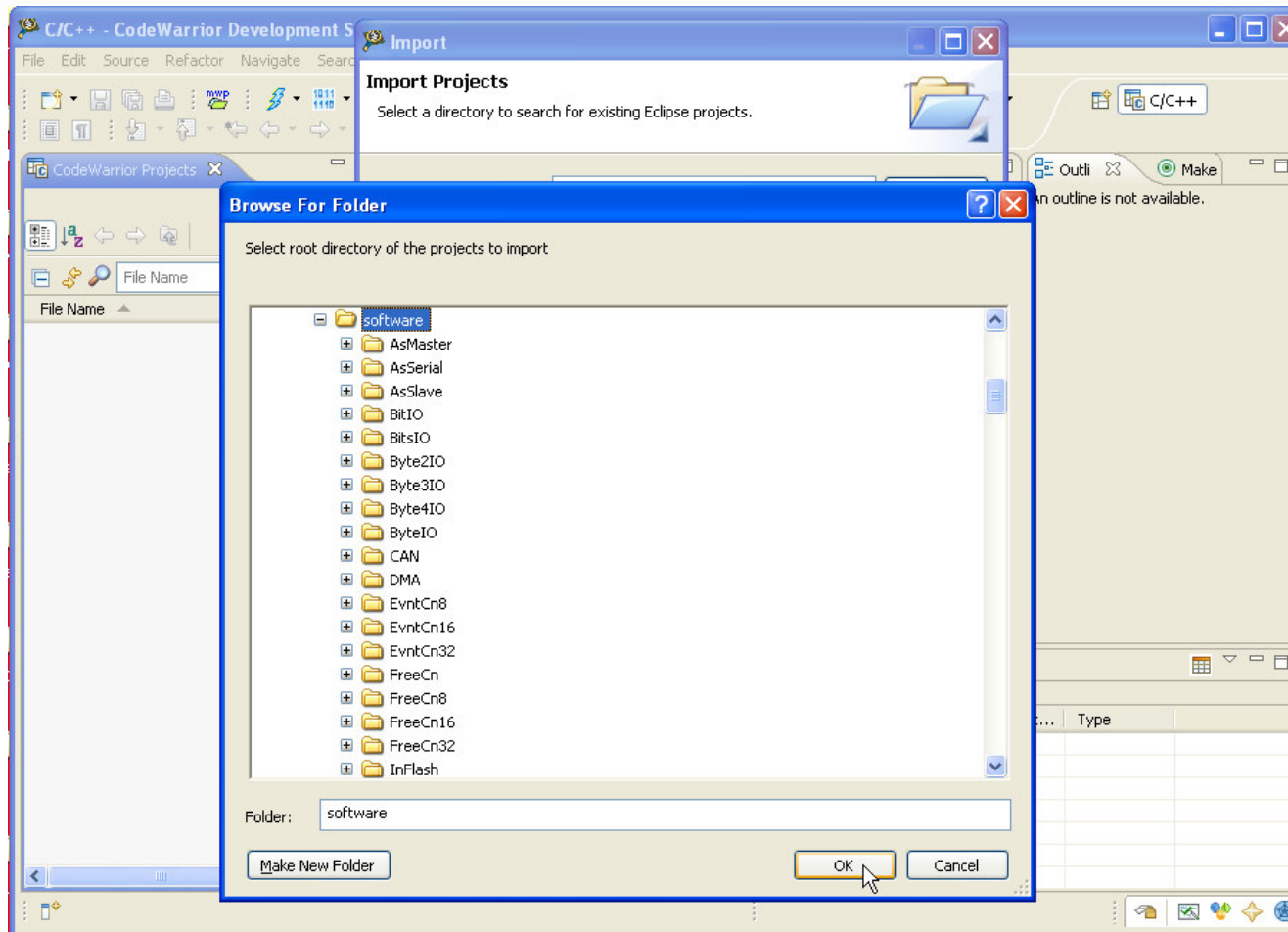


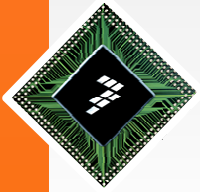
Make sure “software” is highlighted



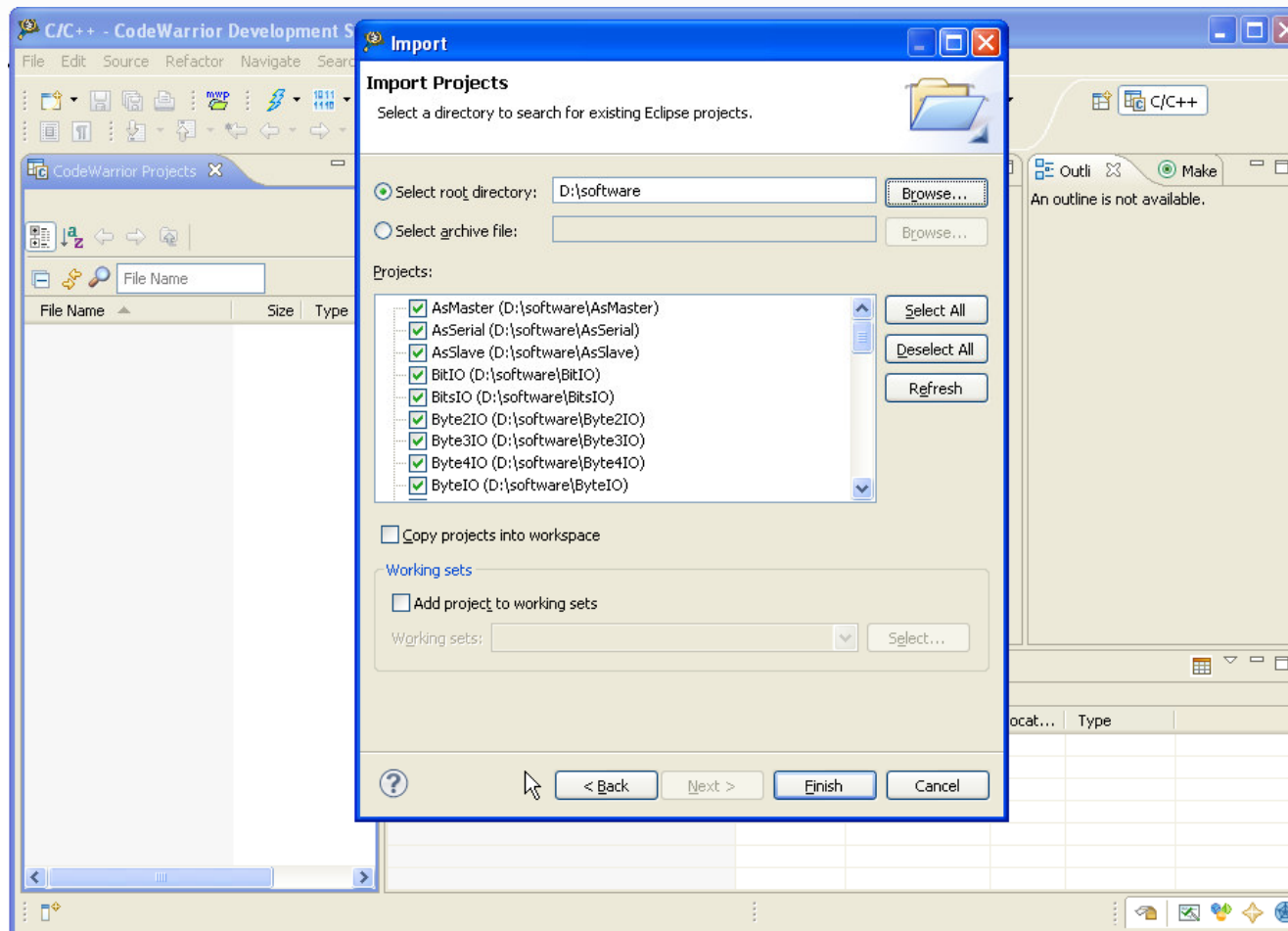


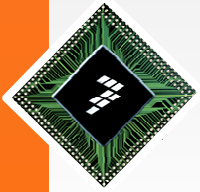
Click “OK” with software highlighted



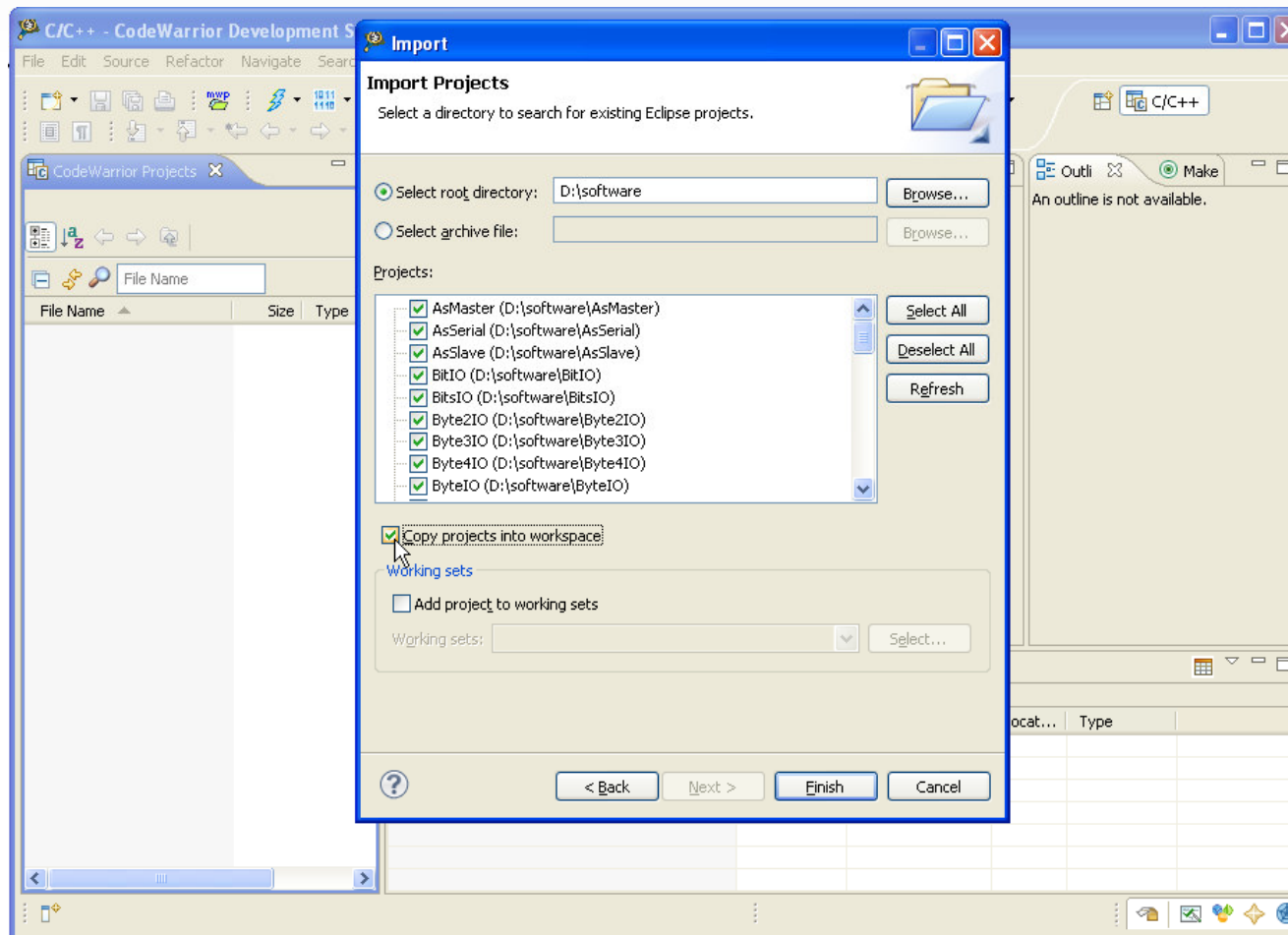


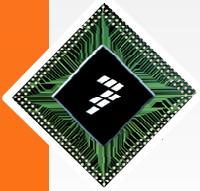
You will see the projects checked



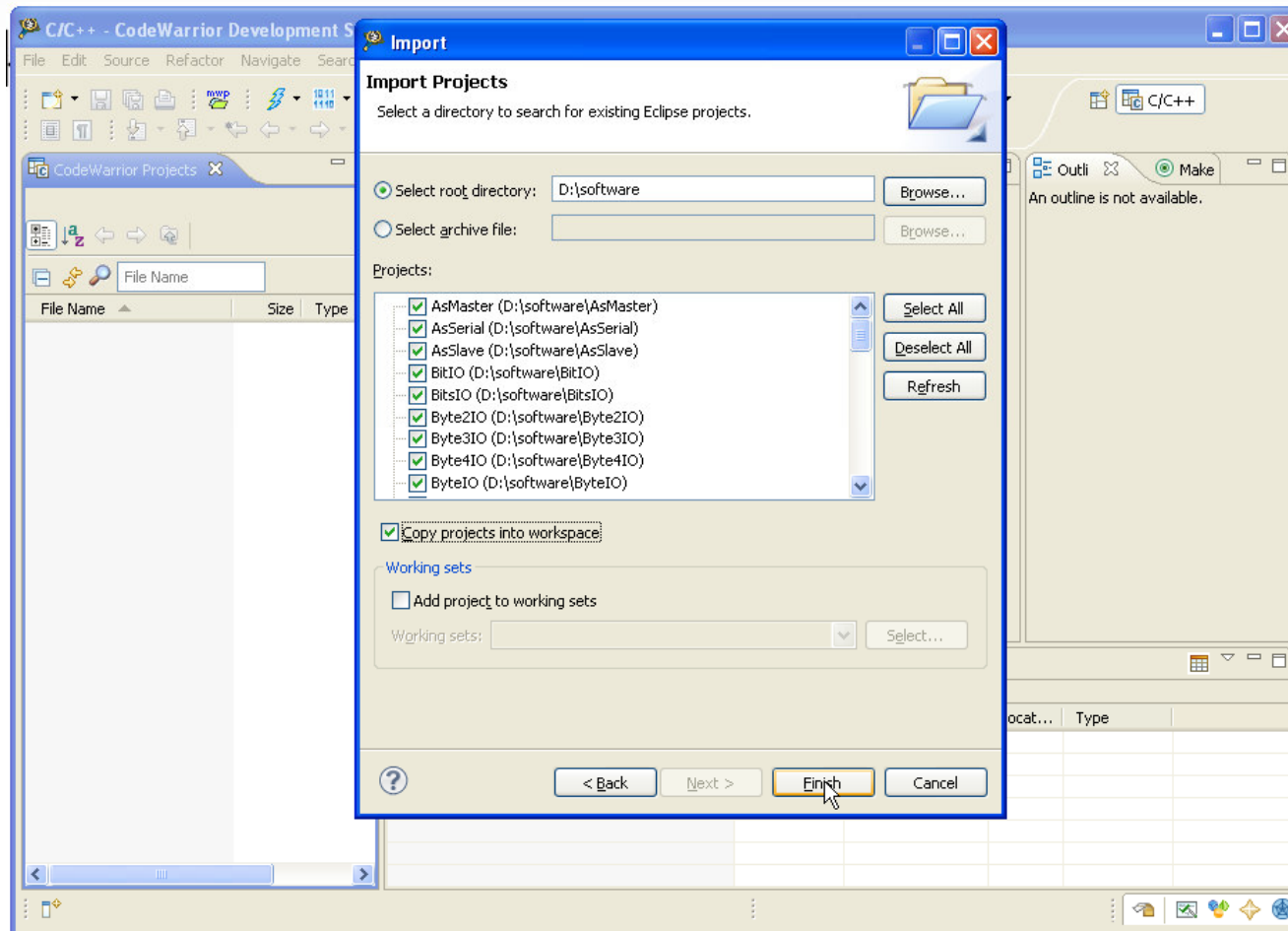


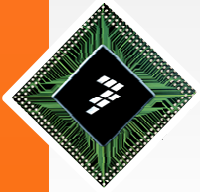
“Copy projects into workspace”



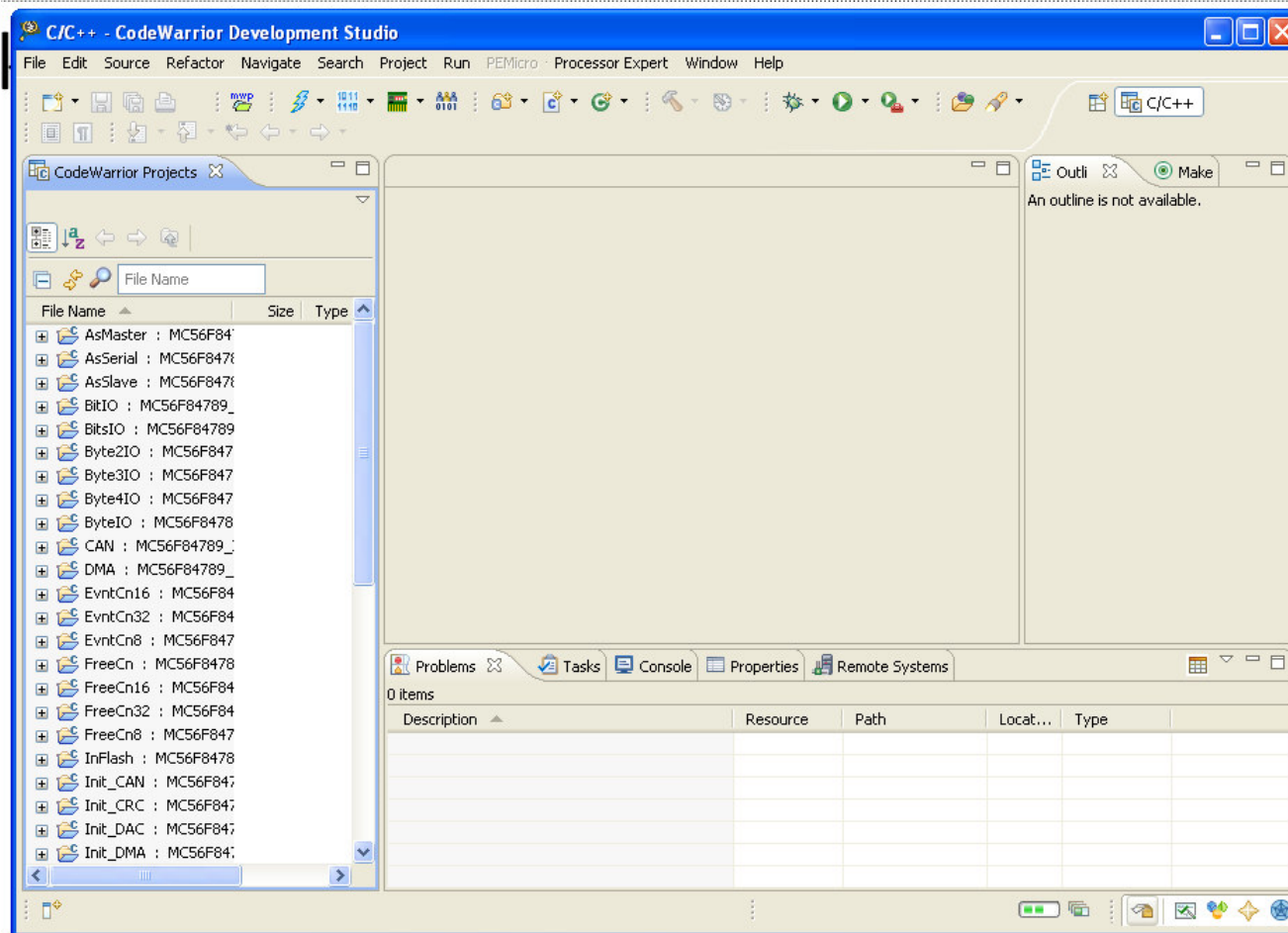


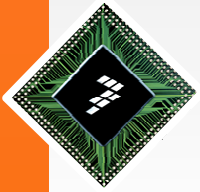
“Finish” now by clicking it





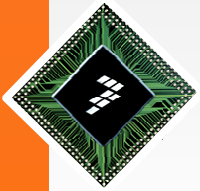
This step takes a while



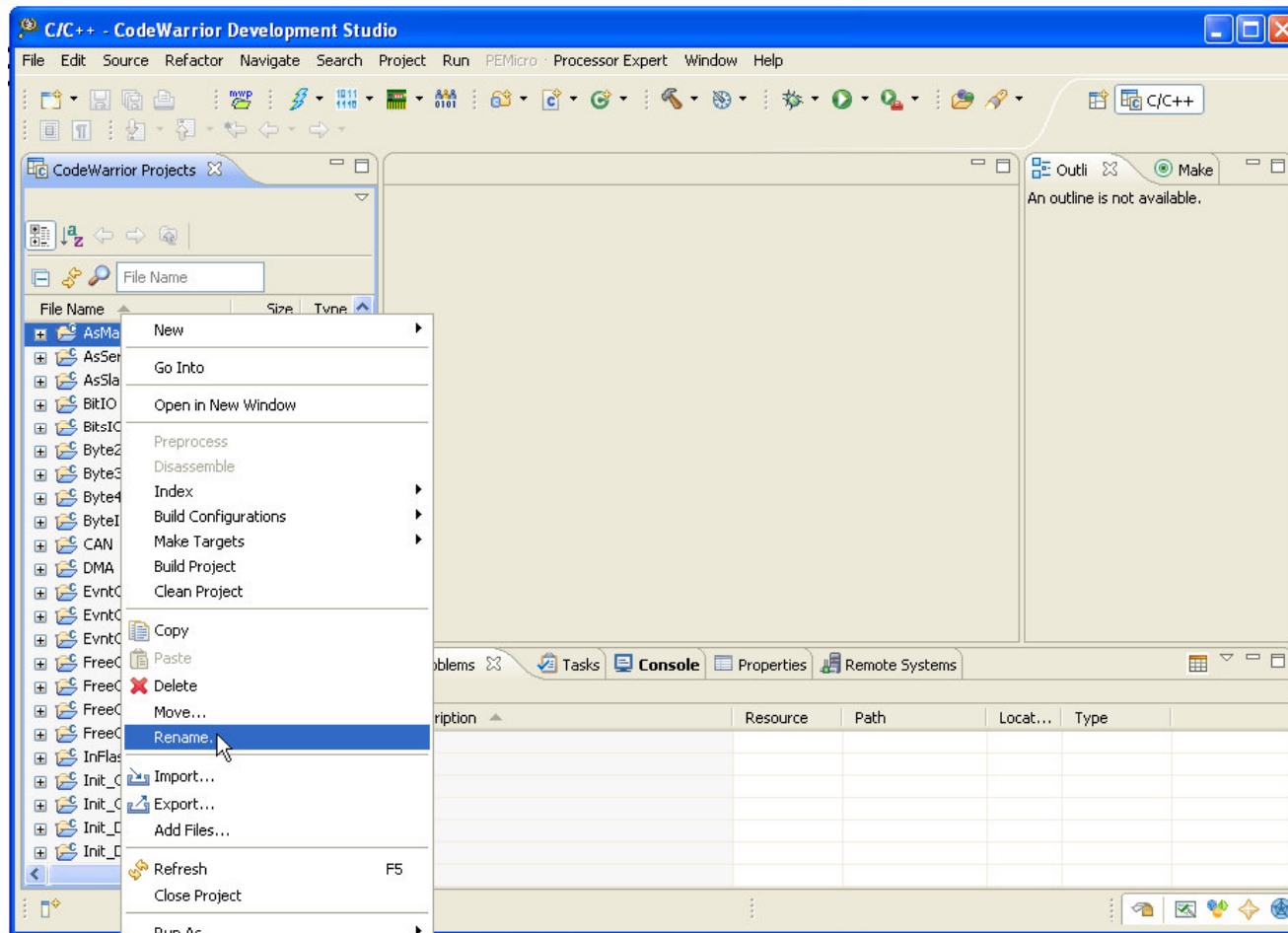


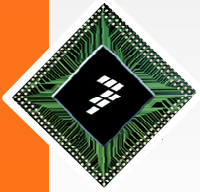
Importation takes time – installing projects

- Let the system index the files and integrate them into your workarea
- Be sure to check the activity is finished prior to working with the new copies of the projects
- After the system is quieted, you may rename these projects to “make them your own”.
- Internal components may retain original names, but this is ok due to directory location.
- **NOTE: To save time on importation now, just import the one project you want to use now**

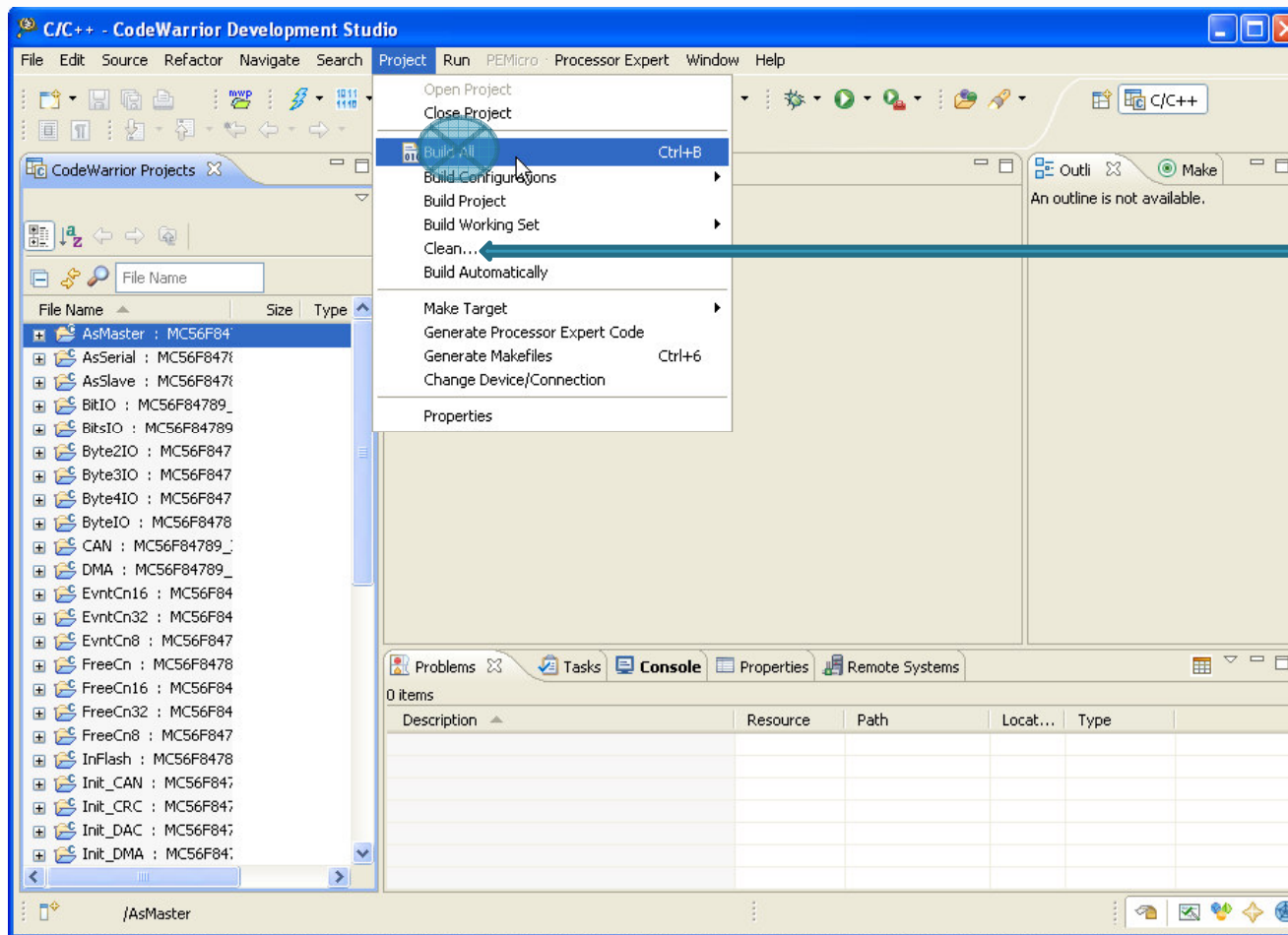


You can rename to suit you



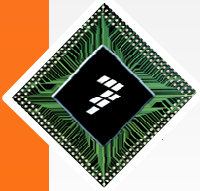


“Project” menu “Clean”



Use “Clean...” instead of “Build All”

“Clean...” will allow you to do a clean-all followed by a build-all.
Do it that way.



“Console” shows last target built
targets built

This means all
targets built

