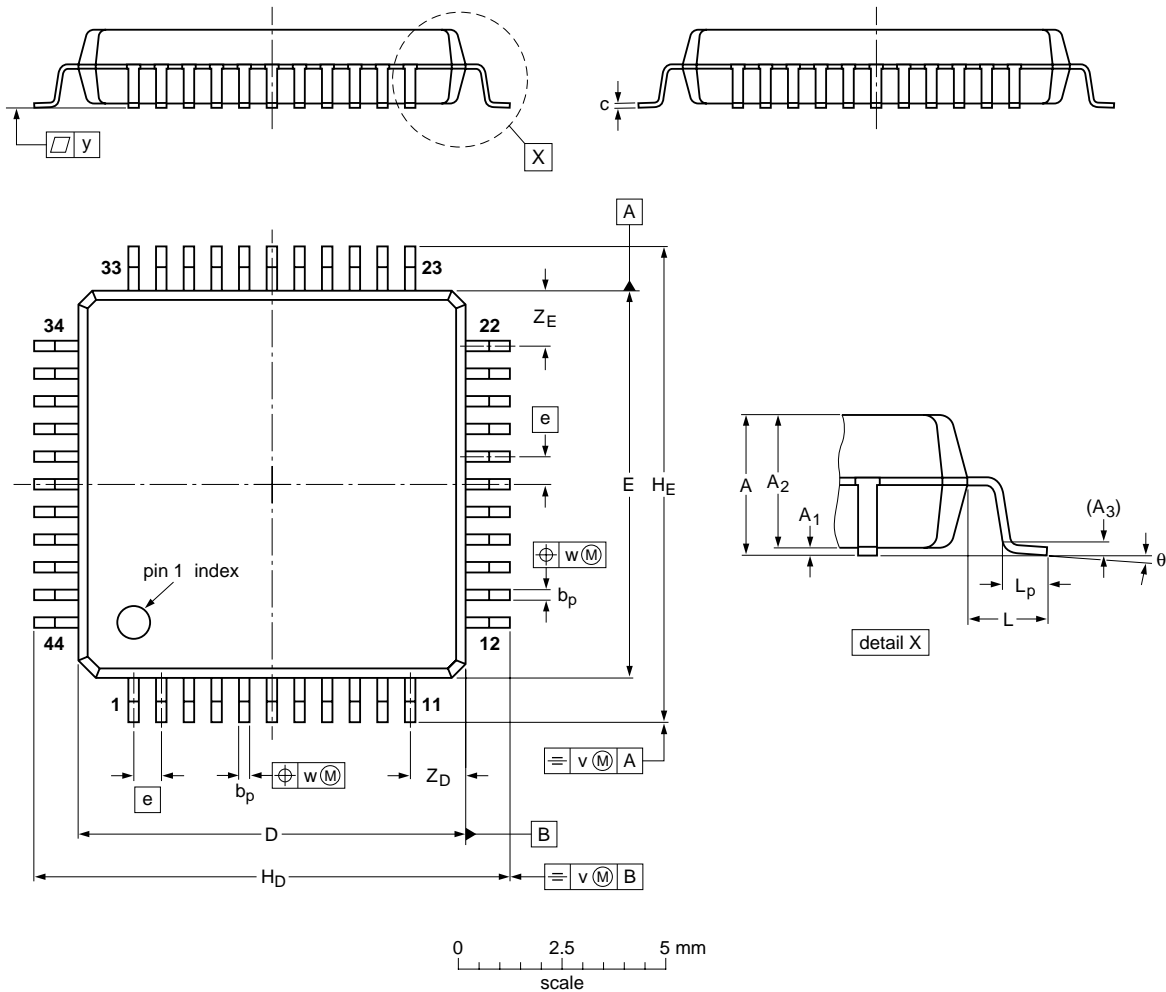


QFP44: plastic quad flat package; 44 leads (lead length 1.6 mm); body 14 x 14 x 2.7 mm

SOT853-1



DIMENSIONS (mm are the original dimensions)

UNIT	A _{max}	A ₁	A ₂	A ₃	b _p	c	D ⁽¹⁾	E ⁽¹⁾	e	H _D	H _E	L	L _p	v	w	y	Z _D ⁽¹⁾	Z _E ⁽¹⁾	θ
mm	3	0.25 0.10	2.75 2.55	0.25	0.45 0.30	0.23 0.13	14.1 13.9	14.1 13.9	1	17.45 16.95	17.45 16.95	1.6	1.03 0.73	0.16	0.16	0.1	2.2 1.8	2.2 1.8	7° 0°

Note

1. Plastic or metal protrusions of 0.25 mm maximum per side are not included

OUTLINE VERSION	REFERENCES				EUROPEAN PROJECTION	ISSUE DATE
	IEC	JEDEC	JEITA			
SOT853-1						04-04-20