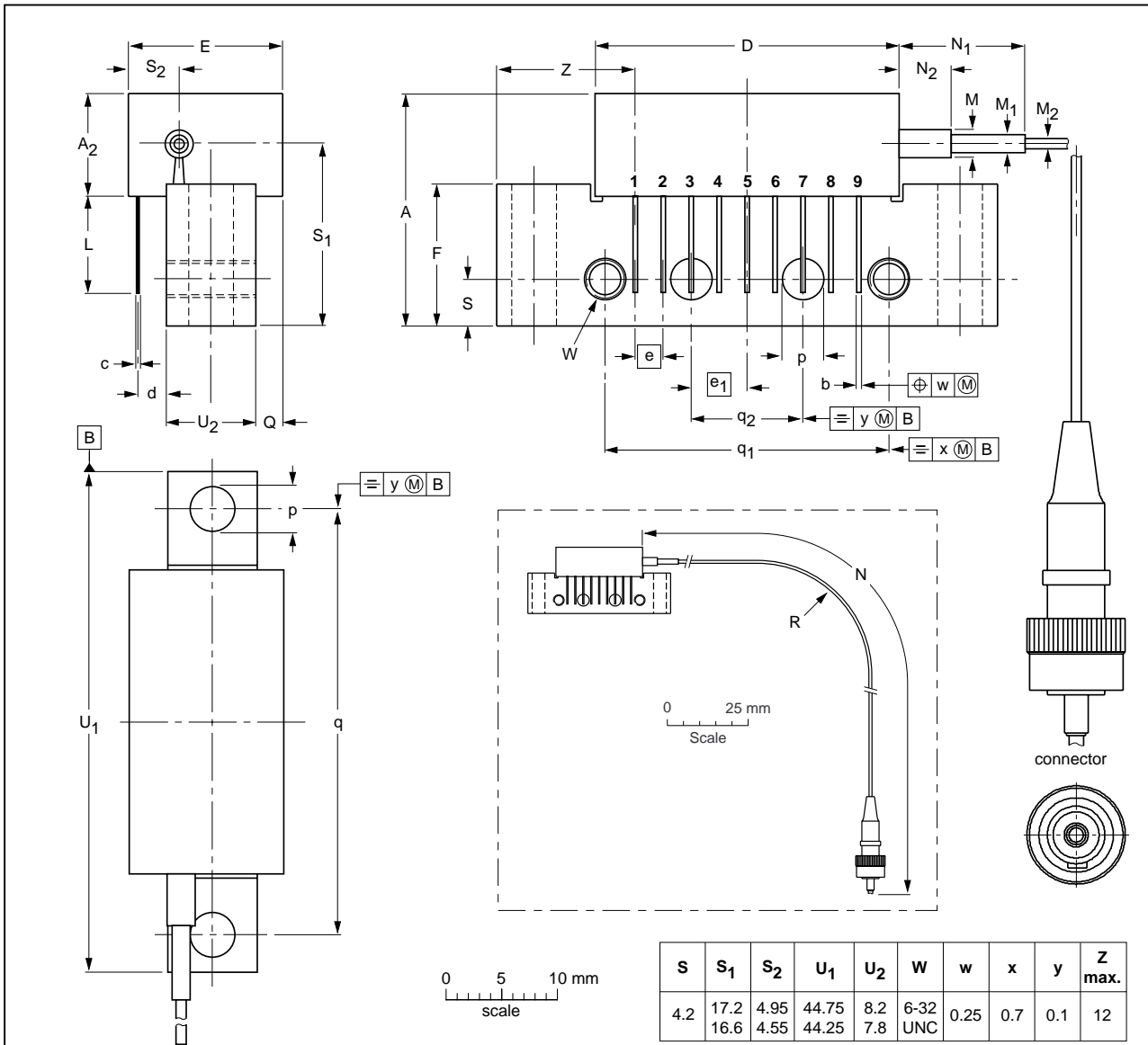


Rectangular single-ended package; aluminium flange; 2 vertical mounting holes; 2 x 6-32 UNC and 2 extra horizontal mounting holes; optical input with connector; 9 gold-plated in-line leads SOT115AF



S	S ₁	S ₂	U ₁	U ₂	W	w	x	y	Z
max.									
4.2	17.2	4.95	44.75	8.2	6-32	0.25	0.7	0.1	12
min.									
	16.6	4.55	44.25	7.8	UNC				

DIMENSIONS (mm are the original dimensions)

UNIT	A	A ₂	b	c	D	d	E	e	e ₁	F	L	M	M ₁	M ₂	N	N ₁	N ₂	p	Q	q	q ₁	q ₂	R		
max.																									
mm	20.8	9.1	0.51	0.25	27.2	2.54	13.75	2.54	5.08	12.7	8.8	2.5	1.6	0.9	861	10.7	5	4.15	2.4	38.1	25.4	10.2	35		
min.																									

OUTLINE VERSION	REFERENCES				EUROPEAN PROJECTION	ISSUE DATE
	IEC	JEDEC	JEITA			
SOT115AF						02-03-18 04-02-05