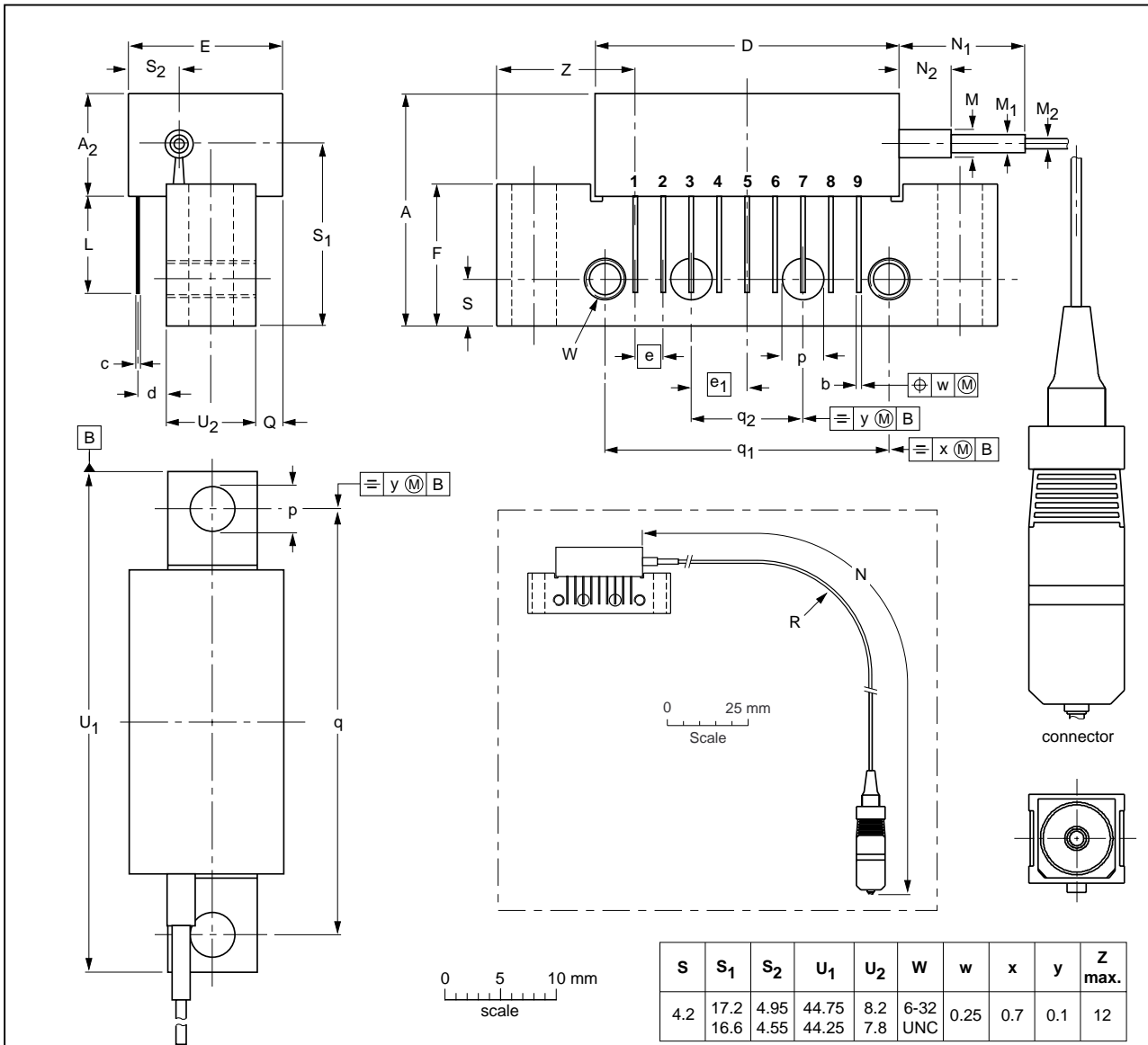


Rectangular single-ended package; aluminium flange; 2 vertical mounting holes; 2 x 6-32 UNC and 2 extra horizontal mounting holes; optical input with connector; 9 gold-plated in-line leads SOT115AG



S	S ₁	S ₂	U ₁	U ₂	W	w	x	y	Z max.
4.2	17.2	4.95	44.75	8.2	6-32	0.25	0.7	0.1	12
	16.6	4.55	44.25	7.8	UNC				

DIMENSIONS (mm are the original dimensions)

UNIT	A max.	A ₂ max.	b	c	D max.	d max.	E max.	e	e ₁	F	L min.	M	M ₁	M ₂	N	N ₁	N ₂	p	Q max.	q	q ₁	q ₂	R min.
mm	20.8	9.1	0.51 0.38	0.25	27.2	2.54	13.75	2.54	5.08	12.7	8.8	2.5	1.6	0.9	861 746	10.7 0.0	5 0	4.15 3.85	2.4	38.1	25.4	10.2	35

OUTLINE VERSION	REFERENCES				EUROPEAN PROJECTION	ISSUE DATE
	IEC	JEDEC	JEITA			
SOT115AG						-03-06-20 04-02-04