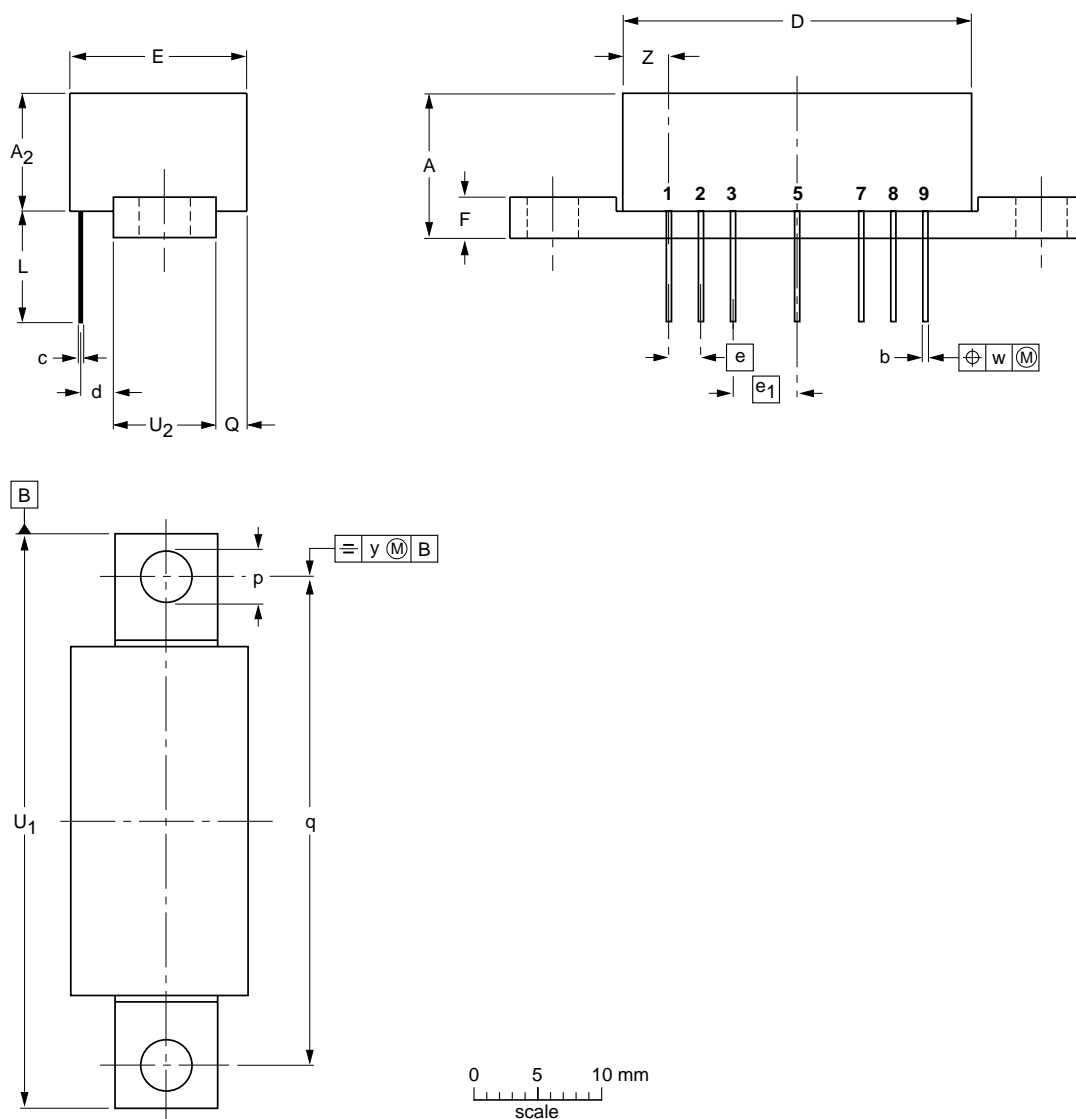


Rectangular single-ended package; aluminium flange; 2 vertical mounting holes;
7 gold-plated in-line leads

SOT115L



DIMENSIONS (mm are the original dimensions)

UNIT	A max.	A ₂ max.	b	c	D max.	d max.	E max.	e	e ₁	F	L min.	p	Q max.	q	U ₁ max.	U ₂	w	y	Z max.
mm	11.5	9.1	0.51 0.38	0.25	27.2	2.54	13.75	2.54	5.08	3.2	8.8	4.15 3.85	2.4	38.1	44.75	8	0.25	0.1	3.8

OUTLINE VERSION	REFERENCES				EUROPEAN PROJECTION	ISSUE DATE
	IEC	JEDEC	EIAJ			
SOT115L						99-02-06