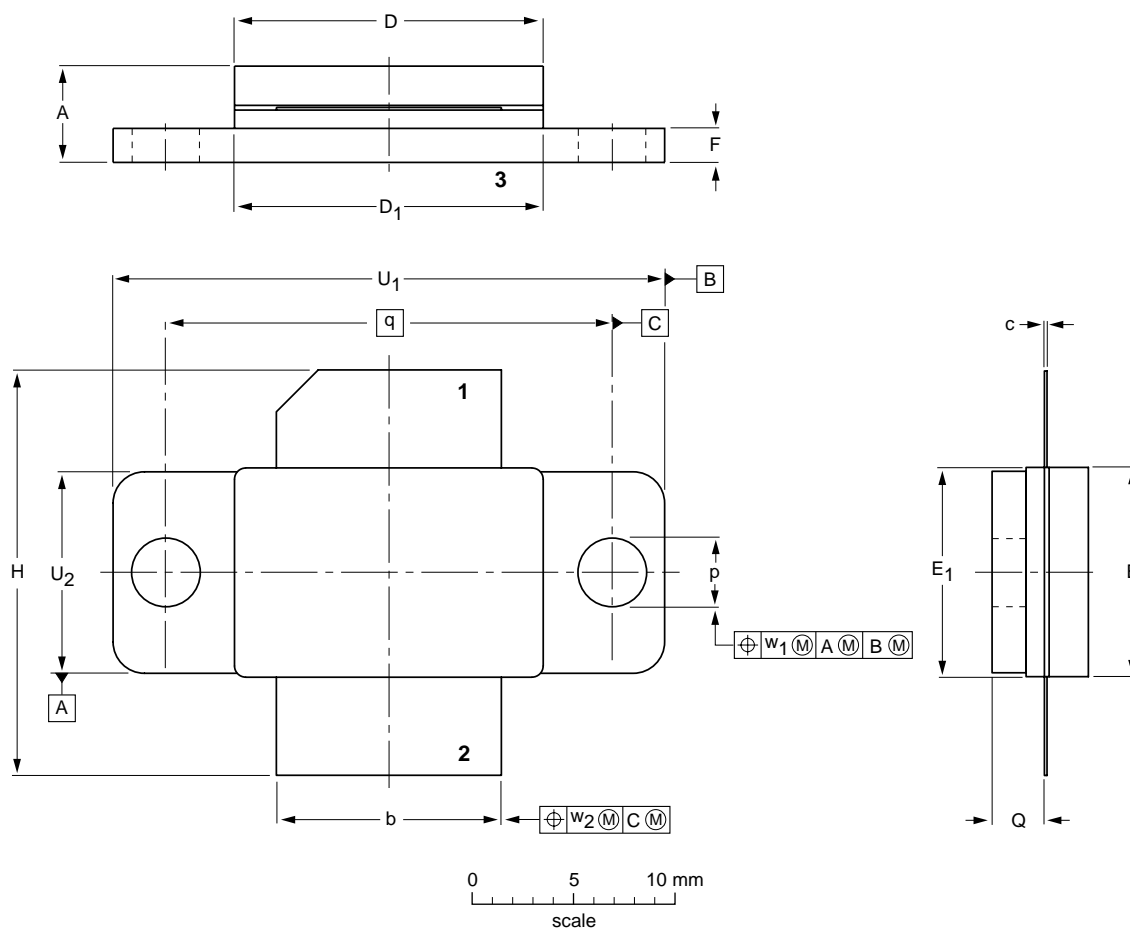


Flanged LDMOST ceramic package; 2 mounting holes; 2 leads

SOT541A



DIMENSIONS (millimetre dimensions are derived from the original inch dimensions)

UNIT	A	b	c	D	D ₁	E	E ₁	F	H	p	Q	q	U ₁	U ₂	w ₁	w ₂
mm	5.74 4.60	11.05 10.80	0.18 0.10	15.39 15.09	15.39 15.09	10.26 10.06	10.29 10.03	1.78 1.52	20.83 19.81	3.43 3.18	2.69 2.44	22.10	27.31 27.05	9.91 9.65	0.25	0.51
inches	0.226 0.181	0.435 0.425	0.007 0.004	0.606 0.594	0.606 0.594	0.404 0.396	0.405 0.395	0.070 0.060	0.820 0.780	0.135 0.125	0.106 0.096	0.87	1.075 1.065	0.390 0.380	0.01	0.02

OUTLINE VERSION	REFERENCES			EUROPEAN PROJECTION	ISSUE DATE
	IEC	JEDEC	EIAJ		
SOT541A					00-01-13- 00-03-03