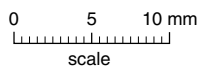
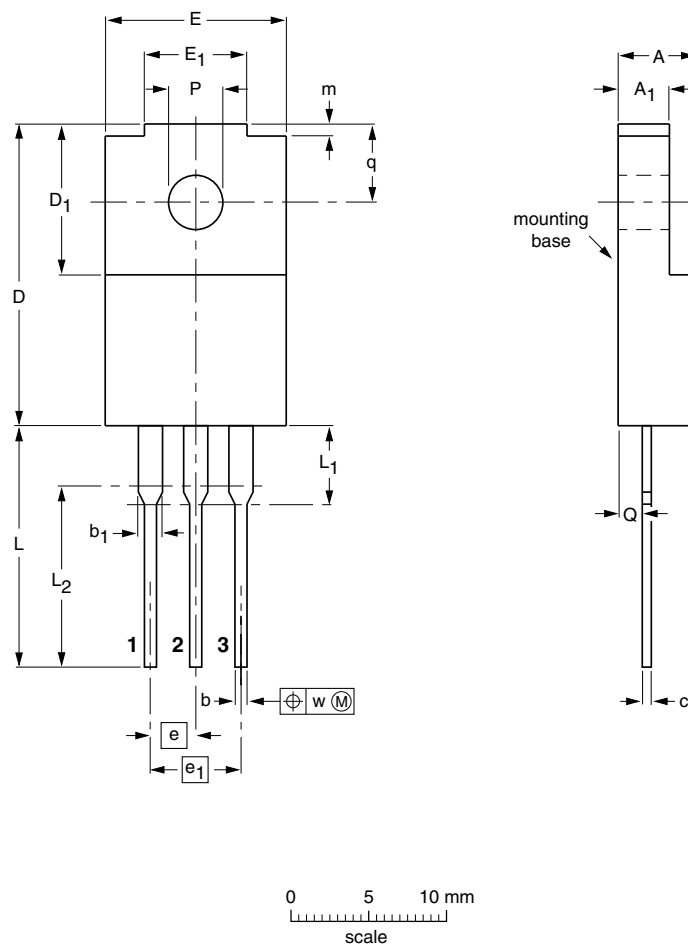


Plastic single-ended package; isolated heatsink mounted;
1 mounting hole; 3-lead TO-220 'full pack' exposed tabs

SOT186

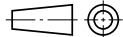


DIMENSIONS (mm are the original dimensions)

UNIT	A	A ₁	b	b ₁	c	D	D ₁	E	E ₁	e	e ₁	L	L ₁ ⁽¹⁾	L ₂	m	P	Q	q	w
mm	4.4	2.9	0.9	1.5	0.55	17.0	7.9	10.2	5.7	2.54	5.08	14.3	4.8	10	0.9	3.2	1.4	4.4	0.4
	4.0	2.5	0.7	1.3	0.38	16.4	7.5	9.6	5.3			13.5	4.0		0.5	3.0	1.2	4.0	

Note

1. Terminal dimensions within this zone are uncontrolled. Terminals in this zone are not tinned.

OUTLINE VERSION	REFERENCES			EUROPEAN PROJECTION	ISSUE DATE
	IEC	JEDEC	EIAJ		
SOT186		3-lead TO-220F	SC-67		99-09-13 02-03-12