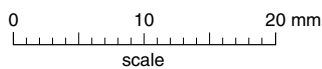
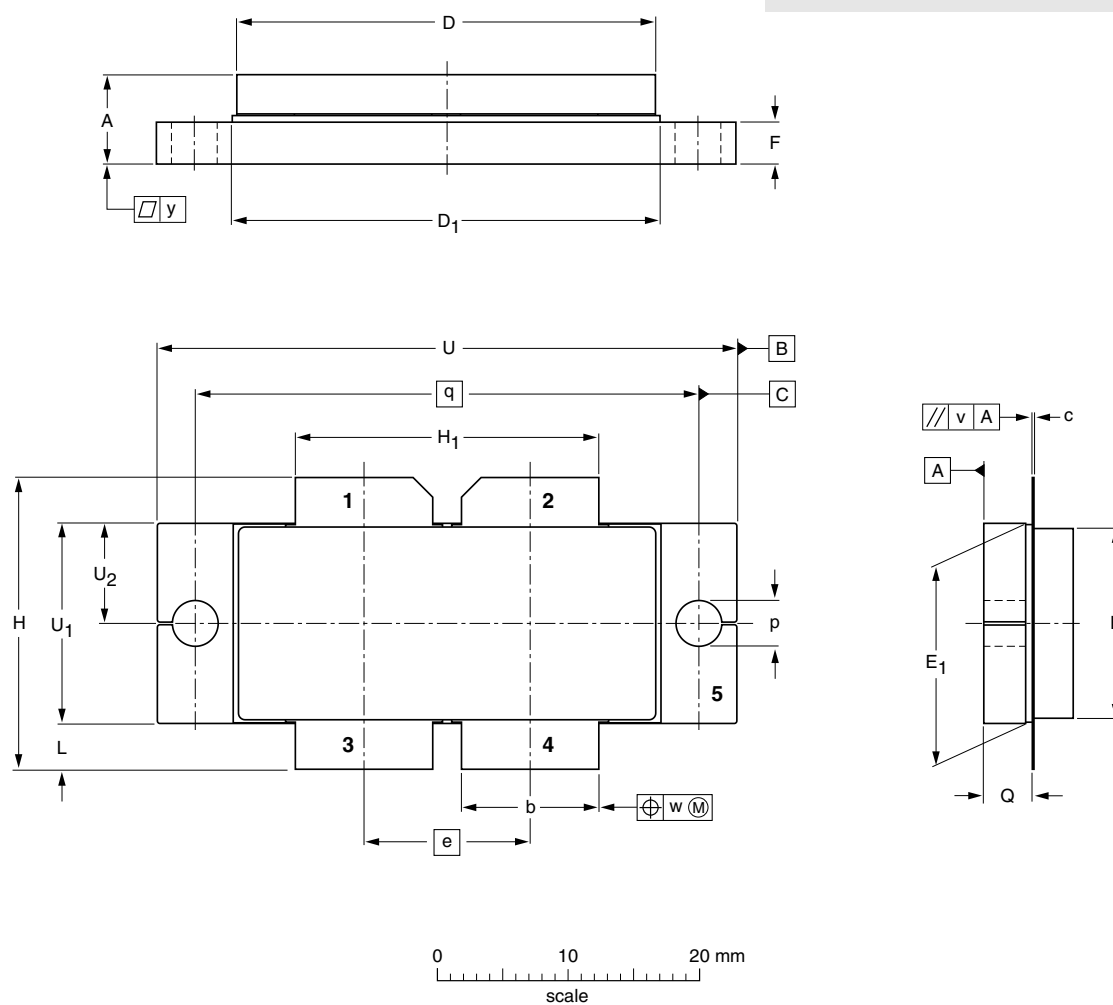


## Flanged double-ended ceramic package; 2 mounting holes; 4 leads

SOT800A

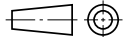
### Package under development

Philips Semiconductors reserves the right to make changes without notice.



### DIMENSIONS (mm dimensions are derived from the original inch dimensions)

UNIT	A	b	c	D	D <sub>1</sub>	E	E <sub>1</sub>	e	F	H	H <sub>1</sub>	L	p	Q	q	U	U <sub>1</sub>	U <sub>2</sub>	v	w	y
mm	7.1 6.6	10.55 10.45	0.15 0.10	32.3 31.7	32.8 32.6	14.6 14.4	15.3 15.1	12.7	3.3 3.1	22.8 21.8	23.35 23.05	3.7 3.3	3.56 3.51	4.0 3.7	38.55 38.45	44.5 44.2	15.4 15.0	7.75 7.55	0.3	0.25	0.1

OUTLINE VERSION	REFERENCES			EUROPEAN PROJECTION	ISSUE DATE
	IEC	JEDEC	JEITA		
SOT800A					03-11-18