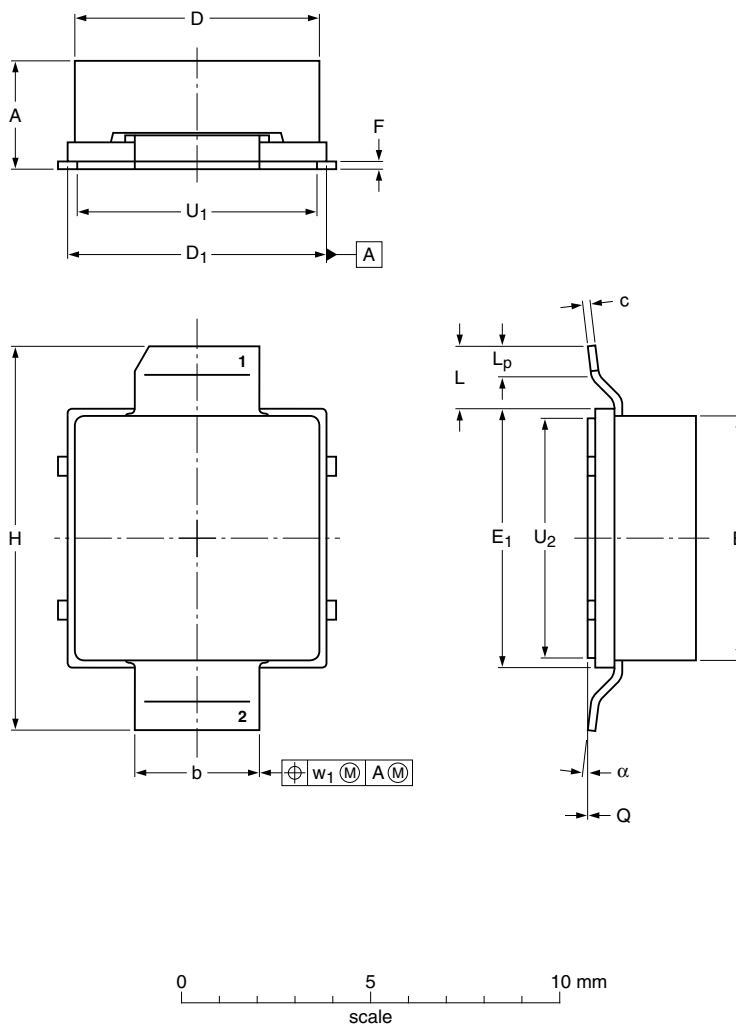


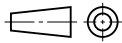
Earless flanged ceramic package; 2 leads

SOT975C



DIMENSIONS (millimetre dimensions are derived from the original inch dimensions)

UNIT	A	b	c	D	D ₁	E	E ₁	F	H	L	L _p	Q	U ₁	U ₂	w ₁	α
mm	3.63 3.05	3.38 3.23	0.23 0.18	6.55 6.40	6.93 6.78	6.55 6.40	6.93 6.78	0.23 0.18	10.29 10.03	1.65	1.02 0.51	+0.05 -0.05	6.43 6.27	6.43 6.27	0.51	7° 0°
inches	0.143 0.120	0.133 0.127	0.009 0.007	0.258 0.252	0.273 0.267	0.258 0.252	0.273 0.267	0.009 0.007	0.405 0.395	0.065	0.040 0.020	+0.002 -0.002	0.253 0.247	0.253 0.247	0.020	7° 0°

OUTLINE VERSION	REFERENCES			EUROPEAN PROJECTION	ISSUE DATE
	IEC	JEDEC	JEITA		
SOT975C					08-05-20 08-07-10