

# AN11085

## Using Speex in NXP's LPC175x/6x MCU family

Rev. 2 — 5 March 2012

Application note

### Document information

Info	Content
<b>Keywords</b>	LPC175x/6x, LPC1759FBD80, LPC1758FBD80, LPC1756FBD80, LPC1754FBD80, LPC1752FBD80, LPC1751FBD80, LPC1769FBD100, LPC1768FBD100, LPC1768FET100, LPC1767FBD100, LPC1766FBD100, LPC1765FBD100, LPC1764FBD100, LPC1763FBD100
<b>Abstract</b>	This document describes the use of Speex's Codec in NXP's LPC175x/6x family of microcontrollers.



**Revision history**

Rev	Date	Description
2	20120305	Second version, to match with updated firmware.
1	20110616	Initial version.

**Contact information**

For more information, please visit: <http://www.nxp.com>

For sales office addresses, please send an email to: [salesaddresses@nxp.com](mailto:salesaddresses@nxp.com)

## 1. Introduction

---

### 1.1 Overview

Once designed to be a free alternative to expensive speech codecs, Speex is an Open Source / Free software patent-free audio compression format designed for speech. Speex is part of the GNU project and this application note provides information regarding the usage of this library on NXP's LPC175x/6x microcontrollers (based on Cortex-M3).

#### 1.1.1 Speex features

The Speex library is based on Code-Excited Linear Prediction (CELP). It is designed to compress voice at bitrates ranging from 2 kb/s to 44 kb/s. Some of Speex's features include:

- Narrowband (8 kHz), wideband (16 kHz), and ultra-wideband (32 kHz) compression in the same bitstream
- Intensity stereo encoding
- Packet loss concealment
- Variable bitrate operation (VBR)
- Voice Activity Detection (VAD)
- Discontinuous Transmission (DTX)
- Fixed-point port
- Acoustic echo canceller
- Noise suppression

Note that Speex has a number of features that are not present in other codecs, such as intensity stereo encoding, integration of multiple sampling rates in the same bitstream (embedded coding), and a VBR mode.

For more information regarding Speex visit <http://speex.org/docs/>.

#### 1.1.2 Applications

The Speex library can be used in various applications, such as VoIP, internet audio streaming, data archiving (e.g., voice mail), and audio books.

#### 1.1.3 About this document

The purpose of this application note is to describe the Speex library features and interface and provide the source code containing the library and a sample application to be used with a LPC175x/6x microcontroller, compatible with Keil MDK, IAR EWARM and LPCXpresso IDE's.

## 1.2 LPC175x/6x features

The LPC175x/6x is an ARM Cortex-M3 based microcontroller for embedded applications requiring a high level of integration and low power dissipation. It operates at frequencies up to 100 MHz (120 MHz in LPC1759 and LPC1769 versions). Some details of the peripherals used in this application are listed below:

- 12-bit Analog-to-Digital Converter (ADC) with input multiplexing among eight pins, conversion rates up to 200 kHz, and multiple result registers. The 12-bit ADC can be used with the GPDMA controller.
- 10-bit Digital-to-Analog Converter (DAC) with dedicated conversion timer and DMA support.
- Four general purpose timers/counters, with a total of eight capture inputs and ten compare outputs. Each timer block has an external count input. Specific timer events can be selected to generate DMA requests.
- Three enhanced I<sup>2</sup>C-bus interfaces, one with an open-drain output supporting the full I<sup>2</sup>C specification and Fast mode plus with data rates of 1 Mbit/s, two with standard port pins. Enhancements include multiple address recognition and monitor mode.
- I<sup>2</sup>S (Inter-IC Sound) interface for digital audio input or output, with fractional rate control. The I<sup>2</sup>S interface can be used with the GPDMA. The I<sup>2</sup>S interface supports 3-wire data transmit and receive or 4-wire combined transmit and receive connections, as well as master clock output.

## 1.3 About Code Red's RBD1768 development board

Code Red Technologies offers a development board containing an LPC1768 and several hardware options for evaluating and testing the LPC1768 features. This demo uses NXP's UDA1380 I2S Stereo Codec which is integrated on the evaluation board. It also contains an input for the ADC and an output for the DAC pins, allowing the application to integrate various working modes, merging usage of the converters and I2S codec interface.

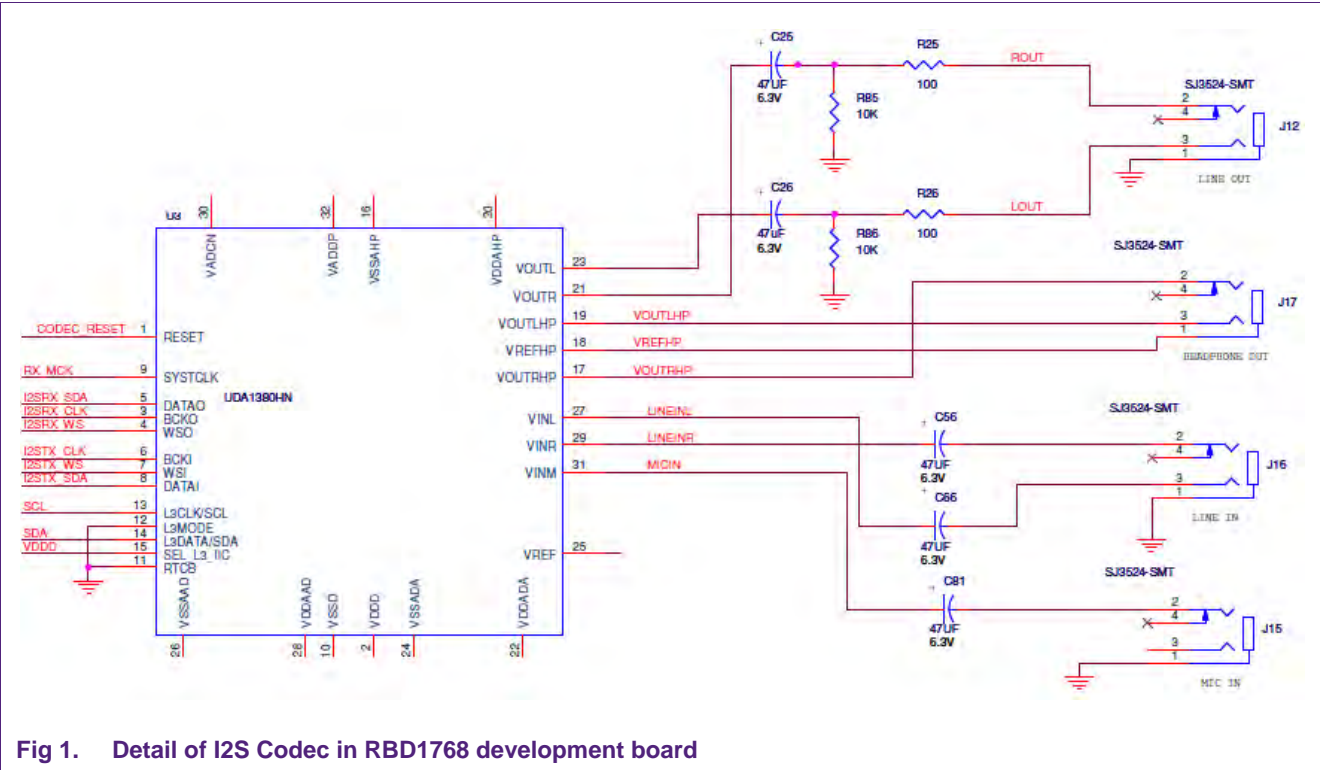


Fig 1. Detail of I2S Codec in RBD1768 development board

## 2. Application

### 2.1 Vocoder overview

The application proposed is a Vocoder using LPC1768. Vocoder is analysis and processing systems mostly used for voice applications. It treats the audio signal enhancing the bandpass related to the voice spectrum frequencies, encoding, decoding, filtering and finally amplifying it.

The application software processes Speex data, capturing data either from ADC or I2S and to deliver it either to DAC or I2S. The application allows usage of ADC and DAC converters in case of I2S codec is not available:

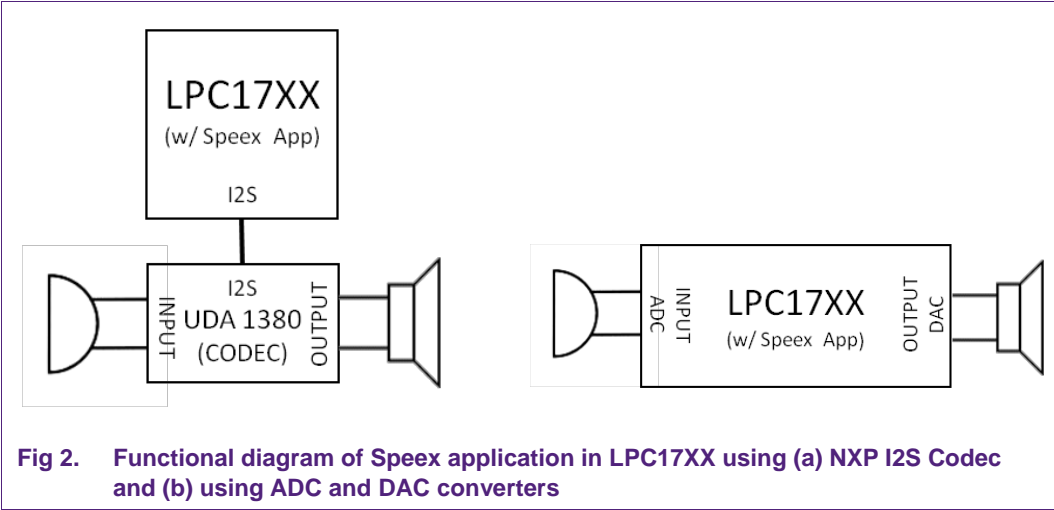


Fig 2. Functional diagram of Speex application in LPC17XX using (a) NXP I2S Codec and (b) using ADC and DAC converters

## 2.2 Memory requirements

The LPC175x/6x microcontroller has sufficient internal SRAM to meet the memory requirements for Speex. One adjustment is necessary in heap size, in order to enable the data to be processed correctly. Because the Speex CODEC demands a large portion of heap memory for dynamic allocation, a minimum of 8 kB is necessary to allocate all necessary data.

[Table 1](#) shows the amount of memory used by application using the three IDE's (Keil MDK, IAR EWARM, LPCXpresso). Based on these values a suitable member of the LPC175x/6x family can be selected. For these specific examples, LPC1751 and LPC1752 don't match the memory requirements.

**Table 1. Memory usage**

IDE	Flash usage (bytes)	RAM usage (bytes)
Keil RVMDK	49900	10120
IAR EWARM	36346	18196
LPCXpresso <sup>[1]</sup>	86676	18272

[1] LPCXpresso code size includes the UDA1380 Library and is also not optimized.

## 2.3 Speex application implementation

### 2.3.1 Codec settings

#### 2.3.1.1 Sampling rate

The LPC175x/6x port for the Speex codec works only with narrowband (8 kHz sampling rate);

#### 2.3.1.2 Speex Parameters

Below are some parameters required to configure the Speex codec in this application. The default values are:

- Quality – Encoder quality is set to 4
- VBR – Variable Bit-Rate is disabled
- Complexity – Encoder complexity is set to 1
- Enhancer – Decoder audio enhancer feature is enabled

### 2.3.2 Environment features and requirements

All code examples were written using CMSIS resources, including the LPC175x/6x CMSIS-Compliant Standard Peripheral Firmware Driver Library (Jan 28, 2011) available here:

<http://ics.nxp.com/support/documents/microcontrollers/zip/lpc17xx.cmsis.driver.library.zip>

In IAR EWARM and Keil RVMDK the Heap Size was set to 0x2000 in order to allow Speex to allocate the necessary memory.

According to Speex specification, for a sampling rate of 8 kHz, the frame size is 20 ms, corresponding to 160 samples. For the application ported to RDB1768v2, without any optimization, LPC1768 running at 100 MHz takes about 17 ms to encode a single frame,

and up to 4.5 ms for decoding<sup>1</sup>. This makes the LPC175x/6x suitable for real-time encoding or decoding.

### 2.3.3 Using libSpeex

In order to use libSpeex functions for encoding/decoding speech, a Speex bit-packing struct must be declared, along with a Speex encoder state:

```
SpeexBits bits;  
void *enc_state;
```

The struct bits, encoder and decoder are initialized by `spx_Init`, using a `SPX_CODEC_CFG_Type` for CODEC configuration, as shown in [Fig 3](#) and [Fig 4](#).

```
SPX_CODEC_CFG_Type spx_config;  
  
/* Speex CODEC configuration */  
spx_config.quality = 4; /* Encoder parameter */  
spx_config.complexity = 1; /* Encoder parameter */  
spx_config.vbr = SPX_VBR_DISABLED; /* Encoder parameter */  
spx_config.enh = SPX_ENHANCER_ENABLED; /* Decoder parameter */  
spx_Init(&spx_config);
```

**Fig 3. Speex configuration struct**

1. Only during encoding or decoding, P0\_25 is set to a high level providing a simple approach for time measurement.

```
void spx_Init(SPX_CODEEC_CFG_Type *SpxCfg)
{
    Speex_bits_init(&bits);
    /* Speex encoding initializations */
    enc_state = Speex_encoder_init(&Speex_nb_mode);
    Speex_encoder_ctl(enc_state, SPEEX_SET_VBR, &SpxCfg->vbr);
    Speex_encoder_ctl(enc_state, SPEEX_SET_QUALITY, &SpxCfg->quality);
    Speex_encoder_ctl(enc_state, SPEEX_SET_COMPLEXITY, &SpxCfg->complexity);
    /* Speex decoding initialization */
    dec_state = Speex_decoder_init(&Speex_nb_mode);
    Speex_decoder_ctl(dec_state, SPEEX_SET_ENH, &SpxCfg->enh);
}
```

**Fig 4. Speex initialization**

## 2.4 Application description

Examples are provided for three LPC175x/6x evaluation boards, Code Red RDB1768v2, Keil MCB1700 and IAR LPC1768-SK.

The Vocoder application examples provide one or two functions, depending on the board used:

1. Recording function: Through a routine call, the application obtains the audio stream from an input (I<sup>2</sup>S or ADC), encodes it and then stores it into the RAM. This function is available only in applications for IAR LPC1768-SK and Code\_Red RDB1768v2 boards.
2. Playback function: The application loads a voice audio stream previously stored in RAM memory, decodes it and delivers the audio to the appropriate output (I<sup>2</sup>S or DAC). This function is available in all three evaluation boards.

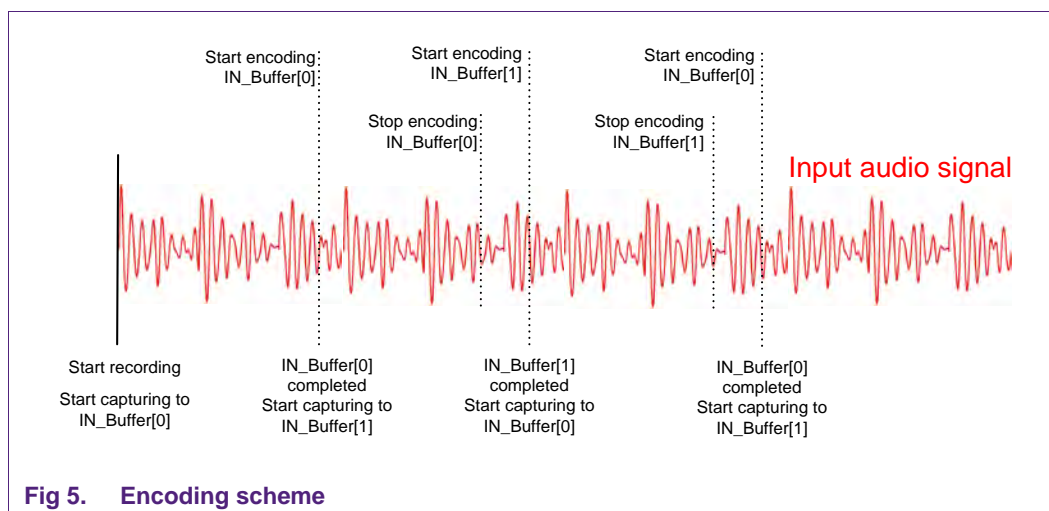
### 2.4.1 Record process

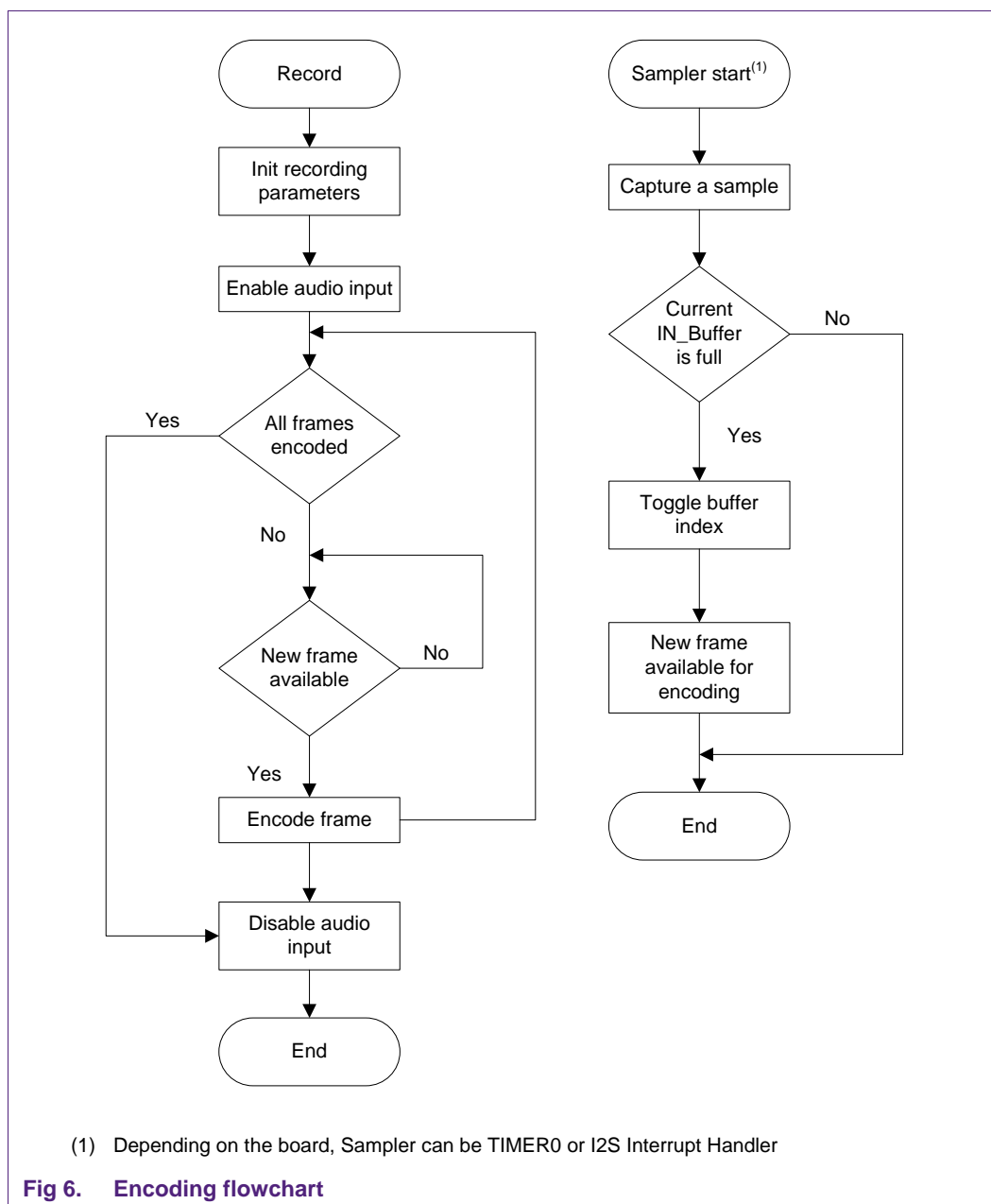
Two buffers are used to store the input frames: IN\_Buffer[0] and IN\_Buffer[1]. At the beginning of a encoding process, the sampler uses IN\_Buffer[0] to store the first 160 samples. As the sampler starts to store the next 160 frames in IN\_Buffer[1], the encoder starts encoding IN\_Buffer[0]. The sampler and the encoder are always alternating the buffers' accesses. Each encoded frame is composed of 20 bytes, and a buffer called output\_bytes uses the Speex encoder to store the encoded frame. [Fig 5](#) shows the encoding scheme and [Fig 6](#) the flowchart.

The application can record 6 seconds (300 frames) of voice by using an array of 6000 bytes. For IAR LPC1768-SK board, the sampler is composed by the ADC and a TIMER. The audio level is converted by the ADC inside the TIMER0 interrupt handler, which is programmed to be called every 125 us (8 kHz).

For the Code Red RDB1768 board, samples are captured from the I2S interface. The I2S frequency is adjusted to allow UDA1380 Audio Codec transfer sample data at a frequency of 8 kHz. This data is saved in IN\_Buffer's inside I2S interrupt handler.



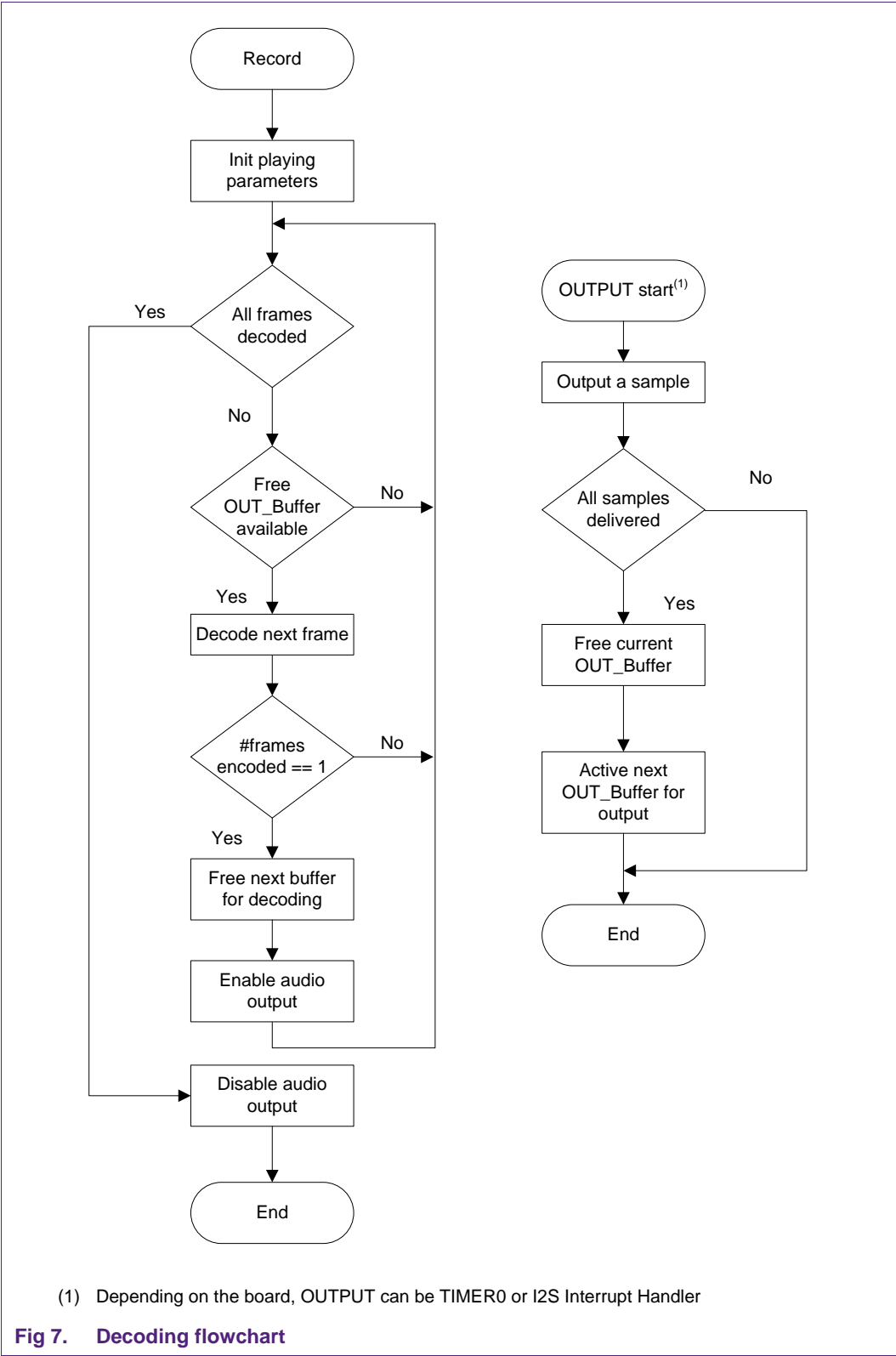


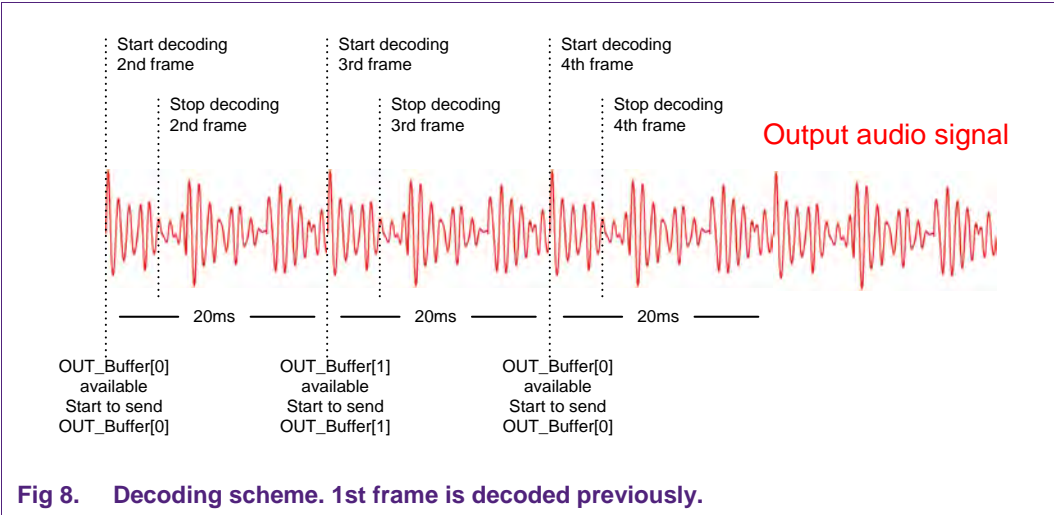


### 2.4.2 Playback process

The playback process is similar to the encoding process. Two buffers are used to deliver frame data to the output.

The first encoded frame (20 bytes) is taken from the 6 kB array, decoded and the resulting frame is stored in OUT\_Buffer[0]. The Decoder starts decoding the next Speex frame, storing the result in OUT\_Buffer[1] while OUT\_Buffer[0] is delivered to the output (DAC for IAR LPC1768-SK, and I2S transmitter for code\_red RDB1768). It continues until all Speex frames are decoded. [Fig 7](#) and [Fig 8](#) illustrate the decoding process.





2.4.3 Audio input/output for RDB1768 board

The CodeRed RDB1768 board uses an external Audio Codec (UDA1380) for input/output audio signal. This external coder-decoder is configured to capture audio from the MIC input, which is then sent to the microcontroller using the I2S interface. The LPC175x/6x I2S controller is configured as follows:

- Bit clock = 16 kHz (resulting in 8 k samples per second, as the UDA1380 will always transfer stereo data);
- Transmitter master, Receiver master;
- 16-bit data words, MONO.

The UDA1380 sends data according to WS and BCK signals generated by LPC1768. Because the microphone signal is MONO, the same value is sent as RIGHT and LEFT data.

When configured for 16-bit word, the 32 bits RX FIFO contains two consecutive 16-bit samples after a complete WS cycle. The RX FIFO contents and I2S bus format sent by UDA1380 are shown in [Fig 9](#) and [Fig 10](#). An oscilloscope screen of a transition is shown in [Fig 11](#).

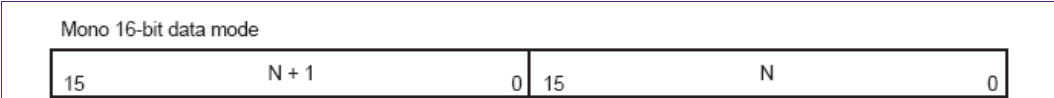


Fig 9. RX FIFO content of LPC175x/6x, 2 mono samples transferred

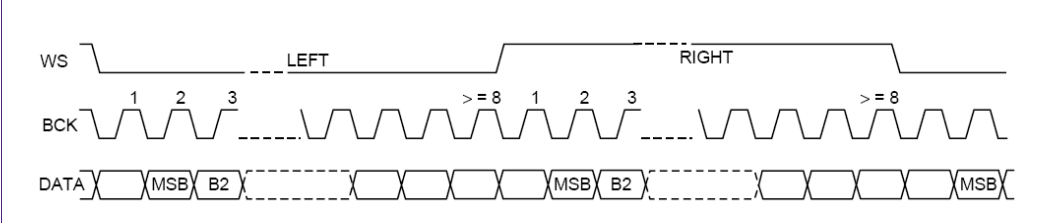
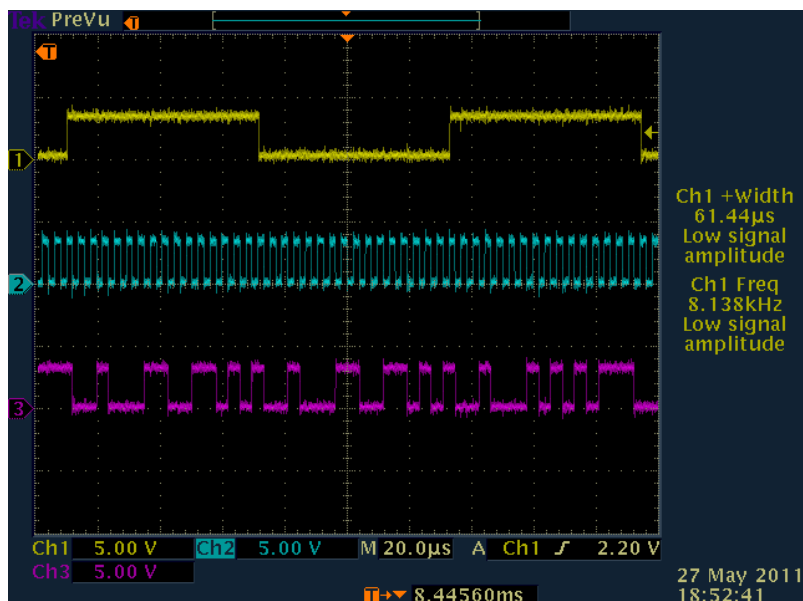
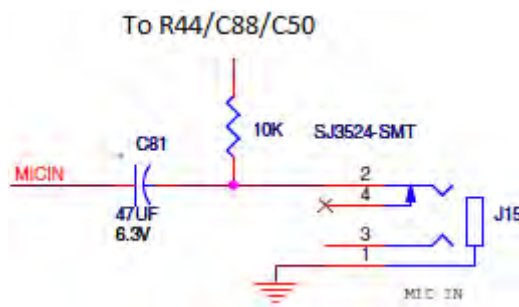


Fig 10. I2S bus format for UDA1380 for transferring 1 mono sample



**Fig 11. Oscilloscope screen of an I2S signal received by the LPC1768. Yellow (I2SRX\_WS), blue (I2SRX\_CLK) and magenta (I2SRX\_SDA)**

Note: On the CodeRed RDB1768 board the microphone is not working properly by default due to a hardware bug, as there is no power supplied to the microphone. This can easily be fixed by connecting a 10 kΩ resistor from the microphone to the analog power supply of the UDA1380. [Fig 12](#) shows the required patch.



**Fig 12. Hardware fix required when connecting an electret microphone to the RDB1768 board**

#### 2.4.4 User Interface

The application example for the Code Red RDB1768 board uses an LCD interface to show a menu, where the user can choose “Record” and “Play” functions by using the on-board joystick. It uses only the DOWN direction to toggle the cursor position; by pressing CENTER the current option is selected.

For the IAR LPC1768-SK the application code is simpler. Two buttons are used to start the “Record” and “Play” functions. The user can use BUTTON 1 for recording a new 6 second voice stream and BUTTON 2 for playing back the recorded voice stream.

This software package also includes a project using Keil Real-View MDK for the Keil MCB1700 board. This board doesn't have a microphone input or a headphone output,

but it contains a speaker that is used by the application to play a sample audio that comes with the software.

### 3. Conclusion

---

We can see in this application note that the LPC175x/6x is suitable for Vocoder applications using the Speex Codec. Even using no optimization methods, this microcontroller can perform real-time Speex encoding/decoding satisfactorily. Users also can implement some Preprocessor functions available by the Speex software library, such as Resampler, Echo Cancellation, etc.

## 4. References

---

- Speex manual, <http://speex.org/docs/>
- Speex API Reference Manual, <http://speex.org/docs/>
- LPC17xx user manual (UM10360), <http://www.nxp.com>

## 5. Legal information

### 5.1 Definitions

**Draft** — The document is a draft version only. The content is still under internal review and subject to formal approval, which may result in modifications or additions. NXP Semiconductors does not give any representations or warranties as to the accuracy or completeness of information included herein and shall have no liability for the consequences of use of such information.

### 5.2 Disclaimers

**Limited warranty and liability** — Information in this document is believed to be accurate and reliable. However, NXP Semiconductors does not give any representations or warranties, expressed or implied, as to the accuracy or completeness of such information and shall have no liability for the consequences of use of such information. NXP Semiconductors takes no responsibility for the content in this document if provided by an information source outside of NXP Semiconductors.

In no event shall NXP Semiconductors be liable for any indirect, incidental, punitive, special or consequential damages (including - without limitation - lost profits, lost savings, business interruption, costs related to the removal or replacement of any products or rework charges) whether or not such damages are based on tort (including negligence), warranty, breach of contract or any other legal theory.

Notwithstanding any damages that customer might incur for any reason whatsoever, NXP Semiconductors' aggregate and cumulative liability towards customer for the products described herein shall be limited in accordance with the Terms and conditions of commercial sale of NXP Semiconductors.

**Right to make changes** — NXP Semiconductors reserves the right to make changes to information published in this document, including without limitation specifications and product descriptions, at any time and without notice. This document supersedes and replaces all information supplied prior to the publication hereof.

**Suitability for use** — NXP Semiconductors products are not designed, authorized or warranted to be suitable for use in life support, life-critical or safety-critical systems or equipment, nor in applications where failure or malfunction of an NXP Semiconductors product can reasonably be expected to result in personal injury, death or severe property or environmental damage. NXP Semiconductors and its suppliers accept no liability for inclusion and/or use of NXP Semiconductors products in such equipment or applications and therefore such inclusion and/or use is at the customer's own risk.

**Applications** — Applications that are described herein for any of these products are for illustrative purposes only. NXP Semiconductors makes no representation or warranty that such applications will be suitable for the specified use without further testing or modification.

Customers are responsible for the design and operation of their applications and products using NXP Semiconductors products, and NXP

Semiconductors accepts no liability for any assistance with applications or customer product design. It is customer's sole responsibility to determine whether the NXP Semiconductors product is suitable and fit for the customer's applications and products planned, as well as for the planned application and use of customer's third party customer(s). Customers should provide appropriate design and operating safeguards to minimize the risks associated with their applications and products.

NXP Semiconductors does not accept any liability related to any default, damage, costs or problem which is based on any weakness or default in the customer's applications or products, or the application or use by customer's third party customer(s). Customer is responsible for doing all necessary testing for the customer's applications and products using NXP Semiconductors products in order to avoid a default of the applications and the products or of the application or use by customer's third party customer(s). NXP does not accept any liability in this respect.

**Export control** — This document as well as the item(s) described herein may be subject to export control regulations. Export might require a prior authorization from competent authorities.

**Evaluation products** — This product is provided on an "as is" and "with all faults" basis for evaluation purposes only. NXP Semiconductors, its affiliates and their suppliers expressly disclaim all warranties, whether express, implied or statutory, including but not limited to the implied warranties of non-infringement, merchantability and fitness for a particular purpose. The entire risk as to the quality, or arising out of the use or performance, of this product remains with customer.

In no event shall NXP Semiconductors, its affiliates or their suppliers be liable to customer for any special, indirect, consequential, punitive or incidental damages (including without limitation damages for loss of business, business interruption, loss of use, loss of data or information, and the like) arising out of the use of or inability to use the product, whether or not based on tort (including negligence), strict liability, breach of contract, breach of warranty or any other theory, even if advised of the possibility of such damages.

Notwithstanding any damages that customer might incur for any reason whatsoever (including without limitation, all damages referenced above and all direct or general damages), the entire liability of NXP Semiconductors, its affiliates and their suppliers and customer's exclusive remedy for all of the foregoing shall be limited to actual damages incurred by customer based on reasonable reliance up to the greater of the amount actually paid by customer for the product or five dollars (US\$5.00). The foregoing limitations, exclusions and disclaimers shall apply to the maximum extent permitted by applicable law, even if any remedy fails of its essential purpose.

### 5.3 Trademarks

Notice: All referenced brands, product names, service names and trademarks are property of their respective owners.



## 6. Contents

---

<b>1.</b>	<b>Introduction .....</b>	<b>3</b>
1.1	Overview .....	3
1.1.1	Speex features .....	3
1.1.2	Applications .....	3
1.1.3	About this document .....	3
1.2	LPC175x/6x features .....	4
1.3	About Code Red's RBD1768 development board .....	4
<b>2.</b>	<b>Application.....</b>	<b>5</b>
2.1	Vocoder overview.....	5
2.2	Memory requirements .....	6
2.3	Speex application implementation.....	6
2.3.1	Codec settings .....	6
2.3.1.1	Sampling rate .....	6
2.3.1.2	Speex Parameters .....	6
2.3.2	Environment features and requirements .....	6
2.3.3	Using libSpeex .....	7
2.4	Application description .....	8
2.4.1	Record process .....	8
2.4.2	Playback process .....	10
2.4.3	Audio input/output for RDB1768 board .....	12
2.4.4	User Interface.....	13
<b>3.</b>	<b>Conclusion.....</b>	<b>14</b>
<b>4.</b>	<b>References .....</b>	<b>15</b>
<b>5.</b>	<b>Legal information .....</b>	<b>16</b>
5.1	Definitions .....	16
5.2	Disclaimers.....	16
5.3	Trademarks.....	16
<b>6.</b>	<b>Contents.....</b>	<b>17</b>

---

Please be aware that important notices concerning this document and the product(s) described herein, have been included in the section 'Legal information'.

---