



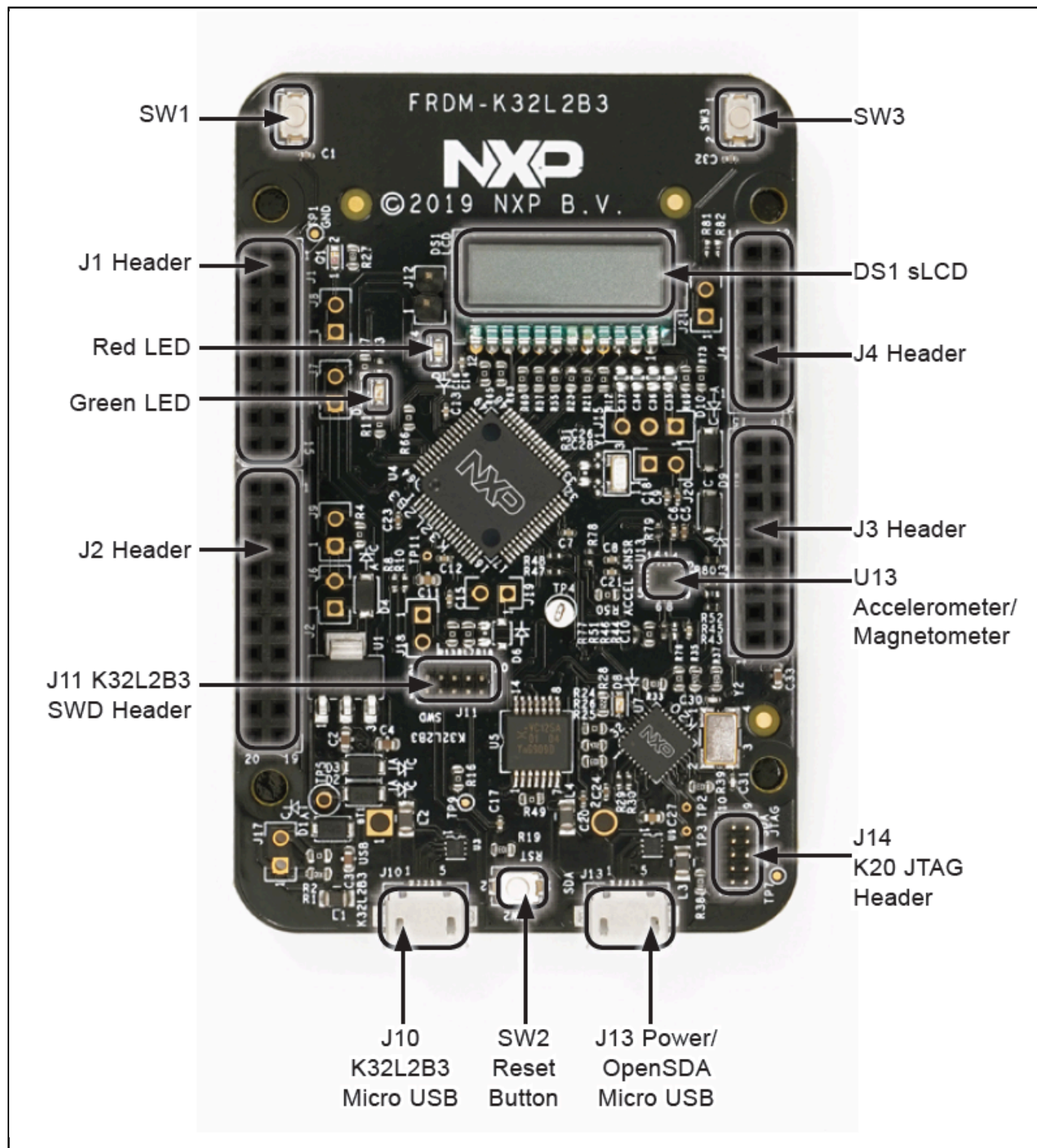
# NXP FRDM Development Platform for K32 L2B MCUs

## FRDM-K32L2B3

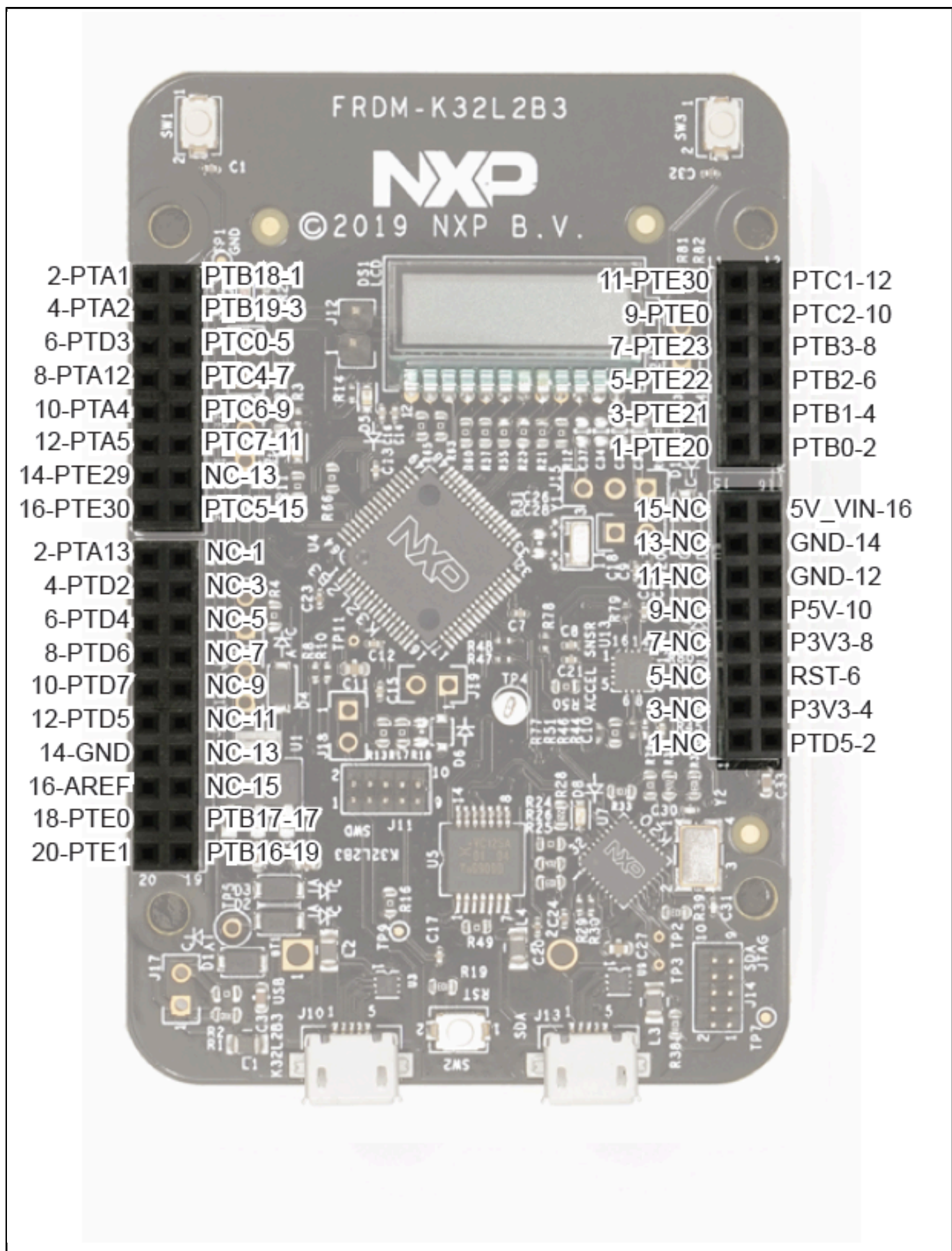
Last Updated: Dec 23, 2025

The FRDM-K32L2B3 FRDM development board provides a platform for evaluation and development of the K32 L2B MCU Family. The board includes onboard debug probe, segment LCD, accelerometer/magnetometer, a full speed USB and easy access to K32 L2B's MCU I/O. The FRDM-K32L2B3 board is fully supported by the MCUXpresso suite of tools, which provides device drivers, middleware and examples to allow rapid development, plus configuration tools and an optional free IDE.

## FRDM-K32L2B CALLOUT Block Diagram



## FRDM-K32L2B PINOUT Block Diagram



**Note:** The information on this document is subject to change without notice.

---

**[www.nxp.com](http://www.nxp.com)**

NXP and the NXP logo are trademarks of NXP B.V. All other product or service names are the property of their respective owners. The related technology may be protected by any or all of patents, copyrights, designs and trade secrets. All rights reserved. © 2025 NXP B.V.