

AN14466

Antenna Auto Detection

Rev. 2.0 — 16 December 2024

Application note

Document information

Information	Content
Keywords	Antenna, Wi-Fi, Bluetooth LE, 802.15.4, diversity, single antenna, dual antenna, front-end (FE), radio performance
Abstract	Describes the antenna auto detection feature.



1 Introduction

Antenna auto detection is a feature for RW61x designs with three antenna diversity to automatically determine which antenna is best suited for optimal performance. The feature automatically selects the primary antenna and secondary antenna. SDK 2.15.0 and greater supports antenna auto detection.

Antenna auto detection includes three modes:

- Normal detect mode
- Quick detect mode
- PCB detect mode

Note: *The RW61x reference design board does not support the antenna auto detection feature by default.*

1.1 Supported devices

This document applies to the following wireless devices:

- RW610 [\[5\]](#)
- RW612 [\[6\]](#)

Note: *The RW61x design must support antenna diversity. Contact your NXP representative to discuss if your hardware design supports antenna diversity.*

2 Front-end module (FEM) settings

NXP SDK release supports two FEM settings. The `design_type` parameter in the calibration data file is used to set the FEM. For more information on calibration data, refer to [\[1\]](#).

To support antenna auto detection, the parameter `Ref_Design_Type` must be set to `0xA2` or `0xA3`.

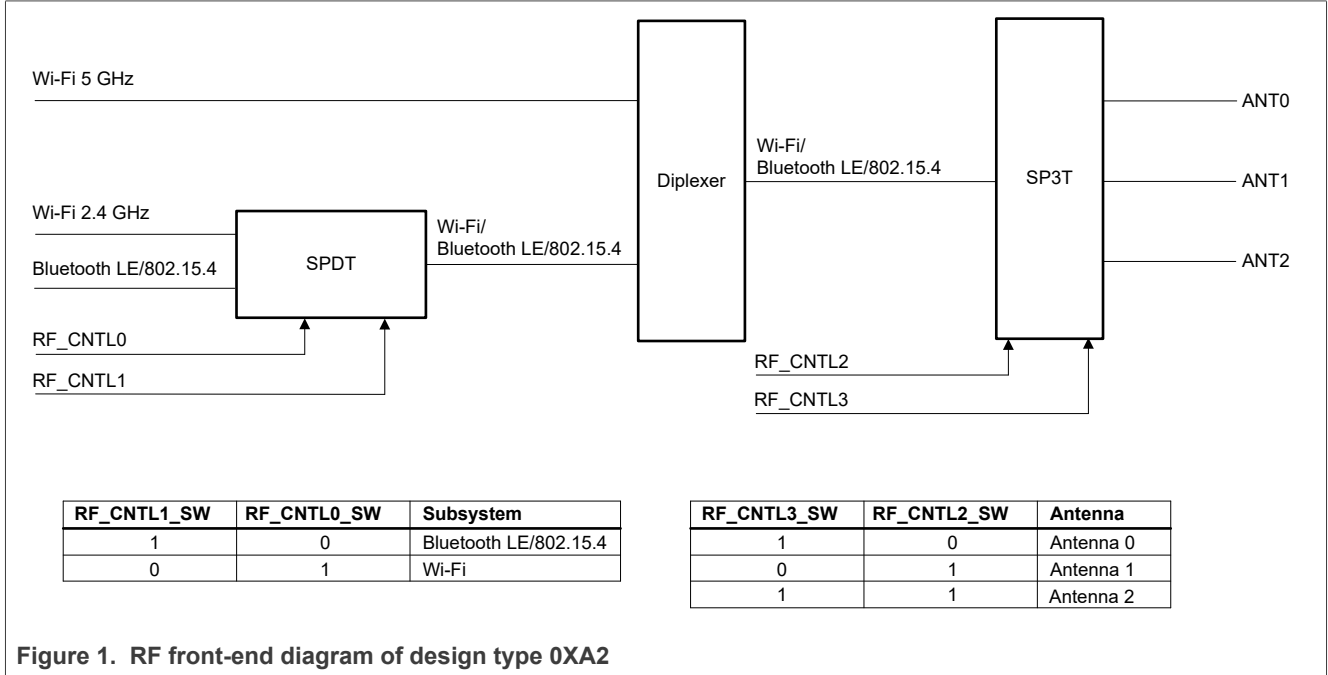
Example of calibration data file content:

```
[StructureInfo]
STRUCTURE_REV=0x0F
[Main_Table]
Ref_Design_Type=0xA3
Device_ID=0x00
SPI_Size=0x40
Ant_TX=0xFF
Ant_RX=0xFF
Soc_OR_Rev=0x00
TMP_At_Cal=0x0022
RFXTAL=0x72
Region_Code=0x00
MISC_Flag=0x00
TEST_VERSION=0x42679
MFG_VERSION=0x200003F
DLL_VERSION=0x1000012
...
```

2.1 Design type 0xA2

In design type 0xA2, RF_CNTL[0:3] signals are used to configure the RF switches in the hardware design.

The RF_CNTL[0:3] signals must be set as shown in [Figure 1](#).



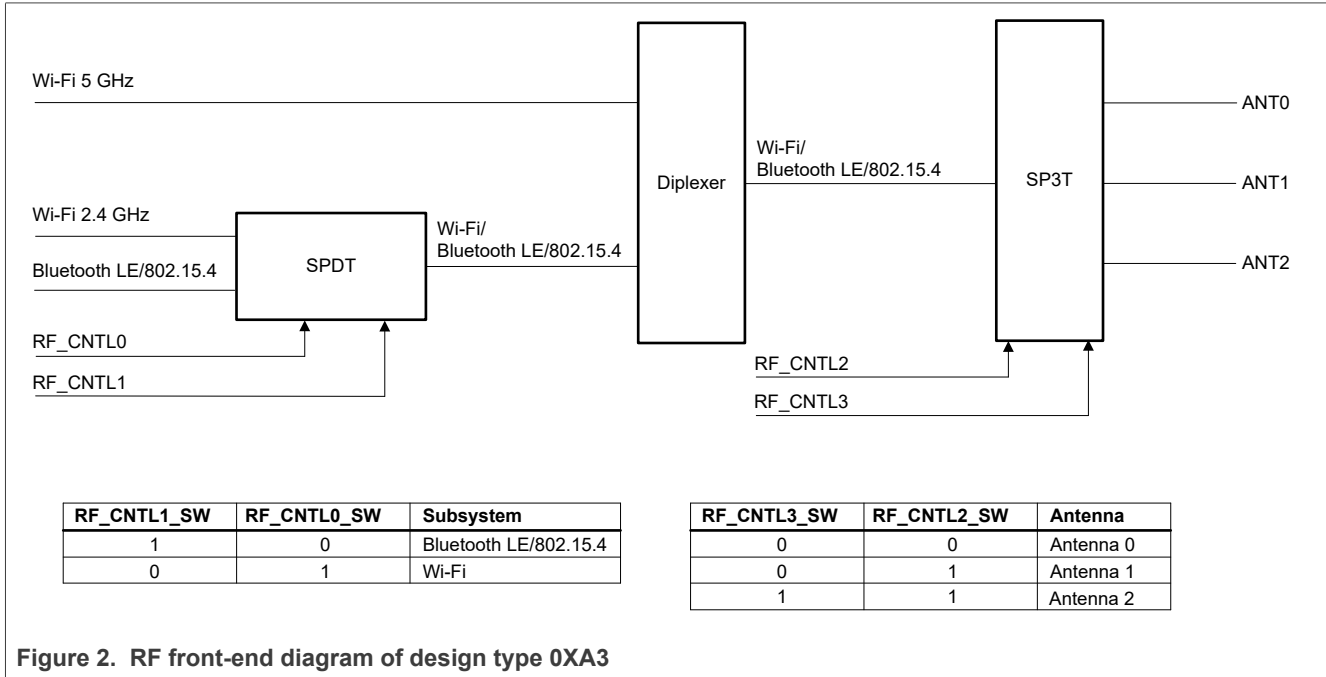
[Table 1](#) shows the recommended FEM setting of design type 0xA2

Table 1. Recommended FEM setting of design type 0xA2

Selected antenna	Wi-Fi	Bluetooth LE/802.15.4
Antenna 0	0x09	0x0A
Antenna 1	0x05	0x06
Antenna 2	0x0D	0x0E

2.2 Design type 0xA3

In design type 0xA3, RF_CNTL[0:3] signals are used to configure the RF switches in the hardware design. The RF_CNTL[0:3] signals must be set as shown in [Figure 2](#).



[Table 2](#) shows the recommended FEM setting of design type 0xA3

Table 2. Recommended FEM setting of design type 0xA3

Selected antenna	Wi-Fi	Bluetooth LE/802.15.4
Antenna 0	0x01	0x02
Antenna 1	0x05	0x06
Antenna 2	0x0D	0x0E

3 Feature modes

This section describes the three antenna auto detection modes.

3.1 Normal detect mode

In normal detect mode, the RW61x board scans for access points (AP) antenna by antenna, across the channel list. The command `wlan-detect-ant` is used to set the channel list ([Section 4](#)).

Each antenna scans and lists the names of the five APs with the RSSI value closest to the antenna RSSI value. The names of the access points are compared to find a common AP that all the antennas can scan.

The RSSI value of the common AP on each antenna is compared to find the best two antennas. If there is no common AP, the average RSSI value of the top five APs on each antenna is compared to find the best two antennas.

[Figure 3](#) illustrates the normal detect mode.

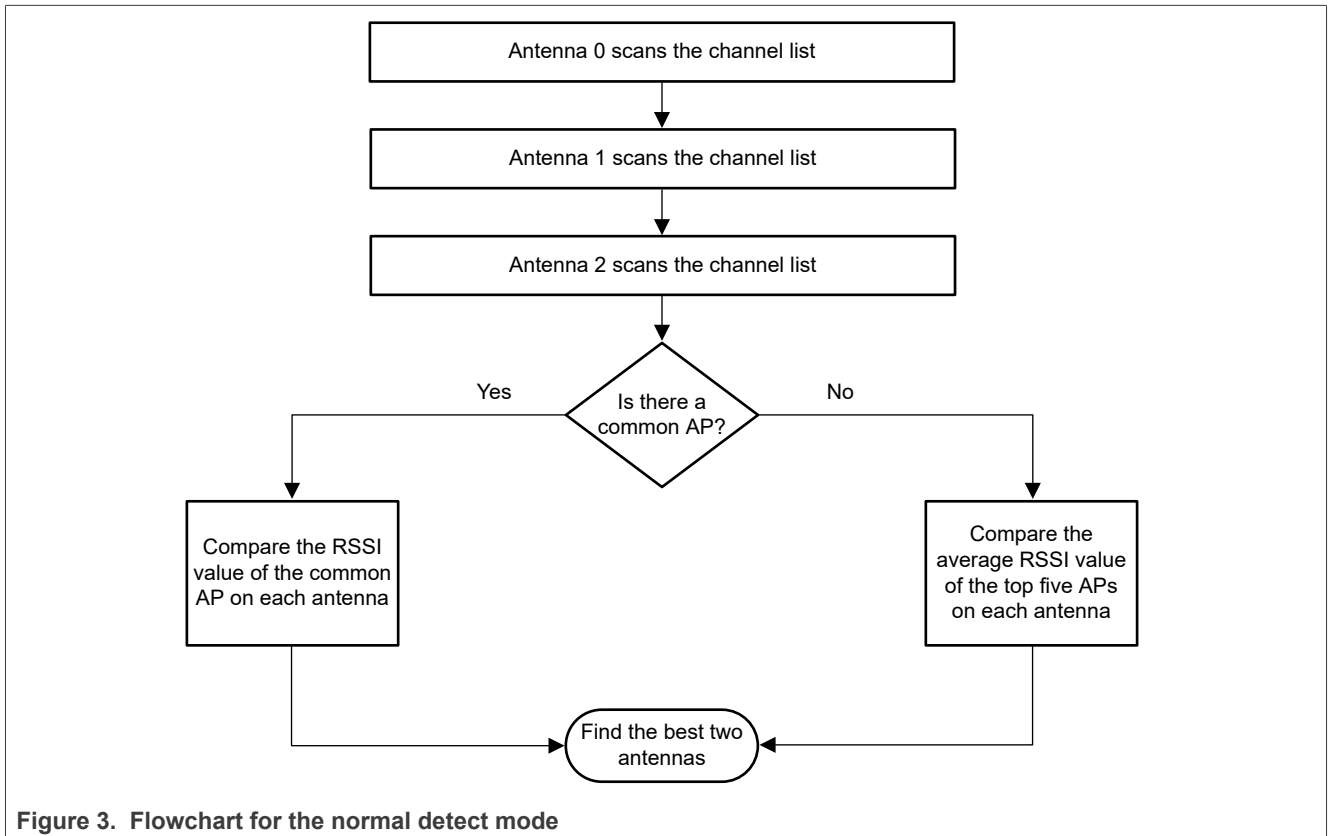


Figure 3. Flowchart for the normal detect mode

Note: The common AP is the AP that all three antennas can scan.

3.2 Quick detect mode

In quick detect mode, the RW61x board scans for access points antenna by antenna, for the first channel in the list. The command `wlan-detect-ant` is used to set the channel list ([Section 4](#)).

Each antenna scans and lists the top five AP names. The AP names are compared to find a common AP.

The RSSI value of the common AP on each antenna is compared to find the best two antennas. If there is no common AP, the average RSSI value of the top five APs on each antenna is compared to find the best two antennas.

If the best two antennas are not found, the RW61x board scans for access points for the second channel.

[Figure 4](#) illustrates the quick detect mode (the channel number (n) increments every time at the start of every new flow).

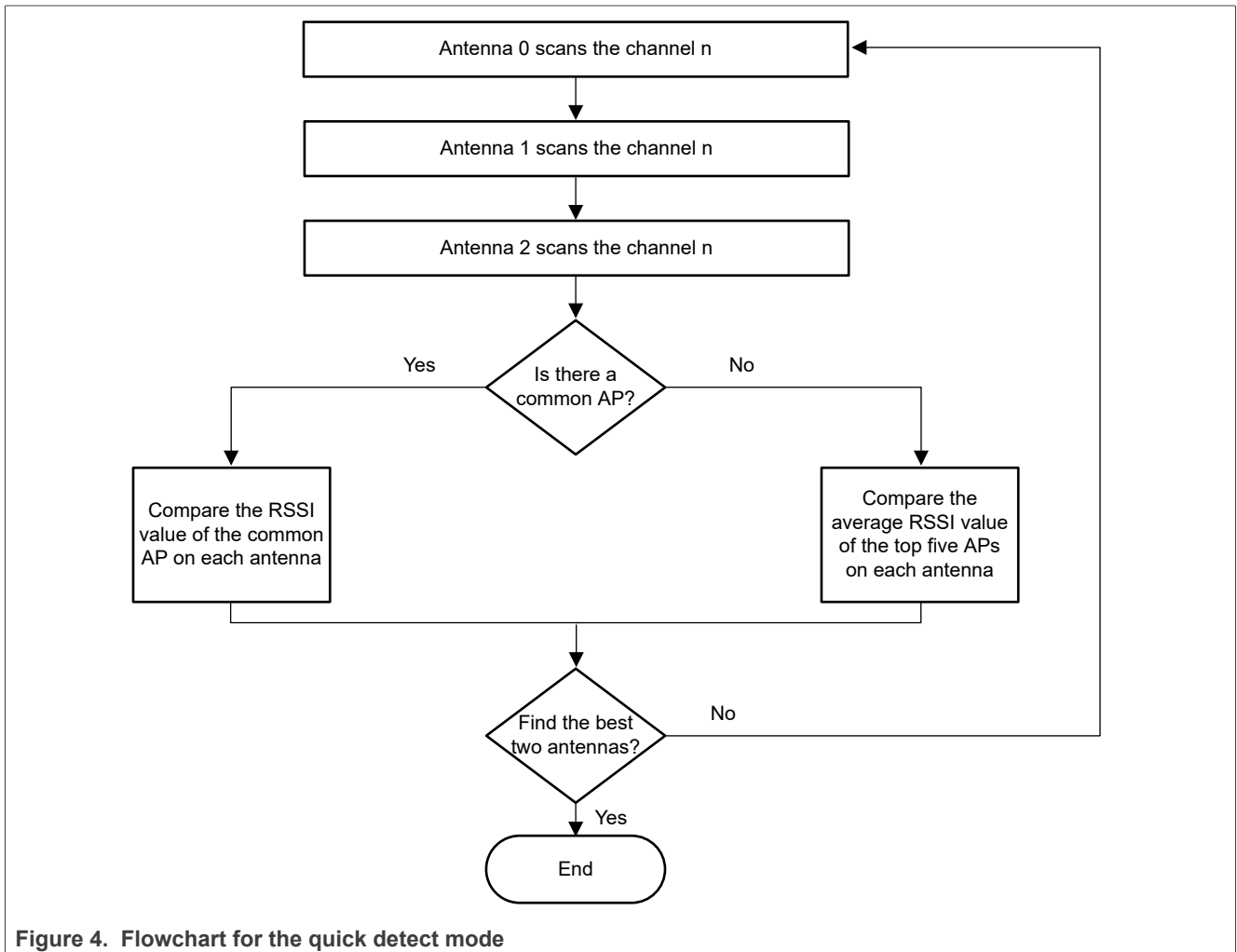


Figure 4. Flowchart for the quick detect mode

3.3 PCB detect mode

In PCB detect mode, the first antenna (Antenna0) on RW61x board scans for access points across the full channel list and lists the top two APs. The other two antennas scan for access points across the full channel list. The average RSSI value of the top two APs for the each of the three antennas is compared to find the best two antennas.

Note: *The first antenna (Antenna0) must be connected.*

[Figure 5](#) illustrates the PCB detect mode.

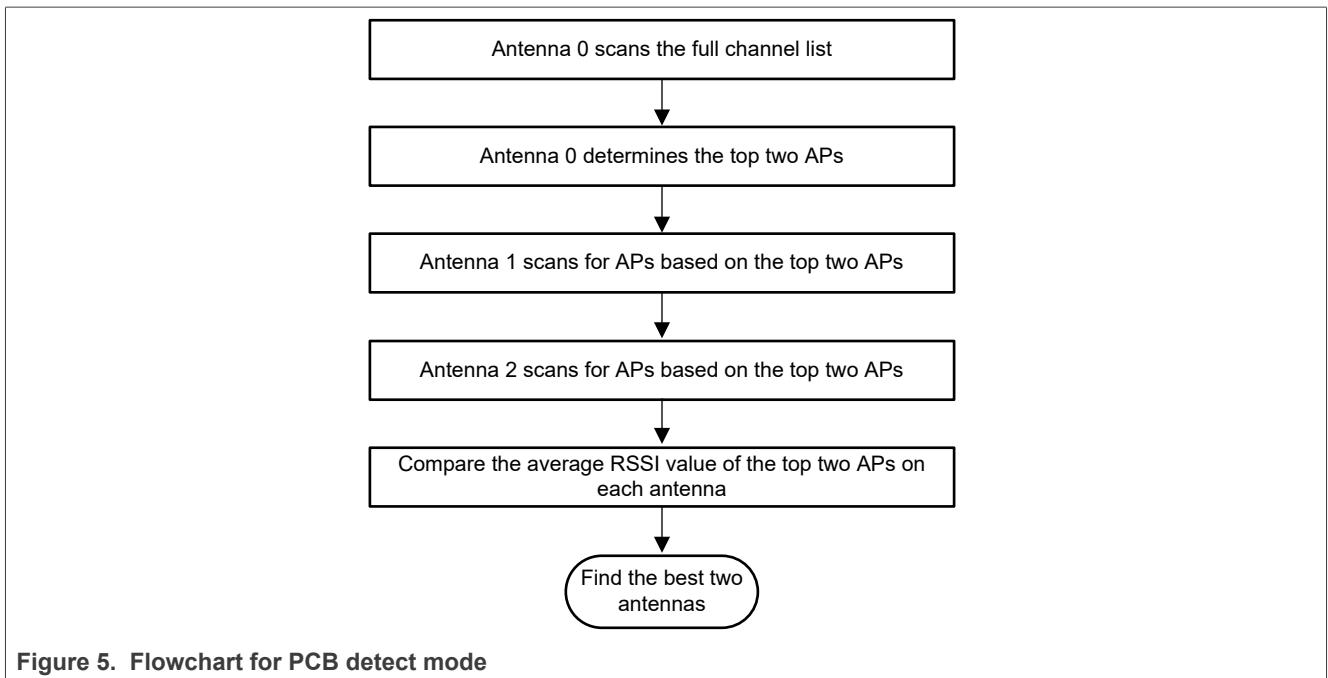


Figure 5. Flowchart for PCB detect mode

3.4 Comparison of the feature modes

[Table 3](#) compares the antenna auto configuration modes.

Table 3. Comparison of the antenna auto configuration modes

Mode	Advantage	Disadvantage
Normal detect mode	High accuracy	Time consuming
Quick detect mode	High time-efficiency	Low accuracy
PCB detect mode	Average time-efficiency Average accuracy	The first antenna is always ON. No channel hopping for the top two APs

Note:

- *Antenna auto detection time depends on the configured scan period.*
- *When the channel list is large, the quick detect mode is faster.*
- *When the device is in an open environment, the scan time of PCB detect mode is consistent.*
- *When the device is placed in a corner, the normal detect mode is more accurate.*

4 Feature configuration

The command `wlan-detect-ant` is used to enable the antenna auto detection feature. Both `wifi_cli` and `wpa_supplicant` applications in the SDK package support the feature.

Command syntax:

```
wlan-detect-ant <detect_mode> <ant_port_count> channel <channel>
```

Table 4. Command parameters

Parameter	Description
<code>detect_mode</code>	Antenna detection mode. 0 = normal detect mode 1 = quick detect mode 2 = PCB detect mode
<code>ant_port_count</code>	Total count of antenna ports Range = 0 to 3
<code>channel</code>	Defines the channel list to scan. More than one channel can be specified with a separating comma (",") If channel number is specified, all the channels are scanned.

Note: For the list of supported 2.4 GHz and 5 GHz Wi-Fi channels, refer to [\[2\]](#) and [\[3\]](#).

5 Examples

This section shows how to configure the antenna auto detection modes. For the three examples, the RW61x board is flashed with the *wifi-cli* application. For more information, refer to [\[4\]](#).

5.1 Example for normal detect mode

The example configures normal detect mode on channels 1 and 6.

Command example:

```
wlan-detect-ant 0 3 channel 1,6
```

Example of command output:

```
172197: Start to detect ant
Start to evaluate antenna 1
Scan on 2 channels scheduled...
11 networks found
List top 5 best scanned AP's info:
3C:51:0E:6F:F3:60 "NXP"
    channel: 1
    rssi: -52 dBm
...
5 valid scan entry found
avg_rssi: -56 dBm
Start to evaluate antenna 2
Scan on 2 channels scheduled...
2 networks found
List top 5 best scanned AP's info:
3C:51:0E:6F:F3:60 "NXP"
    channel: 1
    rssi: -90 dBm
...
2 valid scan entry found
avg_rssi: -86 dBm
Start to evaluate antenna 3
Scan on 2 channels scheduled...
3 networks found
List top 5 best scanned AP's info:
3C:51:0E:6F:F3:61 "NXPOPEN"
    channel: 1
    rssi: -88 dBm
...
Find one common device
List the info on every antenna for this common device
Antenna 1:
60:A4:4C:A1:50:50 "asus-2g-ch-1"
    rssi[0]: -48 dBm
Antenna 2:
60:A4:4C:A1:50:50 "asus-2g-ch-1"
    rssi[1]: -83 dBm
Antenna 3:
60:A4:4C:A1:50:50 "asus-2g-ch-1"
    rssi[2]: -86 dBm
Currently, best antenna is 1, next best antenna is 2
Enable Antenna diversity with evaluate mode 0 successful
172676: End of detect ant
It cost 479ms to detect ant
```

5.2 Example for quick detect mode

This example configures quick detect mode on channel 1.

Command example:

```
wlan-detect-ant 1 3 channel 1
```

Example of command output:

```
172197: Start to detect ant
Start to evaluate antenna 1
Scan on channel1 scheduled...
11 networks found
List top 5 best scanned AP's info:
3C:51:0E:6F:F3:60 "NXP"
    channel: 1
    rssi: -52 dBm
...
5 valid scan entry found
avg_rssi: -56 dBm
Start to evaluate antenna 2
Scan on channel1 scheduled...
2 networks found
List top 5 best scanned AP's info:
3C:51:0E:6F:F3:60 "NXP"
    channel: 1
    rssi: -90 dBm
...
2 valid scan entry found
avg_rssi: -86 dBm
Start to evaluate antenna 3
Scan on channel1 scheduled...
3 networks found
List top 5 best scanned AP's info:
3C:51:0E:6F:F3:61 "NXPOPEN"
    channel: 1
    rssi: -88 dBm
...
Find one common device
List the info on every antenna for this common device
Antenna 1:
60:A4:4C:A1:50:50 "asus-2g-ch-1"
    rssi[0]: -48 dBm
Antenna 2:
60:A4:4C:A1:50:50 "asus-2g-ch-1"
    rssi[1]: -83 dBm
Antenna 3:
60:A4:4C:A1:50:50 "asus-2g-ch-1"
    rssi[2]: -86 dBm
Currently, best antenna is 1, next best antenna is 2
Enable Antenna diversity with evaluate mode 1 successful
172676: End of detect ant
It cost 479ms to detect ant
```

5.3 Example for PCB detect mode

This example configures PCB detect mode.

Command example:

```
wlan-detect-ant 2 3
```

Example command output:

```
368943: Start to detect ant
Start to evaluate antenna 1
Scan on full channel scheduled...
26 networks found
List top 2 best scanned AP's info:
04:42:1A:17:22:60 "Asus_nxp"
    channel: 10
    rssi: -32 dBm
...
Start to evaluate antenna 2
Scan on channel 10 and for bssid 04:42:1A:17:22:60 scheduled...
1 network found
04:42:1A:17:22:60 "Asus_nxp"
    channel: 10
    rssi: -65 dBm
Scan on channel 6 and for bssid 6C:B0:CE:7D:44:28 scheduled...
1 network found
6C:B0:CE:7D:44:28 "R6220-ch11"
    channel: 6
    rssi: -83 dBm
Start to evaluate antenna 3
Scan on channel 10 and for bssid 04:42:1A:17:22:60 scheduled...
1 network found
04:42:1A:17:22:60 "Asus_nxp"
    channel: 10
    rssi: -66 dBm
Scan on channel 6 and for bssid 6C:B0:CE:7D:44:28 scheduled...
1 network found
6C:B0:CE:7D:44:28 "R6220-ch11"
    channel: 6
    rssi: -78 dBm
evaluate ant by specific device
Evaluate result:
      avg_rssi
Antenna 1      -36 dBm
Antenna 2      -74 dBm
Antenna 3      -72 dBm
Currently, best antenna is 1, next best antenna is 3
Enable Antenna diversity with evaluate mode 2 successful
370968: End of detect ant
It cost 2025ms to detect ant
```

6 References

- [1] Application note – AN13639: Calibration Structure for RW61x
- [2] Data sheet – RW610: Wireless MCU with Integrated 1x1 Wi-Fi 6, Bluetooth Low Energy ([link](#))
- [3] Data sheet – RW612: Wireless MCU with Integrated 1x1 Wi-Fi 6, Bluetooth Low Energy / 802.15.4 ([link](#))
- [4] User manual – UM11799: NXP Wi-Fi and Bluetooth Demo Applications for RW61x ([link](#))
- [5] Webpage – RW610: Wireless MCU with Integrated Radio: 1x1 Wi-Fi® 6 + Bluetooth® Low Energy Radios ([link](#))
- [6] Webpage – RW612: Wireless MCU with Integrated Tri-radio: 1x1 Wi-Fi® 6 + Bluetooth® Low Energy / 802.15.4 ([link](#))

7 Abbreviations

Table 5. Abbreviations

Acronym	Description
Ant	Antenna
AP	Access point
FE	Front end
FEM	Front end module
PCB	Printed circuit board
RSSI	Received signal strength indicator

8 Revision history

Table 6. Revision history

Document ID	Release date	Description
AN14466 v.2.0	16 December 2024	<ul style="list-style-type: none">• Section 2.1 "Design type 0xA2": replaced the value of RF_CNTL3_SW for Antenna 0 in the figure.• Section 2.2 "Design type 0xA3": replaced the value of RF_CNTL3_SW for Antenna 0 in the figure.
AN14466 v.1.0	2 December 2024	<ul style="list-style-type: none">• Initial version

9 Note about the source code in the document

The example code shown in this document has the following copyright and BSD-3-Clause license:

Copyright 2024 NXP Redistribution and use in source and binary forms, with or without modification, are permitted provided that the following conditions are met:

1. Redistributions of source code must retain the above copyright notice, this list of conditions and the following disclaimer.
2. Redistributions in binary form must reproduce the above copyright notice, this list of conditions and the following disclaimer in the documentation and/or other materials must be provided with the distribution.
3. Neither the name of the copyright holder nor the names of its contributors may be used to endorse or promote products derived from this software without specific prior written permission.

THIS SOFTWARE IS PROVIDED BY THE COPYRIGHT HOLDERS AND CONTRIBUTORS "AS IS" AND ANY EXPRESS OR IMPLIED WARRANTIES, INCLUDING, BUT NOT LIMITED TO, THE IMPLIED WARRANTIES OF MERCHANTABILITY AND FITNESS FOR A PARTICULAR PURPOSE ARE DISCLAIMED. IN NO EVENT SHALL THE COPYRIGHT HOLDER OR CONTRIBUTORS BE LIABLE FOR ANY DIRECT, INDIRECT, INCIDENTAL, SPECIAL, EXEMPLARY, OR CONSEQUENTIAL DAMAGES (INCLUDING, BUT NOT LIMITED TO, PROCUREMENT OF SUBSTITUTE GOODS OR SERVICES; LOSS OF USE, DATA, OR PROFITS; OR BUSINESS INTERRUPTION) HOWEVER CAUSED AND ON ANY THEORY OF LIABILITY, WHETHER IN CONTRACT, STRICT LIABILITY, OR TORT (INCLUDING NEGLIGENCE OR OTHERWISE) ARISING IN ANY WAY OUT OF THE USE OF THIS SOFTWARE, EVEN IF ADVISED OF THE POSSIBILITY OF SUCH DAMAGE.

Legal information

Definitions

Draft — A draft status on a document indicates that the content is still under internal review and subject to formal approval, which may result in modifications or additions. NXP Semiconductors does not give any representations or warranties as to the accuracy or completeness of information included in a draft version of a document and shall have no liability for the consequences of use of such information.

Disclaimers

Limited warranty and liability — Information in this document is believed to be accurate and reliable. However, NXP Semiconductors does not give any representations or warranties, expressed or implied, as to the accuracy or completeness of such information and shall have no liability for the consequences of use of such information. NXP Semiconductors takes no responsibility for the content in this document if provided by an information source outside of NXP Semiconductors.

In no event shall NXP Semiconductors be liable for any indirect, incidental, punitive, special or consequential damages (including - without limitation - lost profits, lost savings, business interruption, costs related to the removal or replacement of any products or rework charges) whether or not such damages are based on tort (including negligence), warranty, breach of contract or any other legal theory.

Notwithstanding any damages that customer might incur for any reason whatsoever, NXP Semiconductors' aggregate and cumulative liability towards customer for the products described herein shall be limited in accordance with the Terms and conditions of commercial sale of NXP Semiconductors.

Right to make changes — NXP Semiconductors reserves the right to make changes to information published in this document, including without limitation specifications and product descriptions, at any time and without notice. This document supersedes and replaces all information supplied prior to the publication hereof.

Suitability for use — NXP Semiconductors products are not designed, authorized or warranted to be suitable for use in life support, life-critical or safety-critical systems or equipment, nor in applications where failure or malfunction of an NXP Semiconductors product can reasonably be expected to result in personal injury, death or severe property or environmental damage. NXP Semiconductors and its suppliers accept no liability for inclusion and/or use of NXP Semiconductors products in such equipment or applications and therefore such inclusion and/or use is at the customer's own risk.

Applications — Applications that are described herein for any of these products are for illustrative purposes only. NXP Semiconductors makes no representation or warranty that such applications will be suitable for the specified use without further testing or modification.

Customers are responsible for the design and operation of their applications and products using NXP Semiconductors products, and NXP Semiconductors accepts no liability for any assistance with applications or customer product design. It is customer's sole responsibility to determine whether the NXP Semiconductors product is suitable and fit for the customer's applications and products planned, as well as for the planned application and use of customer's third party customer(s). Customers should provide appropriate design and operating safeguards to minimize the risks associated with their applications and products.

NXP Semiconductors does not accept any liability related to any default, damage, costs or problem which is based on any weakness or default in the customer's applications or products, or the application or use by customer's third party customer(s). Customer is responsible for doing all necessary testing for the customer's applications and products using NXP Semiconductors products in order to avoid a default of the applications and the products or of the application or use by customer's third party customer(s). NXP does not accept any liability in this respect.

Terms and conditions of commercial sale — NXP Semiconductors products are sold subject to the general terms and conditions of commercial sale, as published at <https://www.nxp.com/profile/terms>, unless otherwise agreed in a valid written individual agreement. In case an individual agreement is concluded only the terms and conditions of the respective agreement shall apply. NXP Semiconductors hereby expressly objects to applying the customer's general terms and conditions with regard to the purchase of NXP Semiconductors products by customer.

Export control — This document as well as the item(s) described herein may be subject to export control regulations. Export might require a prior authorization from competent authorities.

Suitability for use in non-automotive qualified products — Unless this document expressly states that this specific NXP Semiconductors product is automotive qualified, the product is not suitable for automotive use. It is neither qualified nor tested in accordance with automotive testing or application requirements. NXP Semiconductors accepts no liability for inclusion and/or use of non-automotive qualified products in automotive equipment or applications.

In the event that customer uses the product for design-in and use in automotive applications to automotive specifications and standards, customer (a) shall use the product without NXP Semiconductors' warranty of the product for such automotive applications, use and specifications, and (b) whenever customer uses the product for automotive applications beyond NXP Semiconductors' specifications such use shall be solely at customer's own risk, and (c) customer fully indemnifies NXP Semiconductors for any liability, damages or failed product claims resulting from customer design and use of the product for automotive applications beyond NXP Semiconductors' standard warranty and NXP Semiconductors' product specifications.

HTML publications — An HTML version, if available, of this document is provided as a courtesy. Definitive information is contained in the applicable document in PDF format. If there is a discrepancy between the HTML document and the PDF document, the PDF document has priority.

Translations — A non-English (translated) version of a document, including the legal information in that document, is for reference only. The English version shall prevail in case of any discrepancy between the translated and English versions.

Security — Customer understands that all NXP products may be subject to unidentified vulnerabilities or may support established security standards or specifications with known limitations. Customer is responsible for the design and operation of its applications and products throughout their lifecycles to reduce the effect of these vulnerabilities on customer's applications and products. Customer's responsibility also extends to other open and/or proprietary technologies supported by NXP products for use in customer's applications. NXP accepts no liability for any vulnerability. Customer should regularly check security updates from NXP and follow up appropriately. Customer shall select products with security features that best meet rules, regulations, and standards of the intended application and make the ultimate design decisions regarding its products and is solely responsible for compliance with all legal, regulatory, and security related requirements concerning its products, regardless of any information or support that may be provided by NXP.

NXP has a Product Security Incident Response Team (PSIRT) (reachable at PSIRT@nxp.com) that manages the investigation, reporting, and solution release to security vulnerabilities of NXP products.

NXP B.V. — NXP B.V. is not an operating company and it does not distribute or sell products.

Trademarks

Notice: All referenced brands, product names, service names, and trademarks are the property of their respective owners.

NXP — wordmark and logo are trademarks of NXP B.V.

Tables

Tab. 1.	Recommended FEM setting of design type 0xA2	4	Tab. 3.	Comparison of the antenna auto configuration modes	9
Tab. 2.	Recommended FEM setting of design type 0xA3	5	Tab. 4.	Command parameters	10
			Tab. 5.	Abbreviations	15
			Tab. 6.	Revision history	16

Figures

Fig. 1. RF front-end diagram of design type 0XA2 4

Fig. 2. RF front-end diagram of design type 0XA3 5

Fig. 3. Flowchart for the normal detect mode6

Fig. 4. Flowchart for the quick detect mode 7

Fig. 5. Flowchart for PCB detect mode 8

Contents

1	Introduction	2
1.1	Supported devices	2
2	Front-end module (FEM) settings	3
2.1	Design type 0xA2	4
2.2	Design type 0xA3	5
3	Feature modes	6
3.1	Normal detect mode	6
3.2	Quick detect mode	7
3.3	PCB detect mode	8
3.4	Comparison of the feature modes	9
4	Feature configuration	10
5	Examples	11
5.1	Example for normal detect mode	11
5.2	Example for quick detect mode	12
5.3	Example for PCB detect mode	13
6	References	14
7	Abbreviations	15
8	Revision history	16
9	Note about the source code in the document	17
	Legal information	18

Please be aware that important notices concerning this document and the product(s) described herein, have been included in section 'Legal information'.
