

Applications Information

Low Power on the SCM68000 (EC000 Core)

The SCM68000 (EC000 core) has been redesigned to provide fully static and low power operation. This document describes the recommended method for placing the SCM68000 into a low-power mode to reduce the power consumption to its quiescent value¹ while maintaining the internal state of the processor. The low-power mode described below will be routinely tested as part of the SCM68000 test vectors provided by Freescale.

NOTE

The terms *assertion* and *negation* are used in this document to avoid confusion when describing a mixture of “active-low” and “active-high” signals. The term *assert* or *assertion* is used to indicate that a signal is active or true, independently of whether that level is represented by a high or low voltage. The term *negate* or *negation* is used to indicate that a signal is inactive or false. The names of all “active-low” signals end with the letter *B*.

To successfully enter the low-power mode, the SCM68000 must be in the supervisor mode. A recommended method for entering the low-power mode is by using the TRAP instruction which causes the processor to begin exception processing, thus entering the supervisor mode. The following steps during the trap routine should be accomplished by external circuitry:

- 1.) Externally detect a write to the low-power address. This address should be chosen by the user and can be any address in the 4 Gbyte addressing range of the SCM68000. A write to the low-power address can be detected by polling A31–A0, RWB, and FC2–FC0. When the low-power address is detected, RWB is a logic low, and the function codes have a five (101) on their output, then the processor is writing to the low-power address in supervisor mode and user-designed circuitry should assert the ADDRESS_MATCH signal shown in Figure 1 and Figure 2.

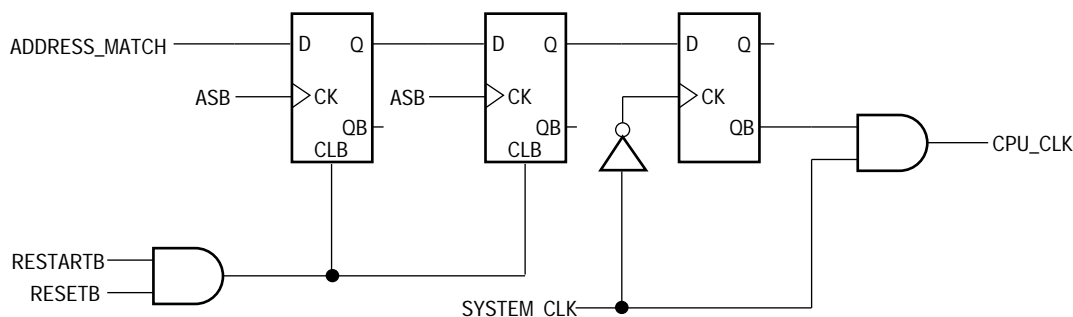


Figure 1. Low-Power Circuitry for 16-bit data bus

¹The preliminary specification for the SCM68000’s current drain while in the low-power mode is I_{dd} < 10µA.

This document contains preliminary information. Freescale reserves the right to change the information in this document without notice.

Freescale Semiconductor, Inc.

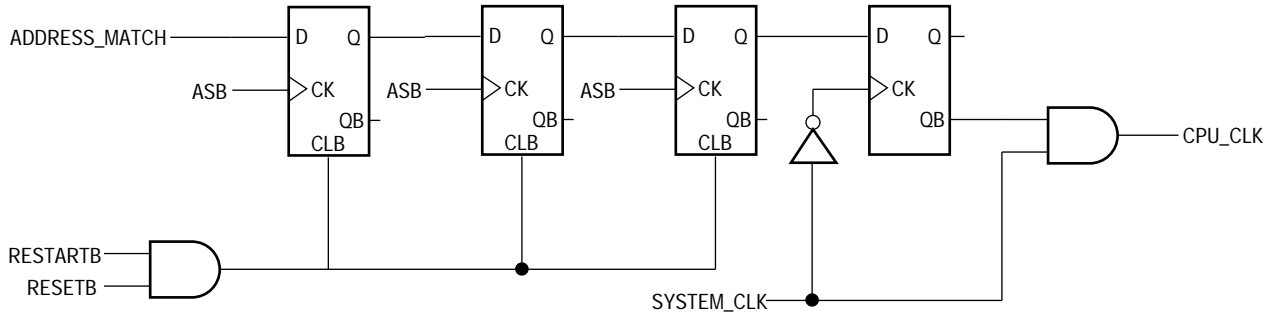


Figure 2. Low-Power Circuitry for 8-bit data bus

2.) Execute the STOP instruction. The external circuitry shown in Figure 1 and Figure 2 will count the number of bus cycles starting with the write to the low-power address and will stop the processor's clock on the first falling edge of the system clock after the bus cycle that reads the immediate data of the STOP instruction. Figure 2 has one more flip-flop than Figure 1 because the SCM68000 in 8-bit mode requires two bus cycles to fetch the immediate data of the STOP instruction. After the processor's clock is disabled it is often desirable to disable the clock to other sections of the user's circuit. This can be done, but care must be taken to ensure that runt clocks and spurious glitches are not presented to the SCM68000. A timing diagram is shown in Figure 3.

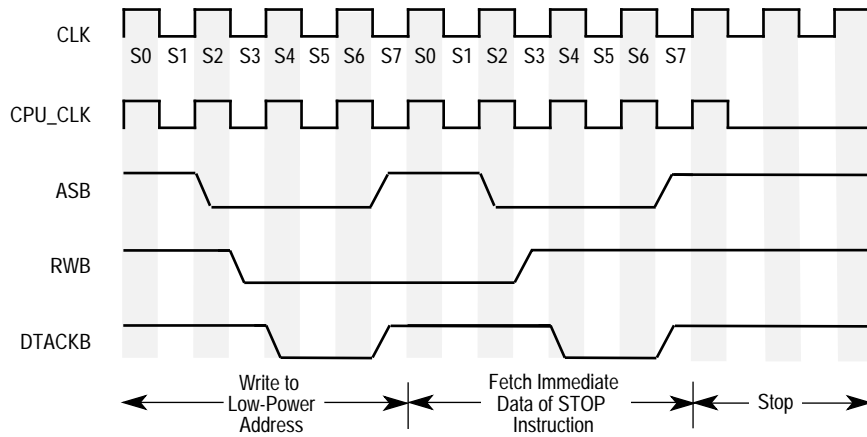


Figure 3. Clock Stop Timing for 16-bit Data Bus

NOTE

While the SCM68000 is in the low-power mode, all inputs must be driven to VDD or VSS, or have a pull-up or pull-down resistor.

3.) This step is optional depending on whether the user's applications require the three-stateable signals of the SCM68000 to be put into a high-impedance state. To put the SCM68000 into a three-state condition, the proper method for arbitrating the bus as described in **3.2 Bus Arbitration** in the *EC000 Core Processor (SCM68000) User's Manual* should be completed during the fetch of the status register data for the STOP instruction. A timing diagram with the bus arbitration sequence is shown in Figure 4.

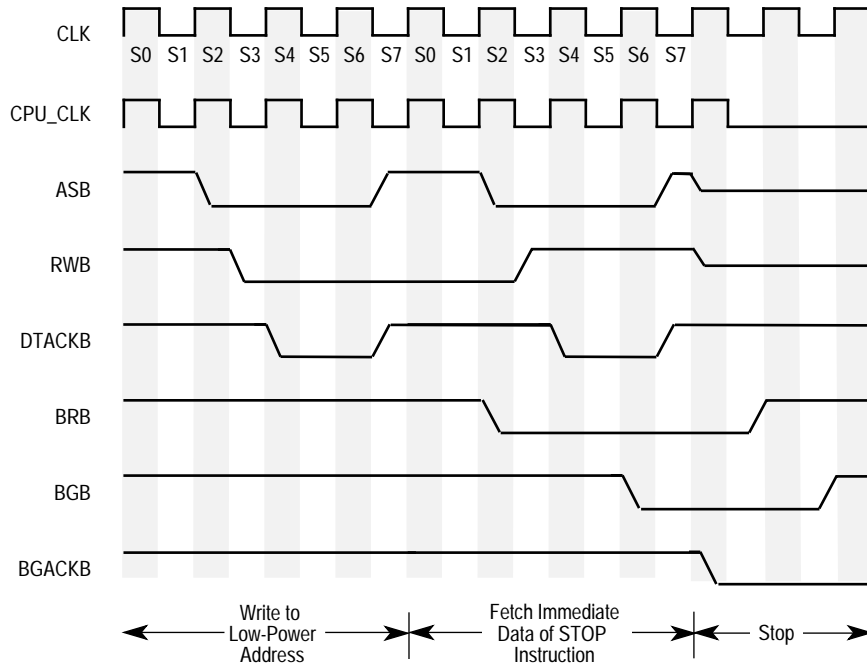


Figure 4. Clock Stop Timing with Bus Arbitration for 16-bit Data Bus

After the previous steps are completed, the SCM68000 will remain in the low-power mode until the appropriate interrupt is recognized. External logic will also have to poll IPLB2–IPLB0 to detect the proper interrupt. When the correct interrupt level is received, the following steps will bring the processor out of the low-power mode:

- 1.) Restart the system clock if it was stopped.
- 2.) Wait for the system clock to become stable.
- 3.) Assert the RESTARTB signal. This will cause the processor's clock to start on the next falling edge of the system clock. Figure 5 shows the timing for bringing the processor out of the low power mode. Both the RESTARTB and RESETB signals are subject to the asynchronous setup time as specified in **Section 7 Electrical Characteristics** in the *EC000 Core Processor (SCM68000) User's Manual*.

WARNING

The system clock must be stable before the RESTARTB signal is asserted to prevent glitches in the clock. An unstable clock may cause unpredictable results in the SCM68000.

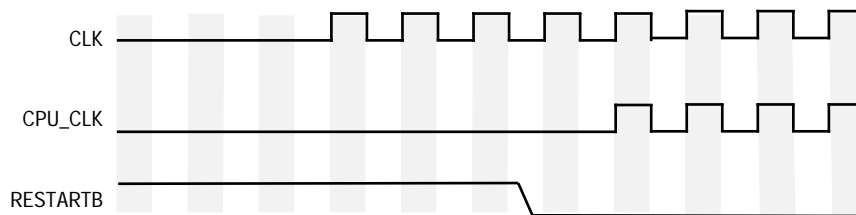


Figure 5. Clock Start Timing

- 4.) If the SCM68000 was put into a three-state condition the BGACKB signal (used for 3-wire bus arbitration) or the BRB signal (used for 2-wire bus arbitration) must be negated before the processor can begin executing instructions.

An example trap routine follows:

```
TRAP_x  MOVE.B #0,$low_power_address    /* Write that causes ADDRESS_MATCH to assert */
        STOP #0x2000                  /* STOP instruction with desired interrupt mask */
        RTE                            /* Return from the exception */
```

The first instruction (MOVE.B #0,\$low_power_address) writes a byte to the low-power address which will cause the external circuitry to begin the sequence that will stop the processor's clock. The second instruction (STOP #0x2000) is the STOP instruction that loads the SR with the immediate data. This allows the user to set the interrupt that will cause the processor to come out of the low-power mode. The final instruction (RTE) instructs the processor to return from the exception and resume normal processing.

Home Page:

www.freescale.com

email:

support@freescale.com

USA/Europe or Locations Not Listed:

Freescale Semiconductor
 Technical Information Center, CH370
 1300 N. Alma School Road
 Chandler, Arizona 85224
 (800) 521-6274
 480-768-2130

support@freescale.com

Europe, Middle East, and Africa:

Freescale Halbleiter Deutschland GmbH
 Technical Information Center
 Schatzbogen 7
 81829 Muenchen, Germany
 +44 1296 380 456 (English)
 +46 8 52200080 (English)
 +49 89 92103 559 (German)
 +33 1 69 35 48 48 (French)
support@freescale.com

Japan:

Freescale Semiconductor Japan Ltd.
 Headquarters
 ARCO Tower 15F
 1-8-1, Shimo-Meguro, Meguro-ku
 Tokyo 153-0064, Japan
 0120 191014
 +81 2666 8080
support.japan@freescale.com

Asia/Pacific:

Freescale Semiconductor Hong Kong Ltd.
 Technical Information Center
 2 Dai King Street
 Tai Po Industrial Estate,
 Tai Po, N.T., Hong Kong
 +800 2666 8080
support.asia@freescale.com

For Literature Requests Only:

Freescale Semiconductor
 Literature Distribution Center
 P.O. Box 5405
 Denver, Colorado 80217
 (800) 441-2447
 303-675-2140
 Fax: 303-675-2150
LDCForFreescaleSemiconductor@hibbertgroup.com

Information in this document is provided solely to enable system and software implementers to use Freescale Semiconductor products. There are no express or implied copyright licenses granted hereunder to design or fabricate any integrated circuits or integrated circuits based on the information in this document. Freescale Semiconductor reserves the right to make changes without further notice to any products herein. Freescale Semiconductor makes no warranty, representation or guarantee regarding the suitability of its products for any particular purpose, nor does Freescale Semiconductor assume any liability arising out of the application or use of any product or circuit, and specifically disclaims any and all liability, including without limitation consequential or incidental damages. "Typical" parameters which may be provided in Freescale Semiconductor data sheets and/or specifications can and do vary in different applications and actual performance may vary over time. All operating parameters, including "Typicals" must be validated for each customer application by customer's technical experts. Freescale Semiconductor does not convey any license under its patent rights nor the rights of others. Freescale Semiconductor products are not designed, intended, or authorized for use as components in systems intended for surgical implant into the body, or other applications intended to support or sustain life, or for any other application in which the failure of the Freescale Semiconductor product could create a situation where personal injury or death may occur. Should Buyer purchase or use Freescale Semiconductor products for any such unintended or unauthorized application, Buyer shall indemnify and hold Freescale Semiconductor and its officers, employees, subsidiaries, affiliates, and distributors harmless against all claims, costs, damages, and expenses, and reasonable attorney fees arising out of, directly or indirectly, any claim of personal injury or death associated with such unintended or unauthorized use, even if such claim alleges that Freescale Semiconductor was negligent regarding the design or manufacture of the part.