

Power Measurement

Application Note

Document Number: 926-77273

2/2008

This application note describes the current measurement capabilities of the 3-Stack board and explains how to obtain these measurements from the Debug board.

Contents

Taking Power Measurements on the i.MX31 3-Stack Board	2
Maxim MAX4071 Modules.....	2
Taking Readings from the Debug Board	3
Measuring the Current	5
Formula	5
Example	5

Taking Power Measurements on the i.MX31 3-Stack Board

The 3-Stack board provides the functionality for measuring voltage and current. Checking these measurements enables you to determine the overall product efficiency.

Maxim MAX4071 Modules

The CPU and Personality boards contain seven Maxim MAX4071 modules, which reduce power supply noise and improve the accuracy of the readings.

Figure 1 illustrates the MAX4031 module layout.

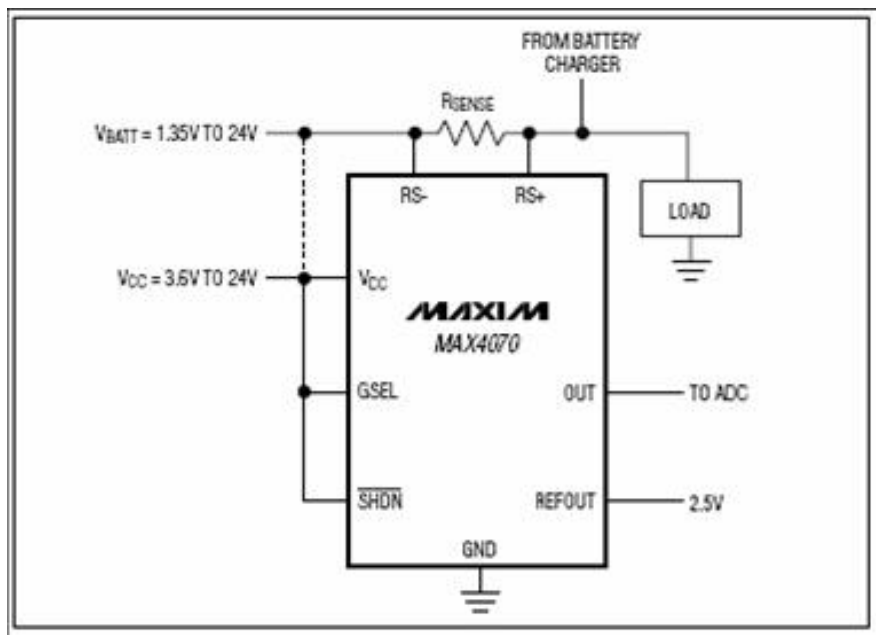


Figure Error! No text of specified style in document. MAX4071 Connection Diagram

The power measurement system provides a way to easily test the system, using four output voltages and seven amplified currents. Table 1 describes the voltage and current outputs.

Table 1 Voltage and Current Outputs

Identifier	Category	Description
Voltage	NA	VMAIN
Voltage	NA	5V from Wall power supply
Voltage	NA	Battery Voltage
Voltage	NA	1.8V peripheral voltage
Current	CPU	Atlas SW1: MX31 ARM Core and L2
Current	CPU	Atlas SW2: 1.8V combined to MX31, mDDR and NAND
Current	CPU	VMAIN: Combined Battery and/or Wall Supply
Current	Personality	1.8V combined to peripherals
Current	Personality	Lithium Prismatic Battery
Current	Personality	5V Wall Power Supply (power jack on Personality board)
Current	Personality	3.3V to Hard Drive

Taking Readings from the Debug Board

The Debug board provides a connector for obtaining the measurements, shown in Figure 2. Figure 3 provides a detailed view of the connector, and Table 1 describes the pin-out.

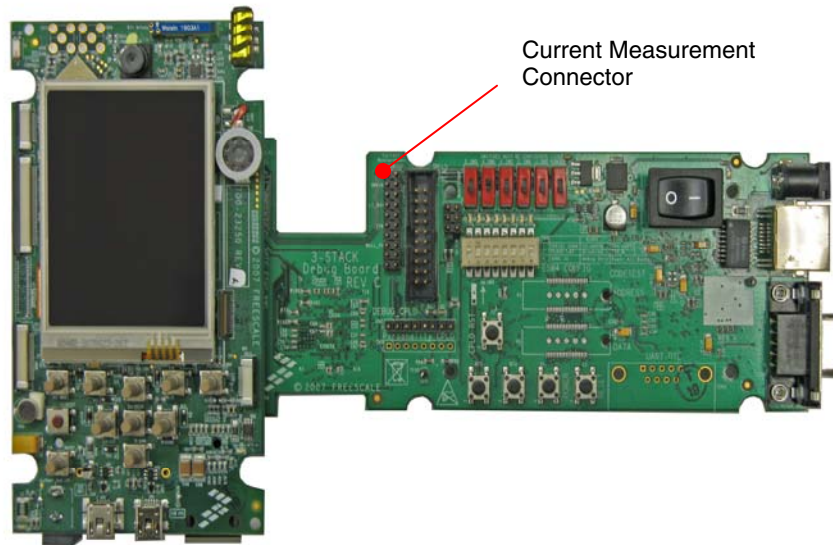


Figure 2 Current Measurement Connector on Debug Board

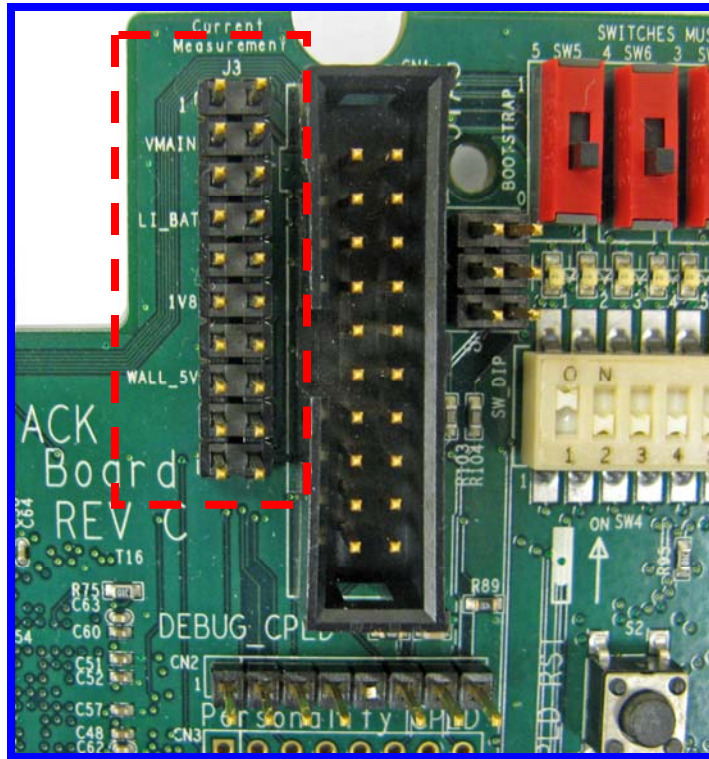


Figure 3 Current Measurement Connector Detail

Table 1 Current Measurement Connector Pin-Out

Pin Number	Description
1	Ground
2	SW1 Core and L2 current (1V2_1V6_SW1)
3	VMAIN voltage
4	1.8V Memories (1V8_SW2A)
5	Ground
6	VMAIN current
7	LI_BATTERY voltage
8	Reserved
9	Ground
10	Reserved
11	1.8V voltage
12	1.8V peripherals (EXT_1V8)
13	Ground
14	3.3V to HDD (HDD_3V3)
15	WALL_5V_IN
16	Wall Supply 5V (WALL_5V_IN)
17	Ground
18	Lithium Battery (LI_BATTERY)
19	Ground
20	Reserved

Measuring the Current

To measure the current, use these steps:

1. Measure the voltage value using a multimeter on the desired pin (current pin ex. PIN6 VMAIN current).

The value reflected in the pin is the voltage reading from the MAX4071 chip.

2. To obtain the current value, subtract 1.5 from the voltage measured.
3. Multiple the result by 500.
4. The current value is expressed in mA.

Formula

The formula for obtaining the current consumption from the MAX4071 readings is:

$$I = (V - 1.5) \times 500$$

Where V is the reading from the connector pin.

Example

Table 2 provides an example of the current consumption values for a given voltage on the pin.

Table 2 Example of Current Consumption Values

Voltage	Current (mA)
3.5 V	1000 mA
2.5 V	500 mA
1.5 V	0 mA
0.5 V	- 500 mA