

ES_P89LPC901

Errata sheet P89LPC901

Rev. 02 — 4 May 2010

Errata sheet

Document information

Info	Content
Keywords	P89LPC901 errata
Abstract	<p>This errata sheet describes both the known functional problems and any deviations from the electrical specifications known at the release date of this document.</p> <p>Each deviation is assigned a number and its history is tracked in a table at the end of the document.</p>



Revision history

Rev	Date	Description
02	20100504	<ul style="list-style-type: none">The format of this errata sheet has been redesigned to comply with the new identity guidelines of NXP Semiconductors.

Contact information

For more information, please visit: <http://www.nxp.com>

For sales office addresses, please send an email to: salesaddresses@nxp.com

1. Product identification

The P89LPC901 devices typically have the following top-side marking:

```
P89LPC901x x
xxxxxxx xx
xxYYWW R
```

The last letter in the last line (field 'R') will identify the device revision. This Errata Sheet covers the following revisions of the P89LPC901:

Table 1. Device revision table

Revision identifier (R)	Revision description
'L'	Initial device revision
'A'	Second device revision

Field 'YY' states the year the device was manufactured. Field 'WW' states the week the device was manufactured during that year.

2. Errata overview

Table 2. Functional problems table

Functional problems	Short description	Fixed in revision
I/O.1	Port configuration	'A'
I/O.2	P3.0 can be an output during power up cycle	none
I/O.3	Port 0.5 can draw additional power	'A'
ICP.1	ICP Global Erase	'A'
RESET.1	External reset does not function correctly when using DIVM	'A'
DIVM.1	Using DIVM in power-down mode	none

Table 3. AC/DC deviations table

AC/DC deviations	Short description	Fixed in revision
-	-	-

Table 4. Errata notes

Note	Short description	Fixed in revision
V _{DD} .1	V _{DD} power cycling	none
IRC.1	Internal RC oscillator accuracy	none

3. Functional problems detail

3.1 I/O.1: Port configuration

Introduction:

The I/O ports of the P89LPC901 can be configured to four different modes by writing to the PxM1 and PxM2 registers. The default mode after Reset is 'Input Only'.

Problem:

Coming out of Reset, the P89LPC901 port registers should be initialized as follows. Without executing this sequence, the P89LPC901 could consume additional power.

Work-around:

Initialize the P89LPC901 ports in two steps:

Step 1: Configure all port registers with this initialization.

```
P0M1 = 0x00;      // set P0 to quasi-bidirectional
P1M1 = 0x00;      // set P1 to quasi-bidirectional
P2M1 = 0x00;      // set P2 to quasi-bidirectional
P3M1 = 0x00;      // set P3 to quasi-bidirectional
P0^0 = 1;         // set internal P0.0 to 'high'
```

Step 2: Configure the port pins on the P89LPC901 to their required mode **using only AND and OR** operations. Make sure to modify only the port pins available on the P89LPC901.

3.2 I/O.2: Port 3.0 can be an output during a power-up cycle

Introduction:

The P89LPC901 can be selected to be clocked by an internal RC oscillator. When the internal RC oscillator is selected, P3.0 and P3.1 (which would be used for the crystal oscillator circuit) pins can now be used as general purpose IO pins.

Problem:

When the P89LPC901 is powered up the configuration of the UCFG1 is read out and the P89LPC901 configured accordingly. The UCFG1 gets read out on the low brownout level of the P89LPC901 (typically around 2.3 V). Before the UCFG1 is read out the crystal oscillator circuit might be enabled. When the crystal circuit is enabled P3.0 is driven to the inverse state of P3.1.

Work-around:

Please make sure your external circuitry connected to P3.0 is not affected by this behavior. Otherwise it is recommended to switch to a different port pin.

3.3 I/O.3: Port 0.5 can draw additional power

Introduction:

Port 0.5 is a general purpose I/O pin.

Problem:

P0.5 always has an active internal pull-up, which will draw additional power when the port is written low.

Work-around:

No known workaround.

3.4 ICP.1: ICP Global Erase

Introduction:

The P89LPC901 can be programmed using ICP (In-Circuit Programming). One of the ICP functions is the Erase Global command, which will erase the entire chip including the security bytes and configuration information.

Problem:

When giving the Erase Global command through the ICP interface the P89LPC901 will not clear the busy flag and stay busy forever.

Work-around:

The workaround can be done in four steps:

Step 1: Shift out the WR_FMCON command followed by the Erase Global opcode.

Step 2: Wait 5 ms.

Step 3: Do 8 dummy reads with the RD_FMDATA_I command.

Step 4: Read FMCON until the busy flag gets cleared.

Please also see [Figure 1](#).

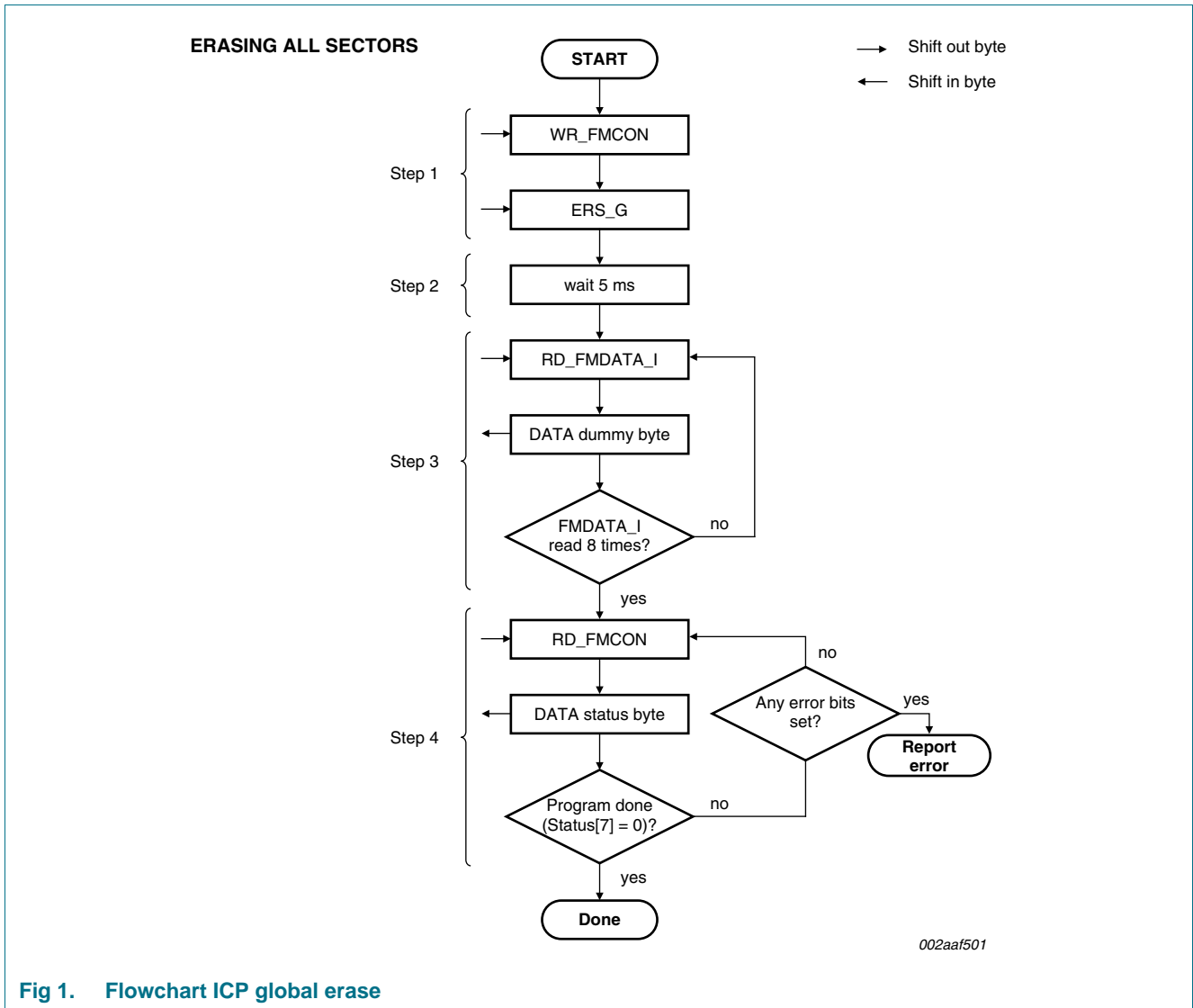


Fig 1. Flowchart ICP global erase

3.5 RESET.1: External reset does not function correctly when using DIVM

Introduction:

The P89LPC901 can be set up to use either an internal reset or an external reset pin on P1.5. The DIVM register can be used to divide down the internal CCLK down.

Problem:

When the P89LPC901 is configured to have an external reset pin on P1.5 and in the program the DIVM register is programmed to a value different from 0x00 to slow down CCLK, then the next reset pulse will not generate a proper reset for the P89LPC901. A power cycle has to be applied for the P89LPC901 to start up again properly.

Work-around:

Use the internal reset function.

3.6 DIVM.1: Using DIVM in power-down mode

Introduction:

The P89LPC901 has a DIVM register that can be used to divide the cclk down. Using DIVM can greatly reduce power when in active mode.

Problem:

When DIVM is used in active mode and power-down mode is then entered the P89LPC901 can not be waken up from power-down mode.

Work-around:

Before entering power-down mode set DIVM back to 0x00. This way the P89LPC901 will be operating full speed for one instruction before entering power-down mode. After the P89LPC901 has been waken up DIVM can be set back to its original value.

4. AC/DC deviations detail

No known errata

5. Errata notes

5.1 V_{DD} .1: V_{DD} power cycling

To generate a proper Power-On Reset (POR), V_{DD} must have dropped below 0.2 V before being powered back up. Power-cycling without V_{DD} having dropped below 0.2 V may result in incorrect Program Counter values.

Please also see the V_{POR} specification in P89LPC901 data sheet, DC electrical characteristics. The Reset section of the data sheet states that during a power cycle, V_{DD} must fall below V_{POR} .

5.2 IRC.1: Internal RC oscillator accuracy

To be able to guarantee the Internal RC oscillator accuracy over the full operating range the V_{DD} supply has to be decoupled sufficiently. Sufficient decoupling is dependant on the noise level in the application, typically a 1 uF capacitor should be sufficient for most applications.

Noise on the V_{DD} supply pins can cause the Internal RC oscillator to go slightly outside of the specified range.

6. Legal information

6.1 Definitions

Draft — The document is a draft version only. The content is still under internal review and subject to formal approval, which may result in modifications or additions. NXP Semiconductors does not give any representations or warranties as to the accuracy or completeness of information included herein and shall have no liability for the consequences of use of such information.

6.2 Disclaimers

Limited warranty and liability — Information in this document is believed to be accurate and reliable. However, NXP Semiconductors does not give any representations or warranties, expressed or implied, as to the accuracy or completeness of such information and shall have no liability for the consequences of use of such information.

In no event shall NXP Semiconductors be liable for any indirect, incidental, punitive, special or consequential damages (including - without limitation - lost profits, lost savings, business interruption, costs related to the removal or replacement of any products or rework charges) whether or not such damages are based on tort (including negligence), warranty, breach of contract or any other legal theory.

Notwithstanding any damages that customer might incur for any reason whatsoever, NXP Semiconductors' aggregate and cumulative liability towards customer for the products described herein shall be limited in accordance with the *Terms and conditions of commercial sale* of NXP Semiconductors.

Right to make changes — NXP Semiconductors reserves the right to make changes to information published in this document, including without limitation specifications and product descriptions, at any time and without notice. This document supersedes and replaces all information supplied prior to the publication hereof.

Suitability for use — NXP Semiconductors products are not designed, authorized or warranted to be suitable for use in medical, military, aircraft, space or life support equipment, nor in applications where failure or malfunction of an NXP Semiconductors product can reasonably be expected to result in personal injury, death or severe property or environmental damage. NXP Semiconductors accepts no liability for inclusion and/or use of NXP Semiconductors products in such equipment or applications and therefore such inclusion and/or use is at the customer's own risk.

Applications — Applications that are described herein for any of these products are for illustrative purposes only. NXP Semiconductors makes no representation or warranty that such applications will be suitable for the specified use without further testing or modification.

NXP Semiconductors does not accept any liability related to any default, damage, costs or problem which is based on a weakness or default in the customer application/use or the application/use of customer's third party customer(s) (hereinafter both referred to as "Application"). It is customer's sole responsibility to check whether the NXP Semiconductors product is suitable and fit for the Application planned. Customer has to do all necessary testing for the Application in order to avoid a default of the Application and the product. NXP Semiconductors does not accept any liability in this respect.

Export control — This document as well as the item(s) described herein may be subject to export control regulations. Export might require a prior authorization from national authorities.

6.3 Trademarks

Notice: All referenced brands, product names, service names and trademarks are the property of their respective owners.

7. Contents

1	Product identification	3
2	Errata overview	3
3	Functional problems detail	4
3.1	I/O.1: Port configuration	4
	Introduction:	4
	Problem:	4
	Work-around:	4
3.2	I/O.2: Port 3.0 can be an output during a power-up cycle	4
	Introduction:	4
	Problem:	4
	Work-around:	4
3.3	I/O.3: Port 0.5 can draw additional power	5
	Introduction:	5
	Problem:	5
	Work-around:	5
3.4	ICP.1: ICP Global Erase	5
	Introduction:	5
	Problem:	5
	Work-around:	5
3.5	RESET.1: External reset does not function correctly when using DIVM.	7
	Introduction:	7
	Problem:	7
	Work-around:	7
3.6	DIVM.1: Using DIVM in power-down mode	7
	Introduction:	7
	Problem:	7
	Work-around:	7
4	AC/DC deviations detail	7
5	Errata notes	8
5.1	V _{DD} .1: V _{DD} power cycling	8
5.2	IRC.1: Internal RC oscillator accuracy	8
6	Legal information	9
6.1	Definitions	9
6.2	Disclaimers	9
6.3	Trademarks	9
7	Contents	10

Please be aware that important notices concerning this document and the product(s) described herein, have been included in section 'Legal information'.

© NXP B.V. 2010.

All rights reserved.

For more information, please visit: <http://www.nxp.com>

For sales office addresses, please send an email to: salesaddresses@nxp.com

Date of release: 4 May 2010

Document identifier: ES_P89LPC901_2