

ACCESS

MEDIA GATEWAY WITH IP AND ATM INTERWORKING

KEY BENEFITS

- Scalable implementation of high-performance and high density voice/data capabilities, from 2000 to 8000 voice channels at G.711, for a wide range of applications
- Single "platform" architecture for both IP-based and ATM oriented systems, including interworking between them
- True, fine-grained, multiservice support for high numbers of users
- Simplified line card design with lower power and board real estate plus ability to leverage single-vendor solution

OVERVIEW

With the growth in data network traffic driving major changes in public networks, the convergence of existing voice traffic onto the data network infrastructure promises significant benefits (such as reduced costs and simplified network management) for carriers and enterprises alike. Media gateways and switches that support the integration of Voice over Internet Protocol (VoIP), legacy public switched telephone network (PSTN), and ATM networks make this convergence possible.

Media gateway functions are being implemented in standalone devices, or as modules in multi-service switches, edge routers, remote access concentrators, or PSTN switches. In all cases, media gateways in share common hardware and software design challenges.

DESIGN CHALLENGES

Media gateway implementations are complicated by the wide variety of technologies that make up existing networks. These include the circuit-switched PSTN, ATM and Frame Relay based public data networks, and the IP-based Internet, all of which may be carried over the same SONET transport network.

Functions required of media gateways typically include the conversion (and compression) of Time-Division-Multiplexed (TDM) voice circuits onto ATM networks using a variety of adaptation protocols (AAL-0, AAL-1, AAL-2 and AAL-5), or onto packet-based networks using IP (including RTP), Frame Relay, or extensions of both. Voice switches that support the switching of voice circuits among the various network interfaces may require interworking between different protocols (such as between ATM and IP-based networks) as well.

The specific design challenges for media gateways include:

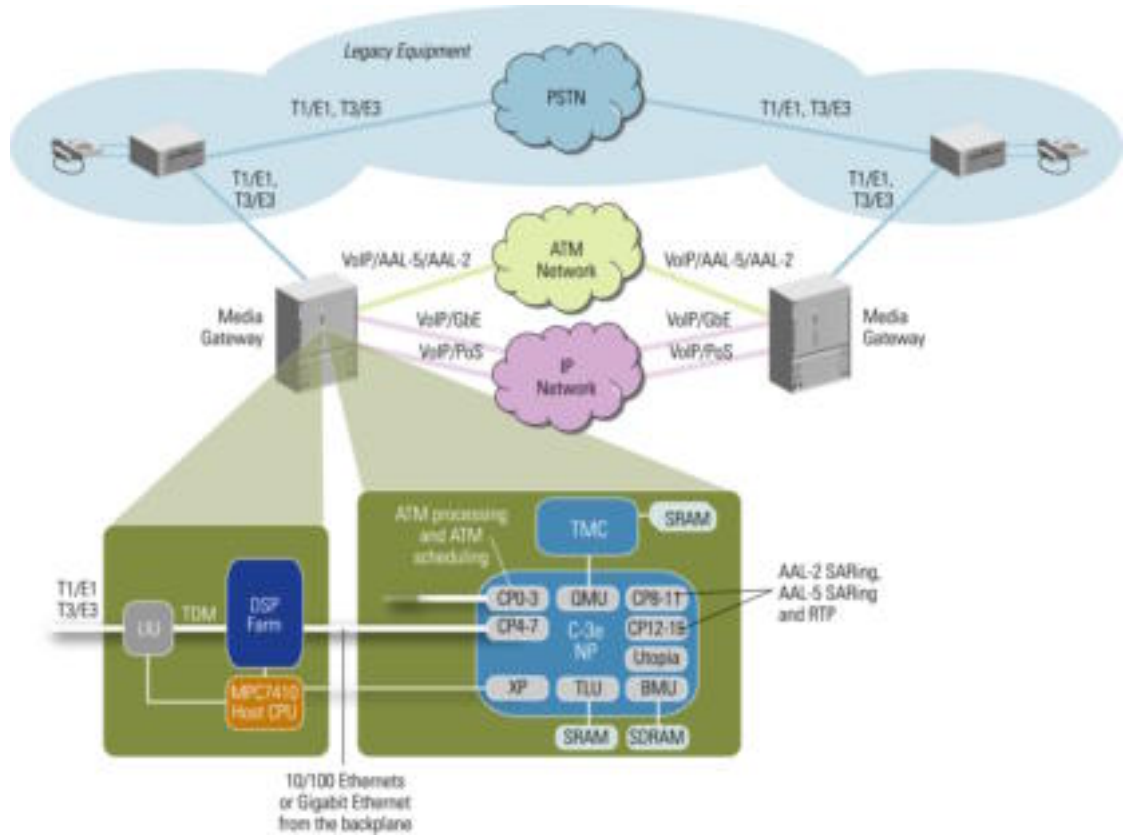
- Accommodating increasing numbers of voice (or fax and modem) circuits per slot within a specific networking device.
- Supporting the increasing number of different network interfaces and speeds required, ranging from channelized T1/E1 lines through OC-12 SONET and Gigabit Ethernet interfaces.
- Adapting to the number of different protocols used (such as ATM AAL-2/AAL-5, VoIP/RTP, Packet-over-SONET/PPP, MPLS, and so on), even as the protocol standards evolve and improve.
- Managing Quality of Service (QoS) to ensure prioritization of latency-sensitive traffic, such as voice.
- Providing the flexibility to add new features and functions through software as market demands dictate in the future.

FREESCALE SOLUTION

Freescale offers complete solutions for all aspects of media gateway and switch implementations. This includes the StarCore® Digital Signal Processors (DSPs) required to convert and compress TDM voice circuits into packet or cell-based flows, the C-Port™ network processors (NPs) required to terminate or switch the packet or cell-based circuits, and the PowerPC® host processors required to implement the control functions that manage each voice connection. The network processing function is the focus of this Application Fact Sheet.

Motorola's C-Port family, including network processors, traffic management coprocessors, and interface adaptors, provides the flexibility to support the wide range of protocols required for today's media gateway implementations. The internal processing resources of the C-3e NP

Media gateway solution for running voice over IP and ATM networks using multiple Freescale networking silicon technologies including network processors, traffic management coprocessors, DSPs, and host processors



are particularly well suited to be used at the “uplink” aggregation level in media gateway designs, where extensive protocol conversion and switching functions are required.

The figure illustrates a VoIP/VoATM network and details the tasks handled by the NP. On one side of the gateway, TDM traffic converted and compressed by Freescale DSPs is aggregated on to high density line cards (capable of supporting 2000 voice channels per line card with the C-3e NP, and over 8000 with the C-5e NP) and then passed on to an internal Ethernet bus (or other media).

These newly created packets are forwarded to the C-3e NP, which formats the voice packets into the desired network protocol, which may include IP and ATM. With IP, the voice packet is formatted into a specific VoIP protocol (such as RTP), possibly tagged as part of an MPLS session, and forwarded onto an IP-based network (over Ethernet or SONET), where QoS may be guaranteed through the use of various protocols including DiffServ.

ATM is suitable for carrying voice because of its built-in QoS features. Options for ATM processing in media gateways might include VoIP over AAL-5 over ATM, where voice packets from the DSPs are formatted into a specific VoIP protocol (such as RTP), which are then converted into AAL-5 PDUs, and segmented into ATM cells. Alternatively, voice packets may be formatted into ATM AAL-2 “mini-packets”, one or more of which are encapsulated into ATM cells.

Interworking between IP and ATM, such as switching within and between RTP and AAL-2 flows, can be achieved easily with the C-Port network processor architecture,

Fine grained QoS capabilities can also be added using Motorola’s traffic management coprocessors (TMCs). These TMCs are multi-protocol and can thus provide traffic policing, shaping, monitoring, and scheduling for both ATM and IP traffic, even simultaneously. They ensure that voice traffic is accorded the correct priority and that users receive toll-quality service.




The flexibility and performance of the C-Port family allows a variety of media gateway applications to be created all based on a common software base. Applications are written in C-language using Applications Programming Interfaces (APIs), which enables you to easily upgrade functionality and scale software to higher bandwidths.

DEVELOPMENT ENVIRONMENT

The C-Port family development environment consists of the following components:

- C-Ware™ Applications Library (CAL)** — Comprehensive set of reference applications for building networking systems based on Motorola's C-Port family. The CAL significantly accelerates customer software development by providing extensive reference source code that is instrumented for and tested with the CST.
- C-Ware Software Toolset (CST)** — Functional and performance accurate simulation environment, standard GNU-based compiler and debugger, GUI performance analysis tool, traffic scripting tools, and comprehensive C-Ware APIs.
- C-Ware Development System (CDS)** — Compact PCI chassis with Freescale MPC750 Host Application Module, which can also include NP Switch Modules, TMC Daughter Cards, and various Physical Interface Modules (PIMS). Complete hardware reference designs also available.

Vendors may also select Wind River® Tornado® for Managed Switches (TMS) to program the host processor/control plane software. Freescale has established an alliance with Wind River to provide integration of the C-Port network processors with TMS 2.0 supporting both Layer 2 and Layer 3 services. In addition, the Host Application Module in the CDS runs VxWorks® on the MPC750.

		
PowerQUICC™	C-Port™	StarCore®
Integrated Communications Processors	Network Processors & Traffic Managers	Digital Signal Processors

FREESCALE ORDERING INFORMATION

PART NUMBER	NAME	ADDITIONAL INFORMATION
PCC3E0RX180WB0B	C-3e NP	5.5 W @ 180 MHz freescale.com/networkprocessors
PCC5E0RX266WB0B	C-5e NP	9 W @ 266 MHz freescale.com/networkprocessors
PCQ500RX000WA0A	Q-5 TMC	5Gbps throughput freescale.com/networkprocessors
MPC8260	PowerQUICC™	freescale.com/PowerQUICC
MSC8101 MSC8102	DSP Farm	freescale.com/DSP
CSTC501W*	C-Ware Software Toolset	Web site download of current CST release (Windows or UNIX)
CDEV101A†	C-Ware Development System	CDS Base Unit (Chassis, Power Supply, Single Board Computer)

* The CST can be downloaded from freescale.com/support

† Ask your sales representative or distributor for details and availability of system modules, which you order separately.

SMART NETWORKS ALLIANCES

VENDOR	DESCRIPTION	CONTACT
Corrent™	For high-performance security processing	Tel: 480-648-2300 sales@corrent.com
IDT™	For advanced classification	Tel: 613-724-6004 Fax: 613-724-6008
Wind River Systems	For Tornado for Managed Switches and RTOS	Tel: 800-545-9463 Fax: 510-814-2010

How to Reach Us:

Home Page:

www.freescale.com

E-mail:

support@freescale.com

USA/Europe or Locations Not Listed:

Freescale Semiconductor
 Technical Information Center, CH370
 1300 N. Alma School Road
 Chandler, Arizona 85224
 +1-800-521-6274 or +1-480-768-2130
support@freescale.com

Europe, Middle East, and Africa:

Freescale Halbleiter Deutschland GmbH
 Technical Information Center
 Schatzbogen 7
 81829 Muenchen, Germany
 +44 1296 380 456 (English)
 +46 8 52200080 (English)
 +49 89 92103 559 (German)
 +33 1 69 35 48 48 (French)
support@freescale.com

Japan:

Freescale Semiconductor Japan Ltd.
 Headquarters
 ARCO Tower 15F
 1-8-1, Shimo-Meguro, Meguro-ku,
 Tokyo 153-0064
 Japan
 0120 191014 or +81 3 5437 9125
support.japan@freescale.com

Asia/Pacific:

Freescale Semiconductor Hong Kong Ltd.
 Technical Information Center
 2 Dai King Street
 Tai Po Industrial Estate
 Tai Po, N.T., Hong Kong
 +800 2666 8080
support.asia@freescale.com

For Literature Requests Only:

Freescale Semiconductor Literature Distribution Center
 P.O. Box 5405
 Denver, Colorado 80217
 1-800-441-2447 or 303-675-2140
 Fax: 303-675-2150
LDCForFreescaleSemiconductor@hibbertgroup.com

Information in this document is provided solely to enable system and software implementers to use Freescale Semiconductor products. There are no express or implied copyright licenses granted hereunder to design or fabricate any integrated circuits or integrated circuits based on the information in this document. Freescale Semiconductor reserves the right to make changes without further notice to any products herein. Freescale Semiconductor makes no warranty, representation or guarantee regarding the suitability of its products for any particular purpose, nor does Freescale Semiconductor assume any liability arising out of the application or use of any product or circuit, and specifically disclaims any and all liability, including without limitation consequential or incidental damages. "Typical" parameters which may be provided in Freescale Semiconductor data sheets and/or specifications can and do vary in different applications and actual performance may vary over time. All operating parameters, including "Typicals" must be validated for each customer application by customer's technical experts. Freescale Semiconductor does not convey any license under its patent rights nor the rights of others. Freescale Semiconductor products are not designed, intended, or authorized for use as components in systems intended for surgical implant into the body, or other applications intended to support or sustain life, or for any other application in which the failure of the Freescale Semiconductor product could create a situation where personal injury or death may occur. Should Buyer purchase or use Freescale Semiconductor products for any such unintended or unauthorized application, Buyer shall indemnify and hold Freescale Semiconductor and its officers, employees, subsidiaries, affiliates, and distributors harmless against all claims, costs, damages, and expenses, and reasonable attorney fees arising out of, directly or indirectly, any claim of personal injury or death associated with such unintended or unauthorized use, even if such claim alleges that Freescale Semiconductor was negligent regarding the design or manufacture of the part.