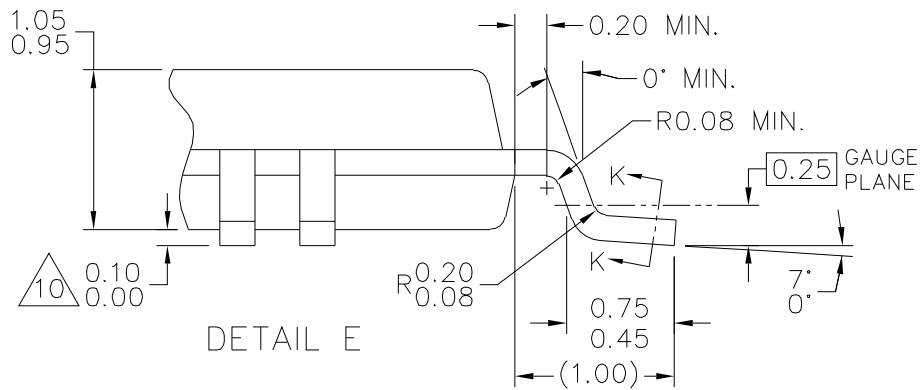
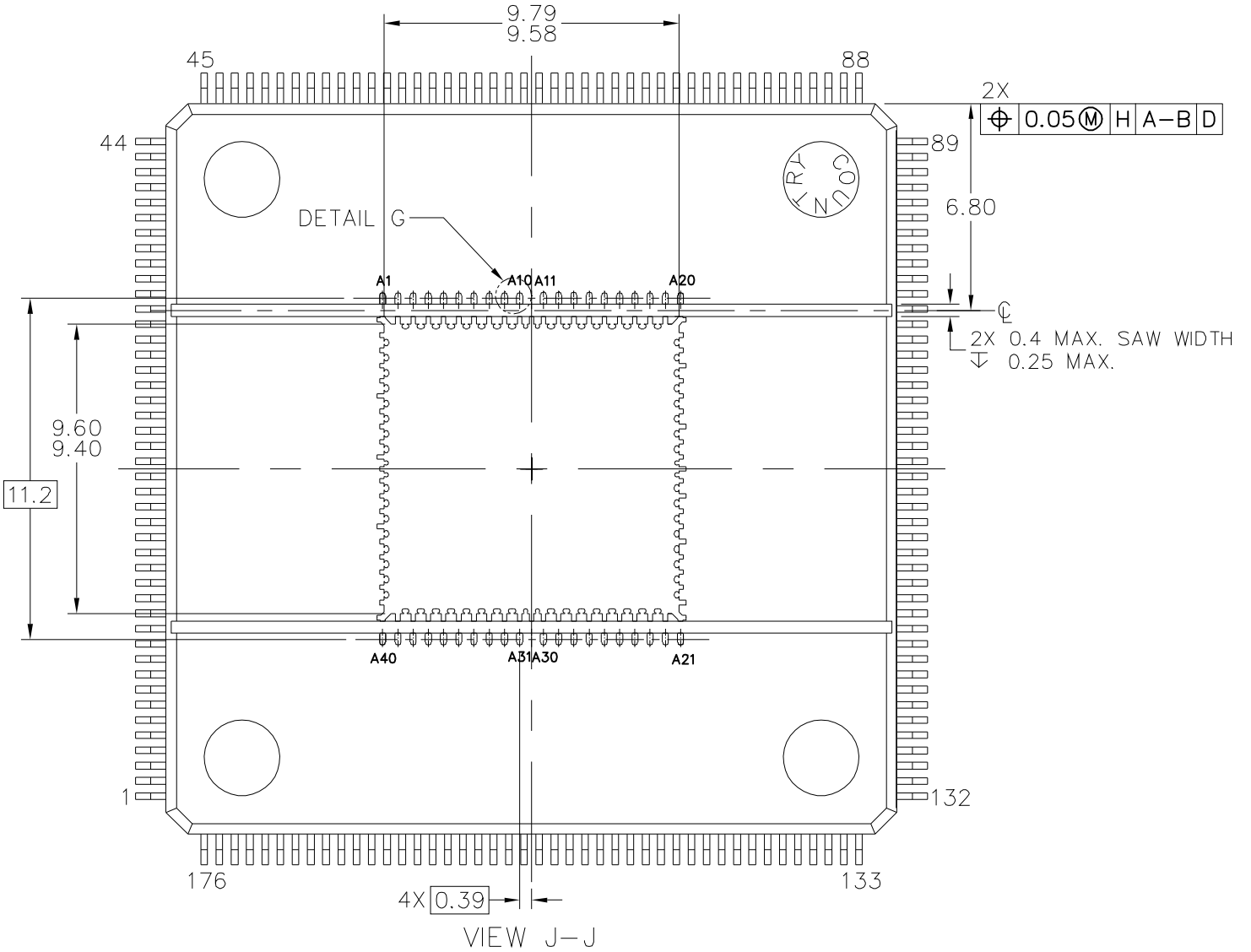
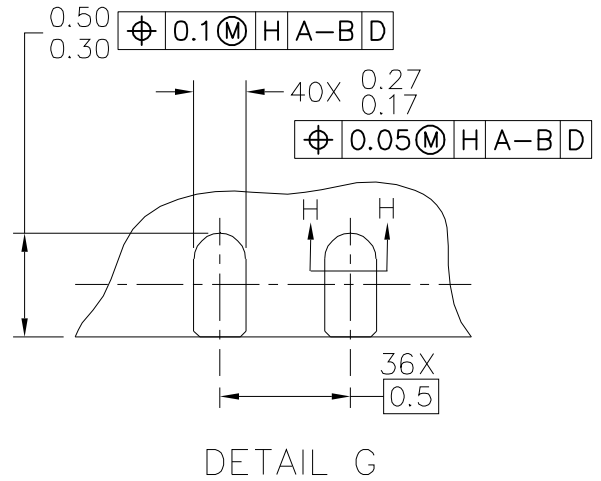
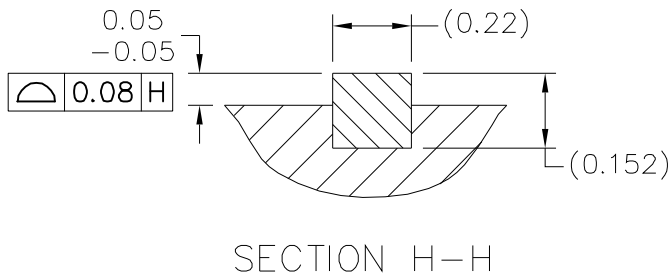
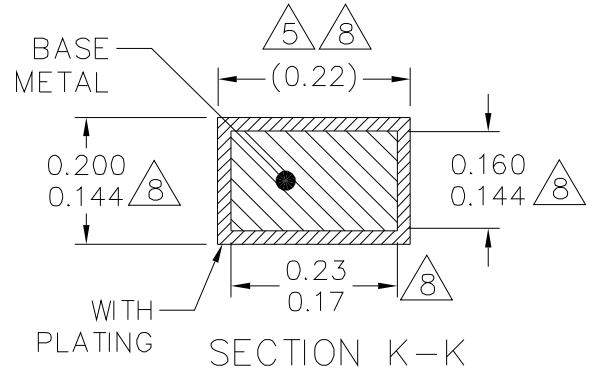
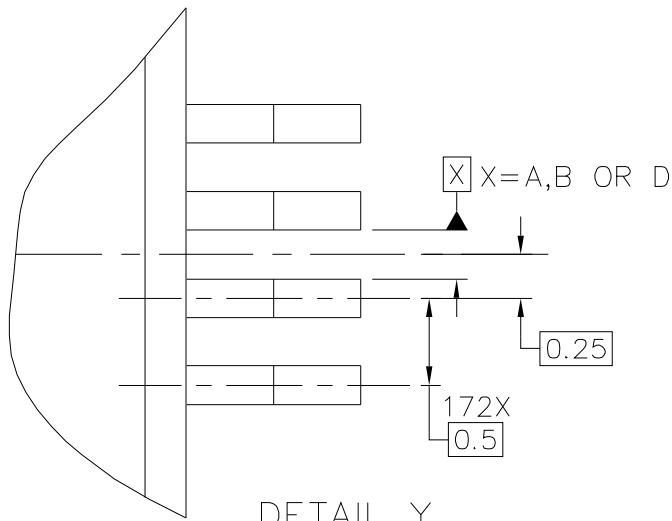


© NXP SEMICONDUCTORS N.V. ALL RIGHTS RESERVED	<b>MECHANICAL OUTLINE</b>	PRINT VERSION NOT TO SCALE
TITLE: TQFP, FusionQuad®, 24 X 24 X 1.0 PKG, 0.5 PITCH, 216LD, 9.86 X 9.50 EXPOSED PAD	DOCUMENT NO: 98ASA00366D	REV: D
	STANDARD: NON-JEDEC	
	SOT1580-1	07 JAN 2016



© NXP SEMICONDUCTORS N.V. ALL RIGHTS RESERVED	<b>MECHANICAL OUTLINE</b>	PRINT VERSION NOT TO SCALE	
TITLE: TQFP, FusionQuad <sup>®</sup> ,		DOCUMENT NO: 98ASA00366D	REV: D
24 X 24 X 1.0 PKG, 0.5 PITCH, 216LD, 9.86 X 9.50 EXPOSED PAD		STANDARD: NON-JEDEC	
		SOT1580-1	07 JAN 2016



© NXP SEMICONDUCTORS N.V. ALL RIGHTS RESERVED	<b>MECHANICAL OUTLINE</b>	PRINT VERSION NOT TO SCALE
TITLE: TQFP, FusionQuad®, 24 X 24 X 1.0 PKG, 0.5 PITCH, 216LD, 9.86 X 9.50 EXPOSED PAD	DOCUMENT NO: 98ASA00366D	REV: D
	STANDARD: NON-JEDEC	
	SOT1580-1	07 JAN 2016



NOTES:

1. DIMENSIONS ARE IN MILLIMETERS.
2. INTERPRET DIMENSIONS AND TOLERANCES PER ASME Y14.5M-1994.
3. DATUMS A, B AND D TO BE DETERMINED AT DATUM PLANE H.
4. DIMENSIONS TO BE DETERMINED AT SEATING PLANE C.
5. DIMENSION DOES NOT INCLUDE DAMBAR PROTRUSION. ALLOWABLE DAMBAR PROTRUSION SHALL NOT CAUSE THE LEAD WIDTH TO EXCEED THE MAXIMUM DIMENSION BY MORE THAN 0.08 MM. DAMBAR CANNOT BE LOCATED ON THE LOWER RADIUS OR THE FOOT.
6. DIMENSIONS DO NOT INCLUDE MOLD PROTRUSION. ALLOWABLE PROTRUSION IS 0.25 MM PER SIDE. DIMENSIONS ARE MAXIMUM PLASTIC BODY SIZE DIMENSIONS INCLUDING MOLD MISMATCH.
7. EXACT SHAPE OF EACH CORNER IS OPTIONAL.
8. THESE DIMENSIONS APPLY TO THE FLAT SECTION OF THE LEAD BETWEEN 0.10 MM AND 0.25 MM FROM THE LEAD TIP.
9. MAXIMUM ALLOWABLE DIE THICKNESS TO BE ASSEMBLED IN THIS PACKAGE FAMILY IS 0.38 MILLIMETERS.
10. DISTANCE DEFINED FROM THE SEATING PLANE TO THE LOWEST POINT OF THE PACKAGE BODY.
11. COPLANARITY APPLIES TO BOTH THE EXPOSED DIE PAD AND THE TERMINALS.
12. FUSIONQUAD IS A TRADEMARKED PACKAGE OF AMKOR TECHNOLOGIES.

© NXP SEMICONDUCTORS N.V. ALL RIGHTS RESERVED	<b>MECHANICAL OUTLINE</b>	PRINT VERSION NOT TO SCALE
TITLE: TQFP, FusionQuad®, 24 X 24 X 1.0 PKG, 0.5 PITCH, 216LD, 9.86 X 9.50 EXPOSED PAD	DOCUMENT NO: 98ASA00366D	REV: D
	STANDARD: NON-JEDEC	
	SOT1580-1	07 JAN 2016