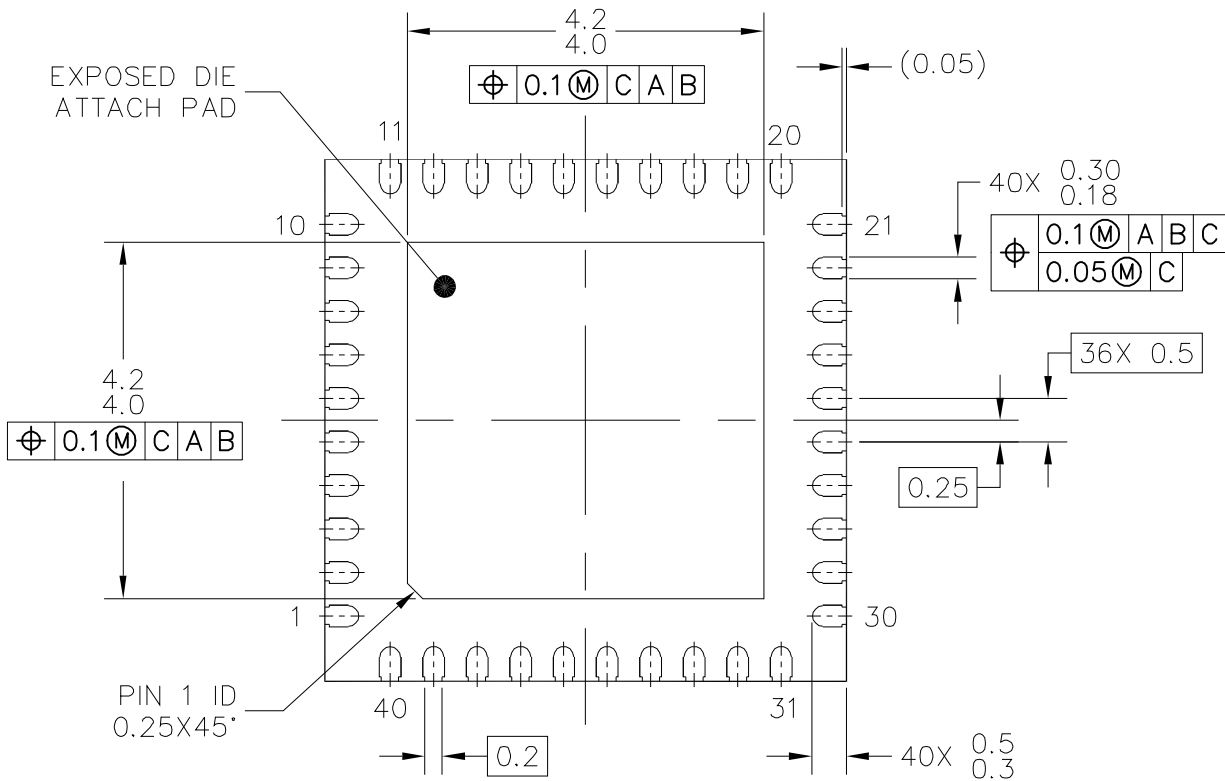
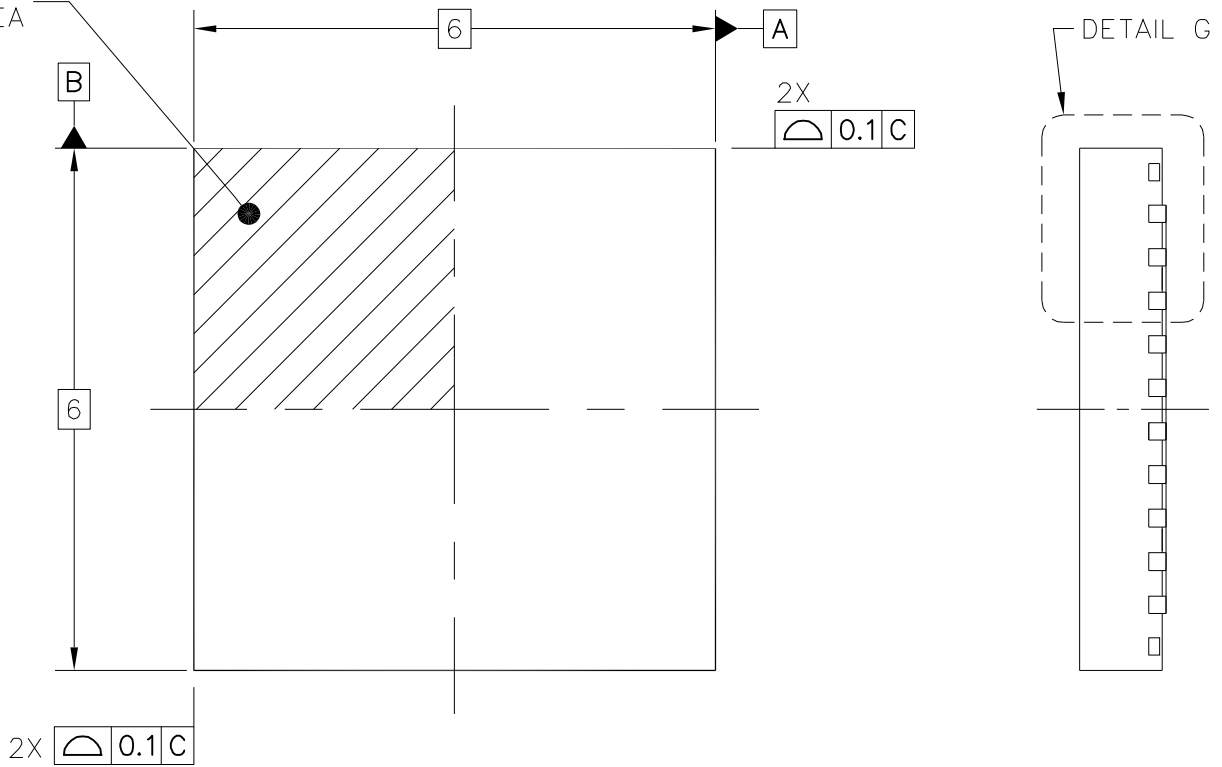
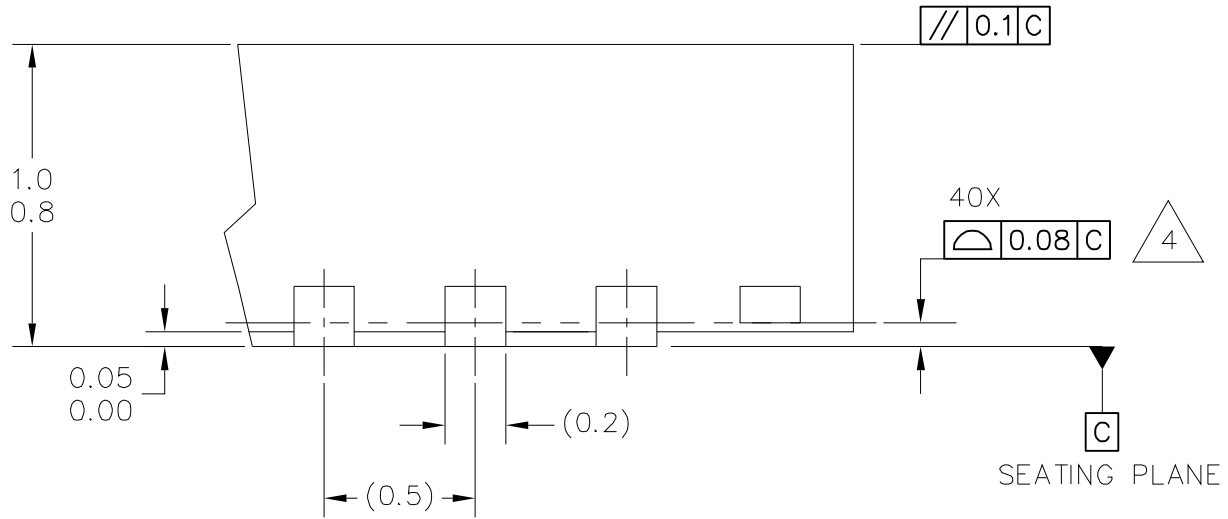




PIN 1
INDEX AREA



© NXP SEMICONDUCTORS N.V. ALL RIGHTS RESERVED	MECHANICAL OUTLINE	PRINT VERSION NOT TO SCALE
TITLE: QFN, THERMALLY ENHANCED, 6 X 6 X 0.9, 0.5 PITCH, 40 TERMINAL	DOCUMENT NO: 98ASA00619D REV: A STANDARD: NON-JEDEC SOT618-10 13 JAN 2016	

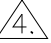


DETAIL G
VIEW ROTATED 90°CW

© NXP SEMICONDUCTORS N.V. ALL RIGHTS RESERVED	MECHANICAL OUTLINE	PRINT VERSION NOT TO SCALE	
TITLE: QFN, THERMALLY ENHANCED, 6 X 6 X 0.9, 0.5 PITCH, 40 TERMINAL		DOCUMENT NO: 98ASA00619D	REV: A
		STANDARD: NON-JEDEC	
		SOT618-10	13 JAN 2016



NOTES:

1. ALL DIMENSIONS ARE IN MILLIMETERS.
2. DIMENSIONING AND TOLERANCING PER ASME Y14.5M-1994.
3. THIS IS A NON-JEDEC REGISTERED PACKAGE.
4.  COPLANARITY APPLIES TO LEADS AND DIE ATTACH FLAG.
5. MIN. METAL GAP SHOULD BE 0.2 MM.

© NXP SEMICONDUCTORS N.V. ALL RIGHTS RESERVED	MECHANICAL OUTLINE	PRINT VERSION NOT TO SCALE	
TITLE: QFN, THERMALLY ENHANCED, 6 X 6 X 0.9, 0.5 PITCH, 40 TERMINAL		DOCUMENT NO: 98ASA00619D	REV: A
		STANDARD: NON-JEDEC	
		SOT618-10	13 JAN 2016