

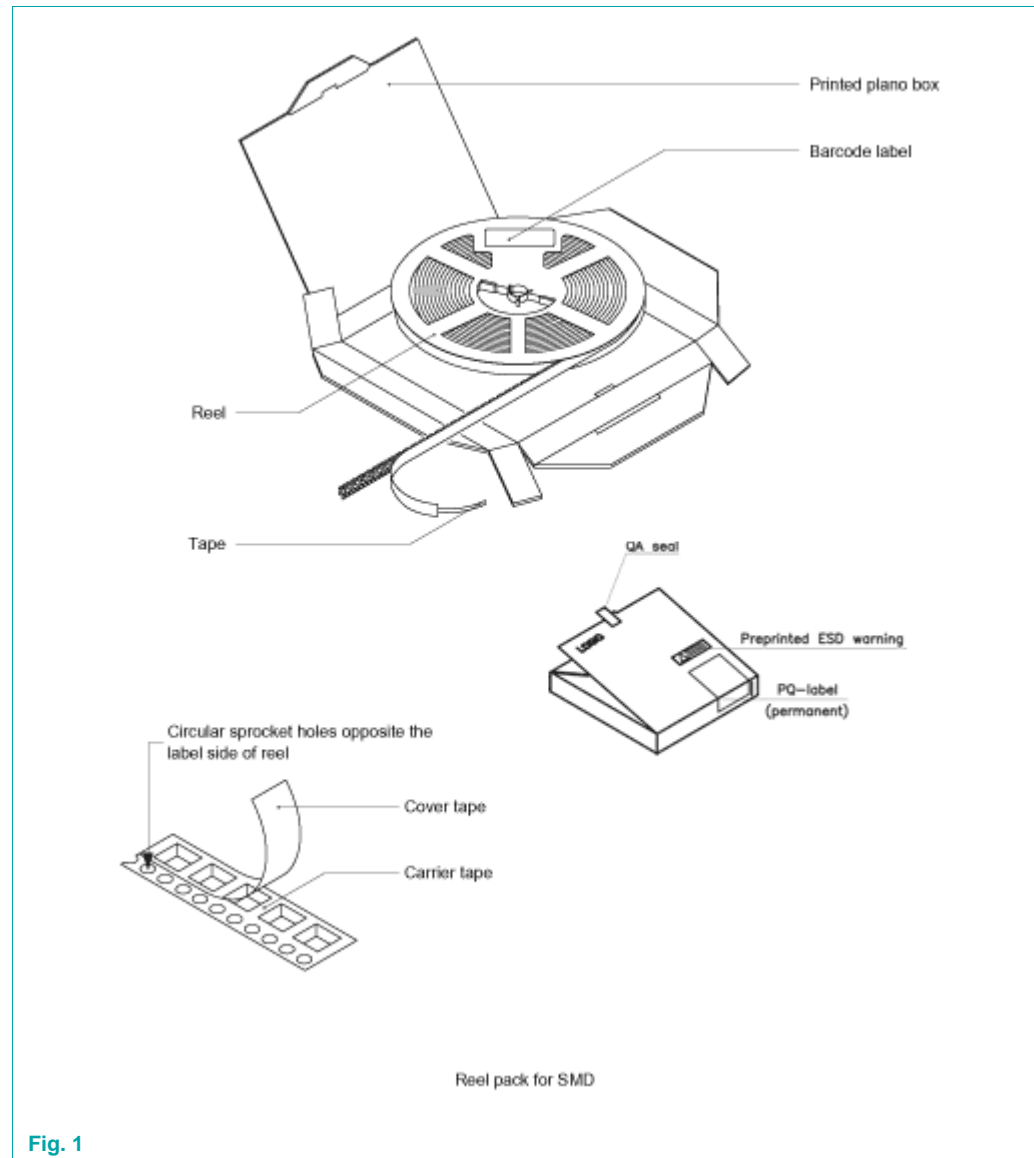
# SOT1049-2

Product orientation 12NC ending 115

Rev. 02 — 27 July 2011

Packing information

## 1. Packing method

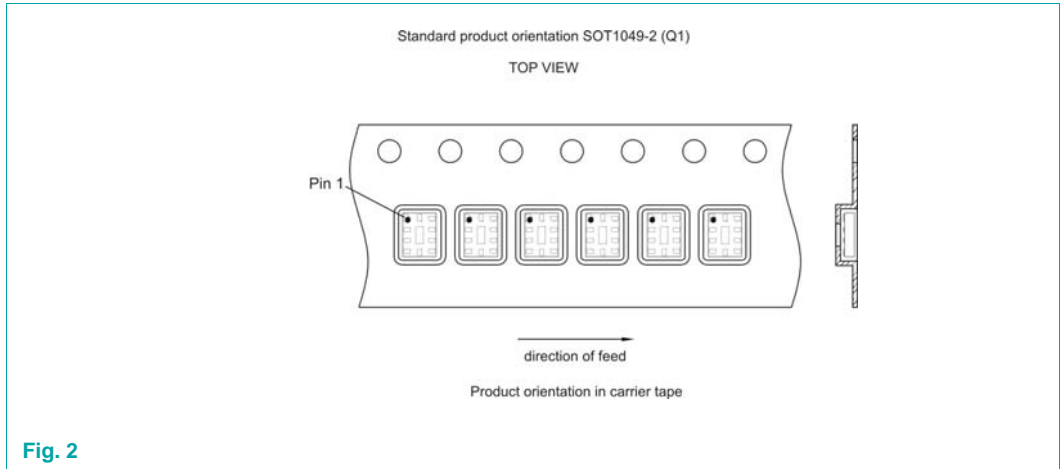


Package version	12NC ending	Reel dimensions d x w (mm)	SPQ/PQ (pcs)	Reels per box	Outer box dimensions l x w x h (mm)
SOT1049-2	115	180 x 8	5000	1	185 x 185 x 14

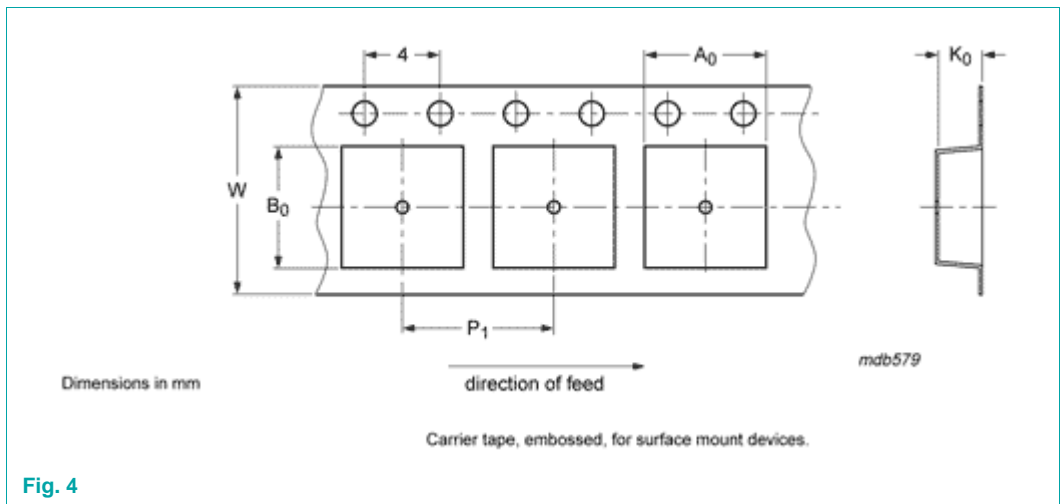


2. Product orientation

2.1 12NC ending 115



3. Carrier tape dimensions



12NC ending	A <sub>0</sub> (mm)	B <sub>0</sub> (mm)	K <sub>0</sub> (mm)	T (mm)	P <sub>1</sub> (mm)	W (mm)
115	1.85	2.35	0.70	-	4.0	8

4. Carrier tape dimensions

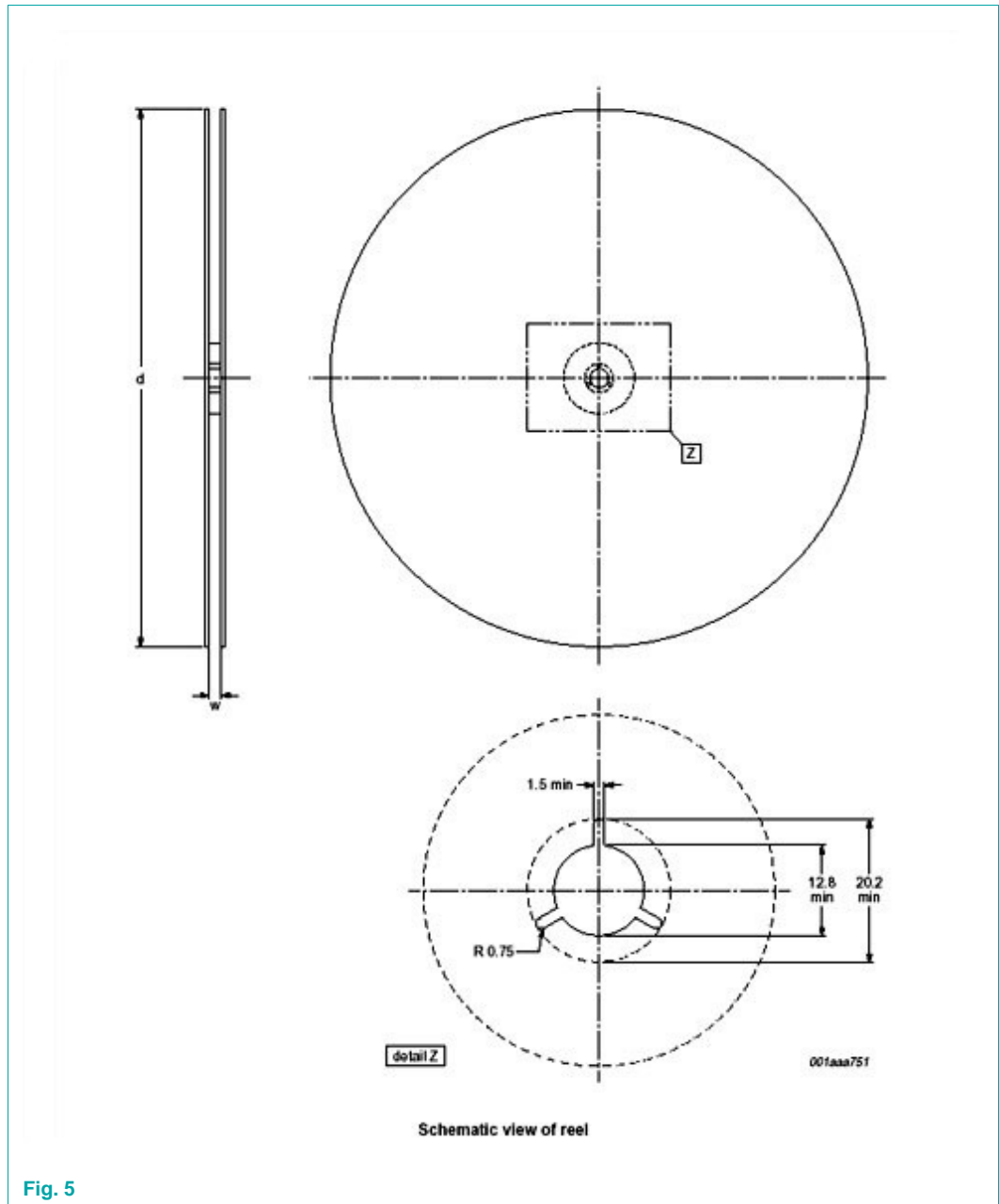


Fig. 5

Package version	12NC ending	Reel dimensions d x w (mm)	SPQ/PQ (pcs)
SOT1049-2	115	180 x 8	5000

5. Barcode label tape and box information

5.1 Box information

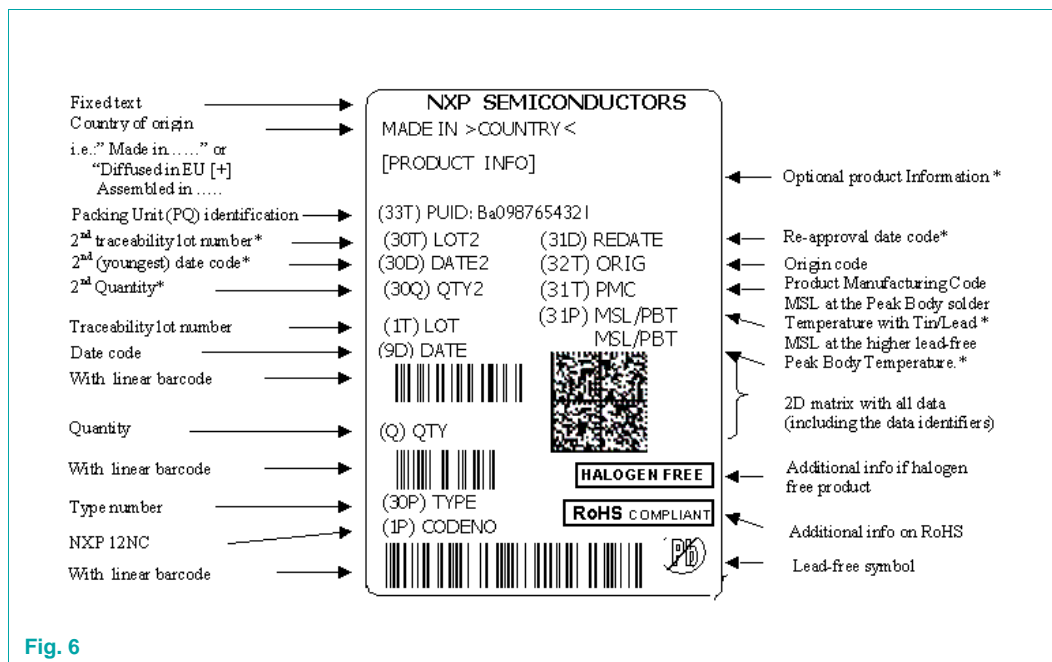


Fig. 6

<b>Label dimensions</b>
<b>l x w (mm)</b>
100 x 75