

UCODE 8 Auburn certified RFID inlays



<https://rfid.auburn.edu/documents/>

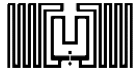
<https://rfid.auburn.edu/temp/suppliers.php/>

**38 different designs based on UCODE 8 are certified
within the Auburn ARC program.**

The following pages show the certified inlays, sorted by size – smallest dimension first

UCODE 8 Auburn certified RAIN RFID inlays

SML,GB19U8 29x15



Q

Checkpoint, Jewel, U8, 30x15



Q,

Smartrac Accessory, U8 30x15



Q

Boingtech, 1020600, 40x15



A,B,C,D,G,M,Q

Avery Dennison, AD-324u8, 41.4x16

FCC



A,B, ,D,F,G,M,Q,W2,W5

Avery Dennison, AD-324u8, 41.4x16

ETSI



K

SML, GB4U8, 42x16



A,B,C,D,F,G,M,N,Q,W2,W5

Smartrac, Miniweb UCODE 8, 42x16

FCC



A,B,D,G,M,Q,W2,W5

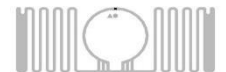
Smartrac, Miniweb, UCODE 8, 42x16

ETSI



I,K

Checkpoint, Vortex UCODE 8, 42x16



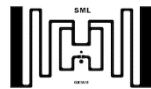
A,B,C,D,G,K,Q

TAGEOS, EOS 241 U8 , 42x16



A,B,C,D,F,G,M,N,Q

SML, GB5U8, 42x24



A,B,C,D,F,G,I,K,M,Q,W2,W5

Avery Dennison, AD-310u8, 41.4x29



A,B,C,D,F,G,I,K,M,Q,W2,W5

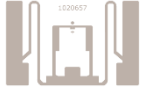
Smartrac Eagle Green, U8 42x28



A,B,C,D,F,G,I,K,M,Q,W2,W5

UCODE 8 Auburn certified RAIN RFID inlays

Boingtech, 1020657 43x28



A,B,C,D,F,G,I,K,M,Q,W2,W5

Smartrac, Eagle, UCODE 8, 44x28



A,B,C,D,F,G,I,K,M,Q,W2,W5

Avery Dennison, AD-372u8, 53x19



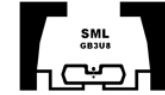
A,B,C,D,F,G,K,N,Q,W5

Smartrac, NXP UCODE 8, Web, 50x30



A,B,C,D,F,G,I,K,M,N,Q,W1,W2,W3,
W4,W5

SML, GB3U8, 50x30



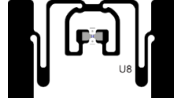
A,B,C,D,F,G,I,K,M,N,Q,W1,W2,W3,
W4,W5

Boingtech, 1020546, 50x30



A,B,C,D,F,G,I,K,M,N,Q,W1,W2,W3,
W4,W5

Avery Dennison, AD385u8, 50x30



A,B,C,D,F,G,I,K,M,N,Q,W1,W2,W3,
W4,W5

SML, Maze U8, 68x14



A,B,C,D,F,G,I,K,M,N,Q,W1,W2,W3,
W4,W5

SML, GB14U8, 70x6



A,B,C,D,G,,M,Q

Boingtech, 1020660, 71x8
















A,B,C,D,F,G,I,K,M,N,Q,W1,W2,W3,
W4,W5

TAGEOS, EOS 430 U8 71x8



A,B,C,D,F,G,I,K,M,N,Q

UCODE 8 Auburn certified RAIN RFID inlays

| | | | | |
|---|---|--|--|--|
| <p>Smartrac, NXP UCODE 8, Belt, 70x14</p>  <p>A,B,C,D,F,G,I,K,M,N,Q,W1,W2,W3,W4,W5</p> | <p>Avery Dennison, AD238u8, 70x14.5</p>  <p>A,B,C,D,F,G,I,K,M,N,Q,W1,W2,W3,W4,W5</p> | <p>Checkpoint, Triumph U8, 70x14</p>  <p>A,B,C,D,F,G,I,K,M,N,Q,W1,W2,W3,W4,W5</p> | <p>Boingtech, 1020573, 72x12</p>  <p>A,B,C,D,F,G,I,K,M,N,Q,W1,W2,W3,W4,W5</p> | |
| <p>Zebra CBR 4000 U8 91x35</p>  <p>A,B,C,D,F,G,I,K,L,M,N,Q,U</p> | <p>Avery Dennison, AD-553u8, 76x38</p>  <p>U</p> | <p>Smartrac, Wings, UCODE 8, 72x30</p>  <p>U</p> | <p>SML, GB18U8, 76x34</p>  <p>A,B,C,D,F,G,I,K,M,N,Q,U</p> | <p>TAGEOS, EOS 409 U8 70x30</p>  <p>A, B,C,D,G, I, K, M,Q,U</p> |
| <p>Avery Dennison, AD350u8, 76x6</p>  <p>A, B,C,D,I,K,N,Q</p> | <p>Checkpoint, Kona U8, 80x7</p>  <p>A,B,C,D,F,G,I,K,L,M,N,Q,W1,W2,W3,W4,W5</p> | <p>Zebra CBR 2000 U8 95x8</p>  <p>A,B,C,D,F,G,I,K,L,M,N,Q</p> | <p>Avery Dennison, AD-600u8, 90x57.5</p>  <p>T</p> | |