



Document can be found at <http://freescale.com/rf/models>
Go to Models/Agilent EEsof ADS for Agilent's ADS v2004a,
Release Notes and Installation Instructions

Agilent's Advanced Design System RF High Power Products Design Kit Release v2004ap0105

Release Notes and Installation Instructions



Table of Contents

I.	INTRODUCTION	1
II.	RELEASE NOTES	2
	A. TECHINCLUDE ELEMENT	2
	B. PARTS ADDED TO THE (V2004AP0105) LIBRARY	2
	<i>LDMOS Discrete Parts</i>	2
	C. CANCELLED PARTS	3
III.	FORWARD MIGRATION OF THE RF LDMOS MODEL LIBRARY COMPONENTS	5
IV.	DESIGN KIT INSTALLATION (V2004AP0105)	6
	A. DOWNLOAD DESIGN KIT	6
	B. INSTALL DESIGN KIT	6
	1. <i>Choose DesignKit > Install Design Kit from the ADS Main Window.</i>	6
	2. <i>UnZip the Downloaded ADS Design Kit Zip File.</i>	7
	3. <i>Define the Design Kit.</i>	8
	4. <i>Install the Design Kit.</i>	8
	C. VERIFY YOUR DESIGN KIT INSTALLATION	9
	D. LIST DESIGN KITS IN USE AND ENABLED AT EACH LEVEL	10
V.	REMOVING DESIGN KITS IN ADS V2004A	10
VI.	CUSTOMER PROJECT INSTALLATION	11
	A. ADS v2004A USERS: INSTALLING THE CUSTOMER_ADS_PRJ DIRECTORY	11
	1. <i>ADS v2004a Unix Users.</i>	11
	2. <i>ADS v2004a PC and Linux Users</i>	12
	B. USING THE CUSTOMER_ADS_PRJ PROJECT DIRECTORY	12
	1. <i>Selecting a New MET LDMOS Product Model.</i>	13
	2. <i>Selecting a Root Product Model.</i>	14
	3. <i>Simulating Product Models Correctly.</i>	15
VII.	TROUBLESHOOTING ADS INSTALLATION PROBLEMS	16
VIII.	KNOWN PROBLEMS	17
IX.	SUPPORT	17
X.	APPENDIX — FORWARD MIGRATION OF THE RF LDMOS MODEL LIBRARY COMPONENTS	18
	1. <i>Integrating v2004ap0105 Parts into an existing ADS design (Migration Plan)</i>	18
	2. <i>Creating a new project (Non-Migration)</i>	18

I. INTRODUCTION

This current release of the RF High Power Products Design Kit for ADS v2004a has been implemented as follows:

- The Library is implemented as an Agilent® EEsof® EDA Advanced Design System (ADS) Design Kit and should be installed according to Agilent's instructions on installing Design Kits.
- There is now only one Zip file for all of the major platforms that Freescale Semiconductor supports (Microsoft® Windows® 2000, XP, Solaris® 8/9, HP-UX® 11.0/11.11i) and Red Hat® Linux® 7.2/7.3/8.0. This is because ADS v2004a now allows the use of dynamically linked or shared-object libraries for distribution of user-compiled models. We are no longer required to provide a new simulator executable for each computing platform.
- The Design Kit was implemented per Agilent's instructions contained in the *Design Kit Development Manual* (dated September 2004). Therefore, the structure of our library has been modified per Agilent's requirements so that Agilent can help support installation and simulation issues in the future. Because of this modification, we must now use a new element called *TechInclude* (see “Release Notes, TechInclude Element” in this document). The *TechInclude* element is now required on all top-level schematics for simulation purposes.
- The Library release includes the following:
 - Addition of lower thermal resistance package “H” models
 - The latest release is compatible with previous library releases.
 - MRF6P21190H and MRF28* models have been updated.
 - New MRF6S21140H model

The Freescale Semiconductor RF Modeling Team highly recommends that you read through this document thoroughly to enable a smooth installation and transition to the new release.

II. RELEASE NOTES

A. TechInclude Element

Because of the change from a totally customized library to an ADS Design Kit, a TechInclude element is now required. For this and future releases, you must insert the FSL_Tech_Include element at the top-level of all designs where simulation is performed. ADS only allows you to place one TechInclude element on any one design. If you do not place the TechInclude element at the top-level or if you place it within a subcircuit, a simulation error will occur. For example:

```
Error detected by HPEESOFsim during netlist parsing
`MRF1` is an instance of an undefined element ...
```

The FSL_Tech_Include element is now the sixth element in the Freescale Semiconductor RF High Power Model Library palette and looks like the following when placed in a schematic:



For more examples of using the TechInclude element, download the Customer Example Project from the Freescale Semiconductor RF High Power Model Library website at <http://www.freescale.com/rf/models>. Go to Agilent EESOF's ADS. Right-click on the Agilent ADS v2004a Example Project hyperlink to download the example project.

B. Parts Added to the (v2004ap0105) Library

The following table contains (1) new parts and (2) parts migrated to the new lower thermal resistance "H" packages that have been added to the RF High Power Products Design Kit v2004ap0105 release.

LDMOS Discrete Parts

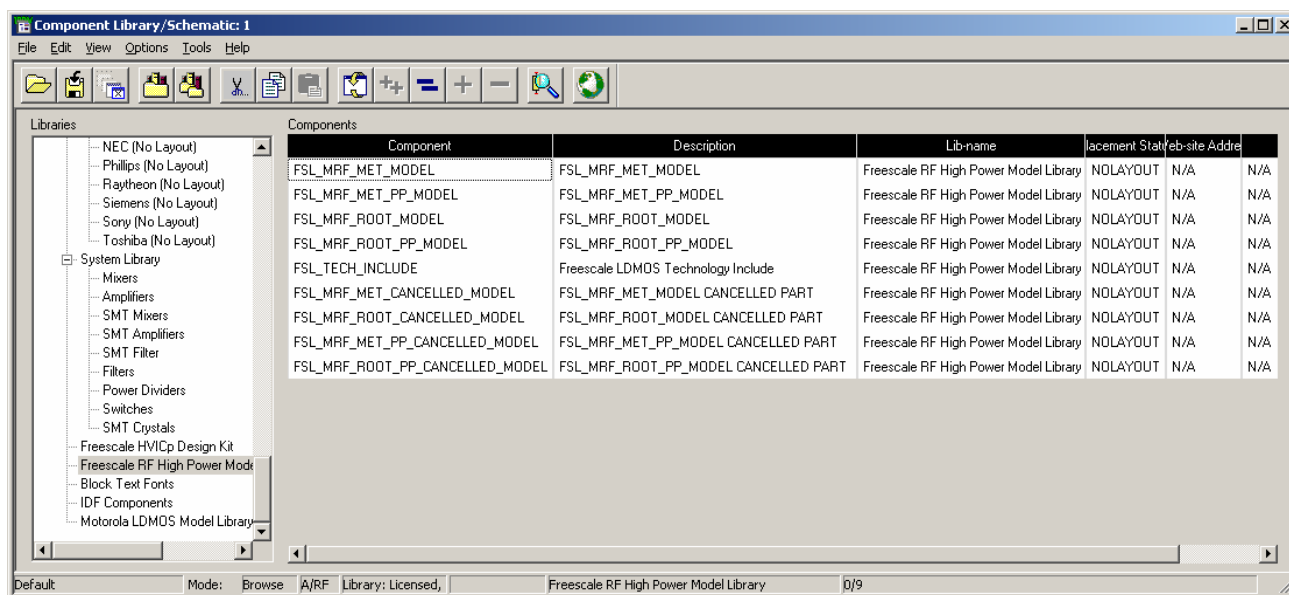
New Lower Thermal Resistance Models		New Models
MRF377H	MRF5S21100H	MRF6S21140H
MRF5S19090H	MRF5S21130H	
MRF5S19100H	MRF5S21150H	
MRF5S19130H	MRF5P20180H	
MRF5S19150H	MRF5P21180H	
MRF5S21090H		

C. Cancelled Parts

The following parts have been labeled as cancelled in the design kit or have been migrated to the new Lower Resistance thermal packages*:

MET Models	Root Models
MRF182, MRF182S	MRF182, MRF182S
MRF183, MRF183S	MRF183, MRF183S
MRF185	MRF184, MRF184S
MRF9180S	MRF185, MRF186
MRF18090AS	MRF187, MRF187S
MRF19120S	MRF286, MRF286S
MRF19125S	MRF9180S
MRF21120S	MRF18090AS
MRF21180S	MRF19120S
MRF5S19090*	MRF19125S
MRF5S19100*	MRF21120S
MRF5S19130*	MRF21180S
MRF5S19150*	MRF6522_10R1
MRF5S21080*	MRF6522_5R1
MRF5S21090*	MRF6525_10R1
MRF5S21100*	MRF6525_5R1
MRF5S21130*	MRF5S19090*
MRF5S21150*	MRF5S19100*
MRF5P20180*	MRF5S19130*
MRF5P21180*	MRF5S19150*
	MRF5S21080*
	MRF5S21090*
	MRF5S21100*
	MRF5S21130*
	MRF5S21150*
	MRF5P20180*
	MRF5P21180*

If any of these part names are referenced in existing designs and need to be used, you will need to replace FSL_MRF_MET_MODEL/FSL_MRF_ROOT_MODEL elements with FSL_MRF_MET_CANCELLED_MODEL/FSL_MRF_ROOT_CANCELLED_MODEL elements, along with the FSL_MRF_MET_PP_MODEL/FSL_MRF_ROOT_PP_MODEL elements with FSL_MRF_MET_PP_CANCELLED_MODEL/FSL_MRF_ROOT_PP_CANCELLED_MODEL. The “Cancelled” version of these parts can *only* be found in the Component Library Browser under the Library heading, Freescale RF High Power Model Library.



III. FORWARD MIGRATION OF THE RF LDMOS MODEL LIBRARY COMPONENTS

Previous versions of the RF LDMOS Model libraries can co-exist with version v2003cp0704 and version v2004ap0105 of the RF LDMOS Model library. The v2003cp0704 and v2004ap0105 versions of the library have their own unique TechInclude along with its own MET and ROOT model components. It is this uniqueness that allows the libraries to co-exist and permit a seamless integration of new parts into an existing design or project.

Detailed instructions for setting up the new v2004ap0105 Design Kit to co-exist with a previous version (before v2003cp0704) is located in the [APPENDIX](#). Read the steps carefully before attempting the integration of any design projects.

IV. DESIGN KIT INSTALLATION (v2004ap0105)

A. Download Design Kit

This section outlines the procedures necessary to install the new RF High Power Products Design Kit (v2004ap0105) into ADS v2004a.

Before you can install the Design Kit, you must first go to the Freescale Semiconductor RF High Power Model website at <http://freescale.com/rf/models>. Click Agilent's ADS v2004a Library Release Notes and Installation Instructions, and download the ADS_FSL_LIBRARY_v2004ap0105.zip file by right-clicking on the file link and performing a Save Link/Target As to save the file to your desktop.

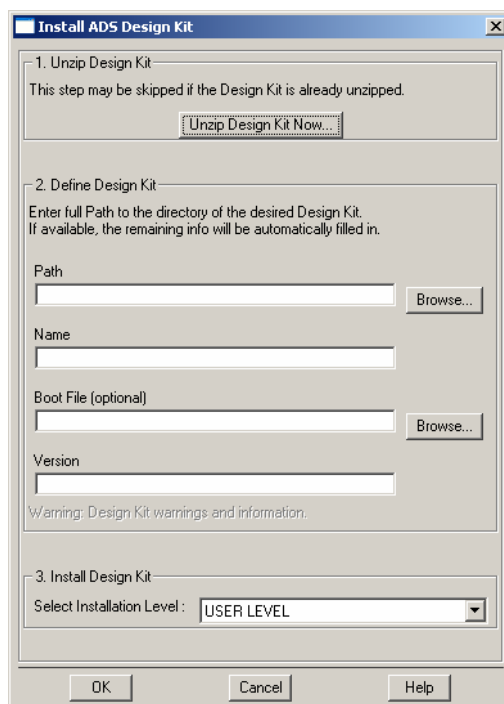
Next, follow the steps below to install the Library and verify your successful installation. If you are having problems with the installation, you can view the *Design Kit Installation and Setup Manual* (dated September 2004) for ADS v2004a in the ADS v2004a documentation (specifically, page 2-5). To install the Library successfully, go to the "Support" section of this document for information on how to get support from the Freescale Semiconductor RF Modeling Team or from Agilent.

The following steps assume you currently have ADS v2004a correctly installed and that you have root or administrative access to your ADS installation. If the previous library is installed, please read the Appendix, Forward Migration of the RF LDMOS Model Library Components, then refer to Section V, Removing Design Kits in the ADSv2004a before continuing to Step B, Install Design Kit.

B. Install Design Kit

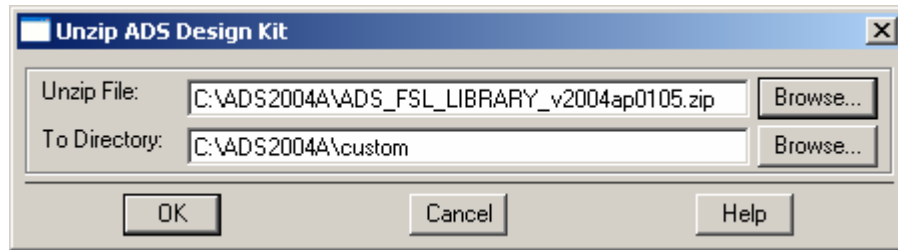
1. Choose DesignKit > Install Design Kit from the ADS Main Window.

The following dialog box will appear:



2. UnZip the Downloaded ADS Design Kit Zip File.

Click the **Unzip Design Kit Now** button. The following dialog box will appear:



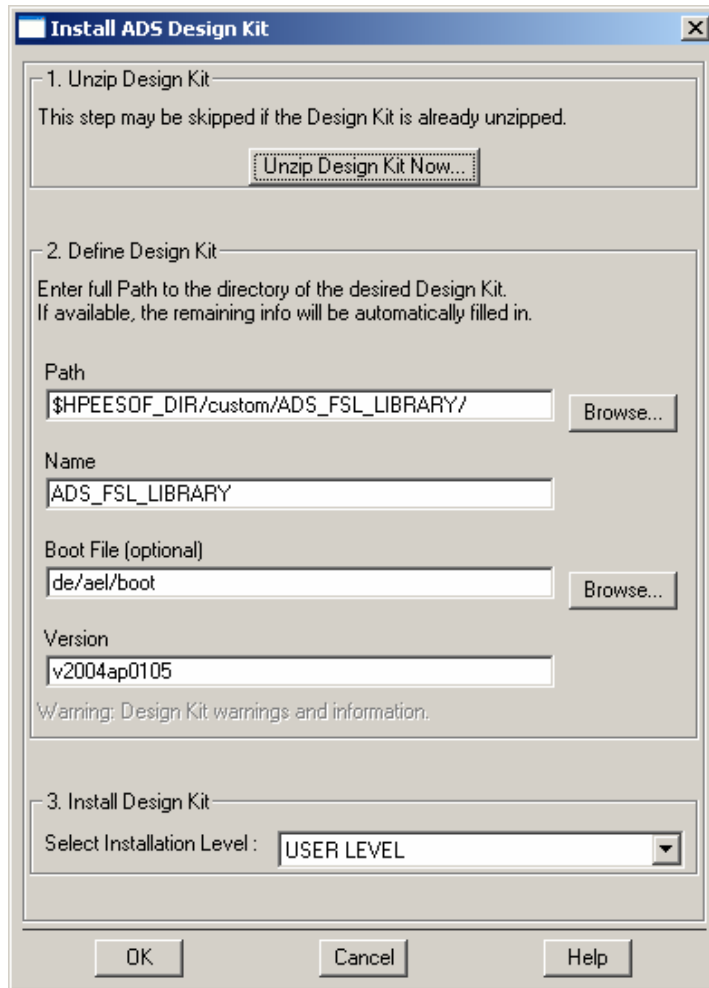
Enter the path to the Zip file. Enter the path for the **To Directory** field where you want the Design Kit to be located. Use the **Browse** buttons to help you locate the Zip file and To Directory locations. In the preceding example, the default ADS Custom directory was selected for a Site-Wide installation. (This path is highly suggested, but optional.)

Click **OK**. A new directory called ADS_FSL_LIBRARY will appear within the directory path that you specified in the **To Directory** field. Within this new directory, you should see the following subdirectories:

- circuit
- de
- design_kit
- doc
- examples
- bin

3. Define the Design Kit.

When the Unzip procedure is complete, the following Install ADS Design Kit dialog box will reappear with default values specified for Path, Name, Boot File and Version:



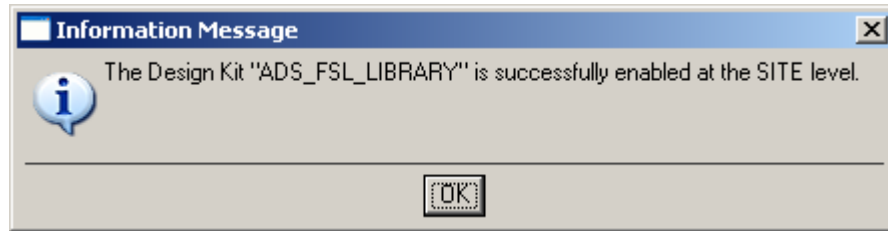
It is not necessary for you to manipulate any of the default values unless you want to perform some extra customization.

Note: Extra customization is not recommended.

4. Install the Design Kit.

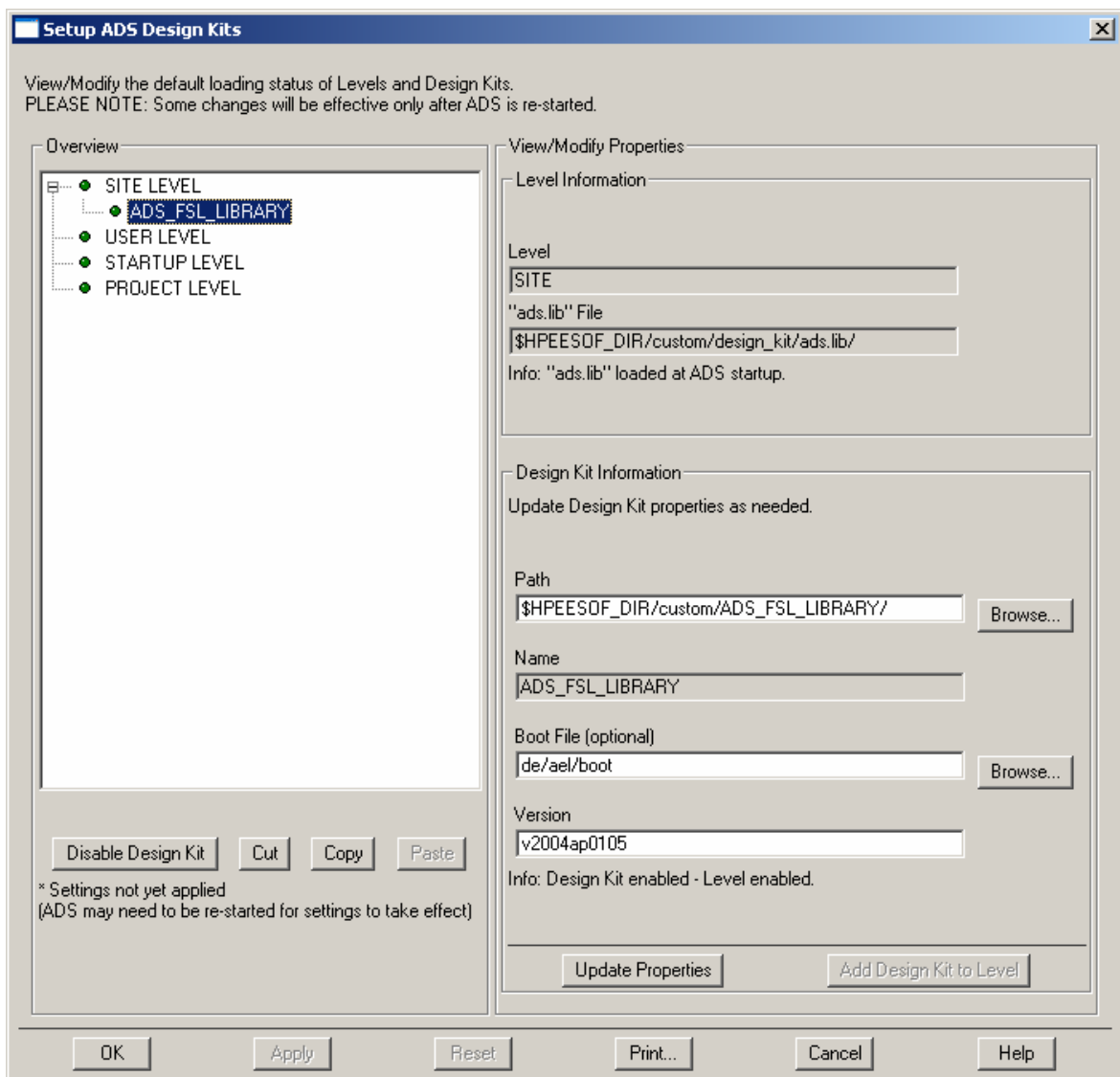
You will need to make a choice within the **Select Installation Level** field. In the example above, the Site Level or Site-Wide installation was selected because the Design Kit was Unzipped and installed in the ADS Custom directory. You can select “SITE LEVEL,” “USER LEVEL,” “STARTUP LEVEL” or “PROJECT LEVEL.” Review the *Design Kit Installation and Setup Manual* (page 2-14) and decide how the Design Kit will be used. We suggest that it be placed as a SITE LEVEL installation. After you make your selection, click **OK**.

If the installation was successful, the following dialog box will appear:



C. Verify Your Design Kit Installation

To verify your Design Kit Installation, choose **DesignKit > Setup Design Kits** from the main window. The following dialog box will appear:

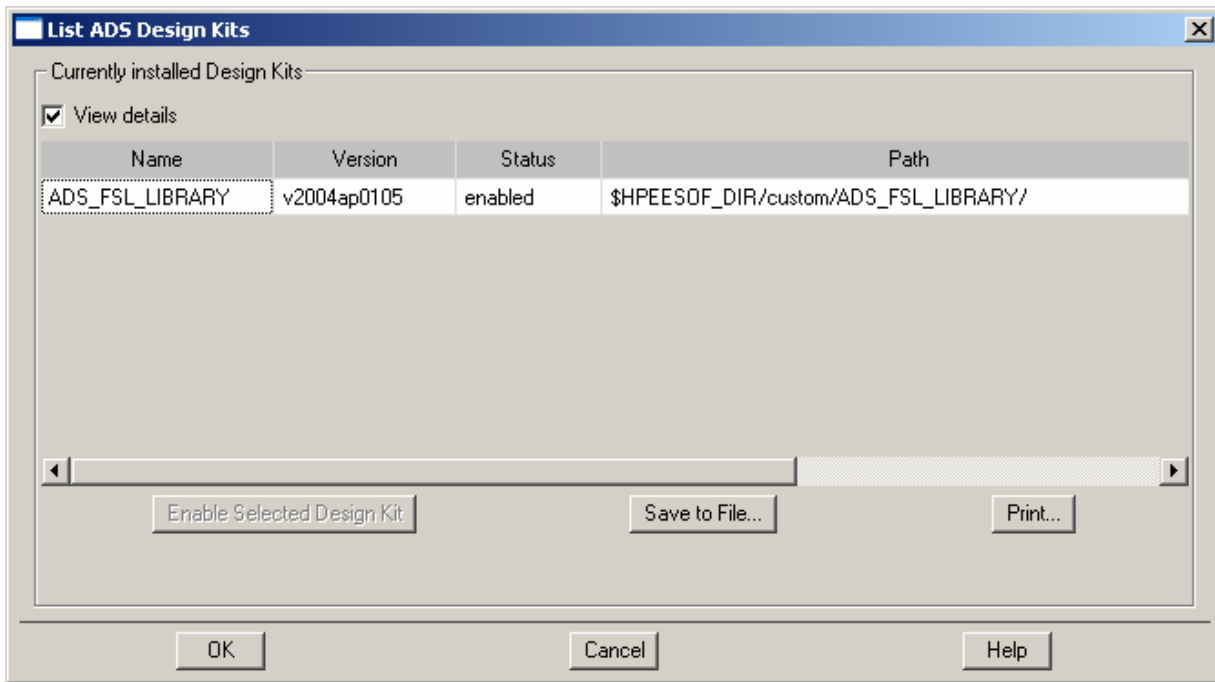


Click on **ADS_FSL_LIBRARY Design Kit** (it will be a subentry of the level where it was installed) to verify the installation paths, names, version, etc.

WARNING: Typically, the SITE LEVEL is disabled (yellow button beside SITE LEVEL). If you installed the Design Kit at the SITE LEVEL, you must enable the SITE LEVEL by clicking **SITE LEVEL** and choosing **Enable Level**. Click **OK** to enable Design Kits within this level.

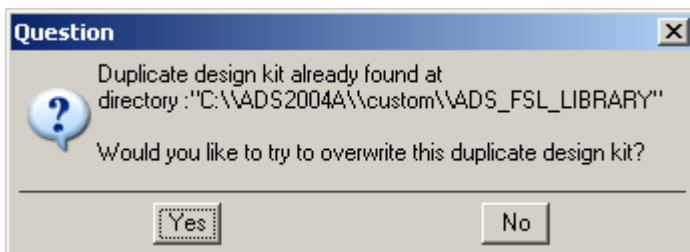
D. List Design Kits in Use and Enabled at Each Level

Choose **DesignKit > List Design Kits ...** to view these Design Kits. The following dialog box appears:



V. REMOVING DESIGN KITS IN ADS V2004A

Agilent has provided a path for users to update existing Design Kits. When using the **Unzip Design Kit Now...** function button from the **Install ADS Design Kit** menu, the following dialog box will appear. Selecting **Yes** will overwrite the existing Design Kit with the updated version.



VI. CUSTOMER PROJECT INSTALLATION

The custom project can be installed on all major platforms that support Microsoft Windows (Win32), Sun Microsystems (Solaris), Hewlett-Packard (HP-UX), and Red Hat Linux environments.

A. ADS v2004a Users: Installing the customer_ads_prj directory

Before you can install the Customer Example project directory, you must first go to the Freescale Semiconductor RF LDMOS website (<http://freescale.com/rf/models>). Go to Agilent EESOF's ADS. Right-click on the Agilent ADS v2004a Example Project hyperlink to download the customer_ads_v2004ap0105_prj.Zip file. Select Save Link/Target As to save the file to your desktop.

1. ADS v2004a Unix Users

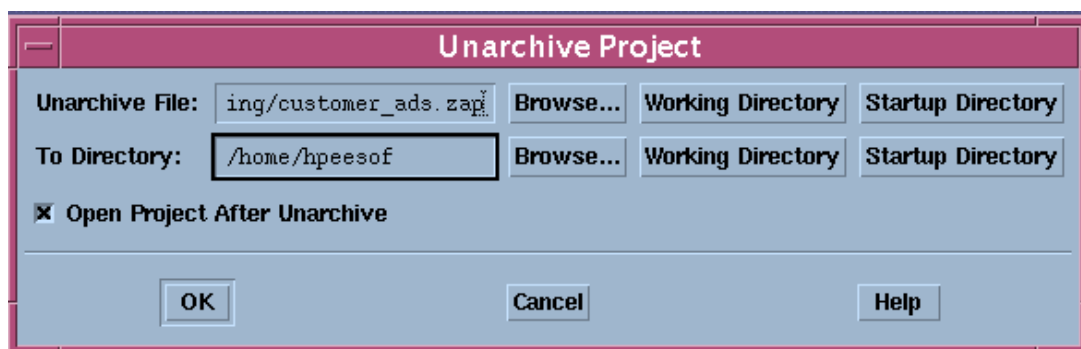
- a) Download the customer_ads_v2004ap0105_prj.zip file.
- b) UnZip the downloaded file by using ADS's Unzip utility found in the bin directory of the ADS installation directory. For example, from a Unix csh shell command prompt:

```
setenv HPEESOF_DIR /rf/apps/ads/2004a
$HPEESOF_DIR/bin/unzip customer_ads_v2004ap0105_prj.zip
  Archive:  customer_ads_v2004ap0105_prj.zip
    inflating: customer_ads.zap
```

This creates a file in an ADS zap archive file called:

customer_ads.zap

- c) Open ADS. From the File menu, select **Unarchive Project...** to unzip the directory.



- d) The new project directory is called customer_ads_prj.

The directory is just like any other ADS project directory and is ready to use. Choose **Open Project** from the File directory to open this project.

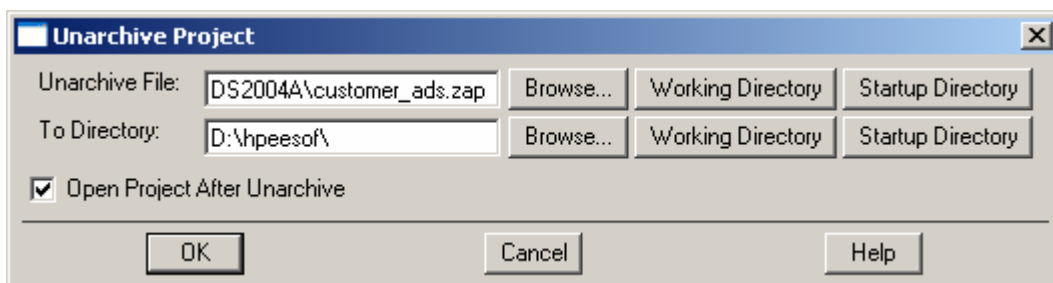
2. ADS v2004a PC and Linux Users

- a) Download the customer_ads_v2004ap0105_prj.zip file.
- b) UnZip the downloaded file by using ADS's Unzip utility found in the bin directory of the ADS installation directory. For example, from a DOS prompt:

```
set HPEESOF_DIR=C:\ads2004a
%HPEESOF_DIR%\bin\unzip customer_ads_v2004ap0105_prj.zip
Archive: customer_ads_v2004ap0105_prj.zip
  inflating: customer_ads.zap
```

The result is an ADS zap archive file called customer_ads.zap.

- c) Open ADS v2004a. From the File menu, select **Unarchive Project...** to unzip the directory.



- d) The new project directory is called customer_ads_prj.

The directory is just like any other ADS project directory and is ready to use. Choose **Open Project** from the File directory to open this project.

B. Using the customer_ads_prj Project Directory

The following instructions assume that you are using ADS v2004a for Unix or PC and currently have the customer_ads_prj project already open. A schematic file called Base_Model.dsn is used as device under test (DUT), within all of the example test schematics (at the lowest subcircuit level, see Figure 1) except for the Main_Transient, Main_1HB_Loadpull and Main_2HB_Loadpull designs. Therefore, it is easy to replace the current product model by editing the FET element and selecting a new model from the list. You can also replace the MET LDMOS model with a Root LDMOS model from the Freescale RF High Power Model Library palette and select the appropriate model from the list given.

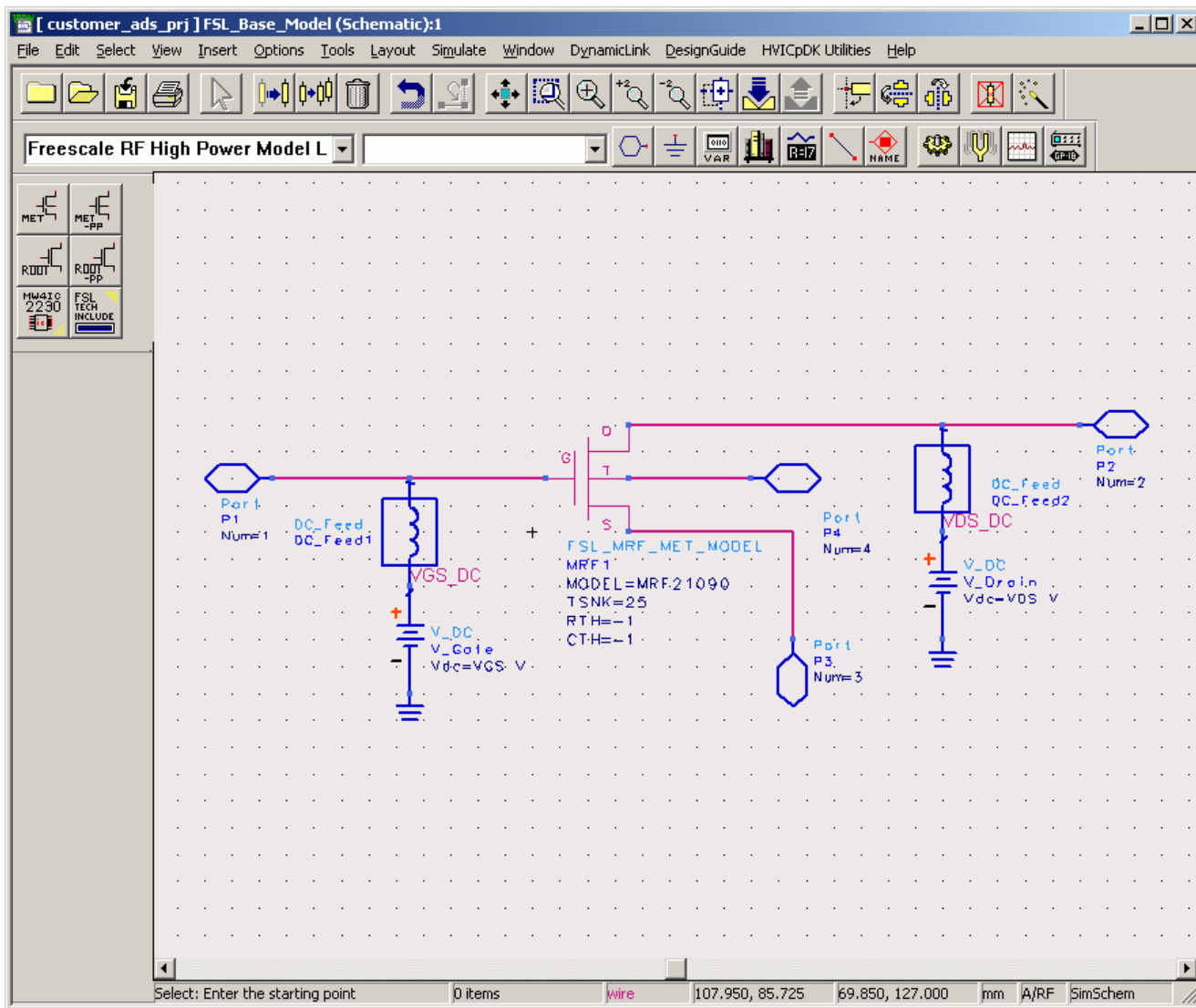


Figure 1. Schematic of FSL_Base_Model.dsn

Notice that Base_Model has as its parameters $TSNK$, RTH , CTH , VDS and VGS . Therefore, any test circuit that uses Base_Model as its DUT is able to pass thermal parameters to the MET LDMOS model as well as bias information.

Note: Keep these parameters in mind when replacing the given MET LDMOS model with another MET or Root LDMOS model. Setting $TSNK$, RTH and CTH to a value of -1 tells the simulator to use the default value of the model.

1. Selecting a New MET LDMOS Product Model.

A Library and Palette Group — the Freescale RF High Power Model Library — has been created with all of the current product models. Select a model type by clicking the **Component Library** icon and then clicking **Freescale RF High Power Model Library**.

There are four model types:

- FSL_MRF_MET_MODEL—MET LDMOS Model
- FSL_MRF_MET_PP_MODEL—MET LDMOS Push-Pull Model
- FSL_MRF_ROOT_MODEL—Root LDMOS Model
- FSL_MRF_ROOT_PP_MODEL—Root LDMOS Push-Pull Model

Figure 2 illustrates how to edit the current FSL_MRF_MET_MODEL and select a new product model to simulate inside the Base_Model design.

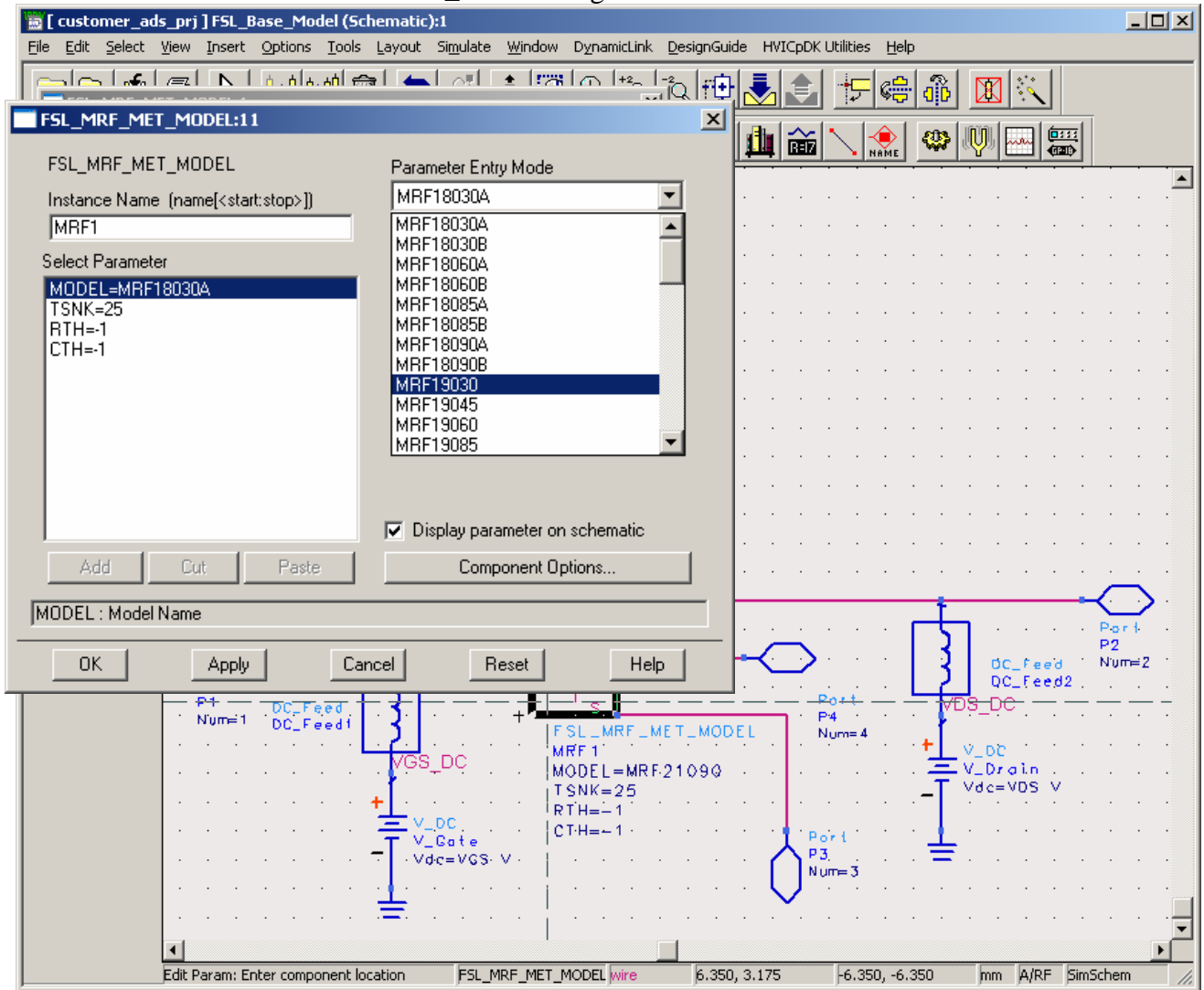


Figure 2. Selecting a New MET LDMOS Product Model

2. Selecting a Root Product Model.

The preceding procedure can also be used to select a Root LDMOS model from the palette or library group and replace the present FSL_MRF_MET_MODEL element. Because the Root model has no temperature component, the Fourth Node of Base_Model remains unconnected. However, this is not a problem when simulating. The parameters of Base_Model, TSNK, RTH and CTH do not affect the circuit when the Root LDMOS model is used.

Figure 3 shows how to replace the FSL_MRF_MET_MODEL with a new FSL_MRF_ROOT_MODEL and how to edit and select a new product model from the list given.

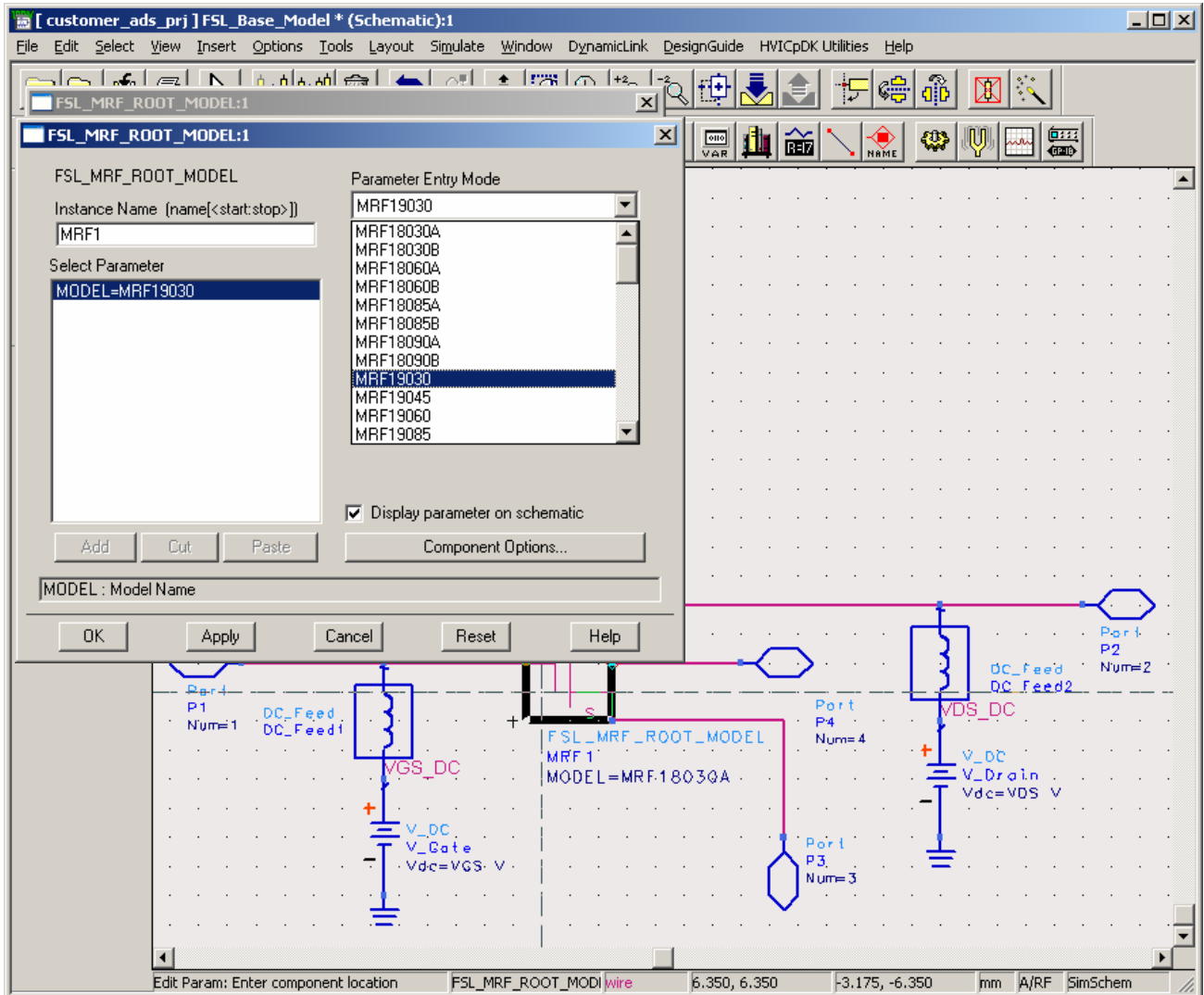


Figure 3. Selecting and Editing Choice of the FSL_MRF_ROOT_MODEL

3. Simulating Product Models Correctly.

As stated previously, the Base_Model.dsn schematic is the DUT for all of the example test schematic designs except for the Main_Transient, Main_1HB_Loadpull and Main_2HB_Loadpull designs. By following the preceding procedure for selecting the desired product model, each example test circuit is ready to simulate. Before performing a simulation, however, be sure to adjust the frequency, bias and power stimulus controls for your desired test setup. The VAR block in each test bench may also contain some variables that affect the test setup and may also need to be modified.

Note: The new FSL_TECH_INCLUDE element has to be placed at all top-level simulation schematics, which is now a requirement of the new Design Kit structure.

VII. TROUBLESHOOTING ADS INSTALLATION PROBLEMS

Please verify that the LDMOS Model Design Kit Library was installed correctly by going through the installation procedures outlined in this document before trying to troubleshoot problems.

Following is table of common problems and solutions to help you complete your installation if you are having problems.

Problem	Possible Solution
<p>Under Unix, when starting ADS following the installation, the messages Loading Freescale Semiconductor's ADSv2004ap0105 RF High Power Model Library ... Freescale Semiconductor's ADSv2004ap0105 RF High Power Model Library Load Complete! do not appear upon startup.</p> <p>Under PC or Unix, after ADS is open, the Freescale RF High Power Model Library does not appear in the schematic palette or within the Component Library Browser window.</p> <p>Under PC or Unix, the Freescale RF High Power Model Library palette exists within the schematic window. However, when picking and placing an element, I get several message windows saying that the component symbol is not found.</p>	<ol style="list-style-type: none"> 1. Check that the ADS_FSL_LIBRARY directory and all of its subdirectories are present in the ADS Custom directory. 2. Verify that you are running ADS v2004a. 3. Verify that the design_kit directory exists within the Custom directory and that the ads.lib file exists and is similar to the file shown in the footnote below.
<p>Under PC or Unix, the Freescale RF High Power Model Library palette exists within the schematic window, and I can pick and place model parts to the schematic. However, when I try to simulate, I get the following simulation error messages within the simulator window: Warning detected by HPEESOF SIM during netlist parsing. Error detected by HPEESOF SIM during netlist parsing 'MRF1' is an instance of an undefined model ...'</p> <p>Under PC or Unix, the Freescale RF High Power Model Library palette exists within the schematic window, and I can pick and place model parts to the schematic. However, when I try to simulate, a window pops up indicating OPEN_SIMULATOR ERROR.</p>	<ol style="list-style-type: none"> 1. Verify that the FSL_TECH_INCLUDE element exists in your top-level circuit that you are trying to simulate. 2. Check that the ADS_FSL_LIBRARY directory and all of its subdirectories are present in the ADS Custom directory. 3. Verify that you are running ADS v2004a. 4. Verify that the design_kit directory exists within the Custom directory and that the ads.lib file exists and is similar to the file shown in the footnote below. 5. If ADS 2004a was installed after the Freescale RF High Power Model Library was installed, the Freescale RF High Power Model Library must be re-installed.
<p>Under PC or Unix, I have done everything above, and nothing seems to have an effect. The Freescale Semiconductor RF High Power Model Library does not load at all or partially loads with errors.</p>	<ol style="list-style-type: none"> 1. Verify that all references to the ADS_FSL_LIBRARY environmental variable have been removed from your ADS startup wrapper script. 2. If all else fails, see the "Support" section in this document about starting a Customer Service Request or contacting Agilent.

* Example ads.lib file contained within the ADS v2004a custom/design_kit directory:

ADS_FSL_LIBRARY | \$HPEESOF_DIR/custom/ADS_FSL_LIBRARY | de/acl/boot.atf | v2004ap0105

VIII. KNOWN PROBLEMS

The following are known problems associated with the MET LDMOS model. This section will be updated regularly, as new problems are discovered and resolved. If you find a problem with the MET LDMOS, do not hesitate to let the Freescale Semiconductor RF Modeling Team know. We will do our best to solve all problems or supply workarounds in a timely manner.

ADS v2004a

1. The model may experience some convergence problems under two-tone conditions for some specific values of IF (f_2-f_1) impedance terminations. Problems have been experienced when the IF termination is close to an open (high impedance) condition.
2. Even though all of the different simulation types have been coded in the senior modules (linear, nonlinear, AC, noise and transient), the noise section of the code has not been tested.
3. Simulator convergence issues have been noticed by some customers using Harmonic Balance simulations (LSSP, HB1Tone, HB2Tone, etc.) with ideal 50 ohm terminations on the input and output. Because of the low input and output impedances of some devices, it is suggested that lower input and output impedance terminations, around 5 ohms, be used to eliminate convergence problems.

IX. SUPPORT

If you have difficulties installing or using the RF High Power Products Design Kit, please feel free to contact the Freescale Semiconductor RF Modeling Team by selecting **RF LDMOS Model Help** from the Freescale Semiconductor RF High Power Models web page (<http://freescale.com/rf/models>). Follow the procedure for submitting a Customer Service Request. We will be glad to contact you and help you with your problems.

If you feel the problem is with your ADS v2004a installation, please contact Agilent EESof directly at 1-800-hpeesof (1-800-473-3763).

X. APPENDIX — FORWARD MIGRATION OF THE RF LDMOS MODEL LIBRARY COMPONENTS

Previous versions of the RF LDMOS Model libraries can co-exist with the new v2004ap0105 version of the RF LDMOS Model library. The v2004ap0105 library has its own unique TechInclude along with its own MET and ROOT model components. It is this uniqueness that allows the libraries to co-exist and permit a seamless integration of new parts into an existing design or project. Be sure to read the warning below before proceeding into the migration process.

If you have designs in ADS projects using a previous release of the RF LDMOS model library, DO NOT remove the TechInclude which was created with the previous library. The RF Modeling Team RECOMMENDS: create a copy of your existing ADS project BEFORE migrating or adding the new library components to the project. Always keep the previous library release available for backward compatibility until all components have been migrated.

ADS projects will need to have the previous release RF LDMOS Model library TechInclude element as well as the new FSL_TECH_INCLUDE TechInclude element for simulations to run properly. The new library components will be able to reside in an ADS project created with the previous library release and allow migrating new components into existing designs. New projects will require the new TechInclude element at the top-level of each design.

1. Integrating v2004ap0105 Parts into an existing ADS design (Migration Plan)

- a) Verify the previous version of the RF LDMOS Model library is currently enabled.
- b) Install v2004ap0105 RF High Power Model library following the steps in Section III.
- c) Open an existing ADS Project.
- d) Place the FSL_TECH_INCLUDE component at the top-level of the design.
Note: There should now be two TechInclude components in the design.
- e) Go to Step g for placing new components; otherwise, continue to Step f.
- f) Delete an existing component (if replacement with a new component is desired).
- g) Select the desired MET or ROOT component from the ADS device palette.
- h) Place the component.
- i) Select Model Name from the form pulldown menu (Parameter Entry Mode).
- j) Save the design.

2. Creating a new project (Non-Migration)

- a) Disable or remove the previous RF LDMOS Model library, see Section IV for details.
- b) Install v2004ap0105 RF LDMOS Model library following the steps in Section III.
- c) Select New Project.
- d) Place the FSL_TECH_INCLUDE component at the top-level of the design.
- e) Select the desired MET or ROOT component from the ADS device palette.
- f) Place the component.
- g) Select Model Name from the form pulldown menu (Parameter Entry Mode).
- h) Save the design.

How to Reach Us:

Home Page:

www.freescale.com

E-mail:

support@freescale.com

USA/Europe or Locations Not Listed:

Freescale Semiconductor
Technical Information Center, CH370
1300 N. Alma School Road
Chandler, Arizona 85224
+1-800-521-6274 or +1-480-768-2130
support@freescale.com

Europe, Middle East, and Africa:

Freescale Halbleiter Deutschland GmbH
Technical Information Center
Schatzbogen 7
81829 Muenchen, Germany
+44 1296 380 456 (English)
+46 8 52200080 (English)
+49 89 92103 559 (German)
+33 1 69 35 48 48 (French)
support@freescale.com

Japan:

Freescale Semiconductor Japan Ltd.
Headquarters
ARCO Tower 15F
1-8-1, Shimo-Meguro, Meguro-ku,
Tokyo 153-0064, Japan
0120 191014 or +81 3 5437 9125
support.japan@freescale.com

Asia/Pacific:

Freescale Semiconductor Hong Kong Ltd.
Technical Information Center
2 Dai King Street
Tai Po Industrial Estate
Tai Po, N.T., Hong Kong
+800 2666 8080
support.asia@freescale.com

For Literature Requests Only:

Freescale Semiconductor Literature Distribution Center
P.O. Box 5405
Denver, Colorado 80217
1-800-441-2447 or 303-675-2140
Fax: 303-675-2150
LDCForFreescaleSemiconductor@hibbertgroup.com

Information in this document is provided solely to enable system and software implementers to use Freescale Semiconductor products. There are no express or implied copyright licenses granted hereunder to design or fabricate any integrated circuits or integrated circuits based on the information in this document.

Freescale Semiconductor reserves the right to make changes without further notice to any products herein. Freescale Semiconductor makes no warranty, representation or guarantee regarding the suitability of its products for any particular purpose, nor does Freescale Semiconductor assume any liability arising out of the application or use of any product or circuit, and specifically disclaims any and all liability, including without limitation consequential or incidental damages. "Typical" parameters that may be provided in Freescale Semiconductor data sheets and/or specifications can and do vary in different applications and actual performance may vary over time. All operating parameters, including "Typicals", must be validated for each customer application by customer's technical experts. Freescale Semiconductor does not convey any license under its patent rights nor the rights of others. Freescale Semiconductor products are not designed, intended, or authorized for use as components in systems intended for surgical implant into the body, or other applications intended to support or sustain life, or for any other application in which the failure of the Freescale Semiconductor product could create a situation where personal injury or death may occur. Should Buyer purchase or use Freescale Semiconductor products for any such unintended or unauthorized application, Buyer shall indemnify and hold Freescale Semiconductor and its officers, employees, subsidiaries, affiliates, and distributors harmless against all claims, costs, damages, and expenses, and reasonable attorney fees arising out of, directly or indirectly, any claim of personal injury or death associated with such unintended or unauthorized use, even if such claim alleges that Freescale Semiconductor was negligent regarding the design or manufacture of the part.



Freescale™ and the Freescale logo are trademarks of Freescale Semiconductor, Inc. All other product or service names are the property of their respective owners.

© Freescale Semiconductor, Inc. 2005. All rights reserved.