
i.MX28 SDK

Windows Embedded CE 6.0

Multimedia Framework

User's Guide

Document Number: 924-76409
Rev. 2010.08
08/2010

How to Reach Us:

Home Page:

www.freescale.com

Web Support:

<http://www.freescale.com/support>

USA/Europe or Locations Not Listed:

Freescale Semiconductor
Technical Information Center, EL516
2100 East Elliot Road
Tempe, Arizona 85284
+1-800-521-6274 or +1-480-768-2130
www.freescale.com/support

Europe, Middle East, and Africa:

Freescale Halbleiter Deutschland GmbH
Technical Information Center
Schatzbogen 7
81829 Muenchen, Germany
+44 1296 380 456 (English)
+46 8 52200080 (English)
+49 89 92103 559 (German)
+33 1 69 35 48 48 (French)
www.freescale.com/support

Japan:

Freescale Semiconductor Japan Ltd.
Headquarters
ARCO Tower 15F
1-8-1, Shimo-Meguro, Meguro-ku,
Tokyo 153-0064, Japan
0120 191014 or +81 3 5437 9125
support.japan@freescale.com

Asia/Pacific:

Freescale Semiconductor China Ltd.
Exchange Building 23F
No. 118 Jianguo Road
Chaoyang District
Beijing 100022
China
+86 010 5879 8000
support.asia@freescale.com

For Literature Requests Only:

Freescale Semiconductor Literature Distribution Center
P.O. Box 5405
Denver, Colorado 80217
1-800-441-2447 or 303-675-2140
Fax: 303-675-2150
LDCForFreescaleSemiconductor@hibbertgroup.com

Information in this document is provided solely to enable system and software implementers to use Freescale Semiconductor products. There are no express or implied copyright licenses granted hereunder to design or fabricate any integrated circuits or integrated circuits based on the information in this document.

Freescale Semiconductor reserves the right to make changes without further notice to any products herein. Freescale Semiconductor makes no warranty, representation or guarantee regarding the suitability of its products for any particular purpose, nor does Freescale Semiconductor assume any liability arising out of the application or use of any product or circuit, and specifically disclaims any and all liability, including without limitation consequential or incidental damages. "Typical" parameters that may be provided in Freescale Semiconductor data sheets and/or specifications can and do vary in different applications and actual performance may vary over time. All operating parameters, including "Typicals", must be validated for each customer application by customer's technical experts. Freescale Semiconductor does not convey any license under its patent rights nor the rights of others. Freescale Semiconductor products are not designed, intended, or authorized for use as components in systems intended for surgical implant into the body, or other applications intended to support or sustain life, or for any other application in which the failure of the Freescale Semiconductor product could create a situation where personal injury or death may occur. Should Buyer purchase or use Freescale Semiconductor products for any such unintended or unauthorized application, Buyer shall indemnify and hold Freescale Semiconductor and its officers, employees, subsidiaries, affiliates, and distributors harmless against all claims, costs, damages, and expenses, and reasonable attorney fees arising out of, directly or indirectly, any claim of personal injury or death associated with such unintended or unauthorized use, even if such claim alleges that Freescale Semiconductor was negligent regarding the design or manufacture of the part.

Freescale™ and the Freescale logo are trademarks of Freescale Semiconductor, Inc. All other product or service names are the property of their respective owners.

© Freescale Semiconductor, Inc. 2010. All rights reserved.

Contents

About This Book	iv
Audience	iv
Organization.....	iv
Conventions	iv
References.....	iv
 Chapter 1 Installation.....	 1
1.1 Installing the BSP.....	1
1.2 Installing the SDK.....	2
1.2.1 Checking the Installation	6
1.2.1.1 Check the SDK folder in the BSP code tree	6
1.2.1.2 Check the BSP modification performed by the installer.....	6
1.2.1.3 Check the workspace modified by the installer	7
1.2.2 Removing an Existing Installed SDK.....	7
 Chapter 2 Building OS Images	 9
2.1 Working with Multimedia Components	9
2.1.1 Importing the Windows Embedded CE 6.0 Catalog.....	9
2.1.2 Add/Remove components from Catalog.....	10
2.2 Building OS Images	10
2.2.1 Building an Image in Platform Builder.....	11
2.2.2 Building an Image using the Command Line.....	11
2.3 Building Multimedia Components in sample Workspace	11
2.3.1 Building all components simultaneously	11
2.3.2 Building individual components	11
 Chapter 3 Using the Test Procedures.....	 13
3.1 Audio Decoder Test	13
3.2 Video Decoder Test	13
 Patches and Fixes	 I
A.1 Video Memory Cache Policy	I

About This Book

This guide explains how to install, build, and execute Windows Embedded CE 6.0 OS images for the SDK board, using the Freescale i.MX28 SDK Windows CE Multimedia Framework Software Development Kit (SDK).

Audience

This document is intended for software, hardware, and system engineers who are planning to use the product and for anyone who wants to understand more about the product.

Organization

This document contains the following chapters.

- Chapter 1 Explains how to install/uninstall the SDK.
- Chapter 2 Explains how to build Windows CE OS images using the BSP.
- Chapter 3 Explains how to test the multimedia components that you install.

Conventions

This document uses the following conventions:

<i>Courier</i>	Is used to identify commands, explicit command parameters, code examples, expressions, data types, and directives.
<i>Italic</i>	Is used for emphasis, to identify new terms, and for replaceable command parameters.

References

The following documents were referenced to build this document.

1. Windows Embedded CE 6.0 BSP for i.MX28 EVK User's Guide

Chapter 1

Installation

The Freescale Multimedia Framework Software Development Kit (SDK) is a collection of binary, code, and support files that you can use to create Windows CE OS images for the i.MX28 EVK board. The SDK is distributed as a single archive EXE (.exe) file.

There are two steps to perform for the installation: first, install the i.MX28 EVK Board Support Package (BSP), and then install the SDK into the Windows CE source code tree and the Platform Builder development environment.

1.1 Installing the BSP

To install the BSP, follow the steps in Chapter 1 of the *Windows Embedded CE 6.0 BSP for i.MX28 EVK User's Guide*.

1.2 Installing the SDK

To install the SDK, use these steps:

NOTE

Before installing the SDK, save any modified files and close the sample workspace, because the Installer will modify the file of the sample workspace project.

1. Run the installation execution package.

The Setup Wizard screen is displayed (Figure 1-1).



Figure 1-1 Setup Screen

2. Click **Next**.

The Choose Components screen is displayed (Figure 1-2).

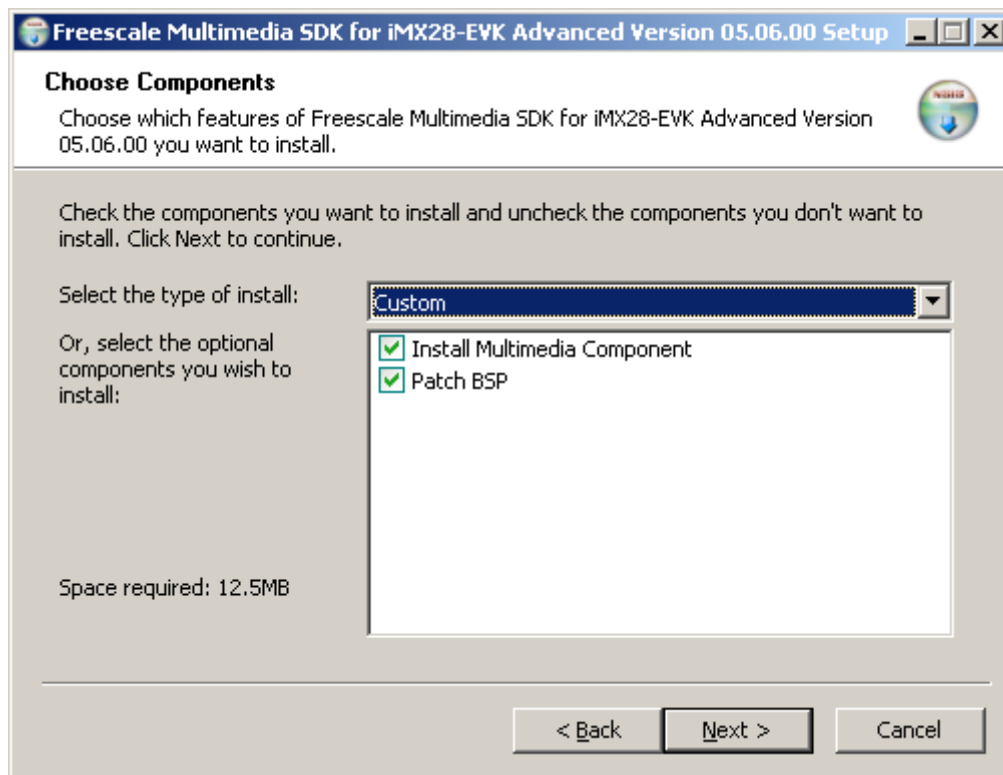


Figure 1-2 Choose Components

3. Click Next.

The installation location screen is displayed.

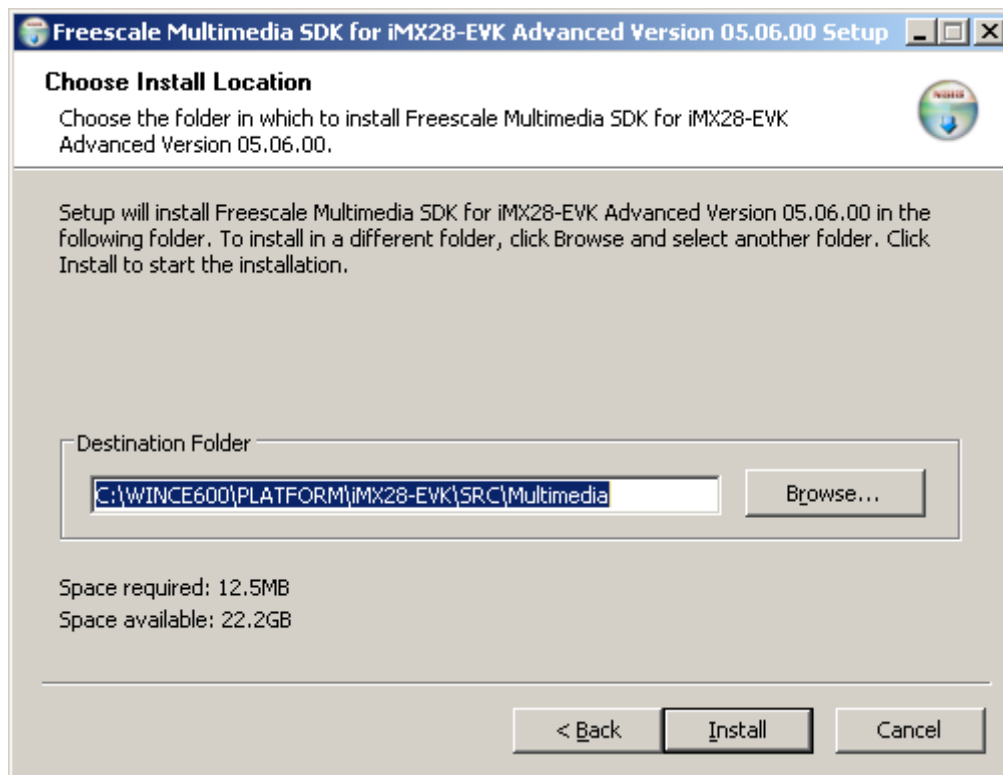


Figure 1-3 Selecting the Installation Location

4. Under Destination Folder, set the path of the destination folder for the SDK installation. By default, the multimedia framework SDK will be installed in the following path:
`"$(_WINCEROOT) \Platform \<platform_name> \src \Multimedia"`
 where:
 - `$(_WINCEROOT)` is the path of your Windows CE root folder – **WINCE600**
 - `<platform_name>` is the name of the SDK platform BSP directory – **iMX28-EVK** for i.MX28 EVK Windows Embedded CE 6.0 BSP
5. Continue with the installation wizard until the installation is complete.
6. In the final installation window (Figure 1-4) you can select whether to do a clean build for the Windows CE OS Image automatically.
 - If **Make Run-time Image (Nk.bin)** is selected, the entire image build procedure, which includes the CSP build, BSP build, and SYSGEN, will be implemented automatically.
 - During the automatic build, all of the FSL developed multimedia components are included in the OS Image by default.

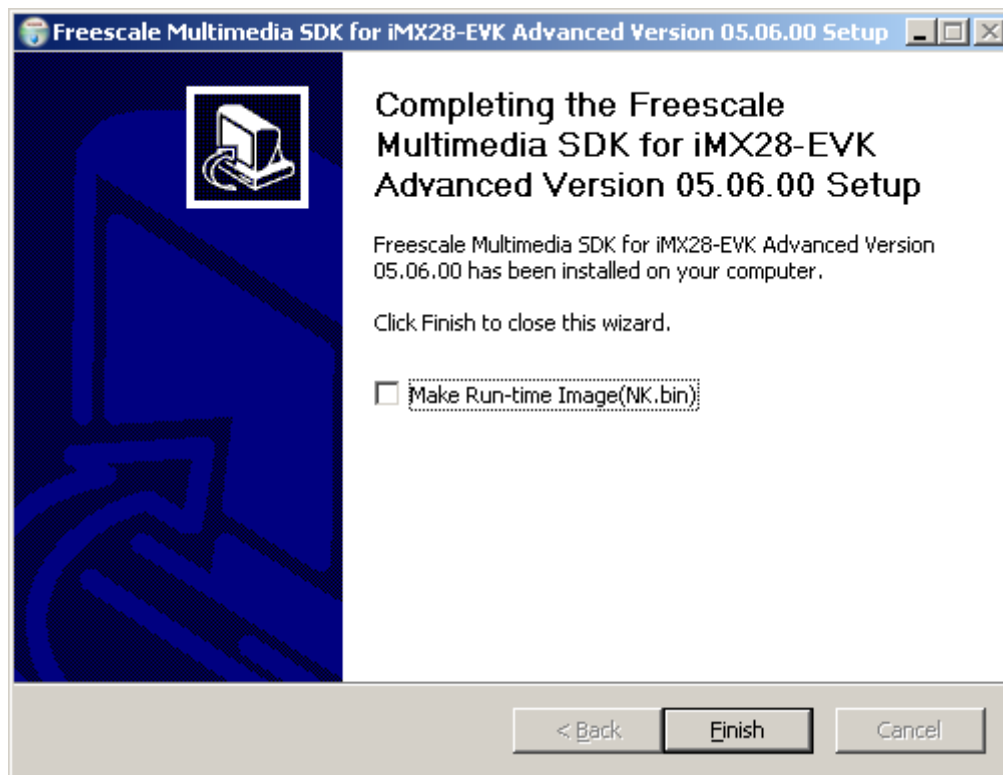


Figure 1-4 Setup Complete Screen

1.2.1 Checking the Installation

This section explains how to ensure that the multimedia framework SDK was installed successfully. The installer copies the Multimedia SDK folder into the BSP code tree:

- For Windows Embedded CE 6.0, the folder is copied to
`\WINCE600\platform\<platform>\src`

1.2.1.1 Check the SDK folder in the BSP code tree

The SDK code tree architecture is shown in Figure 1-5. The table that follows describes the folder contents.

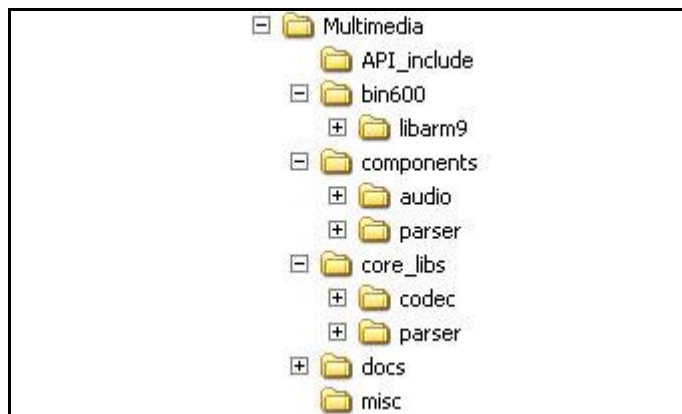


Figure 1-5 Multimedia SDK Code Tree Screen

Folder	Contents
API_include	This folder contains the global header files of multimedia DirectShow DMO and Filters.
components	This folder, with its audio, video, parser, and image subfolders, contains the DirectShow DMO and Filters source code of multimedia components.
core_libs	This folder contains header files and library binaries of multimedia components.
Docs	This folder contains API document, Datasheet and release notes of all of the components.
Misc	This folder contains the *.reg and *.bib file required by platform builder.
bin600	These folders contain DLL and EXE binaries, which are built by the components' source code.

1.2.1.2 Check the BSP modification performed by the installer

The SDK installer modifies the BSP to support the Freescale multimedia components.

To check the BSP modifications, use these steps:

1. In the **bsp_cfg.h** file under `$(_WINCEROOT) \platform \<platform> \src \inc \`, check that the line **BSP_VID_MEM_CACHE_WRITETHROUGH** has been defined as **TRUE**, as follows:

```
#define BSP_VID_MEM_CACHE_WRITETHROUGH TRUE
```

2. In the **platform.reg** file under `$(_WINCEROOT) \platform \<platform> \files \`, check the following line was added:

```
#include "$(_TARGETPLATROOT) \src \Multimedia \misc \fslmm_mx28.reg"
```

3. In the **platform.bib** file under `$(_WINCEROOT) \platform \<platform> \files \`, check that the following line was added:

```
#include "$(_TARGETPLATROOT) \src \Multimedia \misc \fslmm_mx28.bib"
```

1.2.1.3 Check the workspace modified by the installer

The SDK installer modifies the Platform Builder's workspace to support the Freescale multimedia components.

To check the workspace, use these steps:

1. In Platform Builder IDE, select menu **Project -> iMX28-EVK-Mobility Properties -> Configuration Properties -> Environment**, check the variables were added, as indicated
 - Added – variable **TGTARM** has been set to **arm9**
 - Added – variable **BSP_WATERMARK** has been set to **1**
2. In Catalog items View, check that the following DirectShow system components of the OS Build were added or removed, as indicated:
 - Added - all components in **Core OS > CEBASE > Graphics and Multimedia Technologies -> Media -> DirectShow**
 - Added - the component **Core OS > CEBASE > Graphics and Multimedia Technologies > Media > Media Formats > MPEG-1 Parser/Splitter**
 - Added - the component **Core OS > CEBASE > Graphics and Multimedia Technologies > Media > Media Format > AVI Filter**
 - Added - the component **Core OS > CEBASE > Graphics and Multimedia Technologies > Media > Audio Codecs and Renderers > Wave/AIFF/au/snd File Parser**

1.2.2 Removing an Existing Installed SDK

This section explains how to remove an installation of the SDK from the Windows CE source code tree and Platform Builder development environment.

NOTE

Before uninstalling the SDK, save any modified files that you want to keep to a protected location, because uninstalling the SDK will remove all files that were populated by the Installer.

To remove an SDK installation, use these steps:

1. Close Platform Builder.
2. Click **Start > Settings > Control Panel > Add or remove Programs**.

The Add or Remove Programs dialog is displayed.

3. Remove the SDK.
4. Manually remove the remaining SDK files and directories.

```
$(_WINCEROOT)\Platform\<platform_name>\src\Multimedia
```

Chapter 2

Building OS Images

After completing the SDK installation, you can use the sample workspace to build a Windows CE OS Image based on the installed SDK. You may add or remove image build components.

2.1 Working with Multimedia Components

The multimedia components are located in the Windows Catalog. You import the catalog, and can then add the components to the OS Image build.

2.1.1 Importing the Windows Embedded CE 6.0 Catalog

For Windows Embedded CE 6.0, the multimedia catalog is automatically imported when the sample workspace is opened.

To view the catalog, use these steps:

1. Click **View > Other Windows > Catalog Items View**.

The Catalog Items View dialog is displayed (Figure 2-1).

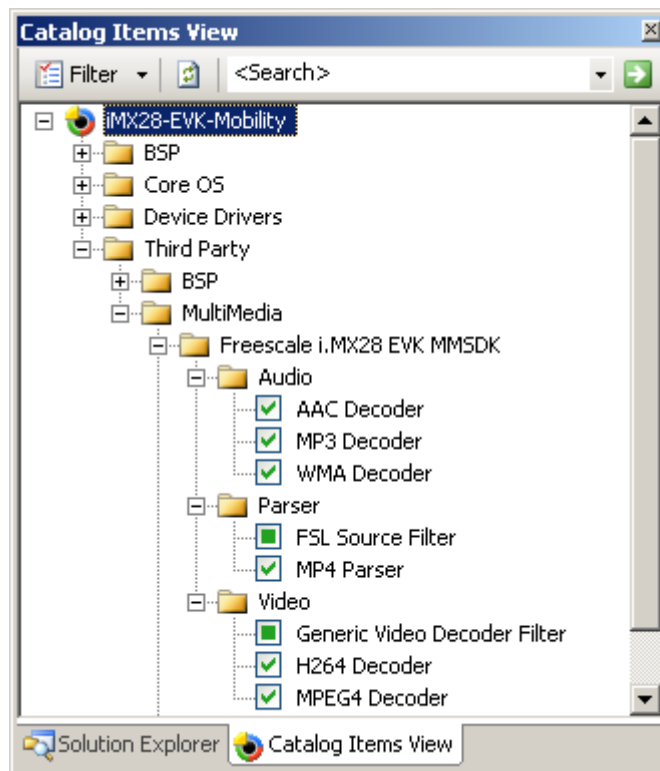


Figure 2-1 Multimedia SDK Catalog View

2. To view the multimedia components, open **Third Party > Multimedia > Freescale i.MX28 EVK MMSDK**.

2.1.2 Add/Remove components from Catalog

To add/remove components from the catalog, use these steps:

1. Click View > Other Windows > Catalog Items View.
2. To view the multimedia components, open **Third Party > Multimedia > Freescale i.MX28 EVK MMSDK**.
3. To add/remove a multimedia component, just select/unselect the associated check box.

2.2 Building OS Images

This section explains how to build Windows CE OS image included multimedia components in the sample workspace.

2.2.1 Building an Image in Platform Builder

For instructions for building OS images using Platform Builder, see the *Windows Embedded CE 6.0 BSP for i.MX28 EVK User's Guide*.

2.2.2 Building an Image using the Command Line

The SDK installation provides the `fsl_mmfwk_build.bat` script, which builds the OS image. You can run this script during the last installation step or in the command line after installation.

To run the script in the command line, follow these steps:

1. Open the command console on your PC.
2. Go to the `$(_WINCEROOT)\platform\<platform>\src\Multimedia\` directory.
3. Run `fsl_mmfwk_build.bat`.

2.3 Building Multimedia Components in sample Workspace

This section explains how to build/rebuild installed multimedia components after the SDK upgrading or the modification on multimedia components' source code.

2.3.1 Building all components simultaneously

To build all of the installed components at once, use these steps:

1. Go to the Solution Explorer View, and then open the **Multimedia** project in the folder **Platform > iMX28-EVK > SRC**.
2. Right-click on the **Multimedia** project, and then select **Rebuild**.

This builds all DLL and EXE binaries in the `bin600` directories under the Multimedia folder in the BSP code tree.

2.3.2 Building individual components

To build individual components, use these steps:

1. In the project window, open the individual component subproject in the **Multimedia** project
2. Right-click an individual component's sub-project, and then select **Rebuild**

This builds the DLL and EXE binaries in the `bin600` directories under the Multimedia folder in the BSP code tree.

Chapter 3

Using the Test Procedures

This chapter explains how to test the Freescale multimedia components in the Windows CE OS. The image was built as described in chapter 2.

3.1 Audio Decoder Test

To perform this test, use the Windows CE Media Player to playback the audio files.

3.2 Video Decoder Test

To perform this test, use the Windows CE Media Player to playback the video files.

Patches and Fixes

Upon installation, Freescale patches are automatically installed. However, you may also install the patches manually, if you prefer to confirm that they are installed.

A.1 Video Memory Cache Policy

Applies to: Windows Embedded CE 6.0

About: The Freescale video decoder requires that the cache policy of the video memory (IPU buffer) be write-through. Performance issues will occur with non-cacheable or write-back memory.

Action: Before you build the BSP, double check the following:

1. Open the `bsp_cfg.h` file in the following directory
 `\WINCE600\PLATFORM\<platform>\src\inc\`
2. In the file, **BSP_VID_MEM_CACHE_WRITETHROUGH** should be **TRUE**, as shown:

```
#define BSP_VID_MEM_CACHE_WRITETHROUGH TRUE
```