

# Installation of ADS SiMKit startup script and designkit on Windows for SiMKit version 5.9

## Introduction

This document explains how to prepare Windows environment for ADS simulations with SiMKit. This includes the creation of a ADS SiMKit startup script in such a way that simulations for ADS are enabled with SiMKit. After this, ADS can be started through the ADS SiMKit startup script and the installation of the SiMKit designkit can be done.

In this document 'simdir' refers to the location of installation of SiMKit (for example 'simdir'=C:\Keysight).

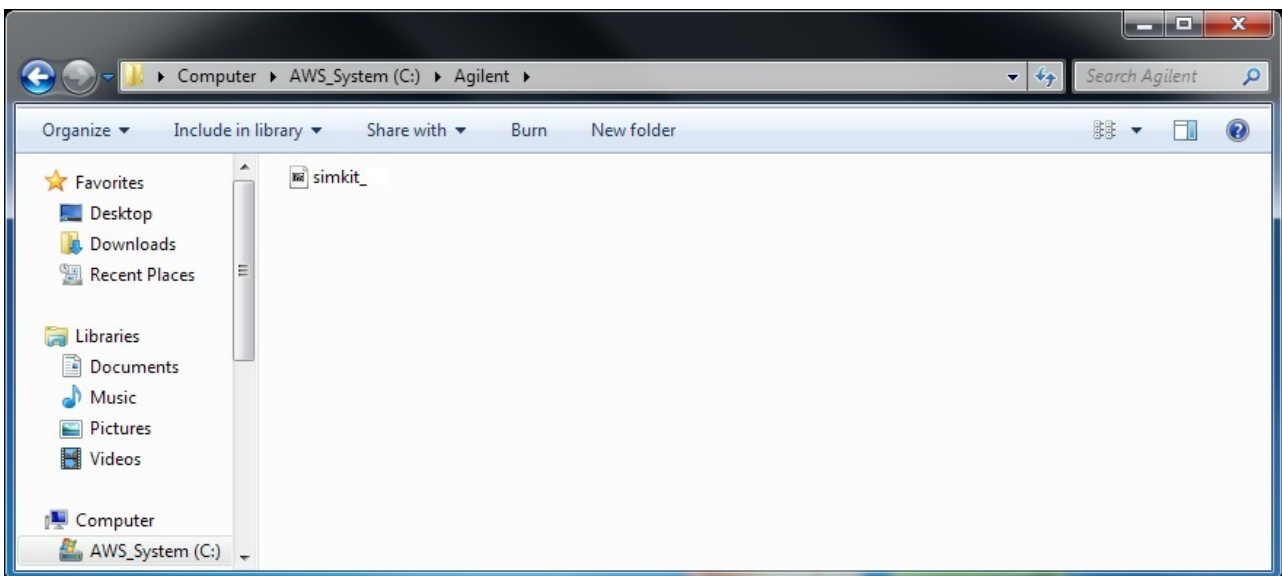
The ADS 2012, 2014, 2015, 2016, 2017 and 2019 versions all use the version 4 of the MINT interface. ADS 2019.1 and higher use version 5 of the MINT interface. The method used to connect SiMKit to ADS is the same for all ADS versions.

---

## ADS 2012 and higher

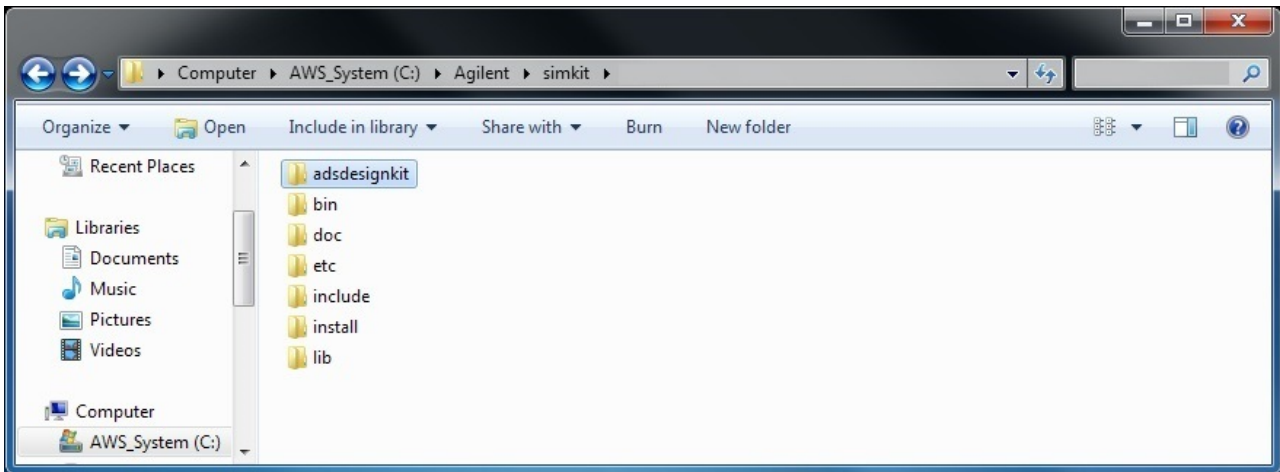
### Extract the SiMKit compressed file

Copy the zip file 'simkit\_5.9\_designkit.zip' to a desired location ('simdir'):



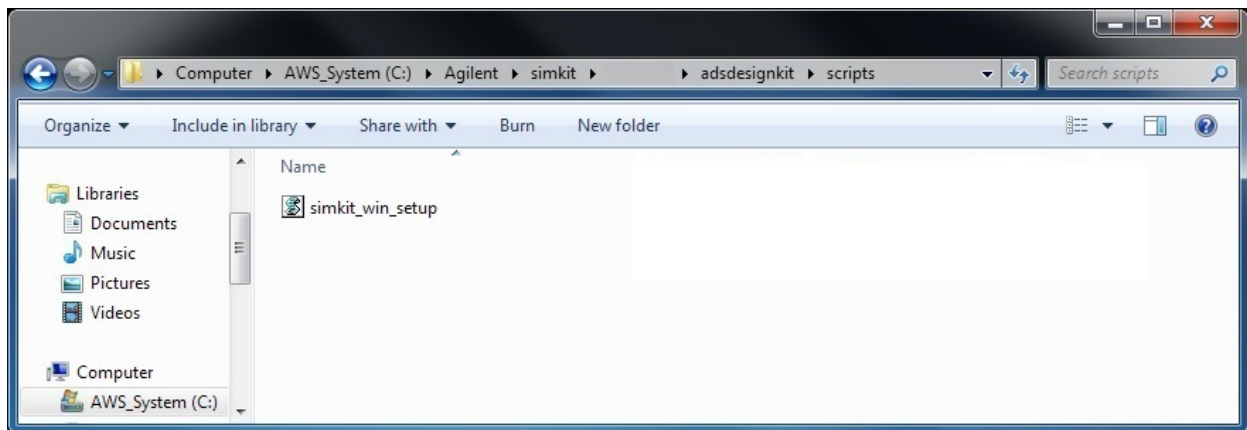
Extract the 'simkit\_5.9\_designkit.zip' file at this location: this extraction will create 'simdir\simkit\5.9'.

Go into the new directory 'simdir\simkit\5.9', which results in the following view:



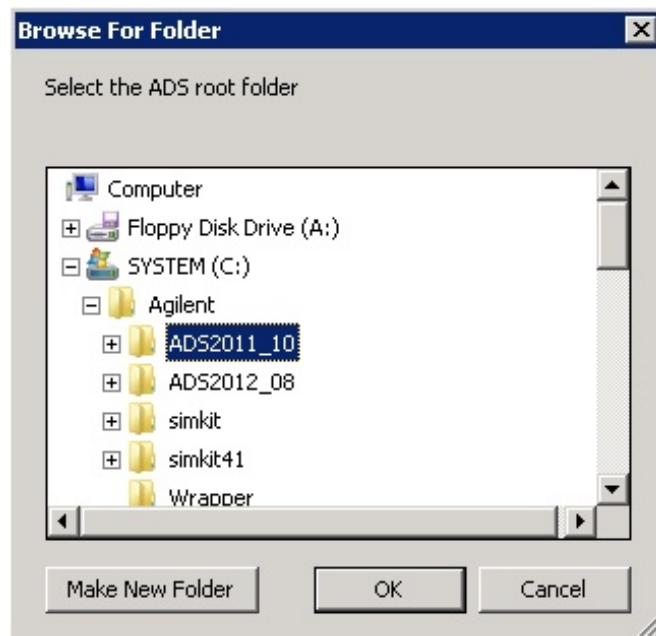
## Create the startup scripts

Now go to the directory 'simdir\simkit\5.9\adsdesignkit\script'. The Visual Basic script 'simkit\_win\_setup' located there allows to create 2 startup scripts which will be later used to start ADS 2012 and higher:



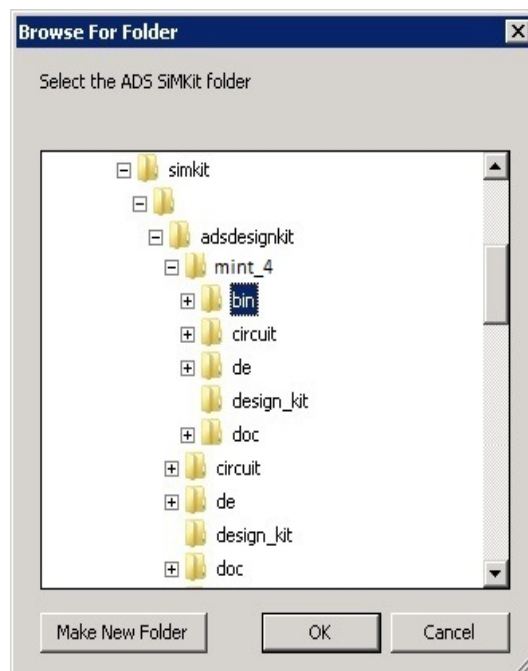
Double-click on the icon of 'simkit\_win\_setup'.

The 1<sup>st</sup> directory that you should specify is the root of the ADS version. In order to select it, navigate through the system and select the appropriate directory:



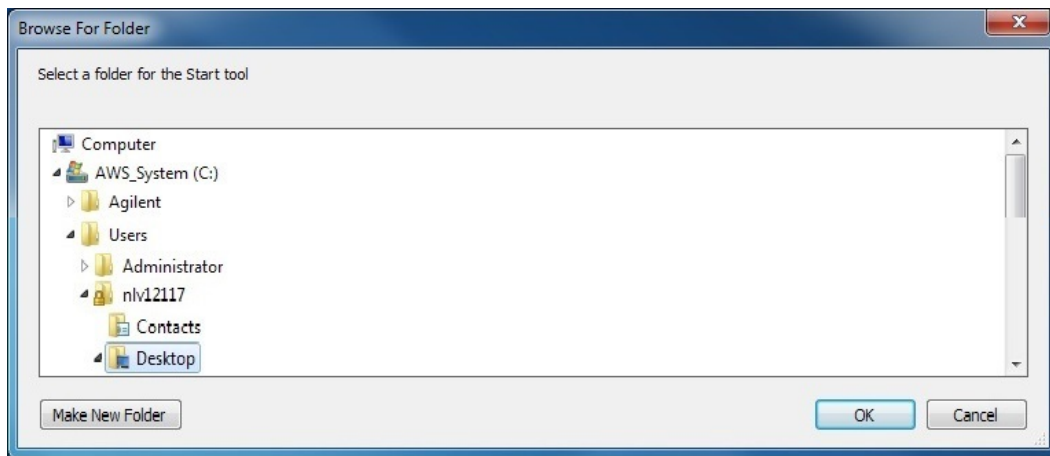
When the root of the ADS installation is selected, please click on OK to validate.

The 2<sup>nd</sup> directory that you should specify is the root of the SiMKit ADS design kit corresponding to the ADS version. In order to select it, navigate to 'simdir\simkit\5.9\adsdesignkit':



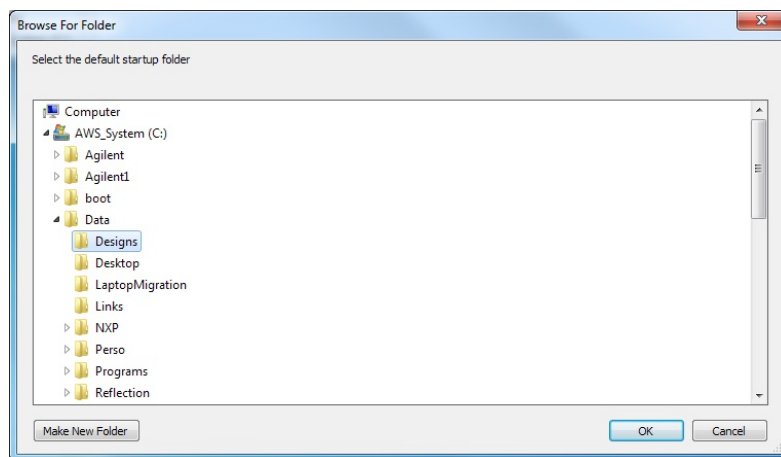
Open the directory 2012, 2014, 2015, 2016, 2017 or 2019, select the 'bin' directory and click on 'OK' to validate.

The 3<sup>rd</sup> directory that you should specify is the directory where you want the start tools to be created in the first place. This directory should be writable for the user, so you can for example select the Desktop (e.g: C:\Users\username\Desktop):



When this is selected, click 'OK' to validate. Later on, when the start scripts are created in this 3<sup>rd</sup> directory, you will have the possibility to move or to copy them to the Start Menu, or to any other places that you find handy to use (see **'How to move the start scripts to the start menu'** right after this paragraph).

The 4<sup>th</sup> and last directory that you should specify is the default startup directory for ADS. You can select here a directory that will allow you to access easily your design projects.



When this is selected, click 'OK' to validate.

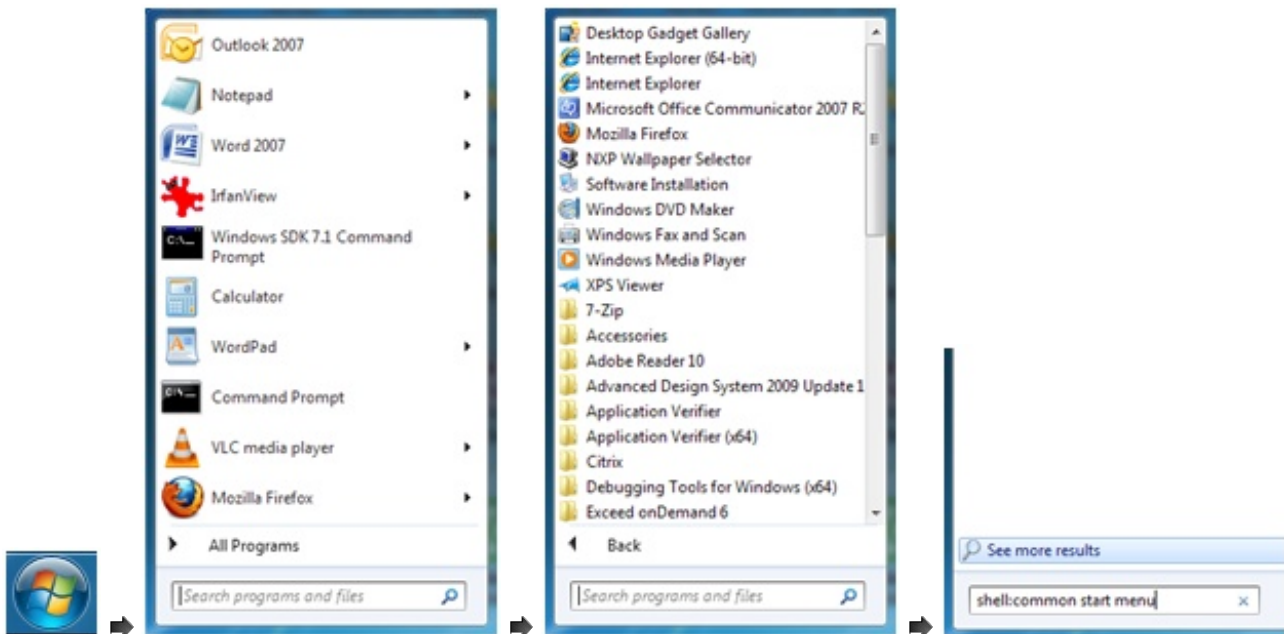
## How to move the start scripts to the start menu

At the location that you selected for the 3<sup>rd</sup> directory (e.g: your desktop), 2 start scripts were created: the 32 bits (SiMKitADS32) and the 64 bits (SiMKitADS64) versions of the start script for ADS with SiMKit.

You can rename these 2 scripts as you wish, for example:

- 'ADS 2009 32bits with SiMKit 5.9'
- 'ADS 2009 64bits with SiMKit 5.9'.

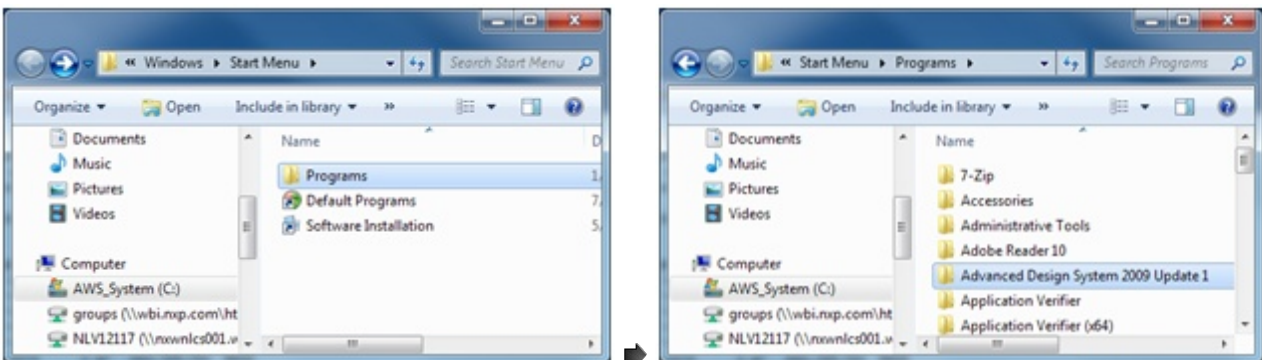
When names are changed, you need to open the Start menu for ADS. The start menu can be located by clicking on 'Start' and then on 'All Programs':



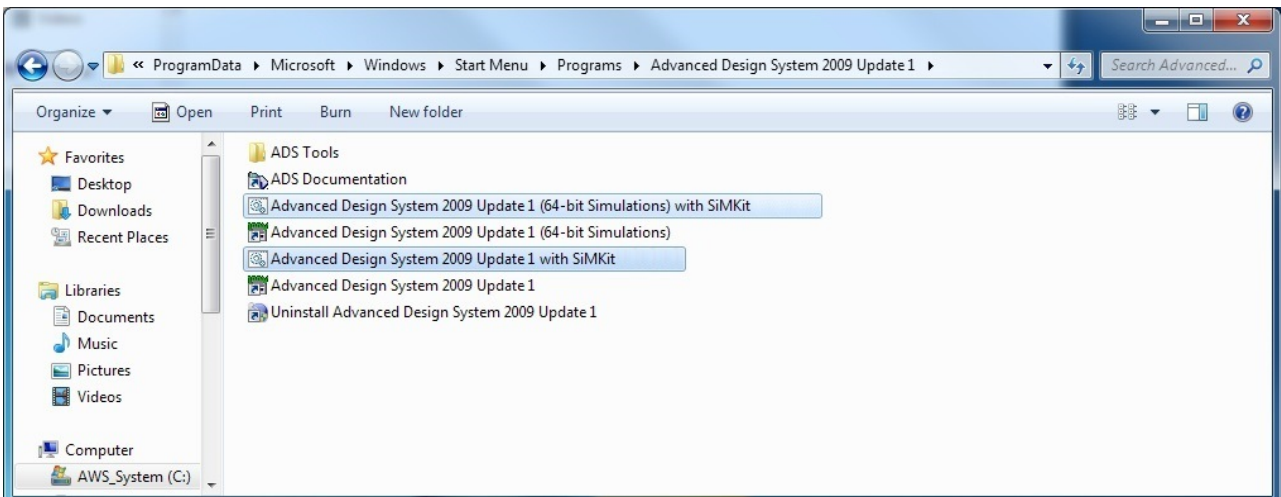
In the 'Search programs and files' entry, type:

`shell:common start menu`

and then press 'Enter': A window appears, open the directory 'Programs' and then the ADS start menu:



You can copy (or move) the 2 start scripts from your Desktop (or from the 3<sup>rd</sup> directory you selected) to this ADS start menu directory:



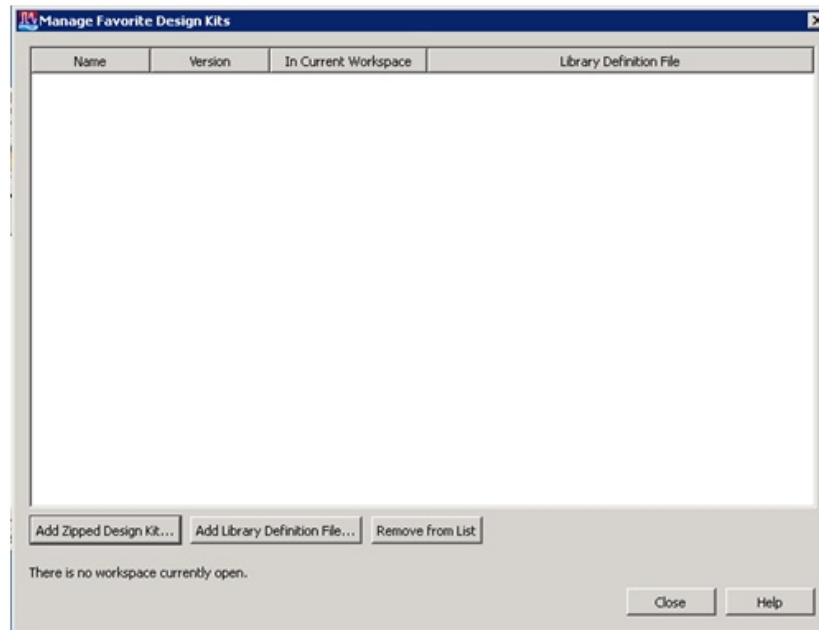
If you want to use SiMKit with ADS, you will need to start ADS using one of the 2 scripts (the 32 or the 64 bits versions).

Of course, it is also possible to move or copy those start scripts to any other directory that you find handy to use.

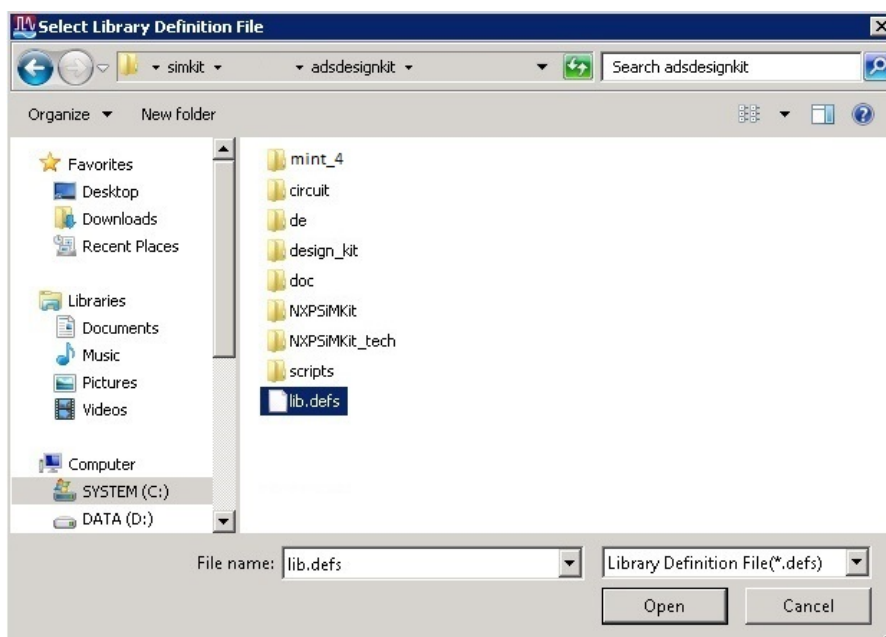
## Installing the SiMKit Designkit for ADS 2012 and higher

Start ADS 2012 and higher via the start scripts created on the Desktop or on the ADS start menu.

In the ADS command window, go to the menu 'DesignKit > Manage Favorite Design Kits':



Click on 'Add Library Definition File' and go to the location where you unpacked simkit: 'simdir\simkit\5.9\adsdesignkit':



Choose 'lib.defs', and see how the Name and Version are automatically filled:





