

AQSG

Android Quick Start Guide

Rev. automotive-13.0.0_1.1.0 — 25 May 2023

User guide

Document Information

Information	Content
Keywords	Android, i.MX, automotive-13.0.0_1.1.0
Abstract	This document guides you through the processes of downloading and running this release package. It only explains how to download and run the default release image with default configuration.



1 Overview

This document guides you through the processes of downloading and running this release package. It only explains how to download and run the default release image with default configuration. For details on using the release package, see the *Android User's Guide* (AUG) included in this release package.

1.1 Acronyms

Table 1. Acronyms

Acronym	Description
U-Boot	Universal Boot Loader
SPL	U-Boot Secondary Program Loader
OS	Operating system
EVS	Android Exterior View System - https://source.android.com/devices/automotive/camera-hal
i.MX 8	i.MX 8 Series Applications Processors
PC	Personal (host) computer
AOSP	Android Open Source Project - https://source.android.com/
GCC	GNU Compiler collection - https://gcc.gnu.org/
MEK	Multisensory Enablement Kit - https://www.nxp.com/design/development-boards/i-mx-evaluation-and-development-boards:SABRE_HOME
SoC	System on Chip - https://en.wikipedia.org/wiki/System_on_a_chip
GAS	Google Automotive Services - https://developers.google.com/cars
CST	(NXP) Code Signing Tool
GPT	GUID partition table - https://en.wikipedia.org/wiki/GUID_Partition_Table
OTA	Over-The-Air programming
BT	Bluetooth
HVAC	Heating, ventilation, and air conditioning
eMMC	Embedded Multi-Media Card
SOF	Sound Open Firmware

2 Hardware Requirements

The hardware requirements for using this release package are as follows:

Supported system-on-chips (SoCs):

- i.MX 8QuadMax (Silicon Revision B0)
- i.MX 8QuadXPlus (Silicon Revision B0 and Silicon Revision C0)

Supported boards:

- i.MX 8QuadXPlus/8QuadMax MEK Board and Platform

3 Working with the i.MX 8QuadXPlus/8QuadMax MEK Board

3.1 Board hardware

The figures below show the different components of the i.MX 8QuadXPlus/8QuadMax MEK boards.

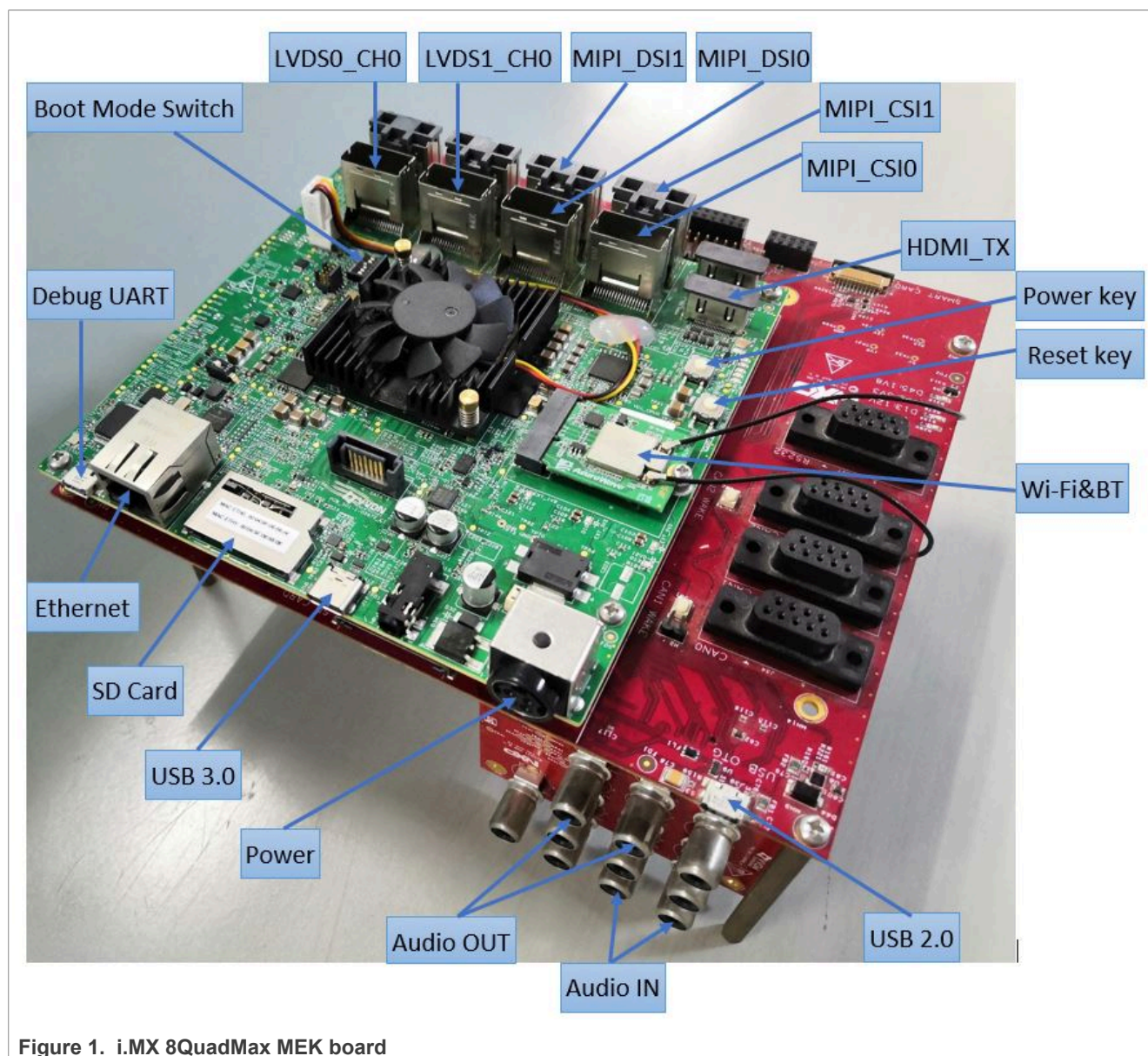


Figure 1. i.MX 8QuadMax MEK board

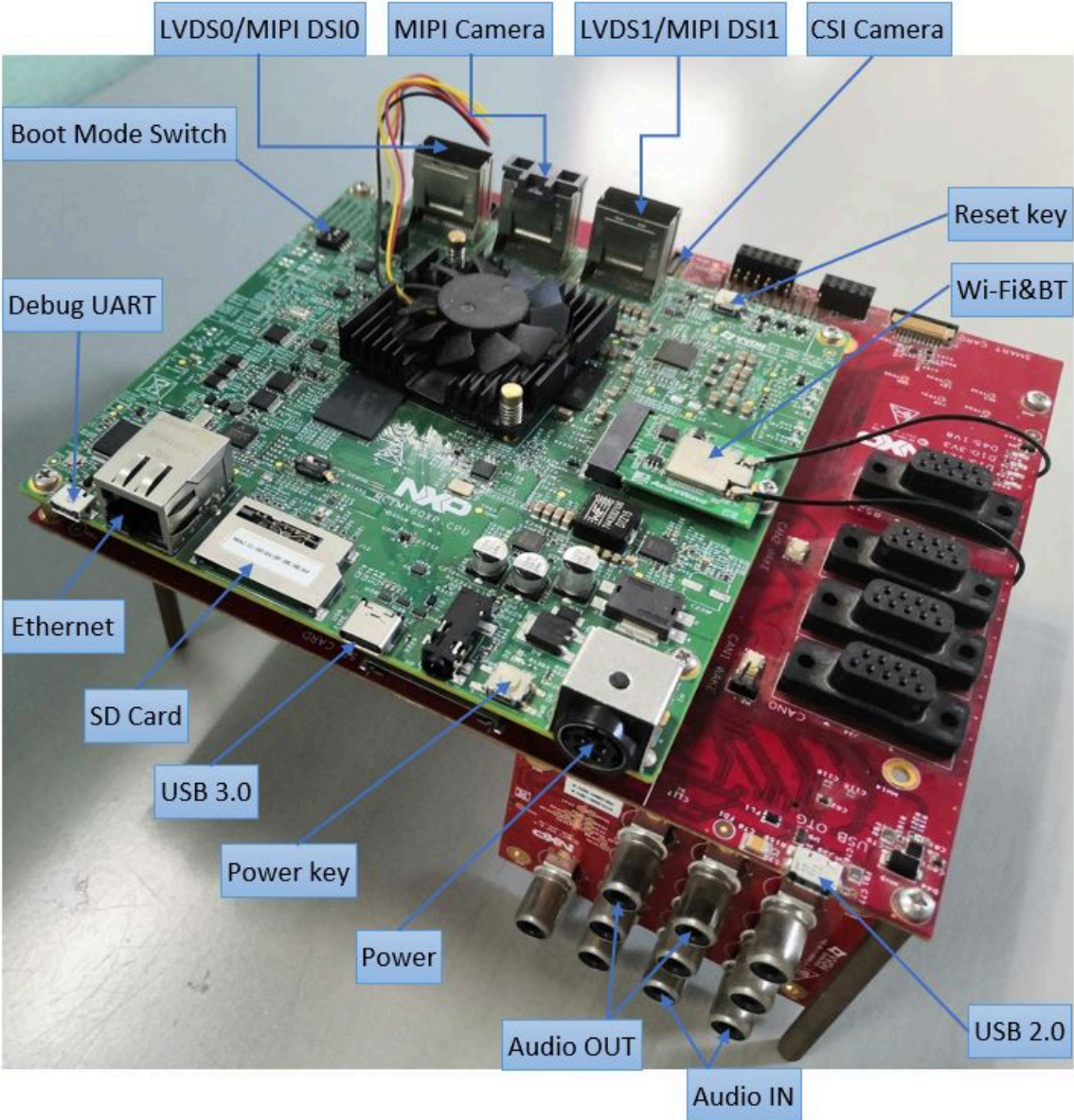


Figure 2. i.MX 8QuadXPlus MEK board

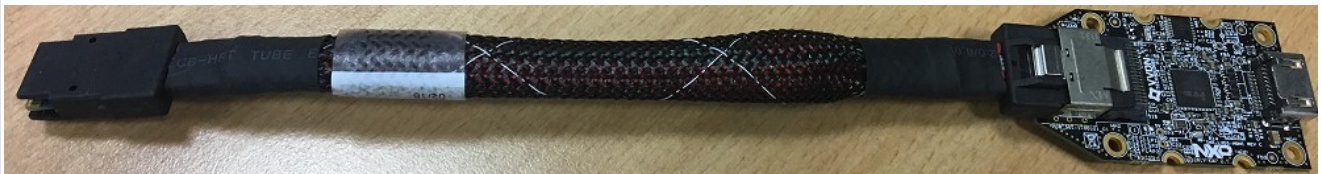


Figure 3. i.MX mini SAS cable with LVDS-to-HDMI adapter

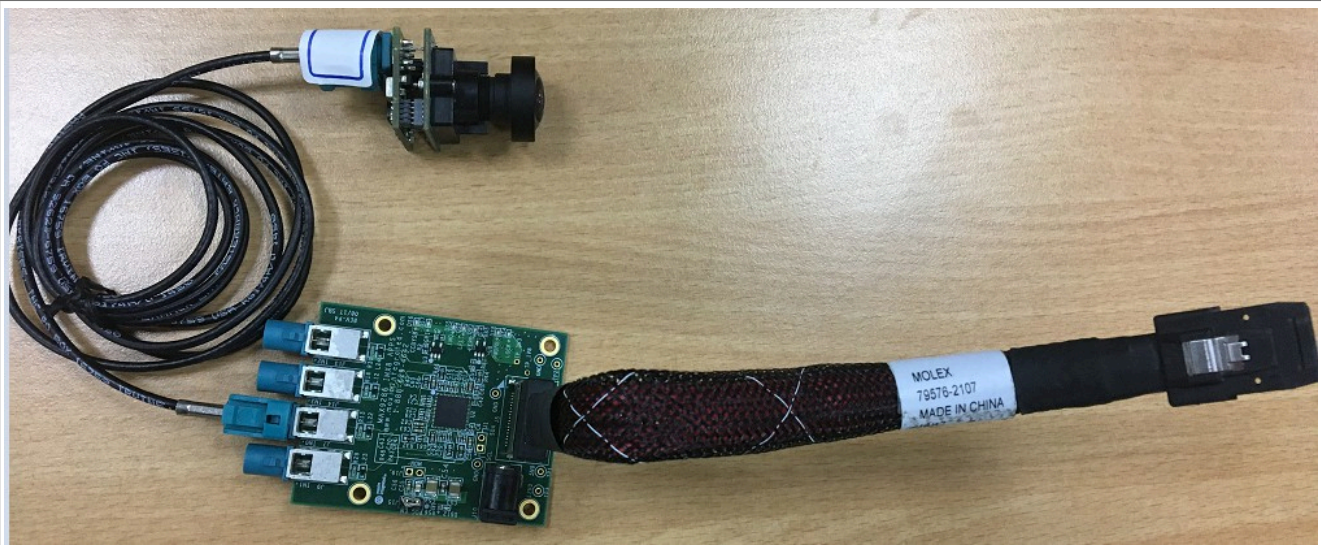


Figure 4. i.MX rearview camera (MAX9286)

Note:

- To use i.MX rearview camera (MAX9286), ensure that the jumper J15 on the camera converter board is installed.
- i.MX 8QuadMax MEK
 - To test the display, connect the "LVDS1_CH0" port to the LVDS-to-HDMI adapter with the i.MX mini SAS cable.
 - To test the rearview camera, connect the "MIPI_CSI0" port with the i.MX MAX9286 MIPI camera.
- i.MX 8QuadXPlus MEK
 - To test the display, connect the "LVDS0" port to the LVDS-to-HDMI adapter with the i.MX mini SAS cable.
 - To test the rearview camera, connect the "MIPI Camera" port with the i.MX MAX9286 MIPI camera.
- "MCIMX8-8X-BB" is required for:
 - "car" image for the UART interface to control the EVS function.
 - Audio media input/output.

3.2 Board images

There are two sets of images of `automotive-13.0.0_1.1.0_image_8qmek_car.tar.gz` and `automotive-13.0.0_1.1.0_image_8qmek_car2.tar.gz`. For more details related to EVS support and its differences between `car` and `car2` images and Dynamic partitions, see the updatable Apex described in the Android documentation (<https://source.android.com/docs/core/ota/apex>). The following table lists their differences with `8qmek_car` and `8qmek_car2` representing these two packages.

Table 2. Image differences

	8qmek_car	8qmek_car2
Exterior View System (EVS) function enabled in Cortex-M core	Y	N
EVS function enabled in Cortex-A core	Y	Y
Supports dynamic partition	N	Y
Supports updatable apex	N	Y

The table below describes the location in the board partitions of the software images in `automotive-13.0.0_1.1.0_image_8qmek_car.tar.gz`.

Table 3. Board images

Image name	Download target
<code>spl-imx8qm.bin</code>	0 KB offset of eMMC boot0 partition for i.MX 8QuadMax MEK.
<code>spl-imx8qm-secure-unlock.bin</code>	0 KB offset of eMMC boot0 partition for i.MX 8QuadMax MEK.
<code>spl-imx8qxp.bin</code>	32 KB offset of eMMC boot0 partition for i.MX 8QuadXPlus MEK with silicon revision B0 chip.
<code>spl-imx8qxp-secure-unlock.bin</code>	32 KB offset of eMMC boot0 partition for i.MX 8QuadXPlus MEK with silicon revision B0 chip.
<code>spl-imx8qxp-c0.bin</code>	32 KB offset of eMMC boot0 partition for i.MX 8QuadXPlus MEK with silicon revision C0 chip.
<code>bootloader-imx8qm.img</code>	<code>bootloader_a</code> and <code>bootloader_b</code> partitions for i.MX 8QuadMax.
<code>bootloader-imx8qm-secure-unlock.img</code>	<code>bootloader_a</code> and <code>bootloader_b</code> partitions for i.MX 8QuadMax.
<code>bootloader-imx8qxp.img</code>	<code>bootloader_a</code> and <code>bootloader_b</code> partitions for i.MX 8QuadXPlus MEK with silicon revision B0 chip.
<code>bootloader-imx8qxp-secure-unlock.img</code>	<code>bootloader_a</code> and <code>bootloader_b</code> partitions for i.MX 8QuadXPlus MEK with silicon revision B0 chip.
<code>bootloader-imx8qxp-c0.img</code>	<code>bootloader_a</code> and <code>bootloader_b</code> partitions for i.MX 8QuadXPlus MEK with silicon revision C0 chip.
<code>u-boot-imx8qm-mek-uuu.imx</code>	Bootloader used by UUU for i.MX 8QuadMax MEK board. It is not flashed to MMC.
<code>u-boot-imx8qxp-mek-uuu.imx</code>	Bootloader used by UUU for i.MX 8QuadXPlus MEK board with silicon revision B0 chip. It is not flashed to MMC.
<code>u-boot-imx8qxp-mek-c0-uuu.imx</code>	Bootloader used by UUU for i.MX 8QuadXPlus MEK board with silicon revision C0 chip. It is not flashed to MMC.
<code>boot.img</code>	<code>boot_a</code> and <code>boot_b</code> partitions to support LVDS-to-HDMI display.
<code>partition-table.img</code>	Program to first 17 KB, and then back up to last 17 KB of the boot storage. GPT table image for 16 GB boot storage.
<code>partition-table-28GB.img</code>	Program to first 17 KB, and then back up to last 17 KB of the boot storage. GPT table image for 32 GB boot storage.
<code>vbmeta-imx8qm-md.img</code>	<code>vbmeta_a</code> and <code>vbmeta_b</code> partitions for i.MX 8QuadMax to support multiple displays.
<code>vbmeta-imx8qm.img</code>	<code>vbmeta_a</code> and <code>vbmeta_b</code> partitions for i.MX 8QuadMax MEK to support LVDS-to-HDMI display.
<code>vbmeta-imx8qxp.img</code>	<code>vbmeta_a</code> and <code>vbmeta_b</code> partitions for i.MX 8QuadXPlus to support LVDS-to-HDMI display.
<code>vbmeta-imx8qm-sof.img</code>	<code>vbmeta_a</code> and <code>vbmeta_b</code> partitions for i.MX 8QuadMax to support SOF on DSP.
<code>vbmeta-imx8qxp-sof.img</code>	<code>vbmeta_a</code> and <code>vbmeta_b</code> partitions for i.MX 8QuadXPlus to support SOF on DSP.
<code>system.img</code>	<code>system_a</code> and <code>system_b</code> partitions.
<code>system_ext.img</code>	<code>system_ext_a</code> and <code>system_ext_b</code> partitions.
<code>vendor.img</code>	<code>vendor_a</code> and <code>vendor_b</code> partitions.

Table 3. Board images...continued

Image name	Download target
product.img	product_a and product_b partitions.
dtbo-imx8qm.img	dtbo_a and dtbo_b partitions for i.MX 8QuadMax.
dtbo-imx8qm-md.img	dtbo_a and dtbo_b partitions for i.MX 8QuadMax to support multiple displays.
dtbo-imx8qm-sof.img	dtbo_a and dtbo_b partitions for i.MX 8QuadMax to support SOF on DSP.
dtbo-imx8qxp.img	dtbo_a and dtbo_b partitions for i.MX 8QuadXPlus.
dtbo-imx8qxp-sof.img	dtbo_a and dtbo_b partitions for i.MX 8QuadXPlus to support SOF on DSP.
rpmb_key_test.bin	Prebuilt test RPMB key, which can be used to set the RPMB key as fixed 32 bytes 0x00.
testkey_public_rsa4096.bin	Prebuilt AVB public key. It is extracted from the default AVB private key.

3.3 Flashing board images

The board image files can be flashed into the target board using Universal Update Utility (UUU).

UUU source code and binary file are released on GitHub: [UUU release page on GitHub](#).

To achieve more flexibility, two script files are provided to invoke UUU to automatically flash all Android images.

- `uuu_imx_android_flash.sh` for Linux OS
- `uuu_imx_android_flash.bat` for Windows OS

For this release, these two scripts are validated on UUU 1.4.243 version. Download corresponding version from GitHub:

- For Linux OS, download the file named `uuu`.
- For Windows OS, download the file named `uuu.exe`.

Because the two script files will directly invoke UUU, make sure that UUU is in a path contained by the system environment variable of "PATH".

Perform the following steps to download the board images:

1. Download the UUU binary file from GitHub as described before. Install UUU into a directory contained by the system environment variable of "PATH".
2. Make the board enter serial download mode.
 - Change the board's SW2 (boot mode) to 001000 (1-6 bit) to enter serial download mode for i.MX 8QuadMax.
 - Change the board's SW2 (boot mode) to 1000 (1-4 bit) to enter serial download mode for i.MX 8QuadXPlus.
3. Power on the board. Use the USB cable on the board USB 3.0 Type-C port to connect your PC with the board.

Note:

- There are three USB ports on the i.MX 8QuadMax/8QuadXPlus MEK board: USB-to-UART, USB 2.0, and USB 3.0.
- The USB-to-UART is known as debug UART, which can be used to watch the log of hardware boot processing.
- USB 2.0 is USB Host and USB 3.0 is USB OTG.

4. Decompress `release_package/automotive-13.0.0_1.1.0_image_8qmek_car.tar.gz` or `release_package/automotive-13.0.0_1.1.0_image_8qmek_car2.tar.gz`, which contains the image files and UUU scripts.
5. Execute the `uuu_imx_android_flash` tool to flash images.
The `uuu_imx_android_flash` tool can be executed with options to get help information and specify the images to be flashed. For Android Auto images on i.MX 8QuadMax/8QuadXPlus MEK board, related options are described as follows.

Table 4. Options for `uuu_imx_android_flash` tool

Option	Description
<code>-h</code>	Displays the help information of this tool.
<code>-f soc_name</code>	Specifies the SoC information. For i.MX 8QuadMax, it should be <code>imx8qm</code> . For i.MX 8QuadXPlus, it should be <code>imx8qxp</code> . This option is mandatory.
<code>-a</code>	Only flashes slot a. If this option and <code>-b</code> option are not used, slots a and b are both flashed.
<code>-b</code>	Only flashes slot b. If this option and <code>-a</code> option are not used, slots a and b are both flashed.
<code>-c card_size</code>	Optional setting: 14 / 28. <ul style="list-style-type: none"> If it is not set, use <code>partition-table.img</code> or <code>partition-table-dual.img</code> (default). If it is set to 14, use <code>partition-table-14GB.img</code> for 16GB SD card. If it is set to 28, use <code>partition-table-28GB.img</code> or <code>partition-table-28GB-dual.img</code> for 32GB SD card. Make sure the corresponding file exists for your platform.
<code>-m</code>	Flashes the MCU image.
<code>-u uboot_feature</code>	Flashes U-Boot or SPL&bootloader image with <code>uboot_feature</code> in their names. For i.MX 8QuadMax MEK, it can be <code>secure-unlock</code> . For i.MX 8QuadXPlus MEK, it can be <code>c0</code> or <code>secure-unlock</code> . If this option is not used, the default <code>spl-imx8qm.bin</code> and <code>bootloader-imx8qm.img</code> are flashed for i.MX 8QuadMax MEK, and the default <code>spl-imx8qxp.bin</code> and <code>bootloader-imx8qxp.img</code> are flashed for i.MX 8QuadXPlus MEK.
<code>-d dtb_feature</code>	Flashes dtbo and vbmeta images with <code>dtb_feature</code> in their names. For i.MX 8QuadMax MEK, it can be <code>md</code> . For i.MX 8QuadXPlus MEK, do not use this option. If this option is not used, default <code>dtbo-imx8qm.img</code> and <code>vbmeta-imx8qm.img</code> are flashed for i.MX 8QuadMax MEK.
<code>-e</code>	Erases user data after images are flashed.
<code>-D directory</code>	Specifies the directory in which there are the images to be flashed. For <code>uuu_imx_android_flash</code> , it must be followed with an absolute path. If this option is not used, images in the current working directory are flashed.
<code>-daemon</code>	Run UUU in Daemon mode. This option is used to flash multiple boards of the same type.
<code>-i</code>	If the script is executed with this option, no images will be flashed. The script loads U-Boot to RAM and executes to fastboot mode. this option is used for development.

Table 4. Options for `uuu_imx_android_flash` tool...continued

Option	Description
<code>-dryrun</code>	Only generates a UUU script but not executes UUU with this script.

- On Linux system, open the shell terminal. For example, you can execute a command as follows:

- For i.MX 8QuadMax:

```
> sudo ./uuu_imx_android_flash.sh -f imx8qm -e
```

- For i.MX 8QuadXPlus (Silicon Revision C0):

```
> sudo ./uuu_imx_android_flash.sh -f imx8qxp -e -u c0
```

- On Windows system, open the command line interface in administrator mode. The corresponding command is as follows:

- For i.MX 8QuadMax:

```
> .\uuu_imx_android_flash.bat -f imx8qm -e
```

- For i.MX 8QuadXPlus (Silicon Revision C0):

```
> .\uuu_imx_android_flash.bat -f imx8qxp -e -u c0
```

When the command above is executed, the default images will be flashed into eMMC both slot a and slot b for i.MX 8QuadMax and all user data will be erased.

Note:

- If `uuu_imx_android_flash.bat` is used to flash images on a remote server through samba, you need to map the remote resource to the local environment first. Take the following command as an example:

```
> net use z: \\192.168.1.1\daily_images
```

"z" in the command represents an available drive letter. It can be other available drive letter.

- To test the demonstration implementation of secure unlock, execute the tool with `-u secure-unlock`. For secure unlock details, see the *i.MX Android Security User's Guide (ASUG)*.
 - To test multiple displays on i.MX 8QuadMax MEK with images in `automotive-13.0.0_1.1.0_image_8qmek_car.tar.gz`, execute the tool with `-d md`.
 - To test multiple displays on i.MX 8QuadMax MEK with images in `automotive-13.0.0_1.1.0_image_8qmek_car2.tar.gz`, execute the tool with `-u md -d md`.
- Wait for the `uuu_imx_android_flash` execution to complete. If there is not any error, you will get information on the command window indicating that images are already flashed.
 - Power off the board.
 - Change boot device as eMMC.
 - Change SW2 to switch the board back to 000100 (1-6 bit) to enter eMMC boot mode for i.MX 8QuadMax.
 - Change SW2 to switch the board back to 0100 (1-4 bit) to enter eMMC boot mode for i.MX 8QuadXPlus.

4 Revision History

Table 5. Revision history

Revision number	Date	Substantive changes
O8.1.0_1.1.0_AUTO-EAR	02/2018	Initial release
O8.1.0_1.1.0_AUTO-beta	05/2018	i.MX 8QuadXPlus/8QuadMax Beta release
P9.0.0_1.0.2-AUTO-alpha	11/2018	i.MX 8QuadXPlus/8QuadMax Automotive Alpha release
P9.0.0_1.0.2-AUTO-beta	01/2019	i.MX 8QuadXPlus/8QuadMax Automotive Beta release

Table 5. Revision history...continued

Revision number	Date	Substantive changes
P9.0.0_2.1.0-AUTO-ga	04/2019	i.MX 8QuadXPlus/8QuadMax Automotive GA release
P9.0.0_2.1.0-AUTO-ga	08/2019	Updated the location of the SCFW porting kit
automotive-10.0.0_1.1.0	03/2020	i.MX 8QuadXPlus/8QuadMax MEK (Silicon Revision B0) GA release
automotive-10.0.0_1.1.0	03/2020	Deleted the Android 10 image
android-10.0.0_2.2.0-AUTO	06/2020	i.MX 8QuadXPlus/8QuadMax MEK GA release
android-10.0.0_2.4.0	07/2020	i.MX 8QuadMax MEK GA release
android-11.0.0_1.1.0-AUTO	01/2021	i.MX 8QuadXPlus/8QuadMax MEK GA release
automotive-11.0.0_2.1.0	11/2021	Added the examples for i.MX 8QuadXPlus and upgraded the tool version
automotive-11.0.0_2.3.0	12/2021	i.MX 8QuadXPlus/8QuadMax MEK (Silicon Revision B0, C0) GA release
automotive-11.0.0_2.5.0	03/2022	i.MX 8QuadXPlus/8QuadMax MEK (Silicon Revision B0, C0) GA release
automotive-12.0.0_1.1.0	06/2022	i.MX 8QuadXPlus/8QuadMax MEK (Silicon Revision B0, C0) GA release
automotive-12.0.0_2.1.0	09/2022	i.MX 8QuadXPlus/8QuadMax MEK (Silicon Revision B0, C0) GA release
automotive-12.1.0_1.1.0	12/2022	i.MX 8QuadXPlus/8QuadMax MEK (Silicon Revision B0, C0) GA release
automotive-13.0.0_1.1.0	05/2023	i.MX 8QuadXPlus/8QuadMax MEK (Silicon Revision B0, C0) GA release

5 Legal information

5.1 Definitions

Draft — A draft status on a document indicates that the content is still under internal review and subject to formal approval, which may result in modifications or additions. NXP Semiconductors does not give any representations or warranties as to the accuracy or completeness of information included in a draft version of a document and shall have no liability for the consequences of use of such information.

5.2 Disclaimers

Limited warranty and liability — Information in this document is believed to be accurate and reliable. However, NXP Semiconductors does not give any representations or warranties, expressed or implied, as to the accuracy or completeness of such information and shall have no liability for the consequences of use of such information. NXP Semiconductors takes no responsibility for the content in this document if provided by an information source outside of NXP Semiconductors.

In no event shall NXP Semiconductors be liable for any indirect, incidental, punitive, special or consequential damages (including - without limitation - lost profits, lost savings, business interruption, costs related to the removal or replacement of any products or rework charges) whether or not such damages are based on tort (including negligence), warranty, breach of contract or any other legal theory.

Notwithstanding any damages that customer might incur for any reason whatsoever, NXP Semiconductors' aggregate and cumulative liability towards customer for the products described herein shall be limited in accordance with the Terms and conditions of commercial sale of NXP Semiconductors.

Right to make changes — NXP Semiconductors reserves the right to make changes to information published in this document, including without limitation specifications and product descriptions, at any time and without notice. This document supersedes and replaces all information supplied prior to the publication hereof.

Suitability for use — NXP Semiconductors products are not designed, authorized or warranted to be suitable for use in life support, life-critical or safety-critical systems or equipment, nor in applications where failure or malfunction of an NXP Semiconductors product can reasonably be expected to result in personal injury, death or severe property or environmental damage. NXP Semiconductors and its suppliers accept no liability for inclusion and/or use of NXP Semiconductors products in such equipment or applications and therefore such inclusion and/or use is at the customer's own risk.

Applications — Applications that are described herein for any of these products are for illustrative purposes only. NXP Semiconductors makes no representation or warranty that such applications will be suitable for the specified use without further testing or modification. Customers are responsible for the design and operation of their applications and products using NXP Semiconductors products, and NXP Semiconductors accepts no liability for any assistance with applications or customer product design. It is customer's sole responsibility to determine whether the NXP Semiconductors product is suitable and fit for the customer's applications and products planned, as well as for the planned application and use of customer's third party customer(s). Customers should provide appropriate design and operating safeguards to minimize the risks associated with their applications and products.

NXP Semiconductors does not accept any liability related to any default, damage, costs or problem which is based on any weakness or default in the customer's applications or products, or the application or use by customer's third party customer(s). Customer is responsible for doing all necessary testing for the customer's applications and products using NXP Semiconductors products in order to avoid a default of the applications and the products or of the application or use by customer's third party customer(s). NXP does not accept any liability in this respect.

Terms and conditions of commercial sale — NXP Semiconductors products are sold subject to the general terms and conditions of commercial sale, as published at <http://www.nxp.com/profile/terms>, unless otherwise agreed in a valid written individual agreement. In case an individual agreement is concluded only the terms and conditions of the respective agreement shall apply. NXP Semiconductors hereby expressly objects to applying the customer's general terms and conditions with regard to the purchase of NXP Semiconductors products by customer.

Export control — This document as well as the item(s) described herein may be subject to export control regulations. Export might require a prior authorization from competent authorities.

Suitability for use in non-automotive qualified products — Unless this data sheet expressly states that this specific NXP Semiconductors product is automotive qualified, the product is not suitable for automotive use. It is neither qualified nor tested in accordance with automotive testing or application requirements. NXP Semiconductors accepts no liability for inclusion and/or use of non-automotive qualified products in automotive equipment or applications.

In the event that customer uses the product for design-in and use in automotive applications to automotive specifications and standards, customer (a) shall use the product without NXP Semiconductors' warranty of the product for such automotive applications, use and specifications, and (b) whenever customer uses the product for automotive applications beyond NXP Semiconductors' specifications such use shall be solely at customer's own risk, and (c) customer fully indemnifies NXP Semiconductors for any liability, damages or failed product claims resulting from customer design and use of the product for automotive applications beyond NXP Semiconductors' standard warranty and NXP Semiconductors' product specifications.

Translations — A non-English (translated) version of a document, including the legal information in that document, is for reference only. The English version shall prevail in case of any discrepancy between the translated and English versions.

Security — Customer understands that all NXP products may be subject to unidentified vulnerabilities or may support established security standards or specifications with known limitations. Customer is responsible for the design and operation of its applications and products throughout their lifecycles to reduce the effect of these vulnerabilities on customer's applications and products. Customer's responsibility also extends to other open and/or proprietary technologies supported by NXP products for use in customer's applications. NXP accepts no liability for any vulnerability. Customer should regularly check security updates from NXP and follow up appropriately. Customer shall select products with security features that best meet rules, regulations, and standards of the intended application and make the ultimate design decisions regarding its products and is solely responsible for compliance with all legal, regulatory, and security related requirements concerning its products, regardless of any information or support that may be provided by NXP.

NXP has a Product Security Incident Response Team (PSIRT) (reachable at PSIRT@nxp.com) that manages the investigation, reporting, and solution release to security vulnerabilities of NXP products.

NXP B.V. - NXP B.V. is not an operating company and it does not distribute or sell products.

5.3 Trademarks

Notice: All referenced brands, product names, service names, and trademarks are the property of their respective owners.

NXP — wordmark and logo are trademarks of NXP B.V.

Contents

1 Overview 2

1.1 Acronyms 2

2 Hardware Requirements 2

3 Working with the i.MX 8QuadXPlus/8QuadMax MEK Board 3

3.1 Board hardware 3

3.2 Board images 5

3.3 Flashing board images 7

4 Revision History 9

5 Legal information 11

Please be aware that important notices concerning this document and the product(s) described herein, have been included in section 'Legal information'.