

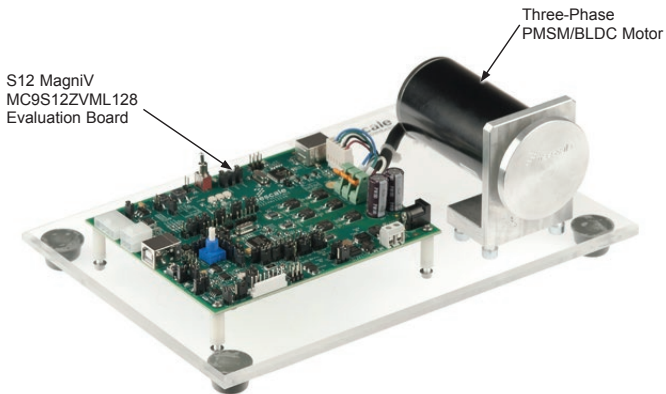
Quick Start Guide AN5327

Three-phase Sensorless Single-Shunt Current-Sensing PMSM Motor Control Application with MagniV MC9S12ZVM



Quick Start Guide

THREE-PHASE SENSORLESS PMSM KIT WITH MagniV MC9S12ZVML128 MCU



THREE-PHASE SENSORLESS PMSM KIT WITH MagniV MC9S12ZVML128 MCU

Hardware

- MagniV MC9S12ZVML128 evaluation board with integrated 3-phase 12 V/10 A power stage
- Three-phase PMSM/BLDC motor with HALL sensor, 24 VDC, 9350 RPM, 90 W, 45ZWN2490B
- USB cable
- 12 VDC power supply

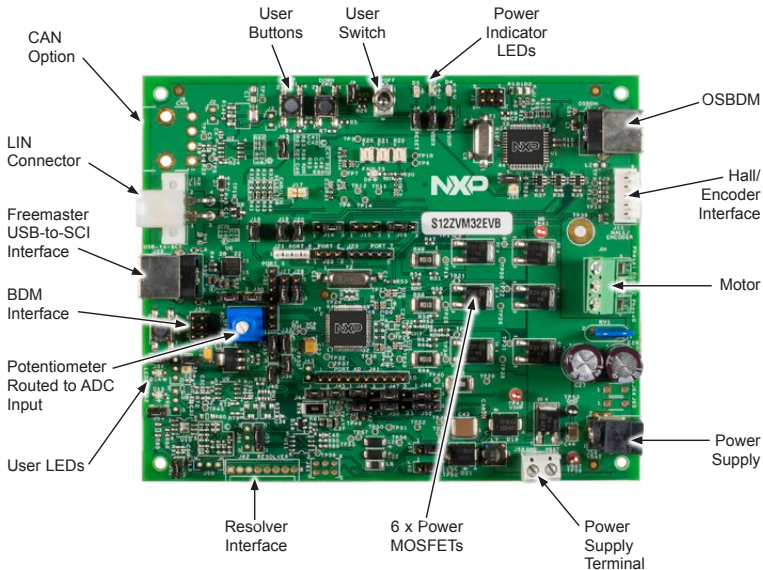
Resources

- Sensorless field-oriented control of PMSM using Back-EMF observer
- Automotive math and motor control library set for MC9S12ZVM installation package

- FreeMASTER installation package
- FreeMASTER project including Motor Control Application Tuning tool
- Three-Phase Sensorless PMSM Kit with MagniV MC9S12ZVML128 MCU Fact Sheet
- Three-phase Sensorless PMSM Kit with MagniV MC9S12ZVML128 MCU Quick Start Guide
- Three-phase Sensorless PMSM Single Shunt Application using MagniV MC9S12ZVML128 MCU Application Note
- MagniV MC9S12ZVML128 Evaluation Board User Guide

Quick Start Guide

GET TO KNOW THE MagniV MC9S12ZVML128 EVALUATION BOARD



Front side of MagniV MC9S12ZVML128

SOFTWARE TOOLS INSTALLATION

- 1** Install the FreeMASTER debugging tool. For FreeMASTER application download, please visit www.nxp.com/freemaster.
- 2** Install the CP210x virtual COM port driver. For the CP210x virtual COM port driver installation file, please visit Downloads section at www.nxp.com/automcdevkits.
- 3** Run “Device Manager” on your system. Check which COM port was assigned to the CP210x COM port driver.
- 4** Connect the USB cable to the MagniV MC9S12ZVML128 evaluation board and the host PC.
- 5** Connect the power supply to the MagniV MC9S12ZVML128 evaluation board.
- 6** Start the FreeMASTER project MC9S12ZVML128_PMSM_Sensorless.pmp located in MTRCKTSPNZVM128\SW\MC9S12ZVML128_PMSM_Sensorless project directory.
- 7** Enable communication by pressing the “STOP” button in the FreeMASTER, or by pressing “CTRL+K.”
- 8** Successful communication is signalized in the status bar. If the communication is not established, check the USB connection between the PC and MagniV MC9S12ZVML128 evaluation board, communication port and speed. The communication port and speed can be set in the Project\Options menu (or pressing “CTRL+T”). The communication speed must be set at 19200 Bd.

APPLICATION CONTROL

1 When the power supply is connected to EVB Board the PMSM motor is in stop mode. To start the motor use the user switch. Blue LED1 (D14) connected to port PS4) of MC9S12ZVML128 Evaluation Board has following functionality:

- OFF if the application is in the READY, INIT states
- Slow flashing if the application is in the
 - CALIB state (flashing with a period of 2 Hz)
 - ALIGN state (flashing with a period of 4 Hz)
- ON if the application is in the RUN state
- Fast flashing if the application is in the
 - FAULT state (flashing with a period of 8 Hz)

2 If no actual faults are present in the system, all the LED-like indicators on the FreeMASTER MCAT Control Page will be dark red. If there is a fault present, identify the source of the fault and remove it. Successful removal is signalized by the switching off of the respective LED-like indicator on the FreeMASTER MCAT Control Page.

3 Press the UP and DOWN (SW1 + SW2) buttons on the MC9S12ZVML128 evaluation board simultaneously to clear the fault status register once in the FAULT state. The application can be restarted by positioning the ON/OFF switch (SW3) on the MC9S12ZVML128 evaluation board to the RUN position (transition from STOP to RUN in case the switch was in the RUN state when the fault event occurred).

APPLICATION CONTROL (CONT.)

4 If all the LED-like indicators on the FreeMASTER MCAT Control Page are off, clear pending faults by pressing the fault button “FAULT CLEAR” on the FreeMASTER MCAT Control Page, or alternatively by pressing the UP+DOWN buttons (SW2+SW1) on the MC9S12ZVML128 Evaluation Board simultaneously. The ON/OFF switch (SW3) on the MC9S12ZVML128 Evaluation Board must be in OFF position.

5 Start the application by pressing “RUN” on the (ON/OFF) button on the FreeMASTER MCAT Control Page or by positioning the ON/OFF switch (SW3) on the MC9S12ZVML128 evaluation board to the ON position (transition from OFF to ON in case the switch was in the ON state when a fault event occurred).

6 Enter the required speed by assigning this value to the “Speed Required” variable in the variables watch window or by clicking on the speed gauge on the FreeMASTER MCAT Control Page. The value is in revolutions per minute. Alternatively, the rotor speed can be increased/decreased by pressing the UP/DOWN switches on the MC9S12ZVML128 evaluation board.

7 Stop the application by pressing “STOP” on the (ON/OFF) switch on the FreeMASTER MCAT Control Page, or by positioning the ON/OFF switch (SW3) on the MC9S12ZVML128 Evaluation Board to the OFF position.

MagniV MC9S12ZVML128 EVALUATION BOARD JUMPER OPTIONS

JUMPER	OPTION	SETTING	DESCRIPTION
J2	CAN transceiver 5 V supply option	OPEN	V_{DDC} ballast transistor is not supplied from V_{SUP}
		CLOSE	V_{DDC} ballast transistor is supplied from V_{SUP}
J3	V_{DDC} supplied from USB option	*OPEN*	V_{DDC} node is not supplied from the USB-to-SCI interface
		CLOSE	V_{DDC} node is supplied from the USB-to-SCI interface
J4	RESET LED indicator option	OPEN	RESET LED indicator disabled
		CLOSE	RESET LED indicator enabled
J5	V_{DDX} LED indicator option	OPEN	V_{DD} LED indicator disabled
		CLOSE	V_{DD} LED indicator enabled
J6	OSJTAG bootloader selection	OPEN	V_{SUP} LED indicator disabled
		CLOSE	V_{SUP} LED indicator enabled

MagniV MC9S12ZVML128 EVALUATION BOARD JUMPER OPTIONS (CONT.)

JUMPER	OPTION	SETTING	DESCRIPTION
J9	ON/OFF switch option	OPEN	ON/OFF switch disabled
		CLOSE	ON/OFF switch disabled
J10	OSBDM boot-loader option	*OPEN*	OSBDM boot-loader disabled
		CLOSE	OSBDM boot-loader enabled
J12	Resolver circuit 5 V supply option	OPEN	Resolver Inputs circuitry (+5VDC) supply disabled
		CLOSE	Resolver Inputs circuitry (+5VDC) supply enabled
J14	EVDD or FAULT selector	1-2	FAULT input is connected to port PP0
		2-3	Port PP0 is connected to EVDD at Hall sensor interface
J15	Resolver or Hall/ Encoder Phase A selector	1-2	Phase A from Resolver is connected to port PT1
		2-3	Phase A from Hall / Encoder interface is connected to port PT1

Quick Start Guide

MagniV MC9S12ZVML128 EVALUATION BOARD JUMPER OPTIONS (CONT.)

JUMPER	OPTION	SETTING	DESCRIPTION
J16	Resolver or Hall/ Encoder Phase B Selector	*1-2*	Phase B from Hall/Encoder interface is connected to port PT2
		2-3	Phase B from Resolver is connected to port PT2
J18	USB-to-SCI interface supply option	OPEN	USB-to-SCI isolator supply disable
		CLOSE	USB-to-SCI isolator supply disable
J19	"UP" pushbutton option	OPEN	"UP" push button disabled
		CLOSE	"UP" push button enabled
J20	"DOWN" pushbutton option	OPEN	"DOWN" push button disabled
		CLOSE	"DOWN" push button enabled
J27	SCI RXD selector	1-2	RXD from OSBDM is connected to port PS2
		2-3	RXD from USB-to-SCI is connected to port PS2

MagniV MC9S12ZVML128 EVALUATION BOARD JUMPER OPTIONS (CONT.)

JUMPER	OPTION	SETTING	DESCRIPTION
J28	SCI TXD selector	1–2	TXD from OSBDM is connected to port PS3
		2–3	TXD from USB-to-SCI is connected to port PS3
J29	BDM interface supply option	OPEN	BDM supply disabled
		CLOSE	BDM supply enabled
J30	ADC potentiometer pull-up option	OPEN	POT 1 (ADC potentiometer) supply disabled
		CLOSE	POT 1 (ADC potentiometer) supply enabled
J33	Microcontroller supply option	OPEN	MCU supply disabled
		CLOSE	MCU supply enabled
J35	ADC mapping–PAD0	*1–2*	Connects PAD0 to AMP0 external gain-setting resistors
		2–3	Connects PAD0 to POS_SIN resolver output

MagniV MC9S12ZVML128 EVALUATION BOARD JUMPER OPTIONS (CONT.)

JUMPER	OPTION	SETTING	DESCRIPTION
J36	V_{REF} generation supply option	OPEN	Disconnects V_{SUP} to supply a regulated voltage at V_{REF2}
		CLOSE	Connects V_{SUP} to supply a regulated voltage at V_{REF2}
J37	USER LED1 option	OPEN	“User LED1” disabled
		CLOSE	“User LED1” enabled
J38	PDO-PDOCLK	*OPEN*	PDO-PDOCLK not shorted
		CLOSE	PDO-PDOCLK shorted
J39	Resolver phase B selector	*1-2*	Pins 1-2 closed—SINCOS I/O connector Phase B connected to Resolver Phase B input
		2-3	Pins 2-3 closed—POS_COS connected to Resolver Phase B input
J40	V_{DDX} ballast supply option	OPEN	V_{DDX} ballast is disconnected
		CLOSE	V_{DDX} ballast is connected

MagniV MC9S12ZVML128 EVALUATION BOARD JUMPER OPTIONS (CONT.)

JUMPER	OPTION	SETTING	DESCRIPTION
J43	Resolver circuit 12 V supply option	OPEN	Resolver generator circuit supply disconnected
		CLOSE	Resolver generator circuit supply connected
J44	ADC mapping – PAD1	OPEN	PAD1 is disconnected from the AMPM0 external gain-setting resistors
		CLOSE	PAD1 is connected to the AMPM0 external gain-setting resistors
J45	ADC mapping – PAD2	OPEN	PAD2 is disconnected from the AMPP0 external gain-setting resistors
		CLOSE	PAD2 is connected to the AMPP0 external gain-setting resistors
J46	ADC mapping – PAD3	*1–2*	Connects PAD3 to ADC_IA (phase A current sense from external op-amp)
		2–3	Connects PAD3 to POS_SIN resolver output

MagniV MC9S12ZVML128 EVALUATION BOARD JUMPER OPTIONS (CONT.)

JUMPER	OPTION	SETTING	DESCRIPTION
J47	ADC mapping— PAD4	*1–2*	Connects PAD4 to ADC_IB (phase B current sense from external op-amp)
		2–3	Connects PAD4 to ADC potentiometer POT1
J48	ADC mapping— PAD5	*1–2*	Connects PAD5 to AMP1 external gain setting resistors
		2–3	Connects PAD5 to ADC_IB (phase B current sense from external op-amp)
J49	Resolver phase A selector	*1–2*	Resolver phase A connected to SINCOS I/O connector Phase A input
		2–3	Resolver phase A connected to Resolver POS_SIN Schmitt-Trigger
J50	ADC mapping— PAD6	*1–2*	Connects PAD6 to AMPM1 external gain-setting resistors
		2–3	Connects PAD6 to POS_COS resolver output

MagniV MC9S12ZVML128 EVALUATION BOARD JUMPER OPTIONS (CONT.)

JUMPER	OPTION	SETTING	DESCRIPTION
J51/42	ADC mapping— PAD7	*J51 (1–2)*	Connects PAD7 to AMPP1 external gain-setting resistors
		J51 (2–3)	Connects PAD7 to POS_SIN resolver output
		J42 (1) – J51 (2)	Connects PAD7 to ADC potentiometer POT1
J52	ADC mapping— PAD8	*1–2*	Connects PAD8 to ADC_IC (phase C current sense from external op-amp)
		2–3	Connects PAD8 to POS_COS resolver output
J53	USER LED2 option	OPEN	“User LED 2” disabled
		CLOSE	“User LED 2” enabled
J55	V_{REF} selector	*1–2*	V_{REF} supplied from V_{DDX}
		2–3	V_{REF} supplied from the V_{REF2} regulator

MagniV MC9S12ZVML128 EVALUATION BOARD JUMPER OPTIONS (CONT.)

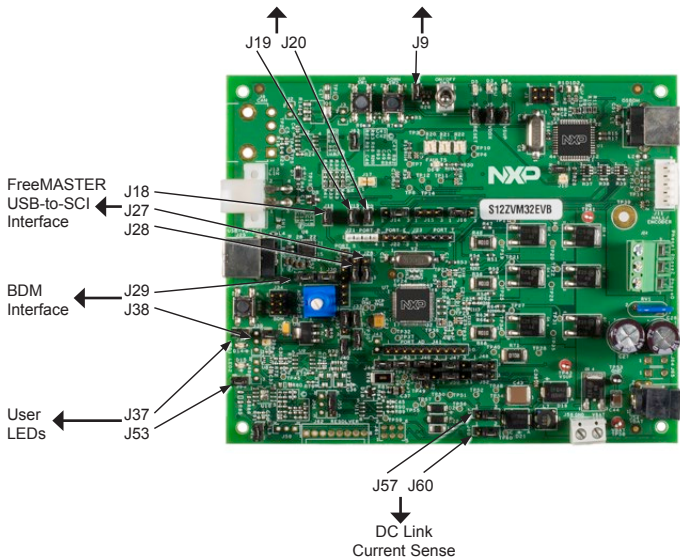
JUMPER	OPTION	SETTING	DESCRIPTION
J56	Resolver COS reference	*1-2*	Input to POS_COS circuit is from OFFSET1
		2-3	Input to POS_COS circuit is from RES_COS_REF
J57	Internal AMP0 input selector (inverting)	*1-2*	Connects DC Bus to the internal AMP0 inverting input (Phase A current sense)
		2-3	Connects Ground to the internal AMP0 inverting input (DC Bus current sense)
J59	Resolver SIN reference	*1-2*	Input to POS_SIN circuit is from RES_SIN_REF
		2-3	Input to POS_SIN circuit is from OFFSET1
J60	Internal AMP0 input selector (non-inverting)	1-2	Connects Phase A to the internal AMP0 noninverting input (Phase A Current sense)
		2-3	Connects DC Bus as non-inverting input for internal AMP0 (DC Bus current sense)

MagniV MC9S12ZVML128 EVALUATION BOARD JUMPER OPTIONS (CONT.)

JUMPER	OPTION	SETTING	DESCRIPTION
J63	FAULT comparators 5 V supply option	OPEN	FAULT circuit supply disconnected
		CLOSE	FAULT circuit supply connected

Quick Start Guide

MagniV MC9S12ZVML128 EVALUATION BOARD JUMPER OPTIONS



Front side of MagniV MC9S12ZVML128

NXP

SUPPORT

Visit www.nxp.com/support for a list of phone numbers within your region.

WARRANTY

Visit www.nxp.com/warranty for complete warranty information.



Get Started

Download installation software and documentation under “Jump Start Your Design” at www.nxp.com/automcdevkits.

www.nxp.com/automcdevkits

NXP, the NXP logo and MagniV are trademarks of NXP B.V. All other product or service names are the property of their respective owners. © 2015–2016 NXP B.V.

Document Number: AN5327QSG REV 0

Agile Number: 926-xxxxx REV A