

LFSTBEB7660 Quick Start Guide

STEP 1 **Unpack the board.**
Verify package contents
according to the kit Web site:
<http://www.freescale.com/sensortoolbox>

Assemble the hardware by connecting a development board to the interface board. This board is intended for use paired with an Accelerometer Interface Board, purchased separately. More information can be found on the Web site.

STEP 2 **Go to <http://www.freescale.com/sensortoolbox> and download the latest version of software by clicking the link.** [Download Software](#)

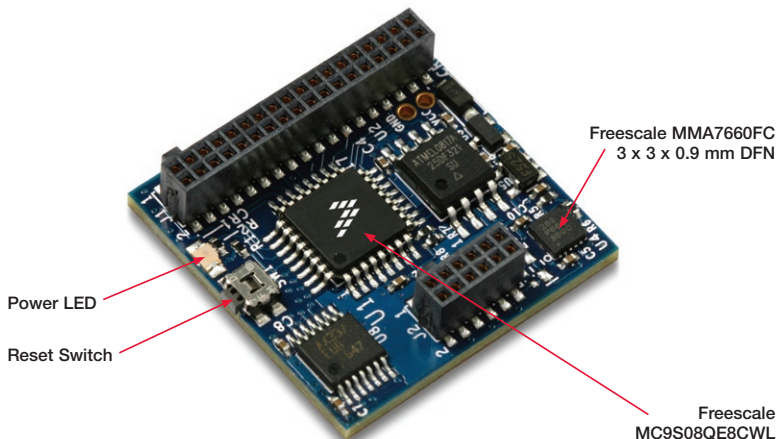
All Sensor Toolbox kits use the same software and driver, so the install only needs to be done once. During the install of the software follow the on screen

instructions to install the communication driver for the tool. Check back occasionally for software updates.

STEP 3 **Plug in the USB and turn the board on using the power switch. Run the Sensor Toolbox link on your desktop and enjoy!**

For other compatible kits visit <http://www.freescale.com/sensortoolbox>





Learn more at www.freescale.com/sensortoolbox

Freescale and the Freescale logo are trademarks or registered trademarks of Freescale Semiconductor, Inc. in the U.S. and other countries. All other product or service names are the property of their respective owners. © Freescale Semiconductor, Inc. 2009.

Doc Number: LFSBEB7660ACCQSG / REV 0
Agile Number: 926-78335 / REV A