

Introduction:

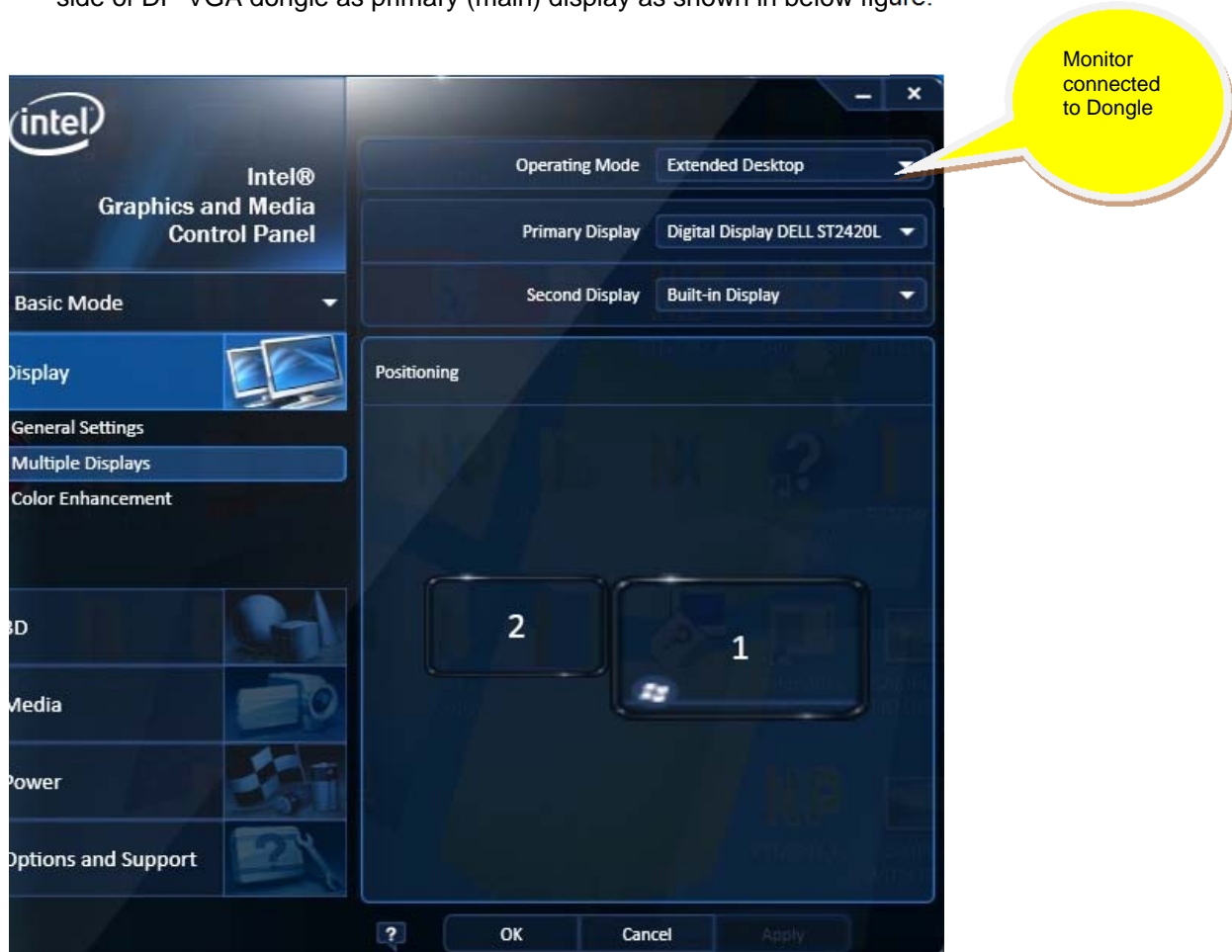
PTN3356 firmware F1 updater (PTN3356_F1.exe) is a PC utility which provides “Flash-over-AUX” capability to enable firmware upgradability in the field. PTN3356 firmware F1 updater upgrades all of previous firmware version to version F1 in PTN3356 inside NXP DP to VGA bridge device.

This user manual is mainly focused on the operation of PTN3356 firmware F1 updater. In the operation section, it uses the actual operation panel to guide user step to step. The details of each function is explained and listed in order.

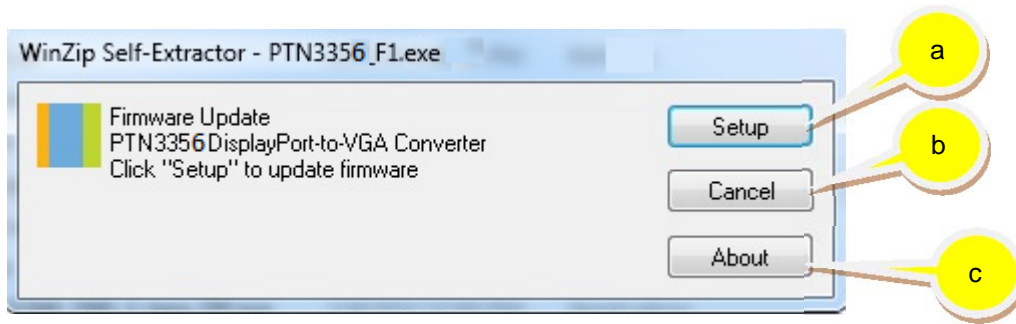
PTN3356 firmware F1 updater supports Windows XP, 7 and 8 operation system in all platforms. Please install the latest version of graphics card driver before start running firmware updater.

Operation:

1. Connect a monitor to VGA side of NXP DP to VGA dongle, and then plug in NXP DP to VGA dongle into DP connector of a DisplayPort source with Windows XP, 7 or 8 OS.
2. Use Graphics properties to select extended mode, and monitor (DELL ST2420L) is connected to VGA side of DP-VGA dongle as primary (main) display as shown in below figure.



Click the PTN3356 firmware F1 updater (PTN3356_F1.exe) icon, the following control panel will pop up.



- a) Use “Setup” button to start updating firmware F1 to PTN3356 in NXP DP to VGA dongle.
 - b) Use “Cancel” button to close the program.
 - c) Use “About” button to read some detail about the PTN3356 firmware F1 updater.
3. After click the “Setup”, it starts to flash the firmware F1 into PTN3356 in NXP DP to VGA dongle.



4. It shows “Finished.” after firmware upgrade is done.

