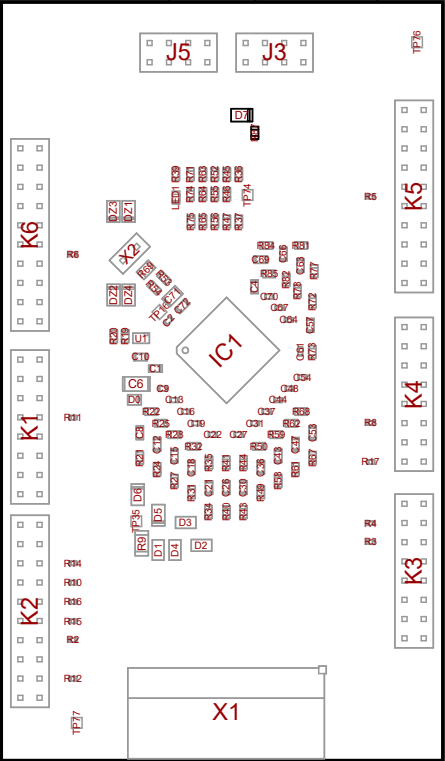
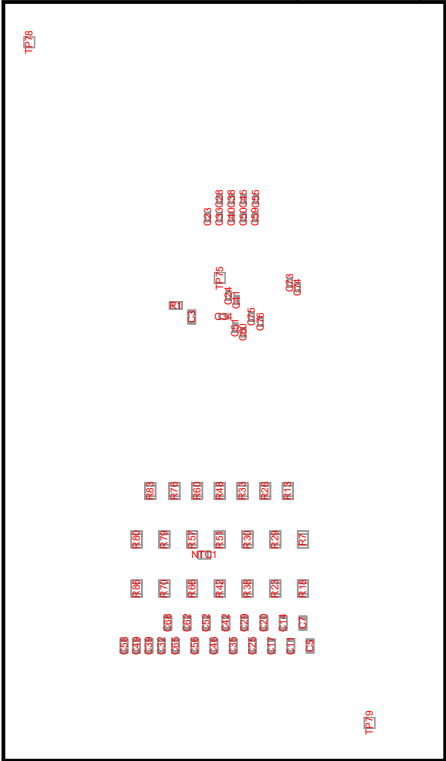


XFRDM33771CSPIEB

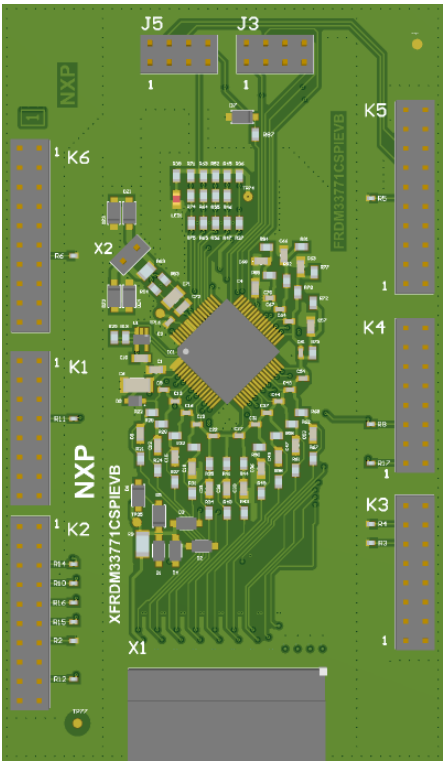
View from Top side (Scale 1:1)



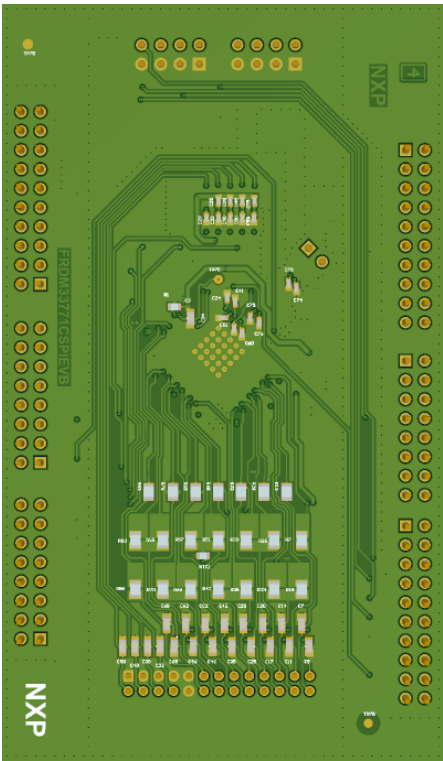
View from Bottom side (Scale 1:1)



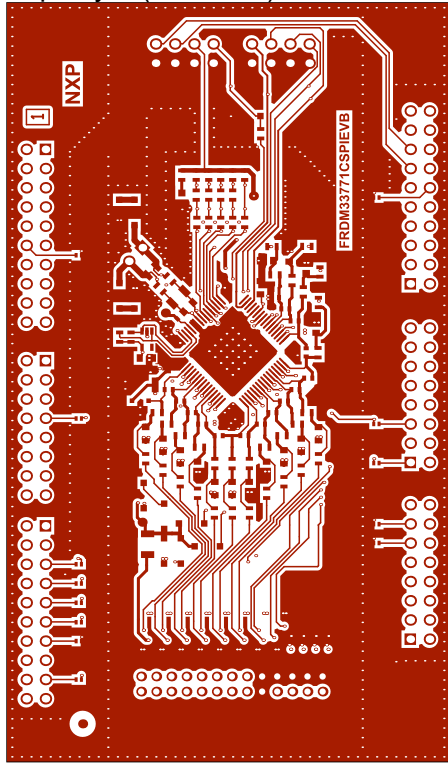
Realistic View



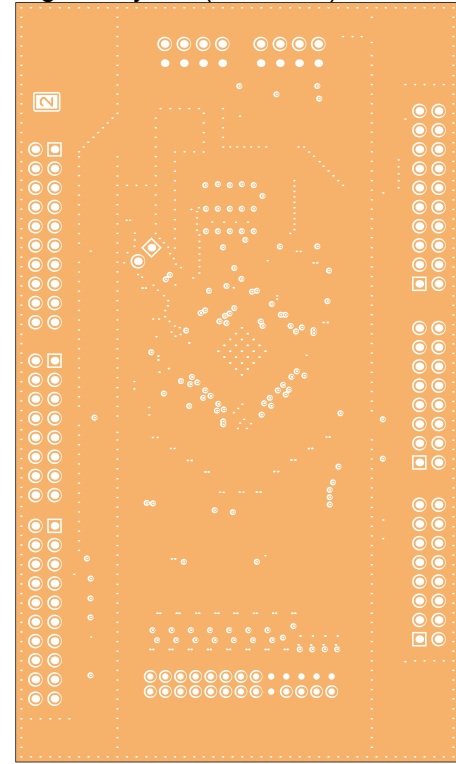
Realistic View



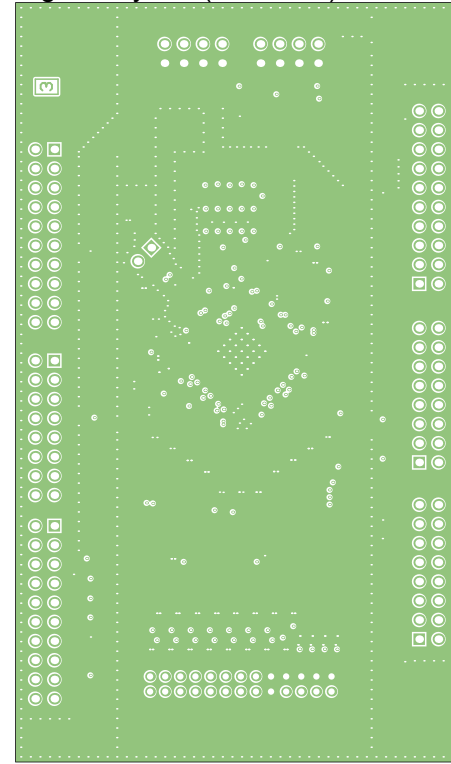
Top Layer (Scale 1:1)



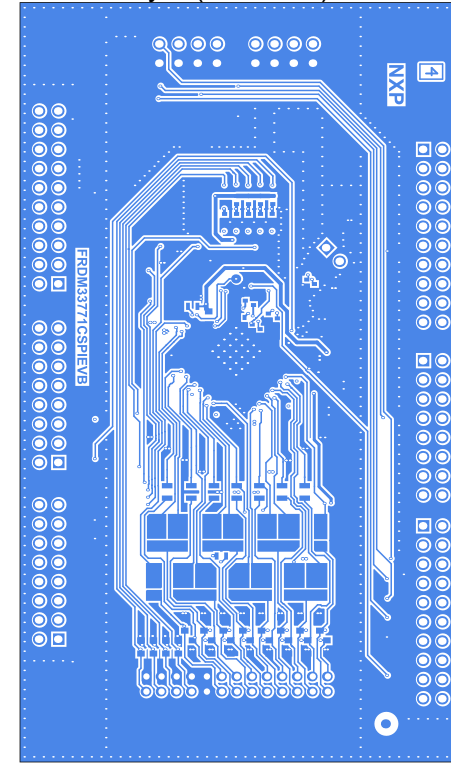
Signal Layer 1 (Scale 1:1)



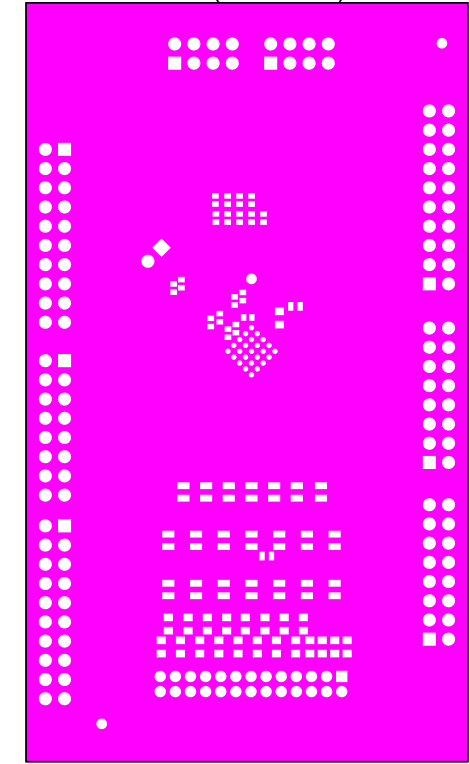
Signal Layer 2 (Scale 1:1)



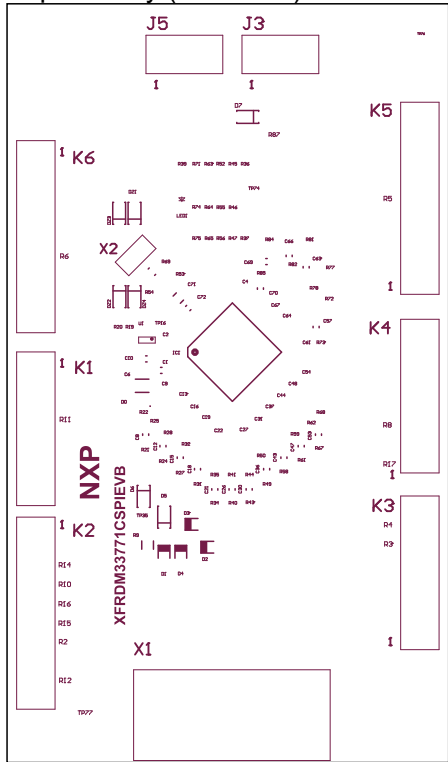
Bottom Layer (Scale 1:1)



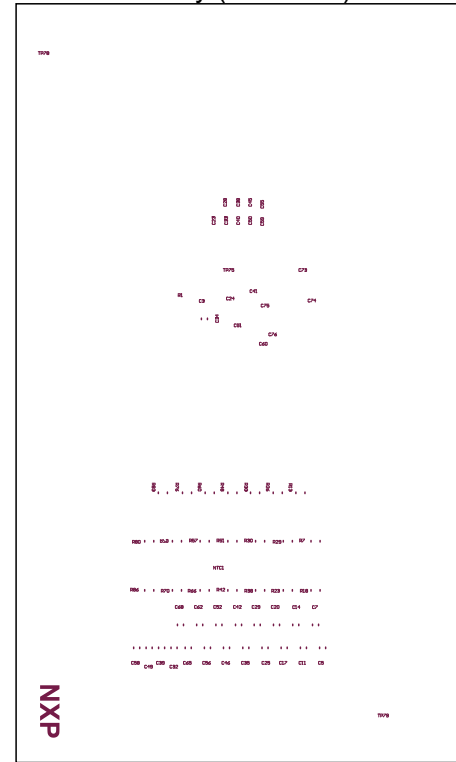
Bottom Solder (Scale 1:1)



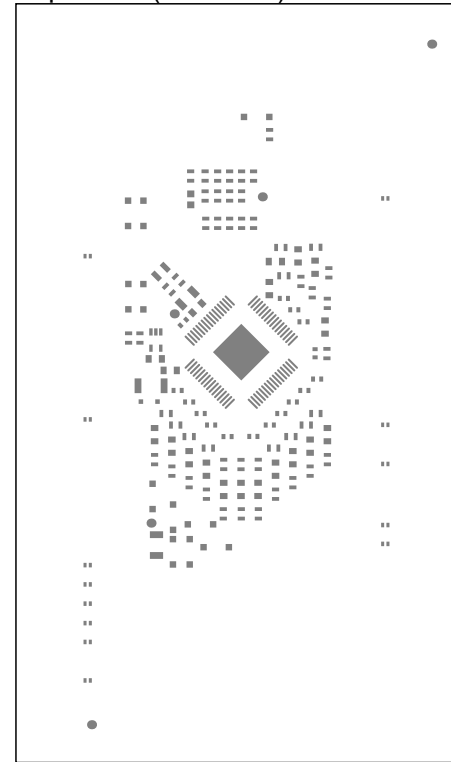
Top Overlay (Scale 1:1)



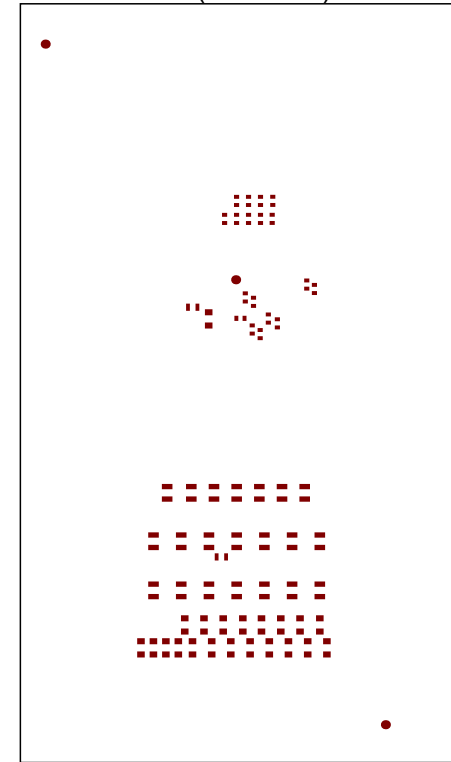
Bottom Overlay (Scale 1:1)



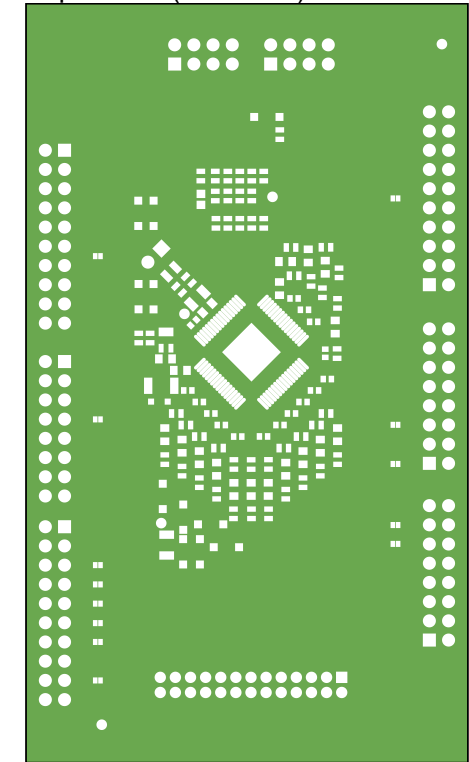
Top Paste (Scale 1:1)



Bottom Paste (Scale 1:1)



Top Solder (Scale 1:1)



Bill Of Materials

Line #	Designator	Comment	Quantity	AGILE_PN	MFG No.
1	C1	1n	1	150-80679	CGA3E2X7R2A102K08 0AE
2	C2, C73, C74, C75, C76	47n	5	150-79727	GCM155R71C473KA37 D
3	C3	220p	1	150-77535	C0603C221K5GACTU
4	C4, C72	2u2	2	150-79033	GCM188R70J225KE22 D
5	C5, C7, C11, C14, C17, C20, C25, C29, C35, C42, C46, C52, C56, C62, C65, C68	47nF/100V	16	150-80597	CGA3E3X7S2A473K08 0AE
6	C6	220n	1	150-80658	CGA5H2X7R2A224K11 5AE
7	C8, C10, C12, C15, C18, C21, C26, C30, C36, C43, C47, C53, C57, C63, C66, C69	100n/100V	16	150-79200	0603B104K101CT
8	C9, C13, C16, C19, C22, C27, C31, C37, C44, C48, C54, C61, C64, C67, C70	10n	15	150-76270	C0402C103K4PAC
9	C23, C24, C28, C32, C33, C34, C38, C39, C40, C41, C45, C49, C50, C51, C55, C58, C59, C60	1n2	18	150-79221, 150-80317	GCM155R71H122KA37 , 885012006014
10	C71	4u7	1	150-79211	GCM21BC71A475KA7 3
11	D0	PESD5V0U1BB	1	480-80130	PESD5V0U1BB
12	D1	MMSZ5267BT1G	1	480-78595	MMSZ5267BT1G
13	D2	MMSZ5260BT1G	1	480-78926	MMSZ5260BT1G
14	D3	MMSZ5255BT1G	1	480-79788	MMSZ5255BT1G
15	D4	MMSZ5250BT1G	1	480-78921	MMSZ5250BT1G
16	D5, D6	MMSZ5237BT1G	2	480-78587	MMSZ5237BT1G
17	D7	MMSZ5230BT1G	1	480-78759	MMSZ5230BT1G
18	DZ1, DZ2, DZ3, DZ4	MMSZ4679T1G	4	480-79782	ON Semiconductor
19	IC1	MC33771	1	312-82227	MC33771CTP1AE
20	J3, J5	2x4 SAMTEC-THT 2.54mm	2	DNP	
21	K1, K3, K4	2x8 SAMTEC-THT 2.54mm	3	210-80247	SSQ-108-23-G-D
22	K2, K5, K6	2x10 SAMTEC-THT 2.54mm	3	210-80513	SSQ-110-23-G-D
23	LED1	RED	1	370-75083	597-5112-407F
24	NTC1	10K	1	470-80831	NCP15XV103J03RC
25	R1, R19, R20, R39, R87	10K	5	470-75416	RK73H1ETTP1002F
26	R2, R3, R4, R5, R6, R8, R10, R11, R12, R14, R15, R16, R17	0R	13	470-79965	ERJ-2GE0R00X
27	R7, R18, R23, R29, R30, R38, R42, R51, R57, R66, R70, R79, R80, R86	40.2R	14	470-82049	ERJ-P06F40R2V
28	R9	10R	1	470-80569	RC1206FR-0710RL
29	R13, R26, R33, R48, R60, R76, R83	3.3R	7	470-80559	RK73H2ATTD3R30F
30	R21, R24, R27, R31, R34, R40, R43, R49, R58, R61, R67, R72, R77, R81, R84	3K	15	470-30482	RK73H1ETTP3001F
31	R22, R25, R28, R32, R35, R41, R44, R50, R59, R62, R68, R73, R78, R82, R85	2K	15	470-80507	RK73H1ETTP2001F
32	R36, R45, R52, R63, R71	6K8	5	470-30929	RK73H1ETTP6801F
33	R37, R46, R47, R55, R56, R64, R65, R74, R75	3K3	9	470-76064	RC0402JR-073K3L
34	R53, R54	127R	2	470-76696	CR0603-FX-1270ELF
35	R69	0R1	1	DNP 470-82385	ERJ-6DSFR10V
36	TP16, TP35, TP74, TP75, TP76, TP77, TP78, TP79	Testpoint	8		
37	U1	24LC01BT-I/OT	1	334-77588	24LC01BT-I/OT
38	X1	MOLEX-501876-2640	1		
39	X2	1x2	1		

Layer Stack Legend

Material	Layer	Thickness	Dielectric Material	Type	Gerber
	Top Overlay			Legend	GTO
Surface Material	Top Solder	0.01mm	Solder Resist	Solder Mask	GTS
Copper	Top Layer	0.04mm		Signal	GTL
Prepreg		0.13mm	FR-4	Dielectric	
Copper	Signal Layer 1	0.04mm		Signal	G1
Core		1.00mm		Dielectric	
Copper	Signal Layer 2	0.04mm		Signal	G2
Prepreg		0.13mm		Dielectric	
Copper	Bottom Layer	0.04mm		Signal	GBL
Surface Material	Bottom Solder	0.01mm	Solder Resist	Solder Mask	GBS
	Bottom Overlay			Legend	GBO
Total thickness: 1.41mm					