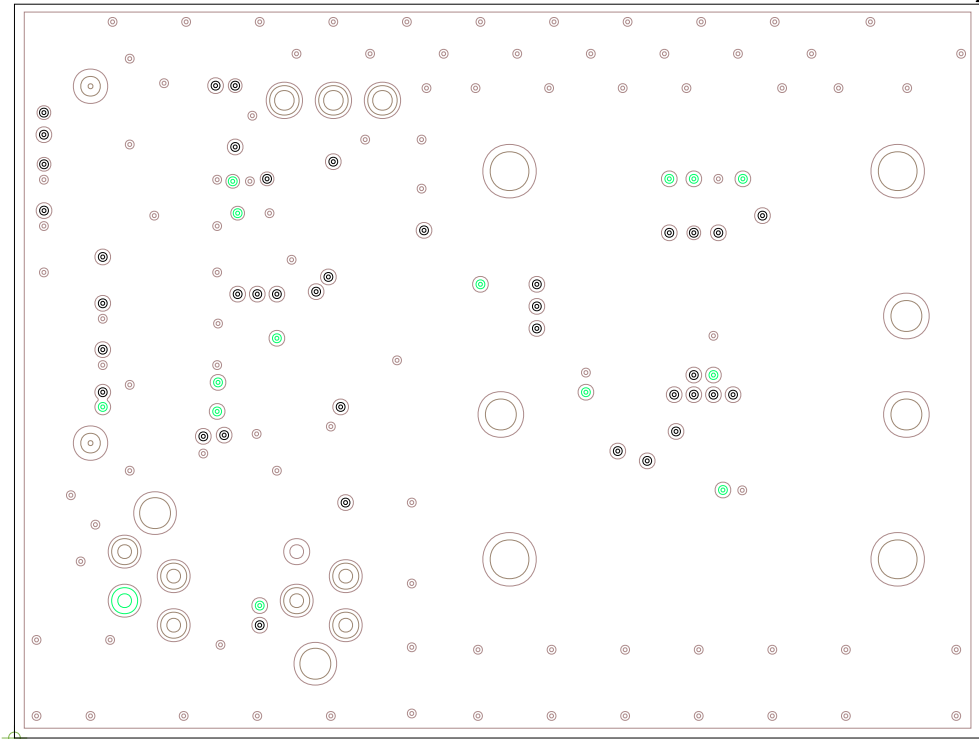


ART FILM - L3_POWER

NXP SEMICONDUCTOR 6501 WILLIAM CANNON DRIVE WEST AUSTIN. TEXAS 78735 USA		NAME MEMORY DAUGHTER CARD	
THIS DOCUMENT CONTAINS INFORMATION PROPRIETARY TO FREESCALE AND SHALL NOT BE USED FOR ENGINEERING DESIGN PROCUREMENT OR MANUFACTURE IN WHOLE OR IN PART WITHOUT THE CONSENT OF NXP.		<input type="checkbox"/> PUBI (PUBLIC INFORMATION) <input checked="" type="checkbox"/> FIUO (NXP INTERNAL USE ONLY) <input type="checkbox"/> FCP (NXP CONFIDENTIAL PROPRIETARY)	
SHEET 6 OF 10	FILM ARTWORK LAYER03	DATE 02-15-22	NUMBER 170 - x x x x x REV A

ART FILM - L3_POWER



ART FILM - L2_GND

NXP SEMICONDUCTOR

6501 WILLIAM CANNON DRIVE WEST
AUSTIN. TEXAS 78735 USA

NAME

MEMORY DAUGHTER CARD

THIS DOCUMENT CONTAINS INFORMATION
PROPRIETARY TO FREESCALE AND SHALL
NOT BE USED FOR ENGINEERING DESIGN
PROCUREMENT OR MANUFACTURE IN WHOLE
OR IN PART WITHOUT THE CONSENT OF
NXP.

___ PUBI (PUBLIC INFORMATION)

X FIUO (NXP INTERNAL USE ONLY)

___ FCP (NXP CONFIDENTIAL PROPRIETARY)

SHEET
5 OF 10

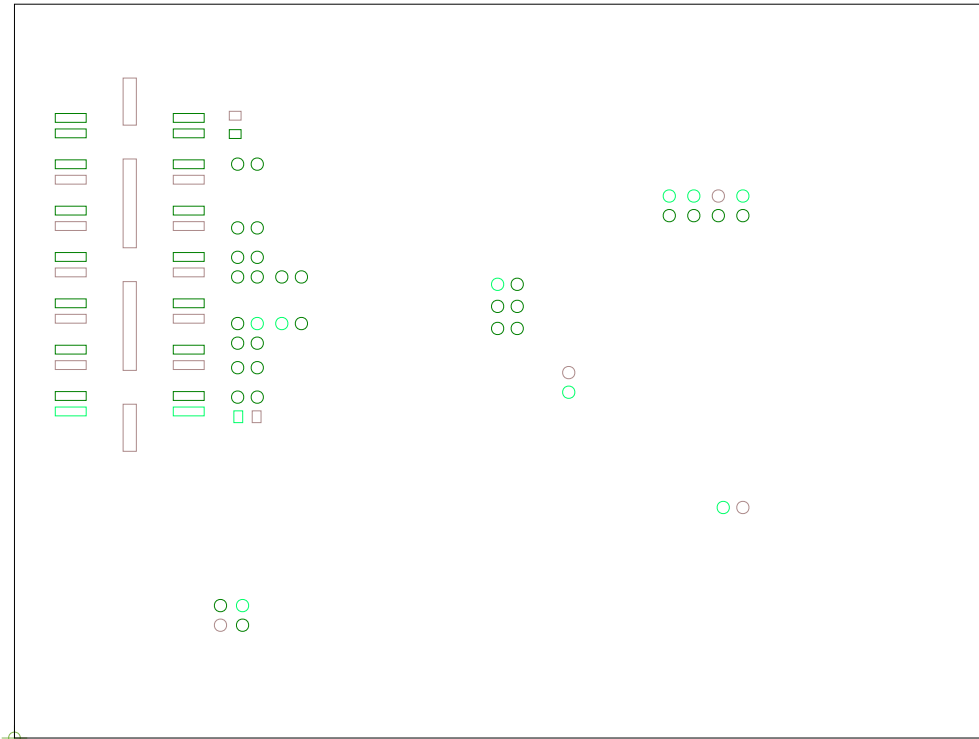
FILM ARTWORK LAYER02

DATE
02-15-22

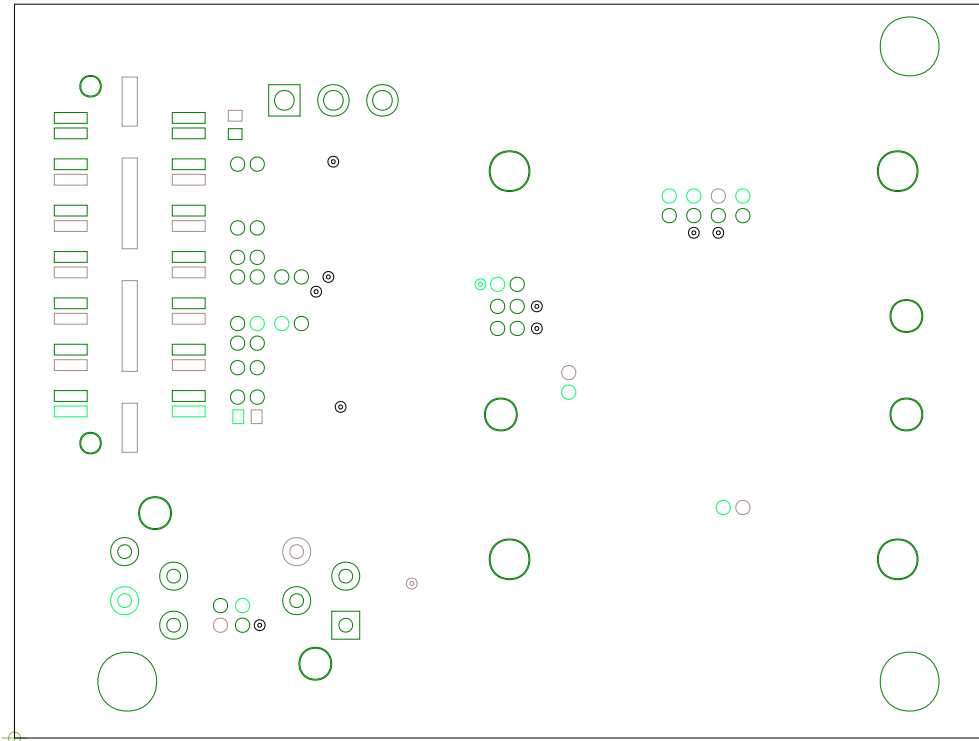
NUMBER
170 - x x x x x

REV A

ART FILM - L2_GND



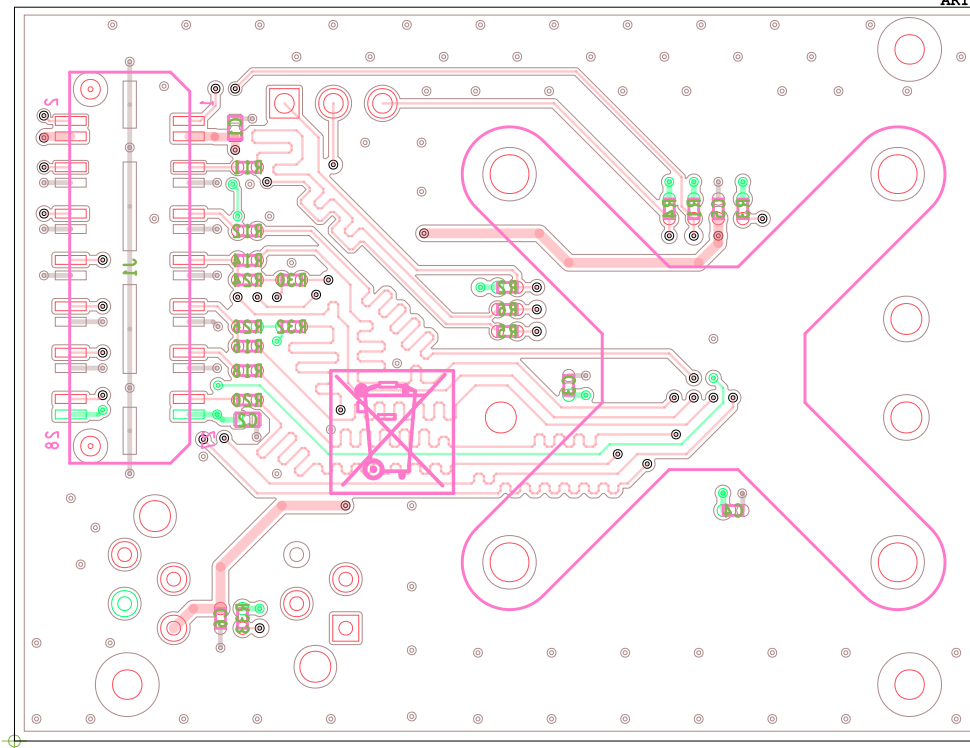
NXP SEMICONDUCTOR 6501 WILLIAM CANNON DRIVE WEST AUSTIN. TEXAS 78735 USA		NAME MEMORY DAUGHTER CARD	
THIS DOCUMENT CONTAINS INFORMATION PROPRIETARY TO FREESCALE AND SHALL NOT BE USED FOR ENGINEERING DESIGN PROCUREMENT OR MANUFACTURE IN WHOLE OR IN PART WITHOUT THE CONSENT OF NXP.		<input type="checkbox"/> PUBI (PUBLIC INFORMATION) <input checked="" type="checkbox"/> FIUO (NXP INTERNAL USE ONLY) <input type="checkbox"/> FCP (NXP CONFIDENTIAL PROPRIETARY)	
SHEET 10 OF 10	FILM PASTEMASK_BOTTOM	DATE 02-15-22	NUMBER 170 - x x x x x REV A



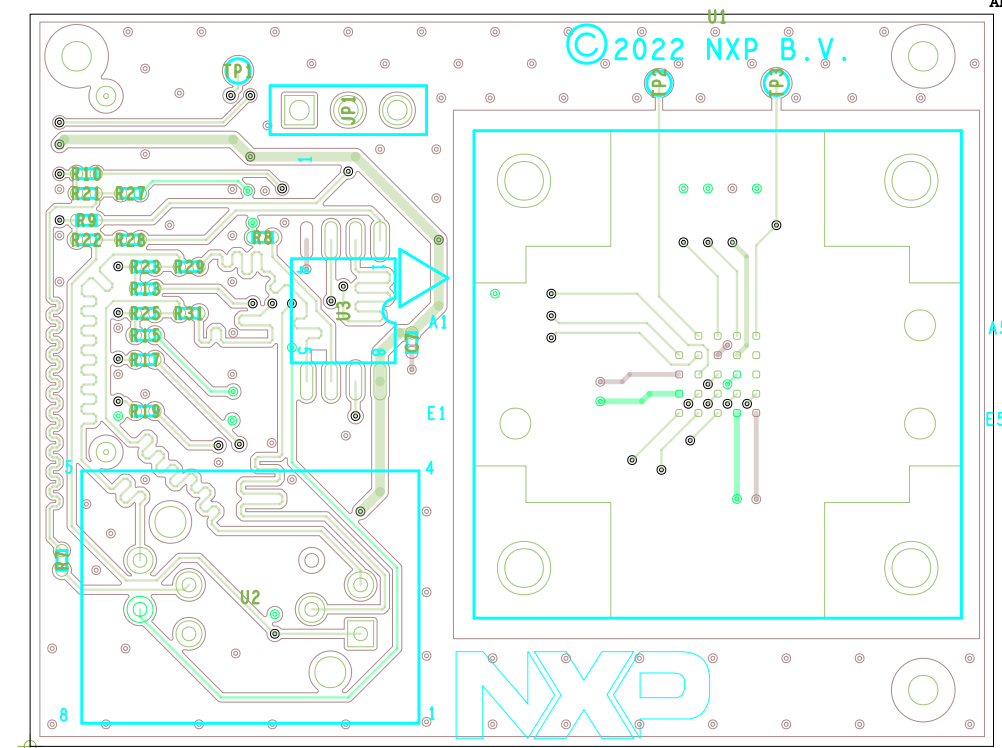
ART FILM - SSM

NXP SEMICONDUCTOR 6501 WILLIAM CANNON DRIVE WEST AUSTIN. TEXAS 78735 USA		NAME MEMORY DAUGHTER CARD	
THIS DOCUMENT CONTAINS INFORMATION PROPRIETARY TO FREESCALE AND SHALL NOT BE USED FOR ENGINEERING DESIGN PROCUREMENT OR MANUFACTURE IN WHOLE OR IN PART WITHOUT THE CONSENT OF NXP.		<input type="checkbox"/> PUBI (PUBLIC INFORMATION) <input checked="" type="checkbox"/> FIUO (NXP INTERNAL USE ONLY) <input type="checkbox"/> FCP (NXP CONFIDENTIAL PROPRIETARY)	
SHEET 8 OF 10	FILM SOLDMASK BOTTOM	DATE 02-15-22	NUMBER 170 - x x x x x REV A

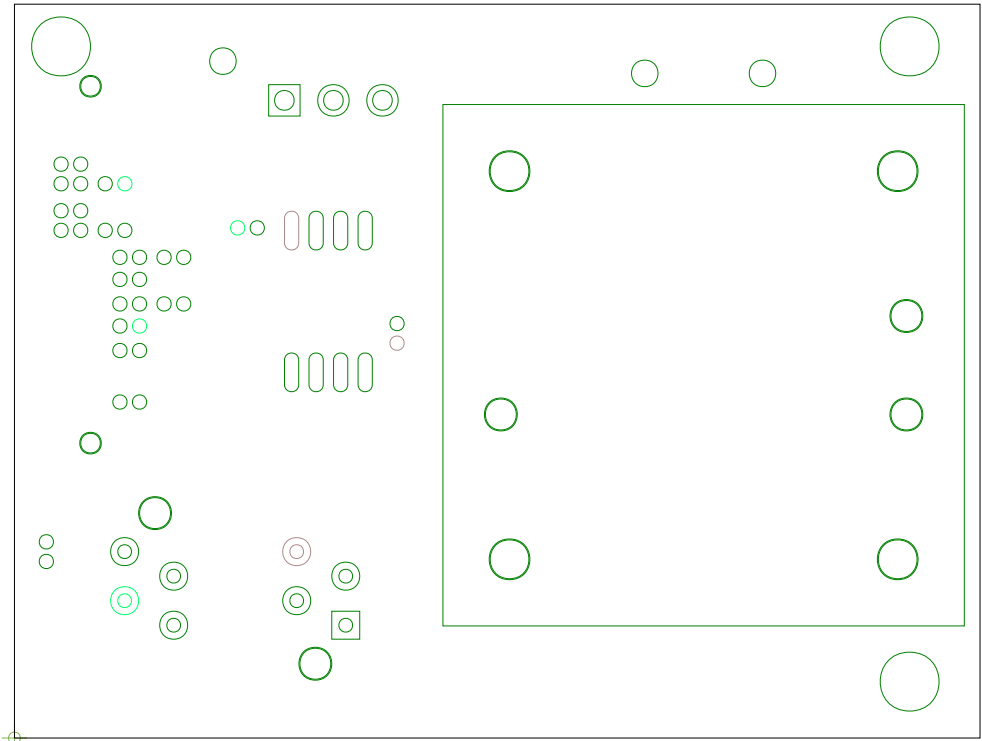
ART FILM - SSM



NXP SEMICONDUCTOR 6501 WILLIAM CANNON DRIVE WEST AUSTIN, TEXAS 78735 USA		NAME MEMORY DAUGHTER CARD	
THIS DOCUMENT CONTAINS INFORMATION PROPRIETARY TO FREESCALE AND SHALL NOT BE USED FOR ENGINEERING DESIGN PROCUREMENT OR MANUFACTURE IN WHOLE OR IN PART WITHOUT THE CONSENT OF NXP.		___ PUBI (PUBLIC INFORMATION) <u>X</u> FIUO (NXP INTERNAL USE ONLY) ___ FCP (NXP CONFIDENTIAL PROPRIETARY)	
SHEET 7 OF 10	FILM ARTWORK BOTTOM	DATE 02-15-22	NUMBER 170 - x x x x x REV A



NXP SEMICONDUCTOR 6501 WILLIAM CANNON DRIVE WEST AUSTIN, TEXAS 78735 USA		NAME MEMORY DAUGHTER CARD	
THIS DOCUMENT CONTAINS INFORMATION PROPRIETARY TO FREESCALE AND SHALL NOT BE USED FOR ENGINEERING DESIGN PROCUREMENT OR MANUFACTURE IN WHOLE OR IN PART WITHOUT THE CONSENT OF NXP.			
		___ PUBLI (PUBLIC INFORMATION) _X_ FIUO (NXP INTERNAL USE ONLY) ___ FCP (NXP CONFIDENTIAL PROPRIETARY)	
SHEET 4 OF 10	FILM ARTWORK TOP	DATE 02-15-22	NUMBER 170 - x x x x x REV A



ART FILM - PSM

NXP SEMICONDUCTOR

6501 WILLIAM CANNON DRIVE WEST
AUSTIN. TEXAS 78735 USA

NAME

MEMORY DAUGHTER CARD

THIS DOCUMENT CONTAINS INFORMATION
PROPRIETARY TO FREESCALE AND SHALL
NOT BE USED FOR ENGINEERING DESIGN
PROCUREMENT OR MANUFACTURE IN WHOLE
OR IN PART WITHOUT THE CONSENT OF
NXP.

___ PUBI (PUBLIC INFORMATION)

X FIUO (NXP INTERNAL USE ONLY)

___ FCP (NXP CONFIDENTIAL PROPRIETARY)

SHEET
3 OF 10

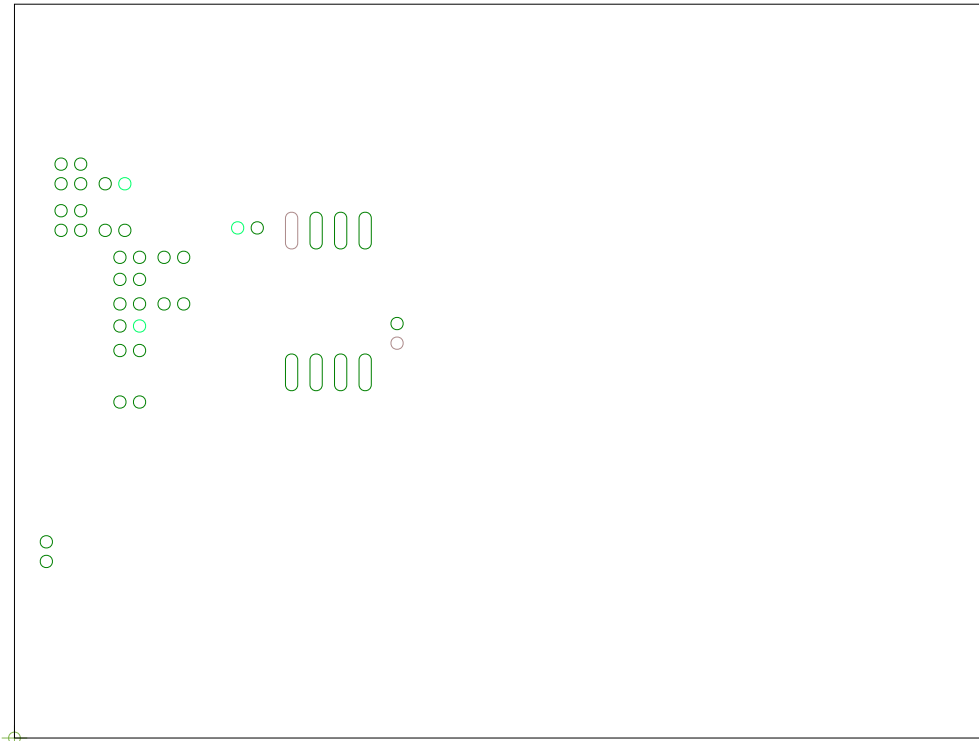
FILM
SOLDMASK TOP

DATE
02-15-22

NUMBER
170 - x x x x x

REV A

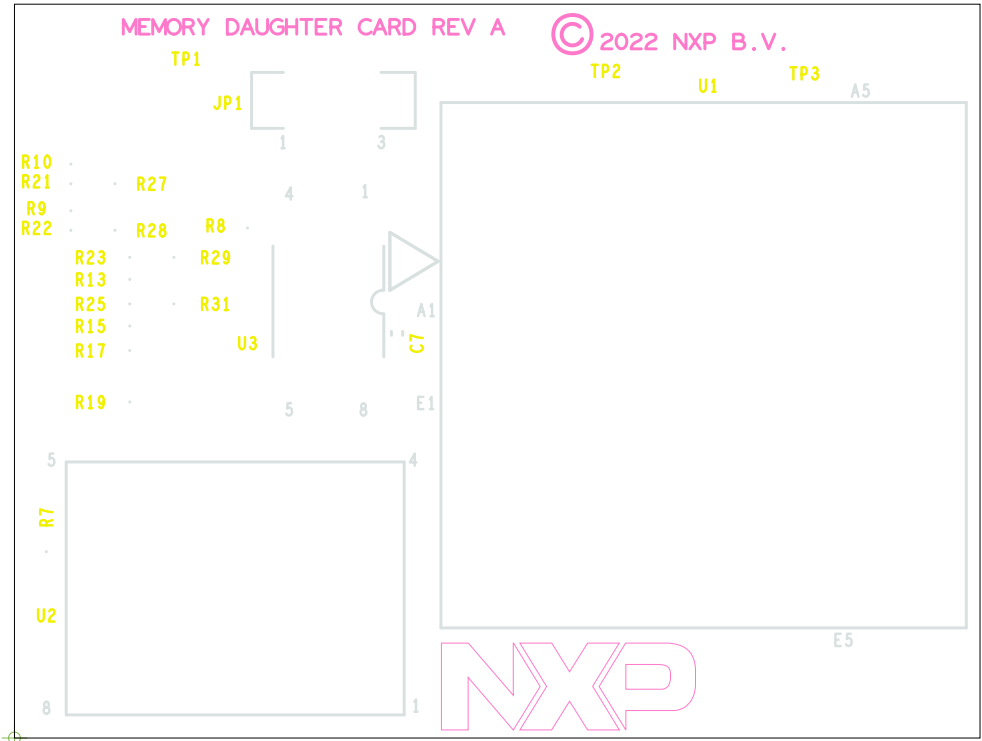
ART FILM - PSM



ART FILM - PSP

NXP SEMICONDUCTOR 6501 WILLIAM CANNON DRIVE WEST AUSTIN. TEXAS 78735 USA		NAME MEMORY DAUGHTER CARD	
THIS DOCUMENT CONTAINS INFORMATION PROPRIETARY TO FREESCALE AND SHALL NOT BE USED FOR ENGINEERING DESIGN PROCUREMENT OR MANUFACTURE IN WHOLE OR IN PART WITHOUT THE CONSENT OF NXP.		<input type="checkbox"/> PUBI (PUBLIC INFORMATION) <input checked="" type="checkbox"/> FIUO (NXP INTERNAL USE ONLY) <input type="checkbox"/> FCP (NXP CONFIDENTIAL PROPRIETARY)	
SHEET 1 OF 10	FILM PASTEMASK_TOP	DATE 02-15-22	NUMBER 170 - x x x x x REV A

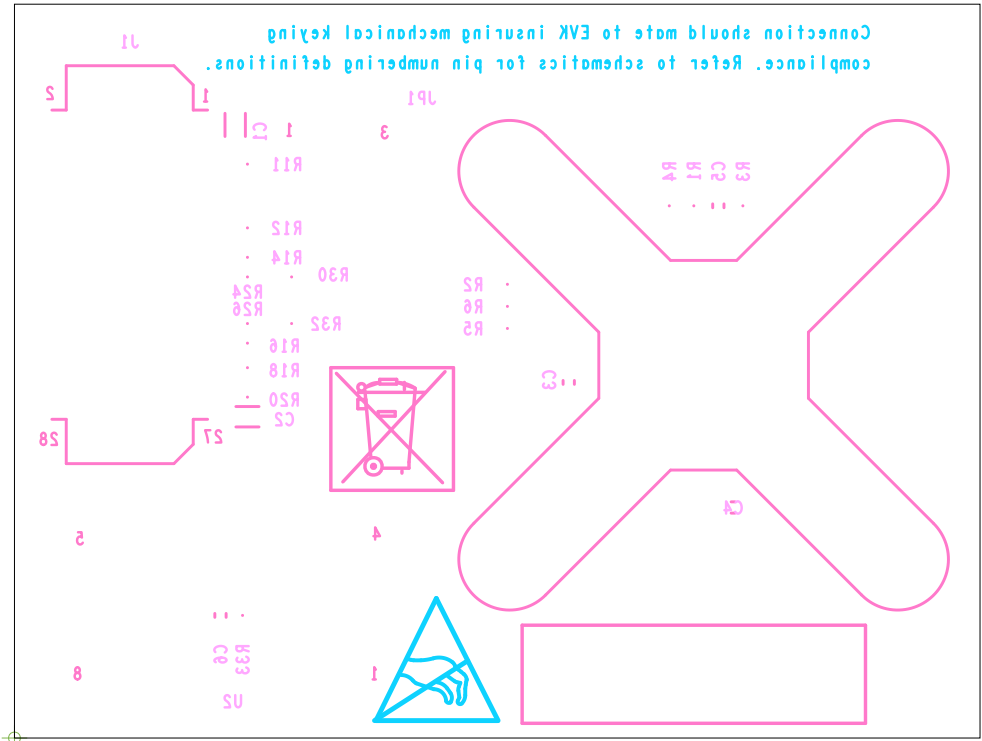
ART FILM - PSP



ART FILM - PSS

NXP SEMICONDUCTOR 6501 WILLIAM CANNON DRIVE WEST AUSTIN, TEXAS 78735 USA		NAME MEMORY DAUGHTER CARD	
THIS DOCUMENT CONTAINS INFORMATION PROPRIETARY TO FREESCALE AND SHALL NOT BE USED FOR ENGINEERING DESIGN PROCUREMENT OR MANUFACTURE IN WHOLE OR IN PART WITHOUT THE CONSENT OF NXP.		<input type="checkbox"/> PUBI (PUBLIC INFORMATION)	
		<input checked="" type="checkbox"/> FIUO (NXP INTERNAL USE ONLY)	
		<input type="checkbox"/> FCP (NXP CONFIDENTIAL PROPRIETARY)	
SHEET 2 OF 10	FILM SILKSCREEN TOP	DATE 02-15-22	NUMBER 170 - x x x x x REV A

ART FILM - PSS



ART FILM - SSS

NXP SEMICONDUCTOR

6501 WILLIAM CANNON DRIVE WEST
AUSTIN, TEXAS 78735 USA

NAME

MEMORY DAUGHTER CARD

THIS DOCUMENT CONTAINS INFORMATION
PROPRIETARY TO FREESCALE AND SHALL
NOT BE USED FOR ENGINEERING DESIGN
PROCUREMENT OR MANUFACTURE IN WHOLE
OR IN PART WITHOUT THE CONSENT OF
NXP.

___ PUBI (PUBLIC INFORMATION)

X FIUO (NXP INTERNAL USE ONLY)

___ FCP (NXP CONFIDENTIAL PROPRIETARY)

SHEET
9 OF 10

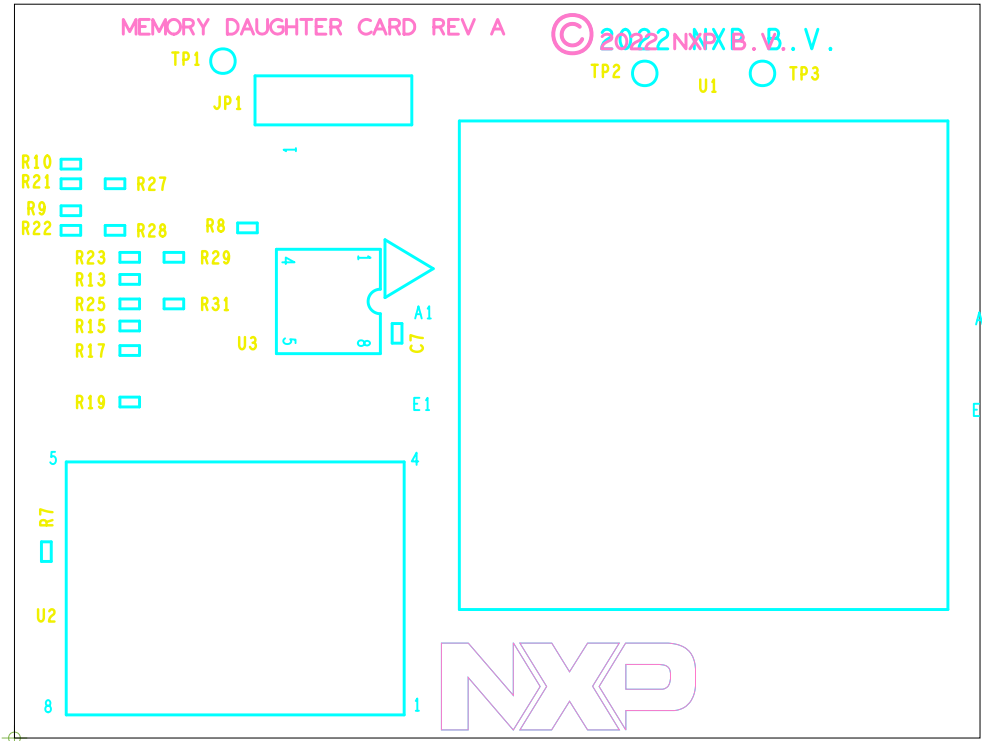
FILM SILKSCREEN BOTTOM

DATE
02-15-22

NUMBER
170 - x x x x x

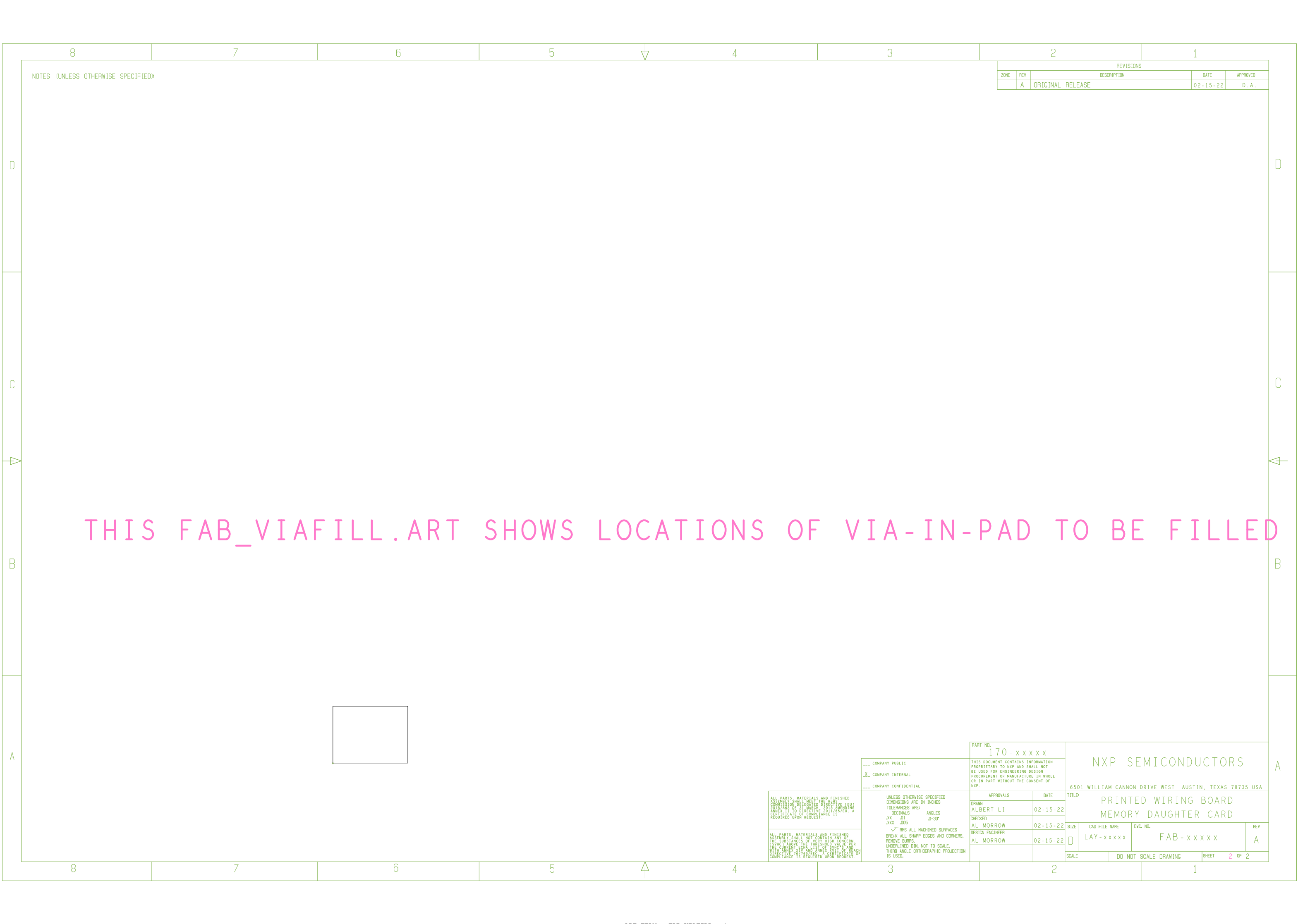
REV A

ART FILM - SSS



NXP SEMICONDUCTOR 6501 WILLIAM CANNON DRIVE WEST AUSTIN, TEXAS 78735 USA		NAME MEMORY DAUGHTER CARD	
THIS DOCUMENT CONTAINS INFORMATION PROPRIETARY TO FREESCALE AND SHALL NOT BE USED FOR ENGINEERING DESIGN PROCUREMENT OR MANUFACTURE IN WHOLE OR IN PART WITHOUT THE CONSENT OF NXP.		<input type="checkbox"/> PUBI (PUBLIC INFORMATION) <input checked="" type="checkbox"/> FIUO (NXP INTERNAL USE ONLY) <input type="checkbox"/> FCP (NXP CONFIDENTIAL PROPRIETARY)	
SHEET OF 10	FILM	DATE 02-15-22	NUMBER 170 - x x x x x REV A

ART FILM - PAS



NOTES (UNLESS OTHERWISE SPECIFIED):

REVISIONS				
ZONE	REV	DESCRIPTION	DATE	APPROVED
	A	ORIGINAL RELEASE	02-15-22	D. A.

THIS FAB_VIAFILL.ART SHOWS LOCATIONS OF VIA-IN-PAD TO BE FILLED

ALL PARTS, MATERIALS AND FINISHED ASSEMBLY SHALL MEET THE R&H COMMISSION DELEGATED DIRECTIVE (EU) 2015/493 OF 31 MARCH 2015 AMENDING ANNEX II TO DIRECTIVE 2011/65/EU. A CERTIFICATE OF COMPLIANCE IS REQUIRED UPON REQUEST.

ALL PARTS, MATERIALS AND FINISHED ASSEMBLY SHALL NOT CONTAIN ANY OF THE SUBSTANCES OF VERY HIGH CONCERN (SVHC) ABOVE THE THRESHOLD VALUE PER THE CURRENT ECHA LIST OF SVHC'S AND WITH ANNEX II IV AND ANNEX II VI OF REACH DIRECTIVE 76/769/EU. A CERTIFICATE OF COMPLIANCE IS REQUIRED UPON REQUEST.

UNLESS OTHERWISE SPECIFIED DIMENSIONS ARE IN INCHES
TOLERANCES ARE:
DECIMALS ANGLES
.XX .01 .0-90°
.XXX .005
✓ RNS ALL MACHINED SURFACES
BREAK ALL SHARP EDGES AND CORNERS.
REMOVE BURRS.
UNDERLINED DIM. NOT TO SCALE.
THIRD ANGLE ORTHOGRAPHIC PROJECTION IS USED.

PART NO. 170-xxxxxx		NXP SEMICONDUCTORS 6501 WILLIAM CANNON DRIVE WEST AUSTIN, TEXAS 78735 USA					
THIS DOCUMENT CONTAINS INFORMATION PROPRIETARY TO NXP AND SHALL NOT BE USED FOR ENGINEERING DESIGN PROCUREMENT OR MANUFACTURE IN WHOLE OR IN PART WITHOUT THE CONSENT OF NXP.							
APPROVALS		DATE		TITLE			
DRAWN ALBERT LI		02-15-22		PRINTED WIRING BOARD MEMORY DAUGHTER CARD			
CHECKED AL MORROW		02-15-22		SIZE	CAD FILE NAME	DWG. NO.	REV
DESIGN ENGINEER AL MORROW		02-15-22		D	LAY-xxxxxx	FAB-xxxxxx	A
				SCALE		DO NOT SCALE DRAWING	SHEET 2 OF 2