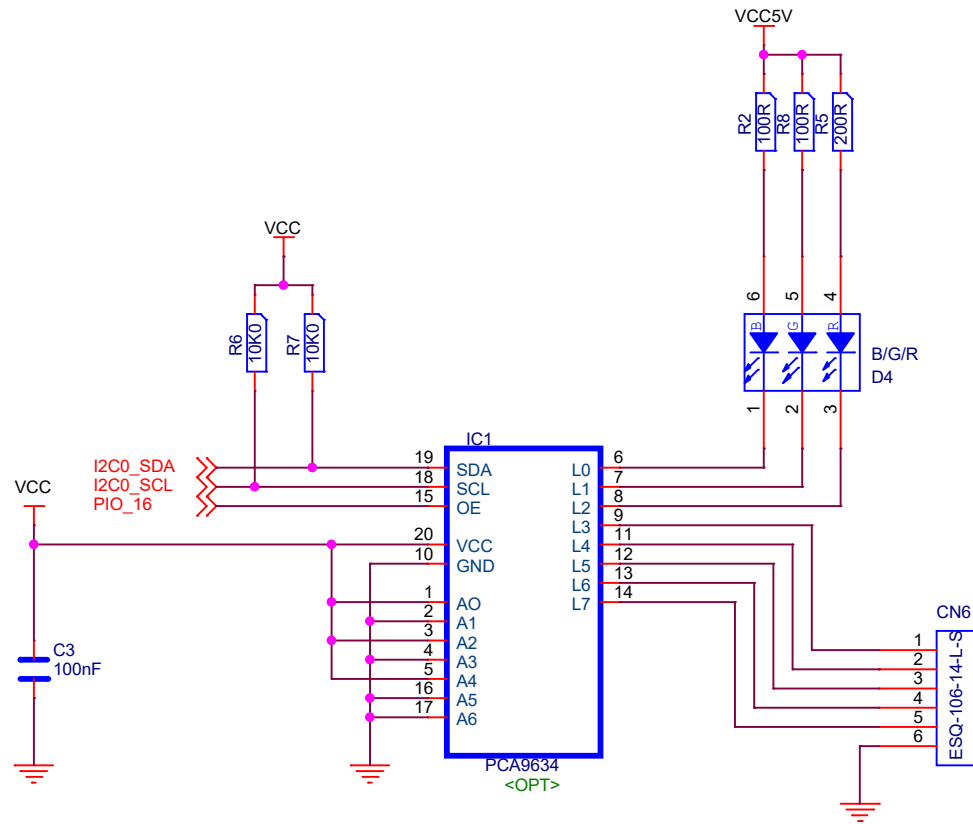
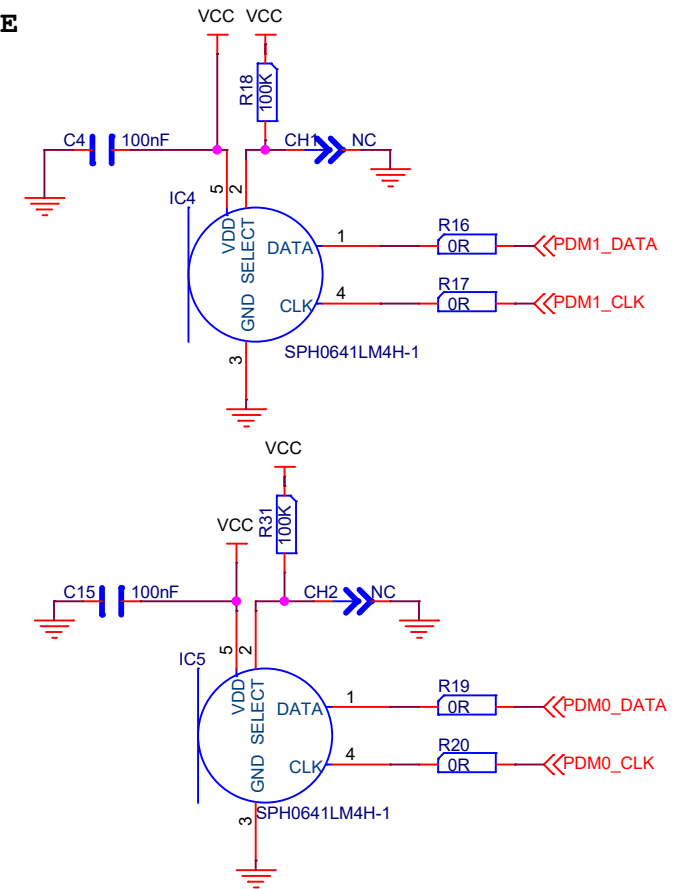


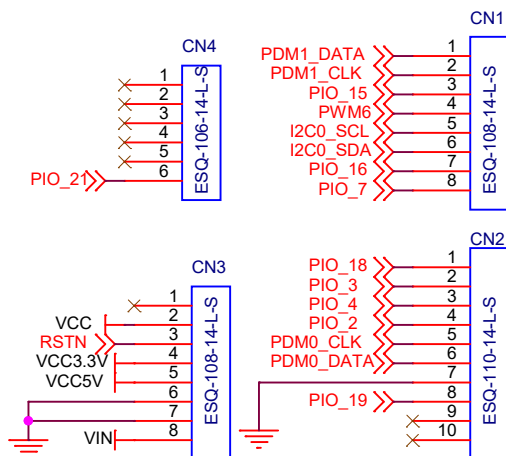
# RGB LED DRIVER



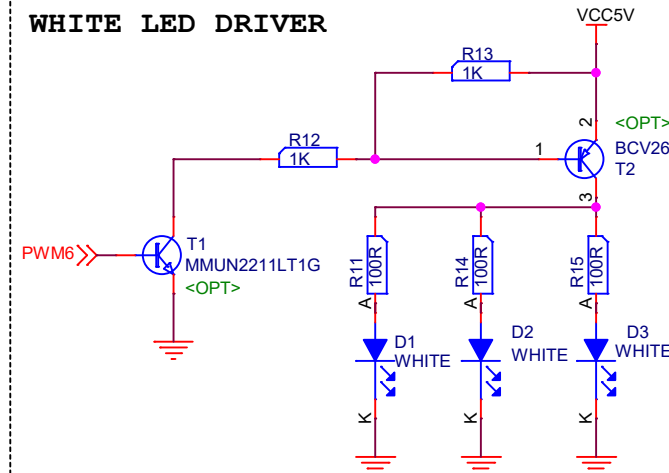
## MICROPHONE



## CONNECTORS



# WHITE LED DRIVER



6501 William Cannon Drive West  
Austin, TX 78735-8598

This document contains information proprietary to NXP and shall not be used for engineering design, procurement or manufacture in whole or in part without the express written permission of NXP Semiconductors.

© NXP SEMICONDUCTORS Classification: Public

Designer:  
SR ASCO

Drawing Title:	
----------------	--

**OM15081**

Drawn by:  
SR ASCO

Page Title:
-------------

## Audio / Light / sensors expansion board 1/2

Approved:  
M.BAUDRY

Size	A4
------	----

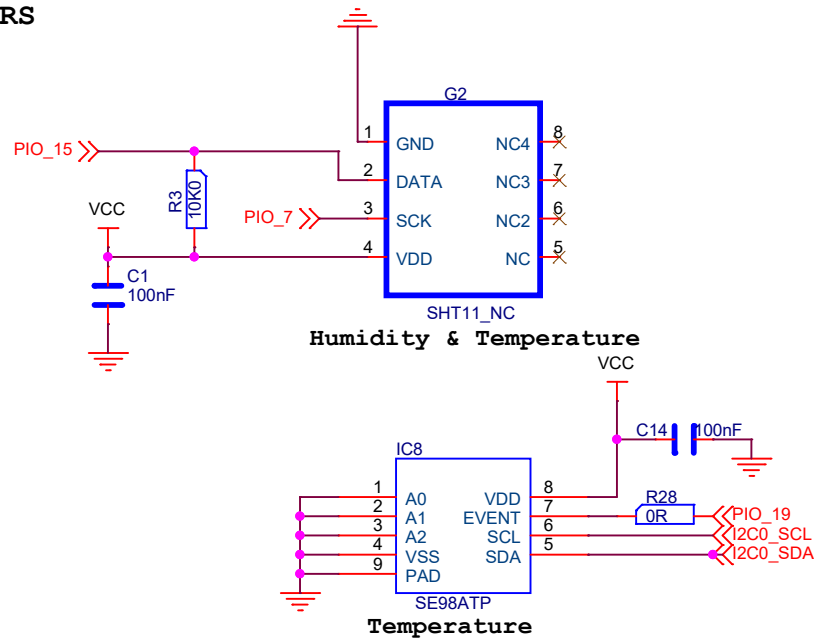
Document Number
-----------------

SCH-45627 PDF: SPF-45627

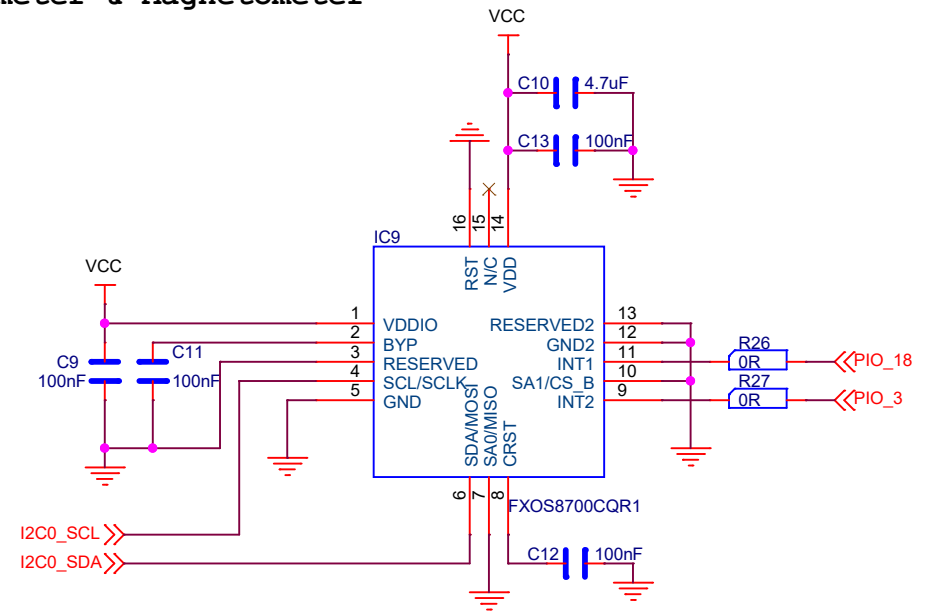
Rev  
C

Date:	Tuesday, November 12, 2019	Sheet	1	of	2
-------	----------------------------	-------	---	----	---

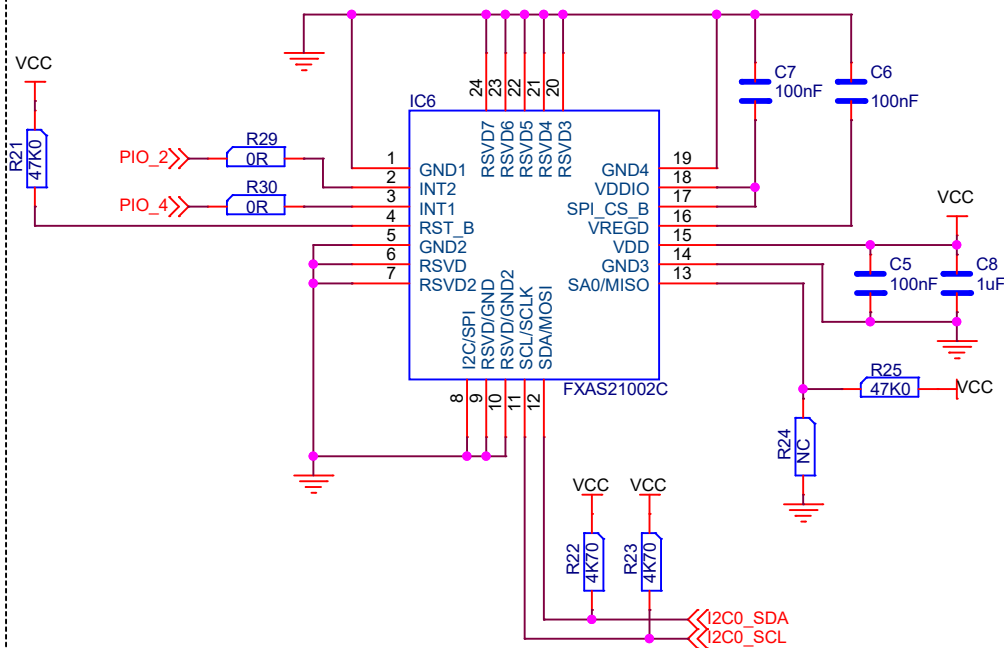
## SENSORS



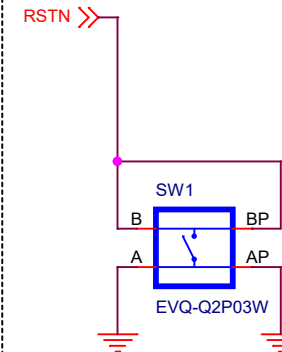
## Accelerometer & Magnetometer



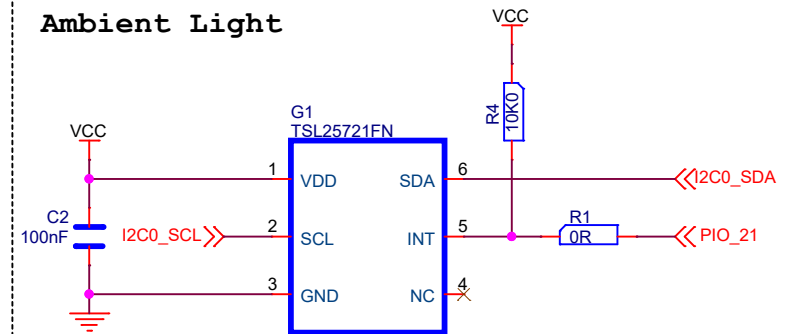
## Gyroscope



## SWITCH



## Ambient Light



Classification: Public

Drawing Title:

**OM15081**

Page Title:

**Audio / Light / sensors expansion board 2/2**

Size  
A4

Document Number

SCH-45627 PDF: SPF-45627

Rev  
C

Date: Tuesday, November 12, 2019

Sheet 2 of 2