


Table of Contents	
1	TITLE PAGE
2	NOTES
3	FRDM-SENSORS-LF

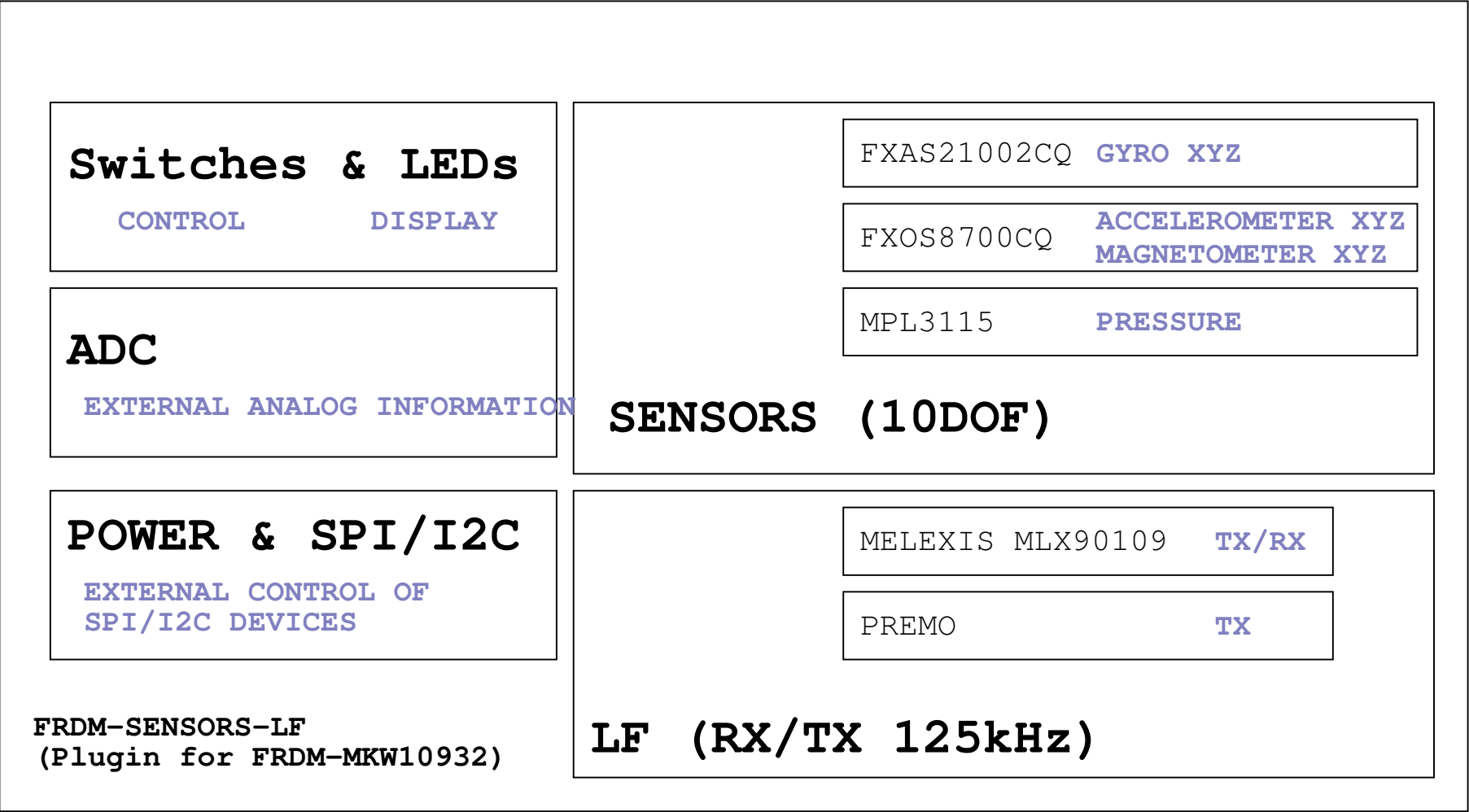
Revisions			
Rev	Description	Date	Approved
X1	DEVELOPMENT	4-DEC-15	P. BERNARD
X2	ADC5 ADDED - RELEASE FOR PROTOTYPE	10-DEC-15	P. BERNARD
X3	ADC6 & ADC7 ADDED - RELEASE FOR PROTOTYPE	10-DEC-15	P. BERNARD
A	RELEASE FOR PROTOTYPE	29-DEC-15	P. BERNARD
B	COMPATIBILITY MRB / FRDM + LAYOUT (ADC, LED6 to LED17)	7-MAR-16	P. BERNARD


FRDM-SENSORS-LF

		Analog Sensor Product Group 6501 William Cannon Drive West Austin, TX 78735-8598	
This document contains information proprietary to NXP and shall not be used for engineering design, procurement or manufacture in whole or in part without the express written permission of NXP Semiconductors.			
ICAP Classification: CP: IUO: X PUBI:			
Designer: Pascal Bernard	Drawing Title: FRDM-SENSORS-LF		
Drawn by: Pascal Bernard	Page Title: TITLE PAGE		
Approved: Pascal Bernard	Size B	Document Number SCH-29153 PDF: SPF-29153	Rev B
Date: Monday, March 14, 2016		Sheet 1 of 10	

NOTES:

FRDM-MBW10932 PTE19/I2C0_SCL	MKW01Z128 PTE19/ADC0_DM2/ ADC0_SE6a/SPI0_MISO /I2C0_SCL/SPI0_MOSI	AGM01: D15 I2C_SCL0	FRDM-MBW10932 PTD7	MKW01Z128 PTD7/SPI0_MISO/UART0_TX/SPI1_MOSI	FRDM-MBW10932: SW2
FRDM-MBW10932 PTE18/I2C0_SDA	MKW01Z128 PTE18/ADC0_DP2/ADC0_SE2/SPI0_MOSI/I2C0_SDA/SPI0_MISO	AGM01: D14 I2C_SDA0	FRDM-MBW10932 PTC2	MKW01Z128 PTC2/ADC0_SE11/TSIO_CH15/I2C1_SDA/TPM0_CH1	FRDM-MBW10932: SW3
FRDM-MBW10932 P3V3			FRDM-MBW10932 PTC1	MKW01Z128 PTC1/ADC0_SE15/TSIO_CH14/LLWU_P6/RTC_CLKIN/I2C1_SCL/TPM0_CH0	FRDM-MBW10932: XTAL_32K
FRDM-MBW10932 GND			FRDM-MBW10932 PTB1	MKW01Z128PTB1/ADC0_SE9/TSIO_CH6/I2C0_SDA/ TPM1_CH1	FRDM-MBW10932: RGB_G (TPM1_CH1)
FRDM-MBW10932 PTD5/SPI1_SCK	MKW01Z128 PTD5/ADC0_SE6b/SPI1_SCK/UART2_TX/TPM0_CH5	AGM01: GND	FRDM-MBW10932 PTB2/UART0_RTS	MKW01Z128 PTB2/ADC0_SE12/TSIO_CH7/I2C0_SCL/TPM2_CH0	
FRDM-MBW10932 PTE0/SPI1_MISO	MKW01Z128 PTE0/SPI1_MISO/UART1_TX/RTC_CLKOUT/CMP0_OUT/ I2C1_SDA	AGM01: D13 SPI_SCLK	FRDM-MBW10932 PTB17/UART0_CTS	MKW01Z128 PTB17/TSIO_CH10/SPI1_MISO/UART0_TX/TPM_CLKIN1/SPI1_MOSI	AGM01: D5 INT1_21002
FRDM-MBW10932 PTE1/SPI1_MOSI	MKW01Z128 PTE1 / SPI1_MOSI / UART1_RX /SPI1_MISO / I2C1_SCL	AGM01: D12 SA0_MISO	FRDM-MBW10932 PTA1/UART0_RX	MKW01Z128 PTA1/TSIO_CH2/UART0_RX/TPM2_CH0	AGM01: D4 INT2_8700
FRDM-MBW10932 PTD4/SPI1_PCS0	MKW01Z128 PTD4/LLWU_P14/SPI1_PCS0/UART2_RX/TPM0_CH4	AGM01: D11 SPI_MOSI	FRDM-MBW10932 PTA2/UART0_TX	MKW01Z128 PTA2/TSIO_CH3/UART0_TX/TPM2_CH1	AGM01: D2 INT1_8700
FRDM-MBW10932 PTA3/SWD_DIO	MK20DX128VFM5 Open SDA	AGM01: D10 SPI_CSB_21002			
FRDM-MBW10932 PTA0/SWD_CLK	MK20DX128VFM5 Open SDA	AGM01: D8 INT2_21002			
FRDM-MBW10932 P5-9V_VIN			FRDM-MBW10932 PTB0	MKW01Z128 PTB0/ADC0_SE8/TSIO_CH0/LLWU_P5/I2C0_SCL/ TPM1_CH0	AGM01: A5 I2C_SCL1
FRDM-MBW10932 GND	AGM01: GND		FRDM-MBW10932 PTA4/NMI	MKW01Z128 PTA4/NMI_b/TSIO_CH5/I2C1_SDA/TPM0_CH1	FRDM-MBW10932: RGB_B (TPM1_CH0)
FRDM-MBW10932 GND	AGM01: GND		FRDM-MBW10932 PTD6/LLWU_P15	MKW01Z128 PTD6/ADC0_SE7b/LLWU_P15/SPI1_MOSI/UART0_RX/SPI1_MISO	FRDM-MBW10932: SW4
FRDM-MBW10932 P5V	AGM01: VDD		FRDM-MBW10932 PTE17	MKW01Z128 PTE17/ADC0_DM1/ADC0_SE5a/SPI0_SCK/TPM_CLKIN1/UART2_RX/LPTMR0_ALT3	FRDM-MBW10932: SW1
FRDM-MBW10932 P3V3	AGM01: RST_MCU		FRDM-MBW10932 PTE16	MKW01Z128 PTE16/ADC0_DP1/ADC0_SE1/SPI0_PCS0/TPM/UART2_TX	FRDM-MBW10932: LED D8
FRDM-MBW10932 RESET_TGTMCU_B	AGM01: VDD		FRDM-MBW10932 PTA19	MKW01Z128 PTA19/XTAL0/UART1_TX/TPM_CLKIN1/LPTMR0_ALT1	FRDM-MBW10932: RGB_R
FRDM-MBW10932 1.65V - 5.5V					FRDM-MBW10932: DIO4





ICAP Classification: CP: IUO: X PUBI:

Drawing Title: **FRDM-SENSORS-LF**

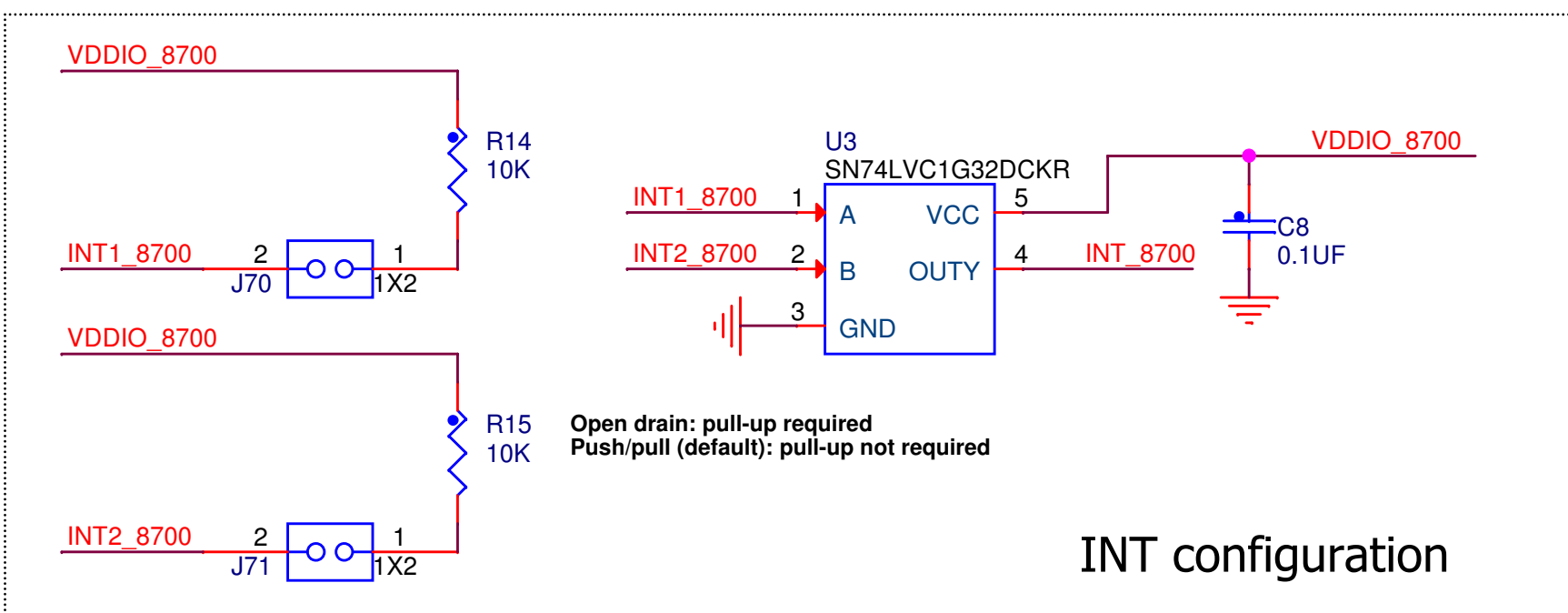
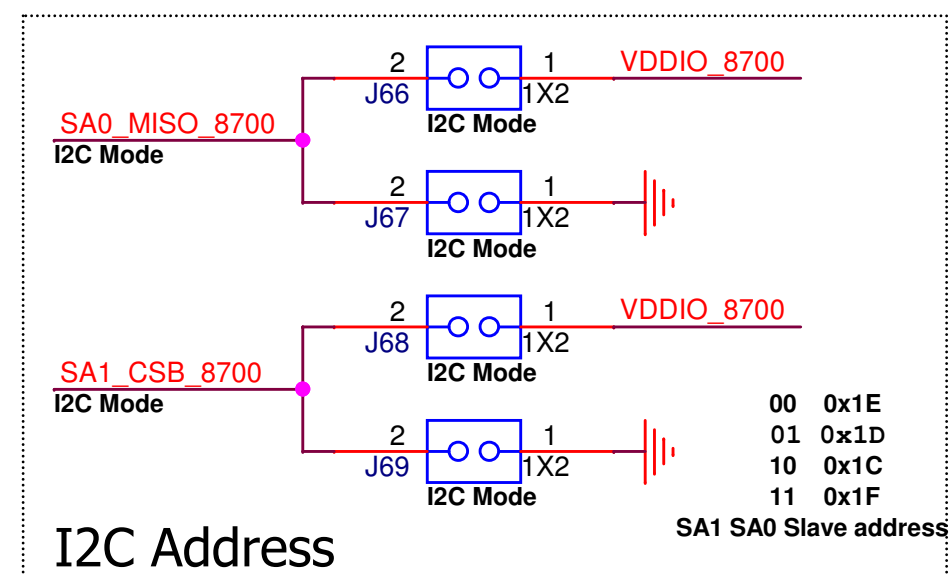
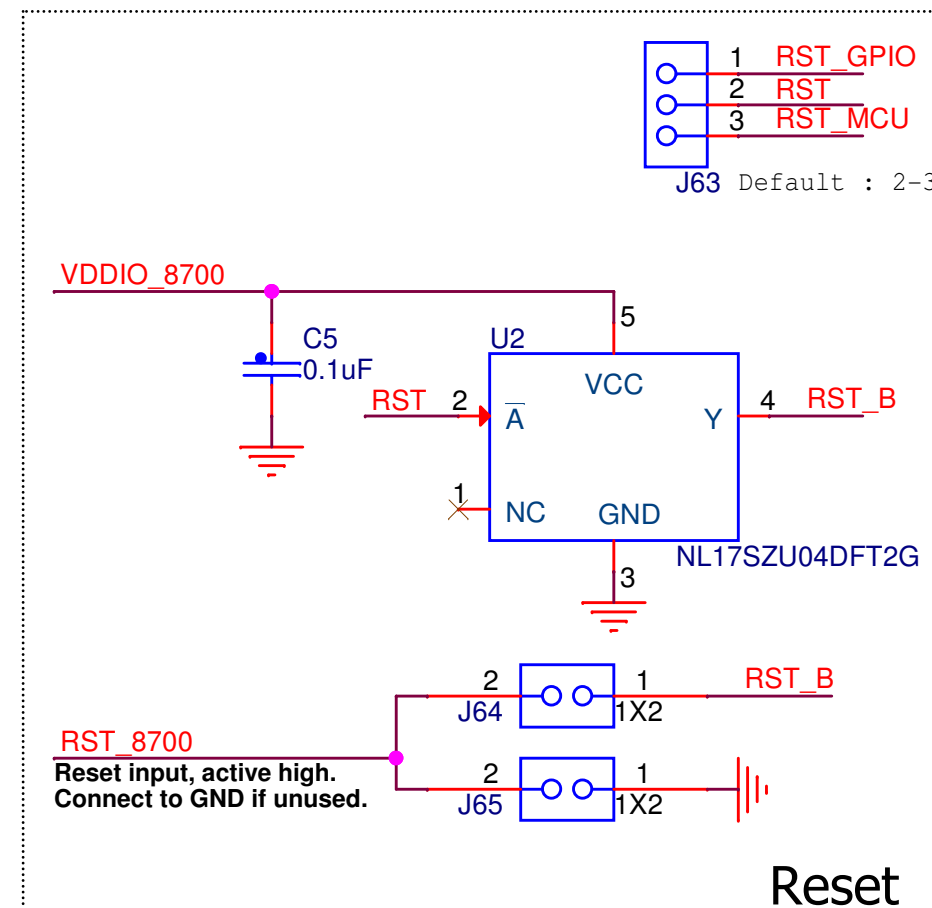
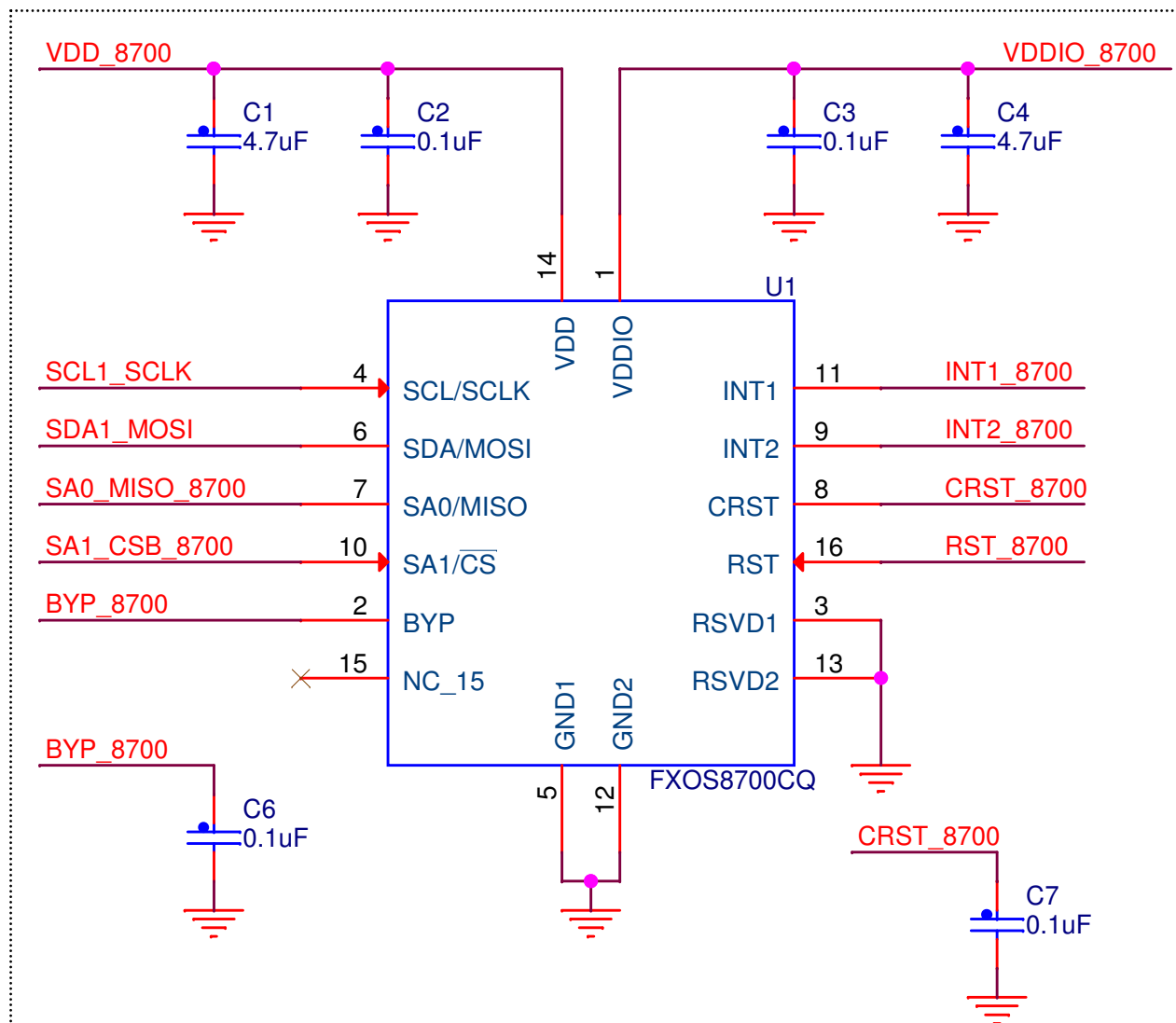
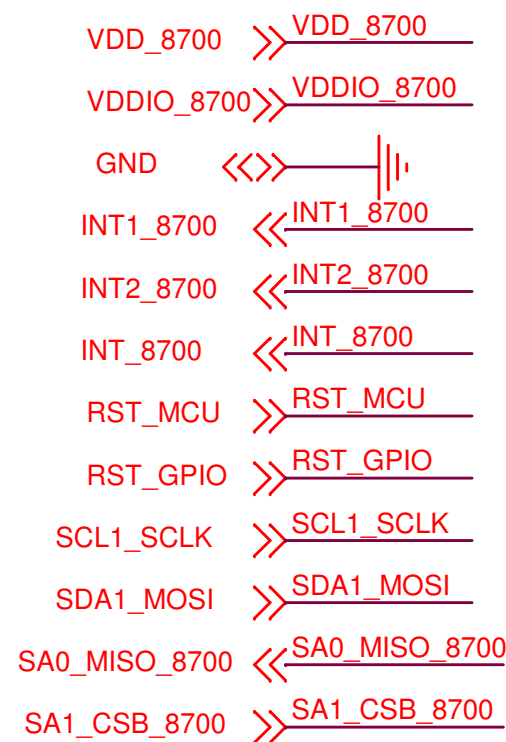
Page Title: **NOTES**

Size B

Document Number
SCH-29153 PDF: SPF-29153

Rev B

Date: Monday, March 14, 2016 Sheet 2 of 10



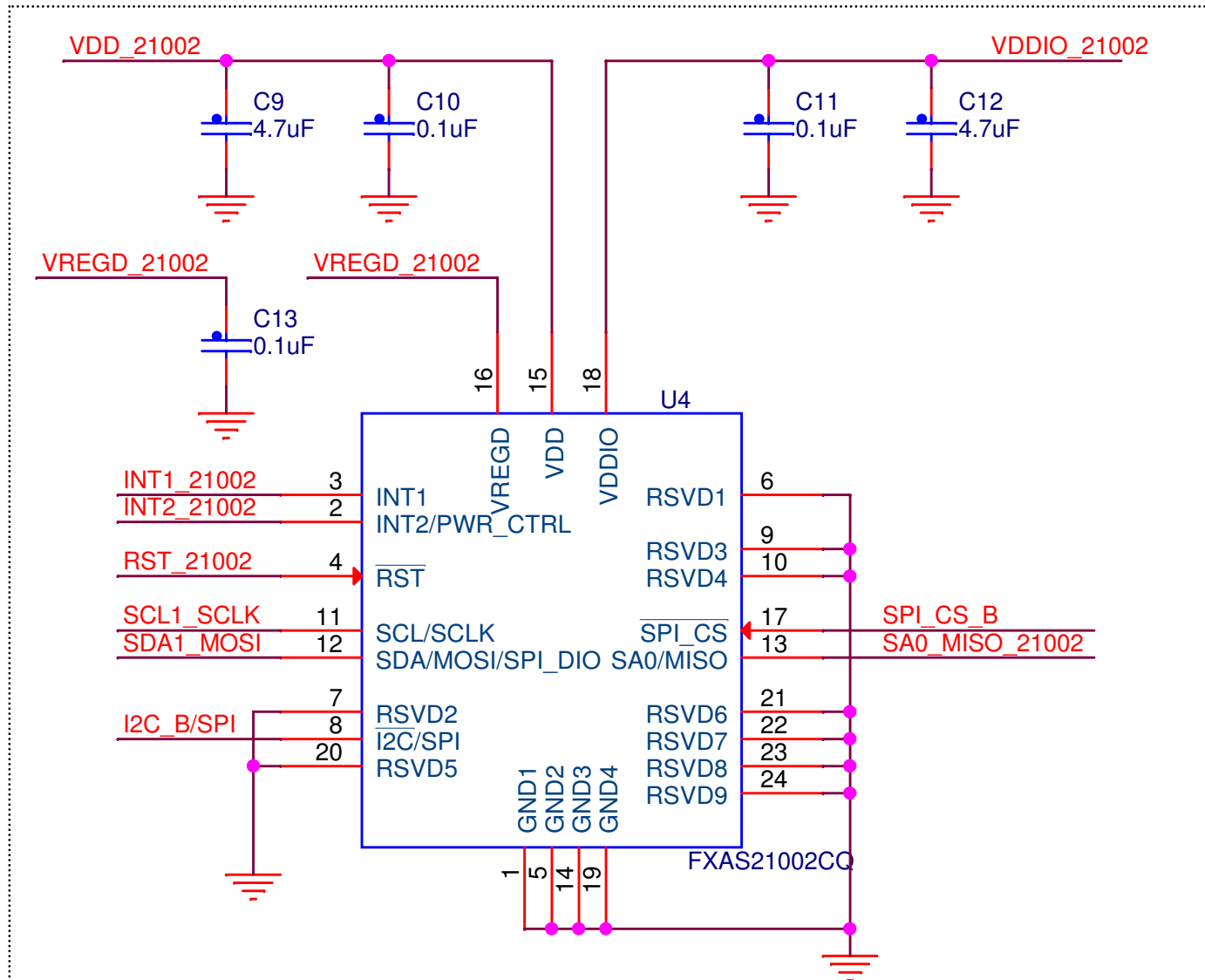
ICAP Classification: CP: ___ IUO: X PUBI: ___

Drawing Title: **FRDM-SENSORS-LF**

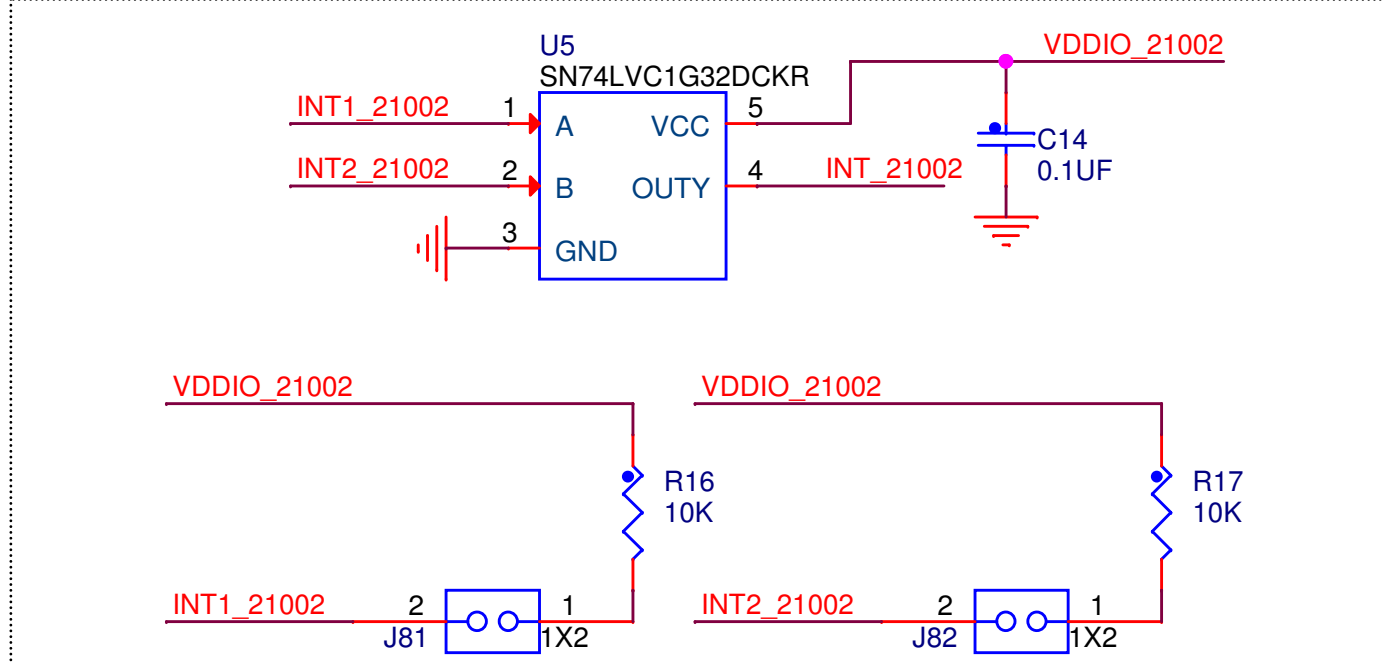
Page Title: **FXOS8700CQ**

Size A Document Number SCH-29153 PDF: SPF-29153 Rev B

Date: Monday, March 14, 2016 Sheet 4 of 10

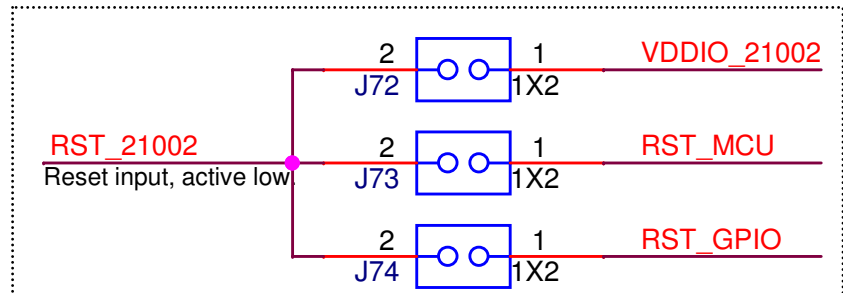


FXAS21002CQ 3 Axis Gyroscope

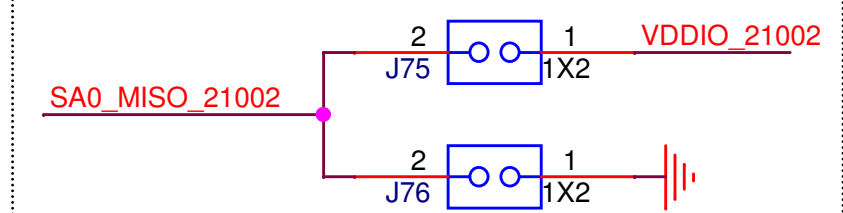


INT configuration

Open drain: pull-up required
Push/pull (default): pull-up not required

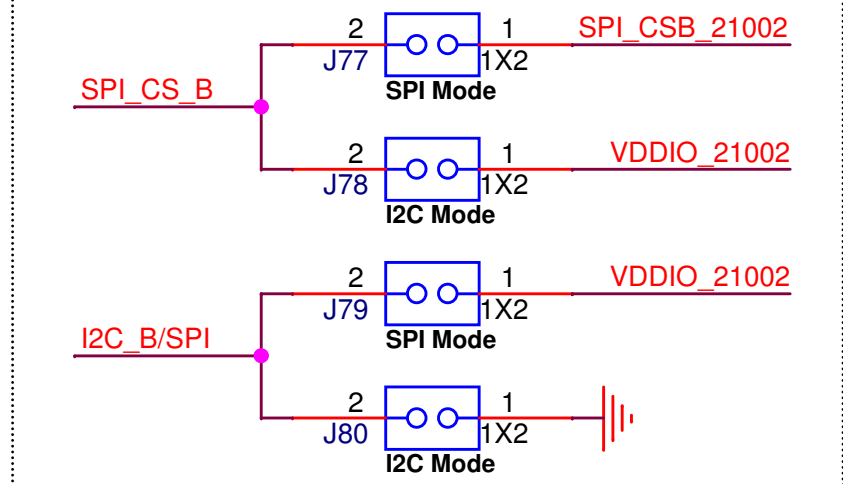


Reset

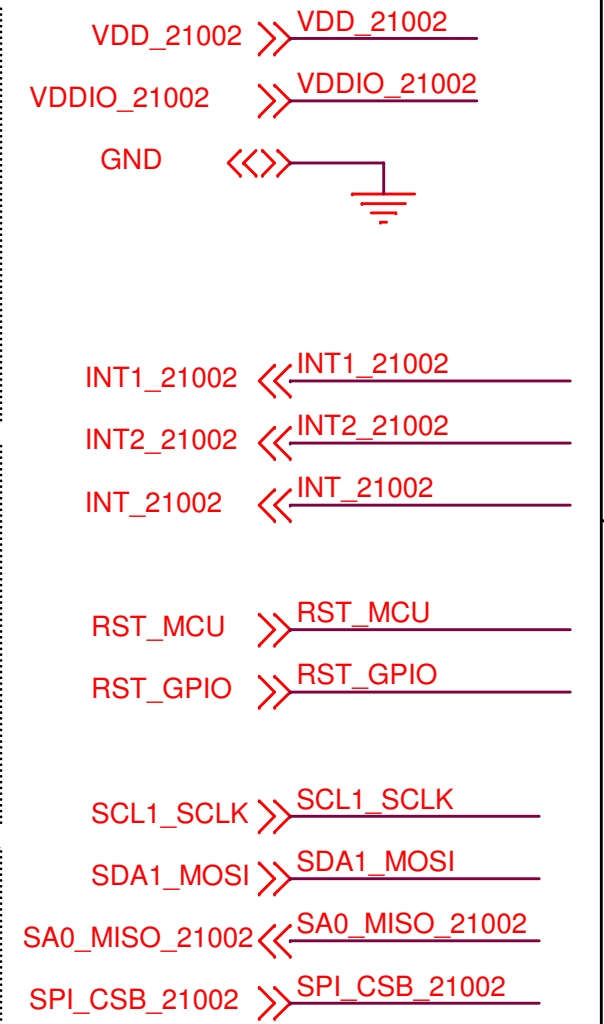


I2C Address

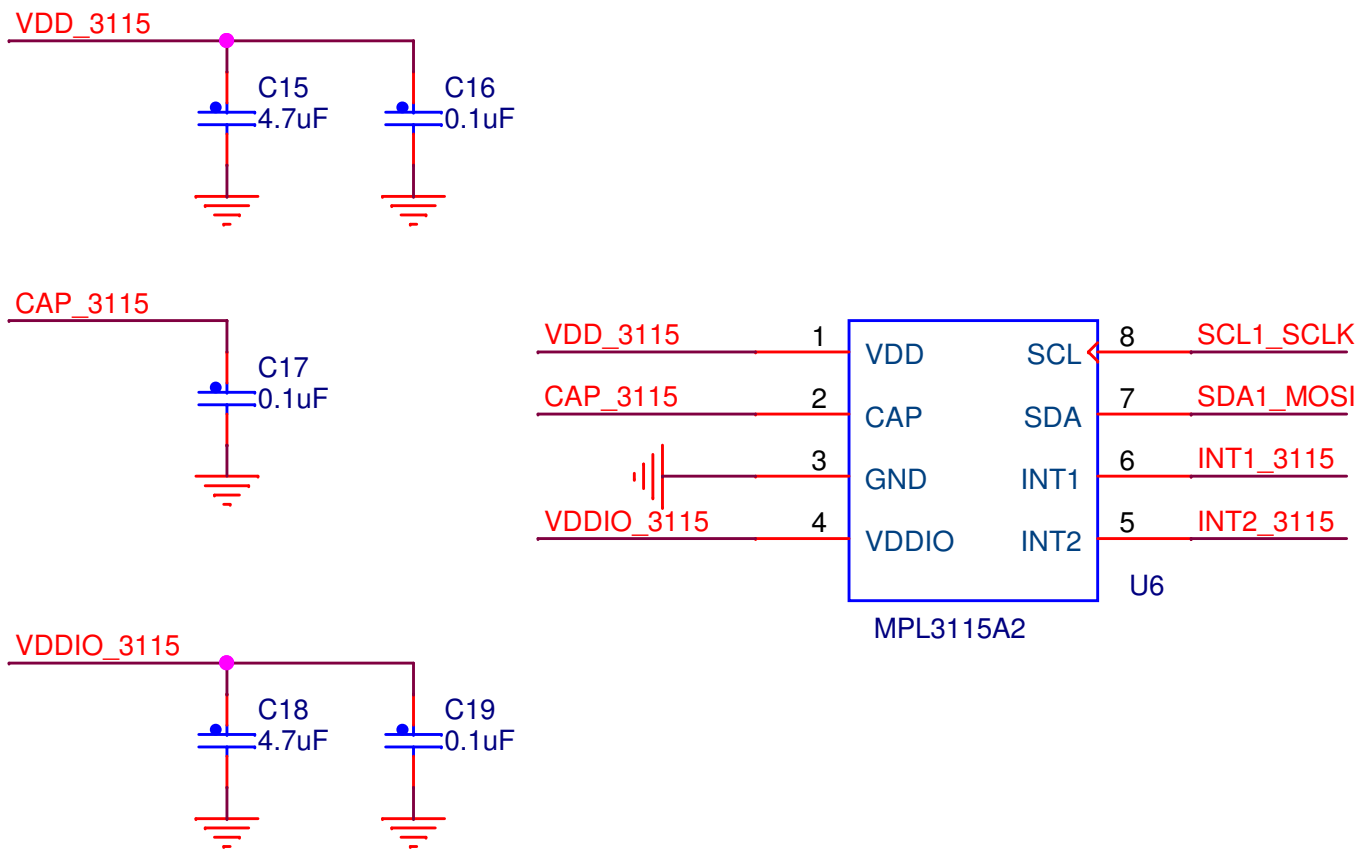
SA0
SA0 = 0 0x20
SA0 = 1 0x21



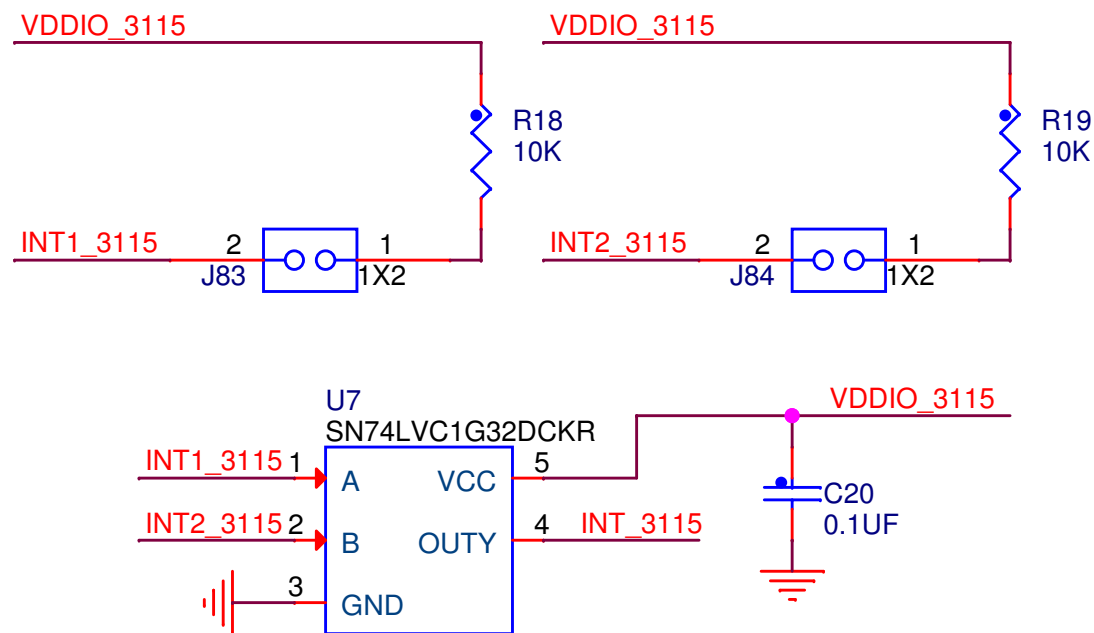
SPI/I2C Mode



ICAP Classification: CP: ___ IUO: X PUBL: ___			
Drawing Title: FRDM-SENSORS-LF			
Page Title: FXAS21002CQ			
Size A	Document Number SCH-29153 PDF: SPF-29153		Rev B
Date:	Monday, March 14, 2016	Sheet 5 of 10	

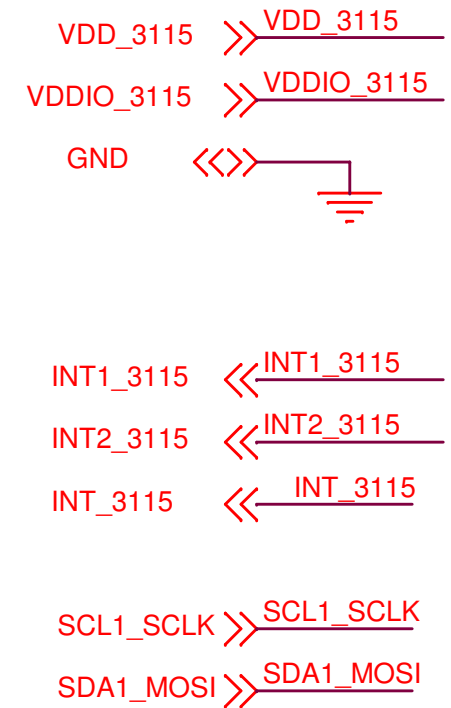


MPL3115
Precision Altimeter



INT configuration

Open drain: pull-up required
Push/pull (default): pull-up not required



ICAP Classification: CP: ___ IUO: X PUBL: ___

Drawing Title:

FRDM-SENSORS-LF

Page Title:

MPL3115

Size
A

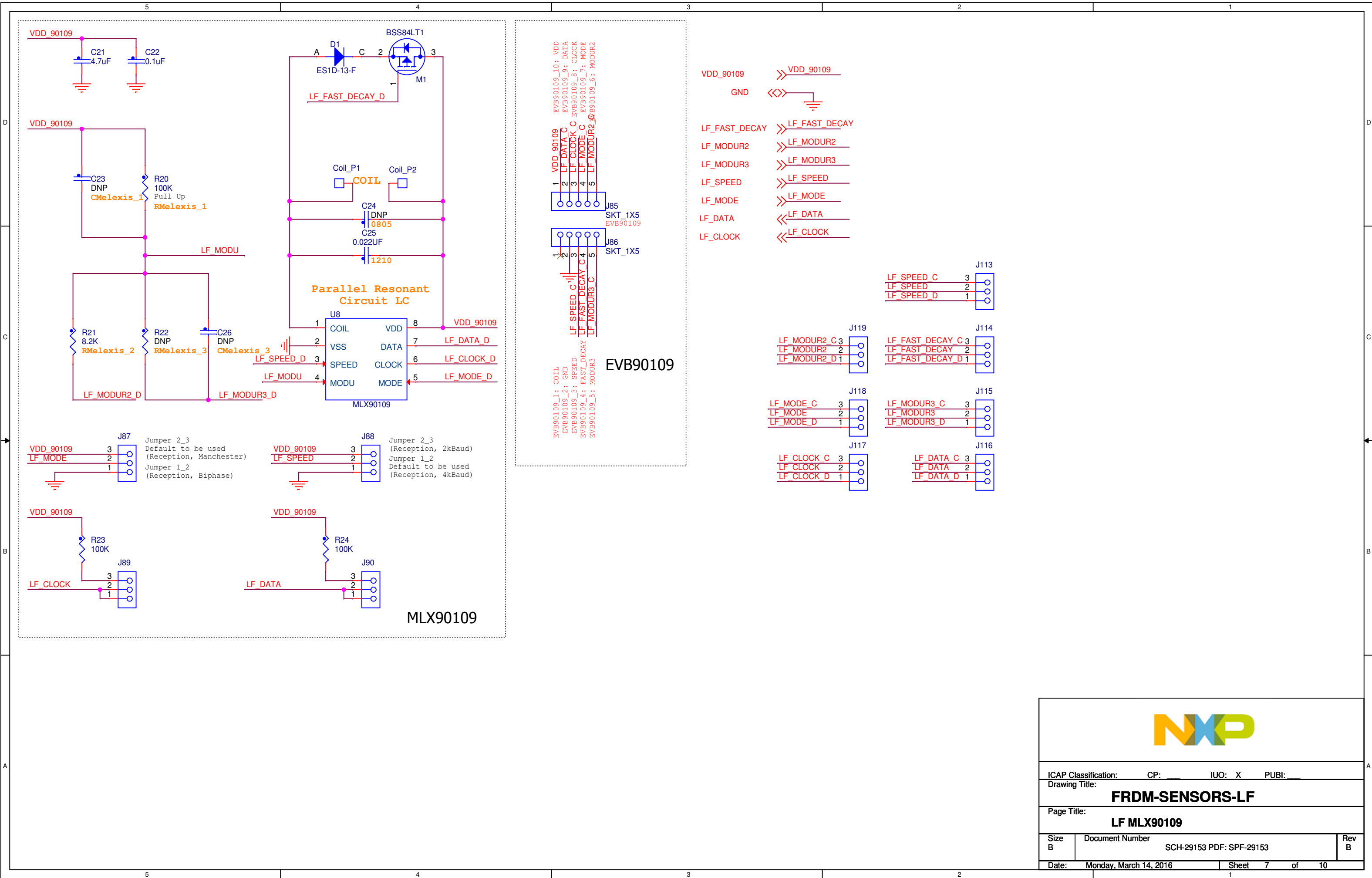
Document Number

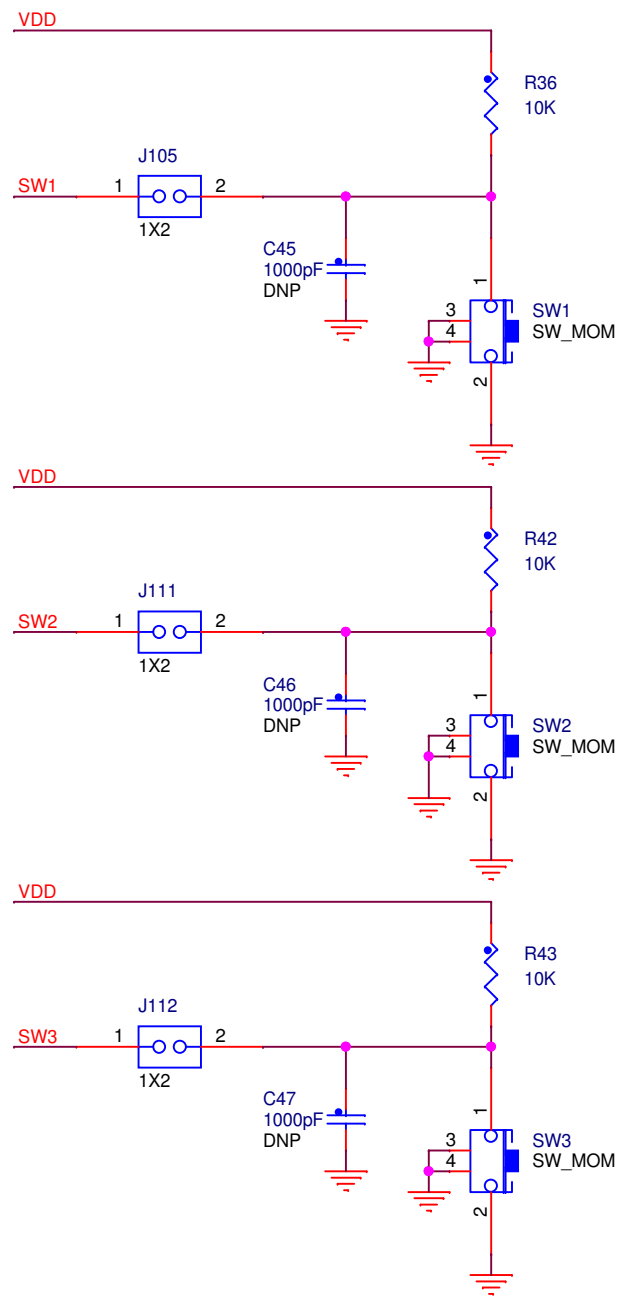
SCH-29153 PDF: SPF-29153

Rev
B

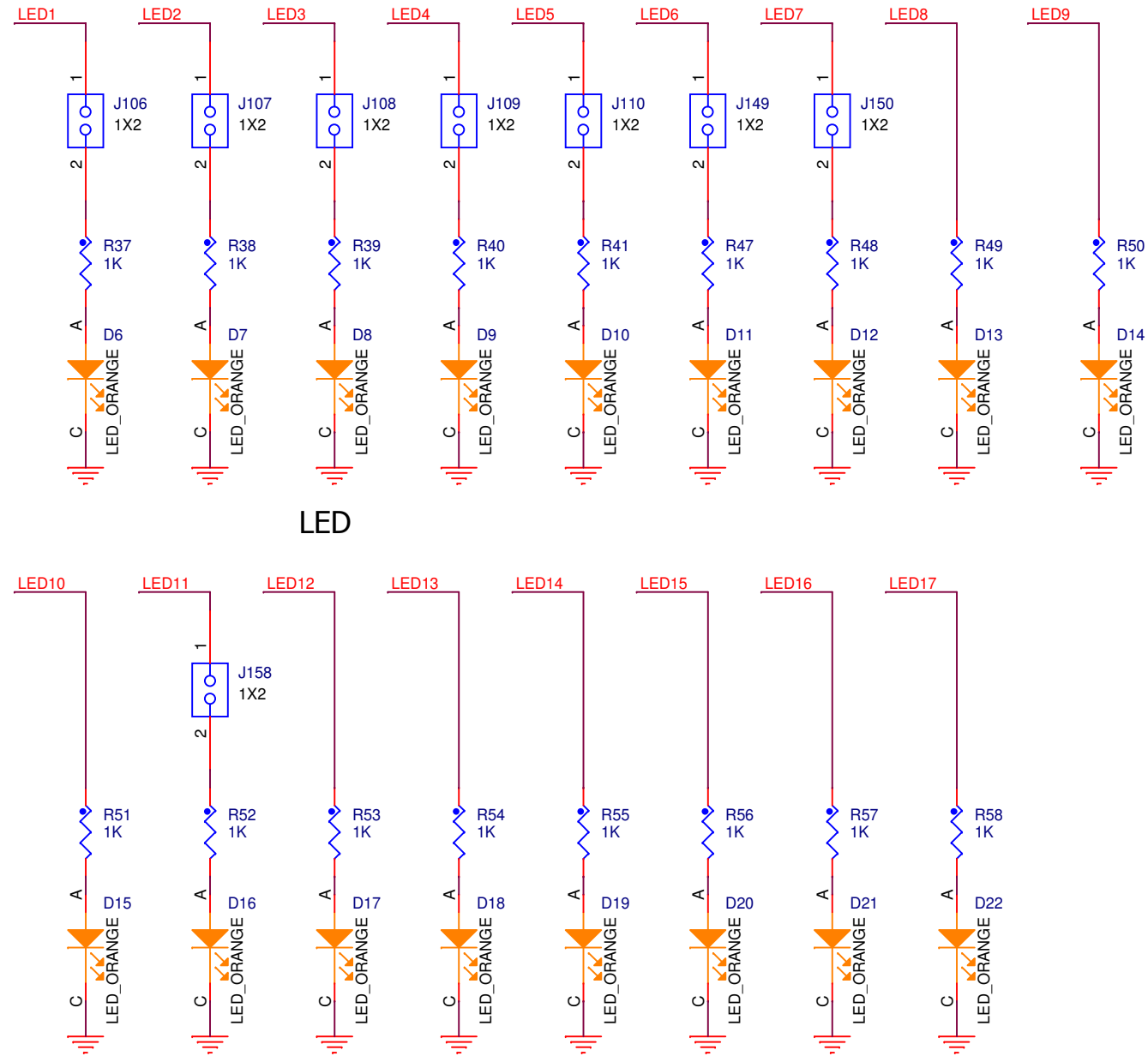
Date: Monday, March 14, 2016

Sheet 6 of 10





SW



LED



SW1 << SW1
SW2 << SW2
SW3 << SW3

LED1 >> LED1
LED2 >> LED2
LED3 >> LED3
LED4 >> LED4
LED5 >> LED5
LED6 >> LED6
LED7 >> LED7
LED8 >> LED8
LED9 >> LED9

LED10 >> LED10
LED11 >> LED11
LED12 >> LED12
LED13 >> LED13
LED14 >> LED14
LED15 >> LED15
LED16 >> LED16
LED17 >> LED17



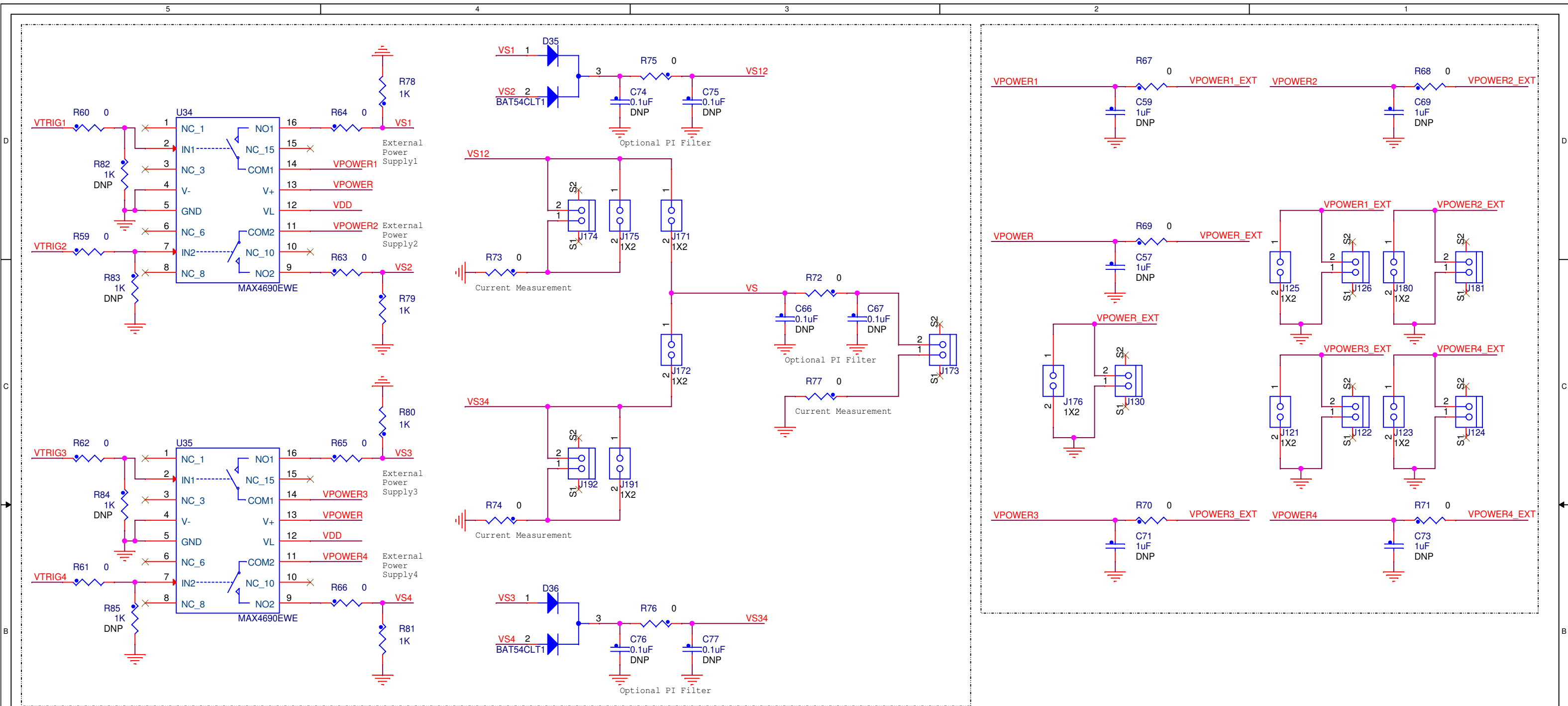
ICAP Classification: CP: IVO: X PUBI:


Drawing Title: **FRDM-SENSORS-LF**

Page Title: **SW & LED**

Size B Document Number SCH-29153 PDF: SPF-29153 Rev B

Date: Monday, March 14, 2016 Sheet 10 of 10



		
ICAP Classification: CP: IVO: X PUBI:		
Drawing Title: FRDM-SENSORS-LF		
Page Title: POWER		
Size B	Document Number SCH-29153 PDF: SPF-29153	Rev B
Date: Monday, March 14, 2016	Sheet 11 of 1	