


Table of Contents	
1	Revision History
2	FRDM-34933EVB

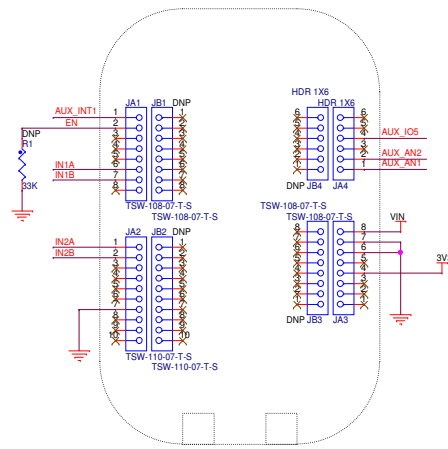
Revision History			
Rev	Description	Date	Approved
A	A085 Release	14-Jun-16	Mareike Davis

FRDM-34933EVB

		Analog Sensor Product Group 6501 William Cannon Drive West Austin, TX 78735-8598	
<small>This document contains information proprietary to NXP and shall not be used for engineering design, procurement or manufacture in whole or in part without the express written permission of NXP Semiconductors.</small>			
ICAP Classification: CP: IUD: X PUB:			
Designer: Bruce Bohn		Drawing Title: FRDM-34933EVB	
Drawn by: Mareike Davis		Page Title: Title Page	
Approved: Bruce Bohn		Size C	Document Number SCH-29076 PDF: SPF-29076
		Date: Tuesday, June 14, 2016	Rev A
		Sheet 1 of 2	

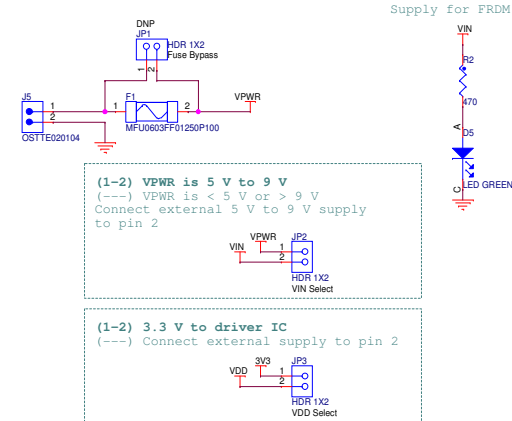
FRDM INTERFACE

This board attaches to the TOP of the FRDM MCU board; refer to the user guide for a list of compatible FRDM boards



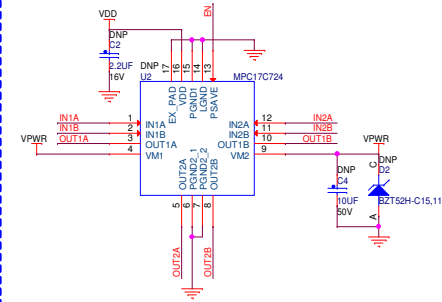
POWER SUPPLY

Circuit for supplying power to the driver IC and the FRDM board



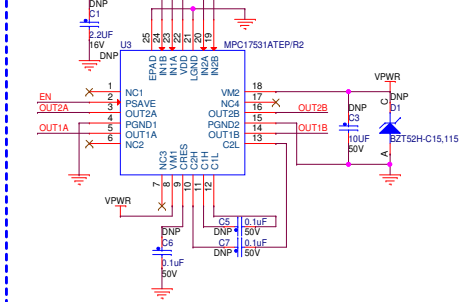
MPC17C724 (DNP)

Stepper motor driver IC



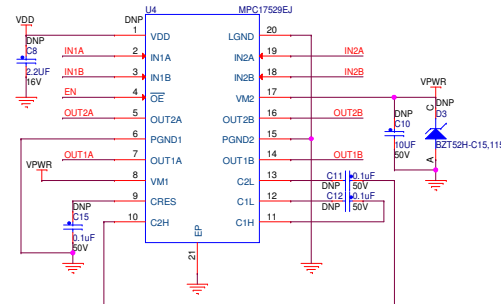
MPC17531ATEP (DNP)

Stepper motor driver IC



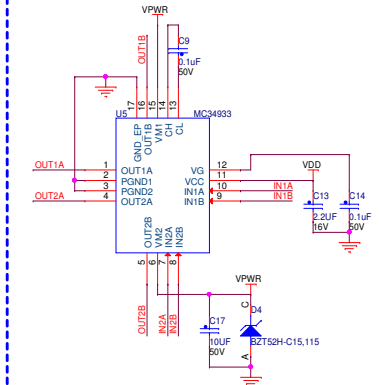
MPC17529EJ / MPC17531ATEJ (DNP)

Stepper motor driver IC



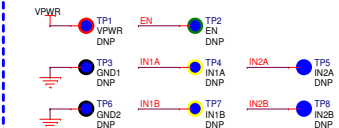
MC34933

Stepper motor driver IC



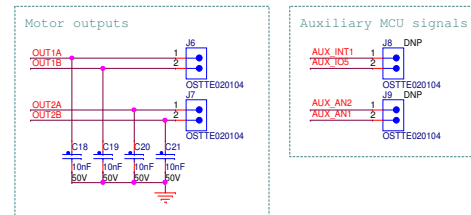
TEST POINTS

Test points for various digital, analog, and power signals



EXTERNAL CONNECTORS

Input and output connectors



NXP

ICAP Classification:		GP:	IUC: X	PUB:
Drawing Title:		FRDM-34933EVB		
Page Title:		Driver IC Schematic		
Size C	Document Number	SCH-29076 PDF: SPF-29076		Rev A
Date:	Wednesday, June 15, 2016	Sheet	2	of 2