



- Unless Otherwise Specified:  
All resistors are in ohms, 5%, 1/8 Watt  
All capacitors are in uF, 20%, 50V  
All voltages are DC  
All polarized capacitors are aluminum electrolytic

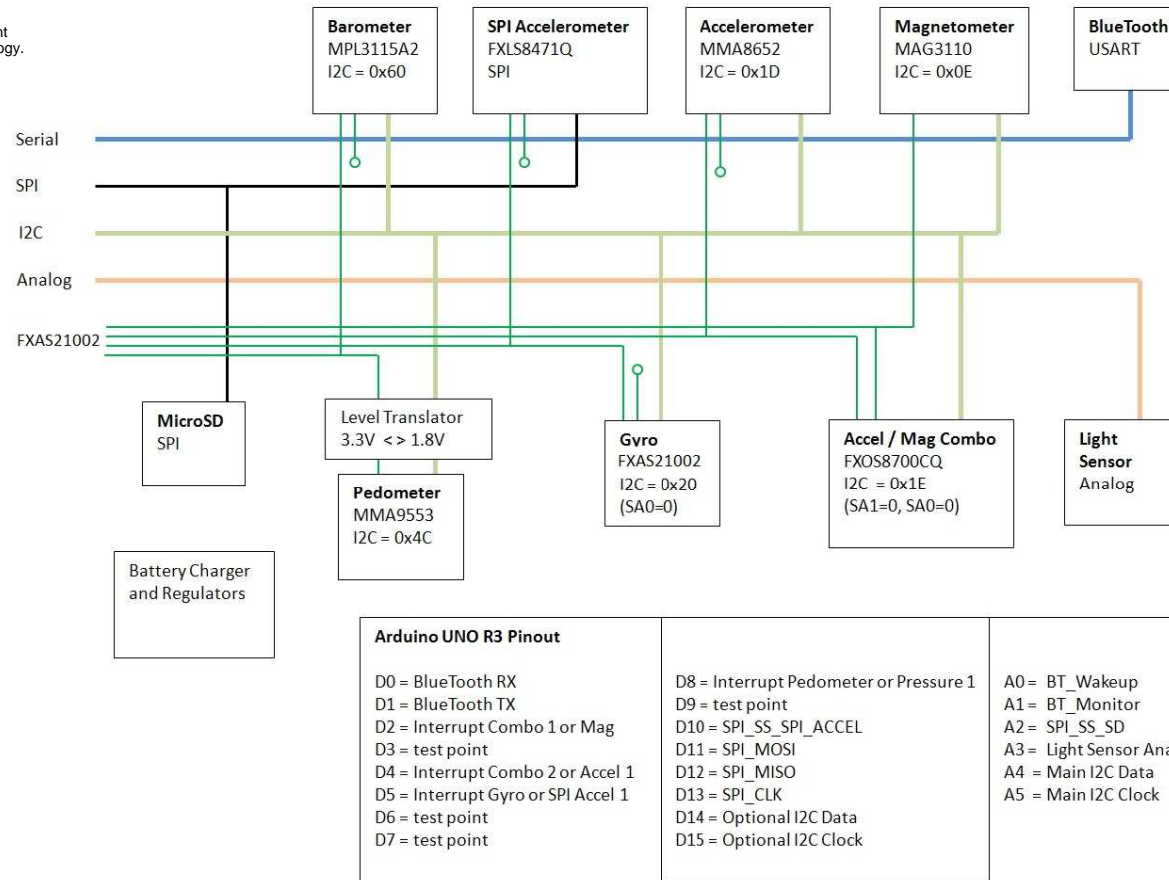
- Interrupted lines coded with the same letter or letter combinations are electrically connected.

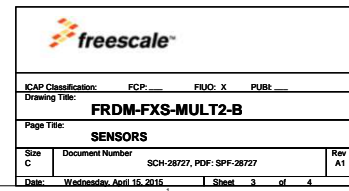
- Device type number is for reference only. The number varies with the manufacturer.

- Special signal usage:  
\_B Denotes - Active-Low Signal  
<> or [] Denotes - Vectored Signals

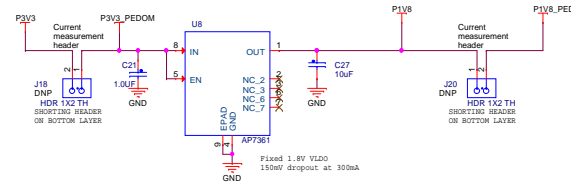
- Interpret diagram in accordance with American National Standards Institute specifications, current revision, with the exception of logic block symbology.

## FRDM-FXS-MULT2-B BLOCK DIAGRAM





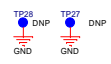
## VOLTAGE REGULATION



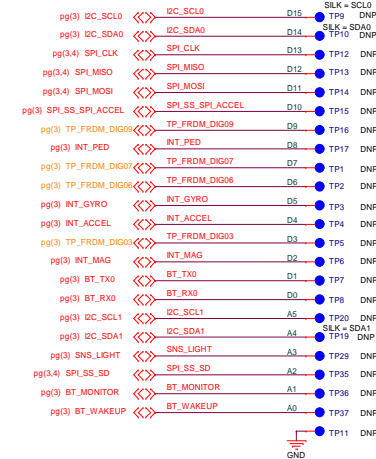
IN CIRCUIT  
TEST GND  
PROBING



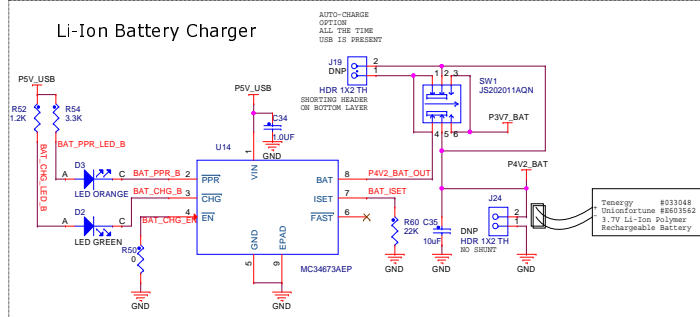
DEBUG  
GROUND HOOK



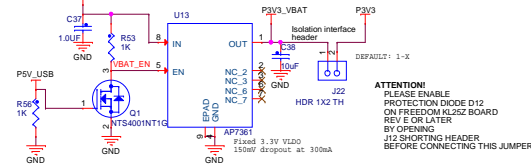
## Prototyping Area Heading Signals



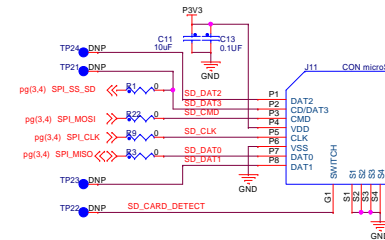
## Li-Ion Battery Charger



## Battery Regulation



## microSD Card Connector, SPI Mode



ICAP Classification: FCP: _____ FIG: X PURL: _____		
Drawing Title: <b>FRDM-FXS-MULT2-B</b>		
Page Title: <b>POWER SUPPLY</b>		
Size C	Document Number SCH-28727, PDF: SPF-28727	Rev A1
Date: Wednesday, April 16, 2015	Sheet 4 of 4	