

1. THIS DRAWING SPECIFIES THE REQUIREMENTS FOR A PRINTED WIRING BOARD IN ACCORDANCE WITH SPECIFICATION IPC-A-600 CLASS 2 (LATEST REVISION).
2. THE PWB MUST BE LEAD FREE ASSEMBLY PROCESS COMPATIBLE AND MUST BE ABLE TO HANDLE A MINIMUM OF 5 CYCLES AT 260 DEGREES CELSIUS FOR 10 SECONDS.
3. BASE MATERIAL - LAMINATE AND PREPREG SHALL MEET IPC-4101B-26, 83 or 98
 - T_g - MUST BE GREATER THAN OR EQUAL TO 150 DEGREES CELSIUS.
 - T_d - MUST BE GREATER THAN OR EQUAL TO 330 DEGREES CELSIUS.
4. COPPER FOIL WEIGHT - SEE STACKUP TABLE "A".
5. CHARACTERISTIC IMPEDANCE - NONE
6. MINIMUM CONDUCTIVE WIDTH/SPACING TO BE .010"/.005"
7. PLATING FINISH - BOTH SIDES ENIT (ELECTROLESS NICKEL IMMERSION GOLD):
 - 0.0500-.132 MICRON (2-4 MICRON MINIMUM OF GOLD OVER
 - 2,540-.6 MICRON (100-250 MICROMINIMUM OF NICKEL).

9. SOLDERMASK - BLACK COLOR (TAIYO OR EQUIVALENT), BOTH SIDES.
MODIFICATION OF SOLDERMASK IS NOT ALLOWED WITHOUT WRITTEN PERMISSION FROM FREESCALE.

10. SILKSCREEN - WHITE EPOXY INK, BOTH SIDES. NO SILK ON PADS.

11. ELECTRICAL TEST - 100% IPCD356.

12. PRINTED WIRING BOARD IS TO BE INDIVIDUALLY BAGGED.

13. DRC'S MUST BE RUN ON THE GERBER BEFORE BUILDING BOARDS. UNLESS PRIOR APPROVAL IS GIVEN IN WRITING BY FREESCALE.

14. TEARDROPS MAYBE ADDED AT THE FAB HOUSE TO ALL SIGNAL LAYERS.

15. TWO SOLDER SAMPLES TO BE PROVIDED.

16. BASIC GRID INCREMENT AT 1:1 IS .0001.

17. SUPPLIER MARKINGS - ON SOLDER SIDE ONLY, WHERE SHOWN.
- MUST BE UL RECOGNIZED AND MUST HAVE AN ID THAT CONFORMS TO UL94V-0

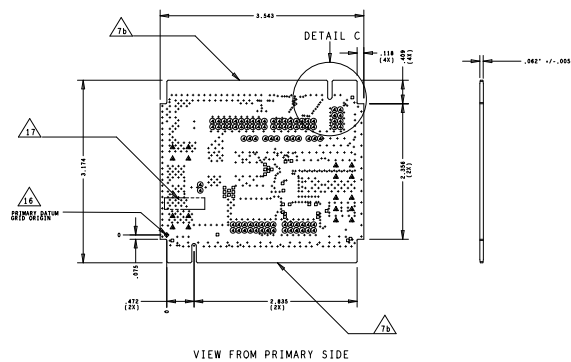
18. THE PWB WILL BE MARKED AS LEAD FREE BY USE OF AN INK STAMP (95)

19. THE PWB WILL BE MARKED AS LEAD FREE PROCESS COMPATIBLE BY USE OF AN INK STAMP (260°C)

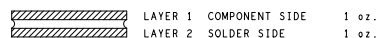
20. ALL PLATED AND NON-PLATED THROUGH HOLES ARE TO BE DRILLED AT PRIMARY DRILL STEP.
ALL HOLE LOCATION TOLERANCES ARE TO BE $\pm .002$ IN REFERENCE TO THE PRIMARY DATUM.

21. FINISHED PCB MUST BE PANELIZED FOR ASSEMBLY ACCORDING TO CONTRACT MANUFACTURERS REQUIREMENTS. THE ADDITION OF RAILS AND .125"NON-PLATED TOOLING HOLES ARE AT THE DISCRETION OF CONTRACT MANUFACTURER. PANELIZATION MUST BE APPROVED BY CONTRACT MANUFACTURER.

22. THE MANUFACTURE HAS THE OPTION TO ADD COPPER THIEVING ON OUTER AND INNER LAYERS. KEEP A MINIMUM DISTANCE OF .100" FROM ANY BOARD FEATURES.



FINISHED Cu WEIGHT



DETAIL A
LAYER STACKUP
SCALE: NONE

REVISIONS				
ZONE	REV	DESCRIPTION	DATE	APPROVED
	A	ORIGINAL RELEASE	09-03-14	R. D. R
	B	RE-SPIN PER ECO55741	01-15-15	C.N.
	C	RE-SPIN PER ECO58596	07-01-15	C.N.

DRILL CHART: TOP to BOTTOM				
ALL UNITS ARE IN MILS				
FIGURE	SIZE	TOLERANCE	PLATED	QTY
•	8.0	+0.0/-8.0	PLATED	660
◦	14.0	+0.0/-14.0	PLATED	33
⊗	40.0	+3.0/-3.0	PLATED	86
▲	43.0	+3.0/-3.0	PLATED	18
◆	25.0	+2.0/-2.0	NON-PLATED	1

_____ PUBL (PUBLIC INFORMATION) <input checked="" type="checkbox"/> FWD (FREESCALE INTERNAL USE ONLY) _____ FCP (FREESCALE CONFIDENTIAL, PROPRIETARY)		PART NO. 170-28488 THIS DOCUMENT CONTAINS INFORMATION RELATIVE TO FREESCALE AND SHALL NOT BE USED FOR FREESCALE DESIGN OR FOR FREESCALE PROMOTION IN WHOLE OR IN PART WITHOUT THE CONSENT OF FREESCALE.		FREESCALE 6501 WILLIAM CANNON DRIVE WEST AUSTIN, TEXAS 78735 USA	
UNLESS OTHERWISE SPECIFIED, DIMENSIONS ARE IN INCHES (MM) TOLERANCES ARE DECIMALS .X .XX .30"		APPROVALS DATE DRAWN M. PRAVEENA [Lnt] 07-01-15 CHECKED S. Y. RUAN 07-01-15 DESIGN ENGINEER SENTHIL [Lnt] 07-01-15		PRINTED WIRING BOARD X-TWR-17510EVB	
<input checked="" type="checkbox"/> HAS ALL WORKED PARTS BEEN ALL SHIP SIZES AND CORRESPONDING BOM, REPAIR BOM, UNDERLINE AND NOT TO SCALE, THEN ANGLE ORTHOGRAPHIC DRAWING IS USED.		SIZE D LAY-28488	DATE FILEd FAW-28488	ENG. NAME C	REV C
		SCALE 1" = 1"	DO NOT SCALE DRAWING	SHEET 1 OF 1	