

8

7

6

5

4

3

2

1

NOTES (UNLESS OTHERWISE SPECIFIED):

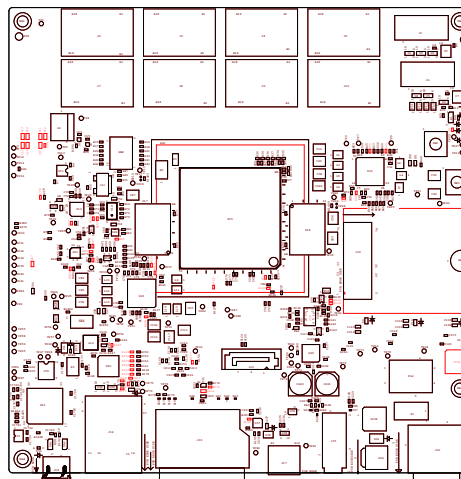
ASY_501-1-00572_C1.ZIP CONSISTS OF FOLLOWING ASSEMBLY DATA

- PMT_501-1-00572_C1.ART - TOP PASTE
- PMB_501-1-00572_C1.ART - BOTTOM PASTE
- PNP_501-1-00572_C1.XLS - PICK AND PLACE DATA

REVISIONS				
ZONE	REV	DESCRIPTION	DATE	APPROVED
	A1	ORIGINAL RELEASE	24-06-17	X.X.
	B1	SCHEMATIC CHANGES UPDATED	04-12-17	X.X.
	B2	SCHEMATIC CHANGES UPDATED	27-12-17	X.X.
	B3	NO ASSEMBLY CHANGES	02-01-18	X.X.
	B4	SCHEMATIC CHANGES UPDATED	13-07-18	X.X.
	C1	SCHEMATIC CHANGES UPDATED	21-08-18	X.X.
	C5	ASSEMBLY CHANGES UPDATED	15-06-20	X.X.

NOTES: UNLESS OTHERWISE SPECIFIED.
 CAUTION : COMPONENTS ARE SUBJECT TO DAMAGE BY STATIC ELECTRICITY.

- 1) SOLDER AND ASSEMBLE AS PER INDUSTRY WORKMANSHIP STANDARDS.
- 2) LABELS SHALL NOT TO BE PLACED OVER EXPOSED COPPER AND METAL.
- 3) SOLDER PASTE TOOLING SHOULD BE MADE USING PMT_501-1-00572_C1.ART FOR PRIMARY SIDE.
- 4) SOLDER PASTE TOOLING SHOULD BE MADE USING PMB_501-1-00572_C1.ART FOR SECONDARY SIDE.
- 5) APERTURES MAY BE MODIFIED TO BEST FIT VVDN REQUIREMENT.
- 6) ASSEMBLY SHALL BE ELCECTRICALLY TESTED.
- 7) STICK TO THE BACKING REQUIREMENT AS PER CLASS RECOMMENEDATION.
- 8) "FIDUCIAL'S WILL NOT BE THRU OPEN, IT SHOULD BE HALFETCH".
- 9) RED COLOR HIGHLIGHTED COMPONENTS ARE NO MOUNT.



ASSEMBLY TOP

PCB PRIMARY SIDE
MAXIMUM WEIGHT 21.8400g

PCB Thickness 1.6 mm

PCB SECONDARY SIDE
MAXIMUM WEIGHT 10.24 96g

<input type="checkbox"/> COMPANY PUBLIC <input checked="" type="checkbox"/> COMPANY INTERNAL <input type="checkbox"/> COMPANY CONFIDENTIAL		PART NO. 170-29420	NXP SEMICONDUCTORS 6501 WILLIAM CANNON DRIVE WEST AUSTIN, TEXAS 78735 USA	
UNLESS OTHERWISE SPECIFIED DIMENSIONS ARE IN INCHES TOLERANCES ARE: DECIMALS .01 ANGLES .0-30° .XXX .005 <input checked="" type="checkbox"/> RNS ALL MACHINED SURFACES BREAK ALL SHARP EDGES AND CORNERS. REMOVE BURRS. UNDERLINED DIM. NOT TO SCALE. THIRD ANGLE ORTHOGRAPHIC PROJECTION IS USED.		APPROVALS DRAWN VVDN 15-06-20 CHECKED VVDN 15-06-20 DESIGN ENGINEER VVDN 15-06-20	DATE 15-06-20 15-06-20 15-06-20	TITLE: PRINTED WIRING BOARD MCIMX8QM-CPU
SIZE D LAY-29420	CAD FILE NAME LAY-29420	DWG. NO. ASY-29420	REV C5	SCALE 1/1 DO NOT SCALE DRAWING SHEET 1 OF 2

8

7

6

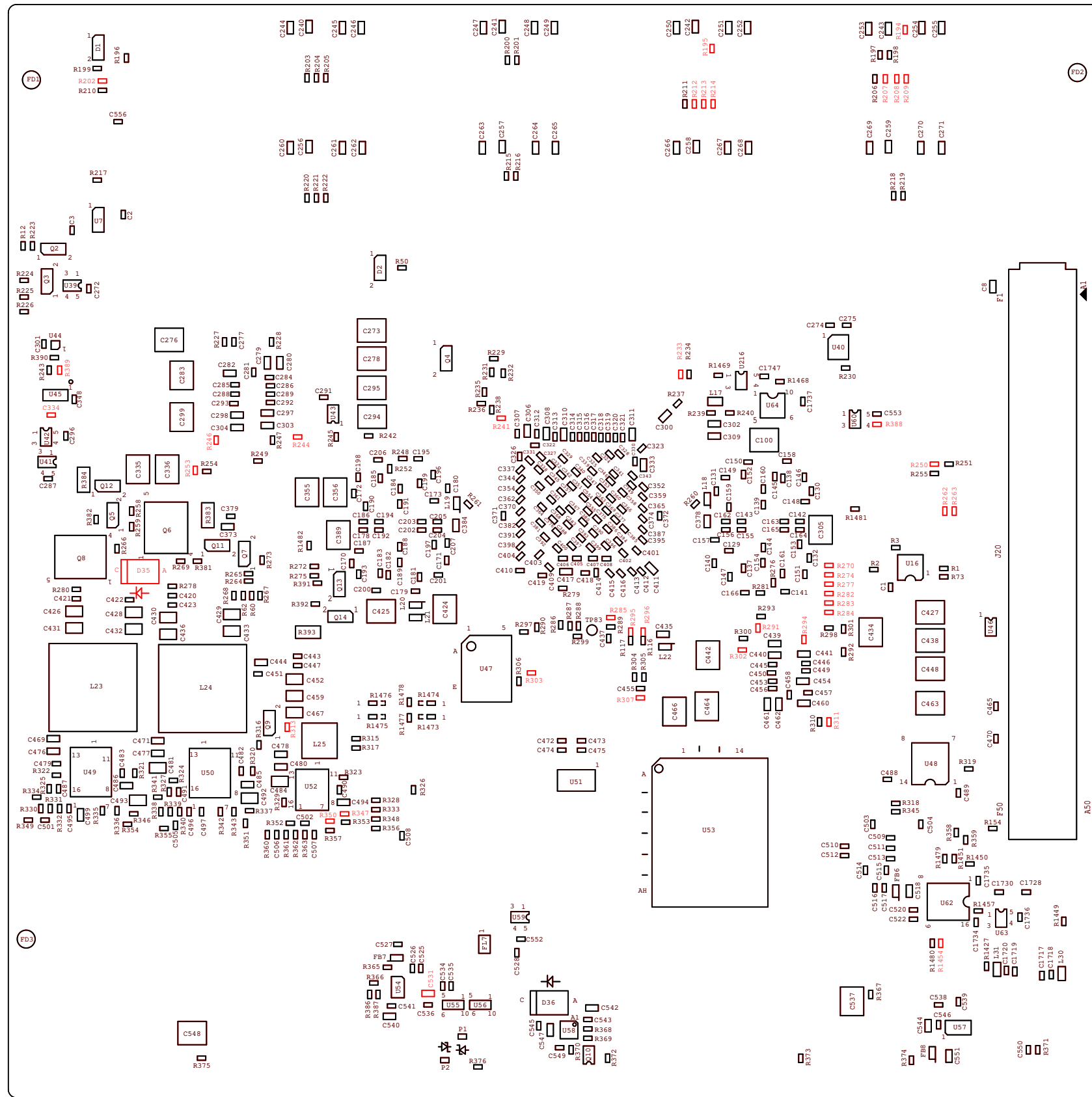
5

4

3

2

1



ASSEMBLY BOTTOM