



<b>Contents</b>
Diagram

Revisions			
Rev	Description	Date	Approved
X1	Initial Design Release	22-Jul-14	Antonio Quiroz
X2	Level Translators, Arduino or FRDM support	28-Jul-14	Antonio Quiroz
X3	U1 Pin name update BOM Optimization U2	4-Aug-14	Antonio Quiroz
A	Production Release	1-Sep-14	Antonio Quiroz
B	External MCU control RGB	18-Nov-14	Antonio Quiroz

# FRDM-MCR20A

		<b>Microcontroller Product Group</b> 6501 William Cannon Drive West Austin, TX 78735-8598	
<small>This document contains information proprietary to Freescale and shall not be used for engineering design, procurement or manufacture in whole or in part without the express written permission of Freescale.</small>			
ICAP Classification: FCP:      FLUQ: X      PUBI:			
Designer: Antonio Quiroz	Drawing Title: <b>FRDM-MCR20A</b>		
Drawn by: Antonio Quiroz	Page Title: <b>TITLE PAGE</b>		
Approved: Frank Latona	Size C	Document Number SCH-28535 PDF: SPF28535	Rev B
Date: Tuesday, November 18, 2014		Sheet 1 of 3	

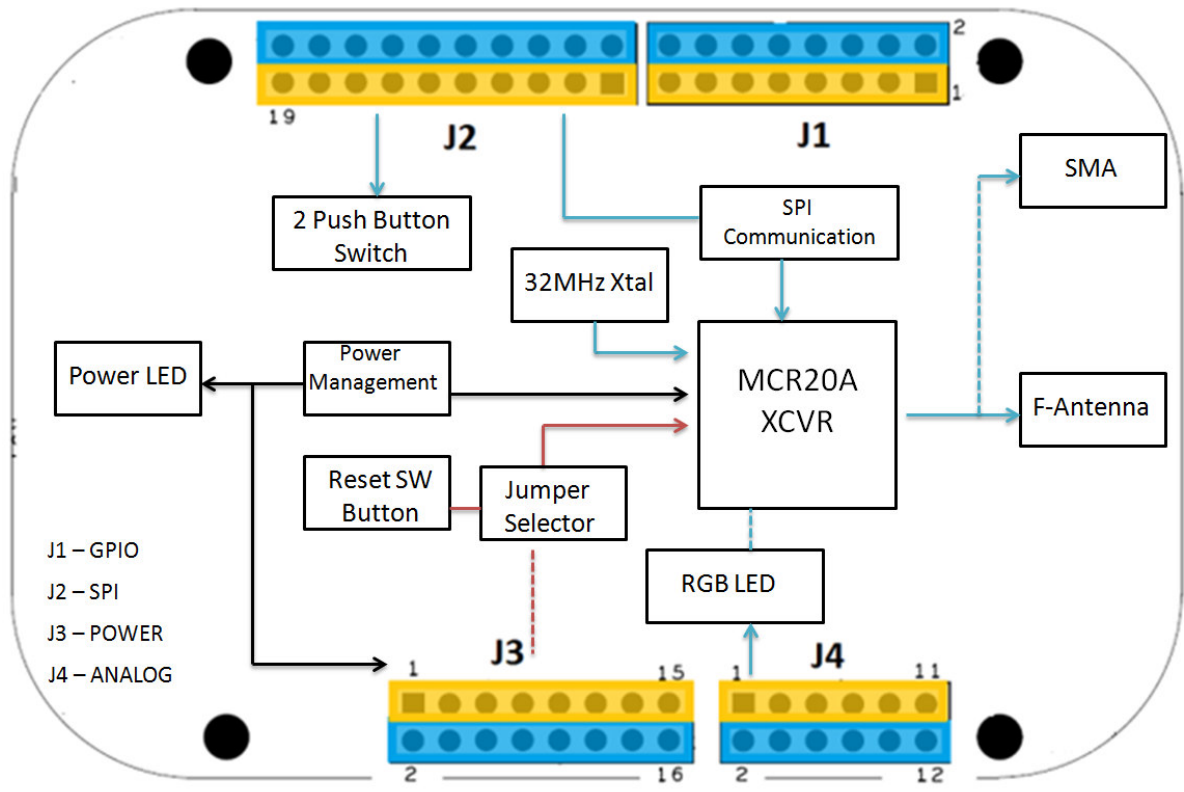


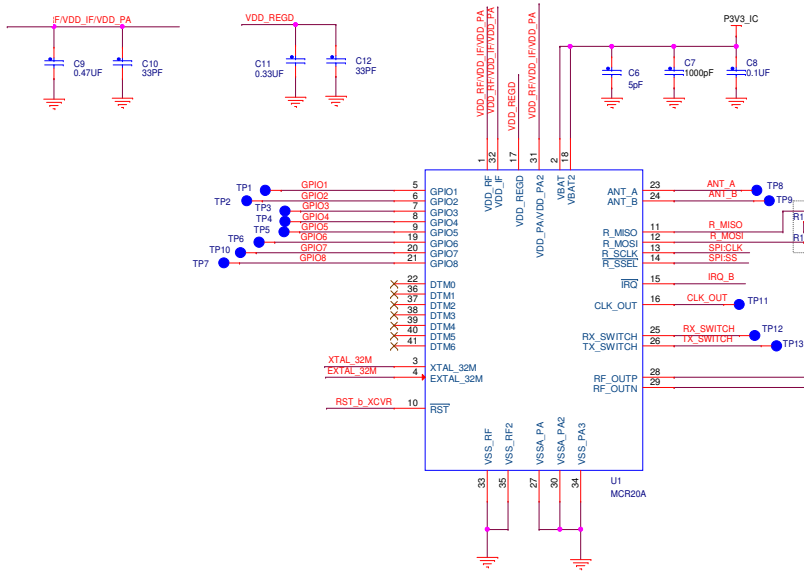
id with the same letter or letter  
ctrically connected.

2. Special signal usage:

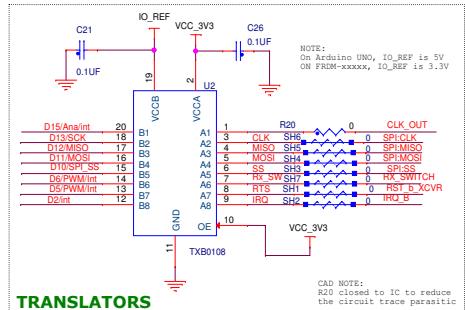
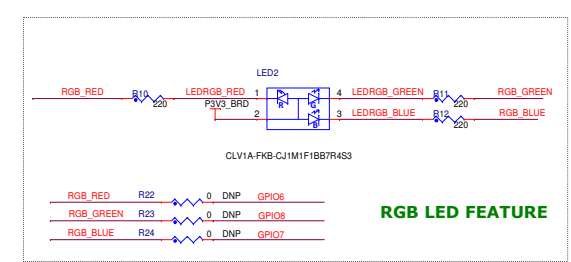
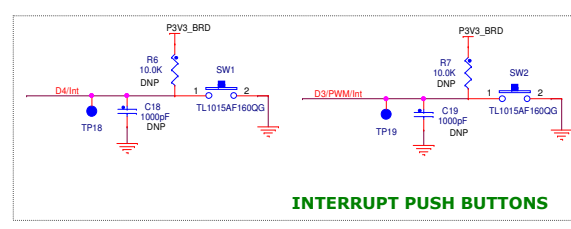
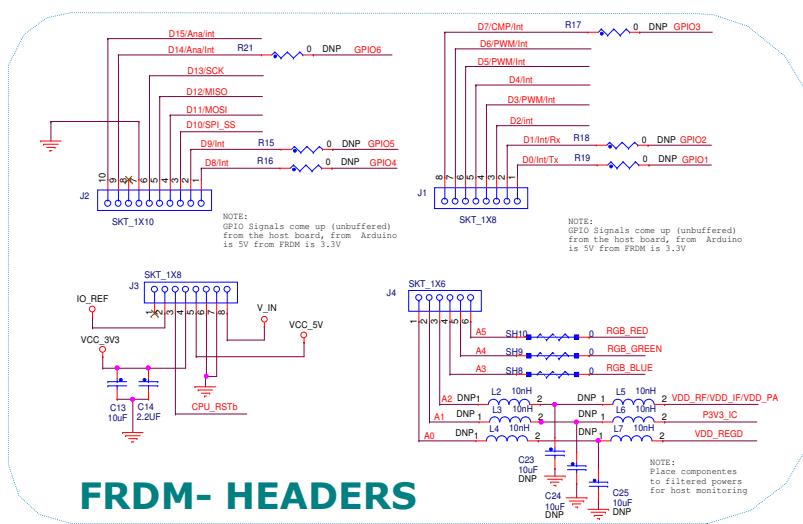
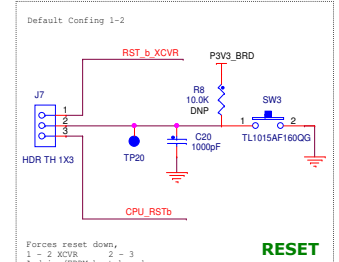
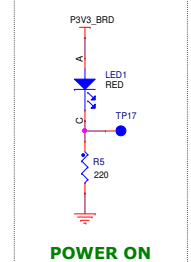
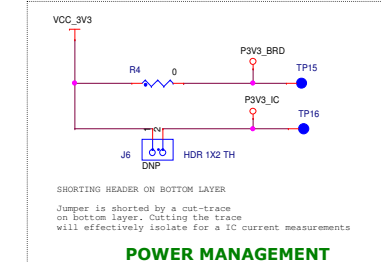
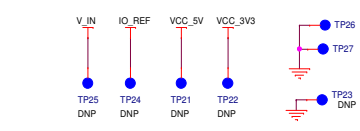
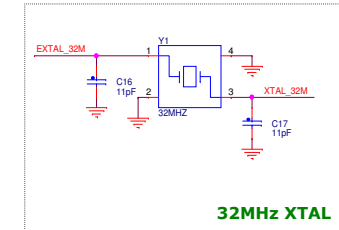
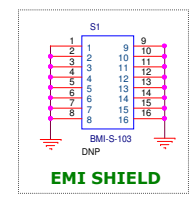
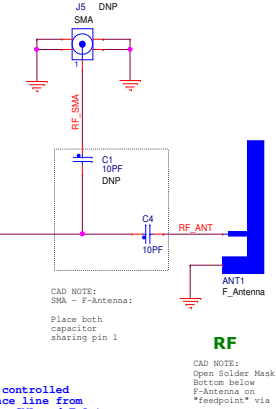
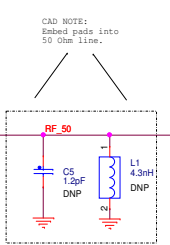
- \_B Denotes - Active-Low Signal
- <> or [] Denotes - Vectored Signals

3. Interpret diagram in accordance with American  
National Standards Institute specifications, current  
revision, with the exception of logic block symbology.





CAD NOTE:  
MISO/MOSI POKA-YOKE:  
Place both resistors with the same orientation and provide same airgap between MISO to MOSI resistors terminals in a square fashion.



**freescale**

ICAP Classification: FCP: FIUC: X PUB: \_\_\_\_\_  
Drawing Title: **FRDM-MCR20A**  
Page Title: **FRDM-MCR20A Shield**  
Size C Document Number SCH-28535 PDF: SPF28535 Rev B  
Date: Wednesday, November 19, 2014 Sheet 3 of 3