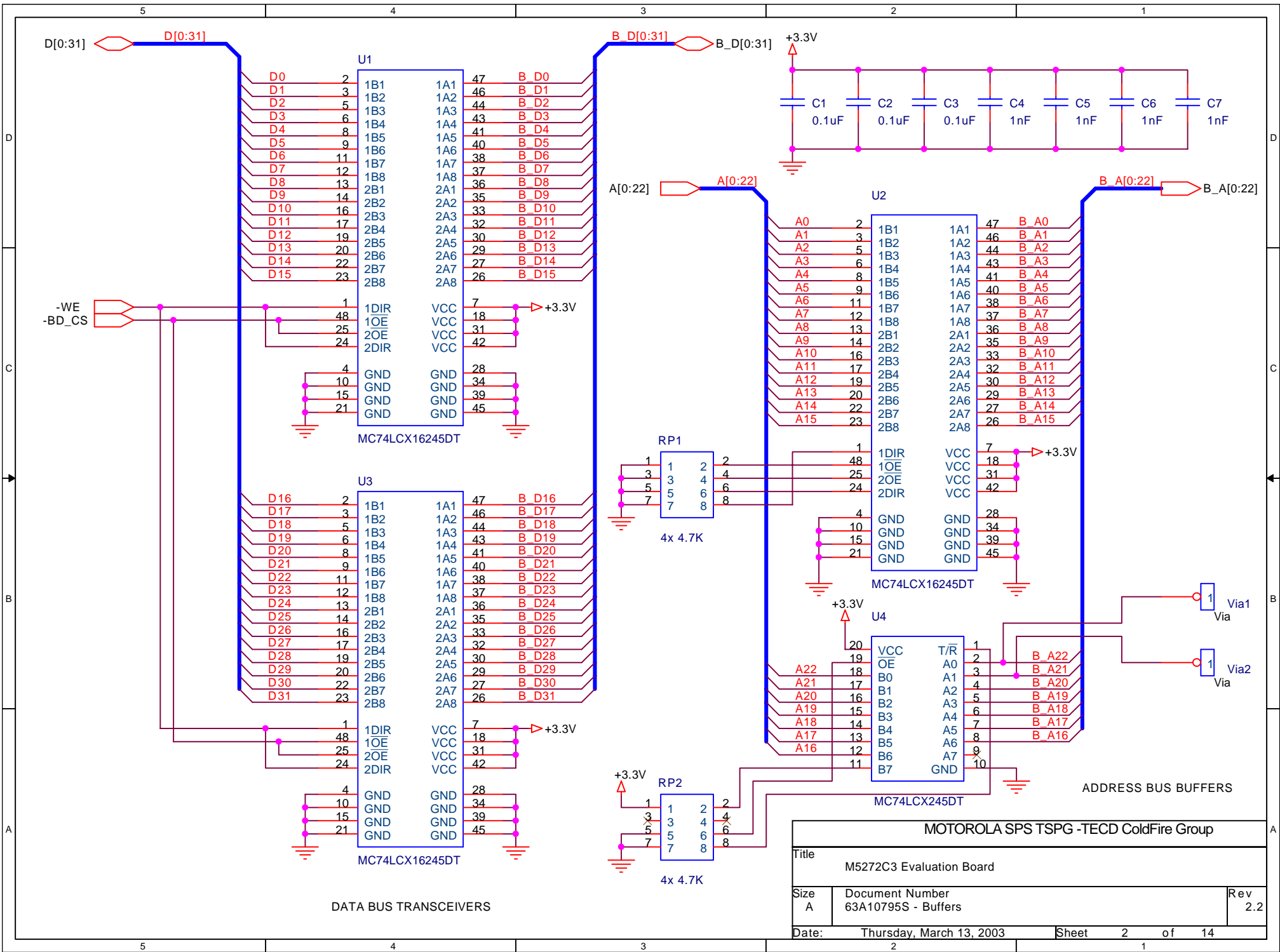
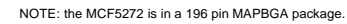


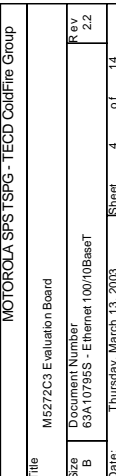
Cold Fire® MCF5272  
Evaluation Board

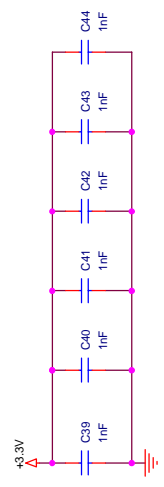
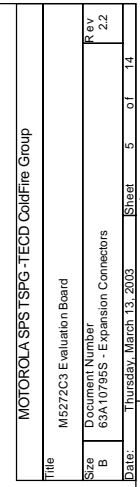
Motorola SPS TSPG-TECO ColdFire Group			
File	M5272C3 Evaluation Board		
Size	Document Number	Rev	
C	63A10795S - Hierarchical Overview	2.2	
Date	Thursday, March 13, 2003	Sheet	1 of 14

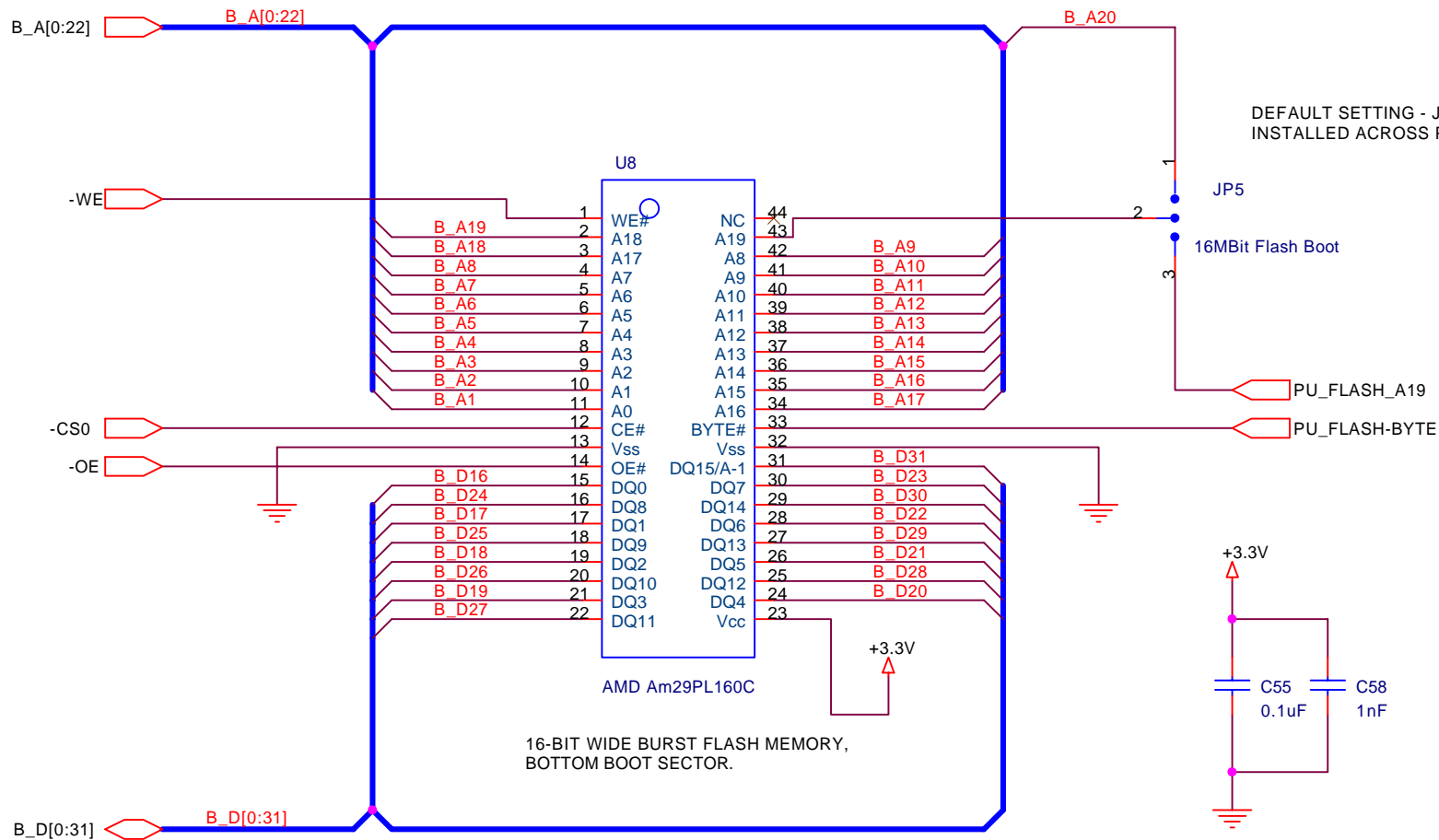




MOTOROLA SPS TSPG - TECD ColdFire Group			
Title M5272C3 Evaluation Board			
Size C	Document Number 63A10795S - CPU		Rev 2.2
Date:	Thursday, March 13, 2003	Sheet	3 of 14





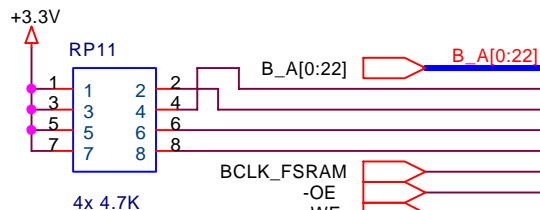
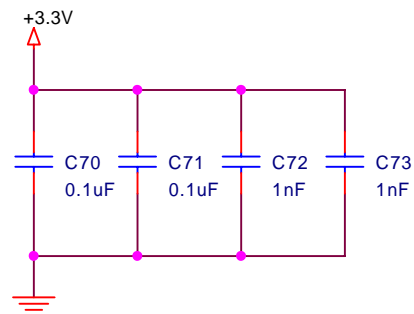


DEFAULT SETTING - JUMPER 5 SHOULD BE  
INSTALLED ACROSS PINS 1 & 2.

MOTOROLA SPS TSPG - TECD ColdFire Group		
Title		
M5272C3 Evaluation Board		
Size	Document Number	Rev
A	63A10795S - Flash Memory	2.2
Date:	Thursday, March 13, 2003	Sheet 6 of 14

NOTE: Alternative FSRAM's with the same PCB footprint and functionality are :- Samsung K7B403625M, Cypress CY7C1345, IDT 71V3577 & Micron MT58L128L36F1.

NOTE: Rev. 2.0 to Rev 2.1 design modification to incorporate -OE and -WE (or R/W) correctly with the byte strobe signals -BS0 to -BS3.



BCLK\_FSRAM

-OE

-WE

-BS0

-BS1

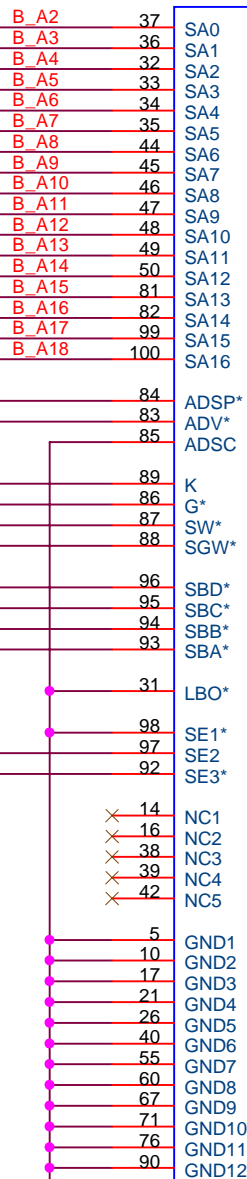
-BS2

-BS3

-CS2

B\_A[0:22]

B\_A[0:22]



Motorola MCM69F737TQ11 not populated at assembly

B\_D[0:31]

B\_D[0:31]

MOTOROLA SPS TSPG - TECD ColdFire Group

Title

M5272C3 Evaluation Board

Size

Document Number  
63A10795S - FSRAM

Rev

2.2

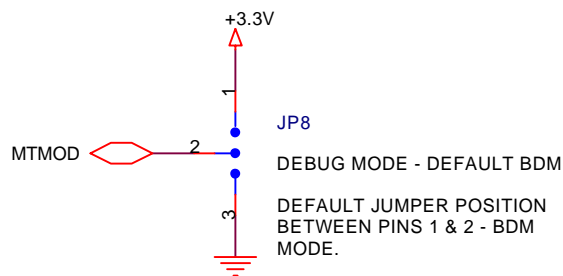
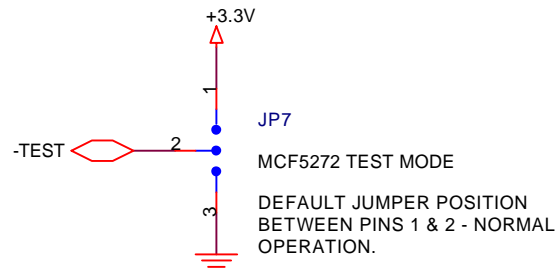
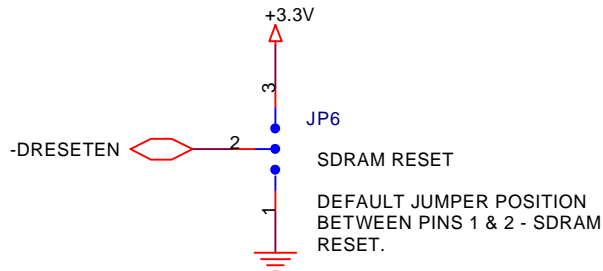
Date:

Thursday, March 13, 2003

Sheet

7

of 14



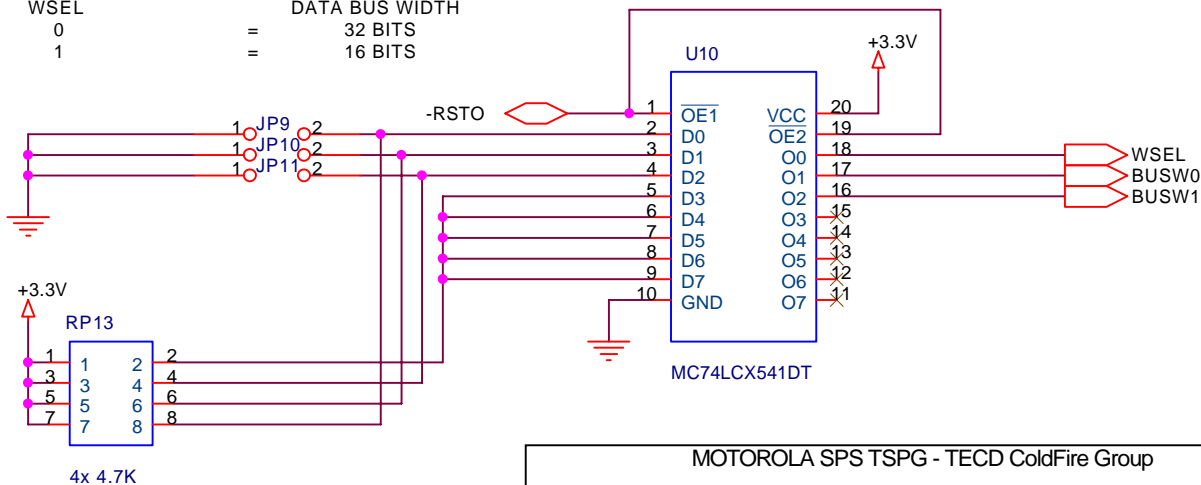
**IMPORTANT NOTE: ONLY a 3.3V BDM debugging cable can be used with the MCF5272 processor.**

DEFAULT FOR JP9 /WSEL IS FITTED (0).  
 DEFAULT FOR JP10 /BUSW0 IS FITTED (0).  
 DEFAULT FOR JP11 /BUSW1 IS NOT FITTED (1).

BUSW1	BUSW0	-CS0 BUS WIDTH
0	0	= 32 BITS
0	1	= 8 BITS
1	0	= 16 BITS
1	1	= RESERVED - DO NOT USE

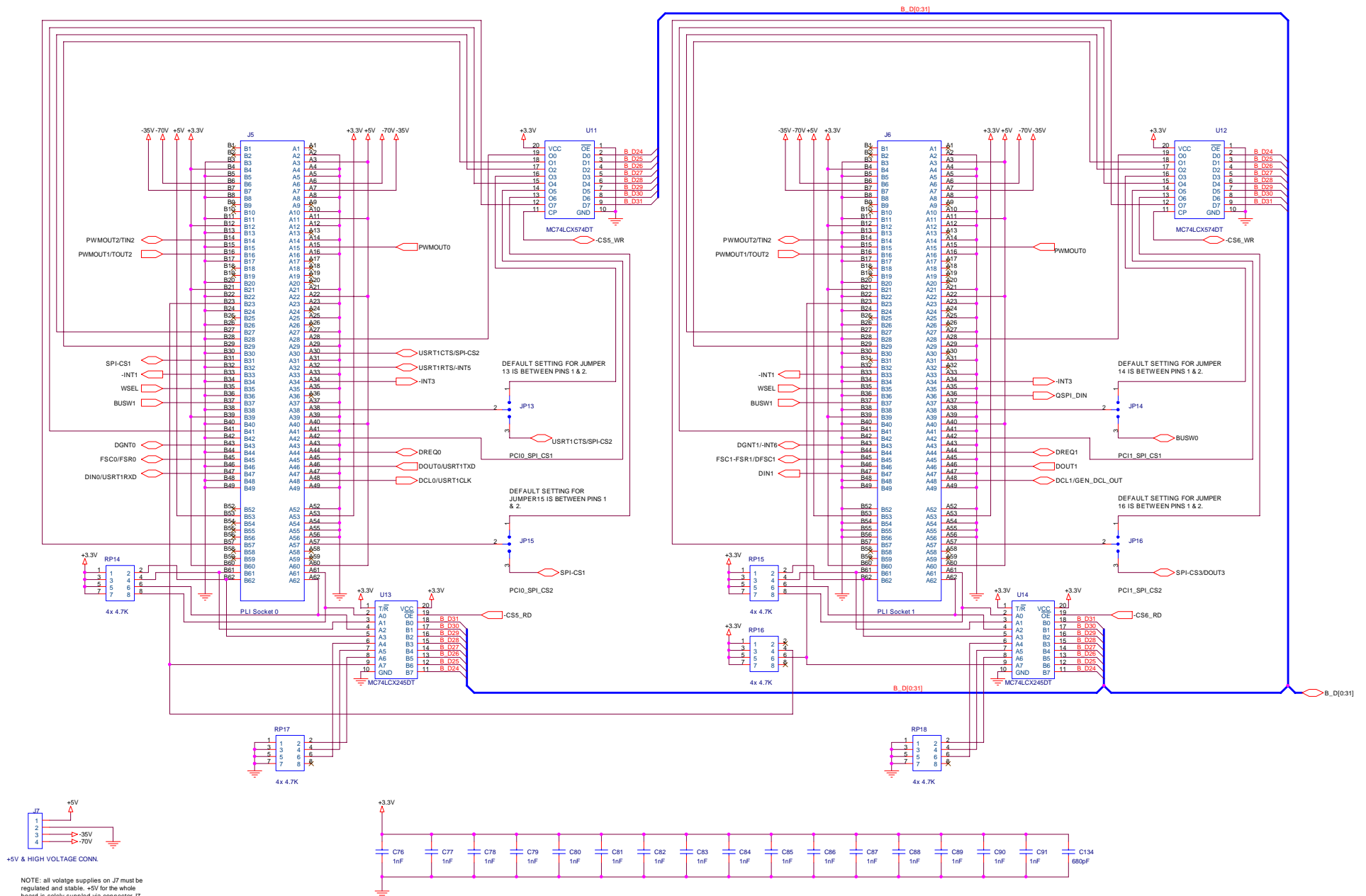
WSEL	DATA BUS WIDTH
0	= 32 BITS
1	= 16 BITS



MOTOROLA SPS TSPG - TECD ColdFire Group		
Title		
M5272C3 Evaluation Board		
Size	Document Number	Rev
A	63A10795S - Background Debug Mode (BDM) Port & Reset Config.	2.2
Date:	Thursday, March 13, 2003	Sheet 8 of 14

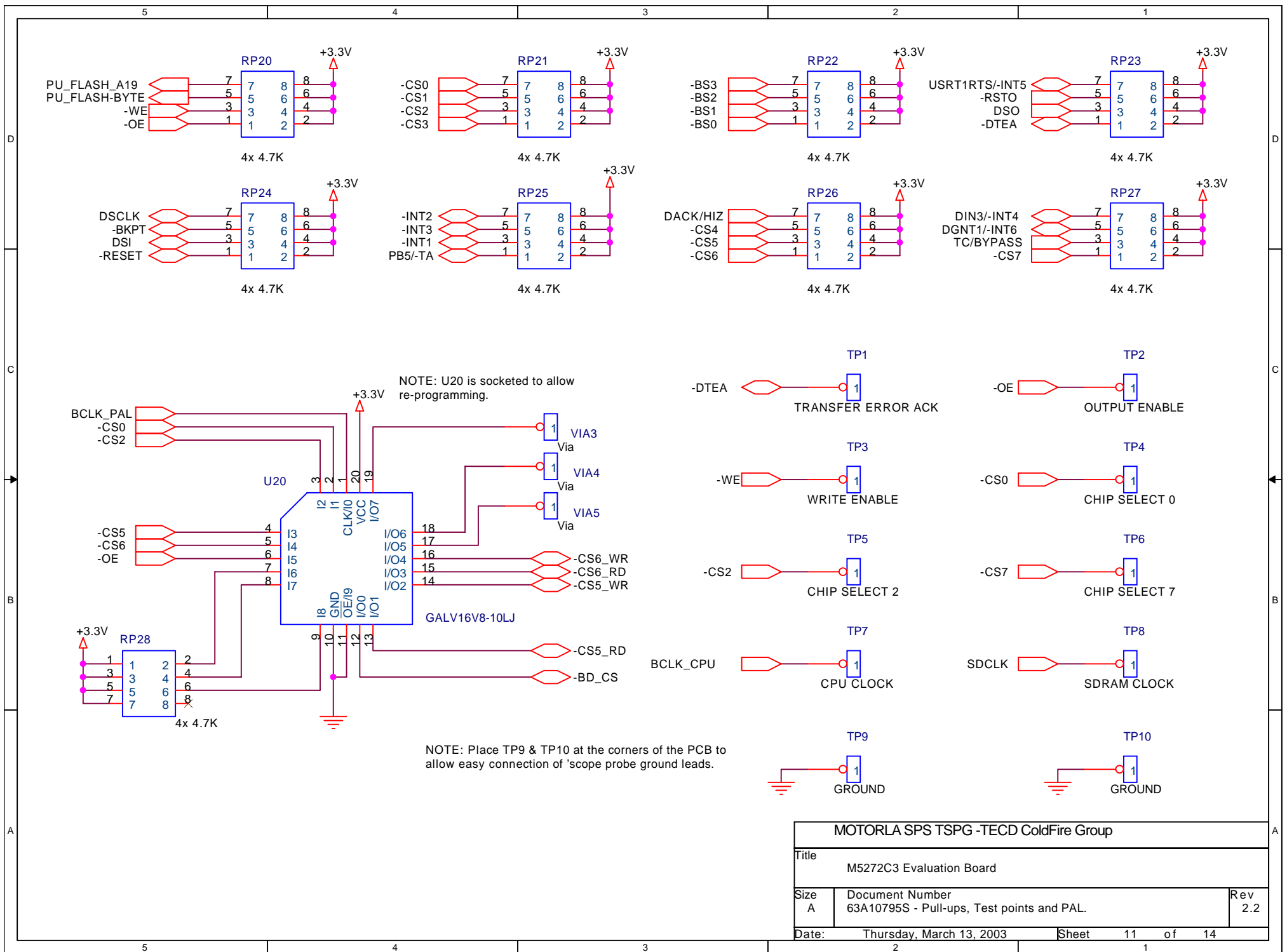


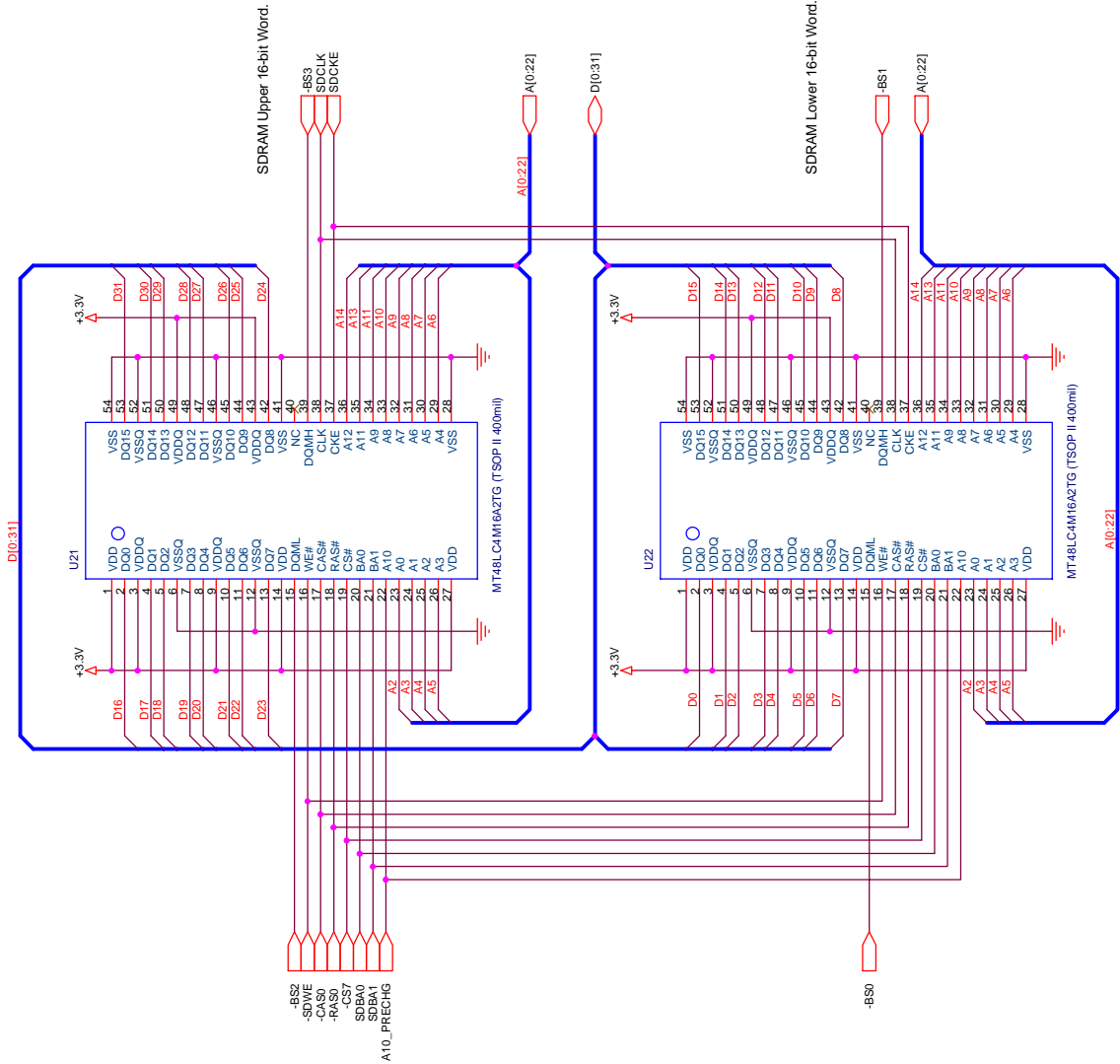
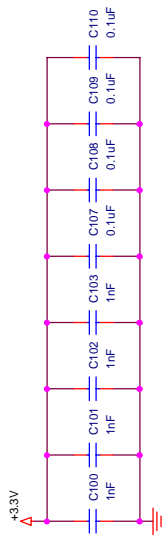
NOTE: PLI Sockets J5 & J6 are not populated during assembly.



MOTOROLA SPS TSPG - TECO ColdFire Group			
File	M5272C3 Evaluation Board		
Size	Document Number	Rev	
C	63A10795S - PLI Connectors	2.2	
Date:	Thursday, March 13, 2003	Sheet	9 of 14







MOTOROLA SPS TSPG - TECD ColdFire Group

Title		M527C3 Evaluation Board	
Size		Document Number	
B		63A10795S - SDRAM	
Date		Thursday, March 13, 2003	
		Sheet	12 of 14



