

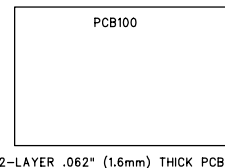
	434MHz	868MHz	916MHz
F1	RF1211B	RF1172B	
L2	68nH	56nH	
L3	22nH	18nH	
L4	22pF	8p2F	
L6	33nH	15nH	
C8	100pF	27pF	
C12	4p7F	3p9F	
C13	3p3F	1p5F	
C14	1p5F	1p0F	
C15	4p7F	1p8F	
C17	2p7F	8p2F	
X1	9.864375	13.580625	
	MHz	MHz	

TABLE B

OPT	W/SAW	W/O SAW
R7		
C14		
C27		
L5		
L6		
C8		
L2		
C13		
F1		

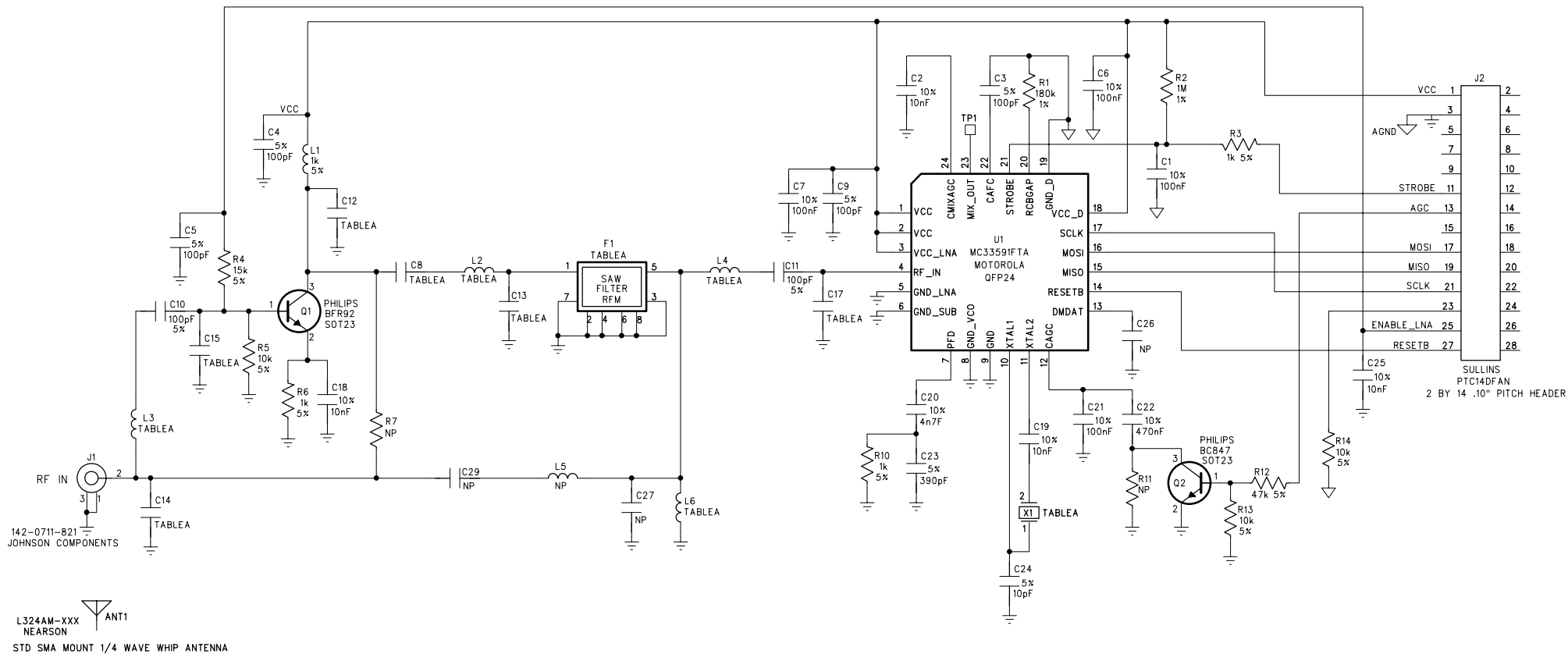
TABLE C

OPT	W/LNA	W/O LNA
R7		
C14		
L3		



REVISION RECORD

REV.	DESCRIPTION:	DATE:
A	ORIGINAL ISSUE	02-10-04
B	DEFINE BAND SPECIFIC PARTS IN POPULATION OPTION TABLE A	02-23-03
	RE-NUMBER J2, CHANGE TO SULLINS PTC14DFAN	05-14-04



NOTES
UNLESS NOTED OTHERWISE

1. ALL RESISTOR VALUES IN OHMS
2. ALL RESISTORS 0603 SIZE SURFACE MOUNT 5%
3. ALL NON-POLARIZED CAPACITORS 0603 SIZE CERAMIC SURFACE MOUNT

L.S. RESEARCH, Inc.
WIRELESS PRODUCT DEVELOPMENT
W66 N220 Commerce Court
Cedarburg, WI 53012
PH# (262) 375-4400 FAX# (262) 375-6731

DRAWN BY: MIKE HENNIG	DATE: 02-05-2004	TITLE: SCHEMATIC
CHECKED BY: MARC DENIS	DATE: 05-18-2004	PROJECT: MOTOROLA ROMEO 2 RF MODULE
APPROVED BY:	DATE:	SIZE: A
PRINT DATE:		DRAWING NO: MOT02SCH
FILENAME: MOT02_SCH	SCALE: DO NOT	REV: B
	SHEET: 1 OF 1	