

1. MINIMUM CLEARANCE ON THE BOARD SHALL BE .007 INCH.

2. INNER LAYERS SHALL HAVE A MINIMUM COPPER THICKNESS OF 1 OZ. OUTER LAYERS SHALL HAVE A MINIMUM COPPER THICKNESS OF 1.5 OZ AFTER PLATING.

3. MINIMUM THICKNESS OF COPPER ON THE WALL OF A PLATED HOLE SHALL BE .001 INCH.

4. HOLE SIZE TOLERANCES SHALL BE:

PLATED THRU HOLES =.012 SHALL BE +.005/- .012 INCH.

PLATED THRU HOLES =.020 SHALL BE +/- .005 INCH.

PLATED THRU HOLES >.020 SHALL BE +/- .003 INCH.

UNPLATED THRU HOLES SHALL BE +/- .002 INCH.

5. SOLDER MASK ON BOTH SIDES OF THE BOARD BE S.M.O.B.C, LPI, COLOR GREEN.

6. ALL MATERIAL SHALL BE NEMA GRADE FR-4 OR EQUIVALENT.

7. TOTAL BOARD THICKNESS SHALL BE .093 +/- .009 INCHES.

8. DRC'S MUST BE RAN ON THE GERBERS BEFORE BUILDING BOARD UNLESS PRIOR APPROVAL IS GIVEN IN WRITING.

9. SILKSCREEN BOTH SIDES WITH NON-CONDUCTIVE EPOXY-BASED WHITE INK.

10. MANUFACTURE TO IPC-A-600D SPECIFICATIONS.

11. MINIMUM ANNULAR RING SHALL BE .001".

12. MINIMUM ANNULAR RING AT EMERGENT CONDUCTORS SHALL BE .003".

13. BOW AND TWIST SHALL NOT EXCEED .010" PER INCH.

TOP SILKSCREEN

TOP SOLDER MASK

COMPONENT

GROUND PLANE

POWER PLANE

SOLDER

BOTTOM SOLDER MASK

BOTTOM SILKSCREEN

FILE NAMES
FROM ZIP FILE

TDMOT067-TOPSILK.PHO

TDMOT067-TOPMASK.PHO

TDMOT067-L1.PHO

TDMOT067-L2.PHO

TDMOT067-L3.PHO

TDMOT067-L4.PHO

TDMOT067-BOTMASK.PHO

TDMOT067-BOTSILK.PHO

LAYER SCHEDULE

SCALE: NONE

7

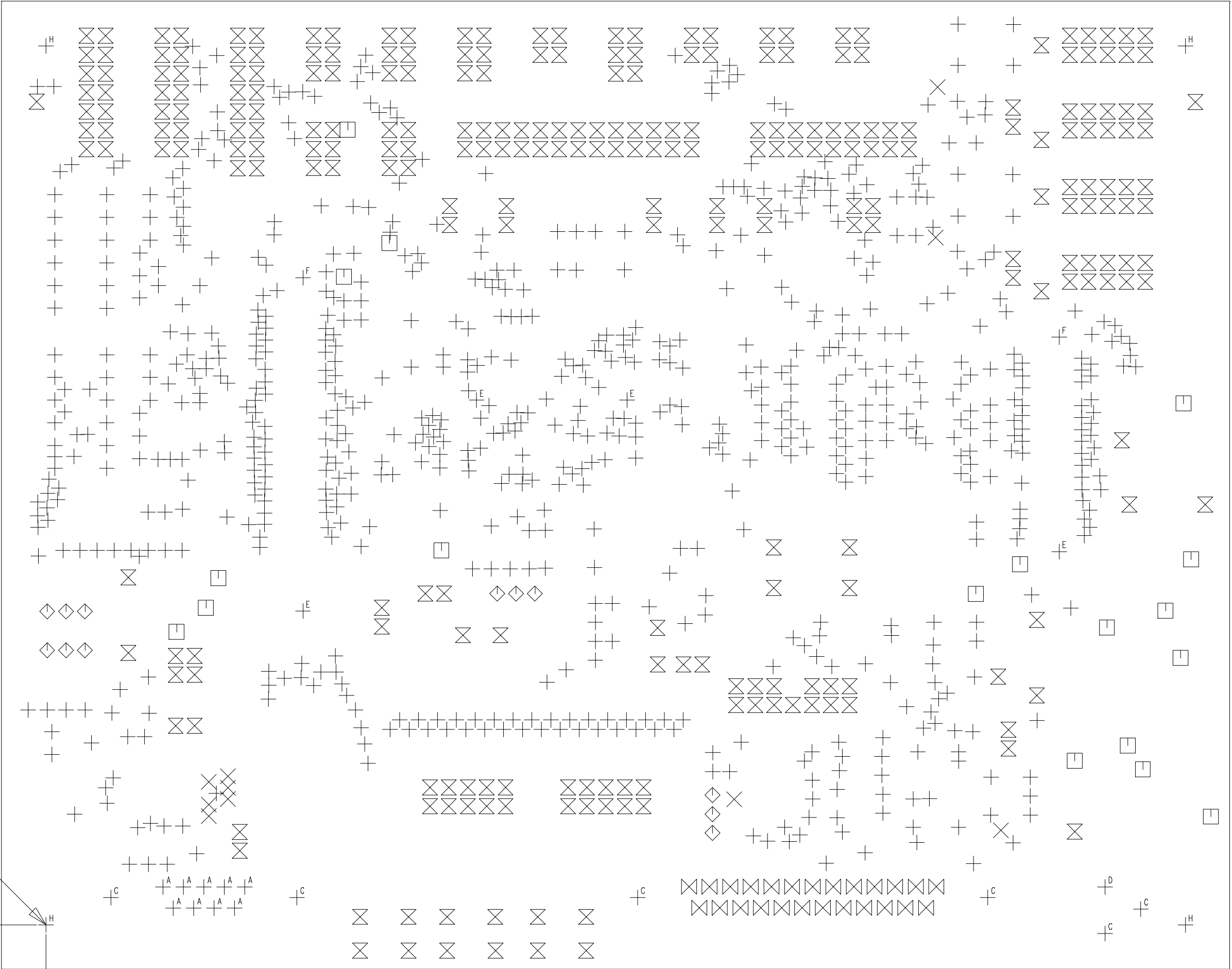
6.496"

5.118"

Datum 0,0

0.235"

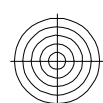
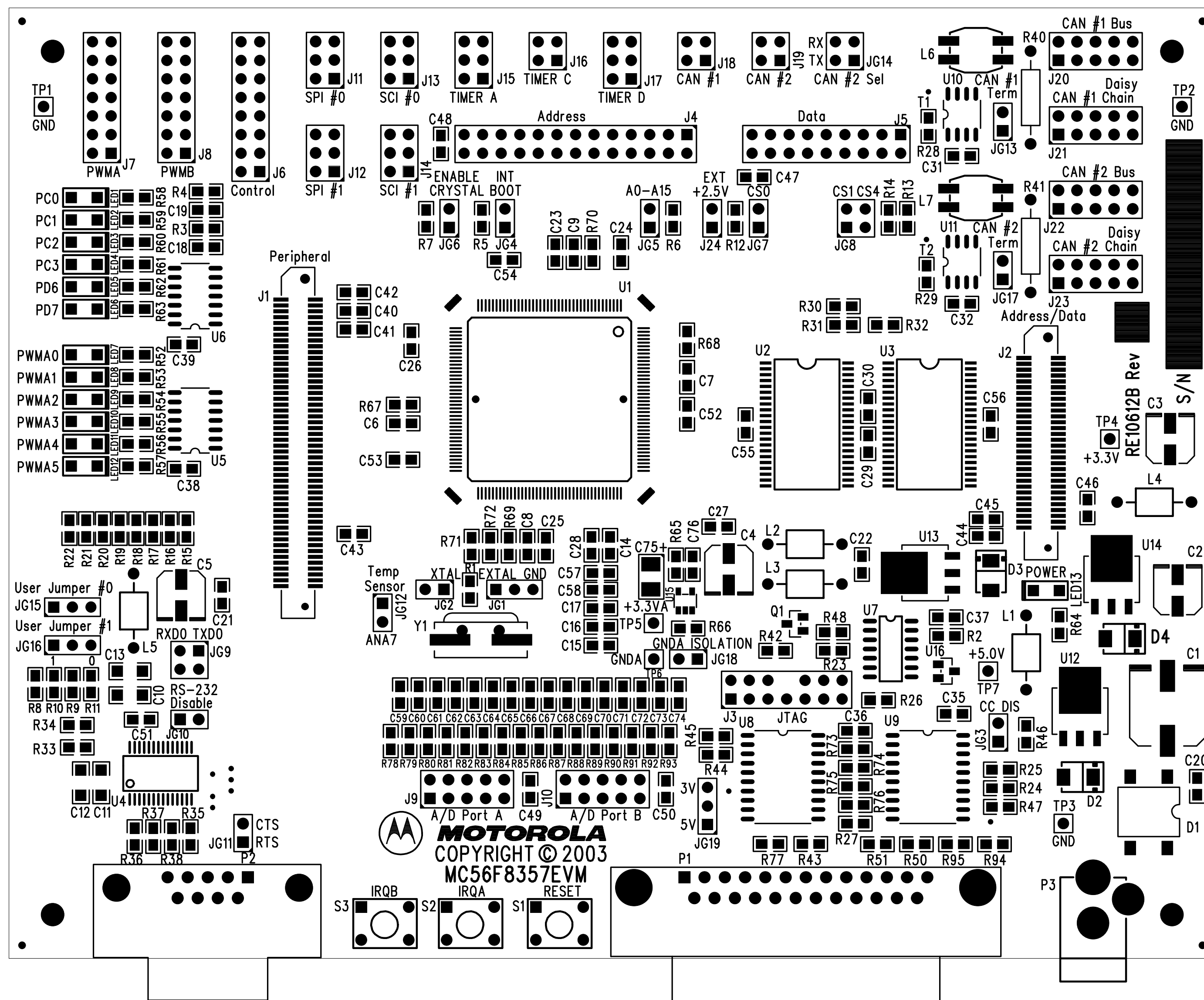
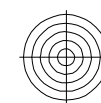
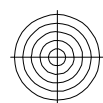
0.235"



REVISIONS			
LTR	DESCRIPTION	DATE	APPROVAL

SIZE	QTY	SYM	PLTD
12	753	+	PLTD
15	10	×	PLTD
20	18	□	PLTD
35	12	◇	PLTD
40	282	⊗	PLTD
41	25	⊗	PLTD
47	9	A	PLTD
120	6	C	PLTD
140	1	D	PLTD
40	4	E	NPLTD
52	2	F	NPLTD
125	4	H	NPLTD

		MATERIAL:	UNLESS OTHERWISE SPECIFIED			THIS DOCUMENT CONTAINS PROPRIETARY INFORMATION AND SHALL NOT BE DUPLICATED OR USED FOR ANY PURPOSE OTHER THAN THAT FOR WHICH PROVIDED OR DISCLOSED IN WHOLE OR IN PART, WITHOUT WRITTEN CONSENT.	ARTWORK DESIGNED BY: <div>TRAX Design L.C.9500 W. PARKER LANE, #721AUSTIN, TEXAS 78717(512) 733-5075</div>		
		FINISH:	DIMENSIONS ARE IN INCHES AND APPLY AFTER FINISH DIMENSIONS IN BRACKETS [] ARE IN MILLIMETERS INTERPRET DRAWING PER MIL-D-1000				ENGINEER		
			TOLERANCES				CHECKER		
			HOLE TOLERANCES PER 78027				DRAFTSMAN	JK	06-04-03
			DECIMALS .XX +/- .XXX +/-	ANGLES +/-	SURFACES MICROINCHES				
			PART TO BE FREE OF BURRS						
			BREAK EDGES	BEND RADIUS	BEND RELIEF	DO NOT SCALE DRAWING			
			MAX	MAX	MAX				
NEXT ASSY	USED ON					SCALE 1:1			
						TD# TDMOT067		SHEET 1 OF 1	



ARTWORK DESIGNED BY:		ARTWORK FOR:		
TRAX Design L.C.		Motorola		
9500 W. PARMER LANE, #721		BOARD NAME:	JOB #:	DATE:
AUSTIN, TEXAS 78717 (512) 733-5075		MC56F8357EVM	TDMOT067	06-04-03