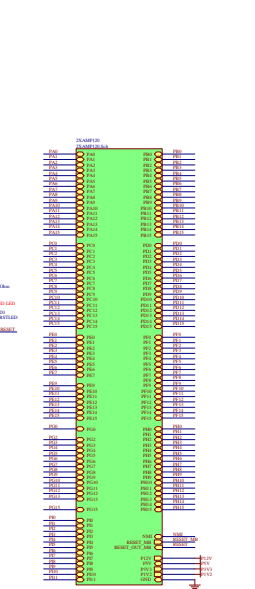
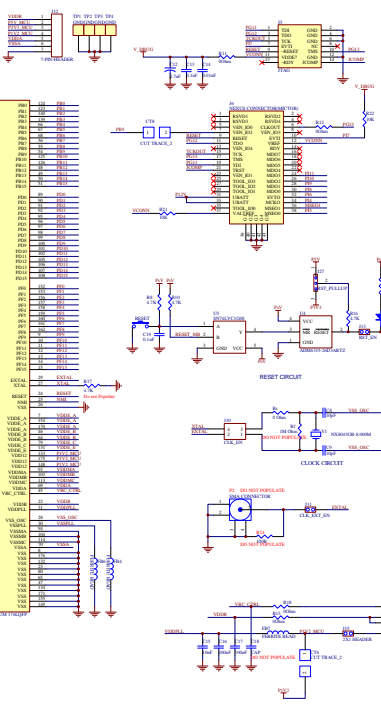
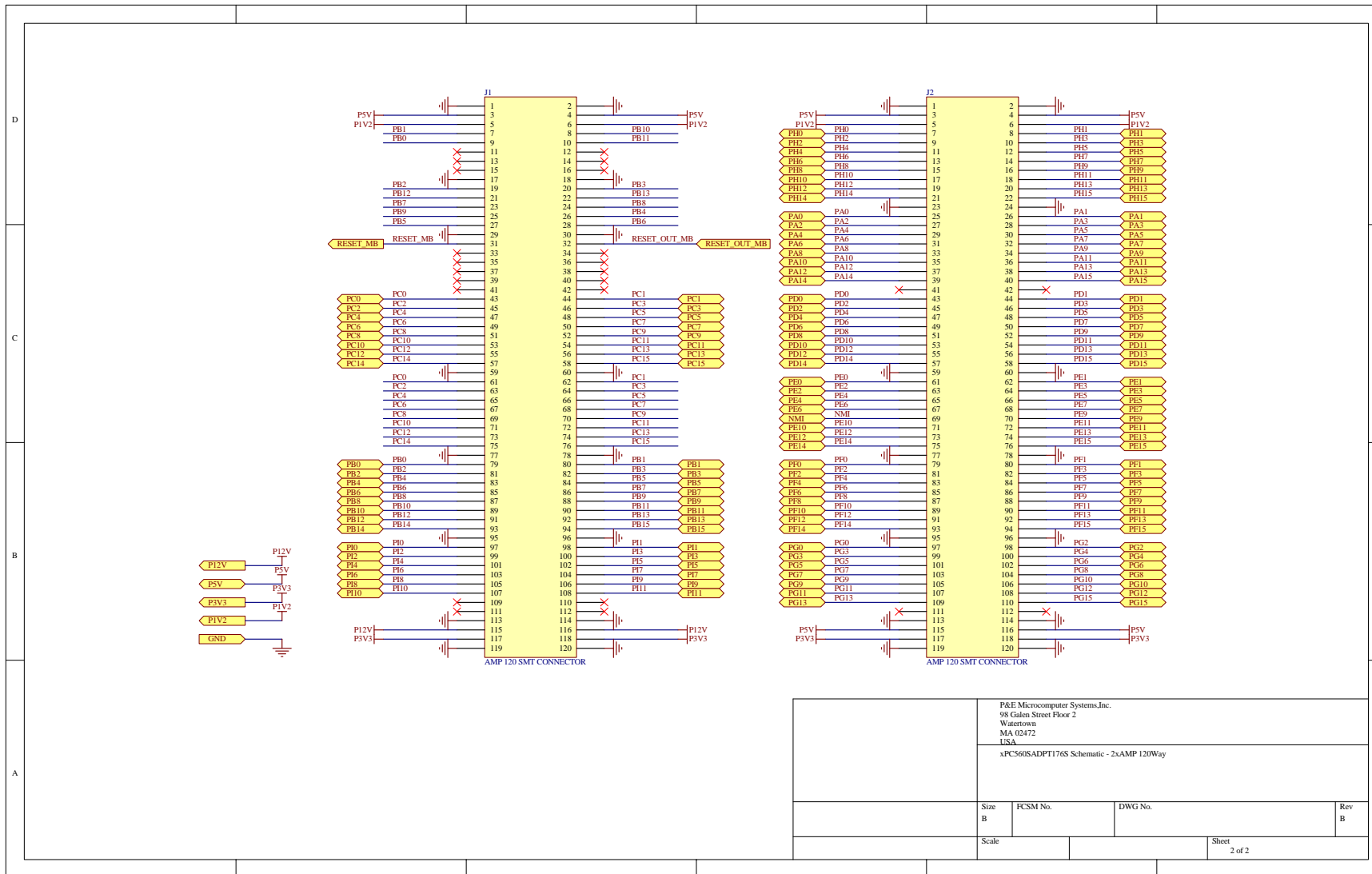


| PIN | FUNCTION | INTERNAL SIGNAL |
|-------|----------|-----------------|
| PFC0 | ... | ... |
| PFC1 | ... | ... |
| PFC2 | ... | ... |
| PFC3 | ... | ... |
| PFC4 | ... | ... |
| PFC5 | ... | ... |
| PFC6 | ... | ... |
| PFC7 | ... | ... |
| PFC8 | ... | ... |
| PFC9 | ... | ... |
| PFC10 | ... | ... |
| PFC11 | ... | ... |
| PFC12 | ... | ... |

Note: This is a simplified representation of the detailed pin list shown in the original diagram.



| | |
|------------------|--|
| Rev 01.01 | |
| Date: 2023-10-24 | |
| Author: [Name] | |
| Reviewer: [Name] | |



P&E Microcomputer Systems, Inc.
 98 Galen Street Floor 2
 Watertown,
 MA 02472
 USA

xPC560SADPT176S Schematic - 2xAAMP 120Way

| | | | |
|-----------|----------|-----------------|----------|
| Size B | FCSM No. | DWG No. | Rev B |
| Scale | | Sheet 2 of 2 | |

XPC560S 176LQFP MINIMODULE

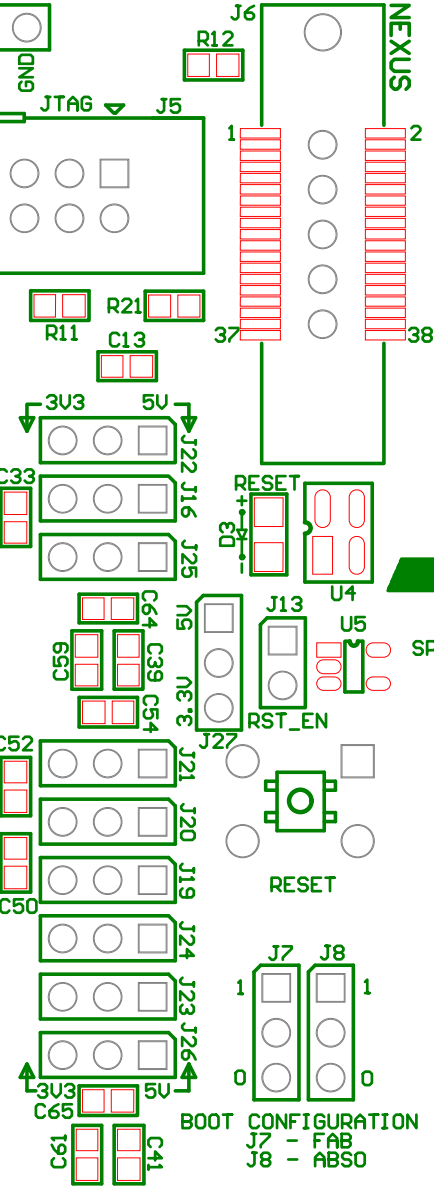
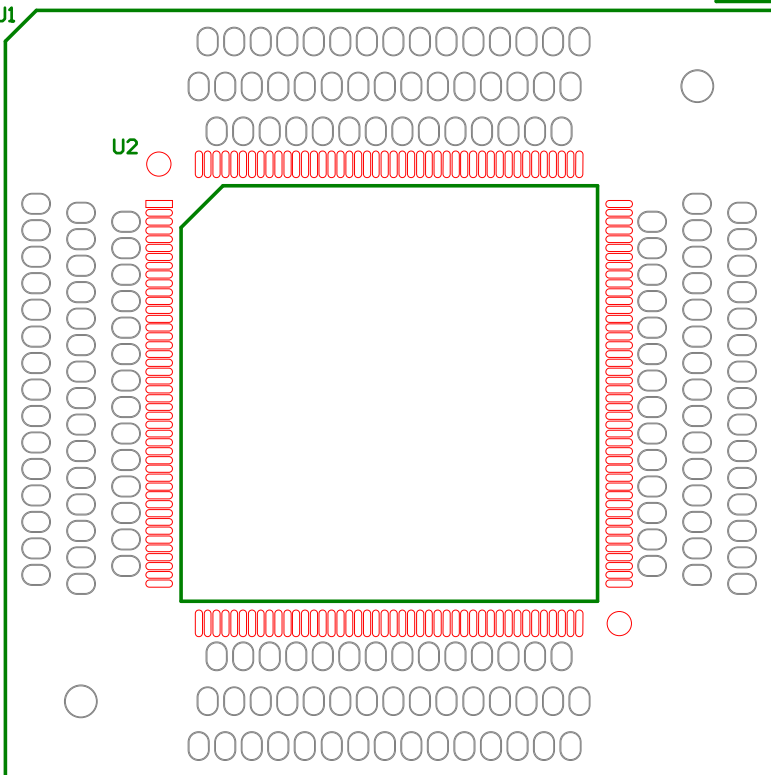
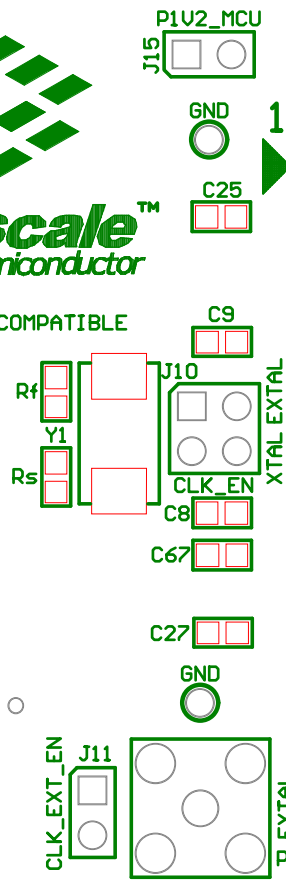
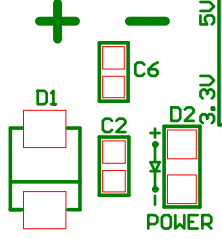
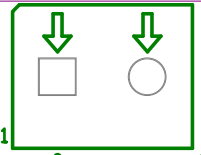
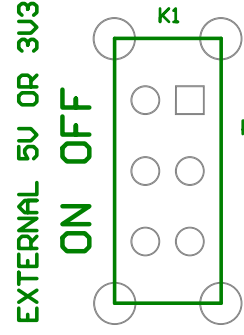
Rev. B



MPC560xS COMPATIBLE



SPC560Sx COMPATIBLE



- J16 - UDDR
- J19 - UDDMA
- J20 - UDDMB
- J21 - UDDMC
- J22 - VDDE_A
- J23 - VDDE_B
- J24 - VDDE_C
- J25 - VDDE_E
- J26 - UDDA
- J27 - RST_PULLUP

BOOT CONFIGURATION
 J7 - FAB
 J8 - ABSO



