

DWG. NO.		SCH-CAR-3250-01	SH.	1	REV.	1
REVISIONS						
REV	DESCRIPTION				DATE	APPROVED
00	Release for review and Layout quotation				01/04/08	
01	REFDES re-ordered; Release for Assembly				03/17/08	

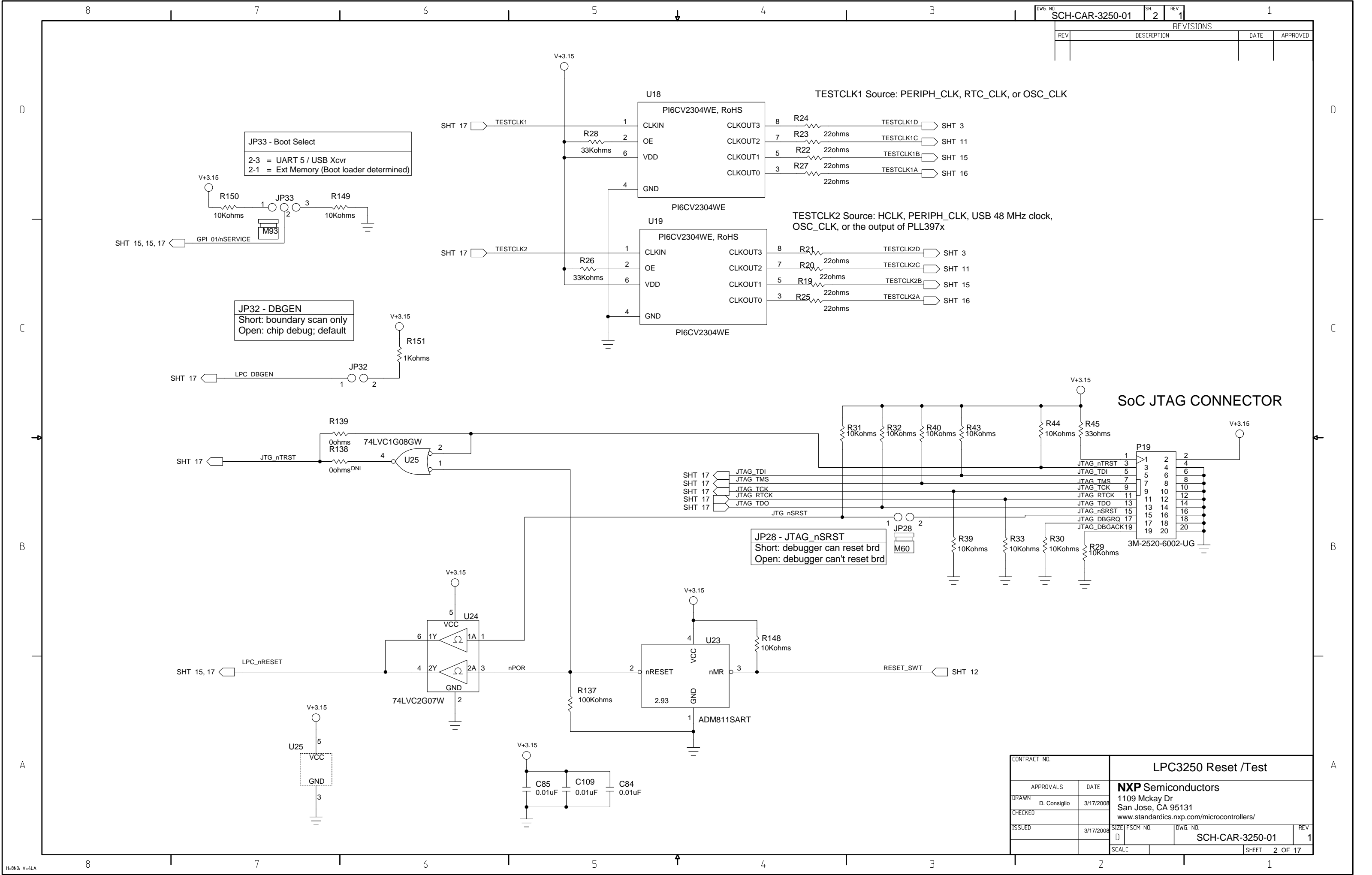
NXP Semiconductors

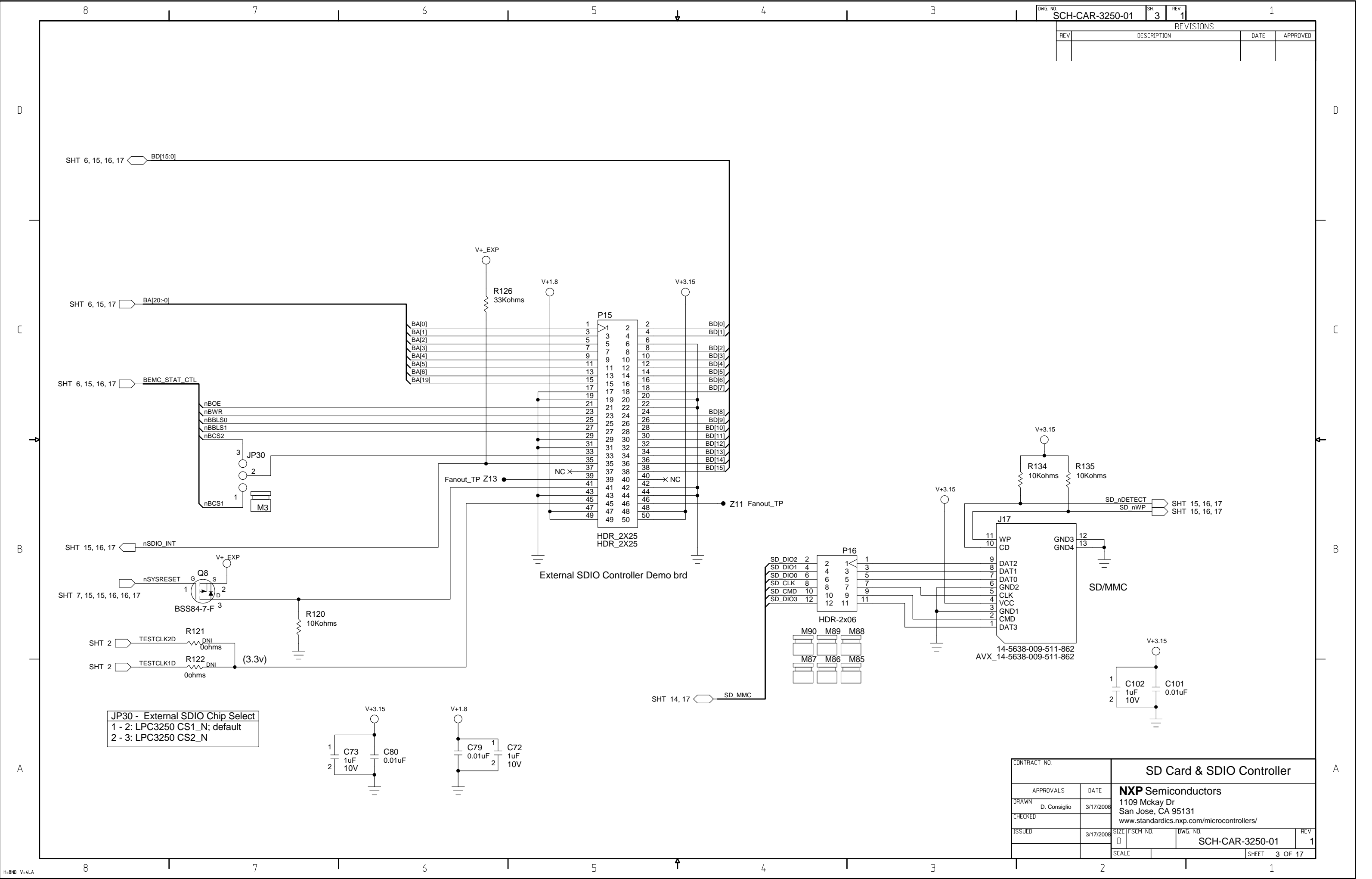
LPC3250 Validation Platform Carrier Board Schematics

Mar 14, 2008

- Page 1 - Index
- Page 2 - LPC3250 Reset /Test
- Page 3 - SD Card & SDIO Controller
- Page 4 - Serial Ports
- Page 5 - NAND FLASH
- Page 6 - Static Memory
- Page 7 - USB OTG / SPI EEPROM
- Page 8 - Matrix Pushbuttons / LEDS
- Page 9 - 10/100Mhz Ethernet
- Page 10 - Universal LCD Interface
- Page 11 - Audio Codec
- Page 12 - Power Control
- Page 13 - Power Supply
- Page 14 - Logic Analyzer Connectors1
- Page 15 - Logic Analyzer Connectors2
- Page 16 - Expansion Connectors
- Page 17 - Module Board Inter-Connect

CONTRACT NO.		Sheet Index			
APPROVALS		DATE	NXP Semiconductors 1109 Mckay Dr San Jose, CA 95131 www.standardics.nxp.com/microcontrollers/		
DRAWN		3/17/2008			
D. Consiglio					
CHECKED					
ISSUED		3/17/2008	SIZE	FSCM NO.	DWG. NO.
			D		SCH-CAR-3250-01
			SCALE		REV 1
					SHEET 1 OF 17





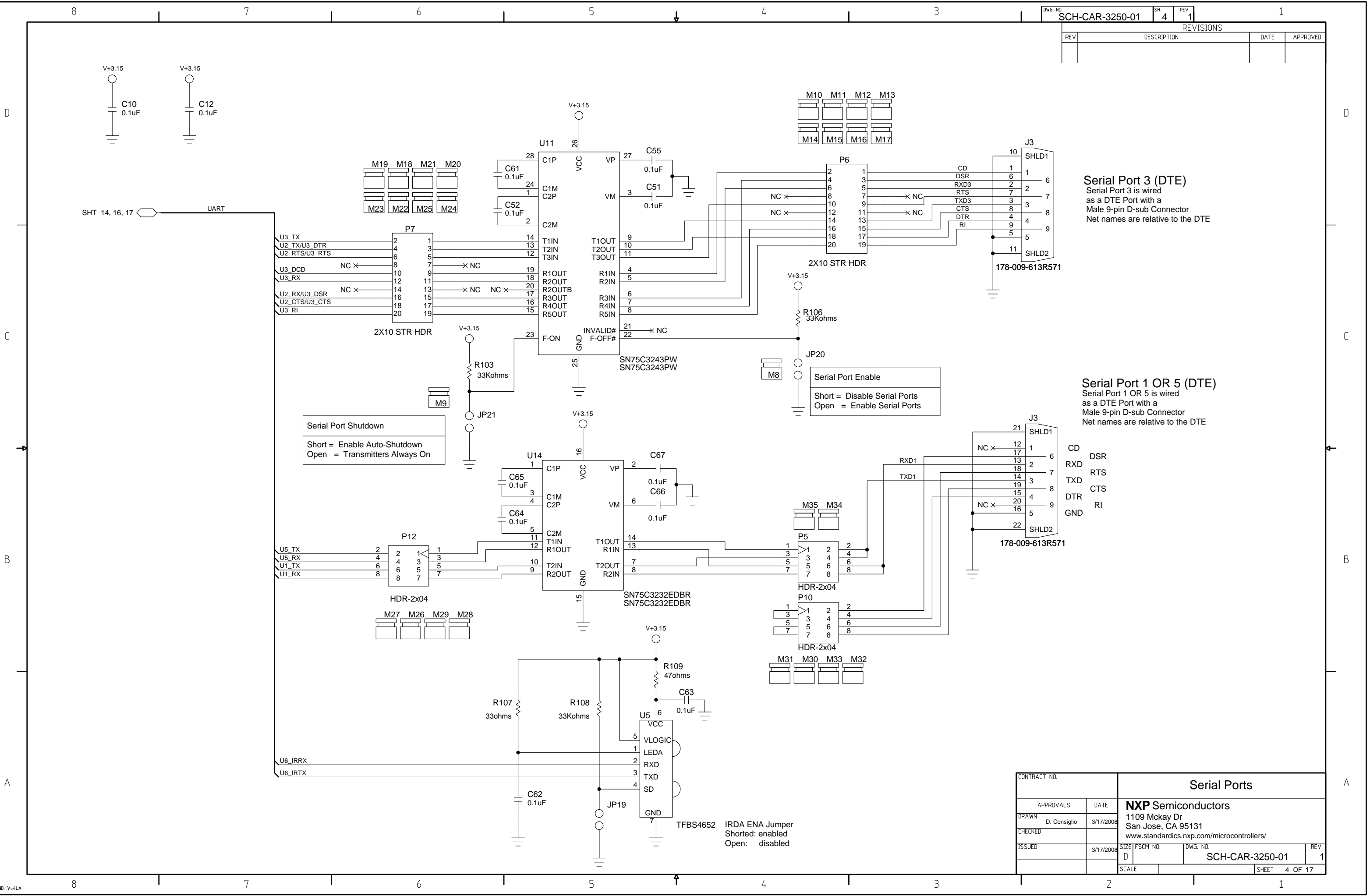
DWG. NO.		SCH-CAR-3250-01		SH	3	REV	1	1	
REVISIONS									
REV	DESCRIPTION						DATE	APPROVED	

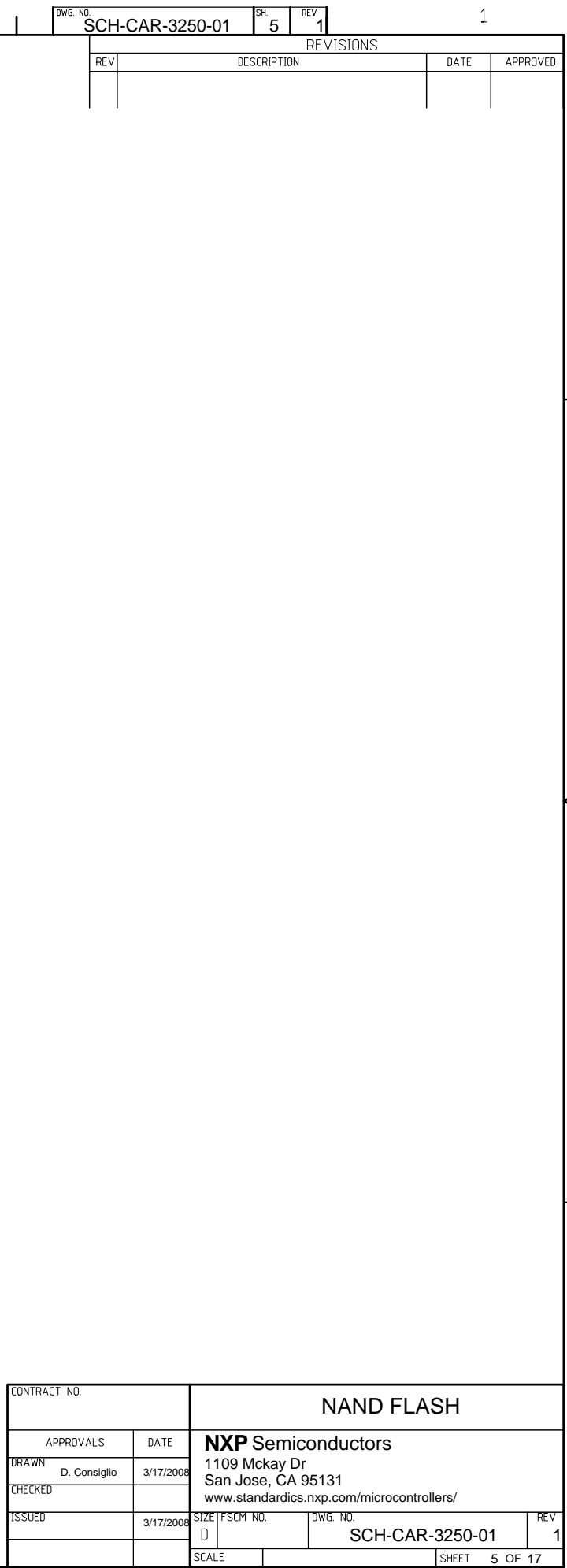
CONTRACT NO.		SD Card & SDIO Controller			
APPROVALS		DATE	NXP Semiconductors		
DRAWN		D. Consiglio	3/17/2008	1109 Mckay Dr	
CHECKED				San Jose, CA 95131	
ISSUED				www.standardics.nxp.com/microcontrollers/	
		3/17/2008	SIZE	FSCM NO.	DWG. NO.
			D		SCH-CAR-3250-01
			SCALE		REV
					1
				SHEET	3 OF 17

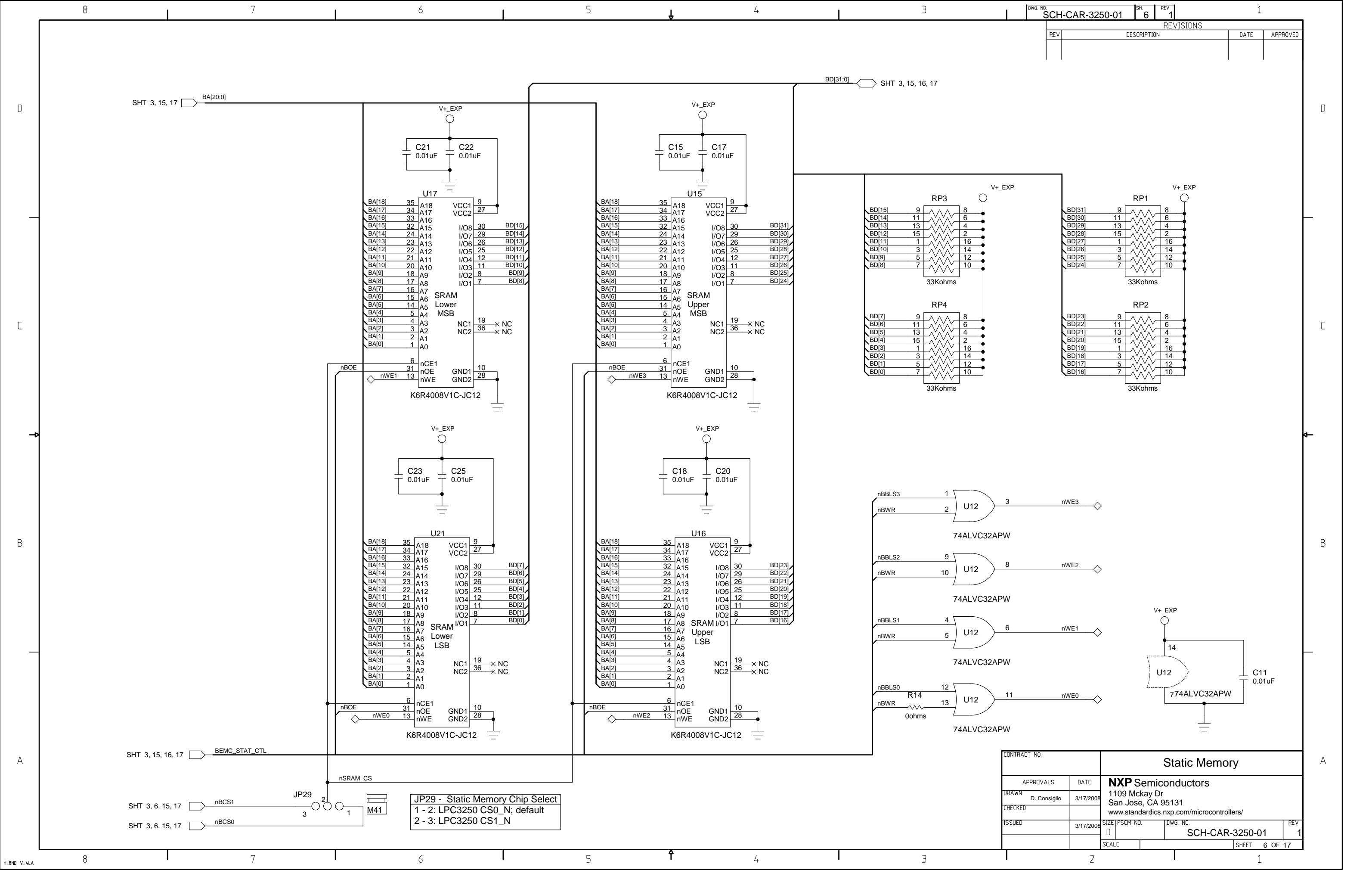
Serial Port 3 (DTE)
Serial Port 3 is wired
as a DTE Port with a
Male 9-pin D-sub Connector
Net names are relative to the DTE

Serial Port 1 OR 5 (DTE)
Serial Port 1 OR 5 is wired
as a DTE Port with a
Male 9-pin D-sub Connector
Net names are relative to the DTE

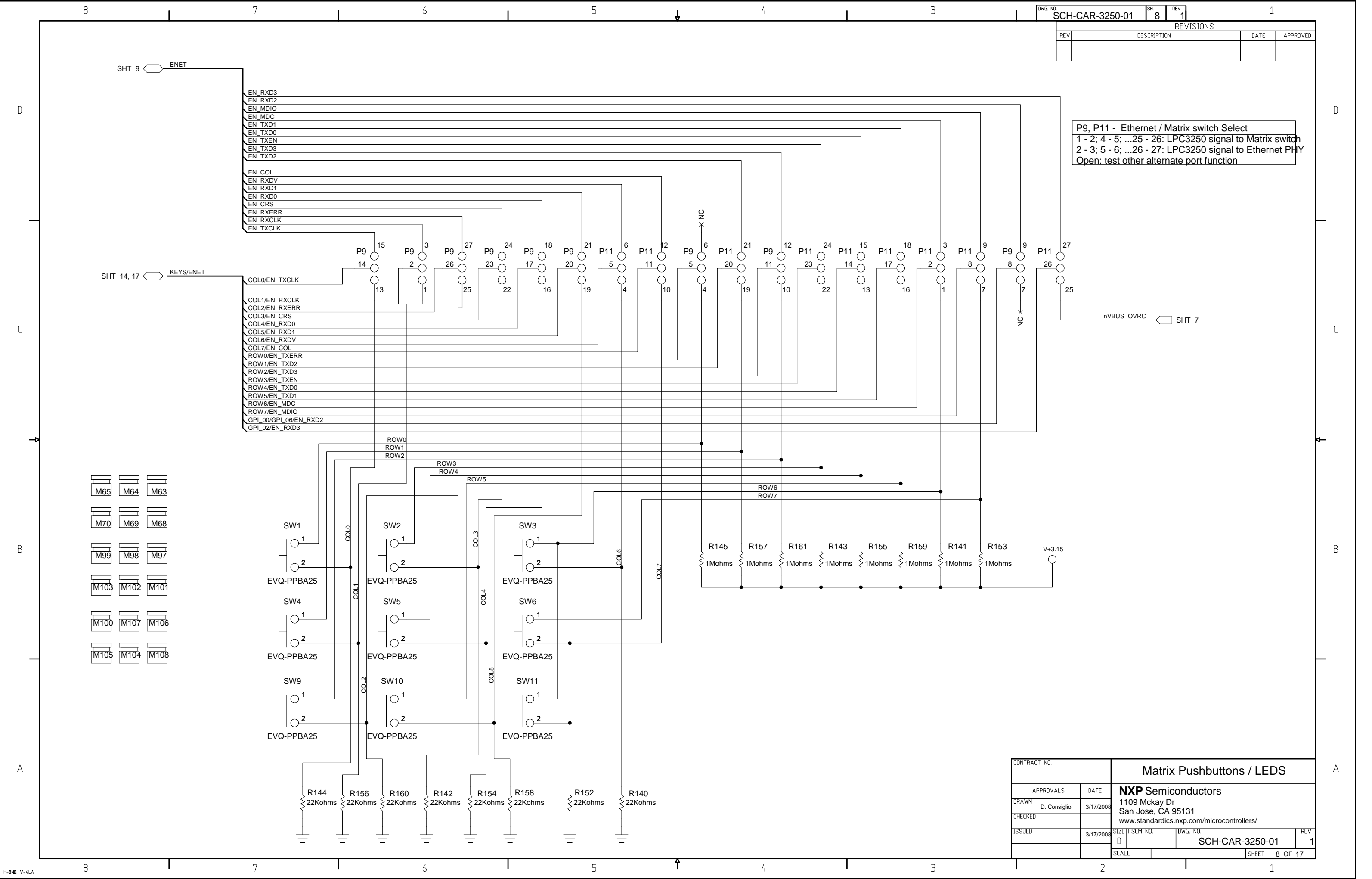
CONTRACT NO.		Serial Ports		
APPROVALS	DATE	NXP Semiconductors 1109 Mckay Dr San Jose, CA 95131 www.standardics.nxp.com/microcontrollers/		
DRAWN D. Consiglio	3/17/2008			
CHECKED		SIZE	FSCM NO.	DWG. NO.
ISSUED	3/17/2008	D		SCH-CAR-3250-01
SCALE		SHEET		4 OF 17





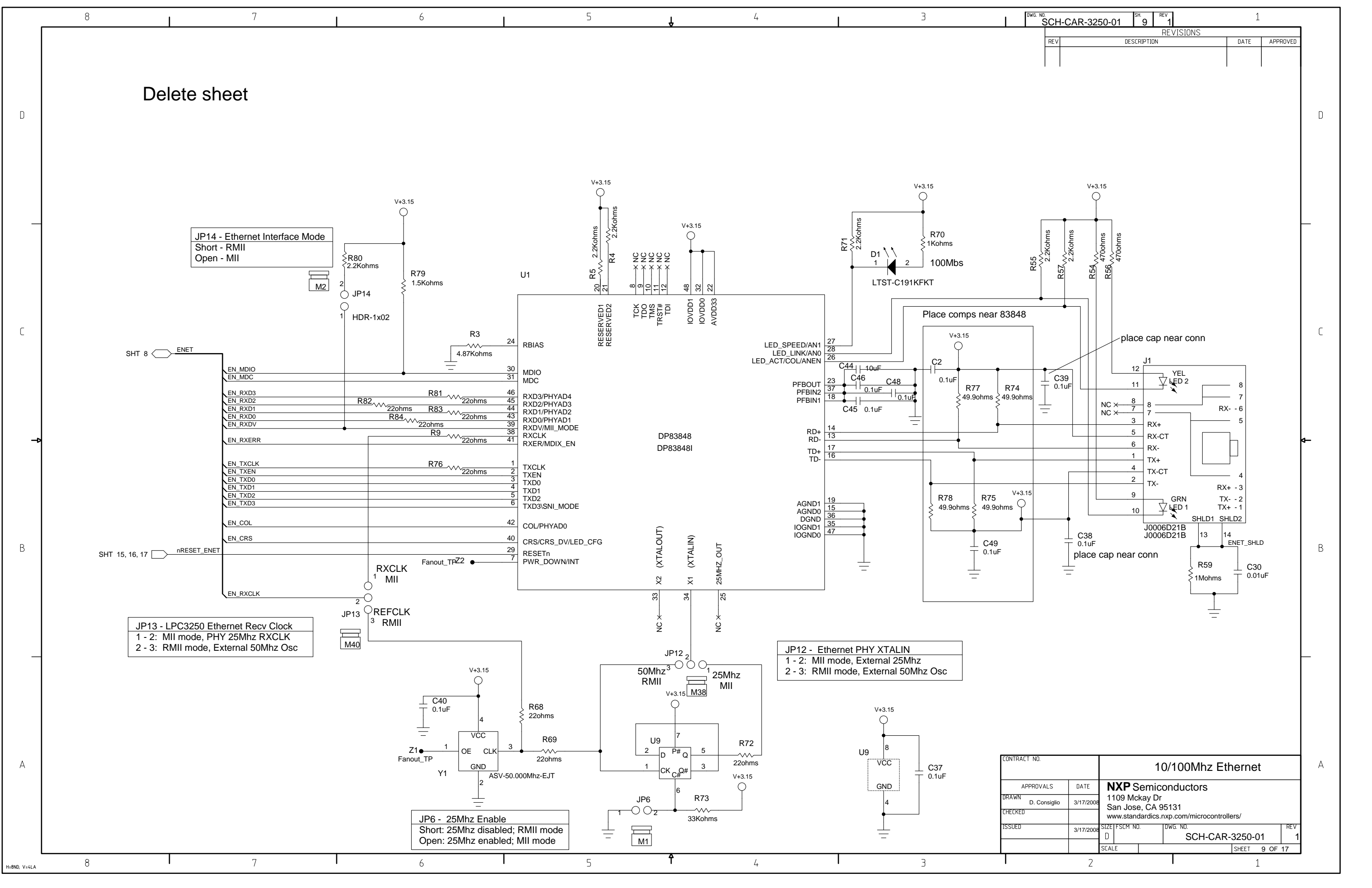






P9, P11 - Ethernet / Matrix switch Select
1 - 2; 4 - 5; ...25 - 26: LPC3250 signal to Matrix switch
2 - 3; 5 - 6; ...26 - 27: LPC3250 signal to Ethernet PHY
Open: test other alternate port function

CONTRACT NO.		Matrix Pushbuttons / LEDs		
APPROVALS	DATE	NXP Semiconductors 1109 Mckay Dr San Jose, CA 95131 www.standardics.nxp.com/microcontrollers/		
DRAWN D. Consiglio	3/17/2008			
CHECKED				
ISSUED	3/17/2008			
SCALE		SIZE D	FSCM NO.	DWG. NO. SCH-CAR-3250-01
				REV 1
				SHEET 8 OF 17



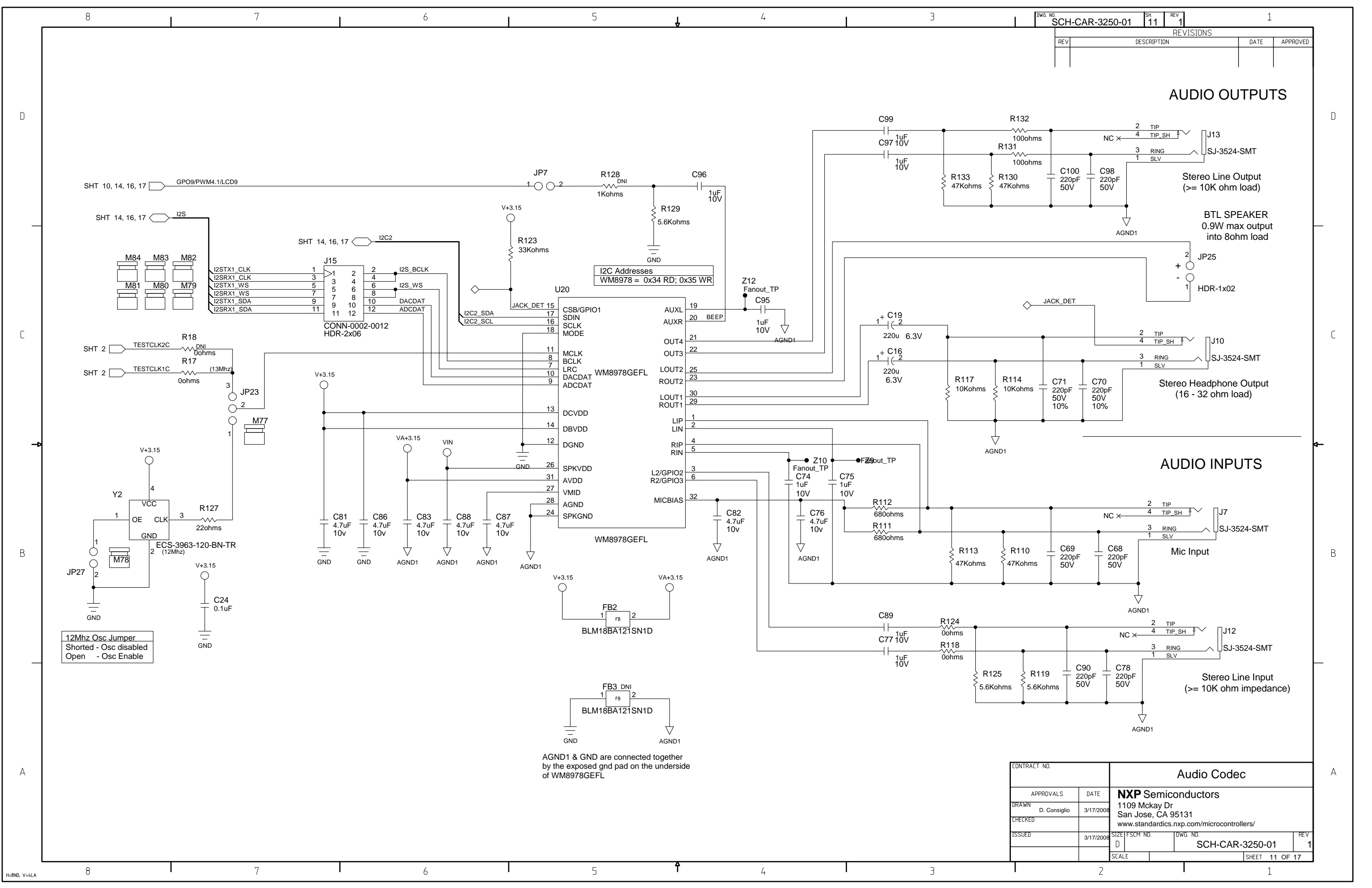
D
C
B
A

D
C
B
A

Delete sheet

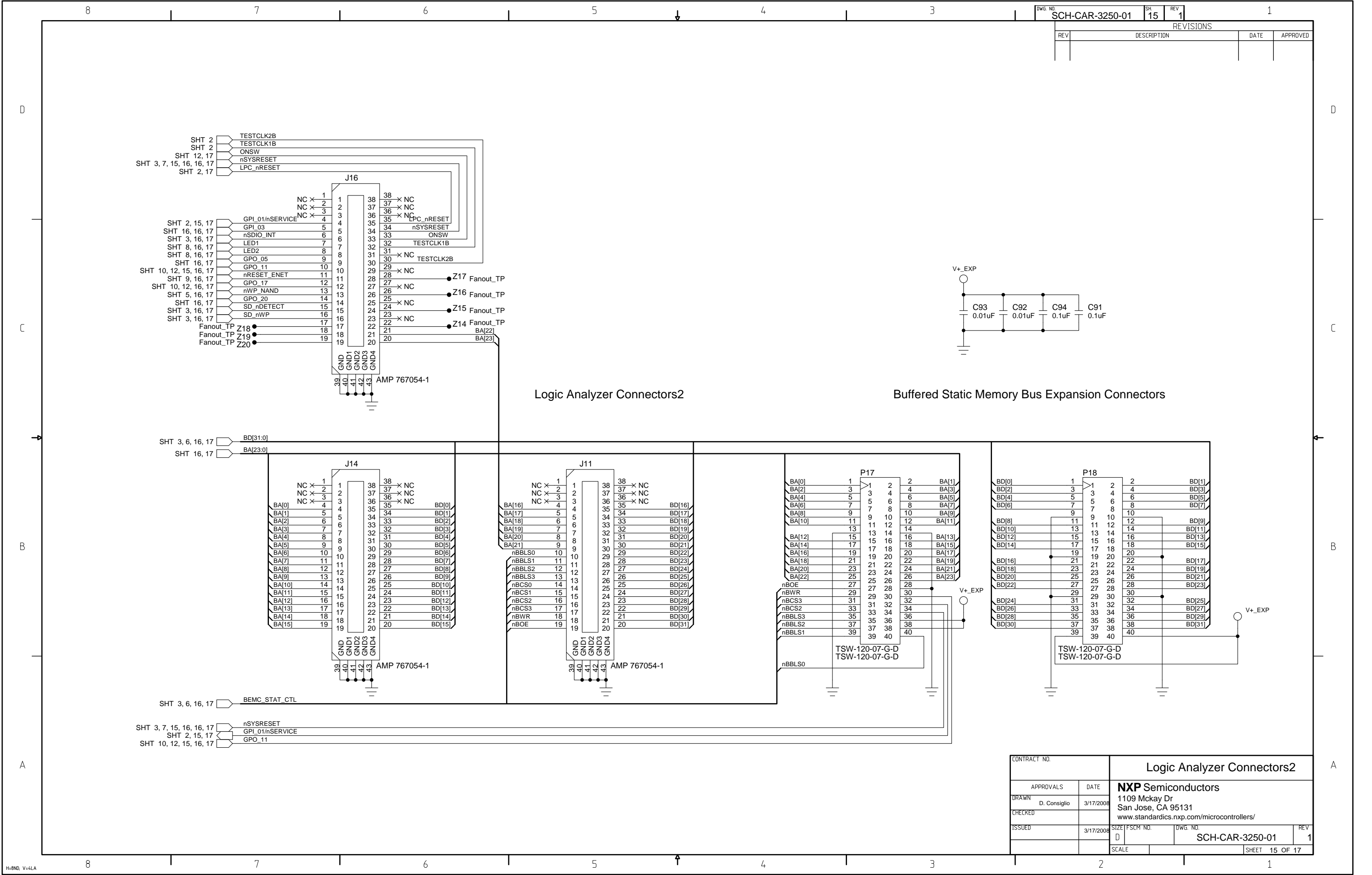
DWG. NO.		SCH-CAR-3250-01		SH	9	REV	1	1	
REVISIONS									
REV	DESCRIPTION						DATE	APPROVED	

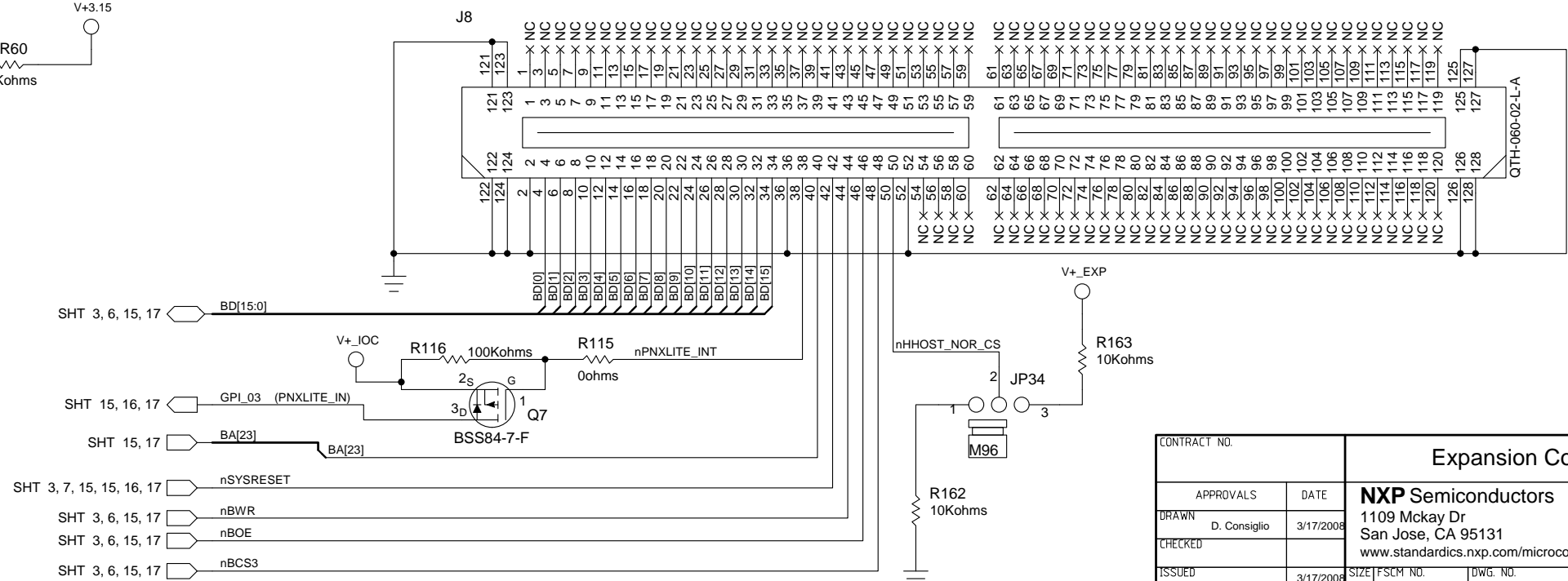
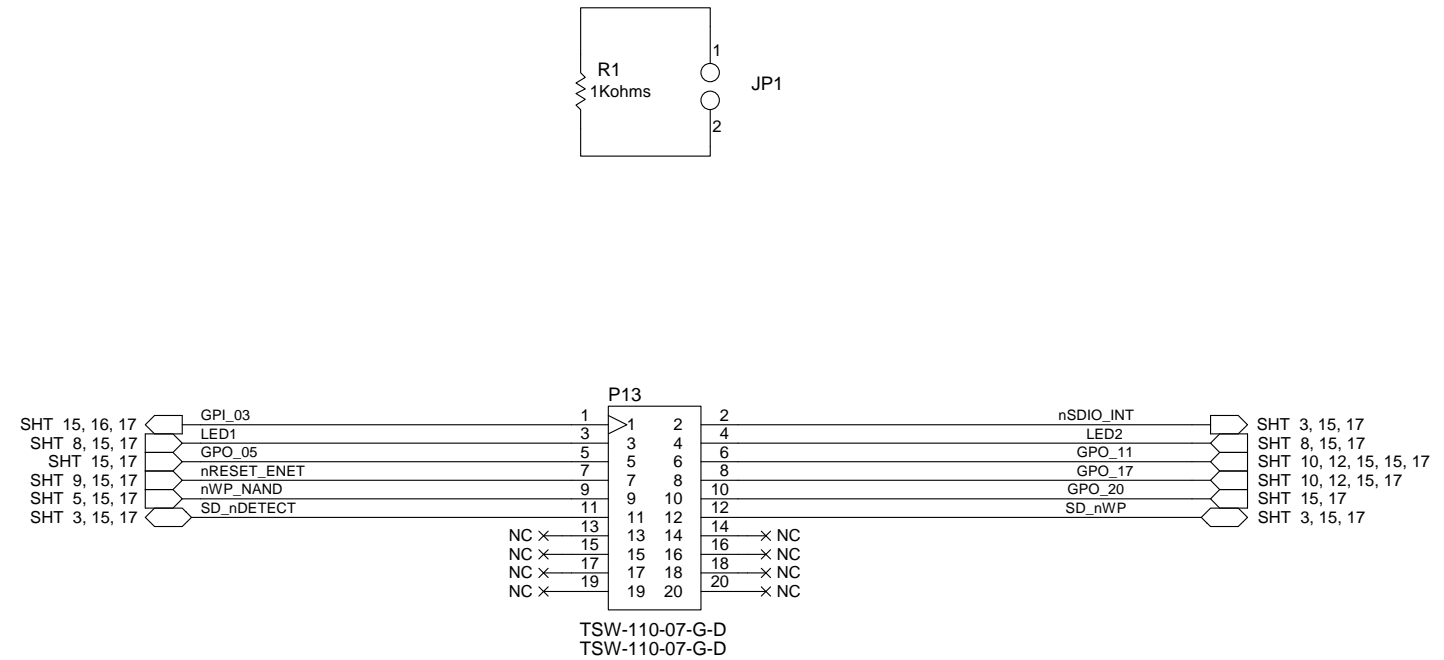
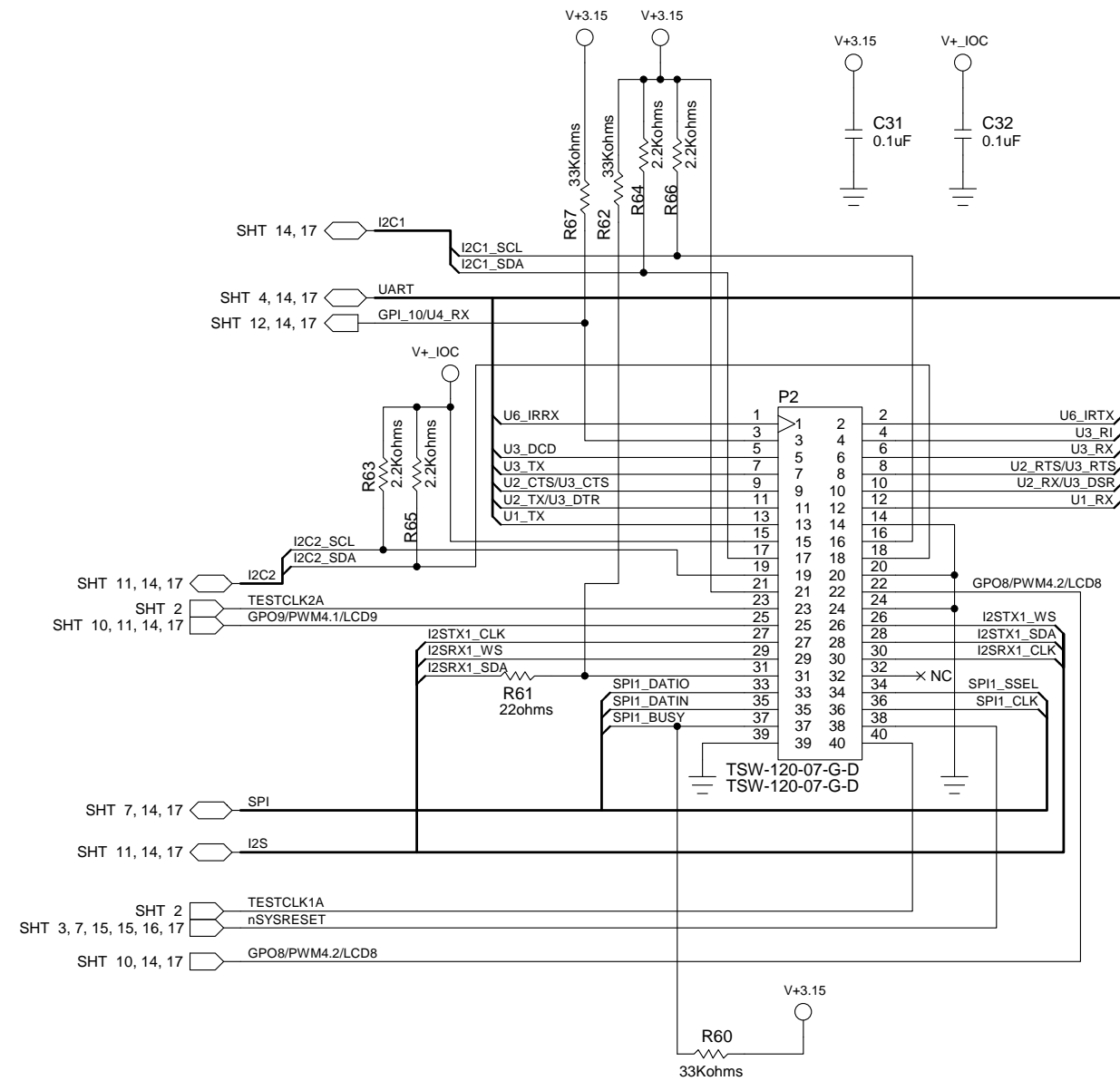
CONTRACT NO.		10/100Mhz Ethernet			
APPROVALS		DATE	NXP Semiconductors 1109 McKay Dr San Jose, CA 95131 www.standardics.nxp.com/microcontrollers/		
DRAWN		D. Consiglio			
CHECKED					
ISSUED		3/17/2008			
			SIZE	FSCM NO.	DWG. NO.
			D		SCH-CAR-3250-01
			SCALE		SHEET 9 OF 17



DWG. NO.		SH.	REV.
SCH-CAR-3250-01		11	1
REVISIONS			
REV.	DESCRIPTION	DATE	APPROVED

CONTRACT NO.		Audio Codec		
APPROVALS		DATE	NXP Semiconductors 1109 Mckay Dr San Jose, CA 95131 www.standardics.nxp.com/microcontrollers/	
DRAWN		3/17/2008		
CHECKED				
ISSUED		3/17/2008		
SCALE		SIZE	FSCM NO.	DWG. NO.
		D		SCH-CAR-3250-01
				REV 1
				SHEET 11 OF 17





CONTRACT NO.		Expansion Connectors			
APPROVALS	DATE	NXP Semiconductors 1109 Mckay Dr San Jose, CA 95131 www.standards.nxp.com/microcontrollers/			
DRAWN D. Consiglio	3/17/2008				
CHECKED					
ISSUED	3/17/2008	SIZE D	FSCM NO.	DWG. NO. SCH-CAR-3250-01	REV 1
		SCALE			SHEET 16 OF 17

