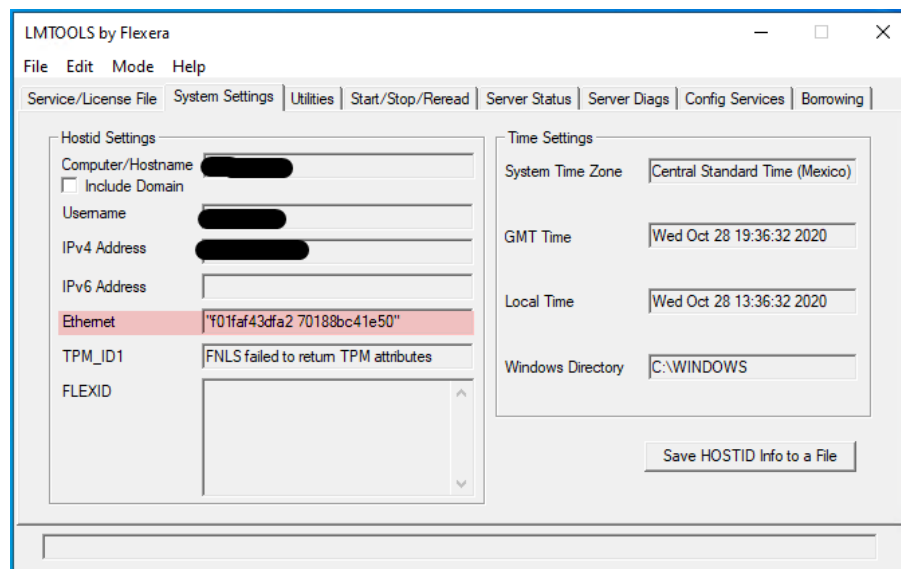


# Floating Manager setup README File

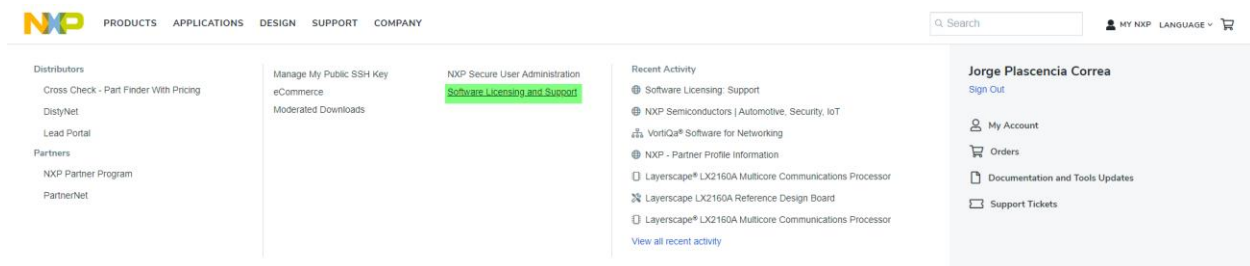
1. Go to C: and create a new folder "flexlm".
2. Extract the zip file in this folder.
3. Run the **LMTools** to get your Ethernet Address

## 3.1 Click on the System Settings






## 3.2 Use the first Ethernet address from the list in case the system shows more.

4. Access [www.nxp.com](http://www.nxp.com) and login
5. Click on **Software Licensing and Support** from the **My NXP** menu



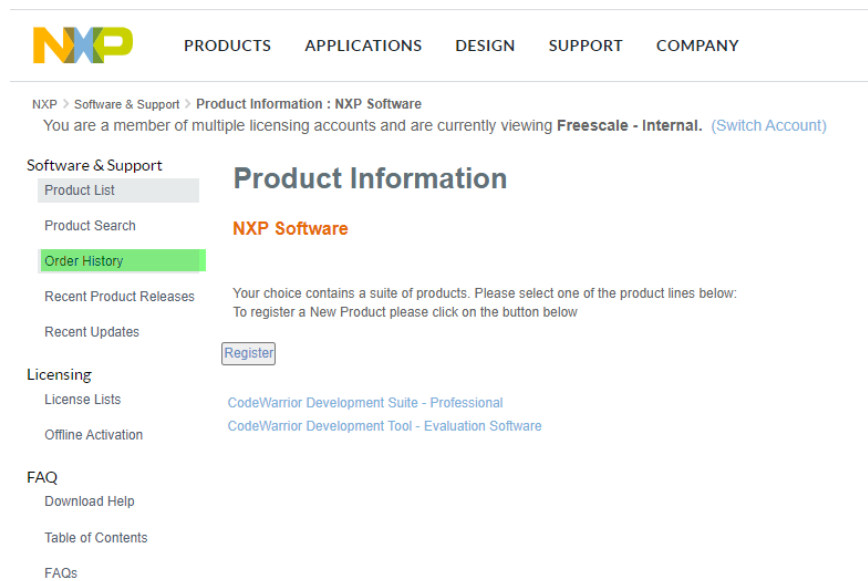
6. Click on View Accounts

## Software Licensing and Support

 <b>Expired Software(31)</b> View expired software, extend and renew software when available <a href="#">Renew Expired Software &gt;</a>	 <b>Software accounts</b> Access to software and accounts <a href="#">View accounts &gt;</a>	 <b>Activate registration code</b> Active and register new software to active accounts <a href="#">Activate registration code &gt;</a>
--	--	--

6.1. Select the account where the Suite has been added (if applicable)

7. Click on Order History from the left-hand menu



NXP > Software & Support > Product Information : NXP Software

You are a member of multiple licensing accounts and are currently viewing **Freescal** - Internal. ([Switch Account](#))

**Software & Support**

- Product List
- Product Search
- Order History**
- Recent Product Releases
- Recent Updates

**Licensing**

- License Lists
- Offline Activation

**FAQ**

- Download Help
- Table of Contents
- FAQs

### Product Information

**NXP Software**

Your choice contains a suite of products. Please select one of the product lines below:  
To register a New Product please click on the button below

[Register](#)

[CodeWarrior Development Suite - Professional](#)  
[CodeWarrior Development Tool - Evaluation Software](#)

8. Find the Suite that you register

9. Click on top of the Oder ID Line

## Order History

**Find Line Items**  
Search   
For

**Filter By**  
☒ Order Date  
☐ Entitlement Exp. Date  
From   
To

[Search Line Items](#)

[1](#) to 2 of 2 [»](#) [»](#) Entries per page: [200](#)

Order ID / Line #	Details	Entitlement Exp.
<a href="#">DLP-PRO-NL_WNHNKNO427 / 1</a>	<p>Catalog Item ID DLP-PRO-NL</p> <p>Catalog Item Name CodeWarrior Development Suite - Professional Edition, Perpetual Model, Node-locked License</p> <p><a href="#">Additional Details</a></p>	Dec 31, 2014
<a href="#">CWX-MGT-EX_0000ProdTel / 1</a>	<p>Catalog Item ID CWX-MGT-EX</p> <p>Catalog Item Name CodeWarrior Development Studio for mobileGT (Classic IDE) EVAL</p> <p><a href="#">Additional Details</a></p>	Nov 5, 2015

10. Hover over the three lines menu from the right-hand side

11. Click on License(s)

[NXP](#) > [Software & Support](#) > [Order Detail](#)  
You are a member of multiple licensing accounts and are currently viewing **Freescalce - Internal**. ([Switch Account](#))

**Software & Support**  
[Product List](#)  
[Product Search](#)  
[Order History](#)  
[Recent Product Releases](#)  
[Recent Updates](#)

**Order Detail**  
Click on the "Download" link next to the product to download it (only available when applicable).  
  
Entitlement ID: DLP-PRO-NL\_WNHNKNO427  
**Order Date:** Dec 16, 2014  
**PO Number:** 407597

**Licensing**  
[License Lists](#)  
[Offline Activation](#)

Line	Product Description	Manufacturer Part Number	Qty	Entitlement Expiration Date
+	1 CodeWarrior Development Suite - Professional Edition, Perpetual Model, Node-locked License	DLP-PRO-NL		

**FAQ**  
[Download Help](#)  
[Table of Contents](#)  
[FAQs](#)

[License\(s\)](#)  
[Download](#)  
[Split](#)

12. Select the product that you like to generate a license for or click on Select ALL

## License Information

Below is the License Information for the Order Line you selected.

Product: CodeWarrior Development Suite - Professional Edition, Perpetual  
Model, Floating License  
Effective Date: Jan 30, 2020  
Expiration Date: Jan 29, 2021  
Order Number: CWP-PRO-FL\_FSRXZ71302  
Order Date: Jan 30, 2020  
PO Number:  
Line Number: 1

<b>Generate</b>	<b>View</b>
<input checked="" type="checkbox"/> Deselect All	Select All <input type="checkbox"/>

☒  
License Applicable to Product(s):  

Version	Description
9.2	CodeWarrior Development Studio MobileGT Processor Edition (Windows Hosted) WIN <a href="#">(View EULA)</a>

1 Available

☒  
License Applicable to Product(s):  

Version	Description
8.8	CodeWarrior DS for Power Architecture, Linux Application Edition (Windows Hosted) WIN <a href="#">(View EULA)</a>

1 Available

☒  
License Applicable to Product(s):  

Version	Description
8.8	CodeWarrior DS for Power Architecture, Linux Platform Edition (Linux Hosted) LINUX <a href="#">(View EULA)</a>

1 Available

☒  
License Applicable to Product(s):  

Version	Description
10.3	CodeWarrior for Power Architecture - Professional Edition (Eclipse-Windows Hosted) <a href="#">(View EULA)</a>

1 Available

☒  
License Applicable to Product(s):  

Version	Description
10.3	eTPU/eTPU2 Command-Line Compiler <a href="#">(View EULA)</a>
10.2.2	eTPU/eTPU2 Command-Line Compiler <a href="#">(View EULA)</a>

1 Available

☒  
License Applicable to Product(s):  

Version	Description
10.11	CodeWarrior for Power Architecture - Professional Edition (Eclipse-Linux hosted) <a href="#">(View EULA)</a>

1 Available

☒  
License Applicable to Product(s):  

Version	Description
10.11	CodeWarrior for Power Architecture - Professional Edition (Eclipse-Windows Hosted) <a href="#">(View EULA)</a>

1 Available

13. Scroll to the bottom of the page and click on Generate

14. Enter the Server Host ID by selecting the Ethernet Address and completing the filed

\* may not be unique

Select an existing License Host from the list or enter a new one

Existing License Hosts: --Select an existing License Host--

Server Host ID \*

Server Name / IP Address \*

Port

Host Description

For high-availability environments, license files can run in a redundant 3 - license server cluster. If you want to use this option, enter both redundant servers below as well as the primary server above, including port numbers. Redundant license servers are not required. (Optional)

Red. Server Host ID

Server Name / IP Address

Port

Host Description

Red. Server Host ID

Server Name / IP Address

Port

Host Description

15. Enter the Server name or IP address

15.1 if you will have a redundant server please enter the date in the section below

\* may not be unique

Select an existing License Host from the list or enter a new one

Existing License Hosts: --Select an existing License Host--

Server Host ID \*

Server Name / IP Address \*

Port

Host Description

For high-availability environments, license files can run in a redundant 3 - license server cluster. If you want to use this option, enter both redundant servers below as well as the primary server above, including port numbers. Redundant license servers are not required. (Optional)

Red. Server Host ID

Server Name / IP Address

Port

Host Description

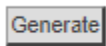
Red. Server Host ID

Server Name / IP Address

Port

Host Description

16. Click on Generate



17. Use the same "flexlm" carpet to save the license.dat file in the server.

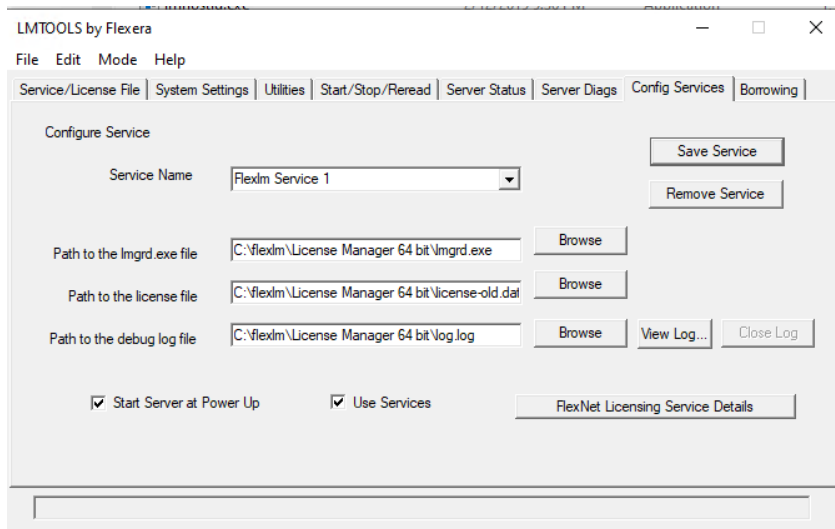
18. In the flexlm folder create a file called log.log

19. On the server-side Open the lmtools.exe and go to the **Config Services** tab

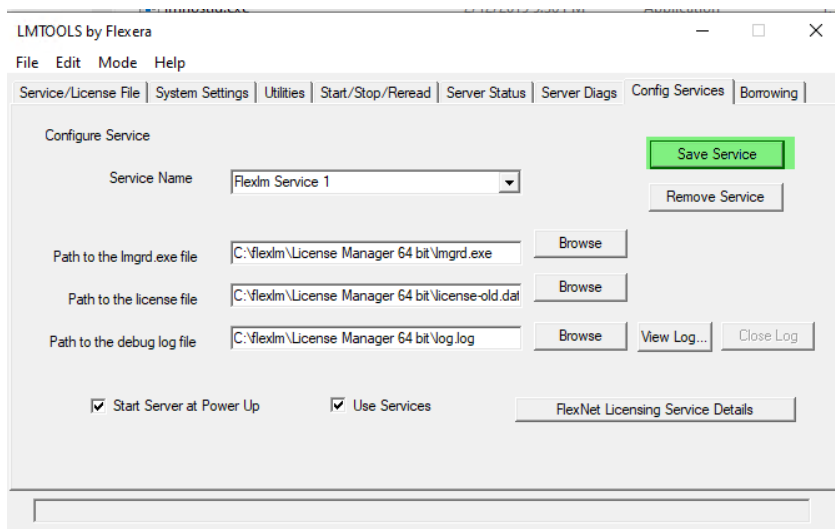
19.1 click on the browse button from the Path to the lmgrd.exe and select the file

19.2 click on the browse button from the Path to the License File and select the file

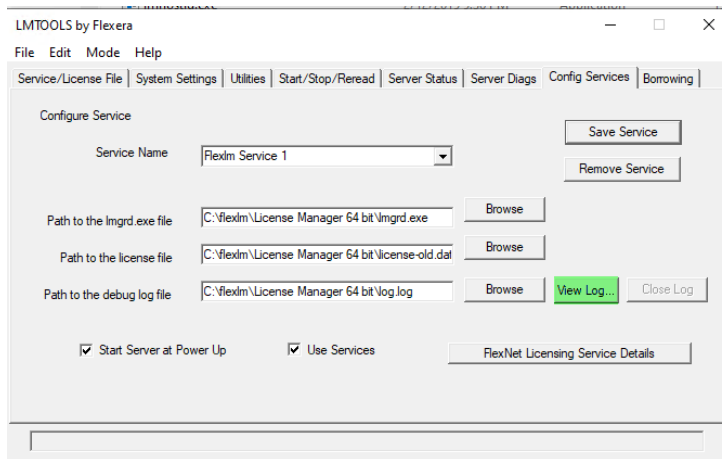
19.3 click on the browse button from the Path to the Log file and select the log file



20. Click on **Save Service**

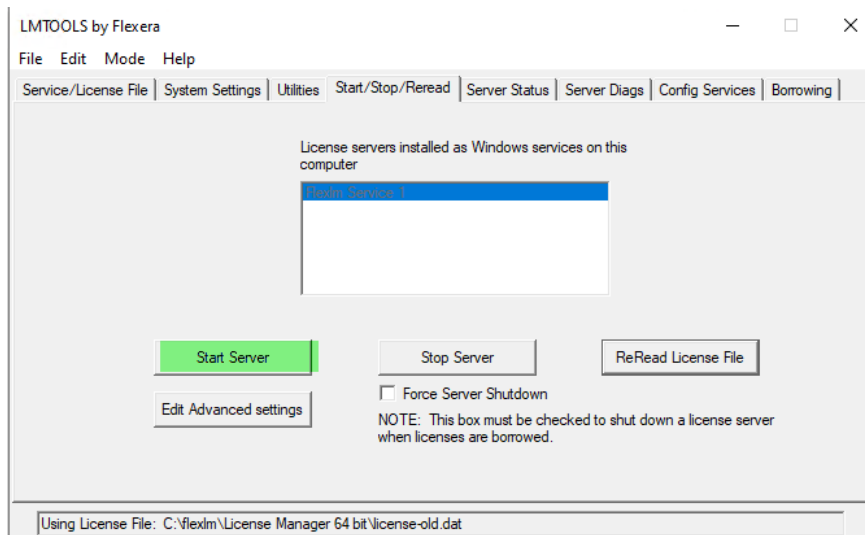


21. Click on the **View Log** button



22. Click on the **Start/Stop/Reread** tab

21. Click on **Start Server**



22. After the server has been started please review you log data from the popup window or the log file previously created

23. The log file will let you know if the server has been started successfully and all the features that you have available to use.

24. Header of the License File needs to be placed on the local host computer in the correct location.

