

測試報告 Test Report

號碼(No.) : CE/2019/84072 日期(Date) : 2019/09/03

頁數(Page) : 1 of 9

金利精密工業股份有限公司

KENLY PRECISION INDUSTRIAL CO., LTD.

桃園市平鎮區平鎮工業區工業五路4號

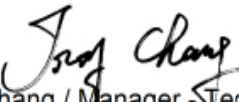
NO. 4, INDUSTRIAL 5TH RD, PING CHENG INDUSTRIAL DIST., PING CHENG DIST., TAOYUAN CITY, TAIWAN R.O.C. P.O. 324

以下測試樣品係由申請廠商所提供及確認 (The following sample(s) was/were submitted and identified by/on behalf of the applicant as):

BASIC INFORMATION	
Type of Product	C1100+化學研磨
Supplier Company Name	KENLY PRECISION INDUSTRIAL CO., LTD.
Address	NO 4, INDUSTRIAL 5TH RD, PING CHENG INDUSTRIAL DIST, PING CHENG CITY TAOYUAN HSIEN, TAIWAN R.O.C P.O. 324
Tel / Fax / Email	TEL : (03) 469-6175 #239 FAX : (03) 419-4403 Email : chiu@kenly.com.tw
Contact Person	chiu
Others	A-24
PRODUCT INFORMATION	
Product/component Sample description	Heat Sink
Supplier P/N	HEAT SINK
TEST INFORMATION	
Sample preparation	CUTTING
Test Method	RoHS: IEC 62321, Halogen: BS EN 14582
MDL	Cd, Pb, Hg: 2 mg/kg, PBBs/PBDEs: 5 mg/kg, Halogen: 50 mg/kg
Name of Analyzer	Cd, Pb, Hg, Cr(VI): Rita Chen, PBBs/PBDEs: Yaling Tu, Halogen: Rita Chen

送樣廠商(Sample Submitted By) : 金利精密工業股份有限公司 (KENLY PRECISION INDUSTRIAL CO., LTD.)
 收件日期(Sample Receiving Date) : 2019/08/26
 測試期間(Testing Period) : 2019/08/26 to 2019/09/02

=====
 測試結果(Test Results) : 請參閱下一頁 (Please refer to following pages).


 Troy Chang / Manager - Tech
 Signed for and behalf of
 SGS TAIWAN LTD.
 Chemical Laboratory - Taipei



測試報告 Test Report

號碼(No.) : CE/2019/84072 日期(Date) : 2019/09/03

頁數(Page) : 2 of 9

金利精密工業股份有限公司

KENLY PRECISION INDUSTRIAL CO., LTD.

桃園市平鎮區平鎮工業區工業五路4號

NO. 4, INDUSTRIAL 5TH RD, PING CHENG INDUSTRIAL DIST., PING CHENG DIST., TAOYUAN CITY, TAIWAN R.O.C. P.O. 324

結論(Conclusion)

根據客戶所提供的樣品，其鎘、鉛、汞、六價鉻、多溴聯苯、多溴聯苯醚，DBP, BBP, DEHP, DIBP的測試結果符合RoHS 2011/65/EU Annex II暨其修訂指令(EU) 2015/863之限值要求。(Based on the performed tests on submitted sample(s), the test results of Cadmium, Lead, Mercury, Cr(VI), PBBs, PBDEs, DBP, BBP, DEHP, DIBP comply with the limits as set by RoHS Directive (EU) 2015/863 amending Annex II to Directive 2011/65/EU.)

測試結果(Test Results)

測試部位(PART NAME)No.1 : 銅色金屬 (COPPER COLORED METAL)

測試項目 (Test Items)	單位 (Unit)	測試方法 (Method)	方法偵測 極限值 (MDL)	結果 (Result)	限值 (Limit)
			No. 1	No. 1	
鎘 / Cadmium (Cd)	mg/kg	參考IEC 62321-5 (2013)，以感應耦合電漿原子發射光譜儀檢測。 / With reference to IEC 62321-5 (2013) and performed by ICP-AES.	2	n. d.	100
鉛 / Lead (Pb)	mg/kg		2	n. d.	1000
汞 / Mercury (Hg)	mg/kg		2	n. d.	1000
六價鉻 / Hexavalent Chromium Cr(VI)(#2)	µg/cm ²	參考IEC 62321-7-1 (2015)，以UV-VIS檢測。 / With reference to IEC 62321-7-1 (2015) and performed by UV-VIS.	0.10	n. d.	-
多溴聯苯總和 / Sum of PBBs	mg/kg	參考IEC 62321-6 (2015)，以氣相層析/質譜儀檢測。 / With reference to IEC 62321-6 (2015) and performed by GC/MS.	-	n. d.	1000
一溴聯苯 / Monobromobiphenyl	mg/kg		5	n. d.	-
二溴聯苯 / Dibromobiphenyl	mg/kg		5	n. d.	-
三溴聯苯 / Tribromobiphenyl	mg/kg		5	n. d.	-
四溴聯苯 / Tetrabromobiphenyl	mg/kg		5	n. d.	-
五溴聯苯 / Pentabromobiphenyl	mg/kg		5	n. d.	-
六溴聯苯 / Hexabromobiphenyl	mg/kg		5	n. d.	-
七溴聯苯 / Heptabromobiphenyl	mg/kg		5	n. d.	-
八溴聯苯 / Octabromobiphenyl	mg/kg		5	n. d.	-
九溴聯苯 / Nonabromobiphenyl	mg/kg		5	n. d.	-
十溴聯苯 / Decabromobiphenyl	mg/kg	5	n. d.	-	

This document is issued by the Company subject to its General Conditions of Service printed overleaf, available on request or accessible at <http://www.sgs.com/en/Terms-and-Conditions.aspx> and, for electronic format documents, subject to Terms and Conditions for Electronic Documents at <https://www.sgs.com/en/terms-and-conditions/terms-e-document>. Attention is drawn to the limitation of liability, indemnification and jurisdiction issues defined therein. Any holder of this document is advised that information contained herein reflects the Company's findings at the time of its intervention only and within the limits of client's instruction, if any. The Company's sole responsibility is to its Client and this document does not exonerate parties to a transaction from exercising all their rights and obligations under the transaction documents. This document cannot be reproduced, except in full, without prior written approval of the Company. Any unauthorized alteration, forgery or falsification of the content or appearance of this document is unlawful and offenders may be prosecuted to the fullest extent of the law. Unless otherwise stated the results shown in this test report refer only to the sample(s) tested.

測試報告 Test Report

號碼(No.) : CE/2019/84072 日期(Date) : 2019/09/03

頁數(Page) : 3 of 9

金利精密工業股份有限公司

KENLY PRECISION INDUSTRIAL CO., LTD.

桃園市平鎮區平鎮工業區工業五路4號

NO. 4, INDUSTRIAL 5TH RD, PING CHENG INDUSTRIAL DIST., PING CHENG DIST., TAOYUAN CITY, TAIWAN R.O.C. P.O. 324

測試項目 (Test Items)	單位 (Unit)	測試方法 (Method)	方法偵測 極限值 (MDL)	結果 (Result)	限值 (Limit)
				No. 1	
多溴聯苯醚總和 / Sum of PBDEs	mg/kg	參考IEC 62321-6 (2015), 以氣相層析/ 質譜儀檢測. / With reference to IEC 62321-6 (2015) and performed by GC/MS.	-	n. d.	1000
一溴聯苯醚 / Monobromodiphenyl ether	mg/kg		5	n. d.	-
二溴聯苯醚 / Dibromodiphenyl ether	mg/kg		5	n. d.	-
三溴聯苯醚 / Tribromodiphenyl ether	mg/kg		5	n. d.	-
四溴聯苯醚 / Tetrabromodiphenyl ether	mg/kg		5	n. d.	-
五溴聯苯醚 / Pentabromodiphenyl ether	mg/kg		5	n. d.	-
六溴聯苯醚 / Hexabromodiphenyl ether	mg/kg		5	n. d.	-
七溴聯苯醚 / Heptabromodiphenyl ether	mg/kg		5	n. d.	-
八溴聯苯醚 / Octabromodiphenyl ether	mg/kg		5	n. d.	-
九溴聯苯醚 / Nonabromodiphenyl ether	mg/kg		5	n. d.	-
十溴聯苯醚 / Decabromodiphenyl ether	mg/kg	5	n. d.	-	
鄰苯二甲酸二丁酯 / DBP (Dibutyl phthalate) (CAS No. : 84-74-2)	mg/kg	參考IEC 62321-8 (2017), 以氣相層析/ 質譜儀檢測. / With reference to IEC 62321-8 (2017). Analysis was performed by GC/MS.	50	n. d.	1000
鄰苯二甲酸丁苯甲酯 / BBP (Butyl Benzyl phthalate) (CAS No. : 85-68-7)	mg/kg		50	n. d.	1000
鄰苯二甲酸二(2-乙基己基)酯 / DEHP (Di-(2-ethylhexyl) phthalate) (CAS No. : 117-81-7)	mg/kg		50	n. d.	1000
鄰苯二甲酸二異丁酯 / DIBP (Di-isobutyl phthalate) (CAS No. : 84-69-5)	mg/kg		50	n. d.	1000
鄰苯二甲酸二異壬酯 / DINP (Di-isononyl phthalate) (CAS No. : 28553-12-0; 68515-48-0)	mg/kg		50	n. d.	-

This document is issued by the Company subject to its General Conditions of Service printed overleaf, available on request or accessible at <http://www.sgs.com/en/Terms-and-Conditions.aspx> and, for electronic format documents, subject to Terms and Conditions for Electronic Documents at <https://www.sgs.com/en/terms-and-conditions/terms-e-document>. Attention is drawn to the limitation of liability, indemnification and jurisdiction issues defined therein. Any holder of this document is advised that information contained herein reflects the Company's findings at the time of its intervention only and within the limits of client's instruction, if any. The Company's sole responsibility is to its Client and this document does not exonerate parties to a transaction from exercising all their rights and obligations under the transaction documents. This document cannot be reproduced, except in full, without prior written approval of the Company. Any unauthorized alteration, forgery or falsification of the content or appearance of this document is unlawful and offenders may be prosecuted to the fullest extent of the law. Unless otherwise stated the results shown in this test report refer only to the sample(s) tested.

測試報告

Test Report

號碼(No.) : CE/2019/84072 日期(Date) : 2019/09/03

頁數(Page) : 4 of 9

金利精密工業股份有限公司

KENLY PRECISION INDUSTRIAL CO., LTD.

桃園市平鎮區平鎮工業區工業五路4號

NO. 4, INDUSTRIAL 5TH RD, PING CHENG INDUSTRIAL DIST., PING CHENG DIST., TAOYUAN CITY, TAIWAN R.O.C. P.O. 324

測試項目 (Test Items)	單位 (Unit)	測試方法 (Method)	方法偵測 極限值 (MDL)	結果 (Result)	限值 (Limit)
				No. 1	
鹵素 / Halogen					
鹵素 (氟) / Halogen-Fluorine (F) (CAS No.: 14762-94-8)	mg/kg	參考BS EN 14582 (2016), 以離子層析儀分析. / With reference to BS EN 14582 (2016). Analysis was performed by IC.	50	n. d.	-
鹵素 (氯) / Halogen-Chlorine (Cl) (CAS No.: 22537-15-1)	mg/kg		50	n. d.	-
鹵素 (溴) / Halogen-Bromine (Br) (CAS No.: 10097-32-2)	mg/kg		50	n. d.	-
鹵素 (碘) / Halogen-Iodine (I) (CAS No.: 14362-44-8)	mg/kg		50	n. d.	-

備註(Note) :

1. mg/kg = ppm ; 0.1wt% = 1000ppm
2. n. d. = Not Detected (未檢出)
3. MDL = Method Detection Limit (方法偵測極限值)
4. "-" = Not Regulated (無規格值)
5. (#2) =
 - a. 當六價鉻結果大於0.13 $\mu\text{g}/\text{cm}^2$, 表示樣品表層含有六價鉻. / The sample is positive for Cr(VI) if the Cr(VI) concentration is greater than 0.13 $\mu\text{g}/\text{cm}^2$. The sample coating is considered to contain Cr(VI).
 - b. 當六價鉻結果為n. d. (濃度小於0.10 $\mu\text{g}/\text{cm}^2$), 表示表層不含六價鉻. / The sample is negative for Cr(VI) if Cr(VI) is n. d. (concentration less than 0.10 $\mu\text{g}/\text{cm}^2$). The coating is considered a non-Cr(VI) based coating
 - c. 當六價鉻結果介於 0.10 及 0.13 $\mu\text{g}/\text{cm}^2$ 時, 無法確定塗層是否含有六價鉻. / The result between 0.10 $\mu\text{g}/\text{cm}^2$ and 0.13 $\mu\text{g}/\text{cm}^2$ is considered to be inconclusive - unavoidable coating variations may influence the determination.

測試報告 Test Report

號碼(No.) : CE/2019/84072 日期(Date) : 2019/09/03

頁數(Page) : 5 of 9

金利精密工業股份有限公司

KENLY PRECISION INDUSTRIAL CO., LTD.

桃園市平鎮區平鎮工業區工業五路4號

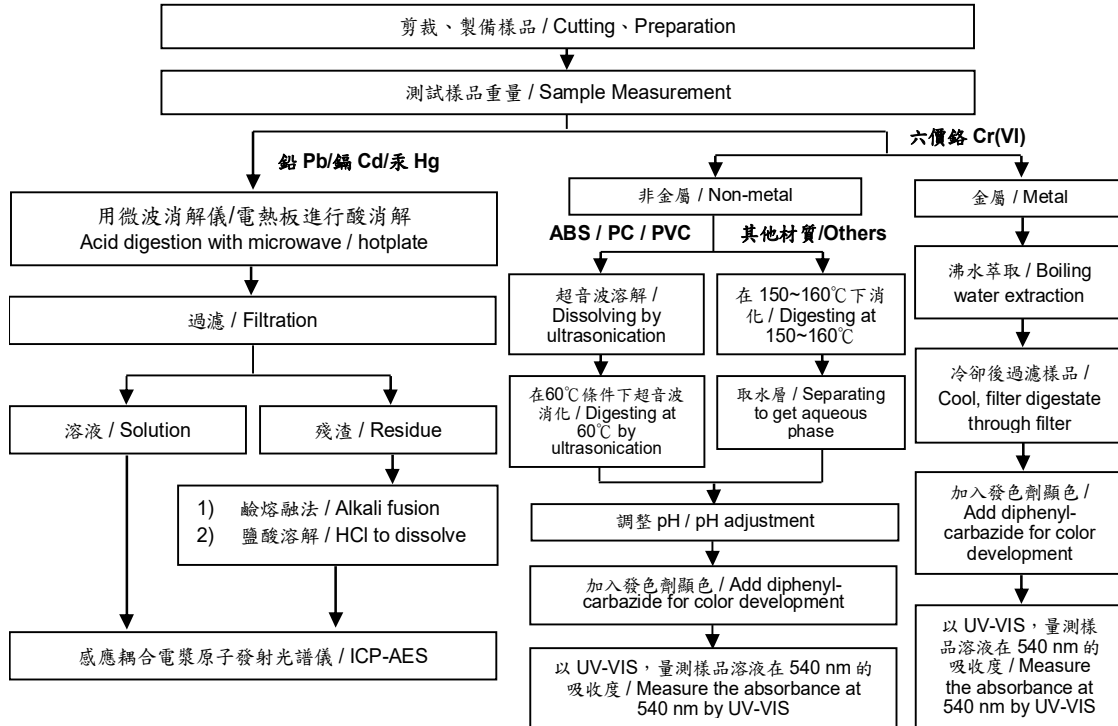
NO. 4, INDUSTRIAL 5TH RD, PING CHENG INDUSTRIAL DIST., PING CHENG DIST., TAOYUAN CITY, TAIWAN R.O.C. P.O. 324

重金屬流程圖 / Analytical flow chart of Heavy Metal

根據以下的流程圖之條件，樣品已完全溶解。(六價鉻測試方法除外)

These samples were dissolved totally by pre-conditioning method according to below flow chart. (Cr⁶⁺ test method excluded)

- 測試人員：陳思臻 / Technician : Rita Chen
- 測試負責人：張啟興 / Supervisor: Troy Chang



測試報告 Test Report

號碼(No.) : CE/2019/84072 日期(Date) : 2019/09/03

頁數(Page) : 6 of 9

金利精密工業股份有限公司

KENLY PRECISION INDUSTRIAL CO., LTD.

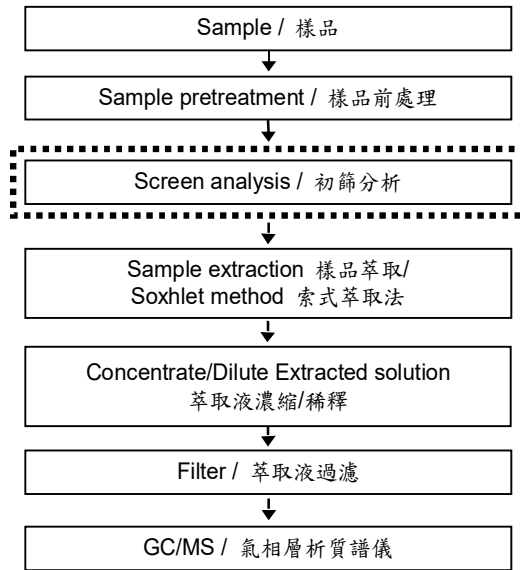
桃園市平鎮區平鎮工業區工業五路4號

NO. 4, INDUSTRIAL 5TH RD, PING CHENG INDUSTRIAL DIST., PING CHENG DIST., TAOYUAN CITY, TAIWAN R.O.C. P.O. 324

多溴聯苯/多溴聯苯醚分析流程圖 / Analytical flow chart - PBB/PBDE

- 測試人員：涂雅芬 / Technician: Yaling Tu
- 測試負責人：張啟興 / Supervisor: Troy Chang

初次測試程序 / First testing process —————>
 選擇性篩檢程序 / Optional screen process>
 確認程序 / Confirmation process - - ->



測試報告 Test Report

號碼(No.) : CE/2019/84072 日期(Date) : 2019/09/03

頁數(Page) : 7 of 9

金利精密工業股份有限公司

KENLY PRECISION INDUSTRIAL CO., LTD.

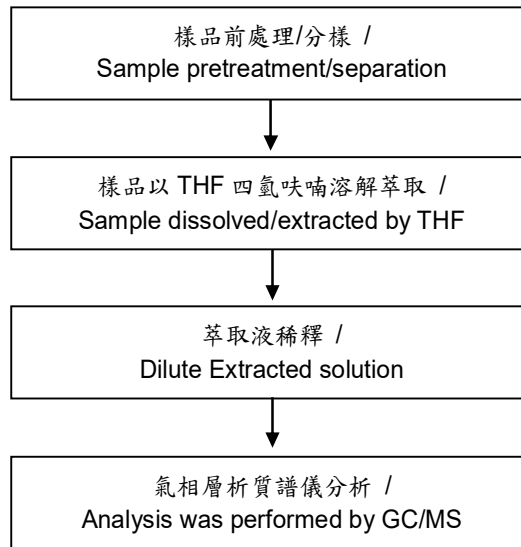
桃園市平鎮區平鎮工業區工業五路4號

NO. 4, INDUSTRIAL 5TH RD, PING CHENG INDUSTRIAL DIST., PING CHENG DIST., TAOYUAN CITY, TAIWAN R.O.C. P.O. 324

可塑劑分析流程圖 / Analytical flow chart - Phthalate

- 測試人員：涂雅苓 / Technician: Yaling Tu
- 測試負責人：張啟興 / Supervisor : Troy Chang

【測試方法/Test method: IEC 62321-8】



測試報告 Test Report

號碼(No.) : CE/2019/84072 日期(Date) : 2019/09/03

頁數(Page) : 8 of 9

金利精密工業股份有限公司

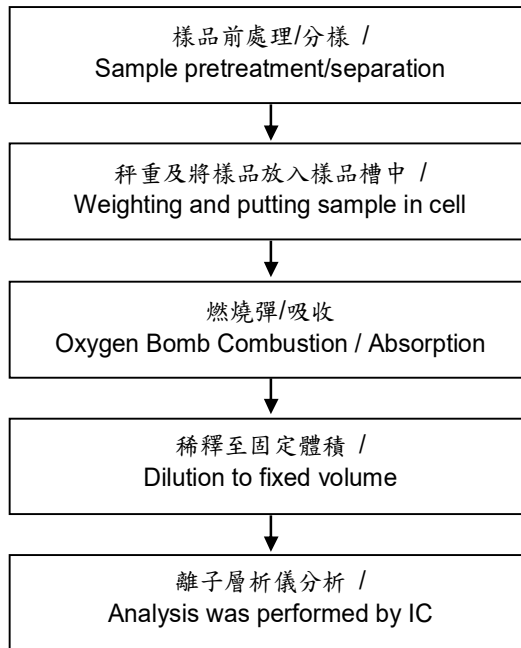
KENLY PRECISION INDUSTRIAL CO., LTD.

桃園市平鎮區平鎮工業區工業五路4號

NO. 4, INDUSTRIAL 5TH RD, PING CHENG INDUSTRIAL DIST., PING CHENG DIST., TAOYUAN CITY, TAIWAN R.O.C. P.O. 324

鹵素分析流程圖 / Analytical flow chart - Halogen

- 測試人員：陳恩臻 / Technician: Rita Chen
- 測試負責人：張啟興 / Supervisor: Troy Chang



測試報告 Test Report

號碼(No.) : CE/2019/84072 日期(Date) : 2019/09/03

頁數(Page) : 9 of 9

金利精密工業股份有限公司

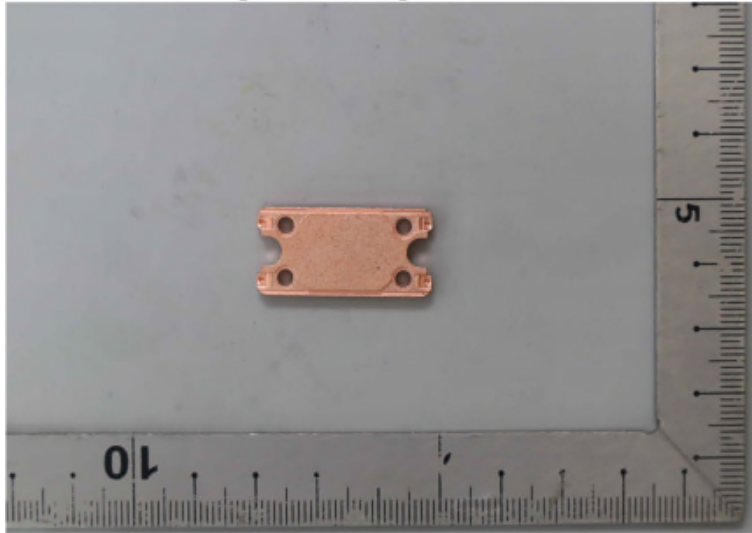
KENLY PRECISION INDUSTRIAL CO., LTD.

桃園市平鎮區平鎮工業區工業五路4號

NO. 4, INDUSTRIAL 5TH RD, PING CHENG INDUSTRIAL DIST., PING CHENG DIST., TAOYUAN CITY, TAIWAN R.O.C. P.O. 324

* 照片中如有箭頭標示，則表示為實際檢測之樣品/部位。 *
(The tested sample / part is marked by an arrow if it's shown on the photo.)

CE/2019/84072



** 報告結尾 (End of Report) **