



Test Report

No.: ETR21A02804

Date: 18-Oct-2021

Page: 1 of 7

TAIYO INK MFG. CO., LTD.

900, HIRASAWA, RANZAN-MACHI, HIKI-GUN, SAITAMA 355-0215 JAPAN

The following sample(s) was/were submitted and identified by/on behalf of the applicant as:

Sample Submitted By : TAIYO INK MFG. CO., LTD.
 Sample Name : PSR-4000 AUS308 /CA-40 AUS308 (UL:PSR-4000EY /CA-40ER)
 Style/Item No. : INK
 Color : GREEN

=====
 Sample Receiving Date : 12-Oct-2021
 Testing Period : 12-Oct-2021 to 18-Oct-2021

Test Requested : As specified by client, with reference to RoHS 2011/65/EU Annex II and amending Directive (EU) 2015/863 to determine Cadmium, Lead, Mercury, Cr(VI), PBBs, PBDEs, DBP, BBP, DEHP, DIBP contents in the submitted sample(s).

Test Results : Please refer to following pages.

Conclusion : Based on the performed tests on submitted sample(s), the test results of Cadmium, Lead, Mercury, Cr(VI), PBBs, PBDEs, DBP, BBP, DEHP, DIBP comply with the limits as set by RoHS Directive (EU) 2015/863 amending Annex II to Directive 2011/65/EU.

Troy Chang
 Troy Chang, Manager in Charge
 Signed for and on behalf of
 SGS TAIWAN LTD.
 Chemical Laboratory - Taipei




PIN CODE: 97C4560B

This document is issued by the Company subject to its General Conditions of Service printed overleaf, available on request or accessible at <https://www.sgs.com.tw/terms-of-service> and, for electronic format documents, subject to Terms and Conditions for Electronic Documents at <https://www.sgs.com.tw/terms-of-service>. Attention is drawn to the limitation of liability, indemnification and jurisdiction issues defined therein. Any holder of this document is advised that information contained hereon reflects the Company's findings at the time of its intervention only and within the limits of client's instruction, if any. The Company's sole responsibility is to its Client and this document does not exonerate parties to a transaction from exercising all their rights and obligations under the transaction documents. This document cannot be reproduced, except in full, without prior written approval of the Company. Any unauthorized alteration, forgery or falsification of the content or appearance of this document is unlawful and offenders may be prosecuted to the fullest extent of the law. Unless otherwise stated the results shown in this test report refer only to the sample(s) tested.

Test Report

No.: ETR21A02804

Date: 18-Oct-2021

Page: 2 of 7

TAIYO INK MFG. CO., LTD.

900, HIRASAWA, RANZAN-MACHI, HIKI-GUN, SAITAMA 355-0215 JAPAN

Test Part Description

No.1 : GREEN INK

Test Result(s)

| Test Item(s) | Method | Unit | MDL | Result | Limit |
|--|---|-------|-----|--------|-------|
| | | | | No.1 | |
| Cadmium (Cd) (CAS No.: 7440-43-9) | With reference to IEC 62321-5: 2013, analysis was performed by ICP-OES. | mg/kg | 2 | n.d. | 100 |
| Lead (Pb) (CAS No.: 7439-92-1) | | mg/kg | 2 | n.d. | 1000 |
| Mercury (Hg) (CAS No.: 7439-97-6) | With reference to IEC 62321-4: 2013+ AMD1: 2017, analysis was performed by ICP-OES. | mg/kg | 2 | n.d. | 1000 |
| Hexavalent Chromium Cr(VI) (CAS No.: 18540-29-9) | With reference to IEC 62321-7-2: 2017, analysis was performed by UV-VIS. | mg/kg | 8 | n.d. | 1000 |
| Monobromobiphenyl | With reference to IEC 62321-6: 2015, analysis was performed by GC/MS. | mg/kg | 5 | n.d. | - |
| Dibromobiphenyl | | mg/kg | 5 | n.d. | - |
| Tribromobiphenyl | | mg/kg | 5 | n.d. | - |
| Tetrabromobiphenyl | | mg/kg | 5 | n.d. | - |
| Pentabromobiphenyl | | mg/kg | 5 | n.d. | - |
| Hexabromobiphenyl | | mg/kg | 5 | n.d. | - |
| Heptabromobiphenyl | | mg/kg | 5 | n.d. | - |
| Octabromobiphenyl | | mg/kg | 5 | n.d. | - |
| Nonabromobiphenyl | | mg/kg | 5 | n.d. | - |
| Decabromobiphenyl | | mg/kg | 5 | n.d. | - |
| Sum of PBBs | | mg/kg | - | n.d. | 1000 |
| Monobromodiphenyl ether | With reference to IEC 62321-6: 2015, analysis was performed by GC/MS. | mg/kg | 5 | n.d. | - |
| Dibromodiphenyl ether | | mg/kg | 5 | n.d. | - |
| Tribromodiphenyl ether | | mg/kg | 5 | n.d. | - |
| Tetrabromodiphenyl ether | | mg/kg | 5 | n.d. | - |
| Pentabromodiphenyl ether | | mg/kg | 5 | n.d. | - |
| Hexabromodiphenyl ether | | mg/kg | 5 | n.d. | - |
| Heptabromodiphenyl ether | | mg/kg | 5 | n.d. | - |
| Octabromodiphenyl ether | | mg/kg | 5 | n.d. | - |
| Nonabromodiphenyl ether | | mg/kg | 5 | n.d. | - |
| Decabromodiphenyl ether | | mg/kg | 5 | n.d. | - |
| Sum of PBDEs | | mg/kg | - | n.d. | 1000 |

This document is issued by the Company subject to its General Conditions of Service printed overleaf, available on request or accessible at <https://www.sgs.com.tw/terms-of-service> and, for electronic format documents, subject to Terms and Conditions for Electronic Documents at <https://www.sgs.com.tw/terms-of-service>. Attention is drawn to the limitation of liability, indemnification and jurisdiction issues defined therein. Any holder of this document is advised that information contained hereon reflects the Company's findings at the time of its intervention only and within the limits of client's instruction, if any. The Company's sole responsibility is to its Client and this document does not exonerate parties to a transaction from exercising all their rights and obligations under the transaction documents. This document cannot be reproduced, except in full, without prior written approval of the Company. Any unauthorized alteration, forgery or falsification of the content or appearance of this document is unlawful and offenders may be prosecuted to the fullest extent of the law. Unless otherwise stated the results shown in this test report refer only to the sample(s) tested.

Test Report

No.: ETR21A02804

Date: 18-Oct-2021

Page: 3 of 7

TAIYO INK MFG. CO., LTD.

900, HIRASAWA, RANZAN-MACHI, HIKI-GUN, SAITAMA 355-0215 JAPAN

| Test Item(s) | Method | Unit | MDL | Result | Limit |
|--|---|-------|-----|--------|-------|
| | | | | No.1 | |
| Butyl benzyl phthalate (BBP) (CAS No.: 85-68-7) | With reference to IEC 62321-8: 2017, analysis was performed by GC/MS. | mg/kg | 50 | n.d. | 1000 |
| Dibutyl phthalate (DBP) (CAS No.: 84-74-2) | | mg/kg | 50 | n.d. | 1000 |
| Diisobutyl phthalate (DIBP) (CAS No.: 84-69-5) | | mg/kg | 50 | n.d. | 1000 |
| Di-(2-ethylhexyl) phthalate (DEHP) (CAS No.: 117-81-7) | | mg/kg | 50 | n.d. | 1000 |

Note :

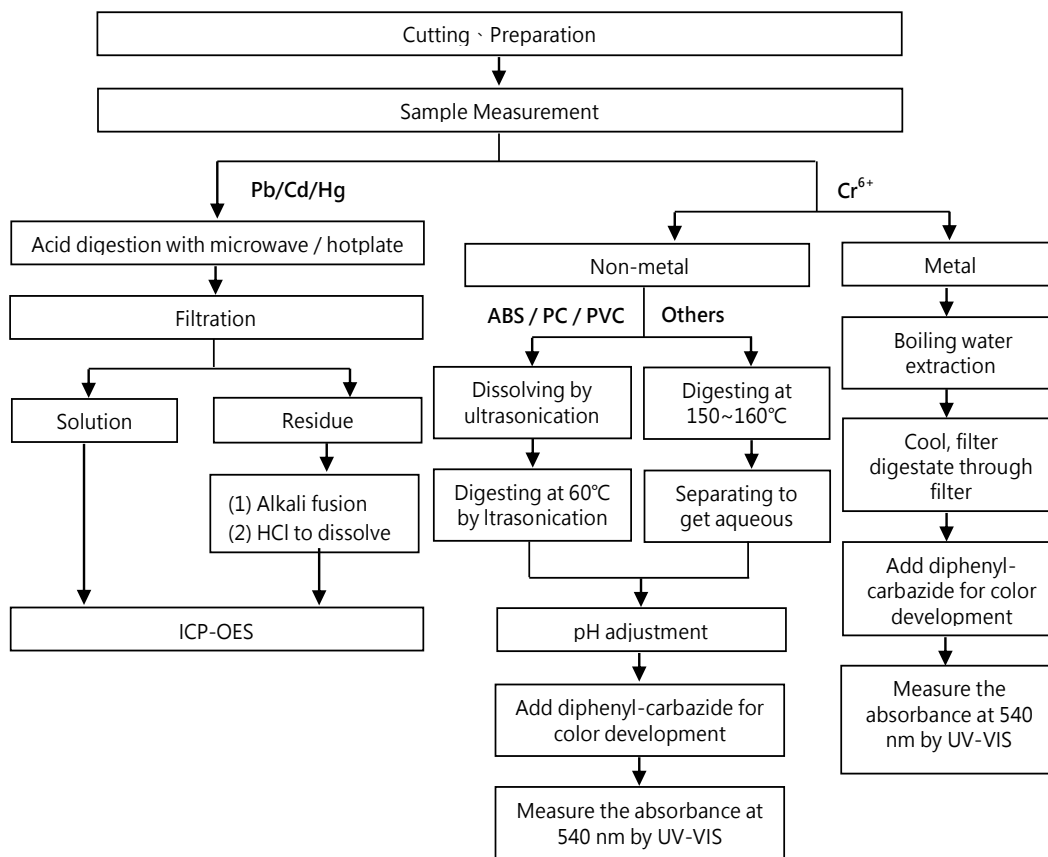
1. mg/kg = ppm ; 0.1wt% = 1000ppm
2. MDL = Method Detection Limit
3. n.d. = Not Detected (Less than MDL)
4. "-" = Not Regulated
5. The statement of compliance conformity is based on comparison of testing results and limits.

This document is issued by the Company subject to its General Conditions of Service printed overleaf, available on request or accessible at <https://www.sgs.com.tw/terms-of-service> and, for electronic format documents, subject to Terms and Conditions for Electronic Documents at <https://www.sgs.com.tw/terms-of-service>. Attention is drawn to the limitation of liability, indemnification and jurisdiction issues defined therein. Any holder of this document is advised that information contained hereon reflects the Company's findings at the time of its intervention only and within the limits of client's instruction, if any. The Company's sole responsibility is to its Client and this document does not exonerate parties to a transaction from exercising all their rights and obligations under the transaction documents. This document cannot be reproduced, except in full, without prior written approval of the Company. Any unauthorized alteration, forgery or falsification of the content or appearance of this document is unlawful and offenders may be prosecuted to the fullest extent of the law. Unless otherwise stated the results shown in this test report refer only to the sample(s) tested.

Analytical flow chart of Heavy Metal

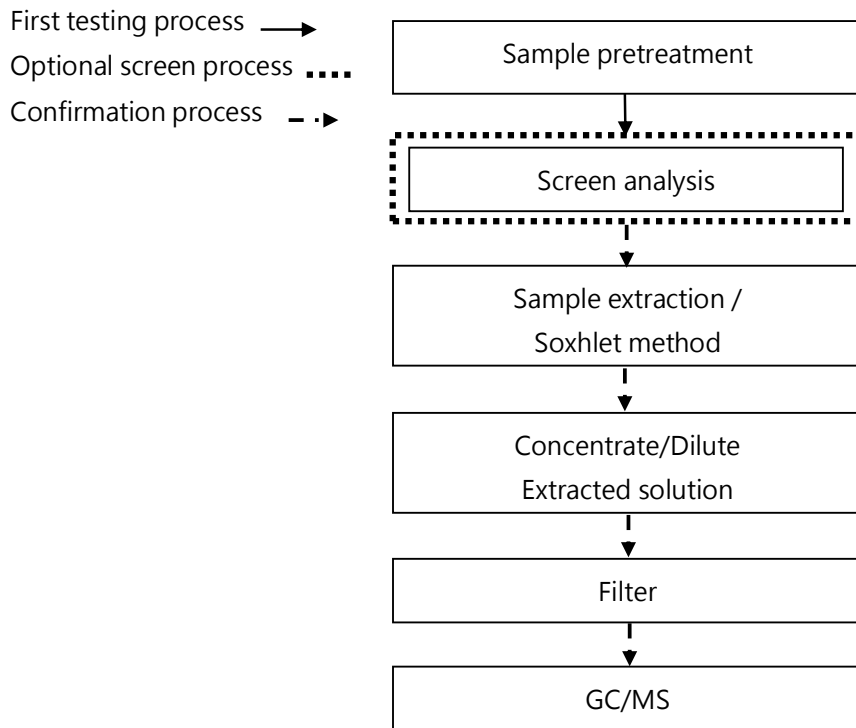
These samples were dissolved totally by pre-conditioning method according to below flow chart.

(Cr⁶⁺ test method excluded)



This document is issued by the Company subject to its General Conditions of Service printed overleaf, available on request or accessible at <https://www.sgs.com.tw/terms-of-service> and, for electronic format documents, subject to Terms and Conditions for Electronic Documents at <https://www.sgs.com.tw/terms-of-service>. Attention is drawn to the limitation of liability, indemnification and jurisdiction issues defined therein. Any holder of this document is advised that information contained hereon reflects the Company's findings at the time of its intervention only and within the limits of client's instruction, if any. The Company's sole responsibility is to its Client and this document does not exonerate parties to a transaction from exercising all their rights and obligations under the transaction documents. This document cannot be reproduced, except in full, without prior written approval of the Company. Any unauthorized alteration, forgery or falsification of the content or appearance of this document is unlawful and offenders may be prosecuted to the fullest extent of the law. Unless otherwise stated the results shown in this test report refer only to the sample(s) tested.

Analytical flow chart – PBBs / PBDEs



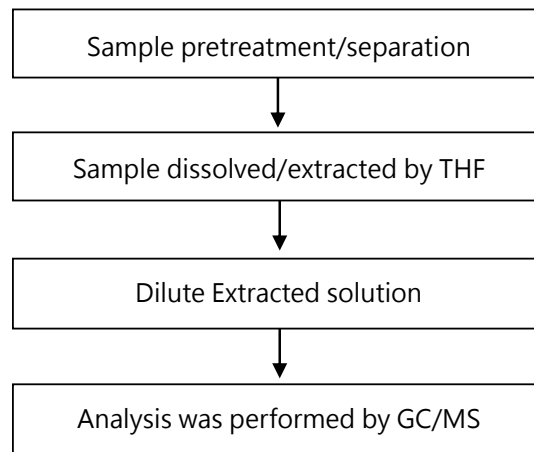
This document is issued by the Company subject to its General Conditions of Service printed overleaf, available on request or accessible at <https://www.sgs.com.tw/terms-of-service> and, for electronic format documents, subject to Terms and Conditions for Electronic Documents at <https://www.sgs.com.tw/terms-of-service>. Attention is drawn to the limitation of liability, indemnification and jurisdiction issues defined therein. Any holder of this document is advised that information contained hereon reflects the Company's findings at the time of its intervention only and within the limits of client's instruction, if any. The Company's sole responsibility is to its Client and this document does not exonerate parties to a transaction from exercising all their rights and obligations under the transaction documents. This document cannot be reproduced, except in full, without prior written approval of the Company. Any unauthorized alteration, forgery or falsification of the content or appearance of this document is unlawful and offenders may be prosecuted to the fullest extent of the law. Unless otherwise stated the results shown in this test report refer only to the sample(s) tested.

TAIYO INK MFG. CO., LTD.

900, HIRASAWA, RANZAN-MACHI, HIKI-GUN, SAITAMA 355-0215 JAPAN

Analytical flow chart - Phthalate

【Test method: IEC 62321-8】



This document is issued by the Company subject to its General Conditions of Service printed overleaf, available on request or accessible at <https://www.sgs.com.tw/terms-of-service> and, for electronic format documents, subject to Terms and Conditions for Electronic Documents at <https://www.sgs.com.tw/terms-of-service>. Attention is drawn to the limitation of liability, indemnification and jurisdiction issues defined therein. Any holder of this document is advised that information contained hereon reflects the Company's findings at the time of its intervention only and within the limits of client's instruction, if any. The Company's sole responsibility is to its Client and this document does not exonerate parties to a transaction from exercising all their rights and obligations under the transaction documents. This document cannot be reproduced, except in full, without prior written approval of the Company. Any unauthorized alteration, forgery or falsification of the content or appearance of this document is unlawful and offenders may be prosecuted to the fullest extent of the law. Unless otherwise stated the results shown in this test report refer only to the sample(s) tested.

Test Report

No.: ETR21A02804

Date: 18-Oct-2021

Page: 7 of 7

TAIYO INK MFG. CO., LTD.

900, HIRASAWA, RANZAN-MACHI, HIKI-GUN, SAITAMA 355-0215 JAPAN

* The tested sample / part is marked by an arrow if it's shown on the photo. *

ETR21A02804



** End of Report **

This document is issued by the Company subject to its General Conditions of Service printed overleaf, available on request or accessible at <https://www.sgs.com.tw/terms-of-service> and, for electronic format documents, subject to Terms and Conditions for Electronic Documents at <https://www.sgs.com.tw/terms-of-service>. Attention is drawn to the limitation of liability, indemnification and jurisdiction issues defined therein. Any holder of this document is advised that information contained hereon reflects the Company's findings at the time of its intervention only and within the limits of client's instruction, if any. The Company's sole responsibility is to its Client and this document does not exonerate parties to a transaction from exercising all their rights and obligations under the transaction documents. This document cannot be reproduced, except in full, without prior written approval of the Company. Any unauthorized alteration, forgery or falsification of the content or appearance of this document is unlawful and offenders may be prosecuted to the fullest extent of the law. Unless otherwise stated the results shown in this test report refer only to the sample(s) tested.