

Test Report

No. : CE/2020/45308

Date : 2020/05/04

Page : 1 of 12

HITACHI CHEMICAL ELECTRONIC MATERIALS (HONG KONG) LIMITED
NO.6-8 DAI WANG STREET, TAI PO INDUSTRIAL ESTATE, TAI PO, NEW TERRITORIES, HONG KONG

The following samples was/were submitted and identified by/on behalf of the applicant as :

Sample Submitted By : HITACHI CHEMICAL ELECTRONIC MATERIALS (HONG KONG) LIMITED
Sample Description : COPPER FOIL B
Sample Receiving Date : 2020/04/27
Testing Period : 2020/04/27 to 2020/05/04

Test Requested

- (1) As specified by client, with reference to RoHS 2011/65/EU Annex II and amending Directive (EU) 2015/863 to determine Cadmium, Lead, Mercury, Cr(VI), PBBs, PBDEs, DBP, BBP, DEHP, DIBP contents in the submitted sample(s).
- (2) Please refer to next pages for the other item(s).

Test Result(s) : Please refer to following pages.

Conclusion : (1) Based on the performed tests on submitted sample(s), the test results of Cadmium, Lead, Mercury, Cr(VI), PBBs, PBDEs, DBP, BBP, DEHP, DIBP comply with the limits as set by RoHS Directive (EU) 2015/863 amending Annex II to Directive 2011/65/EU.


Troy Chang / Manager - Tech
Signed for and behalf of
SGS TAIWAN LTD.
Chemical Laboratory - Taipei



PIN CODE: 558B3182

This document is issued by the Company subject to its General Conditions of Service printed overleaf, available on request or accessible at <https://twap.sgs.com/Terms-and-Conditions.html> and, for electronic format documents, subject to Terms and Conditions for Electronic Documents at <https://twap.sgs.com/Terms-and-Conditions.html>. Attention is drawn to the limitation of liability, indemnification and jurisdiction issues defined therein. Any holder of this document is advised that information contained hereon reflects the Company's findings at the time of its intervention only and within the limits of client's instruction, if any. The Company's sole responsibility is to its Client and this document does not exonerate parties to a transaction from exercising all their rights and obligations under the transaction documents. This document cannot be reproduced, except in full, without prior written approval of the Company. Any unauthorized alteration, forgery or falsification of the content or appearance of this document is unlawful and offenders may be prosecuted to the fullest extent of the law. Unless otherwise stated the results shown in this test report refer only to the sample(s) tested.

Test Report

No. : CE/2020/45308

Date : 2020/05/04

Page : 2 of 12

HITACHI CHEMICAL ELECTRONIC MATERIALS (HONG KONG) LIMITED
 NO.6-8 DAI WANG STREET, TAI PO INDUSTRIAL ESTATE, TAI PO, NEW TERRITORIES, HONG KONG

Test Result(s)

PART NAME No.1 : COPPER COLORED/ORANGE FOIL

Test Item(s)	Unit	Method	MDL	Result	Limit
				No.1	
Cadmium (Cd)	mg/kg	With reference to IEC 62321-5 (2013) and performed by ICP-OES.	2	n.d.	100
Lead (Pb)	mg/kg	With reference to IEC 62321-5 (2013) and performed by ICP-OES.	2	n.d.	1000
Mercury (Hg)	mg/kg	With reference to IEC 62321-4:2013+AMD1:2017 and performed by ICP-OES.	2	n.d.	1000
Hexavalent Chromium Cr(VI)(#2)	µg/cm ²	With reference to IEC 62321-7-1 (2015) and performed by UV-VIS.	0.10	n.d.	-
Sum of PBBs	mg/kg	With reference to IEC 62321-6 (2015) and performed by GC/MS.	-	n.d.	1000
Monobromobiphenyl	mg/kg		5	n.d.	-
Dibromobiphenyl	mg/kg		5	n.d.	-
Tribromobiphenyl	mg/kg		5	n.d.	-
Tetrabromobiphenyl	mg/kg		5	n.d.	-
Pentabromobiphenyl	mg/kg		5	n.d.	-
Hexabromobiphenyl	mg/kg		5	n.d.	-
Heptabromobiphenyl	mg/kg		5	n.d.	-
Octabromobiphenyl	mg/kg		5	n.d.	-
Nonabromobiphenyl	mg/kg		5	n.d.	-
Decabromobiphenyl	mg/kg		5	n.d.	-
Sum of PBDEs	mg/kg		-	n.d.	1000
Monobromodiphenyl ether	mg/kg		5	n.d.	-
Dibromodiphenyl ether	mg/kg		5	n.d.	-
Tribromodiphenyl ether	mg/kg	5	n.d.	-	
Tetrabromodiphenyl ether	mg/kg	5	n.d.	-	
Pentabromodiphenyl ether	mg/kg	5	n.d.	-	
Hexabromodiphenyl ether	mg/kg	5	n.d.	-	
Heptabromodiphenyl ether	mg/kg	5	n.d.	-	
Octabromodiphenyl ether	mg/kg	5	n.d.	-	
Nonabromodiphenyl ether	mg/kg	5	n.d.	-	
Decabromodiphenyl ether	mg/kg	5	n.d.	-	

This document is issued by the Company subject to its General Conditions of Service printed overleaf, available on request or accessible at <https://twap.sgs.com/Terms-and-Conditions.html> and, for electronic format documents, subject to Terms and Conditions for Electronic Documents at <https://twap.sgs.com/Terms-and-Conditions.html>. Attention is drawn to the limitation of liability, indemnification and jurisdiction issues defined therein. Any holder of this document is advised that information contained hereon reflects the Company's findings at the time of its intervention only and within the limits of client's instruction, if any. The Company's sole responsibility is to its Client and this document does not exonerate parties to a transaction from exercising all their rights and obligations under the transaction documents. This document cannot be reproduced, except in full, without prior written approval of the Company. Any unauthorized alteration, forgery or falsification of the content or appearance of this document is unlawful and offenders may be prosecuted to the fullest extent of the law. Unless otherwise stated the results shown in this test report refer only to the sample(s) tested.

Test Report

No. : CE/2020/45308

Date : 2020/05/04

Page : 3 of 12

HITACHI CHEMICAL ELECTRONIC MATERIALS (HONG KONG) LIMITED
 NO.6-8 DAI WANG STREET, TAI PO INDUSTRIAL ESTATE, TAI PO, NEW TERRITORIES, HONG KONG

Test Item(s)	Unit	Method	MDL	Result	Limit
				No.1	
BBP (Butyl Benzyl phthalate) (CAS No.: 85-68-7)	mg/kg	With reference to IEC 62321-8 (2017). Analysis was performed by GC/MS.	50	n.d.	1000
DBP (Dibutyl phthalate) (CAS No.: 84-74-2)	mg/kg		50	n.d.	1000
DEHP (Di- (2-ethylhexyl) phthalate) (CAS No.: 117-81-7)	mg/kg		50	n.d.	1000
DIBP (Di-isobutyl phthalate) (CAS No.: 84-69-5)	mg/kg		50	n.d.	1000
DIDP (Di-isodecyl phthalate) (CAS No.: 26761-40-0; 68515-49-1)	mg/kg		50	n.d.	-
DINP (Di-isononyl phthalate) (CAS No.: 28553-12-0; 68515-48-0)	mg/kg		50	n.d.	-
DNOP (Di-n-octyl phthalate) (CAS No.: 117-84-0)	mg/kg		50	n.d.	-
DMEP (Bis (2-methoxyethyl) phthalate) (CAS No.: 117-82-8)	mg/kg		50	n.d.	-
DIPP (Di-iso-pentyl phthalate) (CAS No.: 605-50-5)	mg/kg		50	n.d.	-
DNHP (Di-n-hexyl phthalate) (CAS No.: 84-75-3)	mg/kg		50	n.d.	-
DIHP (1,2-Benzenedicarboxylic acid, di-C6-8-branched alkyl esters, C7-rich) (CAS No.: 71888-89-6)	mg/kg		50	n.d.	-
DHNUP (1,2-Benzenedicarboxylic acid, di-C7-11-branched and linear alkyl esters) (CAS No.: 68515-42-4)	mg/kg		50	n.d.	-
Halogen					
Halogen-Fluorine (F) (CAS No.: 14762-94-8)	mg/kg	With reference to BS EN 14582 (2016). Analysis was performed by IC.	50	n.d.	-
Halogen-Chlorine (Cl) (CAS No.: 22537-15-1)	mg/kg		50	n.d.	-
Halogen-Bromine (Br) (CAS No.: 10097-32-2)	mg/kg		50	n.d.	-
Halogen-Iodine (I) (CAS No.: 14362-44-8)	mg/kg		50	n.d.	-

This document is issued by the Company subject to its General Conditions of Service printed overleaf, available on request or accessible at <https://twap.sgs.com/Terms-and-Conditions.html> and, for electronic format documents, subject to Terms and Conditions for Electronic Documents at <https://twap.sgs.com/Terms-and-Conditions.html>. Attention is drawn to the limitation of liability, indemnification and jurisdiction issues defined therein. Any holder of this document is advised that information contained hereon reflects the Company's findings at the time of its intervention only and within the limits of client's instruction, if any. The Company's sole responsibility is to its Client and this document does not exonerate parties to a transaction from exercising all their rights and obligations under the transaction documents. This document cannot be reproduced, except in full, without prior written approval of the Company. Any unauthorized alteration, forgery or falsification of the content or appearance of this document is unlawful and offenders may be prosecuted to the fullest extent of the law. Unless otherwise stated the results shown in this test report refer only to the sample(s) tested.

Test Report

No. : CE/2020/45308

Date : 2020/05/04

Page : 4 of 12

HITACHI CHEMICAL ELECTRONIC MATERIALS (HONG KONG) LIMITED
 NO.6-8 DAI WANG STREET, TAI PO INDUSTRIAL ESTATE, TAI PO, NEW TERRITORIES, HONG KONG

Test Item(s)	Unit	Method	MDL	Result	Limit
				No.1	
Hexabromocyclododecane (HBCDD) and all major diastereoisomers identified (α - HBCDD, β - HBCDD, γ - HBCDD) (CAS No.: 25637-99-4 and 3194-55-6 (134237-51-7, 134237-50-6, 134237-52-8))	mg/kg	With reference to IEC 62321 (2008). Analysis was performed by GC/MS.	5	n.d.	-
Perfluorooctane sulfonates (PFOS-Acid, Metal Salt, Amide)	mg/kg	With reference to CEN/TS 15968 (2010). Analysis was performed by LC/MS.	0.01	n.d.	-
PFOA (CAS No.: 335-67-1)	mg/kg	With reference to CEN/TS 15968 (2010). Analysis was performed by LC/MS.	0.01	n.d.	-
Polyvinyl chloride (PVC)	**	Analysis was performed by FTIR and FLAME Test.	-	Negative	-

Note :

1. mg/kg = ppm ; 0.1wt% = 1000ppm
2. MDL = Method Detection Limit
3. n.d. = Not Detected = less than MDL
4. " - " = Not Regulated
5. ** = Qualitative analysis (No Unit)
6. Negative = Undetectable / Positive = Detectable
7. (#2) =
 - a. The sample is positive for Cr(VI) if the Cr(VI) concentration is greater than 0.13 $\mu\text{g}/\text{cm}^2$.
The sample coating is considered to contain Cr(VI)
 - b. The sample is negative for Cr(VI) if Cr(VI) is n.d. (concentration less than 0.10 $\mu\text{g}/\text{cm}^2$).
The coating is considered a non-Cr(VI) based coating
 - c. The result between 0.10 $\mu\text{g}/\text{cm}^2$ and 0.13 $\mu\text{g}/\text{cm}^2$ is considered to be inconclusive - unavoidable coating variations may influence the determination.
8. The statement of compliance conformity is based on comparison of testing results and limits.

PFOS Reference Information : POPs - (EU) 2019/1021

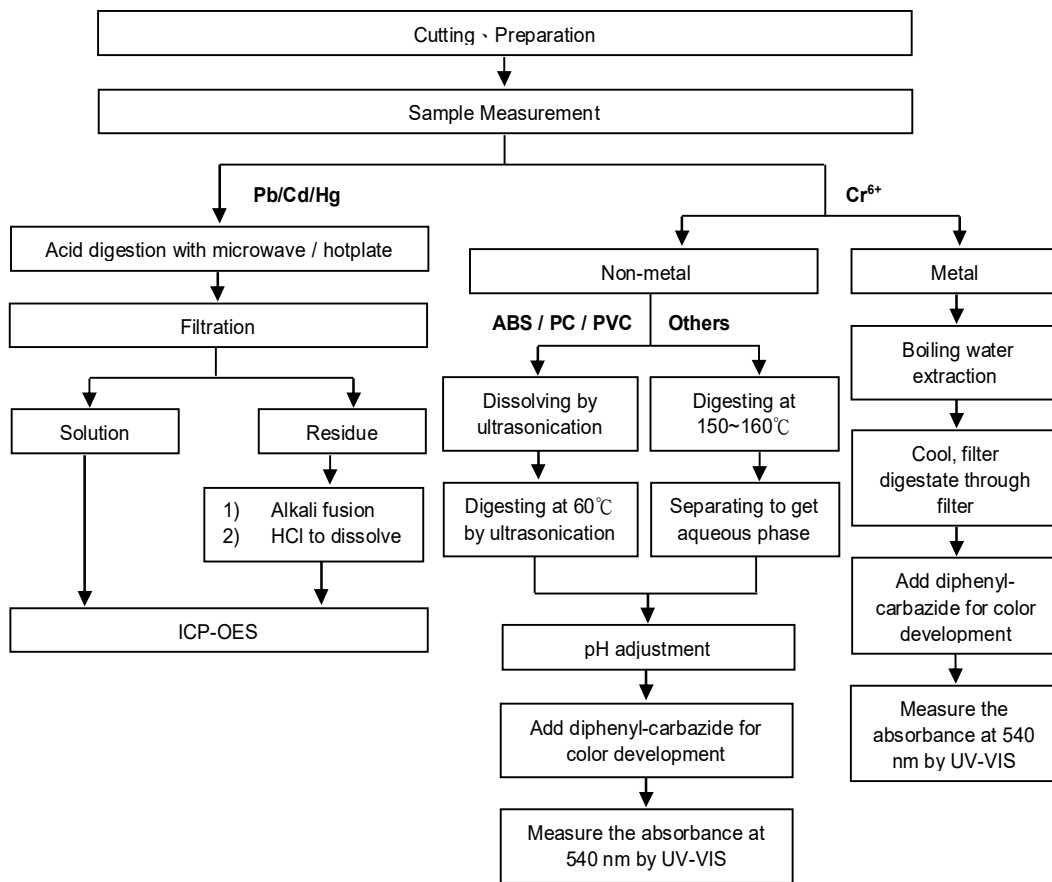
Outlawing PFOS as substances or preparations in concentrations above 0.001% (10ppm), in semi-finished products or articles or parts at a level above 0.1%(1000ppm), in textiles or other coated materials above 1 $\mu\text{g}/\text{m}^2$.

This document is issued by the Company subject to its General Conditions of Service printed overleaf, available on request or accessible at <https://twap.sgs.com/Terms-and-Conditions.html> and, for electronic format documents, subject to Terms and Conditions for Electronic Documents at <https://twap.sgs.com/Terms-and-Conditions.html>. Attention is drawn to the limitation of liability, indemnification and jurisdiction issues defined therein. Any holder of this document is advised that information contained hereon reflects the Company's findings at the time of its intervention only and within the limits of client's instruction, if any. The Company's sole responsibility is to its Client and this document does not exonerate parties to a transaction from exercising all their rights and obligations under the transaction documents. This document cannot be reproduced, except in full, without prior written approval of the Company. Any unauthorized alteration, forgery or falsification of the content or appearance of this document is unlawful and offenders may be prosecuted to the fullest extent of the law. Unless otherwise stated the results shown in this test report refer only to the sample(s) tested.

HITACHI CHEMICAL ELECTRONIC MATERIALS (HONG KONG) LIMITED
 NO.6-8 DAI WANG STREET, TAI PO INDUSTRIAL ESTATE, TAI PO, NEW TERRITORIES, HONG KONG

Analytical flow chart of Heavy Metal

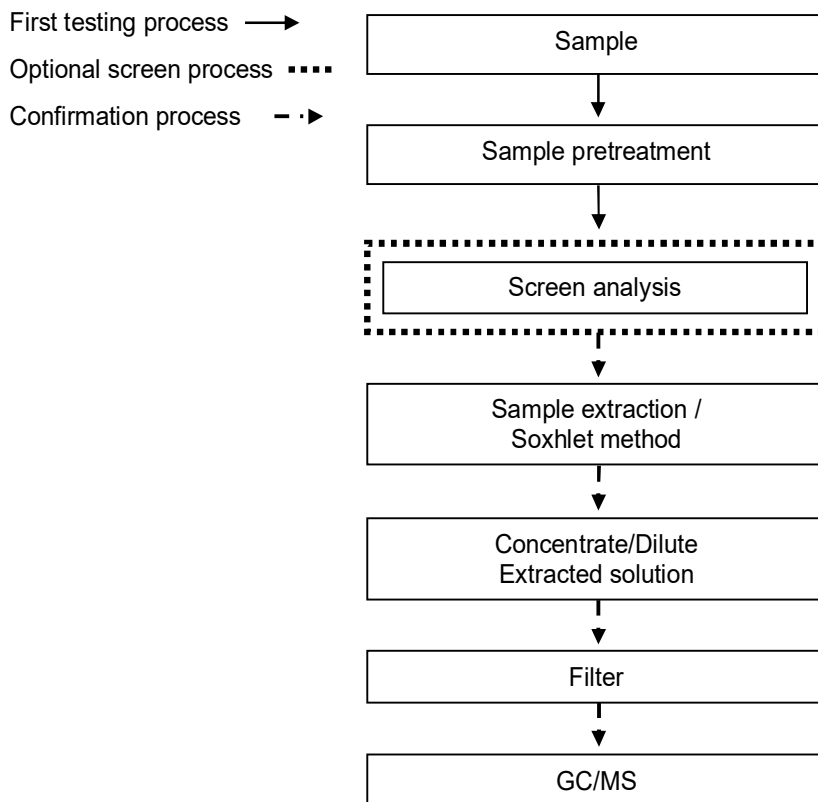
These samples were dissolved totally by pre-conditioning method according to below flow chart. (Cr⁶⁺ test method excluded)



This document is issued by the Company subject to its General Conditions of Service printed overleaf, available on request or accessible at <https://twap.sgs.com/Terms-and-Conditions.html> and, for electronic format documents, subject to Terms and Conditions for Electronic Documents at <https://twap.sgs.com/Terms-and-Conditions.html>. Attention is drawn to the limitation of liability, indemnification and jurisdiction issues defined therein. Any holder of this document is advised that information contained hereon reflects the Company's findings at the time of its intervention only and within the limits of client's instruction, if any. The Company's sole responsibility is to its Client and this document does not exonerate parties to a transaction from exercising all their rights and obligations under the transaction documents. This document cannot be reproduced, except in full, without prior written approval of the Company. Any unauthorized alteration, forgery or falsification of the content or appearance of this document is unlawful and offenders may be prosecuted to the fullest extent of the law. Unless otherwise stated the results shown in this test report refer only to the sample(s) tested.

HITACHI CHEMICAL ELECTRONIC MATERIALS (HONG KONG) LIMITED
 NO.6-8 DAI WANG STREET, TAI PO INDUSTRIAL ESTATE, TAI PO, NEW TERRITORIES, HONG KONG

Analytical flow chart – PBB / PBDE

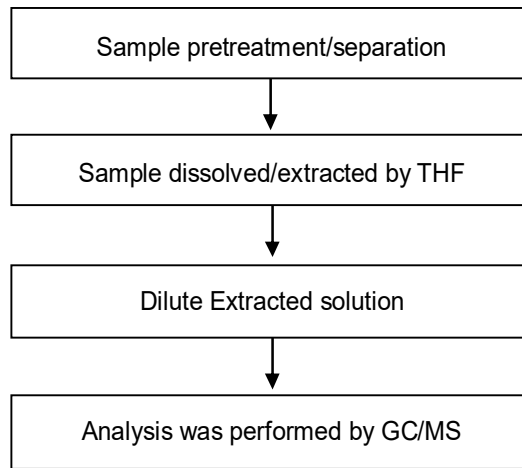


This document is issued by the Company subject to its General Conditions of Service printed overleaf, available on request or accessible at <https://wap.sgs.com/Terms-and-Conditions.html> and, for electronic format documents, subject to Terms and Conditions for Electronic Documents at <https://wap.sgs.com/Terms-and-Conditions.html>. Attention is drawn to the limitation of liability, indemnification and jurisdiction issues defined therein. Any holder of this document is advised that information contained hereon reflects the Company's findings at the time of its intervention only and within the limits of client's instruction, if any. The Company's sole responsibility is to its Client and this document does not exonerate parties to a transaction from exercising all their rights and obligations under the transaction documents. This document cannot be reproduced, except in full, without prior written approval of the Company. Any unauthorized alteration, forgery or falsification of the content or appearance of this document is unlawful and offenders may be prosecuted to the fullest extent of the law. Unless otherwise stated the results shown in this test report refer only to the sample(s) tested.

HITACHI CHEMICAL ELECTRONIC MATERIALS (HONG KONG) LIMITED
NO.6-8 DAI WANG STREET, TAI PO INDUSTRIAL ESTATE, TAI PO, NEW TERRITORIES, HONG KONG

Analytical flow chart - Phthalate

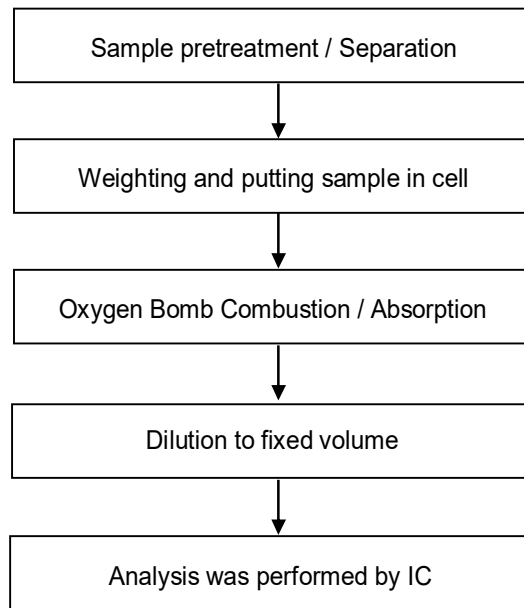
【Test method: IEC 62321-8】



This document is issued by the Company subject to its General Conditions of Service printed overleaf, available on request or accessible at <https://twap.sgs.com/Terms-and-Conditions.html> and, for electronic format documents, subject to Terms and Conditions for Electronic Documents at <https://twap.sgs.com/Terms-and-Conditions.html>. Attention is drawn to the limitation of liability, indemnification and jurisdiction issues defined therein. Any holder of this document is advised that information contained hereon reflects the Company's findings at the time of its intervention only and within the limits of client's instruction, if any. The Company's sole responsibility is to its Client and this document does not exonerate parties to a transaction from exercising all their rights and obligations under the transaction documents. This document cannot be reproduced, except in full, without prior written approval of the Company. Any unauthorized alteration, forgery or falsification of the content or appearance of this document is unlawful and offenders may be prosecuted to the fullest extent of the law. Unless otherwise stated the results shown in this test report refer only to the sample(s) tested.

HITACHI CHEMICAL ELECTRONIC MATERIALS (HONG KONG) LIMITED
NO.6-8 DAI WANG STREET, TAI PO INDUSTRIAL ESTATE, TAI PO, NEW TERRITORIES, HONG KONG

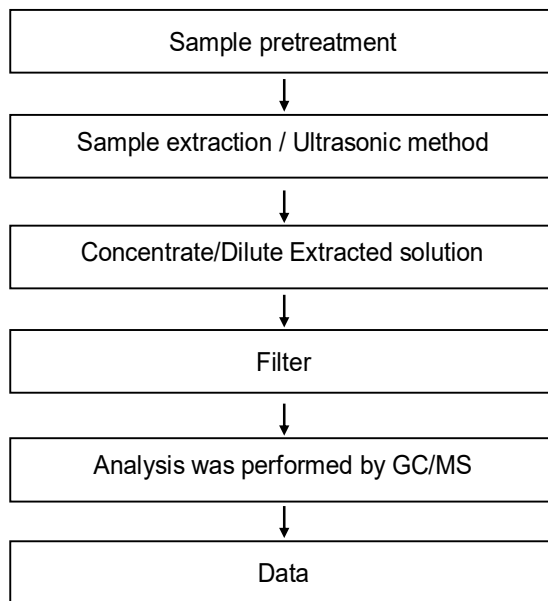
Analytical flow chart - Halogen



This document is issued by the Company subject to its General Conditions of Service printed overleaf, available on request or accessible at <https://twap.sgs.com/Terms-and-Conditions.html> and, for electronic format documents, subject to Terms and Conditions for Electronic Documents at <https://twap.sgs.com/Terms-and-Conditions.html>. Attention is drawn to the limitation of liability, indemnification and jurisdiction issues defined therein. Any holder of this document is advised that information contained hereon reflects the Company's findings at the time of its intervention only and within the limits of client's instruction, if any. The Company's sole responsibility is to its Client and this document does not exonerate parties to a transaction from exercising all their rights and obligations under the transaction documents. This document cannot be reproduced, except in full, without prior written approval of the Company. Any unauthorized alteration, forgery or falsification of the content or appearance of this document is unlawful and offenders may be prosecuted to the fullest extent of the law. Unless otherwise stated the results shown in this test report refer only to the sample(s) tested.

HITACHI CHEMICAL ELECTRONIC MATERIALS (HONG KONG) LIMITED
 NO.6-8 DAI WANG STREET, TAI PO INDUSTRIAL ESTATE, TAI PO, NEW TERRITORIES, HONG KONG

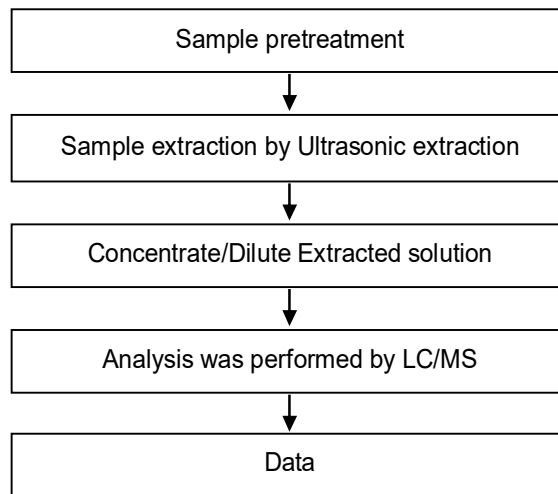
Analytical flow chart - HBCDD



This document is issued by the Company subject to its General Conditions of Service printed overleaf, available on request or accessible at <https://twap.sgs.com/Terms-and-Conditions.html> and, for electronic format documents, subject to Terms and Conditions for Electronic Documents at <https://twap.sgs.com/Terms-and-Conditions.html>. Attention is drawn to the limitation of liability, indemnification and jurisdiction issues defined therein. Any holder of this document is advised that information contained hereon reflects the Company's findings at the time of its intervention only and within the limits of client's instruction, if any. The Company's sole responsibility is to its Client and this document does not exonerate parties to a transaction from exercising all their rights and obligations under the transaction documents. This document cannot be reproduced, except in full, without prior written approval of the Company. Any unauthorized alteration, forgery or falsification of the content or appearance of this document is unlawful and offenders may be prosecuted to the fullest extent of the law. Unless otherwise stated the results shown in this test report refer only to the sample(s) tested.

HITACHI CHEMICAL ELECTRONIC MATERIALS (HONG KONG) LIMITED
NO.6-8 DAI WANG STREET, TAI PO INDUSTRIAL ESTATE, TAI PO, NEW TERRITORIES, HONG KONG

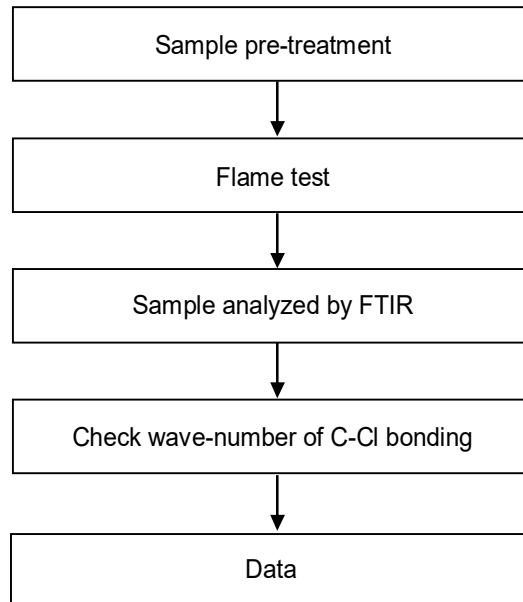
Analytical flow chart - PFOA/PFOS



This document is issued by the Company subject to its General Conditions of Service printed overleaf, available on request or accessible at <https://twap.sgs.com/Terms-and-Conditions.html> and, for electronic format documents, subject to Terms and Conditions for Electronic Documents at <https://twap.sgs.com/Terms-and-Conditions.html>. Attention is drawn to the limitation of liability, indemnification and jurisdiction issues defined therein. Any holder of this document is advised that information contained hereon reflects the Company's findings at the time of its intervention only and within the limits of client's instruction, if any. The Company's sole responsibility is to its Client and this document does not exonerate parties to a transaction from exercising all their rights and obligations under the transaction documents. This document cannot be reproduced, except in full, without prior written approval of the Company. Any unauthorized alteration, forgery or falsification of the content or appearance of this document is unlawful and offenders may be prosecuted to the fullest extent of the law. Unless otherwise stated the results shown in this test report refer only to the sample(s) tested.

HITACHI CHEMICAL ELECTRONIC MATERIALS (HONG KONG) LIMITED
NO.6-8 DAI WANG STREET, TAI PO INDUSTRIAL ESTATE, TAI PO, NEW TERRITORIES, HONG KONG

Analysis flow chart - PVC



This document is issued by the Company subject to its General Conditions of Service printed overleaf, available on request or accessible at <https://twap.sgs.com/Terms-and-Conditions.html> and, for electronic format documents, subject to Terms and Conditions for Electronic Documents at <https://twap.sgs.com/Terms-and-Conditions.html>. Attention is drawn to the limitation of liability, indemnification and jurisdiction issues defined therein. Any holder of this document is advised that information contained hereon reflects the Company's findings at the time of its intervention only and within the limits of client's instruction, if any. The Company's sole responsibility is to its Client and this document does not exonerate parties to a transaction from exercising all their rights and obligations under the transaction documents. This document cannot be reproduced, except in full, without prior written approval of the Company. Any unauthorized alteration, forgery or falsification of the content or appearance of this document is unlawful and offenders may be prosecuted to the fullest extent of the law. Unless otherwise stated the results shown in this test report refer only to the sample(s) tested.

Test Report

No. : CE/2020/45308

Date : 2020/05/04

Page : 12 of 12

HITACHI CHEMICAL ELECTRONIC MATERIALS (HONG KONG) LIMITED
NO.6-8 DAI WANG STREET, TAI PO INDUSTRIAL ESTATE, TAI PO, NEW TERRITORIES, HONG KONG

* The tested sample / part is marked by an arrow if it's shown on the photo. *

CE/2020/45308



** End of Report **

This document is issued by the Company subject to its General Conditions of Service printed overleaf, available on request or accessible at <https://twap.sgs.com/Terms-and-Conditions.html> and, for electronic format documents, subject to Terms and Conditions for Electronic Documents at <https://twap.sgs.com/Terms-and-Conditions.html>. Attention is drawn to the limitation of liability, indemnification and jurisdiction issues defined therein. Any holder of this document is advised that information contained hereon reflects the Company's findings at the time of its intervention only and within the limits of client's instruction, if any. The Company's sole responsibility is to its Client and this document does not exonerate parties to a transaction from exercising all their rights and obligations under the transaction documents. This document cannot be reproduced, except in full, without prior written approval of the Company. Any unauthorized alteration, forgery or falsification of the content or appearance of this document is unlawful and offenders may be prosecuted to the fullest extent of the law. Unless otherwise stated the results shown in this test report refer only to the sample(s) tested.