



THE INDUSTRIAL ANALYSIS SERVICE LTD.

TEL:+81-48-924-7151 FAX:+81-48-928-3587 e-mail:ias@sangyobunseki.co.jp

2-11-7 Yatsuka Souka Saitama 340-0028 Japan

TEST REPORT

Request No. 10035353319
Report No. ES220000000587-01
Date of issue: 10 March 2022

To. KYOCERA Corporation

Address: I-1 Kokubuyamashita Kirishima Kagoshima Japan

Name of sample: NCO-165PZ, PZB, PZHC, PZH Ver. 4

Date of receipt of sample: 1 March 2022

Measurement days: 1 March 2022 ~ 10 March 2022

The following is the report on the requested test of the sample

Test Items	Unit	Test result	D.L.	Test Method
Cd	ppm	N.D.	2.0	With reference to IEC62321-5(2013) ICP/MS
Pb	ppm	2.1	2.0	With reference to IEC62321-5(2013) ICP/MS
Cr(VI)	ppm	N.D.	2.0	With reference to IEC62321-7-1(2015) Boiling water extraction/UV-VIS
Hg	ppm	N.D.	2.0	With reference to IEC62321-4(2013)/AMD1(2017) ICP/MS
PBBs	ppm	N.D.	5.0	With reference to IEC62321-6(2015) GC/MS
PBDEs	ppm	N.D.	5.0	With reference to IEC62321-6(2015) GC/MS
Bis(2-ethylhexyl) phthalate (DEHP)	ppm	N.D.	50	With reference to IEC62321-8(2017) GC/MS
Butylbenzyl phthalate (BBP)	ppm	N.D.	50	With reference to IEC62321-8(2017) GC/MS
Dibutyl phthalate (DBP)	ppm	N.D.	50	With reference to IEC62321-8(2017) GC/MS
Diisobutyl phthalate (DIBP)	ppm	N.D.	50	With reference to IEC62321-8(2017) GC/MS
Remainder of page intentionally left blank				

Note: The results shown in this test report refer only to the sample(s) tested.
DL=Determination Limit

N.D. means the analysis result is less than fixed quality lower limit level calculated according to our established precision management condition.
mg/kg=ppm

THE INDUSTRIAL ANALYSIS SERVICE LTD.

TAKANORI YOSHIDA

Test Items	Unit	Test result	D.L.	Test Method
Monobromobiphenyl (MonoBB)	ppm	N.D.	-	With reference to IEC62321-6(2015) GC/MS
Dibromobiphenyl (DiBB)	ppm	N.D.	-	With reference to IEC62321-6(2015) GC/MS
Tribromobiphenyl (TriBB)	ppm	N.D.	-	With reference to IEC62321-6(2015) GC/MS
Tetrabromobiphenyl (TetraBB)	ppm	N.D.	-	With reference to IEC62321-6(2015) GC/MS
Pentabromobiphenyl (PentaBB)	ppm	N.D.	-	With reference to IEC62321-6(2015) GC/MS
Hexabromobiphenyl (HexaBB)	ppm	N.D.	-	With reference to IEC62321-6(2015) GC/MS
Heptabromobiphenyl (HeptaBB)	ppm	N.D.	-	With reference to IEC62321-6(2015) GC/MS
Octabromobiphenyl (OctaBB)	ppm	N.D.	-	With reference to IEC62321-6(2015) GC/MS
Nonabromobiphenyl (NonaBB)	ppm	N.D.	-	With reference to IEC62321-6(2015) GC/MS
Decabromobiphenyl (DecaBB)	ppm	N.D.	-	With reference to IEC62321-6(2015) GC/MS
SUM PBBs	ppm	N.D.	5.0	With reference to IEC62321-6(2015) GC/MS
Monobromodiphenylether (MonoBDE)	ppm	N.D.	-	With reference to IEC62321-6(2015) GC/MS
Dibromodiphenylether (DiBDE)	ppm	N.D.	-	With reference to IEC62321-6(2015) GC/MS
Tribromodiphenylether (TriBDE)	ppm	N.D.	-	With reference to IEC62321-6(2015) GC/MS
Tetrabromodiphenylether (TetraBDE)	ppm	N.D.	-	With reference to IEC62321-6(2015) GC/MS
Pentabromodiphenylether (PentaBDE)	ppm	N.D.	-	With reference to IEC62321-6(2015) GC/MS
Hexabromodiphenylether (HexaBDE)	ppm	N.D.	-	With reference to IEC62321-6(2015) GC/MS
Heptabromodiphenylether (HeptaBDE)	ppm	N.D.	-	With reference to IEC62321-6(2015) GC/MS
Octabromodiphenylether (OctaBDE)	ppm	N.D.	-	With reference to IEC62321-6(2015) GC/MS
Nonabromodiphenylether (NonaBDE)	ppm	N.D.	-	With reference to IEC62321-6(2015) GC/MS
Decabromodiphenylether (DecaBDE)	ppm	N.D.	-	With reference to IEC62321-6(2015) GC/MS
SUM PBDEs	ppm	N.D.	5.0	With reference to IEC62321-6(2015) GC/MS
Remainder of page intentionally left blank				
Note: The results shown in this test report refer only to the sample(s) tested.				

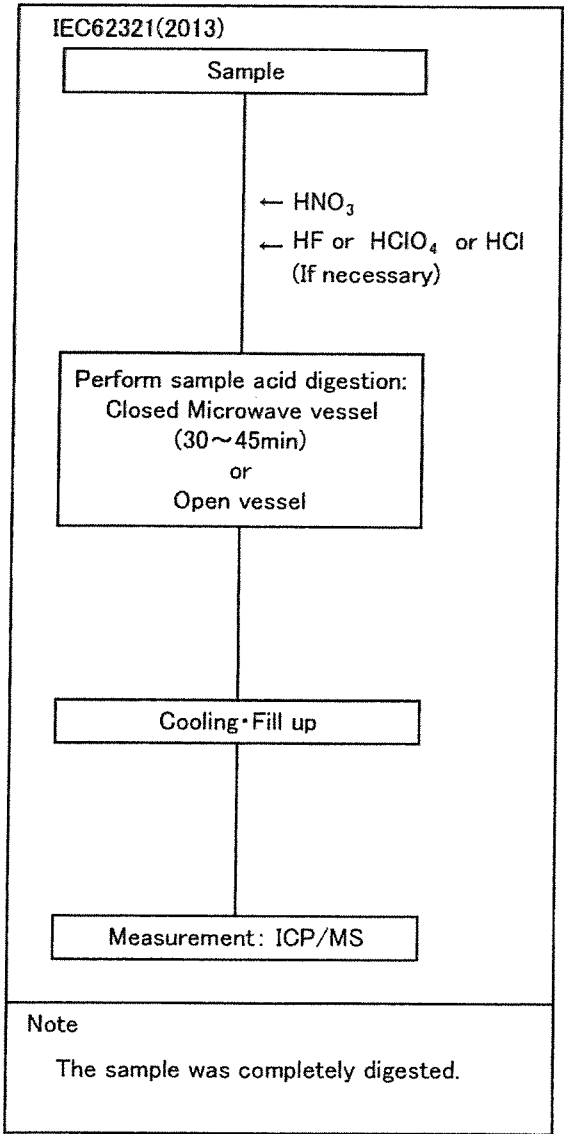
N.D. means the analysis result is less than fixed quality lower limit level calculated according to our established precision management condition.
mg/kg=ppm

Flow chart

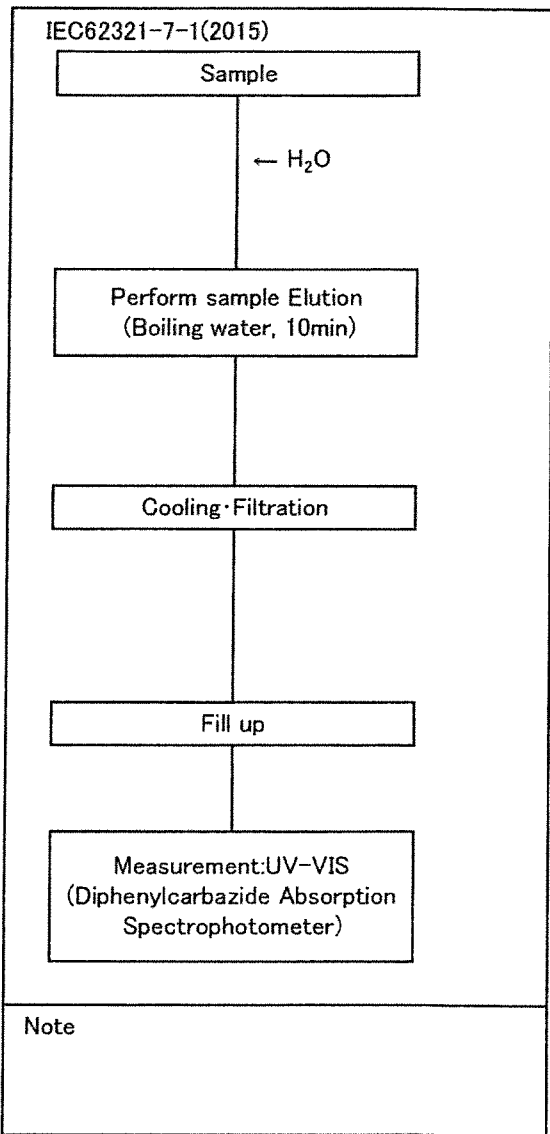
Report No.	: ES22000000587-01
Measurement days	: 1 March 2022 ~ 10 March 2022
Operator	: Kensho Nakajima Wataru Imaoka

Cd, Pb, Hg

Cr (VI)



ICP/MS : Agilent Technologies 7700X



UV-VIS : HITACHI High-Technologies U-2910

Flow chart

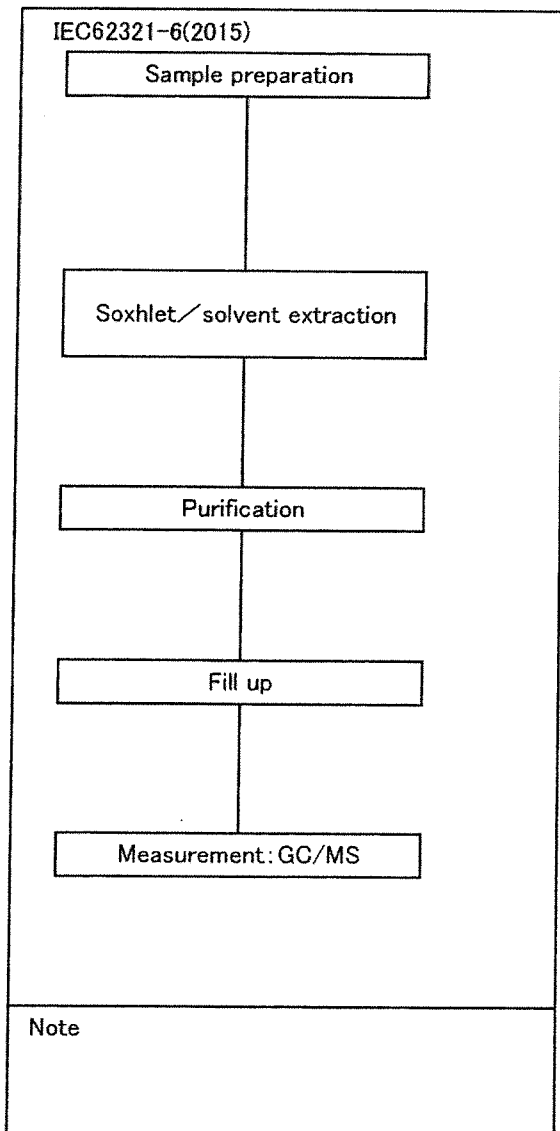
Report No. : ES22000000587-01

Measurement days : 1 March 2022 ~ 10 March 2022

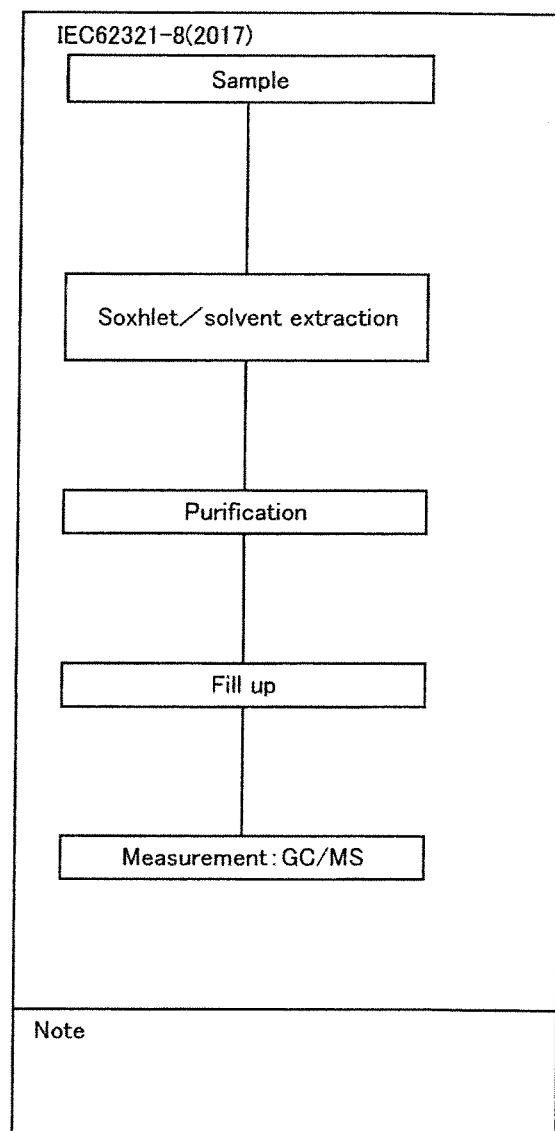
Operator : Yuichi Kuboji

PBBs, PBDEs

phthalates

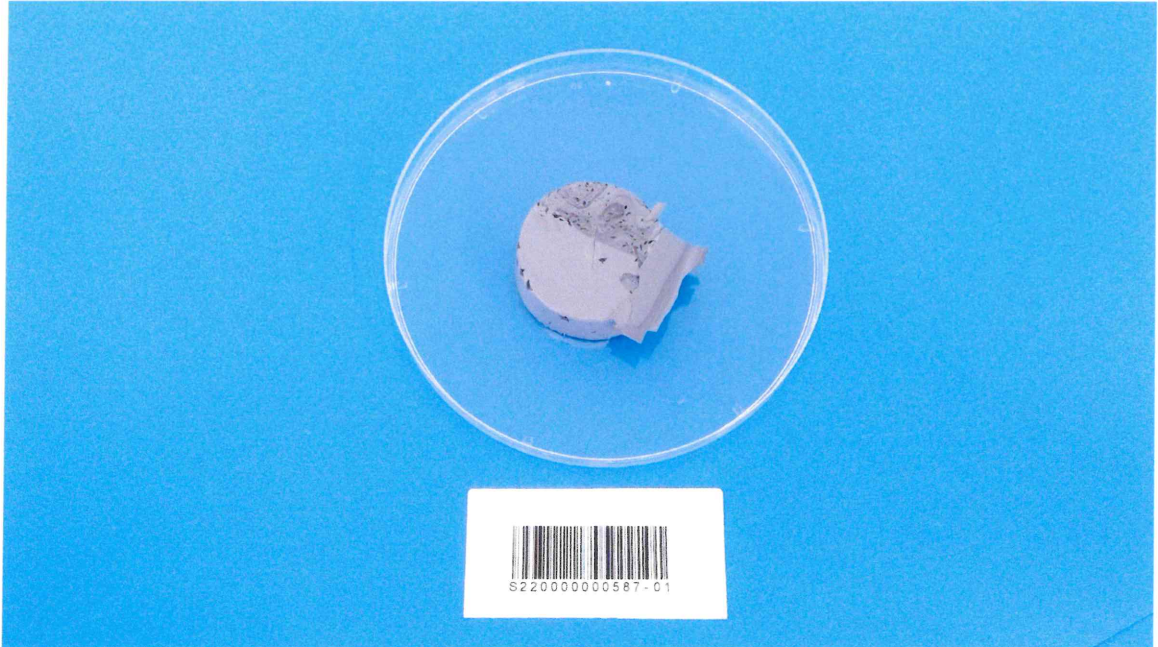


GC/MS: Agilent Technologies GC 7890B MS 5977A



GC/MS : SHIMADZU GCMS-QP2020

Report No. ES220000000587-01



THE INDUSTRIAL ANALYSIS SERVICE LTD.