



# Test Report

No.: ETR21605807

Date: 06-Jul-2021

Page: 1 of 7

NAMICS CORPORATION  
3993 NIGORIKAWA, KITA-KU, NIIGATA-CITY 950-3131, JAPAN

The following sample(s) was/were submitted and identified by/on behalf of the applicant as:

Sample Submitted By : NAMICS CORPORATION  
Sample Name : DM4130HT/J154-5

Sample Receiving Date : 30-Jun-2021  
Testing Period : 30-Jun-2021 to 06-Jul-2021

Test Requested : As specified by client, with reference to RoHS 2011/65/EU Annex II and amending Directive (EU) 2015/863 to determine Cadmium, Lead, Mercury, Cr(VI), PBBs, PBDEs, DBP, BBP, DEHP, DIBP contents in the submitted sample(s).

Test Results : Please refer to following pages.

  
Troy Chang, Manager  
Signed for and on behalf of  
SGS TAIWAN LTD.  
Chemical Laboratory - Taipei



PIN CODE: 74DAD1B4

This document is issued by the Company subject to its General Conditions of Service printed overleaf, available on request or accessible at <https://www.sgs.com.tw/terms-of-service> and, for electronic format documents, subject to Terms and Conditions for Electronic Documents at <https://www.sgs.com.tw/terms-of-service>. Attention is drawn to the limitation of liability, indemnification and jurisdiction issues defined therein. Any holder of this document is advised that information contained hereon reflects the Company's findings at the time of its intervention only and within the limits of client's instruction, if any. The Company's sole responsibility is to its Client and this document does not exonerate parties to a transaction from exercising all their rights and obligations under the transaction documents. This document cannot be reproduced, except in full, without prior written approval of the Company. Any unauthorized alteration, forgery or falsification of the content or appearance of this document is unlawful and offenders may be prosecuted to the fullest extent of the law. Unless otherwise stated the results shown in this test report refer only to the sample(s) tested.

# Test Report

No.: ETR21605807

Date: 06-Jul-2021

Page: 2 of 7

NAMICS CORPORATION  
3993 NIGORIKAWA, KITA-KU, NIIGATA-CITY 950-3131, JAPAN

## Test Part Description

No.1 : SILVER COLORED PASTE

## Test Result(s)

Test Item(s)	Method	Unit	MDL	Result
				No.1
Cadmium (Cd) (CAS No.: 7440-43-9)	With reference to IEC 62321-5: 2013, analysis was performed by ICP-OES.	mg/kg	2	n.d.
Lead (Pb) (CAS No.: 7439-92-1)		mg/kg	2	n.d.
Mercury (Hg) (CAS No.: 7439-97-6)	With reference to IEC 62321-4: 2013+ AMD1: 2017, analysis was performed by ICP-OES.	mg/kg	2	n.d.
Hexavalent Chromium Cr(VI) (CAS No.: 18540-29-9)	With reference to IEC 62321-7-2: 2017, analysis was performed by UV-VIS.	mg/kg	8	n.d.
Monobromobiphenyl	With reference to IEC 62321-6: 2015, analysis was performed by GC/MS.	mg/kg	5	n.d.
Dibromobiphenyl		mg/kg	5	n.d.
Tribromobiphenyl		mg/kg	5	n.d.
Tetrabromobiphenyl		mg/kg	5	n.d.
Pentabromobiphenyl		mg/kg	5	n.d.
Hexabromobiphenyl		mg/kg	5	n.d.
Heptabromobiphenyl		mg/kg	5	n.d.
Octabromobiphenyl		mg/kg	5	n.d.
Nonabromobiphenyl		mg/kg	5	n.d.
Decabromobiphenyl		mg/kg	5	n.d.
<b>Sum of PBBs</b>		mg/kg	-	n.d.
Monobromodiphenyl ether	With reference to IEC 62321-6: 2015, analysis was performed by GC/MS.	mg/kg	5	n.d.
Dibromodiphenyl ether		mg/kg	5	n.d.
Tribromodiphenyl ether		mg/kg	5	n.d.
Tetrabromodiphenyl ether		mg/kg	5	n.d.
Pentabromodiphenyl ether		mg/kg	5	n.d.
Hexabromodiphenyl ether		mg/kg	5	n.d.
Heptabromodiphenyl ether		mg/kg	5	n.d.
Octabromodiphenyl ether		mg/kg	5	n.d.
Nonabromodiphenyl ether		mg/kg	5	n.d.
Decabromodiphenyl ether		mg/kg	5	n.d.
<b>Sum of PBDEs</b>		mg/kg	-	n.d.

This document is issued by the Company subject to its General Conditions of Service printed overleaf, available on request or accessible at <https://www.sgs.com.tw/terms-of-service> and, for electronic format documents, subject to Terms and Conditions for Electronic Documents at <https://www.sgs.com.tw/terms-of-service>. Attention is drawn to the limitation of liability, indemnification and jurisdiction issues defined therein. Any holder of this document is advised that information contained hereon reflects the Company's findings at the time of its intervention only and within the limits of client's instruction, if any. The Company's sole responsibility is to its Client and this document does not exonerate parties to a transaction from exercising all their rights and obligations under the transaction documents. This document cannot be reproduced, except in full, without prior written approval of the Company. Any unauthorized alteration, forgery or falsification of the content or appearance of this document is unlawful and offenders may be prosecuted to the fullest extent of the law. Unless otherwise stated the results shown in this test report refer only to the sample(s) tested.

# Test Report

No.: ETR21605807

Date: 06-Jul-2021

Page: 3 of 7

NAMICS CORPORATION

3993 NIGORIKAWA, KITA-KU, NIIGATA-CITY 950-3131, JAPAN

Test Item(s)	Method	Unit	MDL	Result
				No.1
Butyl benzyl phthalate (BBP) (CAS No.: 85-68-7)	With reference to IEC 62321-8: 2017, analysis was performed by GC/MS.	mg/kg	50	n.d.
Dibutyl phthalate (DBP) (CAS No.: 84-74-2)		mg/kg	50	n.d.
Diisobutyl phthalate (DIBP) (CAS No.: 84-69-5)		mg/kg	50	n.d.
Di-(2-ethylhexyl) phthalate (DEHP) (CAS No.: 117-81-7)		mg/kg	50	n.d.

**Note :**

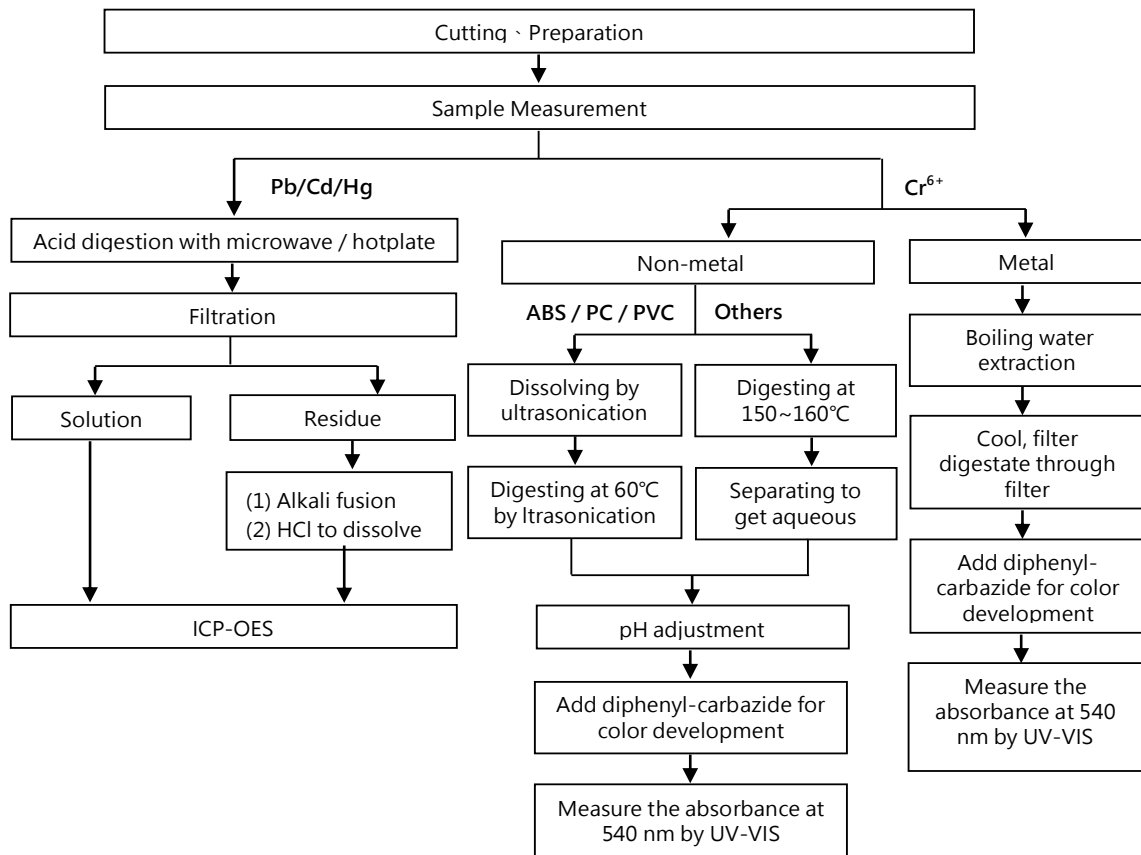
1. mg/kg = ppm ; 0.1wt% = 1000ppm
2. MDL = Method Detection Limit
3. n.d. = Not Detected ( Less than MDL)
4. "-" = Not Regulated

This document is issued by the Company subject to its General Conditions of Service printed overleaf, available on request or accessible at <https://www.sgs.com.tw/terms-of-service> and, for electronic format documents, subject to Terms and Conditions for Electronic Documents at <https://www.sgs.com.tw/terms-of-service>. Attention is drawn to the limitation of liability, indemnification and jurisdiction issues defined therein. Any holder of this document is advised that information contained hereon reflects the Company's findings at the time of its intervention only and within the limits of client's instruction, if any. The Company's sole responsibility is to its Client and this document does not exonerate parties to a transaction from exercising all their rights and obligations under the transaction documents. This document cannot be reproduced, except in full, without prior written approval of the Company. Any unauthorized alteration, forgery or falsification of the content or appearance of this document is unlawful and offenders may be prosecuted to the fullest extent of the law. Unless otherwise stated the results shown in this test report refer only to the sample(s) tested.

NAMICS CORPORATION  
3993 NIGORIKAWA, KITA-KU, NIIGATA-CITY 950-3131, JAPAN

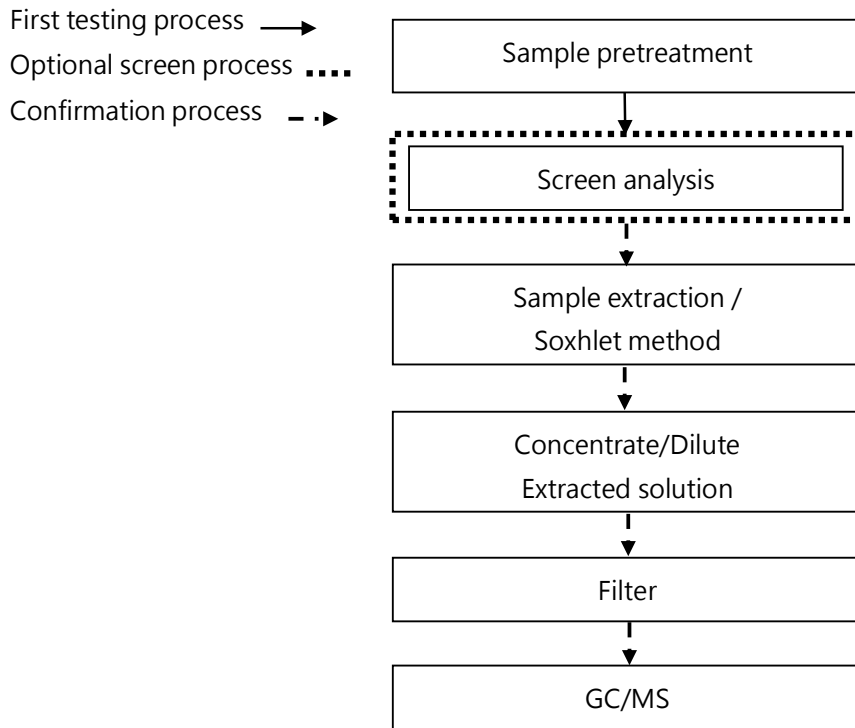
### Analytical flow chart of Heavy Metal

These samples were dissolved totally by pre-conditioning method according to below flow chart.  
( Cr<sup>6+</sup> test method excluded )



This document is issued by the Company subject to its General Conditions of Service printed overleaf, available on request or accessible at <https://www.sgs.com.tw/terms-of-service> and, for electronic format documents, subject to Terms and Conditions for Electronic Documents at <https://www.sgs.com.tw/terms-of-service>. Attention is drawn to the limitation of liability, indemnification and jurisdiction issues defined therein. Any holder of this document is advised that information contained hereon reflects the Company's findings at the time of its intervention only and within the limits of client's instruction, if any. The Company's sole responsibility is to its Client and this document does not exonerate parties to a transaction from exercising all their rights and obligations under the transaction documents. This document cannot be reproduced, except in full, without prior written approval of the Company. Any unauthorized alteration, forgery or falsification of the content or appearance of this document is unlawful and offenders may be prosecuted to the fullest extent of the law. Unless otherwise stated the results shown in this test report refer only to the sample(s) tested.

### Analytical flow chart – PBBs / PBDEs



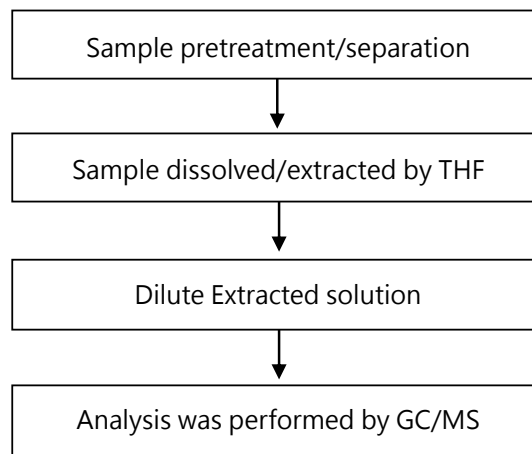
This document is issued by the Company subject to its General Conditions of Service printed overleaf, available on request or accessible at <https://www.sgs.com.tw/terms-of-service> and, for electronic format documents, subject to Terms and Conditions for Electronic Documents at <https://www.sgs.com.tw/terms-of-service>. Attention is drawn to the limitation of liability, indemnification and jurisdiction issues defined therein. Any holder of this document is advised that information contained hereon reflects the Company's findings at the time of its intervention only and within the limits of client's instruction, if any. The Company's sole responsibility is to its Client and this document does not exonerate parties to a transaction from exercising all their rights and obligations under the transaction documents. This document cannot be reproduced, except in full, without prior written approval of the Company. Any unauthorized alteration, forgery or falsification of the content or appearance of this document is unlawful and offenders may be prosecuted to the fullest extent of the law. Unless otherwise stated the results shown in this test report refer only to the sample(s) tested.

NAMICS CORPORATION

3993 NIGORIKAWA, KITA-KU, NIIGATA-CITY 950-3131, JAPAN

## Analytical flow chart - Phthalate

【Test method: IEC 62321-8】



This document is issued by the Company subject to its General Conditions of Service printed overleaf, available on request or accessible at <https://www.sgs.com.tw/terms-of-service> and, for electronic format documents, subject to Terms and Conditions for Electronic Documents at <https://www.sgs.com.tw/terms-of-service>. Attention is drawn to the limitation of liability, indemnification and jurisdiction issues defined therein. Any holder of this document is advised that information contained hereon reflects the Company's findings at the time of its intervention only and within the limits of client's instruction, if any. The Company's sole responsibility is to its Client and this document does not exonerate parties to a transaction from exercising all their rights and obligations under the transaction documents. This document cannot be reproduced, except in full, without prior written approval of the Company. Any unauthorized alteration, forgery or falsification of the content or appearance of this document is unlawful and offenders may be prosecuted to the fullest extent of the law. Unless otherwise stated the results shown in this test report refer only to the sample(s) tested.

## Test Report

No.: ETR21605807

Date: 06-Jul-2021

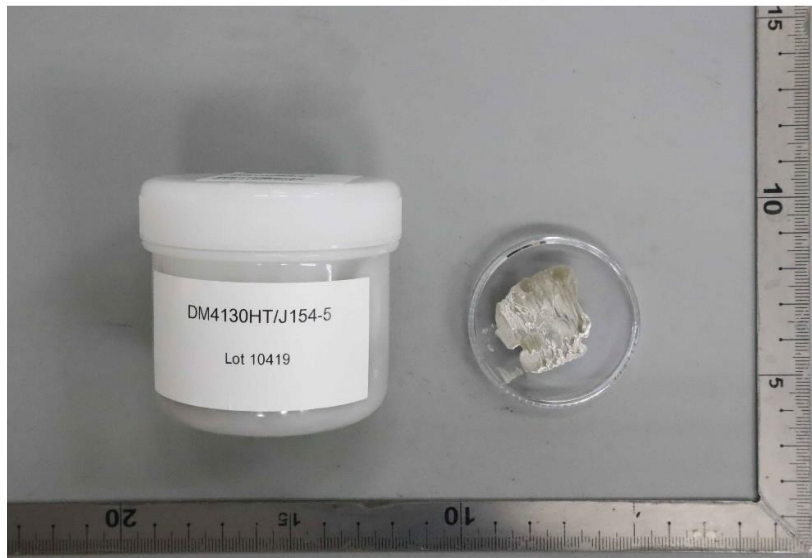
Page: 7 of 7

NAMICS CORPORATION

3993 NIGORIKAWA, KITA-KU, NIIGATA-CITY 950-3131, JAPAN

\* The tested sample / part is marked by an arrow if it's shown on the photo. \*

### ETR21605807



\*\* End of Report \*\*

This document is issued by the Company subject to its General Conditions of Service printed overleaf, available on request or accessible at <https://www.sgs.com.tw/terms-of-service> and, for electronic format documents, subject to Terms and Conditions for Electronic Documents at <https://www.sgs.com.tw/terms-of-service>. Attention is drawn to the limitation of liability, indemnification and jurisdiction issues defined therein. Any holder of this document is advised that information contained hereon reflects the Company's findings at the time of its intervention only and within the limits of client's instruction, if any. The Company's sole responsibility is to its Client and this document does not exonerate parties to a transaction from exercising all their rights and obligations under the transaction documents. This document cannot be reproduced, except in full, without prior written approval of the Company. Any unauthorized alteration, forgery or falsification of the content or appearance of this document is unlawful and offenders may be prosecuted to the fullest extent of the law. Unless otherwise stated the results shown in this test report refer only to the sample(s) tested.