

Test Report

No. : KA/2020/91568

Date : 2020/09/25

Page: 1 of 17

SUMITOMO BAKELITE CO., LTD.

20-7 KIYOHARA-KOGYODANCHI, UTSUNOMIYA-CITY, TOCHIGI-PREFECTURE, 321-3231 JAPAN

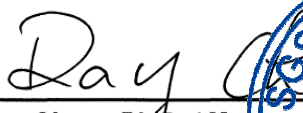
The following sample(s) was/were submitted and identified by/on behalf of the applicant as :

Sample Submitted By : SUMITOMO BAKELITE CO., LTD.
Sample Description : DIE ATTACH PASTE
Style/Item No. : CRM-1076WA
Sample Receiving Date : 2020/09/21
Testing Period : 2020/09/21 to 2020/09/25

=====
Test Requested : (1) As specified by client, with reference to RoHS 2011/65/EU Annex II and amending Directive (EU) 2015/863 to determine Cadmium, Lead, Mercury, Cr(VI), PBBs, PBDEs, DBP, BBP, DEHP, DIBP contents in the submitted sample(s).
(2) Please refer to next pages for the other item(s).

Test Result(s) : Please refer to next page(s).

Conclusion : (1) Based on the performed tests on submitted sample(s), the test results of Cadmium, Lead, Mercury, Cr(VI), PBBs, PBDEs, DBP, BBP, DEHP, DIBP comply with the limits as set by RoHS Directive (EU) 2015/863 amending Annex II to Directive 2011/65/EU.


Ray Chang Ph.D. / Manager
Signed for and on behalf of
SGS Taiwan Limited
Chemical Laboratory-Kaohsiung




PIN CODE: DE1E46B8

This document is issued by the Company subject to its General Conditions of Service printed overleaf, available on request or accessible at <https://www.sgs.com.tw/terms-of-service> and, for electronic format documents, subject to Terms and Conditions for Electronic Documents at <https://www.sgs.com.tw/terms-of-service>. Attention is drawn to the limitation of liability, indemnification and jurisdiction issues defined therein. Any holder of this document is advised that information contained hereon reflects the Company's findings at the time of its intervention only and within the limits of client's instruction, if any. The Company's sole responsibility is to its Client and this document does not exonerate parties to a transaction from exercising all their rights and obligations under the transaction documents. This document cannot be reproduced, except in full, without prior written approval of the Company. Any unauthorized alteration, forgery or falsification of the content or appearance of this document is unlawful and offenders may be prosecuted to the fullest extent of the law. Unless otherwise stated the results shown in this test report refer only to the sample(s) tested.

Test Report

No. : KA/2020/91568

Date : 2020/09/25

Page: 2 of 17

SUMITOMO BAKELITE CO., LTD.

20-7 KIYOHARA-KOGYODANCHI, UTSUNOMIYA-CITY, TOCHIGI-PREFECTURE, 321-3231 JAPAN

Test Result(s)

PART NAME NO.1 : SILVER GRAY DIE ATTACH PASTE

Test Item (s)	Unit	Method	MDL	Result	Limit	
				No.1		
Cadmium (Cd)	mg/kg	With reference to IEC 62321-5: 2013 and performed by ICP-OES.	2	n.d.	100	
Lead (Pb)	mg/kg	With reference to IEC 62321-5: 2013 and performed by ICP-OES.	2	n.d.	1000	
Mercury (Hg)	mg/kg	With reference to IEC 62321-4:2013+AMD1:2017 and performed by ICP-OES.	2	n.d.	1000	
Hexavalent Chromium Cr(VI)	mg/kg	With reference to IEC 62321-7-2:2017 and performed by UV-VIS.	8	n.d.	1000	
Sum of PBBs	mg/kg	With reference to IEC 62321-6:2015 and performed by GC/MS.	-	n.d.	1000	
Monobromobiphenyl	mg/kg		5	n.d.	-	
Dibromobiphenyl	mg/kg		5	n.d.	-	
Tribromobiphenyl	mg/kg		5	n.d.	-	
Tetrabromobiphenyl	mg/kg		5	n.d.	-	
Pentabromobiphenyl	mg/kg		5	n.d.	-	
Hexabromobiphenyl	mg/kg		5	n.d.	-	
Heptabromobiphenyl	mg/kg		5	n.d.	-	
Octabromobiphenyl	mg/kg		5	n.d.	-	
Nonabromobiphenyl	mg/kg		5	n.d.	-	
Decabromobiphenyl	mg/kg		5	n.d.	-	
Sum of PBDEs	mg/kg		With reference to IEC 62321-6:2015 and performed by GC/MS.	-	n.d.	1000
Monobromodiphenyl ether	mg/kg			5	n.d.	-
Dibromodiphenyl ether	mg/kg	5		n.d.	-	
Tribromodiphenyl ether	mg/kg	5		n.d.	-	
Tetrabromodiphenyl ether	mg/kg	5		n.d.	-	
Pentabromodiphenyl ether	mg/kg	5		n.d.	-	
Hexabromodiphenyl ether	mg/kg	5		n.d.	-	
Heptabromodiphenyl ether	mg/kg	5		n.d.	-	
Octabromodiphenyl ether	mg/kg	5		n.d.	-	
Nonabromodiphenyl ether	mg/kg	5		n.d.	-	
Decabromodiphenyl ether	mg/kg	5	n.d.	-		

This document is issued by the Company subject to its General Conditions of Service printed overleaf, available on request or accessible at <https://www.sgs.com.tw/terms-of-service> and, for electronic format documents, subject to Terms and Conditions for Electronic Documents at <https://www.sgs.com.tw/terms-of-service>. Attention is drawn to the limitation of liability, indemnification and jurisdiction issues defined therein. Any holder of this document is advised that information contained hereon reflects the Company's findings at the time of its intervention only and within the limits of client's instruction, if any. The Company's sole responsibility is to its Client and this document does not exonerate parties to a transaction from exercising all their rights and obligations under the transaction documents. This document cannot be reproduced, except in full, without prior written approval of the Company. Any unauthorized alteration, forgery or falsification of the content or appearance of this document is unlawful and offenders may be prosecuted to the fullest extent of the law. Unless otherwise stated the results shown in this test report refer only to the sample(s) tested.

Test Report

No. : KA/2020/91568

Date : 2020/09/25

Page: 3 of 17

SUMITOMO BAKELITE CO., LTD.

20-7 KIYOHARA-KOGYODANCHI, UTSUNOMIYA-CITY, TOCHIGI-PREFECTURE, 321-3231 JAPAN

Test Item (s)	Unit	Method	MDL	Result	Limit
				No.1	
Antimony (Sb)	mg/kg	With reference to US EPA 3052: 1996. Analysis was performed by ICP-OES.	2	n.d.	-
Beryllium (Be)	mg/kg	With reference to US EPA 3052: 1996. Analysis was performed by ICP-OES.	2	n.d.	-
Polychlorinated Biphenyls (PCBs)	mg/kg	With reference to US EPA 3550C: 2007. Analysis was performed by GC/MS.	0.5	n.d.	-
Polychlorinated Naphthalene (PCNs)	mg/kg	With reference to US EPA 3550C: 2007. Analysis was performed by GC/MS.	5	n.d.	-
Polychlorinated Terphenyls (PCTs)	mg/kg	With reference to US EPA 3550C: 2007. Analysis was performed by GC/MS.	0.5	n.d.	-
Alkanes, C10-13, chloro (Short Chain Chlorinated Paraffins) (CAS No.: 85535-84-8)	%	With reference to US EPA 3550C: 2007. Analysis was performed by GC/ECD.	0.01	n.d.	-
Halogen					
Halogen-Fluorine (F) (CAS No.: 14762-94-8)	mg/kg	With reference to BS EN 14582:2016. Analysis was performed by IC.	50	n.d.	-
Halogen-Chlorine (Cl) (CAS No.: 22537-15-1)	mg/kg	With reference to BS EN 14582:2016. Analysis was performed by IC.	50	n.d.	-
Halogen-Bromine (Br) (CAS No.: 10097-32-2)	mg/kg	With reference to BS EN 14582:2016. Analysis was performed by IC.	50	n.d.	-
Halogen-Iodine (I) (CAS No.: 14362-44-8)	mg/kg	With reference to BS EN 14582:2016. Analysis was performed by IC.	50	n.d.	-
Organic-tin compounds					
Tributyl Tin (TBT)	mg/kg	With reference to ISO 17353: 2004. Analysis was performed by GC/FPD.	0.03	n.d.	-
Triphenyl Tin (TphT)	mg/kg	With reference to ISO 17353: 2004. Analysis was performed by GC/FPD.	0.03	n.d.	-
Bis(tributyltin)oxide (TBTO) (CAS No.: 56-35-9)	mg/kg	With reference to ISO 17353: 2004. Analysis was performed by GC/FPD. Calculated from the result of Tributyl Tin (TBT).	0.03 (▲)	n.d.	-
Dibutyl Tin (DBT)	mg/kg	With reference to ISO 17353: 2004. Analysis was performed by GC/FPD.	0.03	n.d.	-
Diocetyl Tin (DOT)	mg/kg	With reference to ISO 17353: 2004. Analysis was performed by GC/FPD.	0.03	n.d.	-

This document is issued by the Company subject to its General Conditions of Service printed overleaf, available on request or accessible at <https://www.sgs.com.tw/terms-of-service> and, for electronic format documents, subject to Terms and Conditions for Electronic Documents at <https://www.sgs.com.tw/terms-of-service>. Attention is drawn to the limitation of liability, indemnification and jurisdiction issues defined therein. Any holder of this document is advised that information contained hereon reflects the Company's findings at the time of its intervention only and within the limits of client's instruction, if any. The Company's sole responsibility is to its Client and this document does not exonerate parties to a transaction from exercising all their rights and obligations under the transaction documents. This document cannot be reproduced, except in full, without prior written approval of the Company. Any unauthorized alteration, forgery or falsification of the content or appearance of this document is unlawful and offenders may be prosecuted to the fullest extent of the law. Unless otherwise stated the results shown in this test report refer only to the sample(s) tested.

Test Report

No. : KA/2020/91568

Date : 2020/09/25

Page: 4 of 17

SUMITOMO BAKELITE CO., LTD.

20-7 KIYOHARA-KOGYODANCHI, UTSUNOMIYA-CITY, TOCHIGI-PREFECTURE, 321-3231 JAPAN

Test Item (s)	Unit	Method	MDL	Result	Limit
				No.1	
PFOS and its salts (CAS No.: 1763-23-1 and its salts)	mg/kg	With reference to CEN/TS 15968 (2010). Analysis was performed by LC/MSMS.	0.01	n.d.	-
PFOA and its salts (CAS No.: 335-67-1 and its salts)	mg/kg	With reference to CEN/TS 15968 (2010). Analysis was performed by LC/MSMS.	0.01	n.d.	-
Phthalates					
BBP (Butyl Benzyl phthalate) (CAS No.: 85-68-7)	mg/kg	With reference to IEC 62321-8:2017. Analysis was performed by GC/MS.	50	n.d.	1000
DBP (Dibutyl phthalate) (CAS No.: 84-74-2)	mg/kg	With reference to IEC 62321-8:2017. Analysis was performed by GC/MS.	50	n.d.	1000
DEHP (Di- (2-ethylhexyl) phthalate) (CAS No.: 117-81-7)	mg/kg	With reference to IEC 62321-8:2017. Analysis was performed by GC/MS.	50	n.d.	1000
DIBP (Di-isobutyl phthalate) (CAS No.: 84-69-5)	mg/kg	With reference to IEC 62321-8:2017. Analysis was performed by GC/MS.	50	n.d.	1000
DIDP (Di-isodecyl phthalate) (CAS No.: 26761-40-0; 68515-49-1)	mg/kg	With reference to IEC 62321-8:2017. Analysis was performed by GC/MS.	50	n.d.	-
DINP (Di-isononyl phthalate) (CAS No.: 28553-12-0; 68515-48-0)	mg/kg	With reference to IEC 62321-8:2017. Analysis was performed by GC/MS.	50	n.d.	-
DNOP (Di-n-octyl phthalate) (CAS No.: 117-84-0)	mg/kg	With reference to IEC 62321-8:2017. Analysis was performed by GC/MS.	50	n.d.	-
Hexabromocyclododecane (HBCDD) and all major diastereoisomers identified (α -HBCDD, β -HBCDD, γ -HBCDD) (CAS No.: 25637-99-4 and 3194-55-6 (134237-51-7, 134237-50-6, 134237-52-8))	mg/kg	With reference to IEC 62321: 2008. Analysis was performed by GC/MS.	5	n.d.	-
PVC	**	Analysis was performed by FTIR and FLAME Test.	-	Negative	-
Arsenic (As)	mg/kg	With reference to US EPA 3052: 1996. Analysis was performed by ICP-OES.	2	n.d.	-

This document is issued by the Company subject to its General Conditions of Service printed overleaf, available on request or accessible at <https://www.sgs.com.tw/terms-of-service> and, for electronic format documents, subject to Terms and Conditions for Electronic Documents at <https://www.sgs.com.tw/terms-of-service>. Attention is drawn to the limitation of liability, indemnification and jurisdiction issues defined therein. Any holder of this document is advised that information contained hereon reflects the Company's findings at the time of its intervention only and within the limits of client's instruction, if any. The Company's sole responsibility is to its Client and this document does not exonerate parties to a transaction from exercising all their rights and obligations under the transaction documents. This document cannot be reproduced, except in full, without prior written approval of the Company. Any unauthorized alteration, forgery or falsification of the content or appearance of this document is unlawful and offenders may be prosecuted to the fullest extent of the law. Unless otherwise stated the results shown in this test report refer only to the sample(s) tested.

Test Report

No. : KA/2020/91568

Date : 2020/09/25

Page: 5 of 17

SUMITOMO BAKELITE CO., LTD.

20-7 KIYOHARA-KOGYODANCHI, UTSUNOMIYA-CITY, TOCHIGI-PREFECTURE, 321-3231 JAPAN

Note :

1. mg/kg = ppm ; 0.1wt% = 1000ppm
2. n.d. = Not Detected
3. MDL = Method Detection Limit
4. " - " = Not Regulated
5. ** = Qualitative analysis (No Unit)
6. Negative = Undetectable / Positive = Detectable
7. (▲) : The MDL was evaluated for element / tested substance.

Conversion Formula : $AX = A \times F$

AX	A	F
Bis(tributyltin)oxide (TBTO)	Tributyl Tin (TBT)	1.024

Parameter Conversion Table: https://twap.sgs.com/sgsrsts/chn/download-REACH_tw.asp

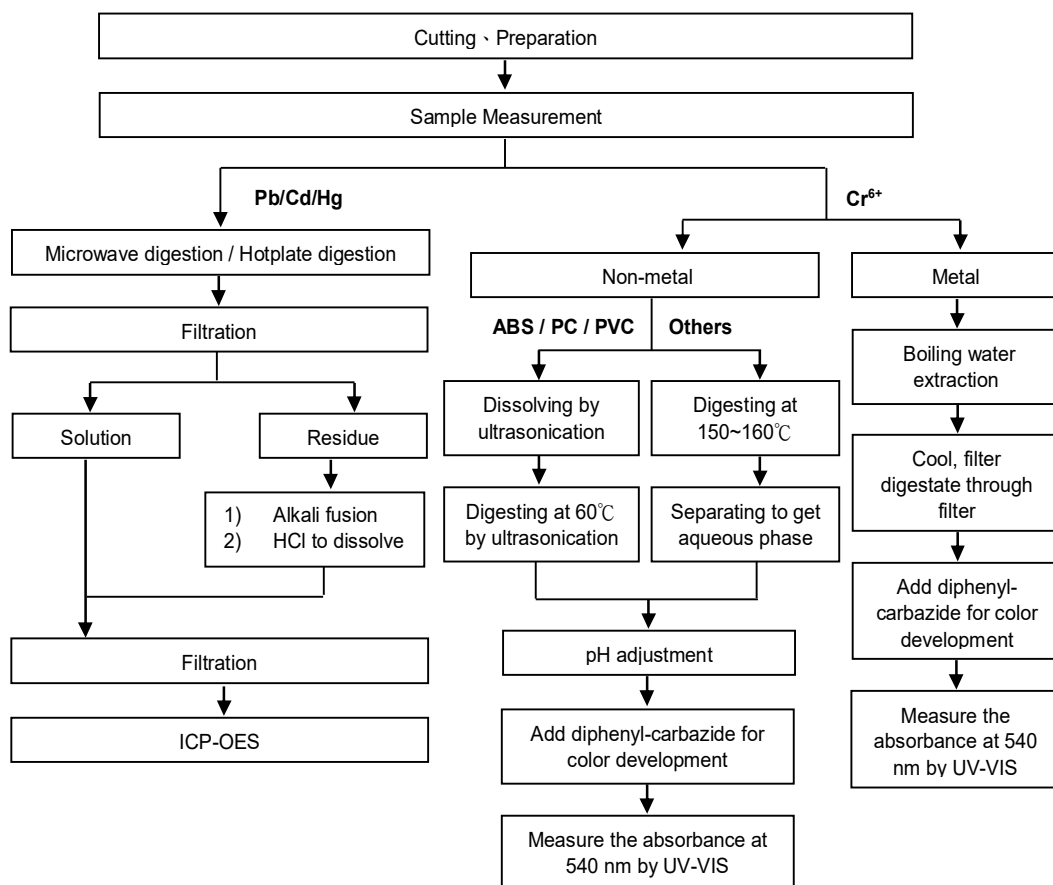
8. PFOS and its salts including CAS No.: 29081-56-9, 2795-39-3, 29457-72-5, 70225-14-8, 56773-42-3, 251099-16-8, 307-35-7.
9. PFOA and its salts including CAS No.: 3825-26-1, 335-95-5, 2395-00-8, 335-93-3, 335-66-0.
10. The statement of compliance conformity is based on comparison of testing results and limits.

SUMITOMO BAKELITE CO., LTD.

20-7 KIYOHARA-KOGYODANCHI, UTSUNOMIYA-CITY, TOCHIGI-PREFECTURE, 321-3231 JAPAN

Analytical flow chart of Heavy Metal

These samples were dissolved totally by pre-conditioning method according to below flow chart. (Cr⁶⁺ test method excluded)

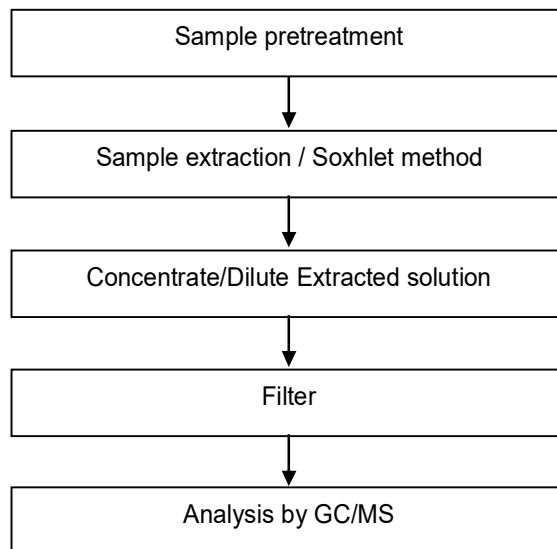


This document is issued by the Company subject to its General Conditions of Service printed overleaf, available on request or accessible at <https://www.sgs.com.tw/terms-of-service> and, for electronic format documents, subject to Terms and Conditions for Electronic Documents at <https://www.sgs.com.tw/terms-of-service>. Attention is drawn to the limitation of liability, indemnification and jurisdiction issues defined therein. Any holder of this document is advised that information contained hereon reflects the Company's findings at the time of its intervention only and within the limits of client's instruction, if any. The Company's sole responsibility is to its Client and this document does not exonerate parties to a transaction from exercising all their rights and obligations under the transaction documents. This document cannot be reproduced, except in full, without prior written approval of the Company. Any unauthorized alteration, forgery or falsification of the content or appearance of this document is unlawful and offenders may be prosecuted to the fullest extent of the law. Unless otherwise stated the results shown in this test report refer only to the sample(s) tested.

SUMITOMO BAKELITE CO., LTD.

20-7 KIYOHARA-KOGYODANCHI, UTSUNOMIYA-CITY, TOCHIGI-PREFECTURE, 321-3231 JAPAN

PBB/PBDE analytical FLOW CHART



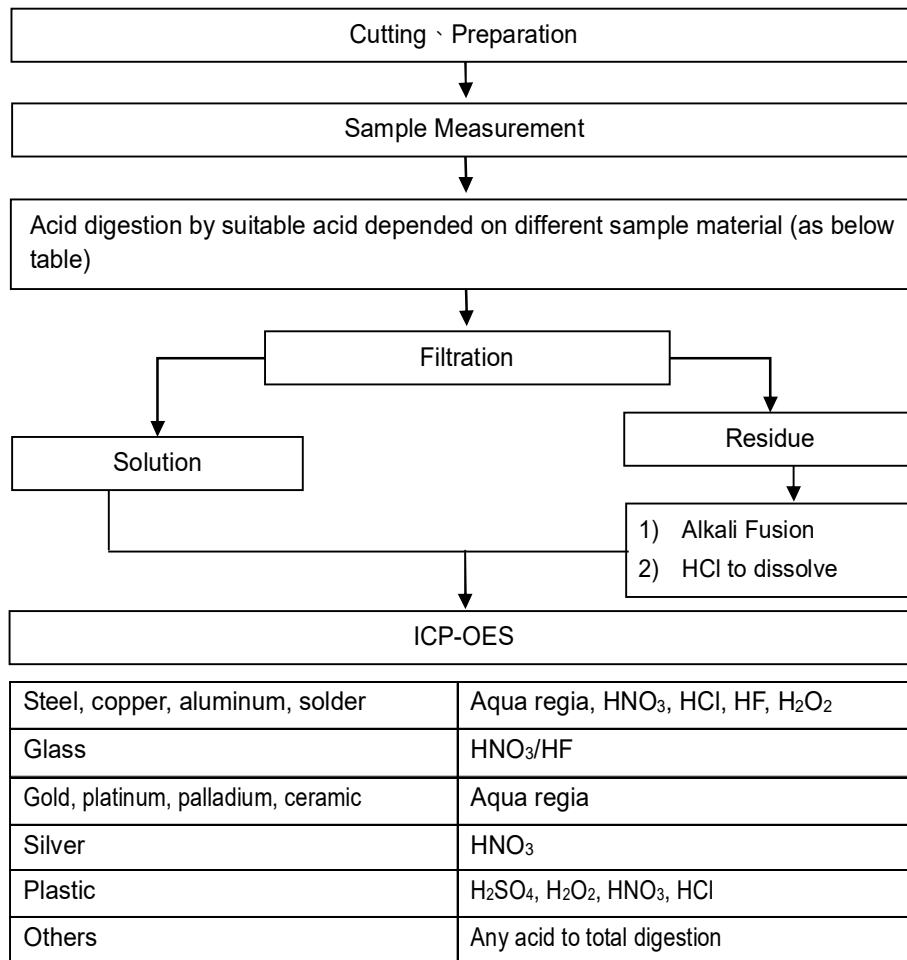
This document is issued by the Company subject to its General Conditions of Service printed overleaf, available on request or accessible at <https://www.sgs.com.tw/terms-of-service> and, for electronic format documents, subject to Terms and Conditions for Electronic Documents at <https://www.sgs.com.tw/terms-of-service>. Attention is drawn to the limitation of liability, indemnification and jurisdiction issues defined therein. Any holder of this document is advised that information contained hereon reflects the Company's findings at the time of its intervention only and within the limits of client's instruction, if any. The Company's sole responsibility is to its Client and this document does not exonerate parties to a transaction from exercising all their rights and obligations under the transaction documents. This document cannot be reproduced, except in full, without prior written approval of the Company. Any unauthorized alteration, forgery or falsification of the content or appearance of this document is unlawful and offenders may be prosecuted to the fullest extent of the law. Unless otherwise stated the results shown in this test report refer only to the sample(s) tested.

SUMITOMO BAKELITE CO., LTD.

20-7 KIYOHARA-KOGYODANCHI, UTSUNOMIYA-CITY, TOCHIGI-PREFECTURE, 321-3231 JAPAN

Flow Chart of digestion for the elements analysis performed by ICP-OES

These samples were dissolved totally by pre-conditioning method according to below flow chart.



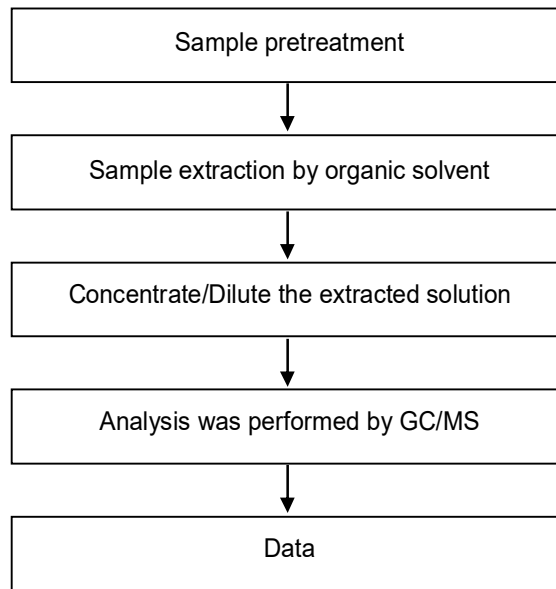
SUMITOMO BAKELITE CO., LTD.

20-7 KIYOHARA-KOGYODANCHI, UTSUNOMIYA-CITY, TOCHIGI-PREFECTURE, 321-3231 JAPAN

Chlorinated Flame retardant analytical flow chart

【Reference method: US EPA 3550C】

【Test Items: PCBs, PCNs, PCTs】

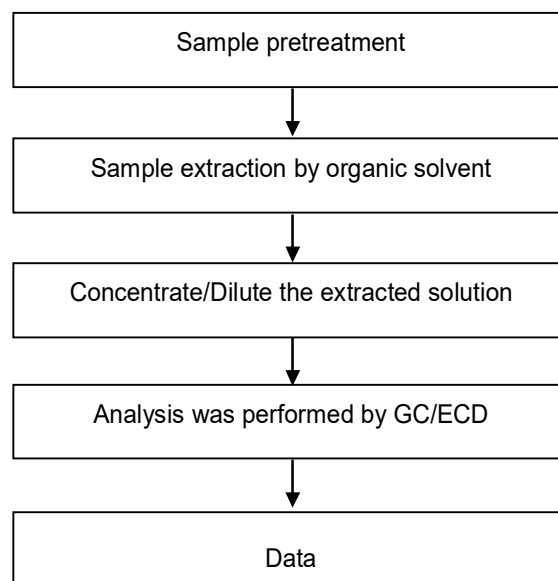


SUMITOMO BAKELITE CO., LTD.

20-7 KIYOHARA-KOGYODANCHI, UTSUNOMIYA-CITY, TOCHIGI-PREFECTURE, 321-3231 JAPAN

Analytical flow chart - Chlorinated Paraffins

【Reference method: US EPA 3550C】

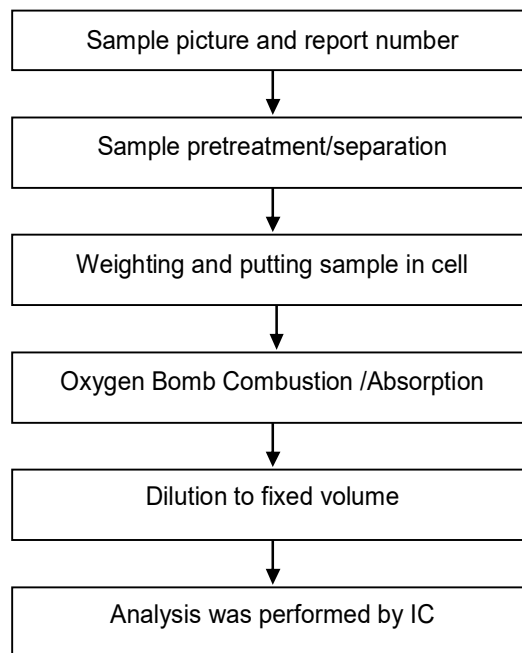


This document is issued by the Company subject to its General Conditions of Service printed overleaf, available on request or accessible at <https://www.sgs.com.tw/terms-of-service> and, for electronic format documents, subject to Terms and Conditions for Electronic Documents at <https://www.sgs.com.tw/terms-of-service>. Attention is drawn to the limitation of liability, indemnification and jurisdiction issues defined therein. Any holder of this document is advised that information contained hereon reflects the Company's findings at the time of its intervention only and within the limits of client's instruction, if any. The Company's sole responsibility is to its Client and this document does not exonerate parties to a transaction from exercising all their rights and obligations under the transaction documents. This document cannot be reproduced, except in full, without prior written approval of the Company. Any unauthorized alteration, forgery or falsification of the content or appearance of this document is unlawful and offenders may be prosecuted to the fullest extent of the law. Unless otherwise stated the results shown in this test report refer only to the sample(s) tested.

SUMITOMO BAKELITE CO., LTD.

20-7 KIYOHARA-KOGYODANCHI, UTSUNOMIYA-CITY, TOCHIGI-PREFECTURE, 321-3231 JAPAN

Analytical flow chart of Halogen

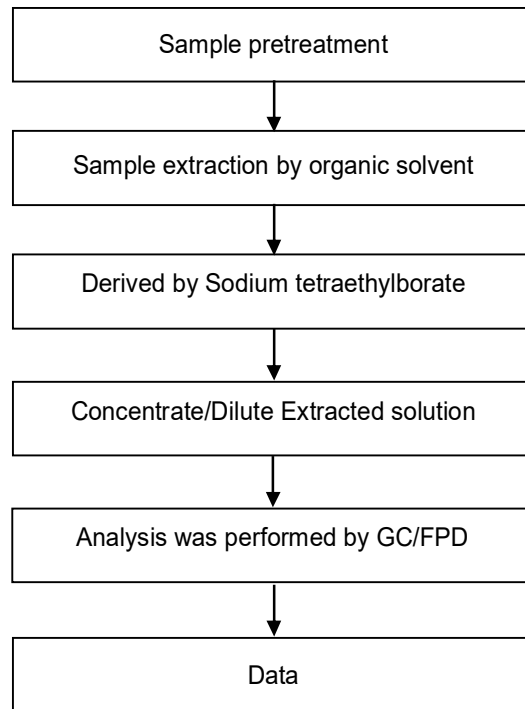


This document is issued by the Company subject to its General Conditions of Service printed overleaf, available on request or accessible at <https://www.sgs.com.tw/terms-of-service> and, for electronic format documents, subject to Terms and Conditions for Electronic Documents at <https://www.sgs.com.tw/terms-of-service>. Attention is drawn to the limitation of liability, indemnification and jurisdiction issues defined therein. Any holder of this document is advised that information contained hereon reflects the Company's findings at the time of its intervention only and within the limits of client's instruction, if any. The Company's sole responsibility is to its Client and this document does not exonerate parties to a transaction from exercising all their rights and obligations under the transaction documents. This document cannot be reproduced, except in full, without prior written approval of the Company. Any unauthorized alteration, forgery or falsification of the content or appearance of this document is unlawful and offenders may be prosecuted to the fullest extent of the law. Unless otherwise stated the results shown in this test report refer only to the sample(s) tested.

SUMITOMO BAKELITE CO., LTD.

20-7 KIYOHARA-KOGYODANCHI, UTSUNOMIYA-CITY, TOCHIGI-PREFECTURE, 321-3231 JAPAN

Analytical flow chart of Organic-Tin

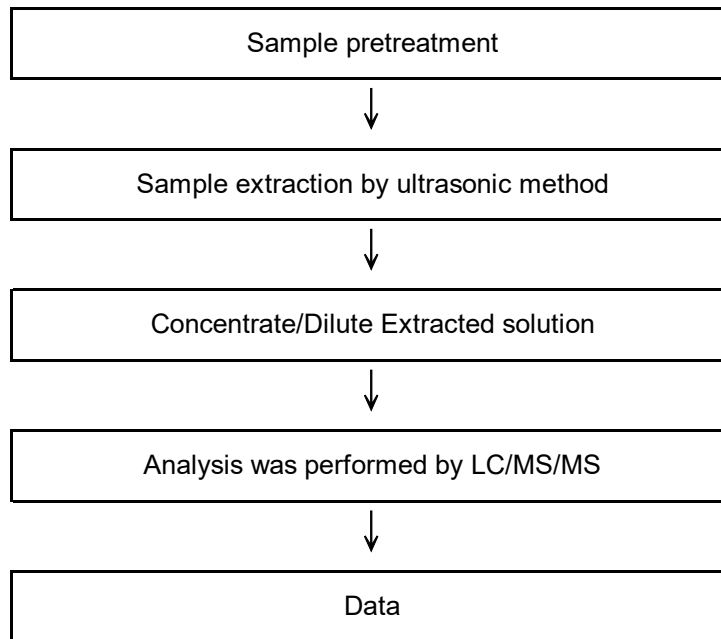


This document is issued by the Company subject to its General Conditions of Service printed overleaf, available on request or accessible at <https://www.sgs.com.tw/terms-of-service> and, for electronic format documents, subject to Terms and Conditions for Electronic Documents at <https://www.sgs.com.tw/terms-of-service>. Attention is drawn to the limitation of liability, indemnification and jurisdiction issues defined therein. Any holder of this document is advised that information contained hereon reflects the Company's findings at the time of its intervention only and within the limits of client's instruction, if any. The Company's sole responsibility is to its Client and this document does not exonerate parties to a transaction from exercising all their rights and obligations under the transaction documents. This document cannot be reproduced, except in full, without prior written approval of the Company. Any unauthorized alteration, forgery or falsification of the content or appearance of this document is unlawful and offenders may be prosecuted to the fullest extent of the law. Unless otherwise stated the results shown in this test report refer only to the sample(s) tested.

SUMITOMO BAKELITE CO., LTD.

20-7 KIYOHARA-KOGYODANCHI, UTSUNOMIYA-CITY, TOCHIGI-PREFECTURE, 321-3231 JAPAN

Analytical flow chart of PFOA/PFOS



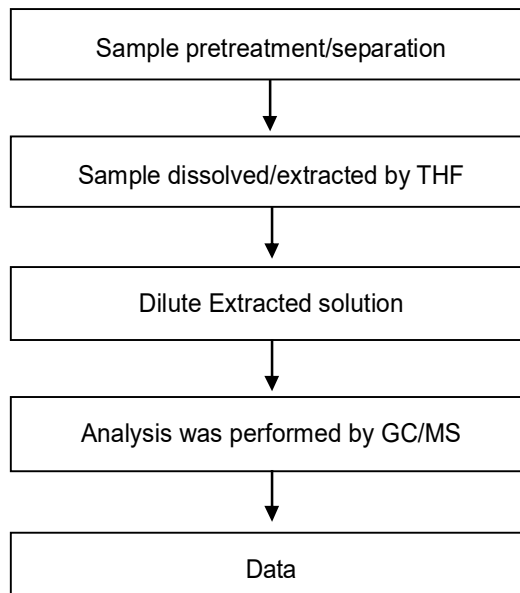
This document is issued by the Company subject to its General Conditions of Service printed overleaf, available on request or accessible at <https://www.sgs.com.tw/terms-of-service> and, for electronic format documents, subject to Terms and Conditions for Electronic Documents at <https://www.sgs.com.tw/terms-of-service>. Attention is drawn to the limitation of liability, indemnification and jurisdiction issues defined therein. Any holder of this document is advised that information contained hereon reflects the Company's findings at the time of its intervention only and within the limits of client's instruction, if any. The Company's sole responsibility is to its Client and this document does not exonerate parties to a transaction from exercising all their rights and obligations under the transaction documents. This document cannot be reproduced, except in full, without prior written approval of the Company. Any unauthorized alteration, forgery or falsification of the content or appearance of this document is unlawful and offenders may be prosecuted to the fullest extent of the law. Unless otherwise stated the results shown in this test report refer only to the sample(s) tested.

SUMITOMO BAKELITE CO., LTD.

20-7 KIYOHARA-KOGYODANCHI, UTSUNOMIYA-CITY, TOCHIGI-PREFECTURE, 321-3231 JAPAN

Analytical flow chart of phthalate content

【Test method: IEC 62321-8】

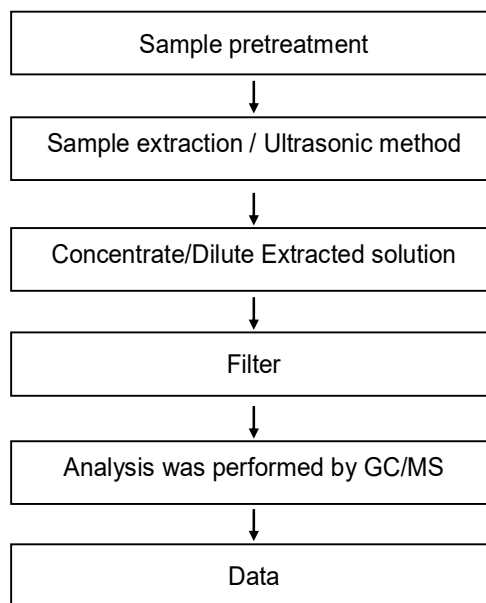


This document is issued by the Company subject to its General Conditions of Service printed overleaf, available on request or accessible at <https://www.sgs.com.tw/terms-of-service> and, for electronic format documents, subject to Terms and Conditions for Electronic Documents at <https://www.sgs.com.tw/terms-of-service>. Attention is drawn to the limitation of liability, indemnification and jurisdiction issues defined therein. Any holder of this document is advised that information contained hereon reflects the Company's findings at the time of its intervention only and within the limits of client's instruction, if any. The Company's sole responsibility is to its Client and this document does not exonerate parties to a transaction from exercising all their rights and obligations under the transaction documents. This document cannot be reproduced, except in full, without prior written approval of the Company. Any unauthorized alteration, forgery or falsification of the content or appearance of this document is unlawful and offenders may be prosecuted to the fullest extent of the law. Unless otherwise stated the results shown in this test report refer only to the sample(s) tested.

SUMITOMO BAKELITE CO., LTD.

20-7 KIYOHARA-KOGYODANCHI, UTSUNOMIYA-CITY, TOCHIGI-PREFECTURE, 321-3231 JAPAN

HBCDD analytical flow chart

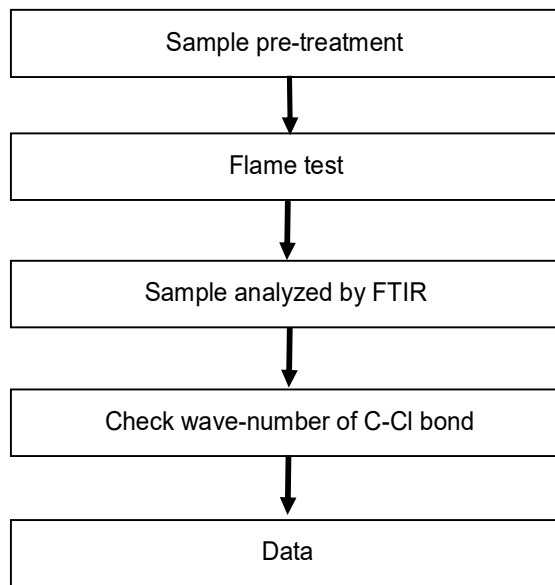


This document is issued by the Company subject to its General Conditions of Service printed overleaf, available on request or accessible at <https://www.sgs.com.tw/terms-of-service> and, for electronic format documents, subject to Terms and Conditions for Electronic Documents at <https://www.sgs.com.tw/terms-of-service>. Attention is drawn to the limitation of liability, indemnification and jurisdiction issues defined therein. Any holder of this document is advised that information contained hereon reflects the Company's findings at the time of its intervention only and within the limits of client's instruction, if any. The Company's sole responsibility is to its Client and this document does not exonerate parties to a transaction from exercising all their rights and obligations under the transaction documents. This document cannot be reproduced, except in full, without prior written approval of the Company. Any unauthorized alteration, forgery or falsification of the content or appearance of this document is unlawful and offenders may be prosecuted to the fullest extent of the law. Unless otherwise stated the results shown in this test report refer only to the sample(s) tested.

SUMITOMO BAKELITE CO., LTD.

20-7 KIYOHARA-KOGYODANCHI, UTSUNOMIYA-CITY, TOCHIGI-PREFECTURE, 321-3231 JAPAN

Analysis flow chart for determination of PVC in polymer material



This document is issued by the Company subject to its General Conditions of Service printed overleaf, available on request or accessible at <https://www.sgs.com.tw/terms-of-service> and, for electronic format documents, subject to Terms and Conditions for Electronic Documents at <https://www.sgs.com.tw/terms-of-service>. Attention is drawn to the limitation of liability, indemnification and jurisdiction issues defined therein. Any holder of this document is advised that information contained hereon reflects the Company's findings at the time of its intervention only and within the limits of client's instruction, if any. The Company's sole responsibility is to its Client and this document does not exonerate parties to a transaction from exercising all their rights and obligations under the transaction documents. This document cannot be reproduced, except in full, without prior written approval of the Company. Any unauthorized alteration, forgery or falsification of the content or appearance of this document is unlawful and offenders may be prosecuted to the fullest extent of the law. Unless otherwise stated the results shown in this test report refer only to the sample(s) tested.

Test Report

No. : KA/2020/91568

Date : 2020/09/25

Page: 17 of 17

SUMITOMO BAKELITE CO., LTD.

20-7 KIYOHARA-KOGYODANCHI, UTSUNOMIYA-CITY, TOCHIGI-PREFECTURE, 321-3231 JAPAN

* The tested sample / part is marked by an arrow if it's shown on the photo. *

KA/2020/91568



** End of Report **

This document is issued by the Company subject to its General Conditions of Service printed overleaf, available on request or accessible at <https://www.sgs.com.tw/terms-of-service> and, for electronic format documents, subject to Terms and Conditions for Electronic Documents at <https://www.sgs.com.tw/terms-of-service>. Attention is drawn to the limitation of liability, indemnification and jurisdiction issues defined therein. Any holder of this document is advised that information contained hereon reflects the Company's findings at the time of its intervention only and within the limits of client's instruction, if any. The Company's sole responsibility is to its Client and this document does not exonerate parties to a transaction from exercising all their rights and obligations under the transaction documents. This document cannot be reproduced, except in full, without prior written approval of the Company. Any unauthorized alteration, forgery or falsification of the content or appearance of this document is unlawful and offenders may be prosecuted to the fullest extent of the law. Unless otherwise stated the results shown in this test report refer only to the sample(s) tested.