

Test Report

No.: ETR21306605

Date: 01-Apr-2021

Page: 1 of 4

SHOWA DENKO MATERIALS CO., LTD.
1500 OGAWA, CHIKUSEI-SHI IBARAKI, 308-8521, JAPAN

The following sample(s) was/were submitted and identified by/on behalf of the applicant as:

Sample Submitted By : SHOWA DENKO MATERIALS CO., LTD.
Sample Name : GLASS EPOXY PREPREG / COPPER CLAD LAMINATES WITHOUT COPPER
(PLASTIC PART OF MCL)
Style/Item No. : GEA-705G / MCL-E-705G PLASTIC PART / GEA-705G(L) /
MCL-E-705G(L) PLASTIC PART / MCL-E-705G(LH) PLASTIC PART /
MCL-E-705G(X) PLASTIC PART / MCL-E-705G(W) PLASTIC PART /
MCL-E-705G(WH) PLASTIC PART

Sample Receiving Date : 25-Mar-2021
Testing Period : 25-Mar-2021 to 01-Apr-2021

Test Requested : As specified by client, with reference to RoHS 2011/65/EU Annex II and amending Directive (EU) 2015/863 to determine DBP, BBP, DEHP, DIBP contents in the submitted sample(s).

Test Results : Please refer to following pages.


Troy Chang, Manager
Signed for and on behalf of
SGS TAIWAN LTD.
Chemical Laboratory - Taipei



PIN CODE: 70D4A5E8

This document is issued by the Company subject to its General Conditions of Service printed overleaf, available on request or accessible at <https://www.sgs.com.tw/terms-of-service> and, for electronic format documents, subject to Terms and Conditions for Electronic Documents at <https://www.sgs.com.tw/terms-of-service>. Attention is drawn to the limitation of liability, indemnification and jurisdiction issues defined therein. Any holder of this document is advised that information contained hereon reflects the Company's findings at the time of its intervention only and within the limits of client's instruction, if any. The Company's sole responsibility is to its Client and this document does not exonerate parties to a transaction from exercising all their rights and obligations under the transaction documents. This document cannot be reproduced, except in full, without prior written approval of the Company. Any unauthorized alteration, forgery or falsification of the content or appearance of this document is unlawful and offenders may be prosecuted to the fullest extent of the law. Unless otherwise stated the results shown in this test report refer only to the sample(s) tested.

Test Report

No.: ETR21306605

Date: 01-Apr-2021

Page: 2 of 4

SHOWA DENKO MATERIALS CO., LTD.
1500 OGAWA, CHIKUSEI-SHI IBARAKI, 308-8521, JAPAN

Test Part Description

No.1 : YELLOW SHEET

Test Result(s)

| Test Item(s) | Method | Unit | MDL | Result |
|--|---|-------|-----|--------|
| | | | | No.1 |
| Butyl benzyl phthalate (BBP) (CAS No.: 85-68-7) | With reference to IEC 62321-8: 2017, analysis was performed by GC/MS. | mg/kg | 50 | n.d. |
| Dibutyl phthalate (DBP) (CAS No.: 84-74-2) | | mg/kg | 50 | n.d. |
| Di-(2-ethylhexyl) phthalate (DEHP) (CAS No.: 117-81-7) | | mg/kg | 50 | n.d. |
| Diisobutyl phthalate (DIBP) (CAS No.: 84-69-5) | | mg/kg | 50 | n.d. |

Note :

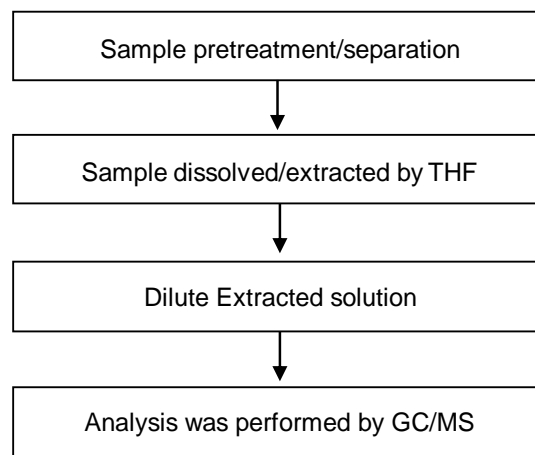
1. mg/kg = ppm ; 0.1wt% = 1000ppm
2. MDL = Method Detection Limit
3. n.d. = Not Detected (Less than MDL)

This document is issued by the Company subject to its General Conditions of Service printed overleaf, available on request or accessible at <https://www.sgs.com.tw/terms-of-service> and, for electronic format documents, subject to Terms and Conditions for Electronic Documents at <https://www.sgs.com.tw/terms-of-service>. Attention is drawn to the limitation of liability, indemnification and jurisdiction issues defined therein. Any holder of this document is advised that information contained hereon reflects the Company's findings at the time of its intervention only and within the limits of client's instruction, if any. The Company's sole responsibility is to its Client and this document does not exonerate parties to a transaction from exercising all their rights and obligations under the transaction documents. This document cannot be reproduced, except in full, without prior written approval of the Company. Any unauthorized alteration, forgery or falsification of the content or appearance of this document is unlawful and offenders may be prosecuted to the fullest extent of the law. Unless otherwise stated the results shown in this test report refer only to the sample(s) tested.

SHOWA DENKO MATERIALS CO., LTD.

1500 OGAWA, CHIKUSEI-SHI IBARAKI, 308-8521, JAPAN

Analytical flow chart - Phthalate

【Test method: IEC 62321-8】

This document is issued by the Company subject to its General Conditions of Service printed overleaf, available on request or accessible at <https://www.sgs.com.tw/terms-of-service> and, for electronic format documents, subject to Terms and Conditions for Electronic Documents at <https://www.sgs.com.tw/terms-of-service>. Attention is drawn to the limitation of liability, indemnification and jurisdiction issues defined therein. Any holder of this document is advised that information contained hereon reflects the Company's findings at the time of its intervention only and within the limits of client's instruction, if any. The Company's sole responsibility is to its Client and this document does not exonerate parties to a transaction from exercising all their rights and obligations under the transaction documents. This document cannot be reproduced, except in full, without prior written approval of the Company. Any unauthorized alteration, forgery or falsification of the content or appearance of this document is unlawful and offenders may be prosecuted to the fullest extent of the law. Unless otherwise stated the results shown in this test report refer only to the sample(s) tested.

Test Report

No.: ETR21306605

Date: 01-Apr-2021

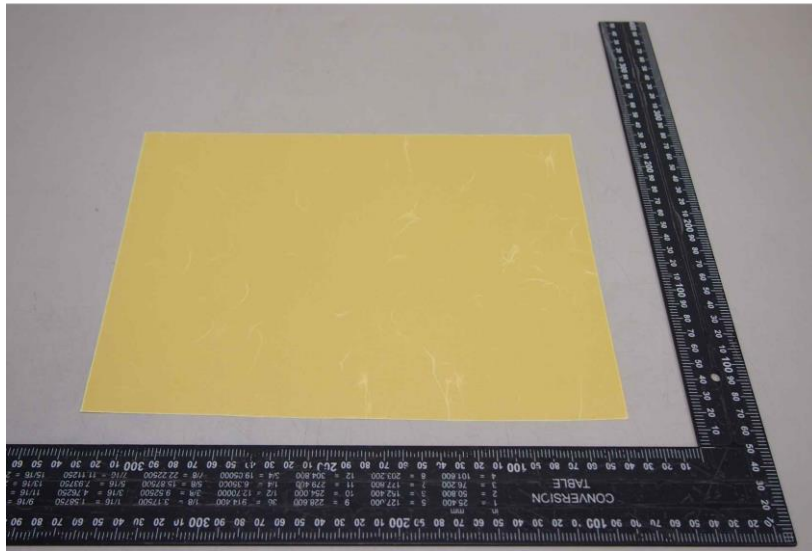
Page: 4 of 4

SHOWA DENKO MATERIALS CO., LTD.

1500 OGAWA, CHIKUSEI-SHI IBARAKI, 308-8521, JAPAN

* The tested sample / part is marked by an arrow if it's shown on the photo. *

ETR21306605



** End of Report **

This document is issued by the Company subject to its General Conditions of Service printed overleaf, available on request or accessible at <https://www.sgs.com.tw/terms-of-service> and, for electronic format documents, subject to Terms and Conditions for Electronic Documents at <https://www.sgs.com.tw/terms-of-service>. Attention is drawn to the limitation of liability, indemnification and jurisdiction issues defined therein. Any holder of this document is advised that information contained hereon reflects the Company's findings at the time of its intervention only and within the limits of client's instruction, if any. The Company's sole responsibility is to its Client and this document does not exonerate parties to a transaction from exercising all their rights and obligations under the transaction documents. This document cannot be reproduced, except in full, without prior written approval of the Company. Any unauthorized alteration, forgery or falsification of the content or appearance of this document is unlawful and offenders may be prosecuted to the fullest extent of the law. Unless otherwise stated the results shown in this test report refer only to the sample(s) tested.