



Test Report

No.: EKR21901163

Date: 24-Sep-2021

Page: 1 of 16

PANASONIC CORPORATION
60, KITASHINKAI, HASEDASHI, YOKKAICHI, MIE, 510-8560, JAPAN

The following sample(s) was/were submitted and identified by/on behalf of the applicant as:

Sample Submitted By : PANASONIC CORPORATION
Sample Name : EPOXY MOLDING COMPOUND
Style/Item No. : CV8715 SERIES

=====
Sample Receiving Date : 15-Sep-2021
Testing Period : 15-Sep-2021 to 24-Sep-2021

Test Requested : (1) As specified by client, with reference to RoHS 2011/65/EU Annex II and amending Directive (EU) 2015/863 to determine Cadmium, Lead, Mercury, Cr(VI), PBBs, PBDEs, DBP, BBP, DEHP, DIBP contents in the submitted sample(s).
(2) Please refer to next pages for the other item(s).

Test Results : Please refer to following pages.

Day Chang
Ray Chang, Ph.D./Department Manager
Signed for and on behalf of
SGS TAIWAN LTD.
Chemical Laboratory-Kaohsiung



This document is issued by the Company subject to its General Conditions of Service printed overleaf, available on request or accessible at <https://www.sgs.com.tw/terms-of-service> and, for electronic format documents, subject to Terms and Conditions for Electronic Documents at <https://www.sgs.com.tw/terms-of-service>. Attention is drawn to the limitation of liability, indemnification and jurisdiction issues defined therein. Any holder of this document is advised that information contained hereon reflects the Company's findings at the time of its intervention only and within the limits of client's instruction, if any. The Company's sole responsibility is to its Client and this document does not exonerate parties to a transaction from exercising all their rights and obligations under the transaction documents. This document cannot be reproduced, except in full, without prior written approval of the Company. Any unauthorized alteration, forgery or falsification of the content or appearance of this document is unlawful and offenders may be prosecuted to the fullest extent of the law. Unless otherwise stated the results shown in this test report refer only to the sample(s) tested.

Test Report

No.: EKR21901163

Date: 24-Sep-2021

Page: 2 of 16

PANASONIC CORPORATION

60, KITASHINKAI, HASEDASHI, YOKKAICHI, MIE, 510-8560, JAPAN

Test Part Description

No.1 : BLACK LUMP

Test Result(s)

| Test Item(s) | Method | Unit | MDL | Result |
|--|---|-------|------|--------|
| | | | | No.1 |
| Cadmium (Cd) (CAS No.: 7440-43-9) | With reference to IEC 62321-5: 2013, analysis was performed by ICP-OES. | mg/kg | 2 | n.d. |
| Lead (Pb) (CAS No.: 7439-92-1) | With reference to IEC 62321-5: 2013, analysis was performed by ICP-OES. | mg/kg | 2 | n.d. |
| Mercury (Hg) (CAS No.: 7439-97-6) | With reference to IEC 62321-4: 2013+ AMD1: 2017, analysis was performed by ICP-OES. | mg/kg | 2 | n.d. |
| Hexavalent Chromium Cr(VI) (CAS No.: 18540-29-9) | With reference to IEC 62321-7-2: 2017, analysis was performed by UV-VIS. | mg/kg | 8 | n.d. |
| Monobromobiphenyl | With reference to IEC 62321-6: 2015, analysis was performed by GC/MS. | mg/kg | 5 | n.d. |
| Dibromobiphenyl | | mg/kg | 5 | n.d. |
| Tribromobiphenyl | | mg/kg | 5 | n.d. |
| Tetrabromobiphenyl | | mg/kg | 5 | n.d. |
| Pentabromobiphenyl | | mg/kg | 5 | n.d. |
| Hexabromobiphenyl | | mg/kg | 5 | n.d. |
| Heptabromobiphenyl | | mg/kg | 5 | n.d. |
| Octabromobiphenyl | | mg/kg | 5 | n.d. |
| Nonabromobiphenyl | | mg/kg | 5 | n.d. |
| Decabromobiphenyl | | mg/kg | 5 | n.d. |
| Sum of PBBs | | mg/kg | - | n.d. |
| Monobromodiphenyl ether | | mg/kg | 5 | n.d. |
| Dibromodiphenyl ether | | mg/kg | 5 | n.d. |
| Tribromodiphenyl ether | | mg/kg | 5 | n.d. |
| Tetrabromodiphenyl ether | | mg/kg | 5 | n.d. |
| Pentabromodiphenyl ether | | mg/kg | 5 | n.d. |
| Hexabromodiphenyl ether | | mg/kg | 5 | n.d. |
| Heptabromodiphenyl ether | | mg/kg | 5 | n.d. |
| Octabromodiphenyl ether | | mg/kg | 5 | n.d. |
| Nonabromodiphenyl ether | | mg/kg | 5 | n.d. |
| Decabromodiphenyl ether | | mg/kg | 5 | n.d. |
| Sum of PBDEs | mg/kg | - | n.d. | |

This document is issued by the Company subject to its General Conditions of Service printed overleaf, available on request or accessible at <https://www.sgs.com.tw/terms-of-service> and, for electronic format documents, subject to Terms and Conditions for Electronic Documents at <https://www.sgs.com.tw/terms-of-service>. Attention is drawn to the limitation of liability, indemnification and jurisdiction issues defined therein. Any holder of this document is advised that information contained hereon reflects the Company's findings at the time of its intervention only and within the limits of client's instruction, if any. The Company's sole responsibility is to its Client and this document does not exonerate parties to a transaction from exercising all their rights and obligations under the transaction documents. This document cannot be reproduced, except in full, without prior written approval of the Company. Any unauthorized alteration, forgery or falsification of the content or appearance of this document is unlawful and offenders may be prosecuted to the fullest extent of the law. Unless otherwise stated the results shown in this test report refer only to the sample(s) tested.

Test Report

No.: EKR21901163

Date: 24-Sep-2021

Page: 3 of 16

PANASONIC CORPORATION

60, KITASHINKAI, HASEDASHI, YOKKAICHI, MIE, 510-8560, JAPAN

| Test Item(s) | Method | Unit | MDL | Result |
|---|---|-------|-------|--------|
| | | | | No.1 |
| Antimony (Sb) (CAS No.: 7440-36-0) | With reference to US EPA 3052: 1996, analysis was performed by ICP-OES. | mg/kg | 2 | n.d. |
| Beryllium (Be) (CAS No.: 7440-41-7) | With reference to US EPA 3052: 1996, analysis was performed by ICP-OES. | mg/kg | 2 | n.d. |
| Polychlorinated biphenyls (PCBs) | With reference to US EPA 3550C: 2007, analysis was performed by GC/MS. | mg/kg | 0.5 | n.d. |
| Polychlorinated naphthalene (PCNs) | With reference to US EPA 3550C: 2007, analysis was performed by GC/MS. | mg/kg | 5 | n.d. |
| Polychlorinated terphenyls (PCTs) | With reference to US EPA 3550C: 2007, analysis was performed by GC/MS. | mg/kg | 0.5 | n.d. |
| Short Chain Chlorinated Paraffins(C10-C13) (SCCP) (CAS No.: 85535-84-8) | With reference to ISO 18219: 2015, analysis was performed by GC/MS. | mg/kg | 50 | n.d. |
| Fluorine (F) (CAS No.: 14762-94-8) | With reference to BS EN 14582: 2016, analysis was performed by IC. | mg/kg | 50 | n.d. |
| Chlorine (Cl) (CAS No.: 22537-15-1) | With reference to BS EN 14582: 2016, analysis was performed by IC. | mg/kg | 50 | 86.6 |
| Bromine (Br) (CAS No.: 10097-32-2) | With reference to BS EN 14582: 2016, analysis was performed by IC. | mg/kg | 50 | n.d. |
| Iodine (I) (CAS No.: 14362-44-8) | With reference to BS EN 14582: 2016, analysis was performed by IC. | mg/kg | 50 | n.d. |
| Tributyl tin (TBT) | With reference to ISO 17353: 2004, analysis was performed by GC/FPD. | mg/kg | 0.03 | n.d. |
| Triphenyl tin (TPhT) | With reference to ISO 17353: 2004, analysis was performed by GC/FPD. | mg/kg | 0.03 | n.d. |
| Bis(tributyltin) oxide (TBTO) (CAS No.: 56-35-9) | Calculated from the result of Tributyl Tin (TBT). | mg/kg | 0.03▲ | n.d. |
| Dibutyl tin (DBT) | With reference to ISO 17353: 2004, analysis was performed by GC/FPD. | mg/kg | 0.03 | n.d. |
| Diocetyl tin (DOT) | With reference to ISO 17353: 2004, analysis was performed by GC/FPD. | mg/kg | 0.03 | n.d. |

This document is issued by the Company subject to its General Conditions of Service printed overleaf, available on request or accessible at <https://www.sgs.com.tw/terms-of-service> and, for electronic format documents, subject to Terms and Conditions for Electronic Documents at <https://www.sgs.com.tw/terms-of-service>. Attention is drawn to the limitation of liability, indemnification and jurisdiction issues defined therein. Any holder of this document is advised that information contained hereon reflects the Company's findings at the time of its intervention only and within the limits of client's instruction, if any. The Company's sole responsibility is to its Client and this document does not exonerate parties to a transaction from exercising all their rights and obligations under the transaction documents. This document cannot be reproduced, except in full, without prior written approval of the Company. Any unauthorized alteration, forgery or falsification of the content or appearance of this document is unlawful and offenders may be prosecuted to the fullest extent of the law. Unless otherwise stated the results shown in this test report refer only to the sample(s) tested.

Test Report

No.: EKR21901163

Date: 24-Sep-2021

Page: 4 of 16

PANASONIC CORPORATION

60, KITASHINKAI, HASEDASHI, YOKKAICHI, MIE, 510-8560, JAPAN

| Test Item(s) | Method | Unit | MDL | Result |
|--|---|-------|------|----------|
| | | | | No.1 |
| Perfluorooctane sulfonate (PFOS) and it's salt (CAS No.: 1763-23-1 and its salts) | With reference to CEN/TS 15968: 2010, analysis was performed by LC/MS/MS. | mg/kg | 0.01 | n.d. |
| Perfluorooctanoic acid (PFOA) and it's salt (CAS No.: 335-67-1 and its salts) | With reference to CEN/TS 15968: 2010, analysis was performed by LC/MS/MS. | mg/kg | 0.01 | n.d. |
| Butyl benzyl phthalate (BBP) (CAS No.: 85-68-7) | With reference to IEC 62321-8: 2017, analysis was performed by GC/MS. | mg/kg | 50 | n.d. |
| Dibutyl phthalate (DBP) (CAS No.: 84-74-2) | With reference to IEC 62321-8: 2017, analysis was performed by GC/MS. | mg/kg | 50 | n.d. |
| Diisodecyl phthalate (DIDP) (CAS No.: 26761-40-0, 68515-49-1) | With reference to IEC 62321-8: 2017, analysis was performed by GC/MS. | mg/kg | 50 | n.d. |
| Diisononyl phthalate (DINP) (CAS No.: 28553-12-0, 68515-48-0) | With reference to IEC 62321-8: 2017, analysis was performed by GC/MS. | mg/kg | 50 | n.d. |
| Di-(2-ethylhexyl) phthalate (DEHP) (CAS No.: 117-81-7) | With reference to IEC 62321-8: 2017, analysis was performed by GC/MS. | mg/kg | 50 | n.d. |
| Di-n-octyl phthalate (DNOP) (CAS No.: 117-84-0) | With reference to IEC 62321-8: 2017, analysis was performed by GC/MS. | mg/kg | 50 | n.d. |
| Diisobutyl phthalate (DIBP) (CAS No.: 84-69-5) | With reference to IEC 62321-8: 2017, analysis was performed by GC/MS. | mg/kg | 50 | n.d. |
| Hexabromocyclododecane (HBCDD) and all major diastereoisomers identified (α - HBCDD, β - HBCDD, γ - HBCDD) (CAS No.: 25637-99-4, 3194-55-6 (134237-51-7, 134237-50-6, 134237-52-8)) | With reference to IEC 62321: 2008, analysis was performed by GC/MS. | mg/kg | 5 | n.d. |
| Polyvinyl chloride (PVC) | With reference to ASTM E1252: 2013, analysis was performed by FT-IR and Flame Test. | ** | - | Negative |

This document is issued by the Company subject to its General Conditions of Service printed overleaf, available on request or accessible at <https://www.sgs.com.tw/terms-of-service> and, for electronic format documents, subject to Terms and Conditions for Electronic Documents at <https://www.sgs.com.tw/terms-of-service>. Attention is drawn to the limitation of liability, indemnification and jurisdiction issues defined therein. Any holder of this document is advised that information contained hereon reflects the Company's findings at the time of its intervention only and within the limits of client's instruction, if any. The Company's sole responsibility is to its Client and this document does not exonerate parties to a transaction from exercising all their rights and obligations under the transaction documents. This document cannot be reproduced, except in full, without prior written approval of the Company. Any unauthorized alteration, forgery or falsification of the content or appearance of this document is unlawful and offenders may be prosecuted to the fullest extent of the law. Unless otherwise stated the results shown in this test report refer only to the sample(s) tested.



Test Report

No.: EKR21901163

Date: 24-Sep-2021

Page: 5 of 16

PANASONIC CORPORATION
60, KITASHINKAI, HASEDASHI, YOKKAICHI, MIE, 510-8560, JAPAN

Note :

1. mg/kg = ppm ; 0.1wt% = 1000ppm
2. MDL = Method Detection Limit
3. n.d. = Not Detected (Less than MDL)
4. "-" = Not Regulated
5. **= Qualitative analysis (No Unit)
6. Negative = Undetectable ; Positive = Detectable
7. PFOS and its salts including :
CAS No.: 29081-56-9, 2795-39-3, 29457-72-5, 70225-14-8, 56773-42-3, 251099-16-8, 307-35-7.
8. PFOA and its salts including :
CAS No.: 3825-26-1, 335-95-5, 2395-00-8, 335-93-3, 335-66-0.
9. ▲ : The MDL was evaluated for element / tested substance.

Conversion Formula : $AX = A \times F$

| AX | A | F |
|------------------------------|--------------------|-------|
| Bis(tributyltin)oxide (TBTO) | Tributyl Tin (TBT) | 1.024 |

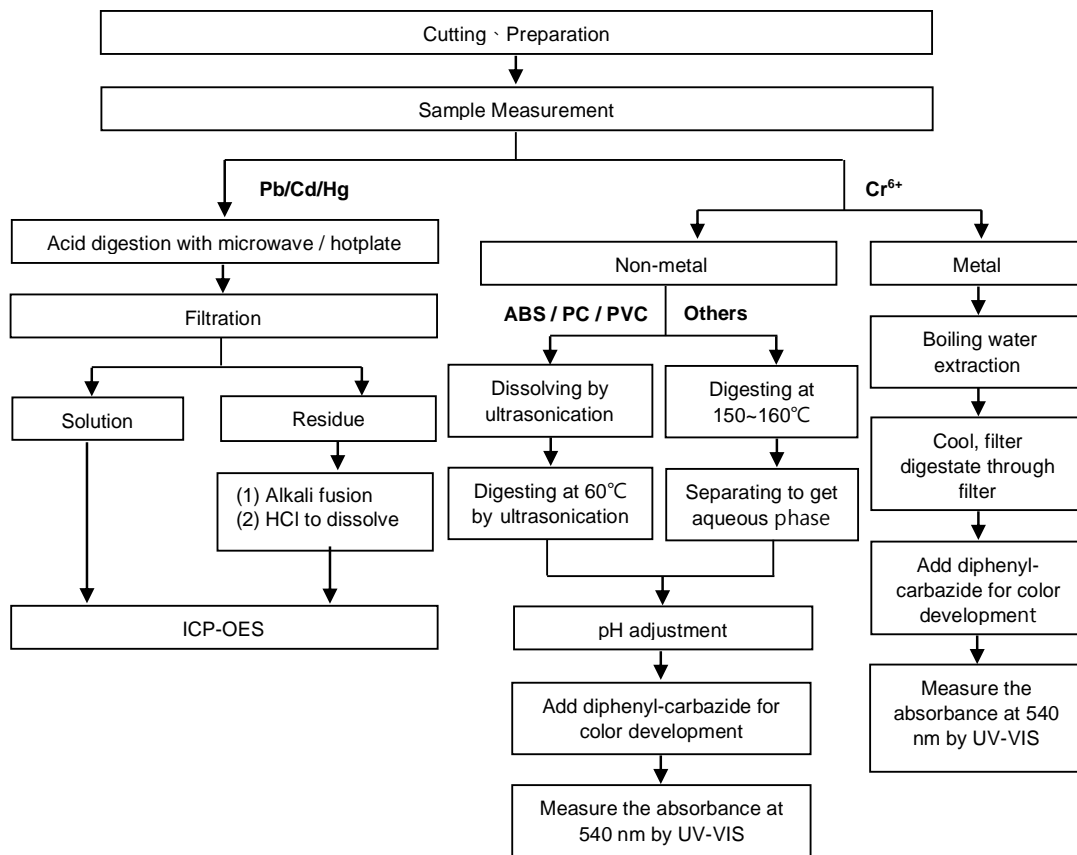
Parameter Conversion Table : https://eecloud.sgs.com/Region_TW/DocDownload.aspx#otherDoc

This document is issued by the Company subject to its General Conditions of Service printed overleaf, available on request or accessible at <https://www.sgs.com.tw/terms-of-service> and, for electronic format documents, subject to Terms and Conditions for Electronic Documents at <https://www.sgs.com.tw/terms-of-service>. Attention is drawn to the limitation of liability, indemnification and jurisdiction issues defined therein. Any holder of this document is advised that information contained hereon reflects the Company's findings at the time of its intervention only and within the limits of client's instruction, if any. The Company's sole responsibility is to its Client and this document does not exonerate parties to a transaction from exercising all their rights and obligations under the transaction documents. This document cannot be reproduced, except in full, without prior written approval of the Company. Any unauthorized alteration, forgery or falsification of the content or appearance of this document is unlawful and offenders may be prosecuted to the fullest extent of the law. Unless otherwise stated the results shown in this test report refer only to the sample(s) tested.

PANASONIC CORPORATION
60, KITASHINKAI, HASEDASHI, YOKKAICHI, MIE, 510-8560, JAPAN

Analytical flow chart of Heavy Metal

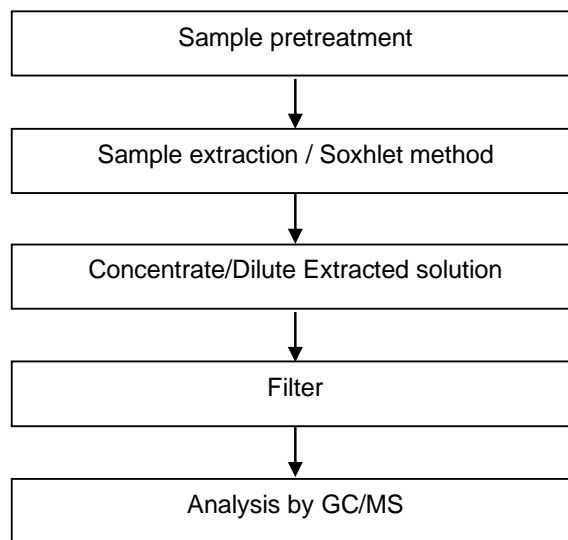
These samples were dissolved totally by pre-conditioning method according to below flow chart. (Cr⁶⁺ test method excluded)



This document is issued by the Company subject to its General Conditions of Service printed overleaf, available on request or accessible at <https://www.sgs.com.tw/terms-of-service> and, for electronic format documents, subject to Terms and Conditions for Electronic Documents at <https://www.sgs.com.tw/terms-of-service>. Attention is drawn to the limitation of liability, indemnification and jurisdiction issues defined therein. Any holder of this document is advised that information contained hereon reflects the Company's findings at the time of its intervention only and within the limits of client's instruction, if any. The Company's sole responsibility is to its Client and this document does not exonerate parties to a transaction from exercising all their rights and obligations under the transaction documents. This document cannot be reproduced, except in full, without prior written approval of the Company. Any unauthorized alteration, forgery or falsification of the content or appearance of this document is unlawful and offenders may be prosecuted to the fullest extent of the law. Unless otherwise stated the results shown in this test report refer only to the sample(s) tested.

PANASONIC CORPORATION
60, KITASHINKAI, HASEDASHI, YOKKAICHI, MIE, 510-8560, JAPAN

PBB/PBDE analytical FLOW CHART



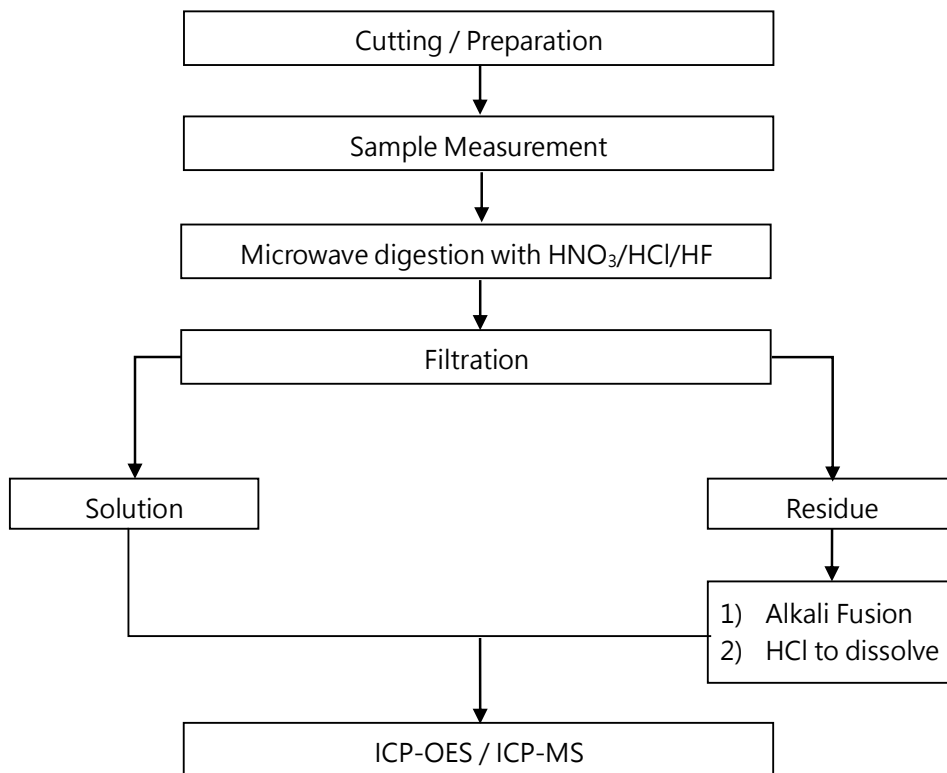
This document is issued by the Company subject to its General Conditions of Service printed overleaf, available on request or accessible at <https://www.sgs.com.tw/terms-of-service> and, for electronic format documents, subject to Terms and Conditions for Electronic Documents at <https://www.sgs.com.tw/terms-of-service>. Attention is drawn to the limitation of liability, indemnification and jurisdiction issues defined therein. Any holder of this document is advised that information contained hereon reflects the Company's findings at the time of its intervention only and within the limits of client's instruction, if any. The Company's sole responsibility is to its Client and this document does not exonerate parties to a transaction from exercising all their rights and obligations under the transaction documents. This document cannot be reproduced, except in full, without prior written approval of the Company. Any unauthorized alteration, forgery or falsification of the content or appearance of this document is unlawful and offenders may be prosecuted to the fullest extent of the law. Unless otherwise stated the results shown in this test report refer only to the sample(s) tested.

PANASONIC CORPORATION
60, KITASHINKAI, HASEDASHI, YOKKAICHI, MIE, 510-8560, JAPAN

Analytical flow chart of Elements (Heavy metal included)

These samples were dissolved totally by pre-conditioning method according to below flow chart.

【Reference method : US EPA 3051 、 US EPA 3052】



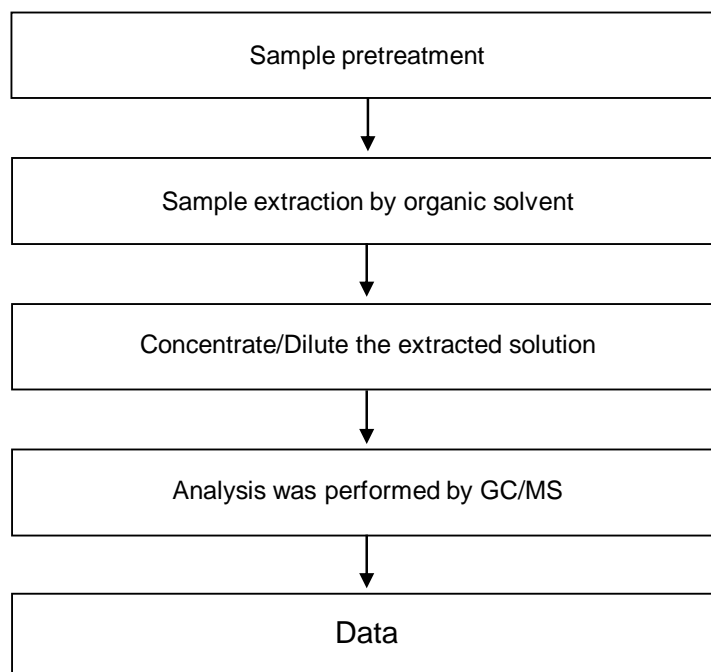
* US EPA 3051 method does not add HF.

This document is issued by the Company subject to its General Conditions of Service printed overleaf, available on request or accessible at <https://www.sgs.com.tw/terms-of-service> and, for electronic format documents, subject to Terms and Conditions for Electronic Documents at <https://www.sgs.com.tw/terms-of-service>. Attention is drawn to the limitation of liability, indemnification and jurisdiction issues defined therein. Any holder of this document is advised that information contained hereon reflects the Company's findings at the time of its intervention only and within the limits of client's instruction, if any. The Company's sole responsibility is to its Client and this document does not exonerate parties to a transaction from exercising all their rights and obligations under the transaction documents. This document cannot be reproduced, except in full, without prior written approval of the Company. Any unauthorized alteration, forgery or falsification of the content or appearance of this document is unlawful and offenders may be prosecuted to the fullest extent of the law. Unless otherwise stated the results shown in this test report refer only to the sample(s) tested.

PANASONIC CORPORATION
60, KITASHINKAI, HASEDASHI, YOKKAICHI, MIE, 510-8560, JAPAN

Analytical flow chart

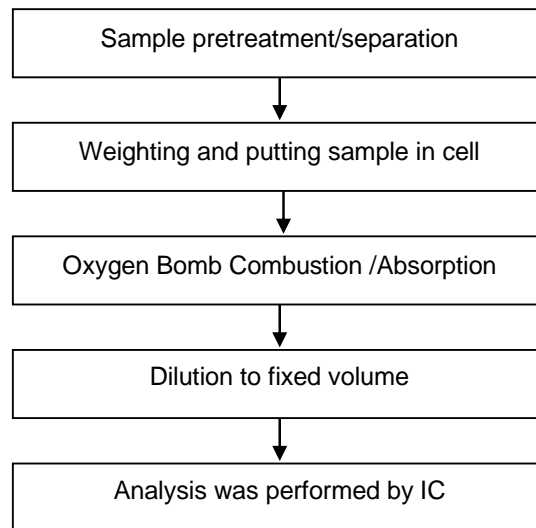
* Apply to: PCBs, PCNs, PCTs, Mirex, Chlorinated Paraffins, DBBT



This document is issued by the Company subject to its General Conditions of Service printed overleaf, available on request or accessible at <https://www.sgs.com.tw/terms-of-service> and, for electronic format documents, subject to Terms and Conditions for Electronic Documents at <https://www.sgs.com.tw/terms-of-service>. Attention is drawn to the limitation of liability, indemnification and jurisdiction issues defined therein. Any holder of this document is advised that information contained hereon reflects the Company's findings at the time of its intervention only and within the limits of client's instruction, if any. The Company's sole responsibility is to its Client and this document does not exonerate parties to a transaction from exercising all their rights and obligations under the transaction documents. This document cannot be reproduced, except in full, without prior written approval of the Company. Any unauthorized alteration, forgery or falsification of the content or appearance of this document is unlawful and offenders may be prosecuted to the fullest extent of the law. Unless otherwise stated the results shown in this test report refer only to the sample(s) tested.

PANASONIC CORPORATION
60, KITASHINKAI, HASEDASHI, YOKKAICHI, MIE, 510-8560, JAPAN

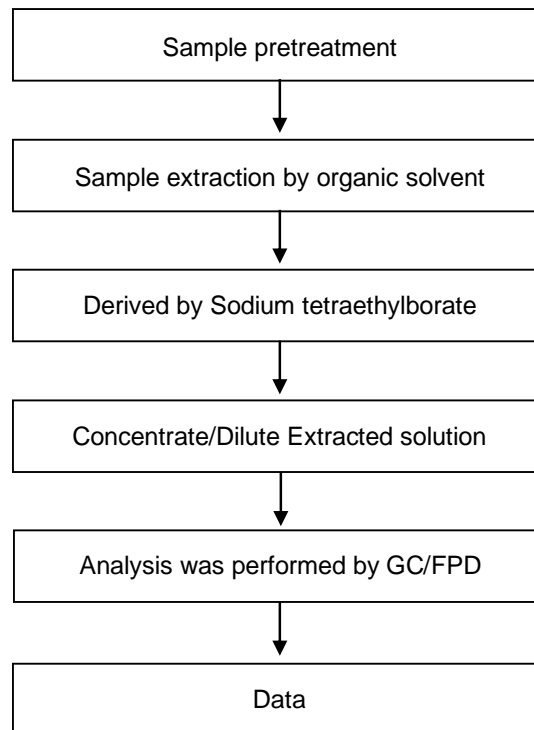
Analytical flow chart of Halogen



This document is issued by the Company subject to its General Conditions of Service printed overleaf, available on request or accessible at <https://www.sgs.com.tw/terms-of-service> and, for electronic format documents, subject to Terms and Conditions for Electronic Documents at <https://www.sgs.com.tw/terms-of-service>. Attention is drawn to the limitation of liability, indemnification and jurisdiction issues defined therein. Any holder of this document is advised that information contained hereon reflects the Company's findings at the time of its intervention only and within the limits of client's instruction, if any. The Company's sole responsibility is to its Client and this document does not exonerate parties to a transaction from exercising all their rights and obligations under the transaction documents. This document cannot be reproduced, except in full, without prior written approval of the Company. Any unauthorized alteration, forgery or falsification of the content or appearance of this document is unlawful and offenders may be prosecuted to the fullest extent of the law. Unless otherwise stated the results shown in this test report refer only to the sample(s) tested.

PANASONIC CORPORATION
60, KITASHINKAI, HASEDASHI, YOKKAICHI, MIE, 510-8560, JAPAN

Analytical flow chart - Organic-Tin

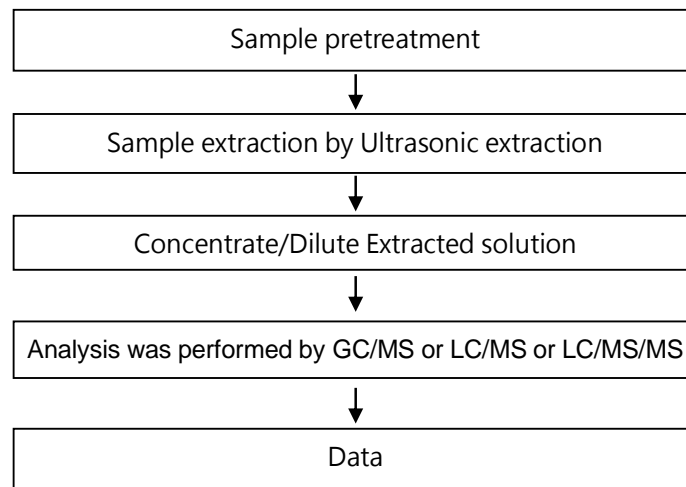


This document is issued by the Company subject to its General Conditions of Service printed overleaf, available on request or accessible at <https://www.sgs.com.tw/terms-of-service> and, for electronic format documents, subject to Terms and Conditions for Electronic Documents at <https://www.sgs.com.tw/terms-of-service>. Attention is drawn to the limitation of liability, indemnification and jurisdiction issues defined therein. Any holder of this document is advised that information contained hereon reflects the Company's findings at the time of its intervention only and within the limits of client's instruction, if any. The Company's sole responsibility is to its Client and this document does not exonerate parties to a transaction from exercising all their rights and obligations under the transaction documents. This document cannot be reproduced, except in full, without prior written approval of the Company. Any unauthorized alteration, forgery or falsification of the content or appearance of this document is unlawful and offenders may be prosecuted to the fullest extent of the law. Unless otherwise stated the results shown in this test report refer only to the sample(s) tested.

PANASONIC CORPORATION

60, KITASHINKAI, HASEDASHI, YOKKAICHI, MIE, 510-8560, JAPAN

Analytical flow chart – PFAS (including PFOA/PFOS/its related compound, etc.)

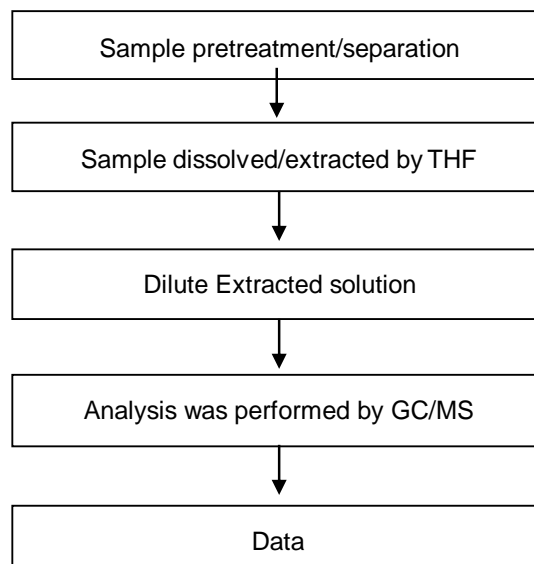


This document is issued by the Company subject to its General Conditions of Service printed overleaf, available on request or accessible at <https://www.sgs.com.tw/terms-of-service> and, for electronic format documents, subject to Terms and Conditions for Electronic Documents at <https://www.sgs.com.tw/terms-of-service>. Attention is drawn to the limitation of liability, indemnification and jurisdiction issues defined therein. Any holder of this document is advised that information contained hereon reflects the Company's findings at the time of its intervention only and within the limits of client's instruction, if any. The Company's sole responsibility is to its Client and this document does not exonerate parties to a transaction from exercising all their rights and obligations under the transaction documents. This document cannot be reproduced, except in full, without prior written approval of the Company. Any unauthorized alteration, forgery or falsification of the content or appearance of this document is unlawful and offenders may be prosecuted to the fullest extent of the law. Unless otherwise stated the results shown in this test report refer only to the sample(s) tested.

PANASONIC CORPORATION
60, KITASHINKAI, HASEDASHI, YOKKAICHI, MIE, 510-8560, JAPAN

Analytical flow chart of phthalate content

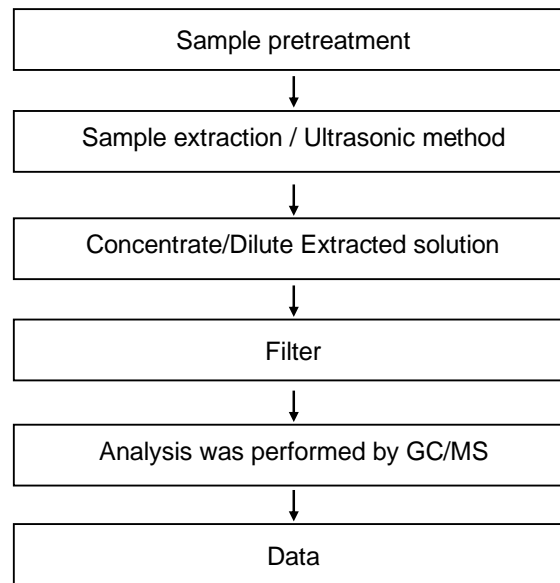
【Test method: IEC 62321-8】



This document is issued by the Company subject to its General Conditions of Service printed overleaf, available on request or accessible at <https://www.sgs.com.tw/terms-of-service> and, for electronic format documents, subject to Terms and Conditions for Electronic Documents at <https://www.sgs.com.tw/terms-of-service>. Attention is drawn to the limitation of liability, indemnification and jurisdiction issues defined therein. Any holder of this document is advised that information contained hereon reflects the Company's findings at the time of its intervention only and within the limits of client's instruction, if any. The Company's sole responsibility is to its Client and this document does not exonerate parties to a transaction from exercising all their rights and obligations under the transaction documents. This document cannot be reproduced, except in full, without prior written approval of the Company. Any unauthorized alteration, forgery or falsification of the content or appearance of this document is unlawful and offenders may be prosecuted to the fullest extent of the law. Unless otherwise stated the results shown in this test report refer only to the sample(s) tested.

PANASONIC CORPORATION
60, KITASHINKAI, HASEDASHI, YOKKAICHI, MIE, 510-8560, JAPAN

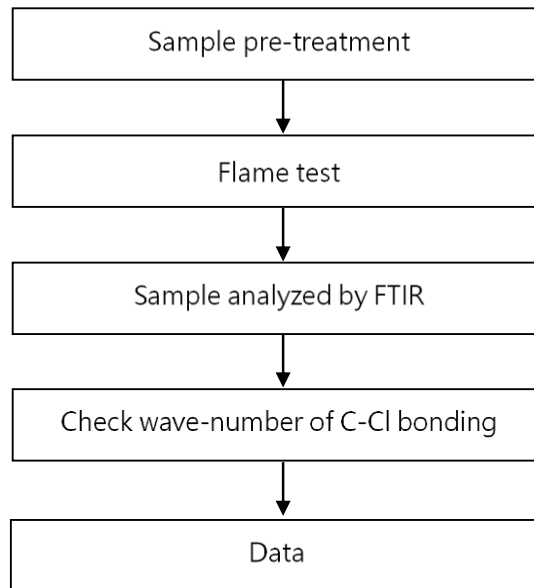
Analytical flow chart - HBCDD



This document is issued by the Company subject to its General Conditions of Service printed overleaf, available on request or accessible at <https://www.sgs.com.tw/terms-of-service> and, for electronic format documents, subject to Terms and Conditions for Electronic Documents at <https://www.sgs.com.tw/terms-of-service>. Attention is drawn to the limitation of liability, indemnification and jurisdiction issues defined therein. Any holder of this document is advised that information contained hereon reflects the Company's findings at the time of its intervention only and within the limits of client's instruction, if any. The Company's sole responsibility is to its Client and this document does not exonerate parties to a transaction from exercising all their rights and obligations under the transaction documents. This document cannot be reproduced, except in full, without prior written approval of the Company. Any unauthorized alteration, forgery or falsification of the content or appearance of this document is unlawful and offenders may be prosecuted to the fullest extent of the law. Unless otherwise stated the results shown in this test report refer only to the sample(s) tested.

PANASONIC CORPORATION
60, KITASHINKAI, HASEDASHI, YOKKAICHI, MIE, 510-8560, JAPAN

Analysis flow chart - PVC



This document is issued by the Company subject to its General Conditions of Service printed overleaf, available on request or accessible at <https://www.sgs.com.tw/terms-of-service> and, for electronic format documents, subject to Terms and Conditions for Electronic Documents at <https://www.sgs.com.tw/terms-of-service>. Attention is drawn to the limitation of liability, indemnification and jurisdiction issues defined therein. Any holder of this document is advised that information contained hereon reflects the Company's findings at the time of its intervention only and within the limits of client's instruction, if any. The Company's sole responsibility is to its Client and this document does not exonerate parties to a transaction from exercising all their rights and obligations under the transaction documents. This document cannot be reproduced, except in full, without prior written approval of the Company. Any unauthorized alteration, forgery or falsification of the content or appearance of this document is unlawful and offenders may be prosecuted to the fullest extent of the law. Unless otherwise stated the results shown in this test report refer only to the sample(s) tested.

Test Report

No.: EKR21901163

Date: 24-Sep-2021

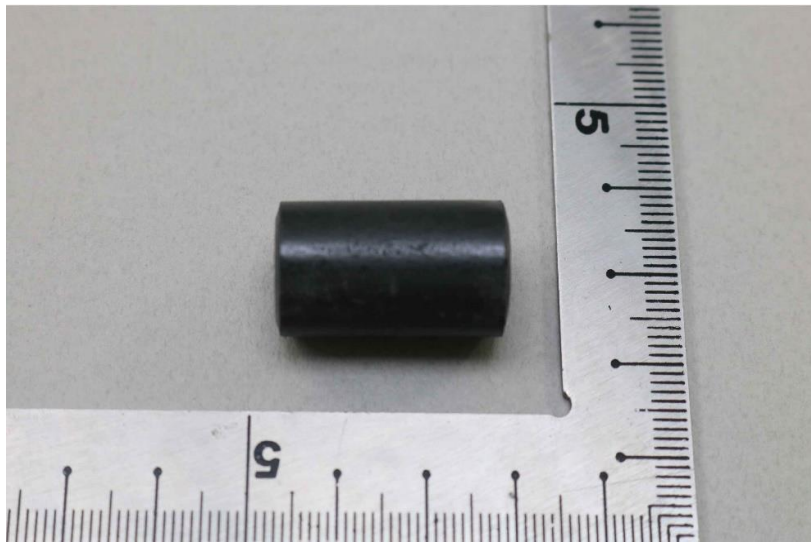
Page: 16 of 16

PANASONIC CORPORATION

60, KITASHINKAI, HASEDASHI, YOKKAICHI, MIE, 510-8560, JAPAN

* The tested sample / part is marked by an arrow if it's shown on the photo. *

EKR21901163



** End of Report **

This document is issued by the Company subject to its General Conditions of Service printed overleaf, available on request or accessible at <https://www.sgs.com.tw/terms-of-service> and, for electronic format documents, subject to Terms and Conditions for Electronic Documents at <https://www.sgs.com.tw/terms-of-service>. Attention is drawn to the limitation of liability, indemnification and jurisdiction issues defined therein. Any holder of this document is advised that information contained hereon reflects the Company's findings at the time of its intervention only and within the limits of client's instruction, if any. The Company's sole responsibility is to its Client and this document does not exonerate parties to a transaction from exercising all their rights and obligations under the transaction documents. This document cannot be reproduced, except in full, without prior written approval of the Company. Any unauthorized alteration, forgery or falsification of the content or appearance of this document is unlawful and offenders may be prosecuted to the fullest extent of the law. Unless otherwise stated the results shown in this test report refer only to the sample(s) tested.